

FARMS

RHODE ISLAND

ACCORDING TO THE 2022 CENSUS OF AGRICULTURE

MARKET VALUE OF PRODUCTS SOLD

Nursery
27580 

Vegetables
7915 

Fruits & tree nuts
3046 

Hay/other crops
1338 

Christmas trees
773 

Grains & oilseeds
258 

Milk from cows
4563 

Aquaculture
4261 

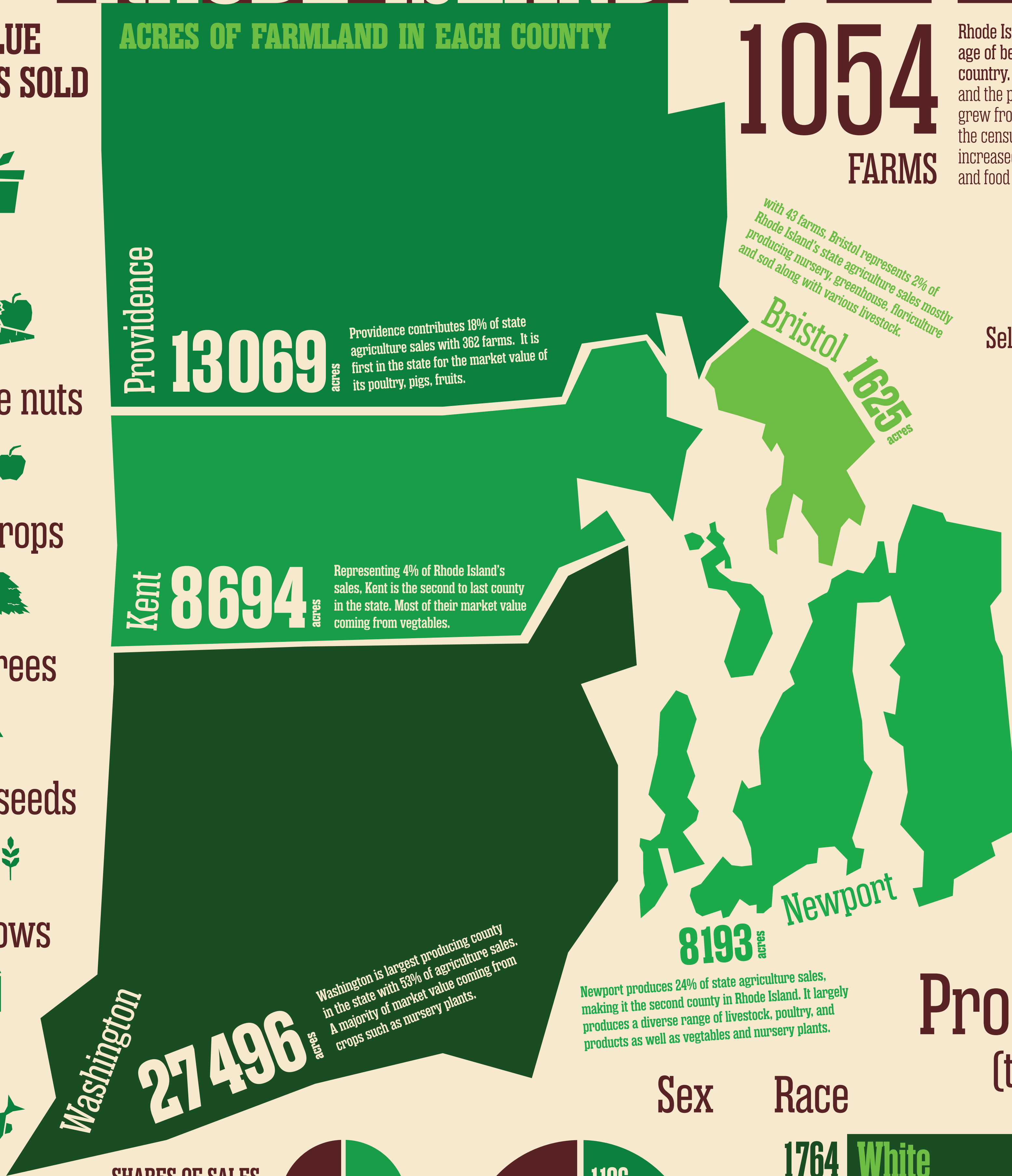
Poultry & Eggs
1420 

Cattle & Calves
1074 

Horses
577 

SALES (1000S)
INFORMATION CONCERNING MARKET VALUE OF HOGS, PIGS, SHEEP, GOATS, AND "OTHER ANIMALS" IS WITHHELD TO AVOID DISCLOSING DATA FOR INDIVIDUAL OPERATIONS

ACRES OF FARMLAND IN EACH COUNTY



1054
FARMS

Rhode Island has the highest percentage of beginning farmers in the country. Both the number of farms and the percentage of farmland in RI grew from 2017 to 2022 according to the census data, demonstrating the increased support for local agriculture and food throughout the state.

24%
Sell direct to consumer

33%
Hire farm labor

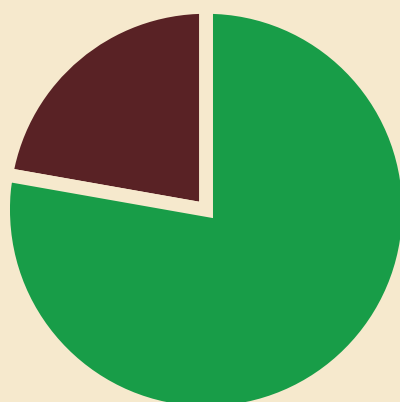
95%
Are family farms

84%
Have internet

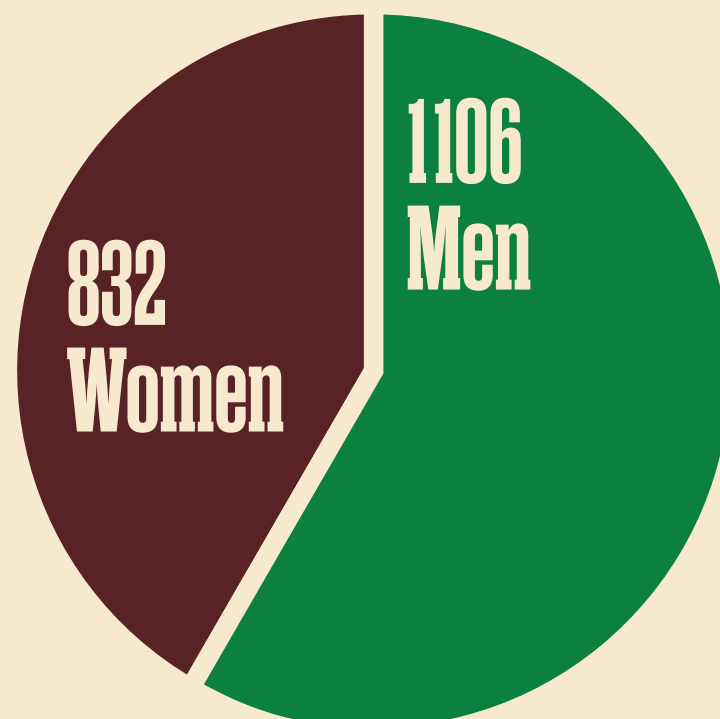
2%
Farm organically

Producers
(total of 1794)

SHARES OF SALES
78% Crops
22% Livestock, poultry, & products



The department of environmental management continues to work across many fronts to benefit and strengthen Rhode Island's green economy and to assist local farmers and fishers in growing their businesses. There are more than 1,000 farms sprinkled across the state and RI is home to a thriving young farmer network. DEM continues to make investments in critical infrastructure as well as provide farm incubation space to new farmers through its Urban Edge Farm and Snake Den Farm properties. The state's food scene is often cited as an area of economic strength ripe for innovation and growth. Already, the local food industry supports 60,000 jobs, and the state's green industries account for more than 15,000 jobs and contribute \$2.5 billion to the economy annually. Supporting local agriculture benefits all Rhode Islanders ensures our future food security, enhances our environment, and celebrates the state's unique food cultures and landscape.

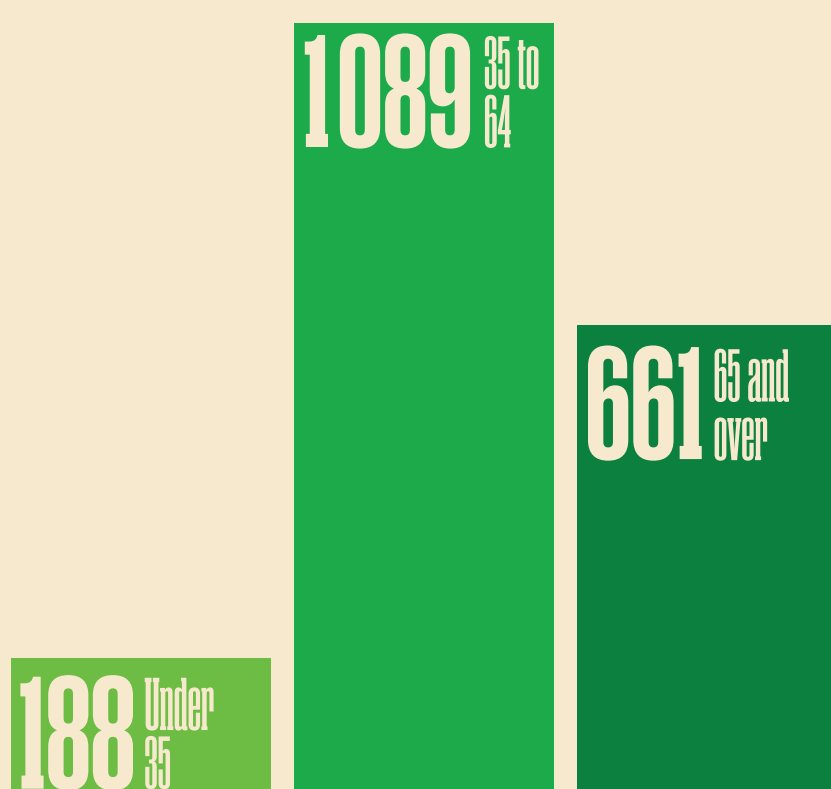


Sex

Race

1764 White
13 Black or African American
9 Asian
8 More than one race

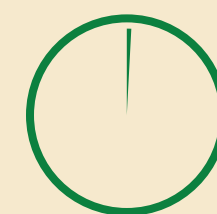
Age



558
New and beginning farmers



209
With military service



15
Hispanic, Latino, Spanish origin