

PART TWO

World

Outside the Window

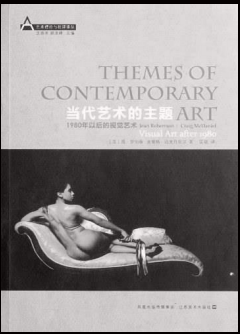
Installation

As I look out of the window I enter a dream world where my "paradise" exists, where there are no viruses, no evil and even no humans. Where nature is everything, where blue and green are the dominant colours.



REFERENCE

① Themes in Contemporary Art



Chapter 5: Place

- Time and space converge as one in the place.
- A place is an event and a collection of tangible materials.
- A place can be a place of possibility, hypotheticality and fantasy - a place where something could happen.



In a utopian vision, I want my place to be fixed, to exist in a different place at the same moment as the present, it does not belong to any place, to anyone.

② The Peach Blossom



— Tao Yuanming (late Jin, early Song)

The author's ideal of a good life and his dissatisfaction with the reality of life are expressed through his depiction of the peaceful and happy, free and egalitarian life of the Peach Blossom Garden.

The Peach Blossom Garden has a white description (a style of writing) artistic style. Although it is a fictional fairyland, it gives a sense of reality due to the use of realistic techniques and the writing of realistic scenes.

DESIGN IDEAS

① Background [Why ?]

- Enviroment :

China's epidemic management closure and control policy is fully liberalised and socio-economically depressed.

- My state :

- After a long lockdown due to the epidemic, I went out for a walk after getting a little better only to encounter cloudy weather.
- While hiding from the rain in the car, I saw through the window: time passing, raindrops, a few hurried passers-by; the wet ground; arguing lovers. A reflection on human vulnerability and a vision of a perfect world sprang up.

- Date :

15/01/2023

- Weather :

Cloudy

- Fragments of Record :

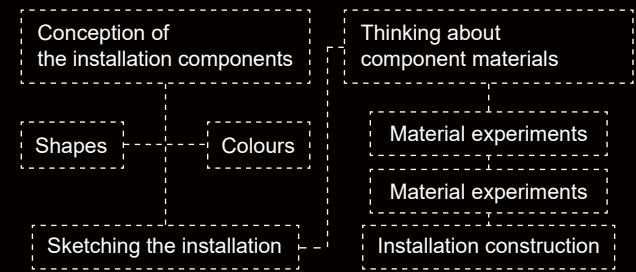


② Output Concept [What ?]

The material is used to represent the perfect world that I imagine exists only outside the window. It is a place - a mirror image of real life , in which there is nature and health (no viruses), no evil and even no human beings.

It is an independent existence, it appears and dies independent of time, it observes the Non-linear time. I wanted to set foot in this place, but only wanted and could only enter it once. For it is my paradise, the perfection of my dreams.

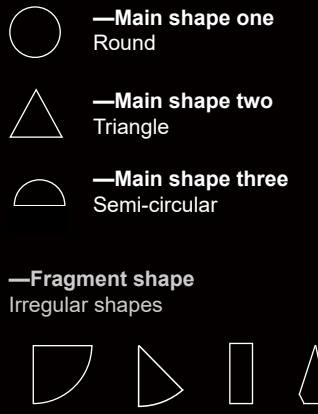
③ Output Plan [How ?]



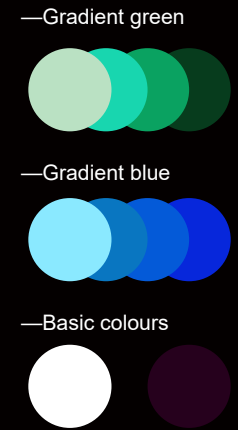
DESIGN DETAILS

The overall expression of the installation is soft but stylised. Lines will be the main form of expression, creating a sense of intertwining and growing upwards, while echoing a sense of integrity and broken form. The overall palette is unified and harmonious, giving a comfortable visual experience.

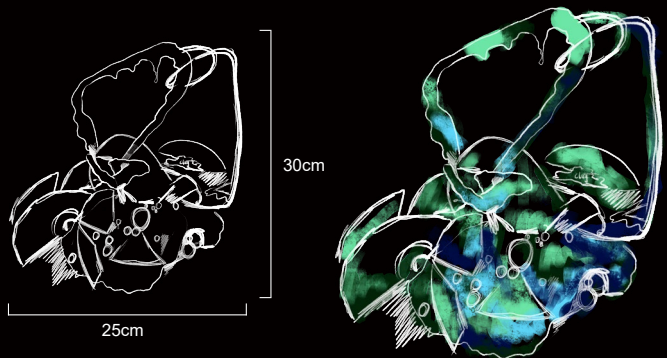
• Shapes



• Colours



• Overall concept of the installation



The subject matter of the premises :

- The regular cycle of all things;
- The roots of natural growth

Mirror Fragments :

- Mirror of the real world;
- Entrance to 'The Peach Blossom';
- The real world is fragile and fragmented

Fluid pigments :

- The predominantly green and blue colour palette emphasises the purity of the place and its naturalness.;
- The pigments interweave and blend with each other with visual impact and harmony.

Ancillary to the main object :

- Transferring nutrients
- Linear trim

Decorations :

- Inspired by the raindrops outside the window;
- The circles represent protection and infinity;
- Ciircles restrict what is inside while keeping what is outside out.

MATERIALS

— Iron Wires

— Clay

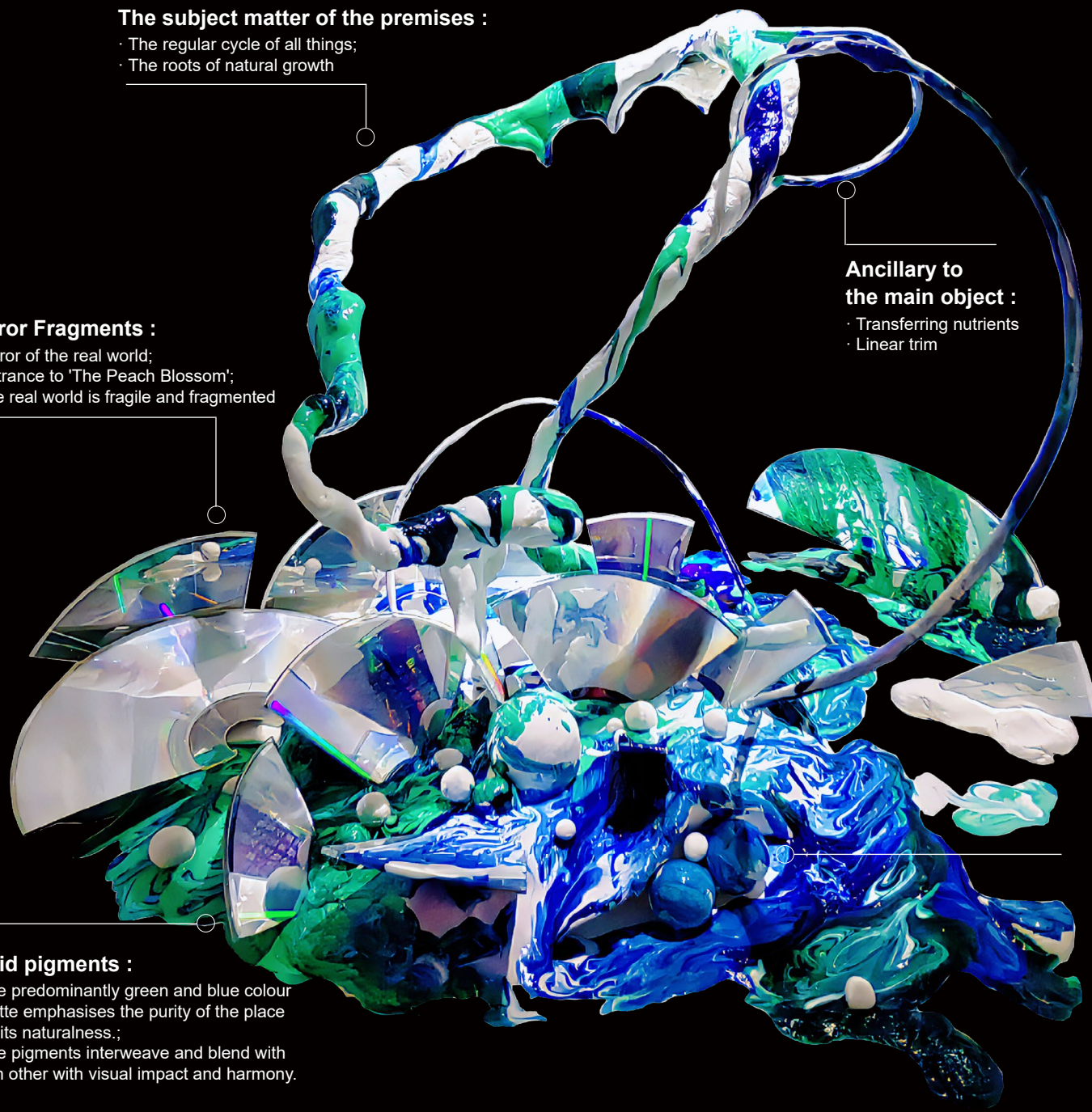
— Fluid acrylic

— CD-ROM fragments

— Brushes

— Scraper

— Tweezer



DETAILS

