

ANDREAS VOLD

ARCHITECT PORTFOLIO

CAND. ARCH

2021-2023  
The Royal Danish Academy,  
Cultural Heritage, Transformation & Restoration  
2020-2024  
Professional Work

## Contact

Andreas Vold, Architect, MNAL, MAA  
Nørrebrogade 227, 3.th  
2200 Copenhagen N

phone: +45 22883055

e-mail: [a@andreasvold.no](mailto:a@andreasvold.no)

website: [www.andreasvold.no](http://www.andreasvold.no)



## Contents

### Comissioned & Professional Work

01 - B19A - Transformation & Addition	p.	18
02 - DW38 - Transformation & Addition	p.	12
M - B19A - Furniture	p.	20

### Academic & Speculative Work

01 - DG - Transformation & Restoration	p.	22
02 - ØG146 - Transformation & Addition	p.	14
03 - BV9 - Transformation	p.	24
04 - RC - Transformation & Revitalization	p.	4



## Profile

I specialize in transforming and preserving cultural heritage, working with structures ranging from post-World War II modernist buildings to traditional timber constructions and the vernacular architecture of the Faroe Islands.

My expertise includes creating detailed research models, conducting thorough site surveys, and authoring comprehensive analytical documents and transformation guides that explore each site's cultural, architectural, and historical significance.

Throughout my academic journey, I've cultivated an artistic approach to architecture, delving into its intricate dimensions while consistently seeking thoughtful responses to its nuanced challenges. I believe we can make a significant impact through small and sustainable interventions.

## References

Lars Rolfsted Mortensen,  
Head of Institute, Adjunkt and Architect MAA Ph.d,  
KADK  
e-mail: [lars.rolfsted.mortensen@kglakademi.dk](mailto:lars.rolfsted.mortensen@kglakademi.dk)  
telephone: +4561711004

Søren Vadstrup,  
Associate Professor and Architect MAA, KADK  
e-mail: [soren.vadstrup@kglakademi.dk](mailto:soren.vadstrup@kglakademi.dk)  
telephone: +4529454096

Guro Vestvik,  
Byutvikler Hamar Kommune  
e-mail: [guro.vestvik@hamar.kommune.no](mailto:guro.vestvik@hamar.kommune.no)  
telephone: +4729454096

## Technical Skills & Software

Adobe-Suite	● ● ● ● ● ●
Sketchup	● ● ● ● ● ●
Enscape	● ● ● ● ● ●
Autocad	● ● ● ● ● ●
Archicad	● ● ● ● ● ●
V-ray for Rhino	● ● ● ● ● ●
3D-Printing Software	● ● ● ● ● ●
3D-Scanning	● ● ● ● ● ●
Total Station Surveying	● ● ● ● ● ●
Technical Drawing 1:5	● ● ● ● ● ●
Model-Building	● ● ● ● ● ●

## Workshops & Seminars

Nordic Restoration Seminar 2022  
Dinesens Summer School - Orbi, 2020 & 2022  
*Worked with a group of 15 architecture students on building a fishing hut in Jels, Sønderjylland using old Faroese techniques for wood-joinery.*  
Network for Nordic Timber Cities "Den nordiske trebyen", 2022  
*Volunteered at the seminar, holding workshops for architects and related disciplines in the field perservation and cultural heritage*  
Network for Nordic Timber Cities "Den nordiske trebyen", 2023  
*Attended the annual pan-nordic seminar in Finland, on scholarship from Nordisk Ministerråd.*

# Suburban City Center - Rågsved Transformation & Restoration

Speculative Project - Master Thesis

Autocad & Rhinoceros 7

3D-scanner, Vray & Adobe-suite

Rågsveds Centrum embodies the ideals and urban development principles of the Swedish post-war welfare society, showcasing an everyday architecture that is both typical of its era and uniquely site-specific. It stands as a cherished landmark among locals, intricately tied to the history and identity of the suburb.

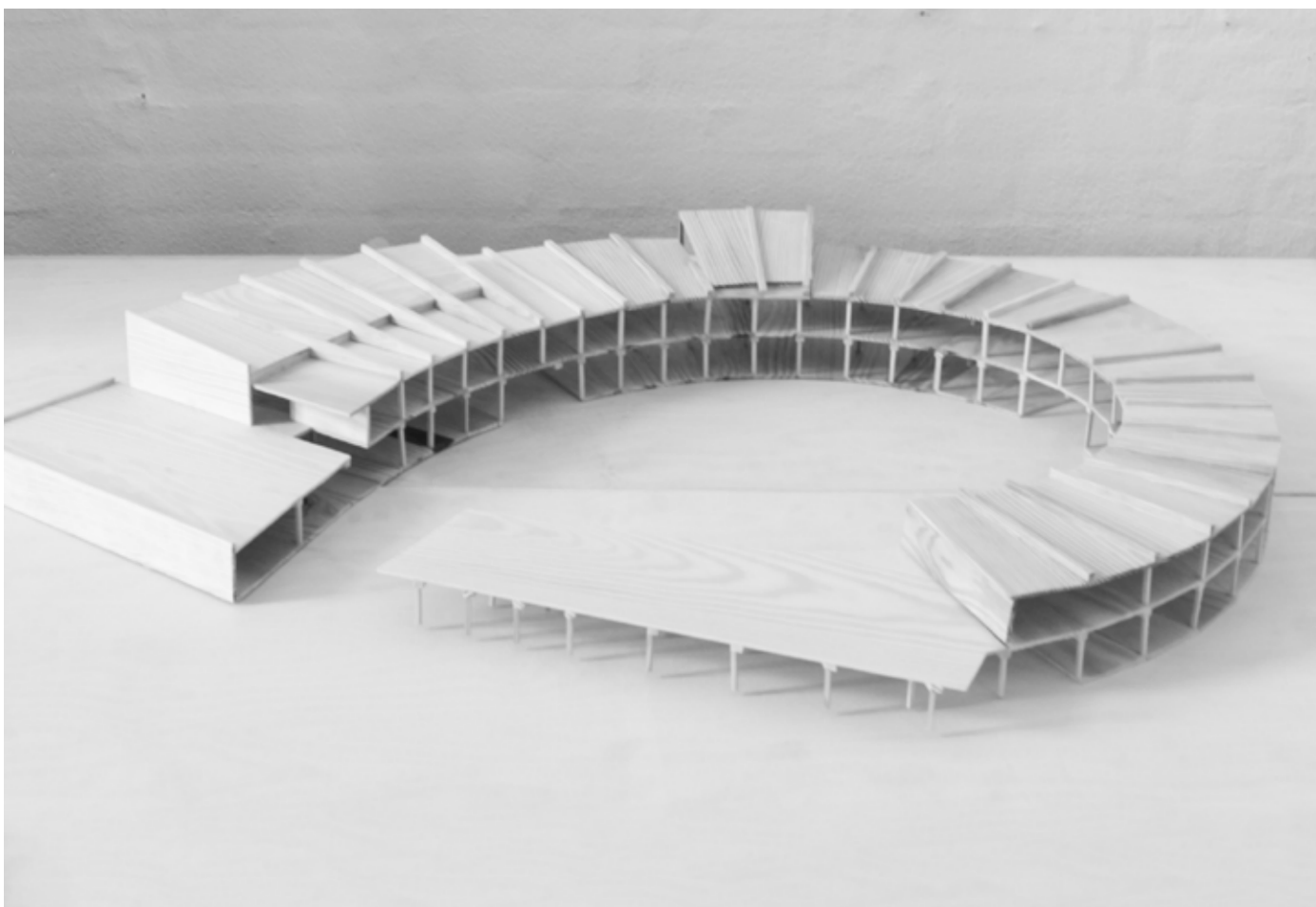
However, like many of its historic counterparts, the design incorporates traffic separation concepts that have resulted in counterintuitive connections through the center.

Additionally, the sharp programmatic division between retail on the ground floor and social meeting

places on the first floor leads to an empty square outside of retail opening hours. The inward-facing nature of the building, coupled with the separation of different sides of the center, has turned its back on a neglected and deserted alley.

To address these issues, an in-depth analysis and valuation of the building and its surrounding urban space were conducted. This study identified the inherent qualities and challenges of the site. By integrating model studies, archival research, interviews, and phenomenological registrations, we informed the scope of an architectural and programmatic transformation aimed at revitalizing the center.





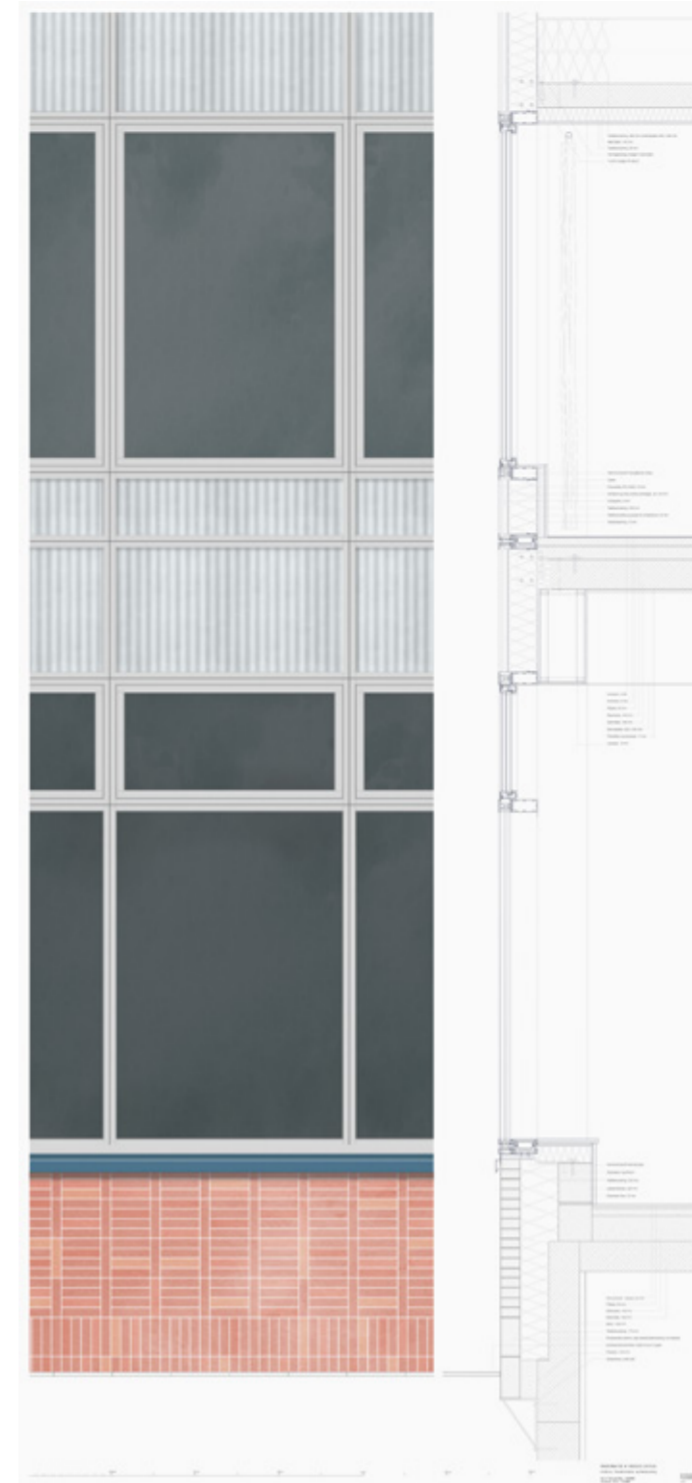
1:100 construction model, hand



1:200 plan showing the urban



1:500 model with arrival dia-

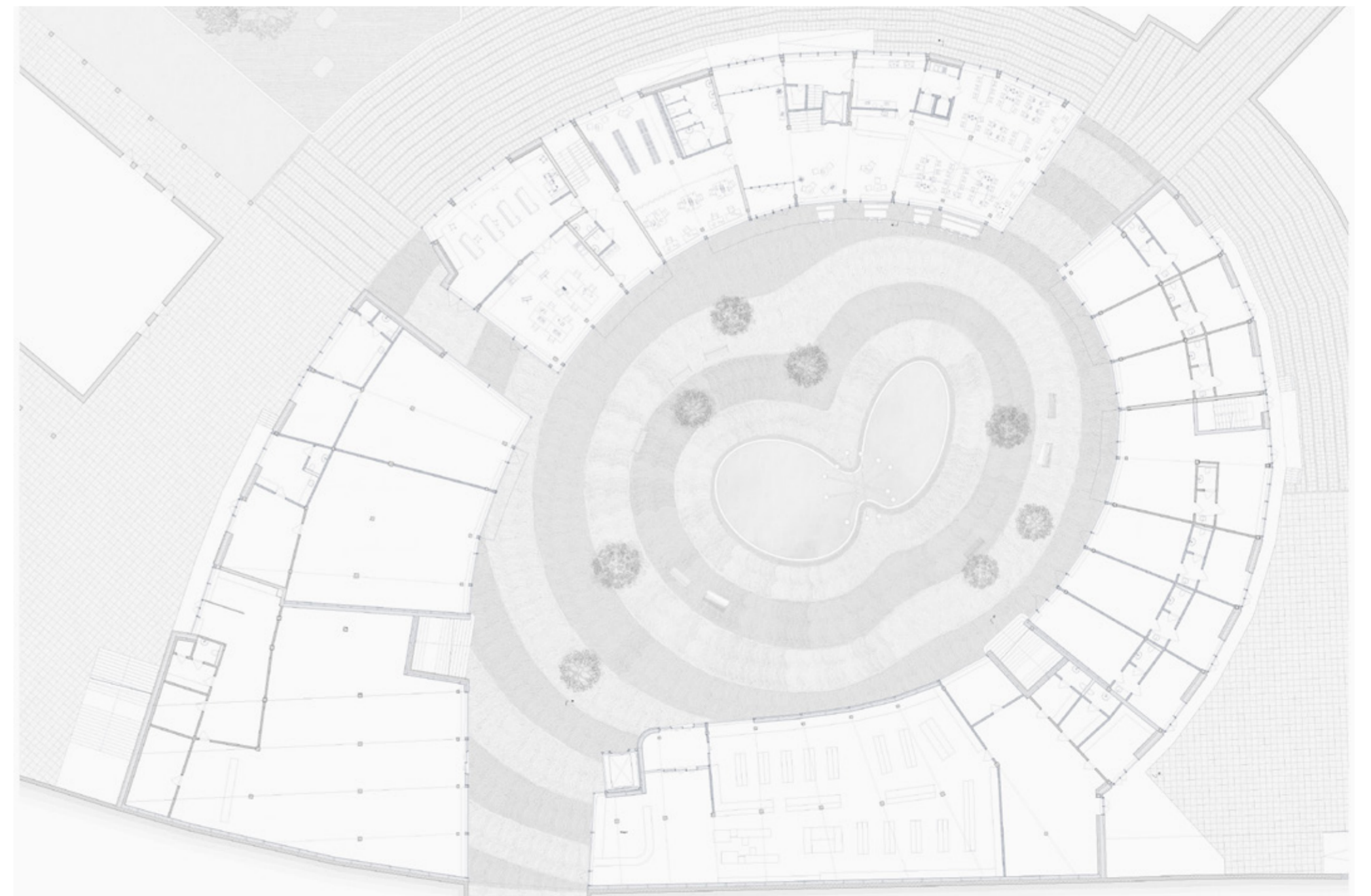


1:20 model, section through the building

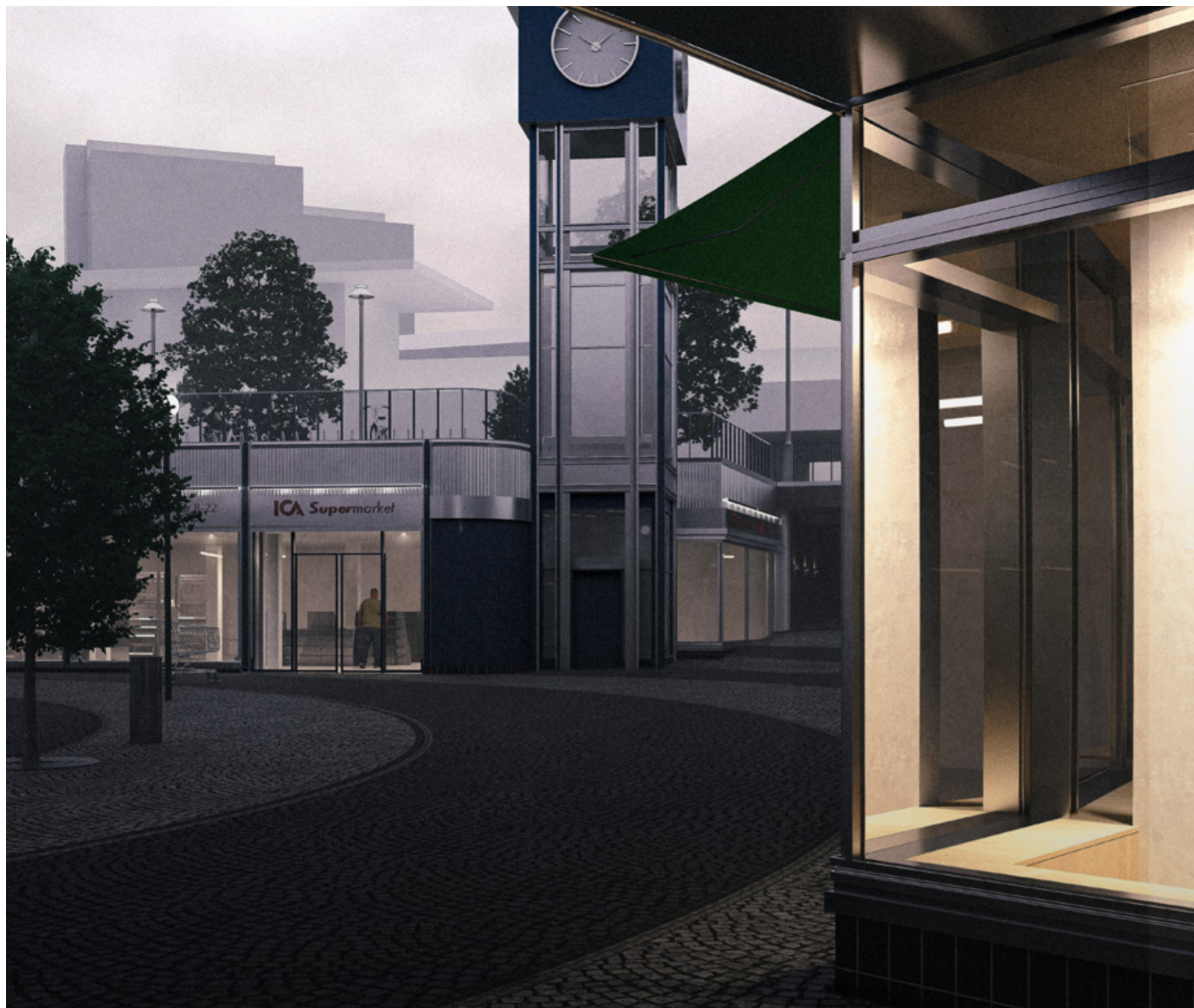
1:5 detail, to the left, the facade towards Rågsvedslingen, the historical "backside".



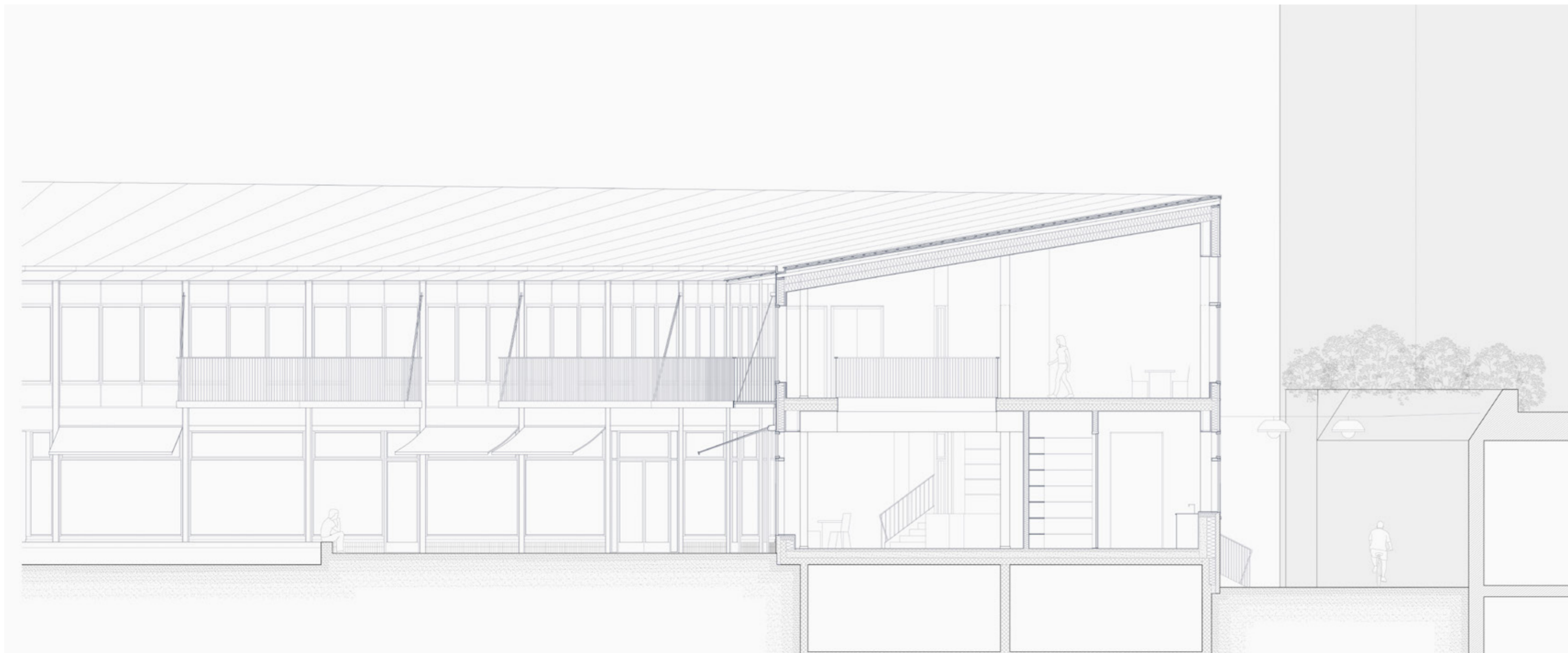
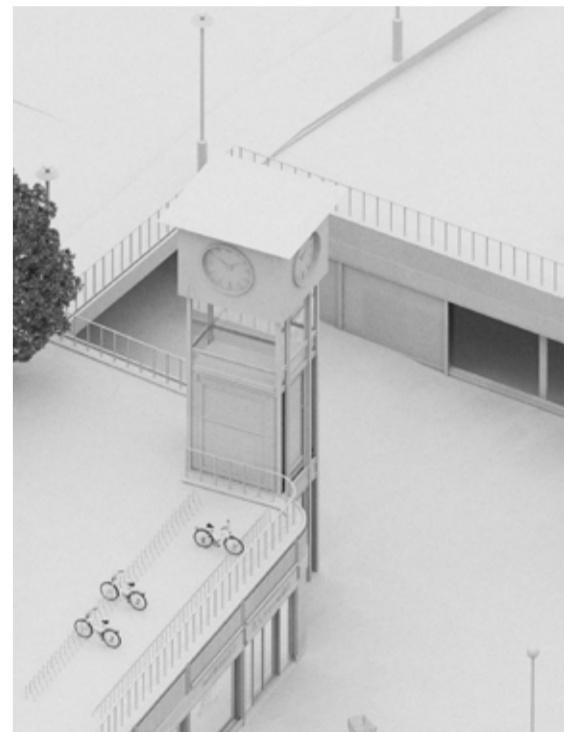
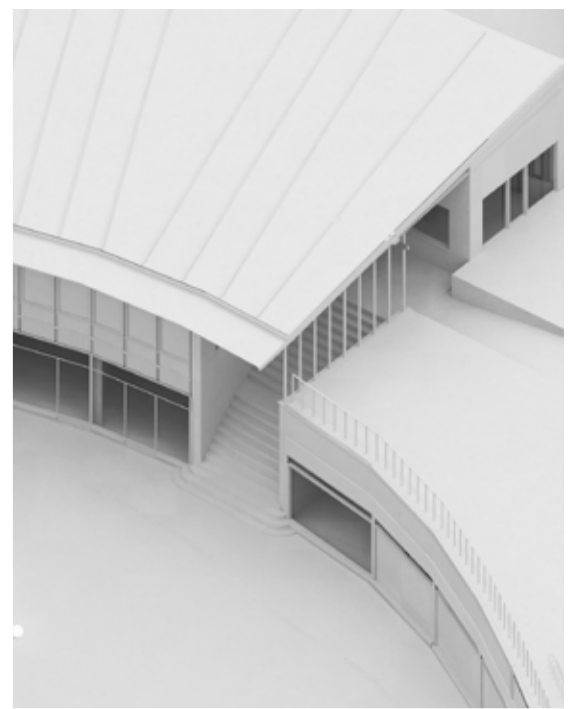
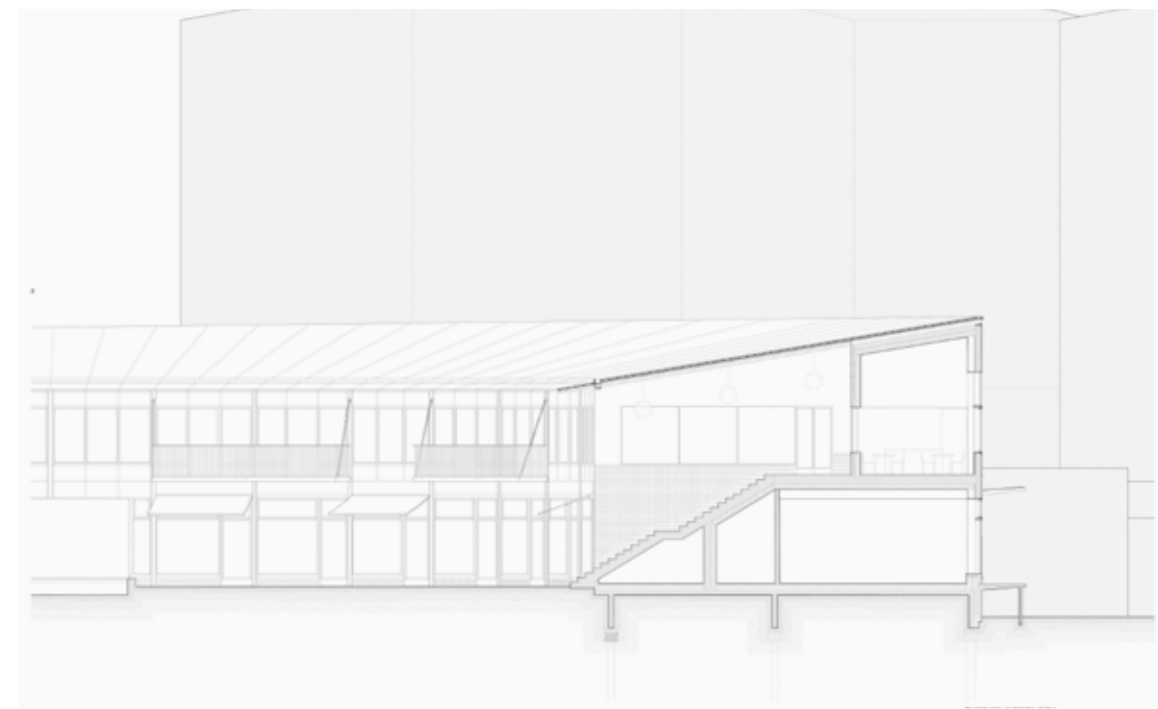
Visualisation showing the north-



1:50 Plan over Rågsveds Centrum and surroundings



Visualisation showing the metro passage together



1:50 Axonometric visualisations with 1:50 sections, illustrating the three points of inter-

## Dr. Waalers Gate 38 Transformation and addition

Private commission - 50's postwar house  
w/ Sissel Højmark Esbensen

Archicad, Rhinoceros 7 + Grasshopper  
Enscape, Vray & Adobe-suite

The house, constructed in the 1950s, was originally part of a larger housing scheme designed to accommodate railway workers in a Norwegian city experiencing significant population growth due to the establishment of a railway system north of the capital. The area, now listed to preserve its original qualities, still permits thoughtfully designed additions.

The client family, now in their third generation of residence, needed more space to adapt to modern living standards. The original horizontally divided house, featuring two-bedroom apartments on each floor, was no longer sufficient for their growing family.

Consequently, we were commissioned to design an extension that would meet their evolving needs.

Our approach utilized a CLT (cross-laminated timber) structure and biogenic materials to create a warm and inviting interior. Additionally, we reorganized parts of the existing house to minimize the need for a large extension, thus significantly reducing costs and the environmental impact while still accommodating the client's requirements.

The project is ongoing, with the application currently under review by the Municipality.



Transformation TR3  
Dampgeblø - RDS

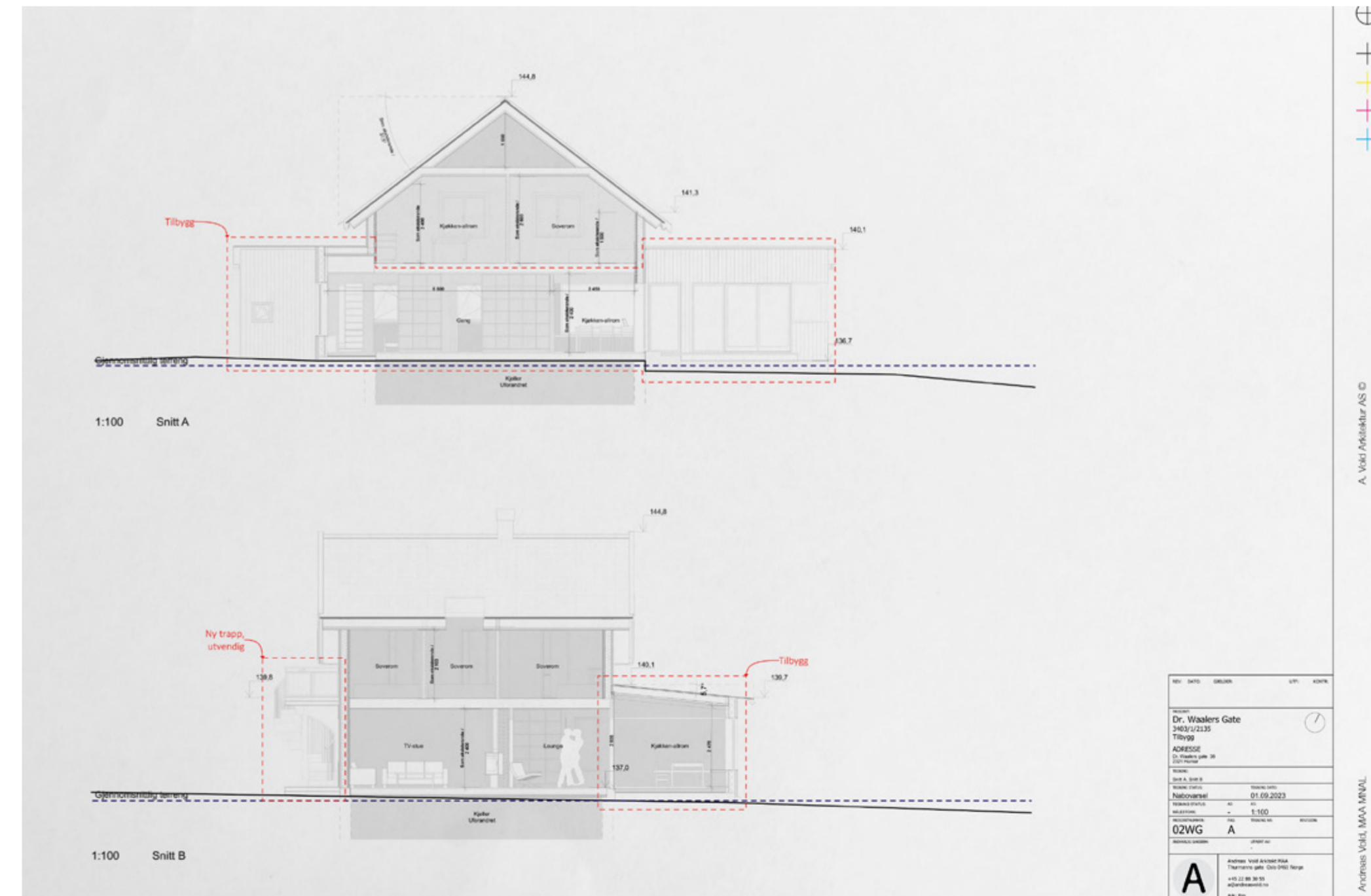
KTR - E21  
Andreas Vold

Transformation TR3  
Dampgeblø - RDS

KTR - E21  
Andreas Vold



Visualisation of the project, interior



A. Vold/Arkitektur AS ©

# Østerbrogade 146 Addition

Speculative Project

Rhinoceros 7  
Autocad & Adobe-suite

Through architectural elements, places are reimagined as new objects, seamlessly integrating into fresh contexts. These architectonic forms intuitively reveal the underlying components that define a place. The objective is to recompose these elements into a cohesive whole, transcending their original settings while acknowledging their lineage. Negative space, light, shadow, and juxtapositions are examined through the medium of photography, highlighting their intrinsic qualities.

The project's dual mission combines pragmatic preservation and transformation of historical structures, emphasizing their contemporary relevance. Illustrated by restoring the 1864 two-story corner building on Østerbrogade, this approach creates functional, lively spaces beyond mere reverence for the past.

Balancing preservation and practicality, the project recognizes that a building's essence transcends

its historical form. It blends heritage with modern needs, forging spaces that honor the past while embracing the present. The project also explores architecture's social and political dimensions, challenging exclusivity and focusing on central and newly transformed apartments to enrich the entire community.

Rooted in Østerbrogade's historical importance, the building now represents the city's future. The preservation of the Bodega—a time-worn bar—embodies the community's authentic spirit amidst rising gentrification. This project illustrates architecture's role in shaping not only physical spaces but also aspirations and ideologies. By uniting preservation with social equity, it bridges past and future, breaking socio-economic barriers, and crafting harmonious spaces that resonate with society's diverse soul.



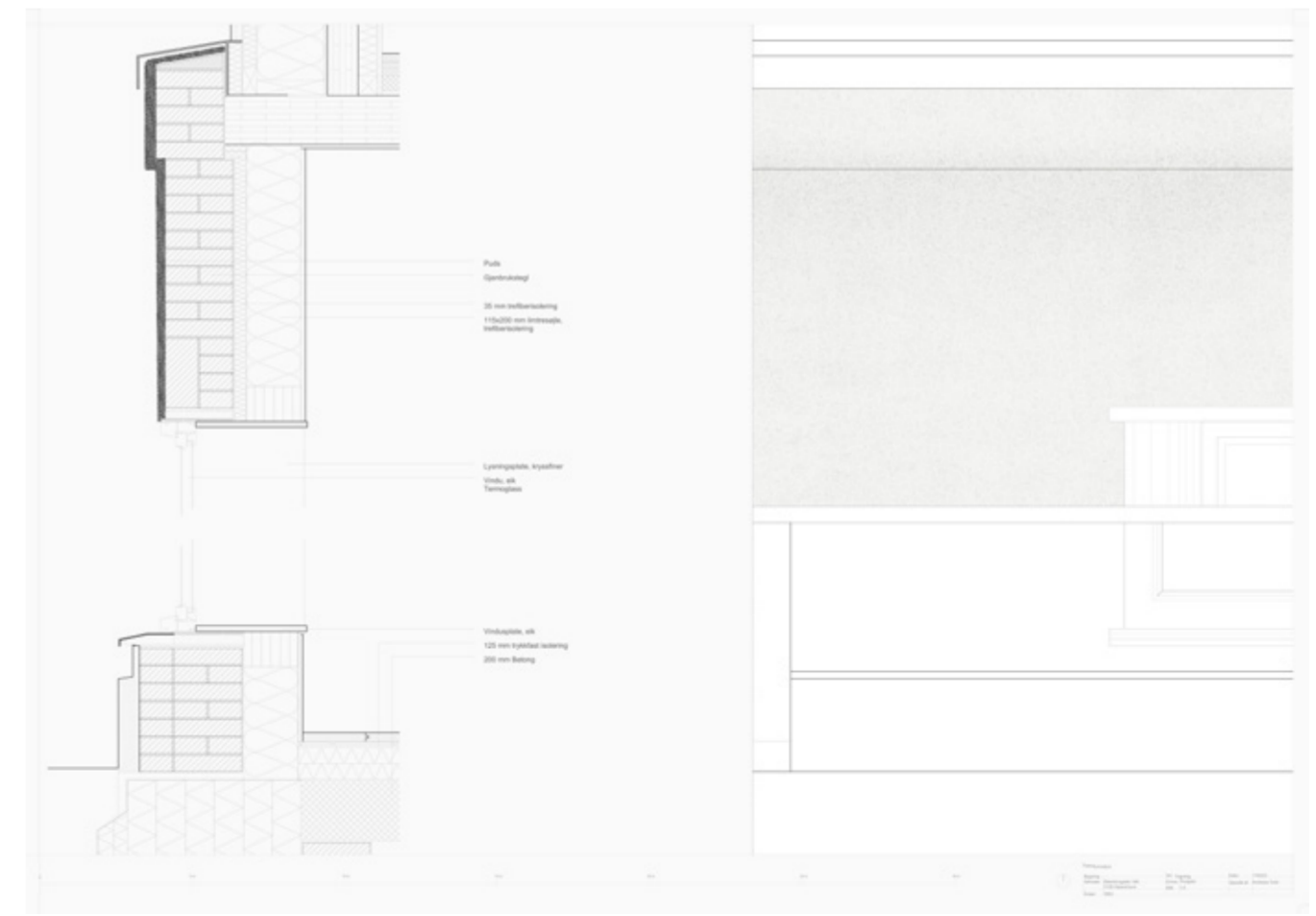
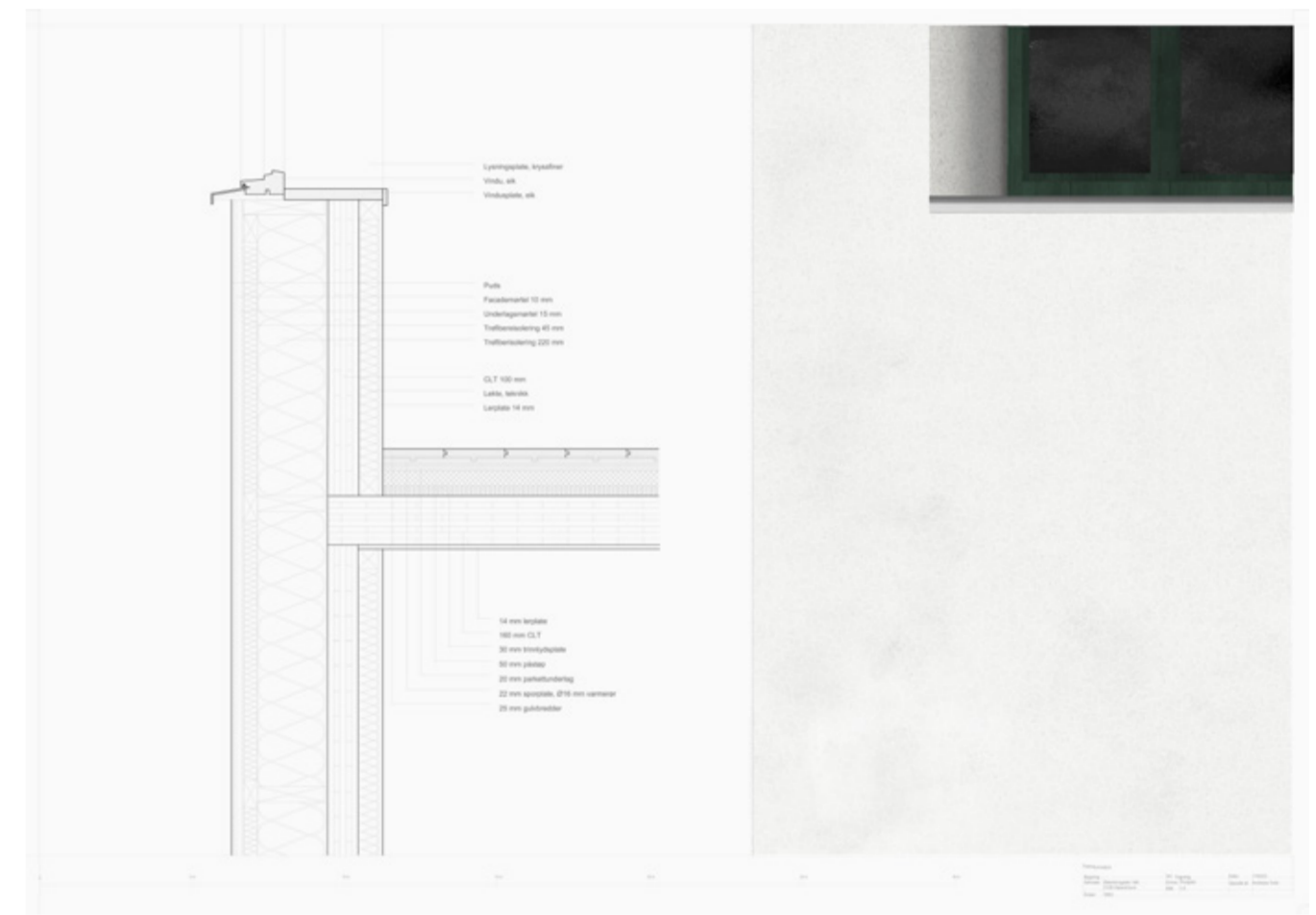
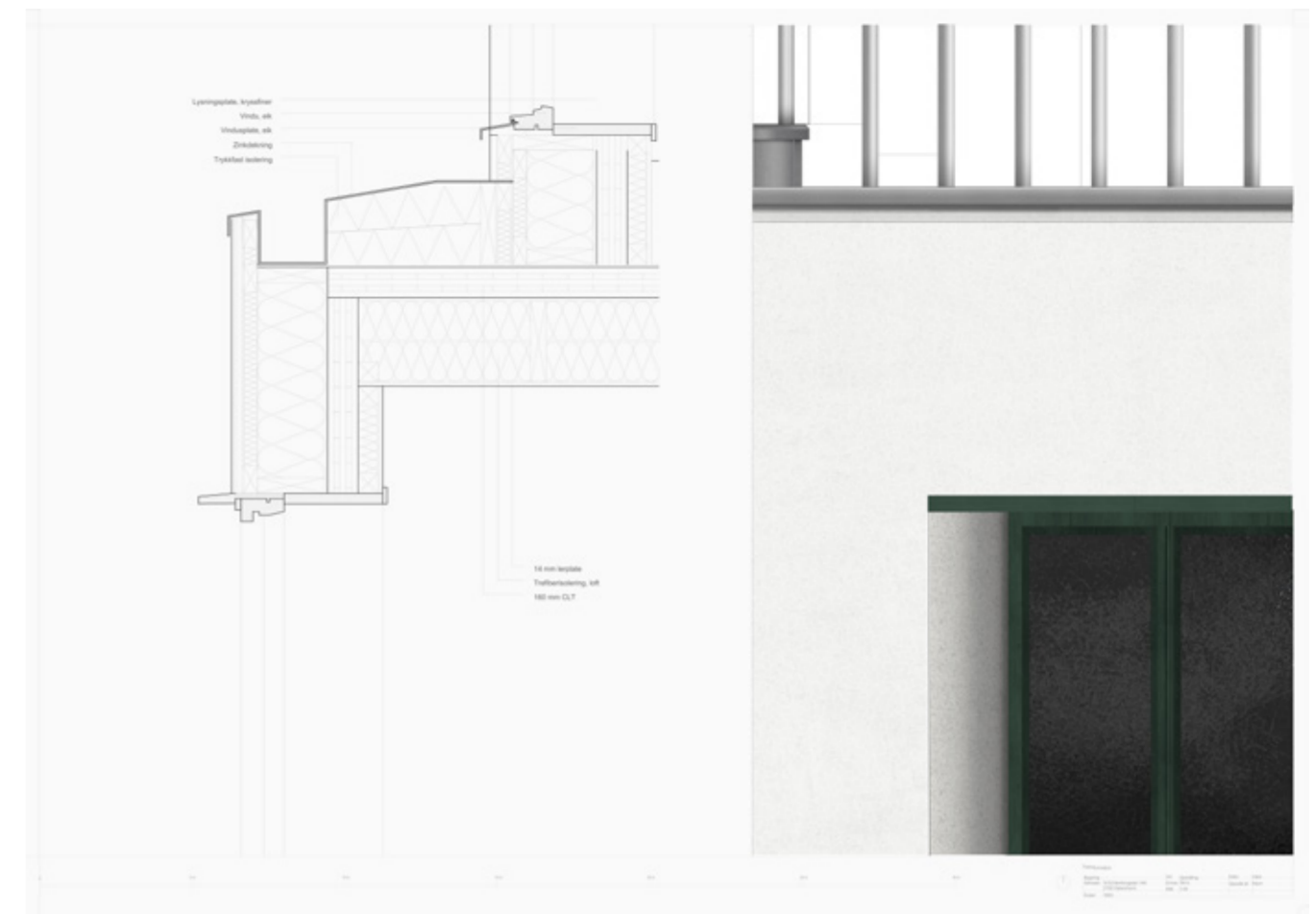
Visualisation of the exterior

Cast models of impressions, and negative space



1:100 and 1:20 Model studies.





On top: 1:50 section & facade.  
On the bottom: 1:100 model photo in

1:5 sections with facade collage.

# Brennbakkvegen 19A Transformation and addition

Private commission - 50's postwar house

Archicad,  
Enscape & Adobe-suite

During the fall of 2021, I undertook the design and planning of an addition to a two-story, two-family home in Norway. The house, originally built in the mid-1950s, required a thoughtful approach to expand its footprint by approximately 50 square meters while adhering to stringent local regulations. As such, the project necessitated a technical dispensation application.

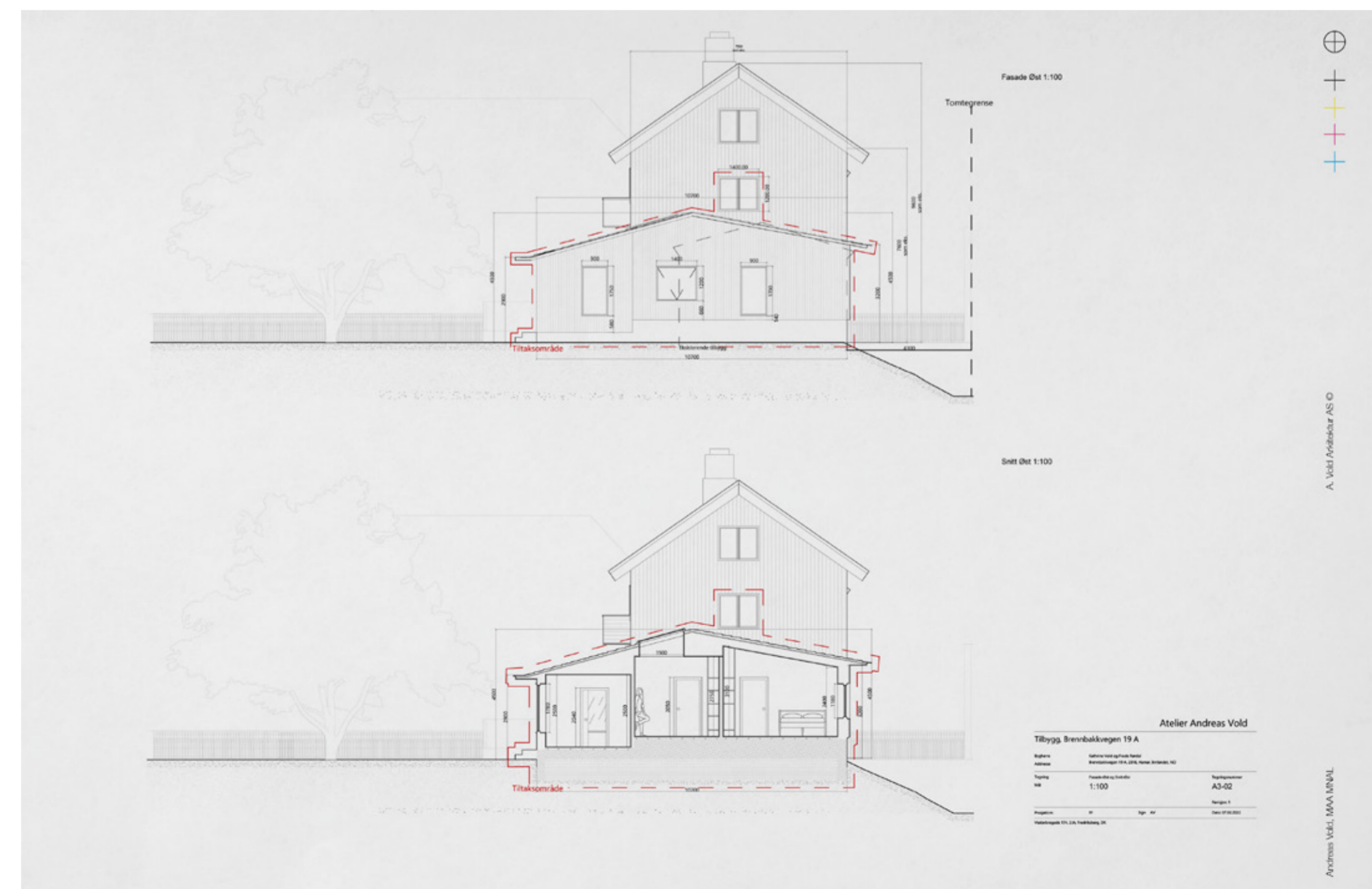
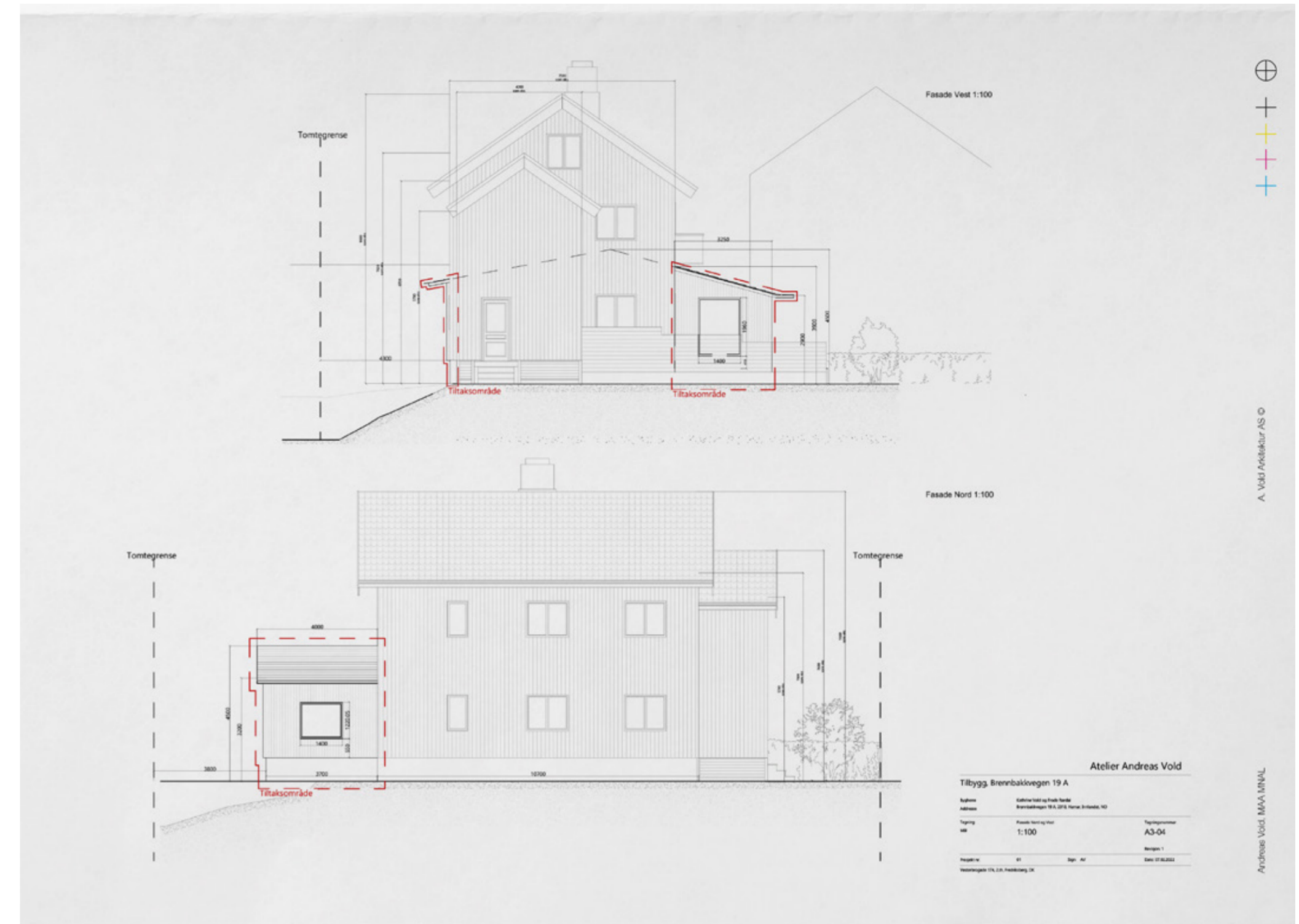
My responsibilities encompassed every phase of the project, beginning with the initial consultations with the client, progressing through the detailed design process, and culminating in the submission of applications to both the Municipality and Statens Vegvesen for the necessary dispensations.

Post-application, my role extended to advising and coordinating with the entrepreneur and on-site carpenters to ensure the seamless execution of

the design. The client had specific requirements for the addition, which included two bedrooms and an office space that could double as a guest bedroom.

Our design philosophy centered on creating an addition that harmonized with the existing structure. We aimed to craft a quietly integrated extension, utilizing the existing foundation provided by the pre-existing hallway. The design subtly accentuated the existing footprint with a slight shift in the façade, enhancing the exterior while maintaining coherence with the original architecture.

Internally, the focus was on using warm, biogenic materials to create a welcoming contrast to the black wooden exterior facade. This choice not only provided a modern aesthetic but also contributed to a comfortable, inviting interior atmosphere.



Exterior photograph.

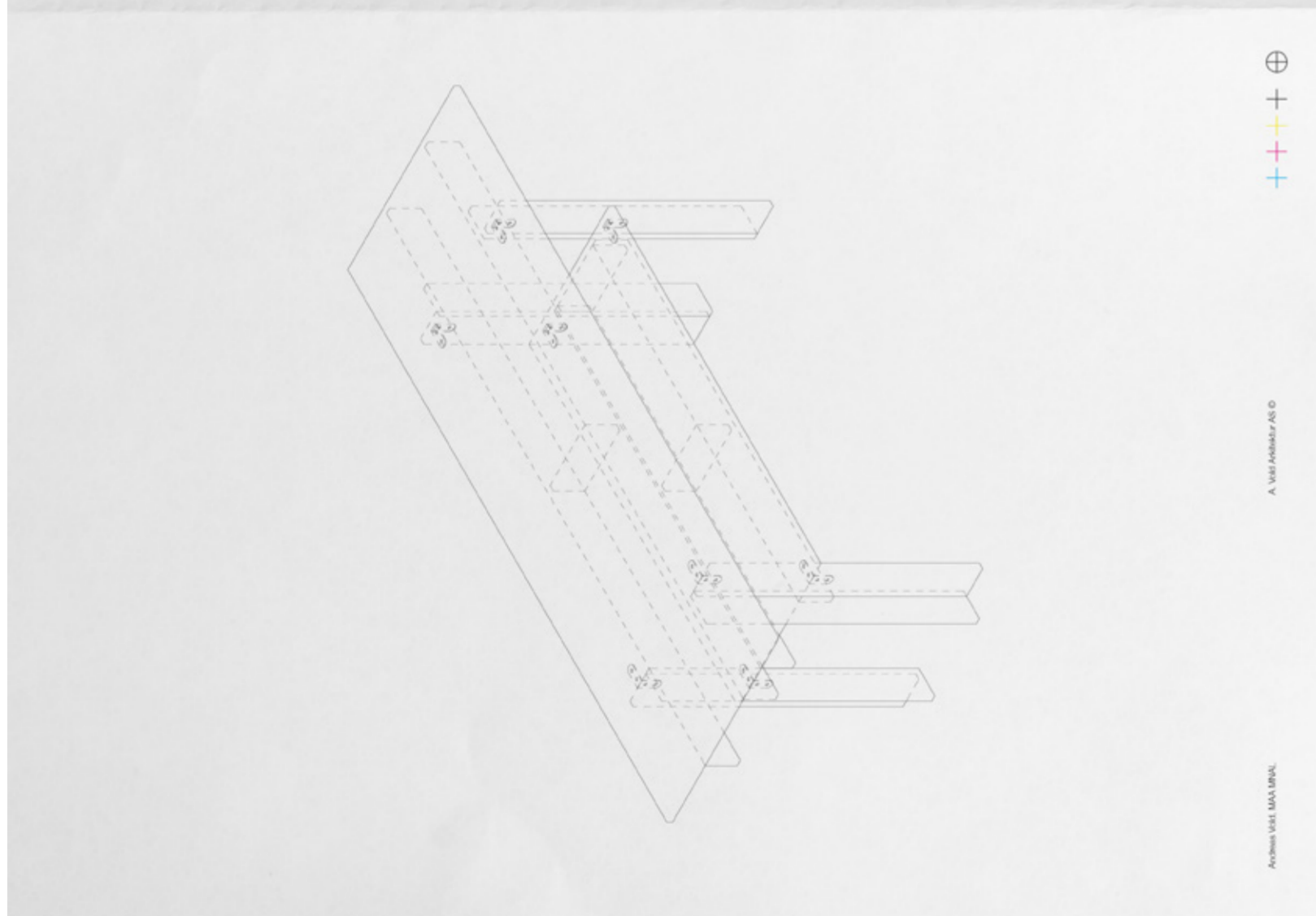
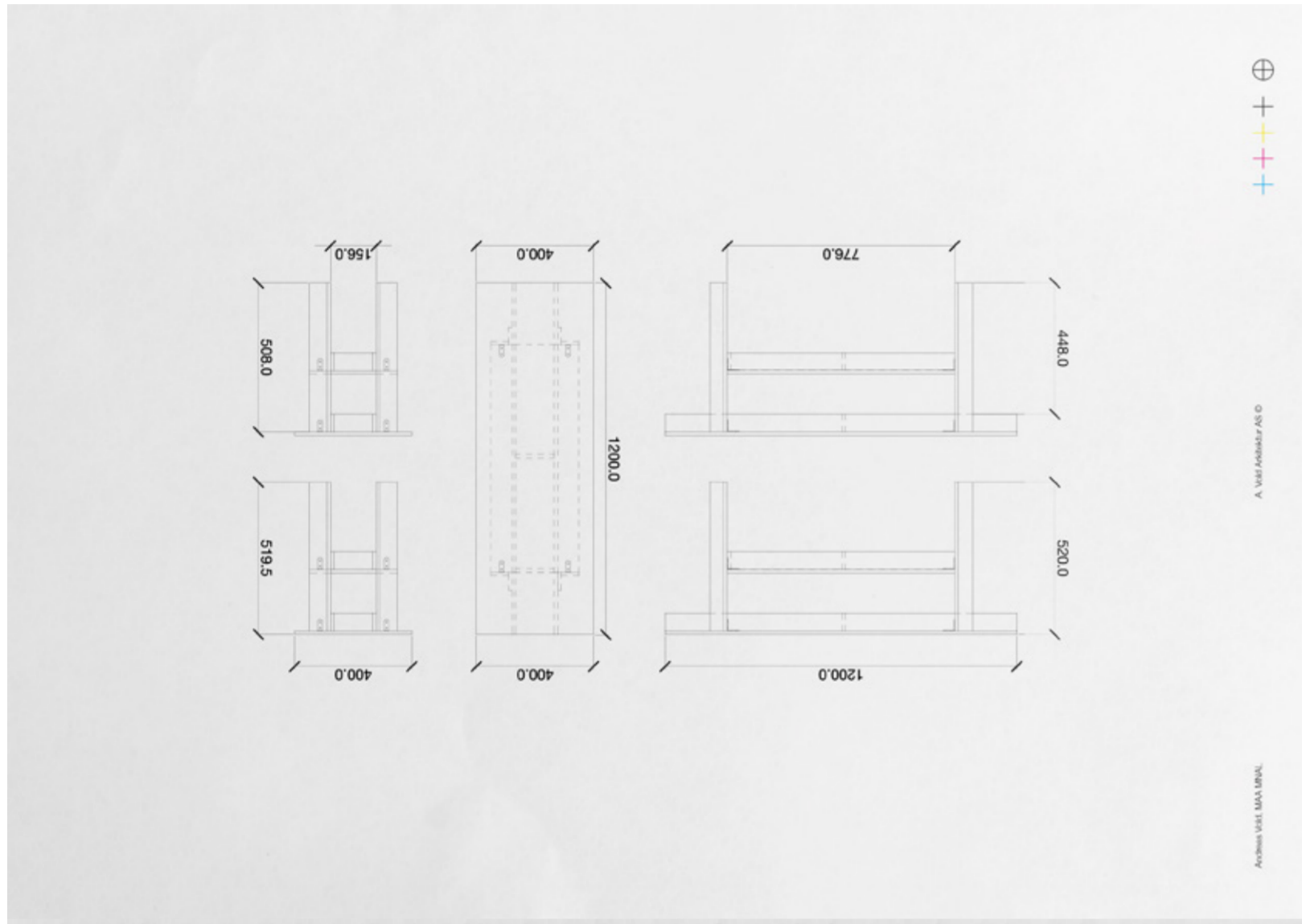
1:100 sections, drawn for the application to the Municipality, in Rhino and Archicad.

# B19A Furniture

Private commission - Polywood DYI

Rhinoceros

Vray



Axonometric, plans and sections in 1:10, 1:5

*Working manual, for easy assembly for a custom made piece of furniture, fitted to the clients needs - and composed of left over building materials from renovation. Easy access to hand-crafted, high-quality furniture - at a fraction of the cost*



Visualisations, as part of a series of visuals portraying the furniture - and aiding in assembly

# Dæmpegård Skovriddergård Restoration

Speculative Project  
w/ Jenny Lund

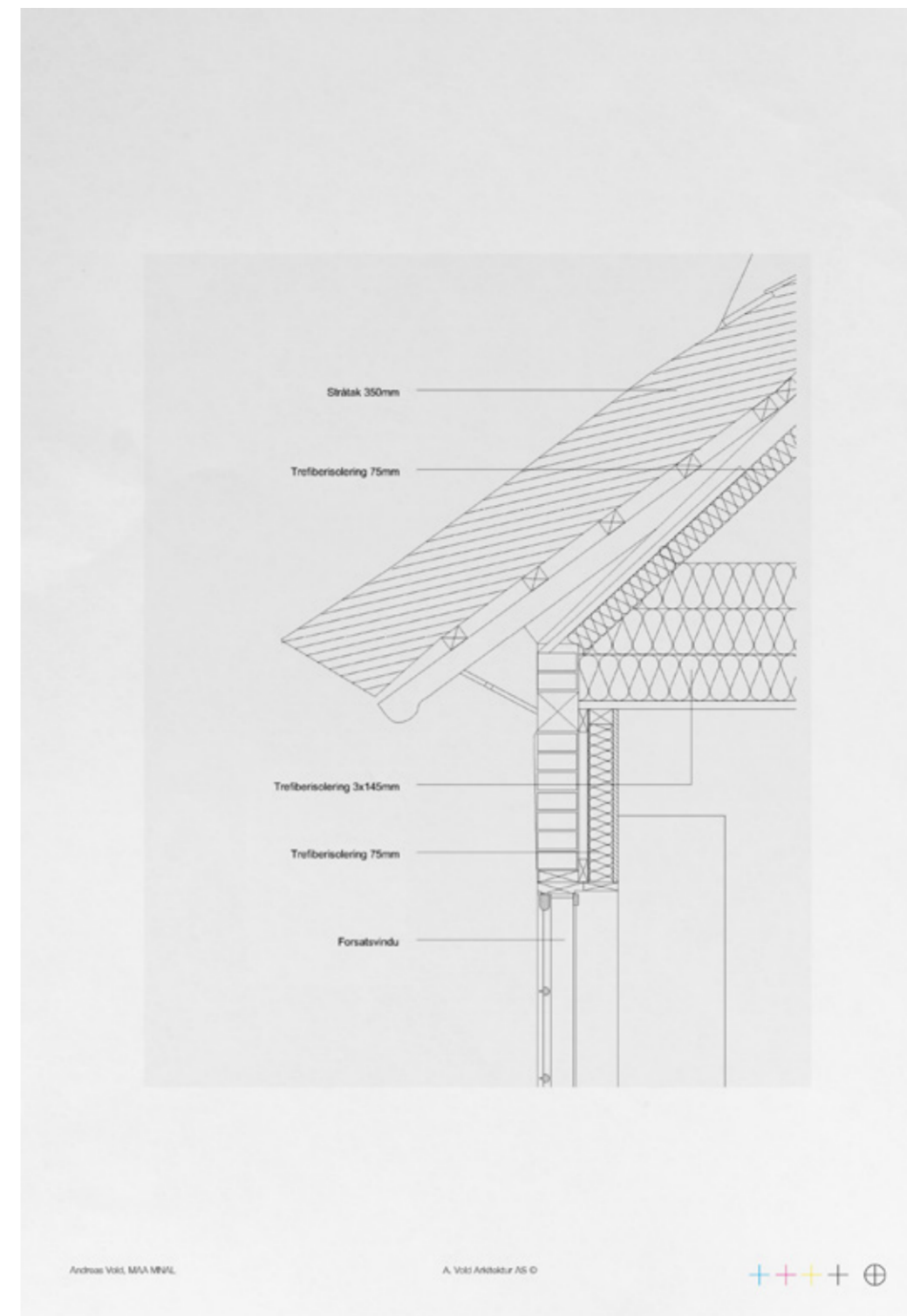
Leica Total station, Autocad & Rhinoceros 7  
Enscape, Vray & Adobe-suite

Dæmpegård Skovriddergård, an old farm dating back to 1786, was established as part of Denmark's initiative to separate forest and farmland. Originally, the "skovridder" served as a forester, overseeing the surrounding forest.

Over the years, the farm and main house have suffered from neglect and poor maintenance, with several additions altering and extending the original footprint. To restore and transform this piece of Danish cultural history, we began with a month-long measurement of the timber-frame house, employing

both the latest technologies and traditional methods.

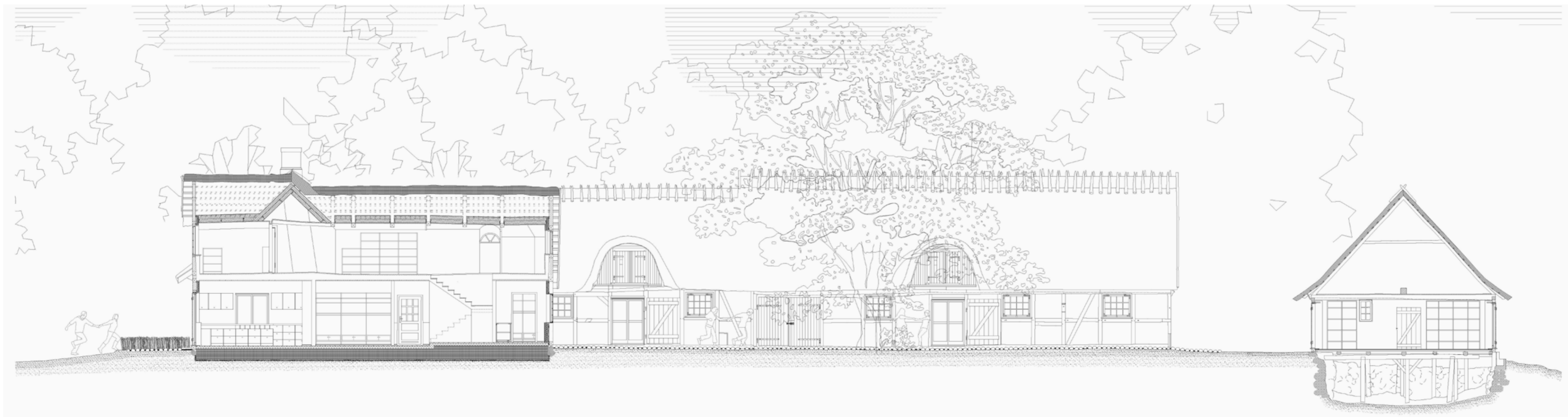
The transformation aimed to shift Dæmpegård from its state of deterioration to a vibrant community asset. It would serve as a center for food culture, with the old barn offering summer accommodation and the main house housing a kitchen and restaurant. This venue would provide organizations, schools, and private attendees the opportunity to engage in a knowledgeable community, participating in every step leading up to their meal.



1:5 Section, new biogenic insulation, et. al



Photo registrations on site



1:50 section  
23

# Bredkærs Vænge 8 Transformation

Speculative Project  
w/ Kasper Hübertz

Rhinoceros 7 & Autocad  
Enscape, Vray & Adobe-suite

Arne Jacobsen's architectural firm was commissioned to design prototype houses for Archibo II, known as Kvadreflex. These prefabricated houses featured nine modules within a steel structure and a single pyramid level, allowing for flexible expansion based on residents' needs.

Originally, three houses were arranged around a shared courtyard with communal amenities such as a carport. Over time, modifications like new pyramid levels were added to address moisture and cold issues, compromising the original architectural quality.

To extend the life of the Kvadreflex houses, three interventions were proposed:

Redesigning the Shared Area: Removing property boundaries to create a cohesive communal space with integrated rainwater management.

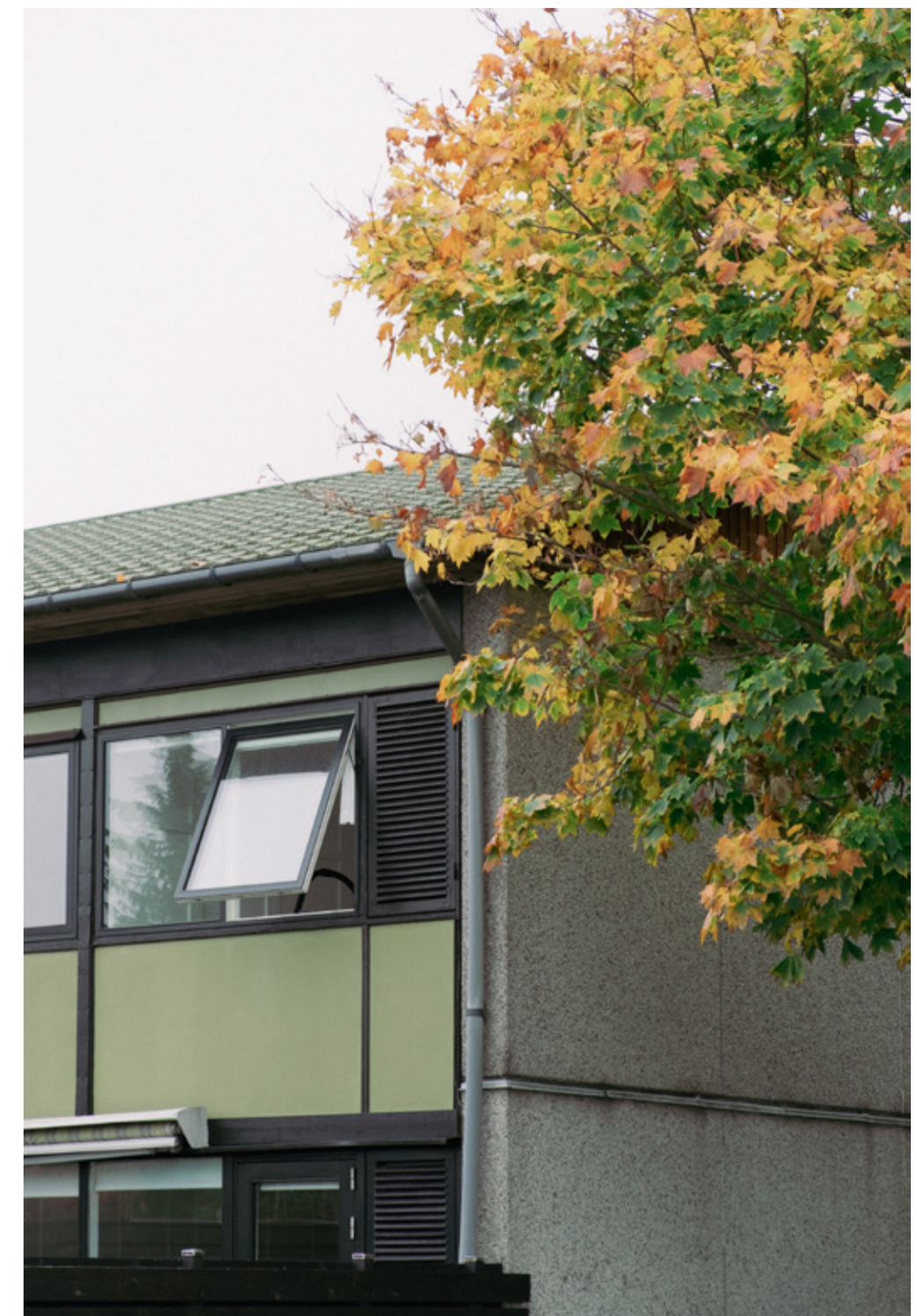
Upgrading the Walls: Replacing thin, poorly insulated walls with lighter, biogenic materials and a uniform facade treatment.

Transforming the Roof: Reconfiguring the roof into a flatter structure with larger overhangs, preserving the steel framework while using new materials.

The project aimed to balance idealistic and pragmatic approaches, prioritizing technical condition and material responsibility. Despite the challenges, the proposal sought to retain the spatial value of Kvadreflex, particularly its distinctive structure, ceilings, and skylights, while making necessary improvements for sustainability and longevity.



1:15 Section of the new cladding



Photograph of Bredkærs Vænge

1/3 interior photographs



1:10 Working and research model



Sections in 1:50 of the compound