

THOSE WHO POSSESS DIRT



Image 1 - TWPD residency at New Glasgow Society - Clarina Tse, 'Bubbling in Thick Time', film screening and hanging natural dye fabrics. June 2022



Image 2 - TWPD residency at New Glasgow Society - walking workshop and exploration of High Street wastelands led by Keith Watson - Curator of Botany at Glasgow Life Museums. June 2021

Image 3 - TWPD residency - open source library. June 2021



Image 4 - TWPD residency at New Glasgow Society, foraged plant solar dye mingling with mould



Image 5: TWPD residency - using windows as public displays of work-in-progress and experimentations, featuring natural dye hanging fabrics and Leaky Vessels p.2 by Shona Robin Macpherson and collaborative solar dye vessels. June 2021



Image 6 - TWPD residency - natural dye station, quilts (ongoing), consists of small dye test fabrics stitched together, ceramic hoops, by Shona Robin MacPherson. June 2021



Image 7: Making Listening devices for *Glistening: A Listening and Attunement Workshop* led by TWPD at Deveron Arts, Huntly. Part of Hussein Mitha's project *The World is Ours, in Spite of All*, with local Youth Climate Warriors and artists. July 2022



Image 8: Movement exercise as part of *Glistening: A Listening and Attunement Workshop* led by TWPD at Deveron Arts, Huntly. Part of Hussein Mitha's project *The World is Ours, in Spite of All*, with local Youth Climate Warriors and artists. July 2022



Image 9: Group photo as part of *Glistening: A Listening and Attunement Workshop* led by TWPD at Deveron Arts, Huntly. Part of Hussein Mitha's project *The World is Ours, in Spite of All*, with local Youth Climate Warriors and artists. July 2022



Image 10: Listening in the woods for *Glistening: A Listening and Attunement Workshop* led by TWPD at Deveron Arts, Huntly. Part of Hussein Mitha's project *The World is Ours, in Spite of All*, with local Youth Climate Warriors and artists. July 2022



Ways of Walking: Part 1

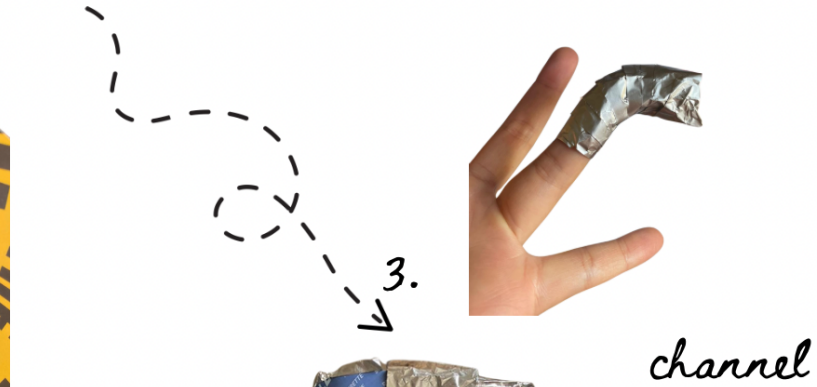
Follow the prompts below to make your own listening device, then go for a walk... what can you hear?

Listening Device Features:

1. Going from a large hole to a small hole
2. Tightly connected tunnel
3. Unexpected angles, periphery
4. Curvy, gradual



Curl



Softer

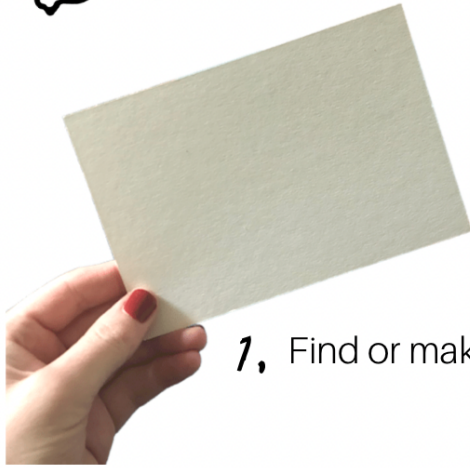
Materials: old magazines, wire, tape, anything in your recycling bin! You can line the inside of your device with foil or crisp packets for extra sound bounce.

Surveillance



Ways of Walking: Part 2

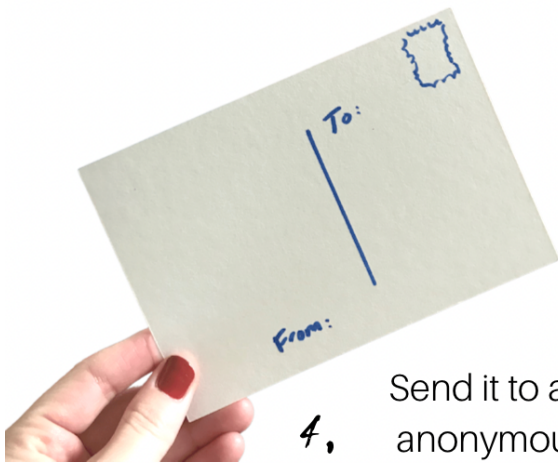
Postcards from a Wasteland



1, Find or make a blank postcard



2. Visit a wasteland near you, what does the word wasteland mean to you?



4, Send it to a friend, an anonymous activist, another wasteland or an imaginary place or time!



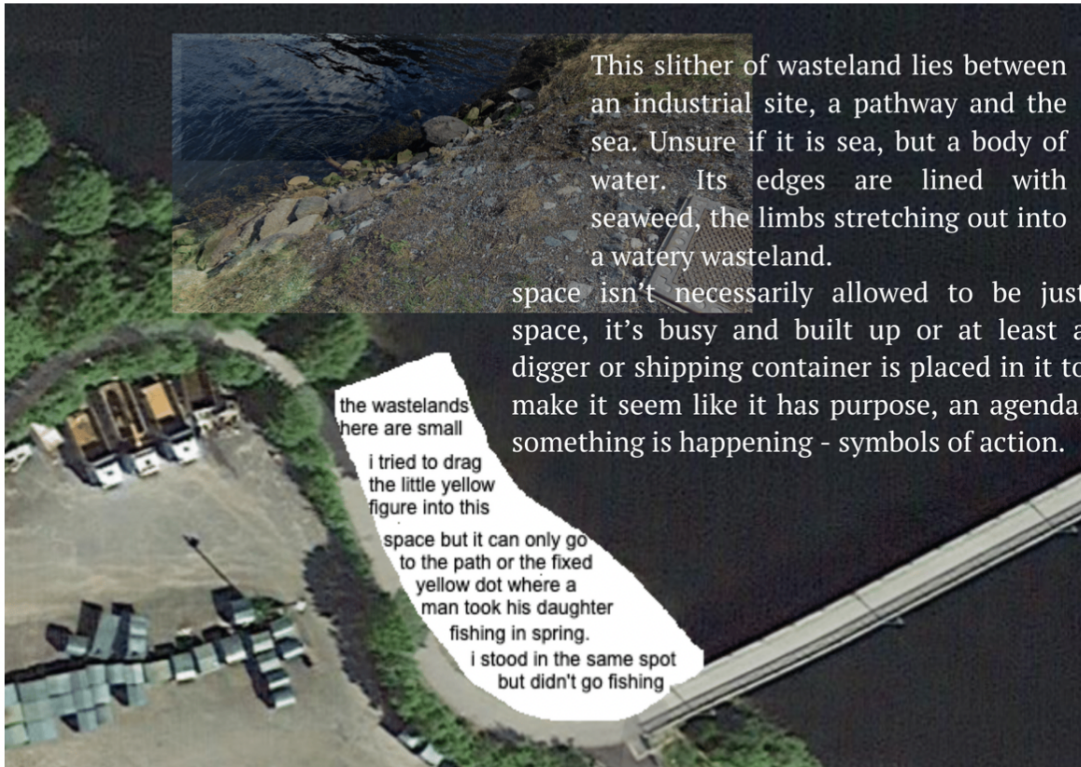
3,

Make a response to the wasteland in words, poetry or drawing. You can forage small parts of the wasteland, draw a map, write about a plant...



Postcard example

front



back



A spiny curling fern – prehistoric. Purple flowers, pine cone in shape, shoot upwards from spiky green stems. *Lupinus polyphyllus*

Sand and gravel and moss and soil create a soft place for my feet to land. The smell of limes mixed with salt. There are tall plants, bushy, that come up to my hip and lick my hand, fuzzy like a cat's tongue. There's a moment in this place where you walk from the concrete path, into a small jungle, onto a beach, a coast, and then the water hits. A place of graduals. Tense. Slugs don't belong by the sea. Mice don't belong by the sea. Who lives here? The plants seem happy here. A small oak tree is trying to grow. I think the plants are happier without me in-between them. I'm going to go now. I'd say this wasteland says hi, but I don't think it does. I think it says let us continue to collect rain on our leaves, we are quite content being damp from the water from the sky and the water coming up to our roots. I think you'd like it here. Maybe you could learn from each other. I don't think you've seen these bushy purple spiky creatures before.

With love,

(60.379825, 5.348857)

60° 22' 47.37" N 5° 20' 55.8852" E

to:

(37.001542, 25.225249)

37° 0' 5.5512" N 25° 13'

30.8964" E

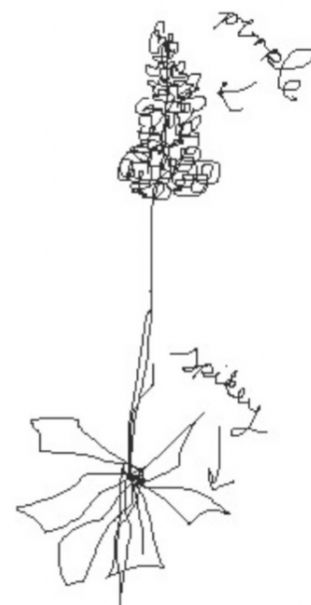
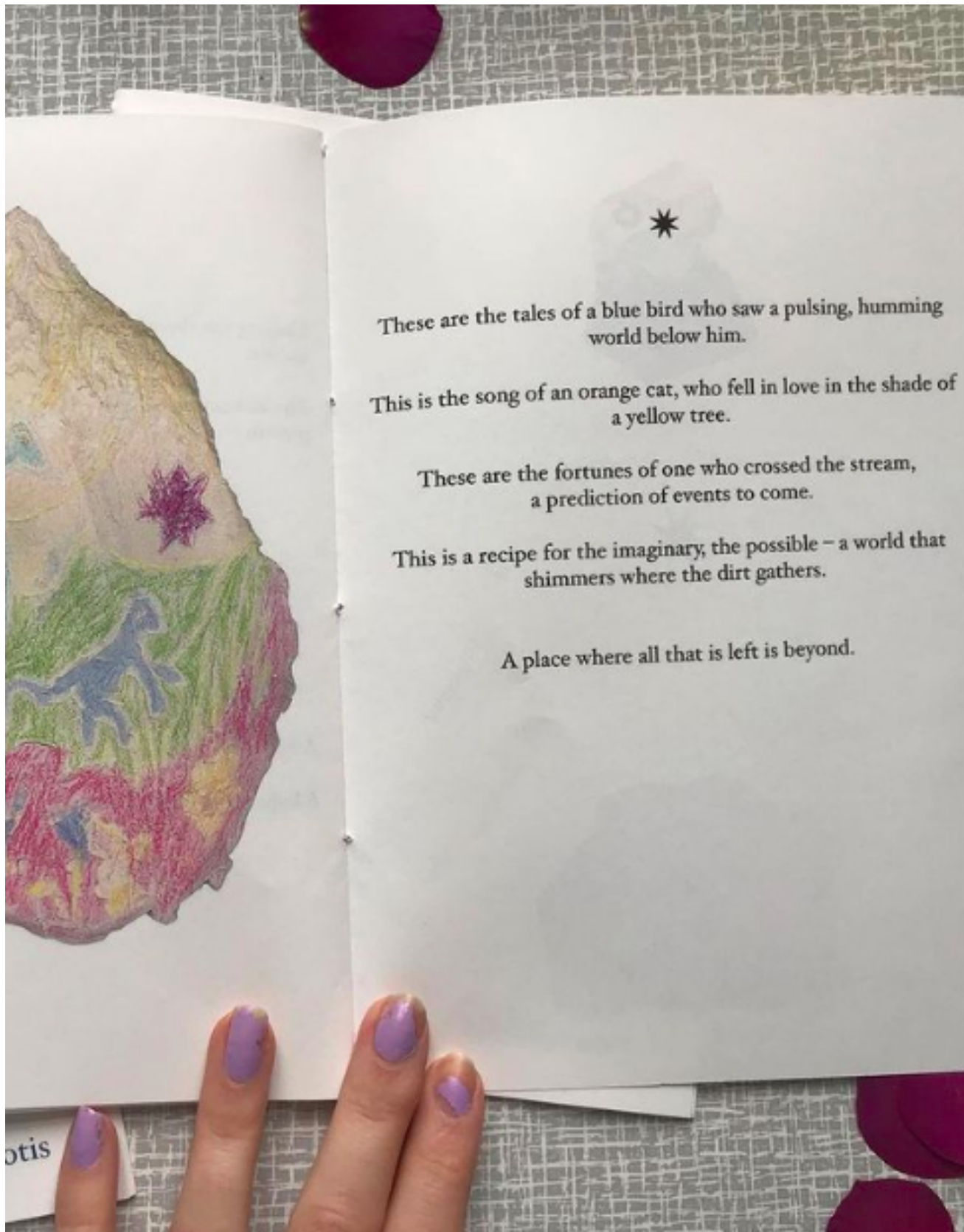




Image 14: Shona Robin MacPherson *Ins and Outs, Ups and Downs*, part of *Thread* at Elysium Gallery Swansea, Wales. Rhubarb root dyed silk, sound, wooden furniture, printed books of poetry, collected seeds in pockets. See website for further info. October 2021.



Image 15: Clarinda Tse *Shower Duster*, a durational performance presented through Double Thrills Buzzcut with Les Urbaines at CCA Glasgow, Sept 2022. Sodium alginate, calcium lactate, domestic vessels, foam, garden netting, waterproof lights



These are the tales of a blue bird who saw a pulsing, humming
world below him.

This is the song of an orange cat, who fell in love in the shade of
a yellow tree.

These are the fortunes of one who crossed the stream,
a prediction of events to come.

This is a recipe for the imaginary, the possible – a world that
shimmers where the dirt gathers.

A place where all that is left is beyond.

Image 16: Ruby Eleftheriotis: 'All that is left of beyond' - page from a publication developed alongside the exhibition *Hyper relics* in Bergen, Norway, May 2022.