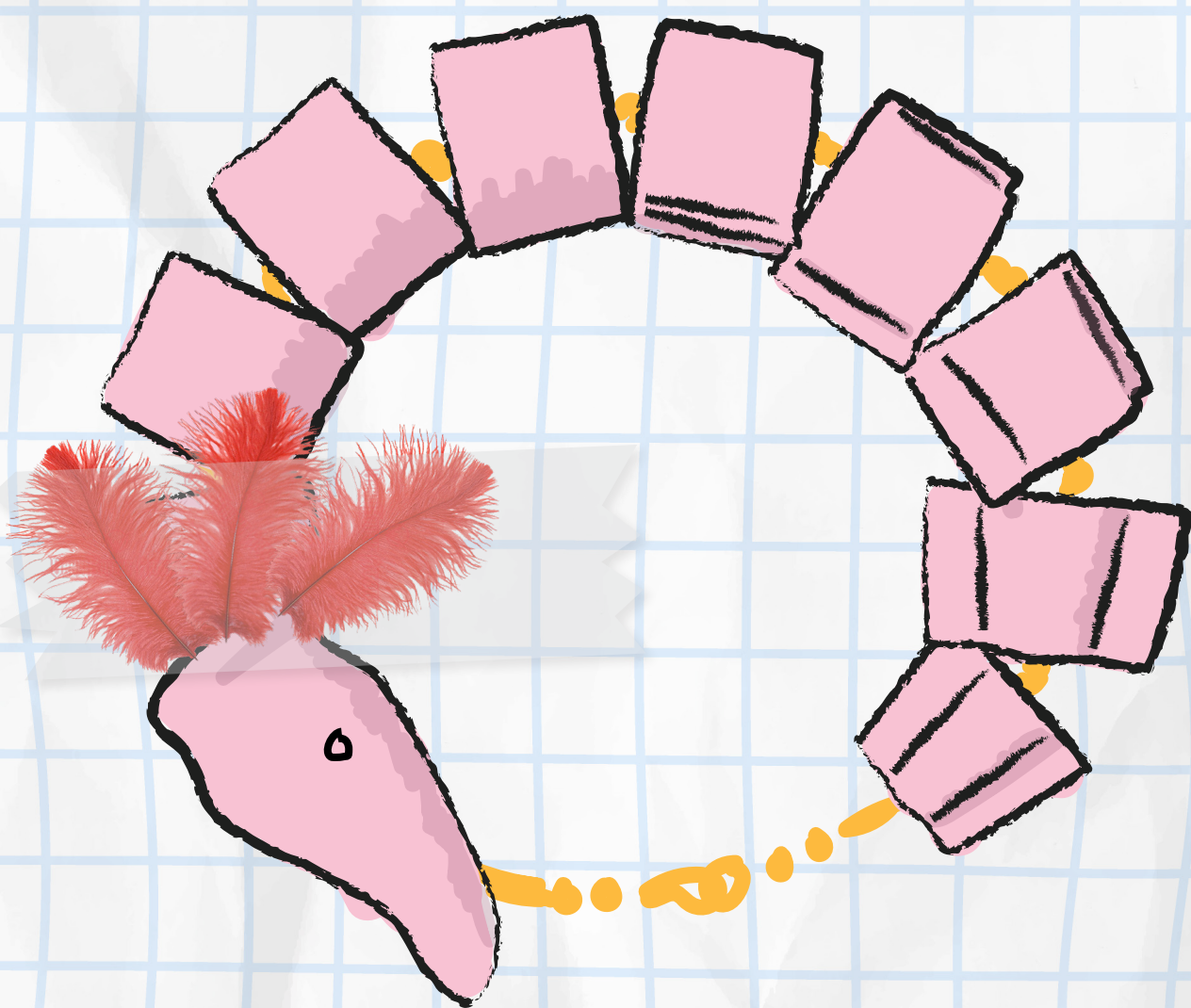
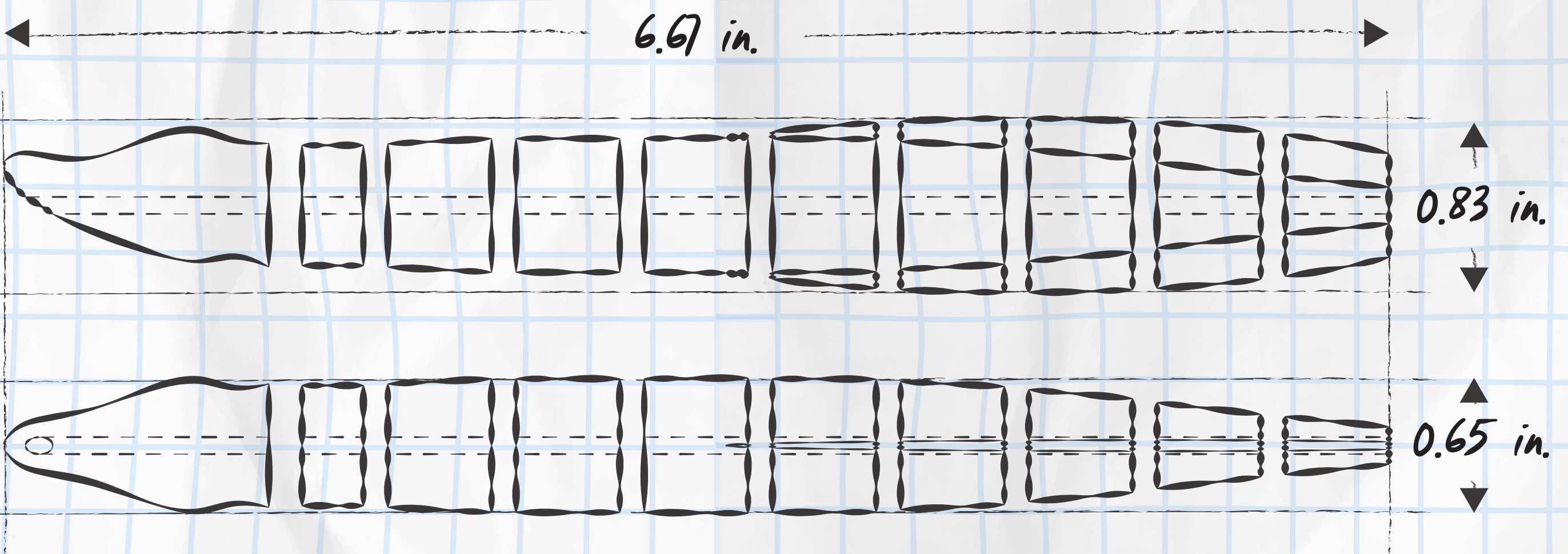
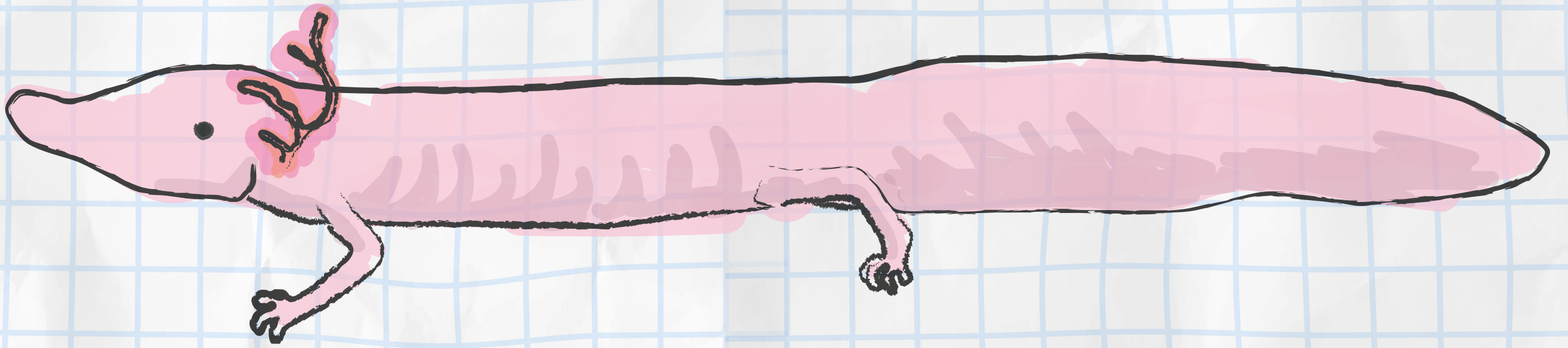


Waste Watcher

BY EMMA MCBRIDE



Waste Watcher is a bracelet you don't buy. A reminder to yourself and those around you that the waste we create in Austin has consequences. Waste Watcher is inspired by the likeness of a Blind Salamander, native to the water-filled caves of the Edwards Aquifer and endangered due to the water's pollution. Tourists and Austinites can give back to the community of Austin by picking up trash surrounding the Barton Creek area and exchanging it for a bracelet.

