

DREAM HOME: BONDI JUNCTION Judy Barouch

A palette to nourish the

Colour and light have played a major part in overcoming dull, cold interiors and brightening up the look of this two-storey semi.



Out of sight ... open treads and a glass balustrade make the staircase less intrusive. Photos: Marco Del Grande

Upon arrival at architect Jacque Ezer's family-friendly, three-bedroom semi, exuberant colour greets the visitor. Providing just a hint of what lies ahead, the glow from the front door's purple-toned glass pane echoes the glossy purple of industrial-style sliding doors that lead off the hallway into Ezer's home office.

"Colour makes me extremely happy," she says. "I've incorporated many different colours throughout the house."

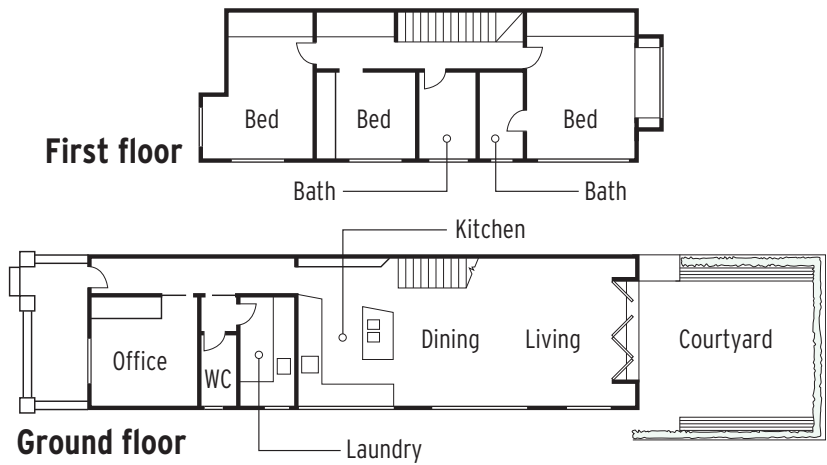
The heart of the house – a kitchen/living/dining area – features bursts of letter-box red in the kitchen's splashback tiles and the island's resin benchtop.

Then there are the joyous jolts of sunny yellow: in artworks and in the upstairs children's bathroom. Each bedroom has a different coloured feature wall with door handles powder-coated to match.

This fun-filled house is a far cry from the formerly dark and sombre semi that Ezer and her husband, Garrath Styles, bought in Bondi Junction.

"When we bought the house, the plan always was to renovate," she says.

Council approval was obtained for hardstand off-street parking, which the couple put in straight away, but renovations had to wait due to budgetary restrictions and the fact the younger of their two sons was still a baby.



Red alert ... letter-box red is the standout colour in the new kitchen.



**Offer available for new applications as part of the PowerVantage or HSBC Premier Package completed between 29/12/09 – 26/03/10. Excludes refinancing of existing HSBC loans and Lo Doc Home Loans. Not compatible with any other offer. Loans must settle by 31/07/10. Minimum loan size \$250,000.*