

Client Narrative

Stephen Wong - Fashion & Costume Designer

About Stephen



Stephen is a Toronto based fashion/costume designer and co-creator of the label Greta Constantine. He has been working in the industry for over 14 years and his work has been featured internationally in magazines, television and at red carpet events.

Why fashion?

“As long as i can remember, I’ve always loved fashion. To me, it’s an expression of who you are and how you would like to be seen. The clothing you put on can affect how you are seen... It can make you stand out. It can make you blend in/disappear. It can make people respect you. It can make people fear you. Fashion is the armour that you wear to protect you in this world.”



Professional needs

Must Haves:

- Work surface (60" wide and a minimum of 100" long)
- Machines (1 straight stitch, 1 serger, 1 blind hemmer, 1 vacuum press steamer, kick press for grommets/eyelets/rivets)
- Standing steamer
- Organizing system for small findings/hardware, fabric storage (bolts and folded)
- Male and female dress forms

Extras

- pattern grading/making program
- large format printer

Professional needs



straight stitch



serger



kick press



steamer



vacuum press
steamer



male
dress form



female
dress form



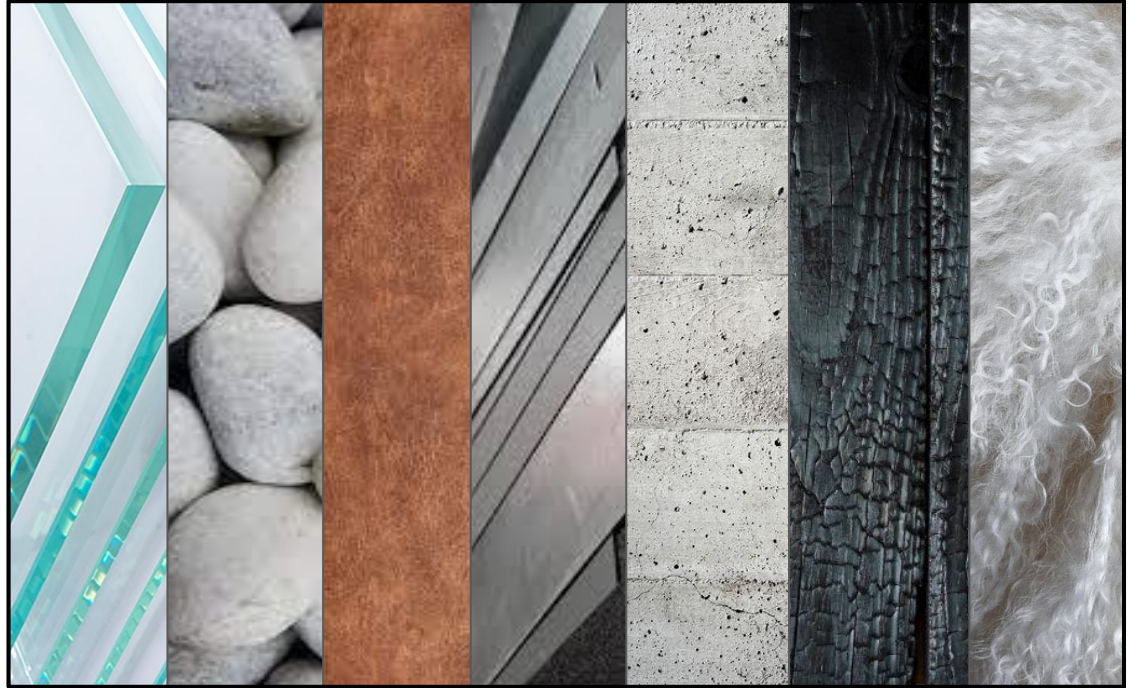
blind hemmer

Lifestyle needs

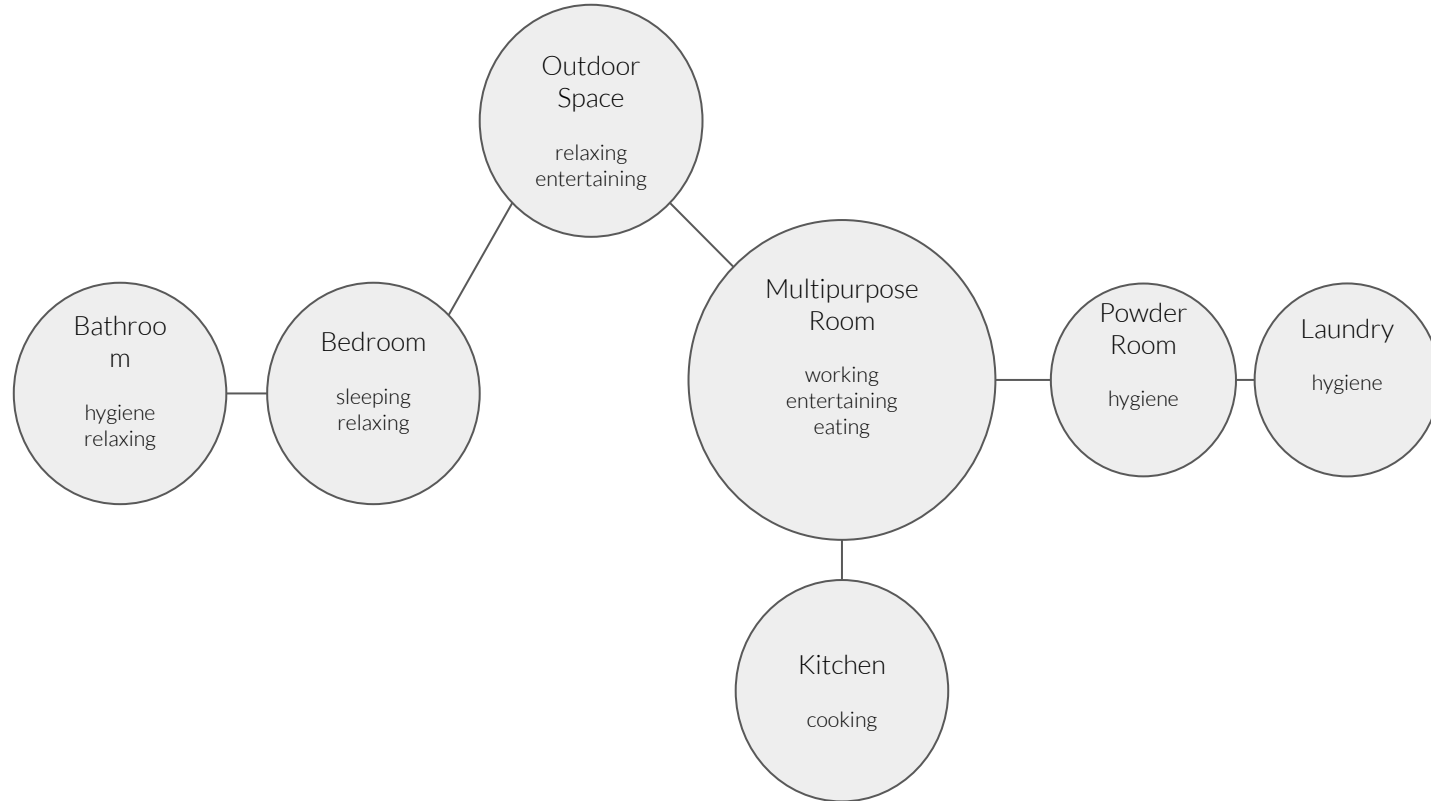
- Stephen lives with his two French Bulldogs, Pearl and Pickle, who need easy access to an outdoor space.
- Weather permitting Stephen like to bike year round and needs appropriate storage for his bicycle.
- Stephen doesn't watch much television so doesn't need one in his living space but would like adequate seating for friends and clients.
- He enjoys taking care of his house plants which need a variety of lighting conditions.
- "I tend to pick one space and spend all my time there. Even if I have other spaces/rooms, I usually just keep to one so someplace with an open, multifunctional, clear space that is void of any obvious identifiable purpose."

Aesthetic

- Clean
- Stark
- Neutral
- Open
- Light
- Comfortable
- Balanced
- Natural
- Textural



Activity Adjacency



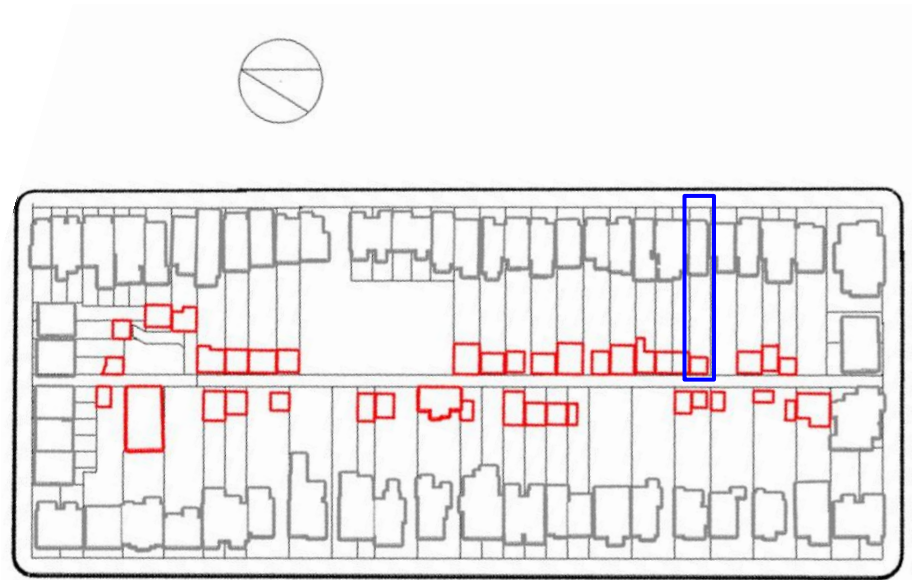
Site Proposal - 552 Dovercourt Road

Lot Size: 7.6 m x 59.4 m

Existing Structures

Garage: 6.2 m x 5.8 m

House: 6.0 m x 17.2 m



Precedent 1 - House for Architectural Heritage

Architects: Leopold Banchini Architects & Noura Al Sayeh

Year : 2017 Location: Al Muharraq, Bahrain

Use: Houses collection of architectural sketches and drawings by John Yarwood and serves as an architecture exhibition space for architecture exhibition.

Materials and construction: Beam structure with reinforced concrete

Reason for choosing: Materiality, open space, small site.



Precedent 2 - Islington House

Architects: McLaren Excell

Year : Unknown Location: Islington, London

Use: Kitchen and dining extension on a grade II listed Georgian townhouse

Materials and construction: In situ concrete

Reason for choosing: Materiality, small site, functional space



Precedent 3 - Pawson House

Architects: John Pawson

Year : 1999 Location: London

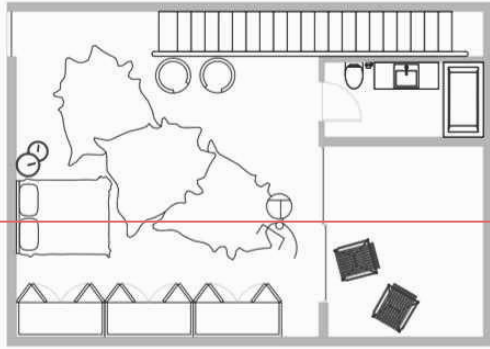
Use: Renovated home

Materials and construction:

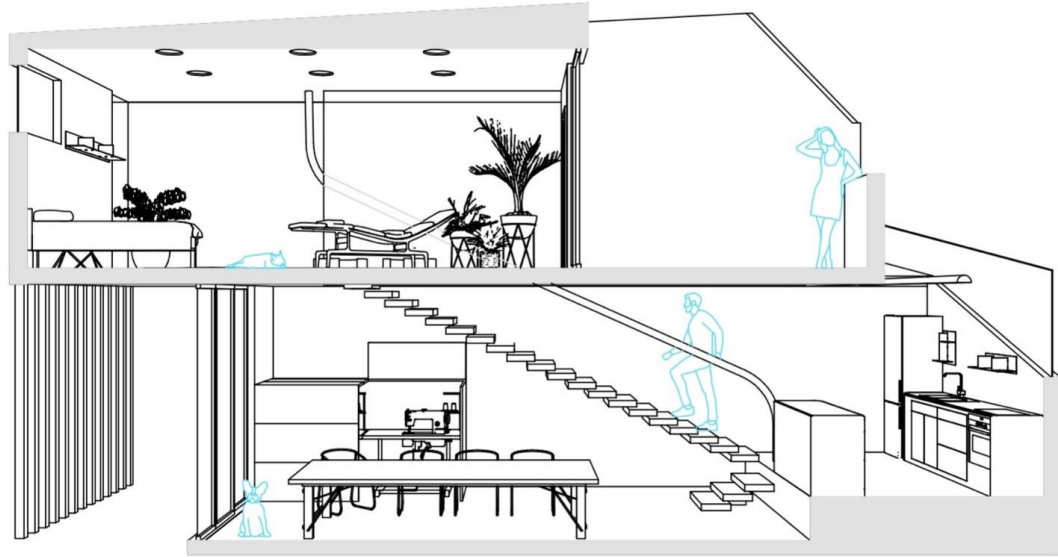
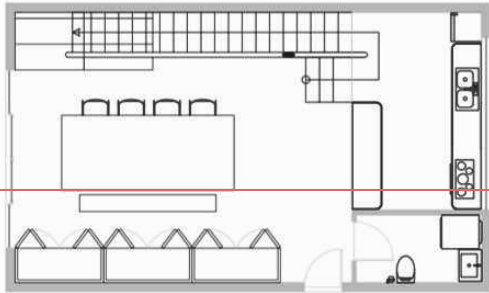
Reason for choosing: Materiality, small site, spatial continuity.

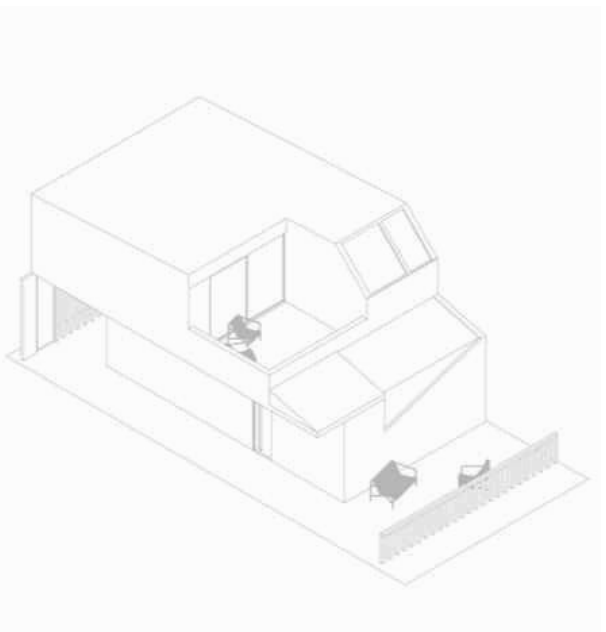


Second Floor



Ground Floor





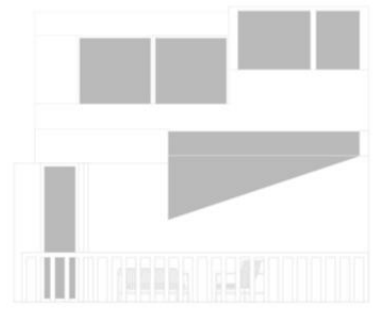
South



West



East



North











