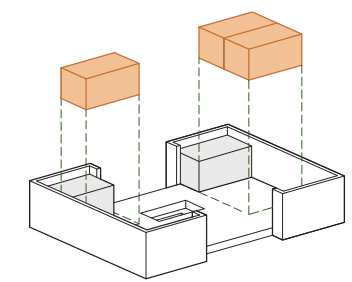
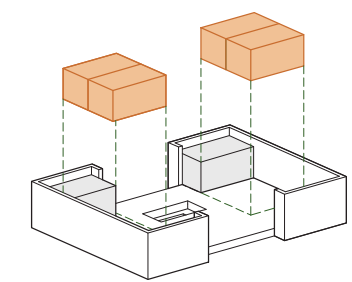


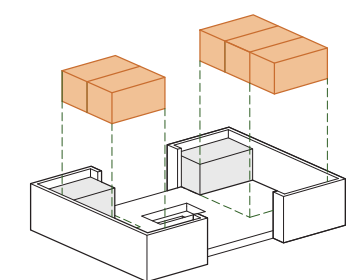
Aggregation schemes for multiple plots.



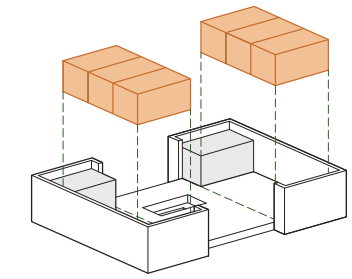
Core module for family type A.



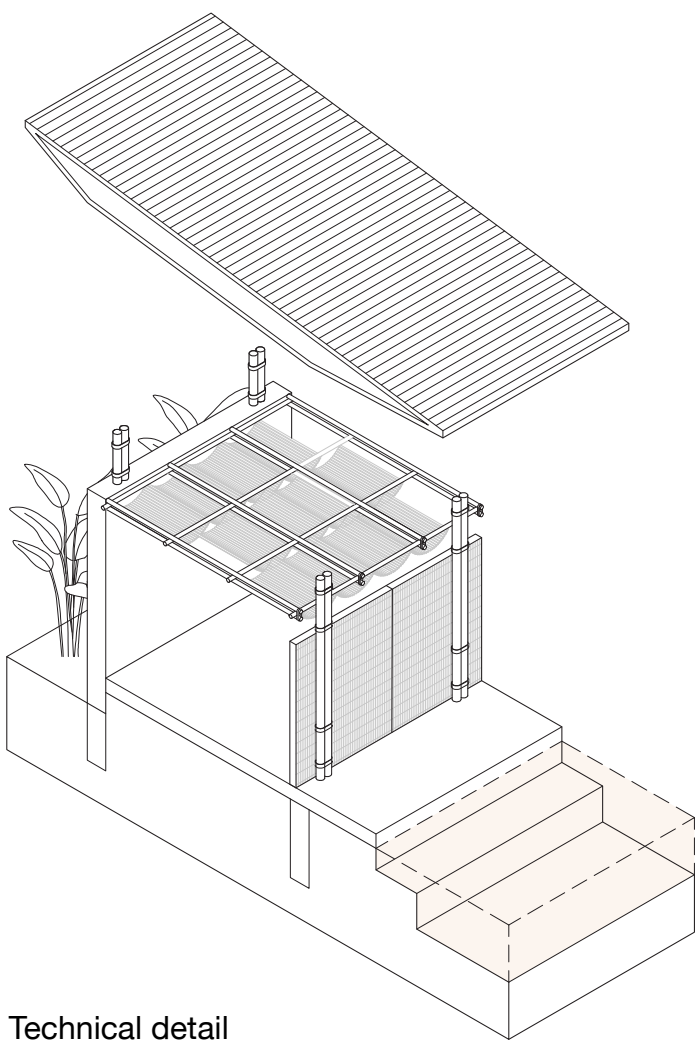
Core module for family type B.



Core module for family type C.



Core module for family type D.



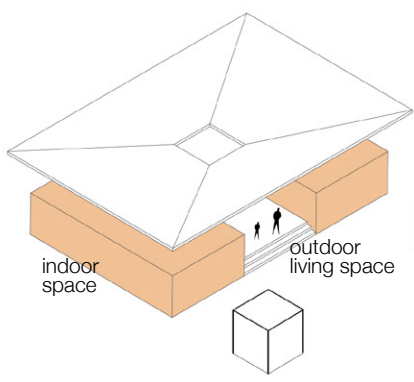
Technical detail

### Exploring the concept of home.

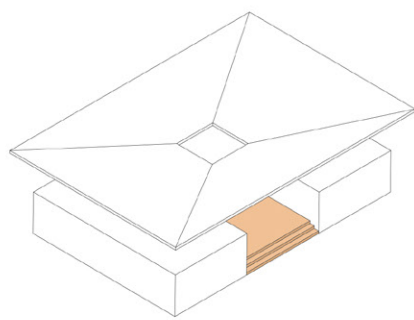
What is my home? Is it where I grew up? The place that made me who I am? Home is intricately tied to emotional well-being and the roots we establish. It goes beyond bricks and mortar; it is where we find solace, form our identities and cherish memories. However, for those who lack a residence, it is not merely the absence of material possessions, but also a profound sense of exclusion and social disengagement that they endure. This lead us to ask ourselves, what do we, as architects, have within out reach and which role do we take in this changing world?

### Architectural vision: Embracing public spaces.

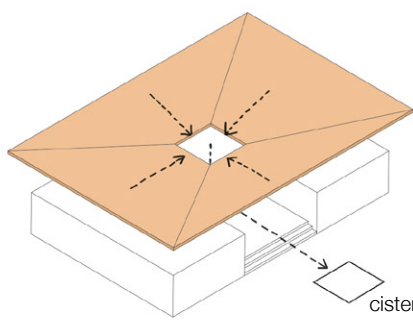
Our architectural vision centers around creating a communal heart within the house—a central outdoor living space where the family gathers for dining, relaxation, socializing, cooking, and studying. Understanding the Nigerian preference for communal living and sharing, we made this central space the spine of our design. It offers shade from the sun while retaining an open, outdoor ambiance, providing residents with a place to come together. This is where life happens, where a sense of home is nurtured.



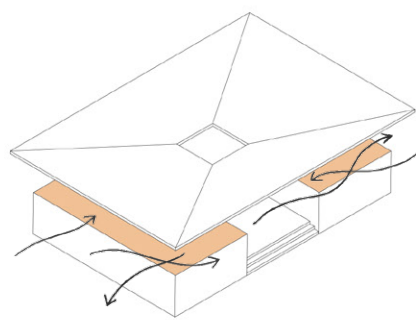
CORE MODULES



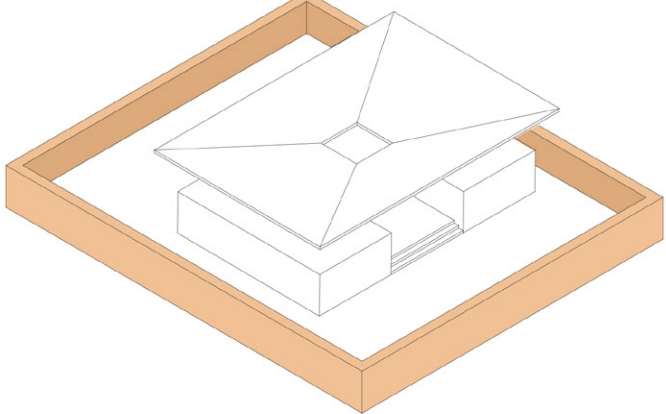
RAISED FLOORING



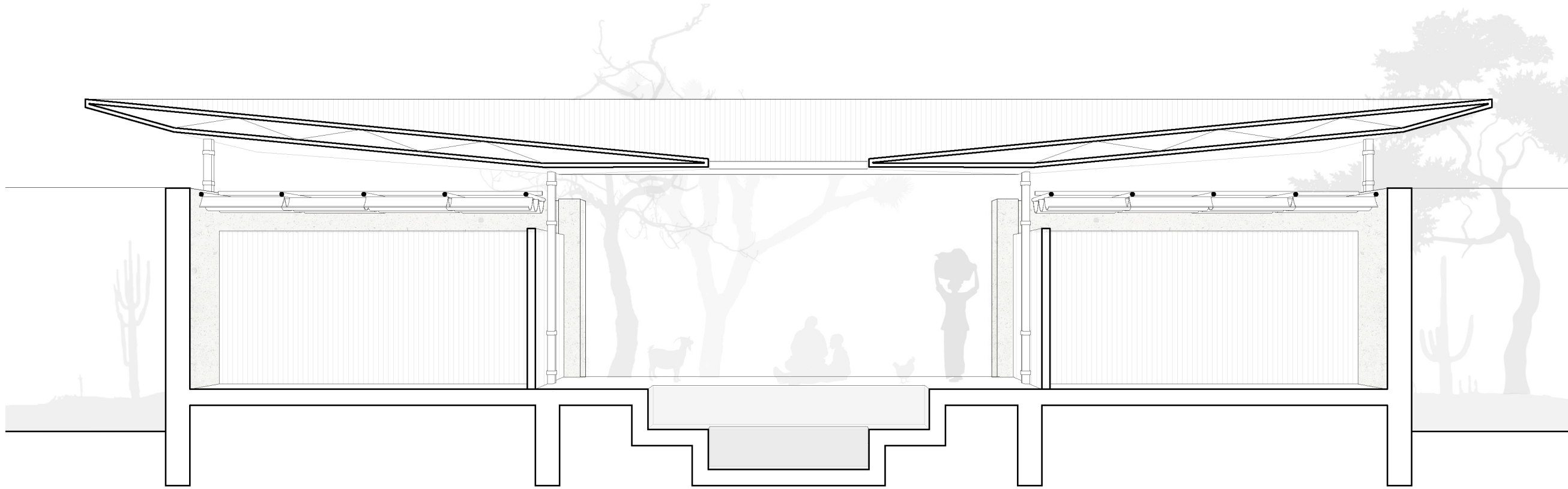
WATER IMPLUVIUM



CROSSED VENTILATION



FENCING SOLUTION



Section A-A \_ Longitudinal 1:50

### Inverted hipped roof

Roof covering: Aluzinc  
Roof structure: metal shaped bars  
Ceiling: bamboo/grass mats (zanna)

### Indoor weaving ceiling

Local wood

### Structure

Wood pillars

### Indoor divisions

Bamboo/grass mats (zanna)

### Impluvium

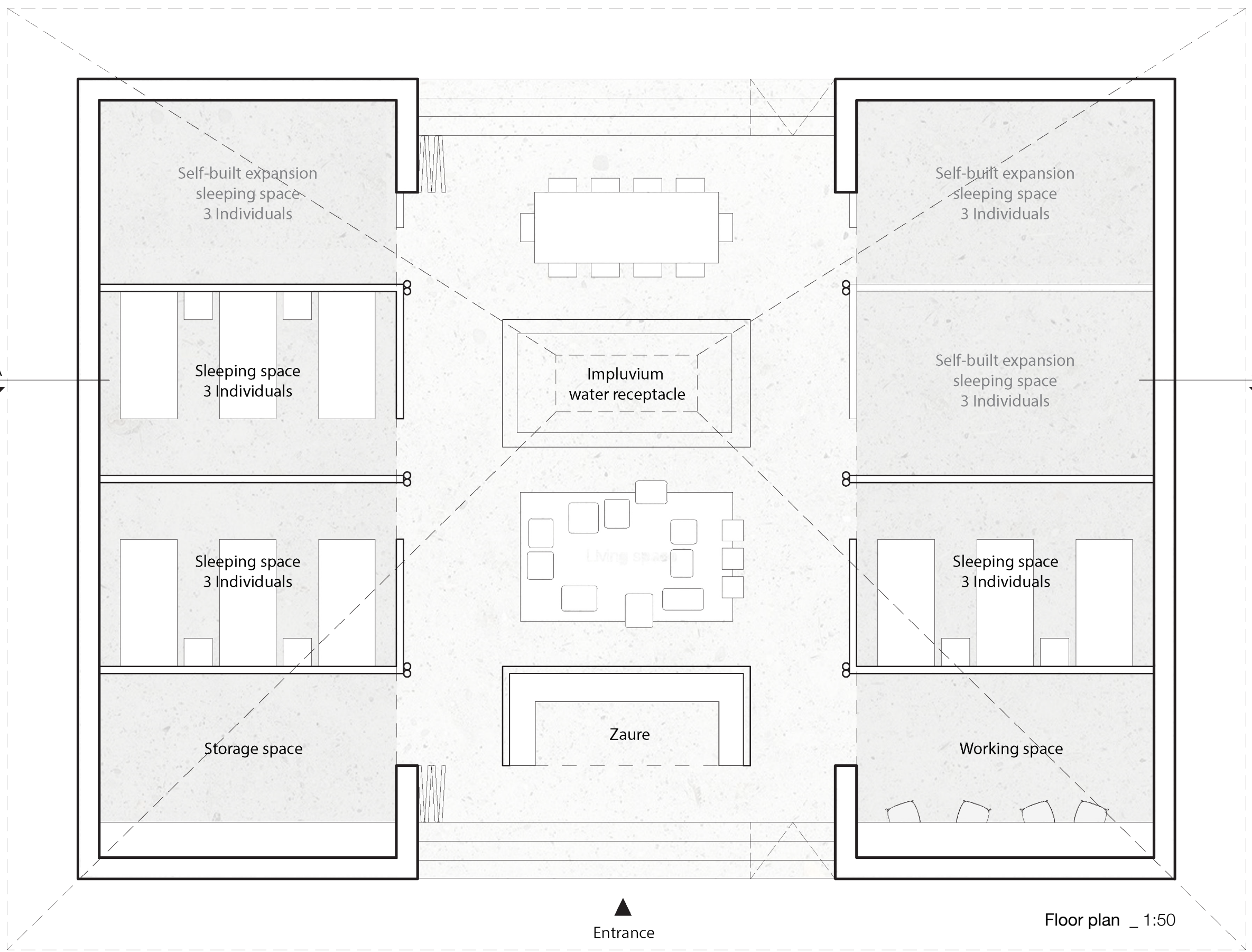
Water receptacle

### Flooring

Sand-cement

### Exterior walls

Mud layers (banibani)



Floor plan \_ 1:50

