



ERA COFFEE LAB

CLEVELAND'S NEWEST
COFFEE EXPERIENCE

ABOUT

Positioned as a "working lab" mixing Cleveland's Industrial with Daytime Deco, ERA emphasizes innovation and quality by offering customers the ability to blend their own coffee at at self-serve Bean Bar and sample using modern equipment.

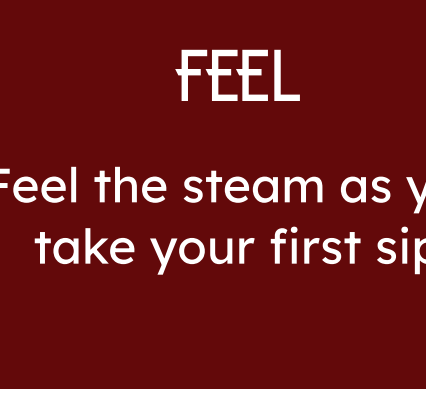
Featuring selections of air and dum roasted beans including experimental flavors sourced from top coffee growing regions. ERA's mission is to serve and experiment with coffee flavors from around the world in a working lab environment.

MOOD



SEE

See the air and drum roasted beans



FEEL

Feel the steam as you take your first sip



LISTEN

Listen to the beans roast and brew



SMELL

Smell the rich and aromatic notes



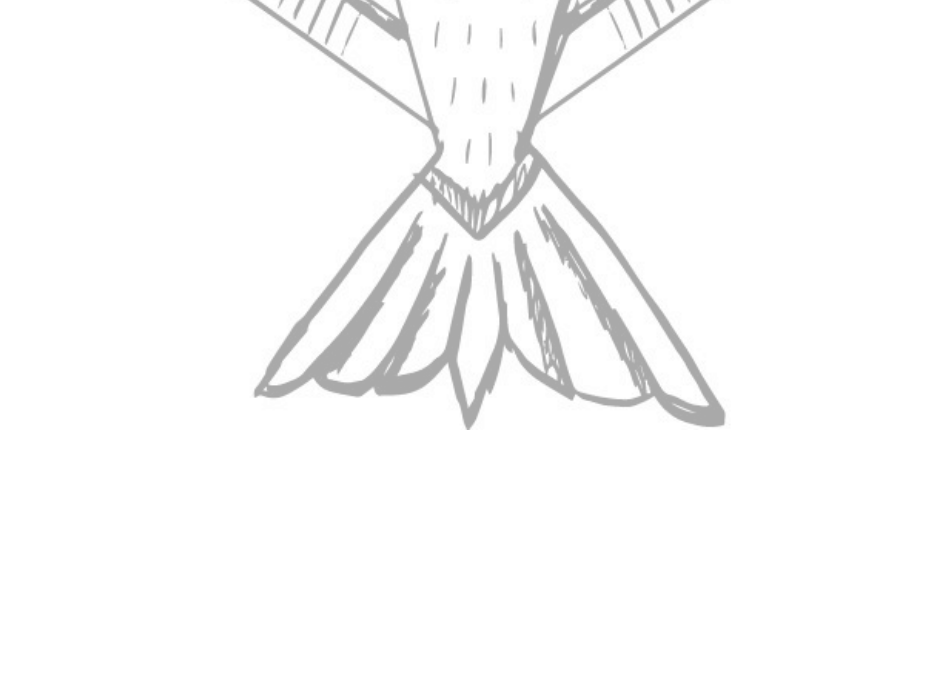
TASTE

Taste the unique batch of beans

ERA COFFEE



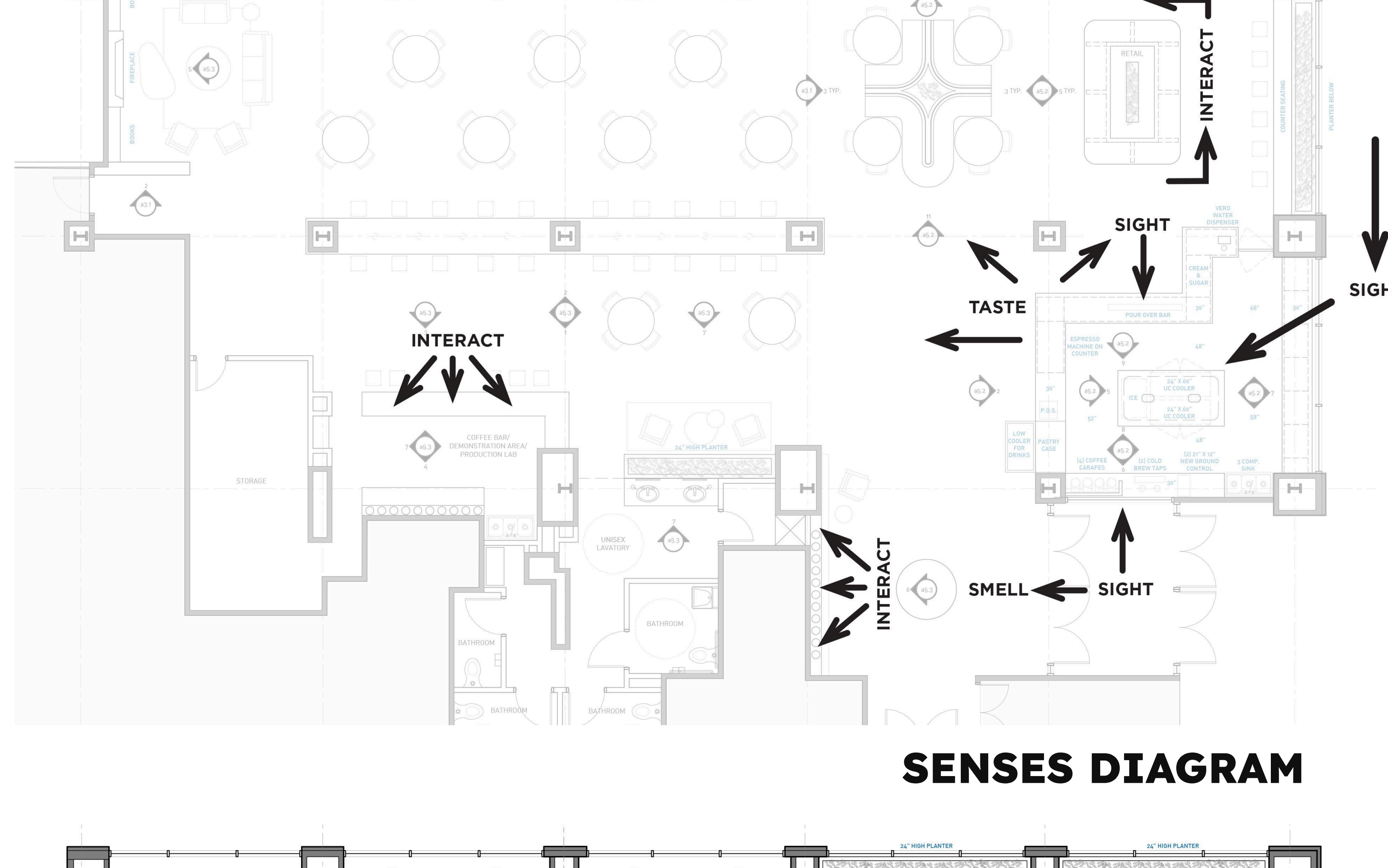
ERA



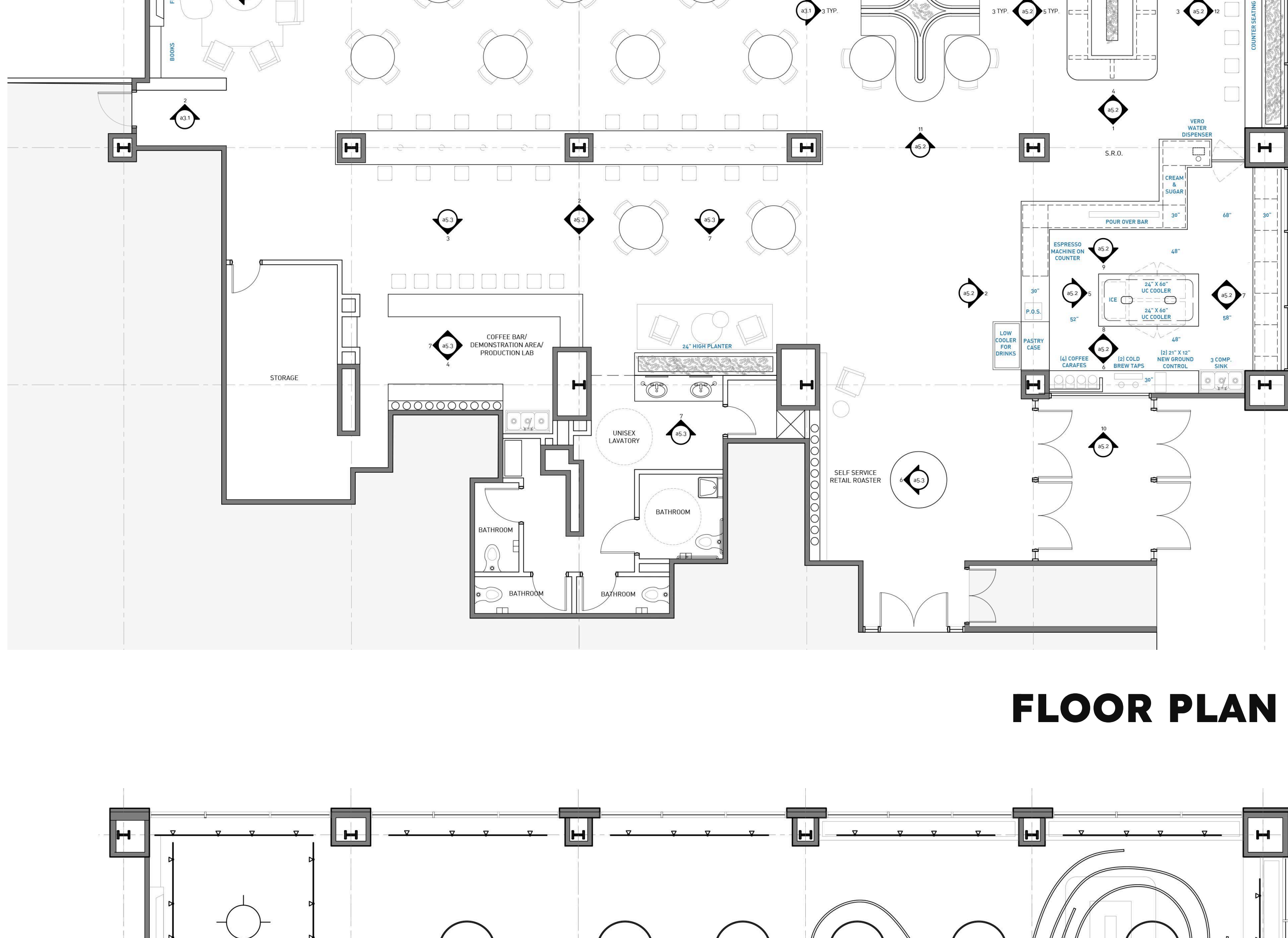
LOGO

ERA
COFFEE LAB

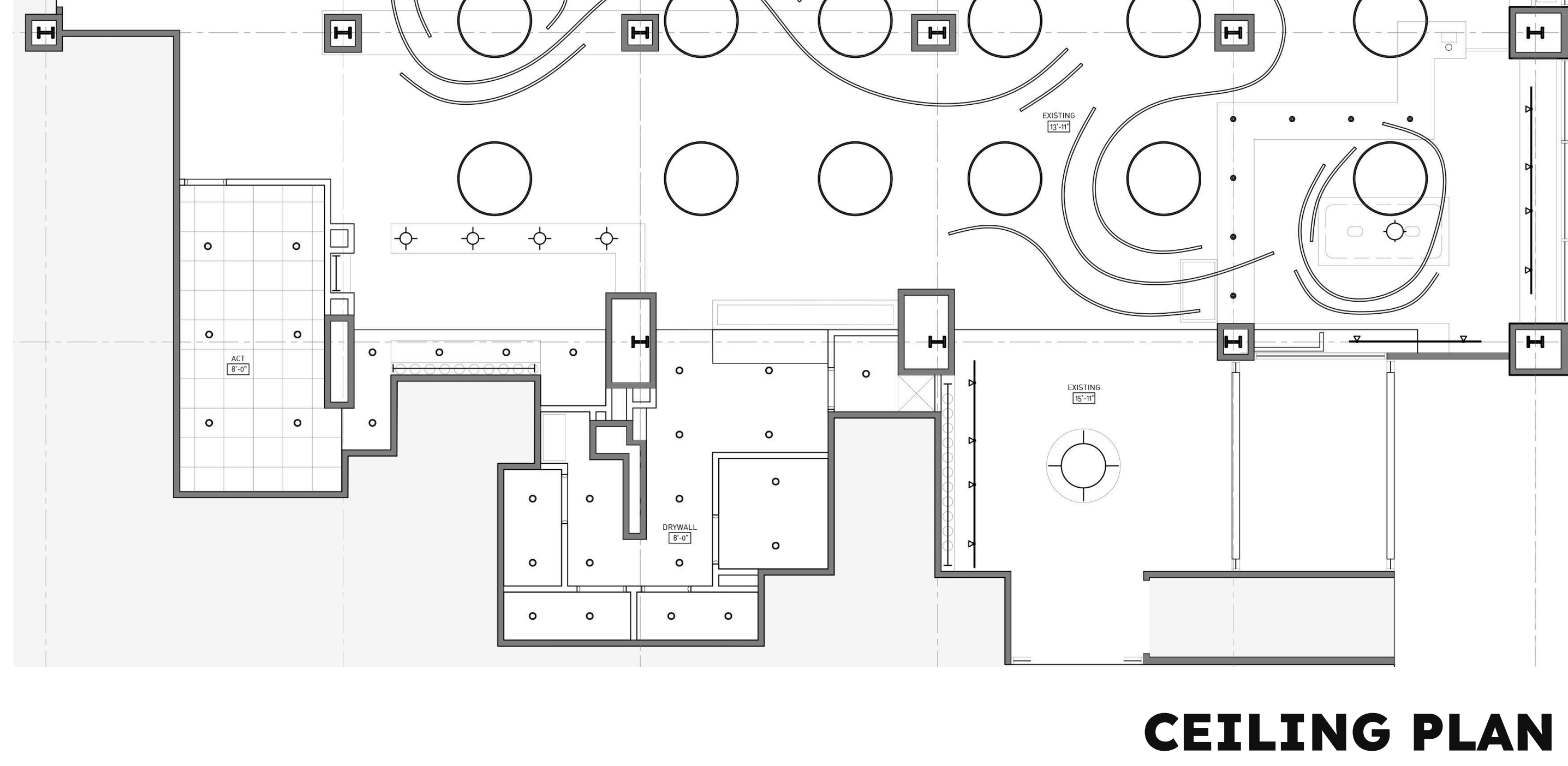
ERA
COFFEE LAB



SENSES DIAGRAM



FLOOR PLAN



CEILING PLAN

"GOOD COFFEE FAST"

A B C D E F G H I J K L M N O P Q R S T U V W X Y Z
% 1 2 3 4 5 6 7 8 9 0 ! & # \$



"CLEVELAND INDUSTRIAL WITH DAYTIME DECO"



THANK YOU FOR VIEWING

TEAM: Curtis Swan, Daniel McLaughlin