

Table of Contents

This is Not A House	3 - 7
The Curtain	8 - 12
SUAY Sew Shop	13 - 14
Ribbon Bathhouse	15 - 16
Personal Work	17

This is Not A House

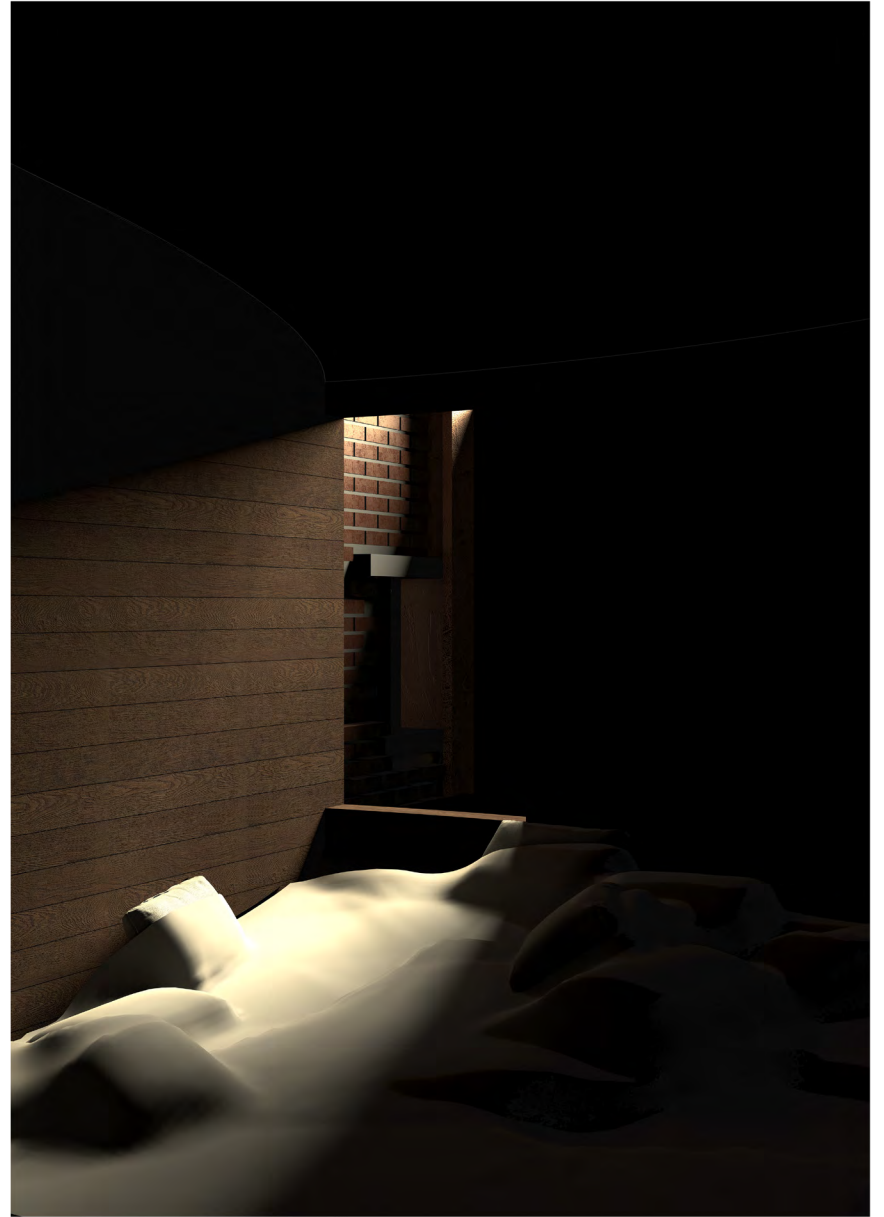
Centro Il Sassu, Arborea,
Sardegna
Spring 2025

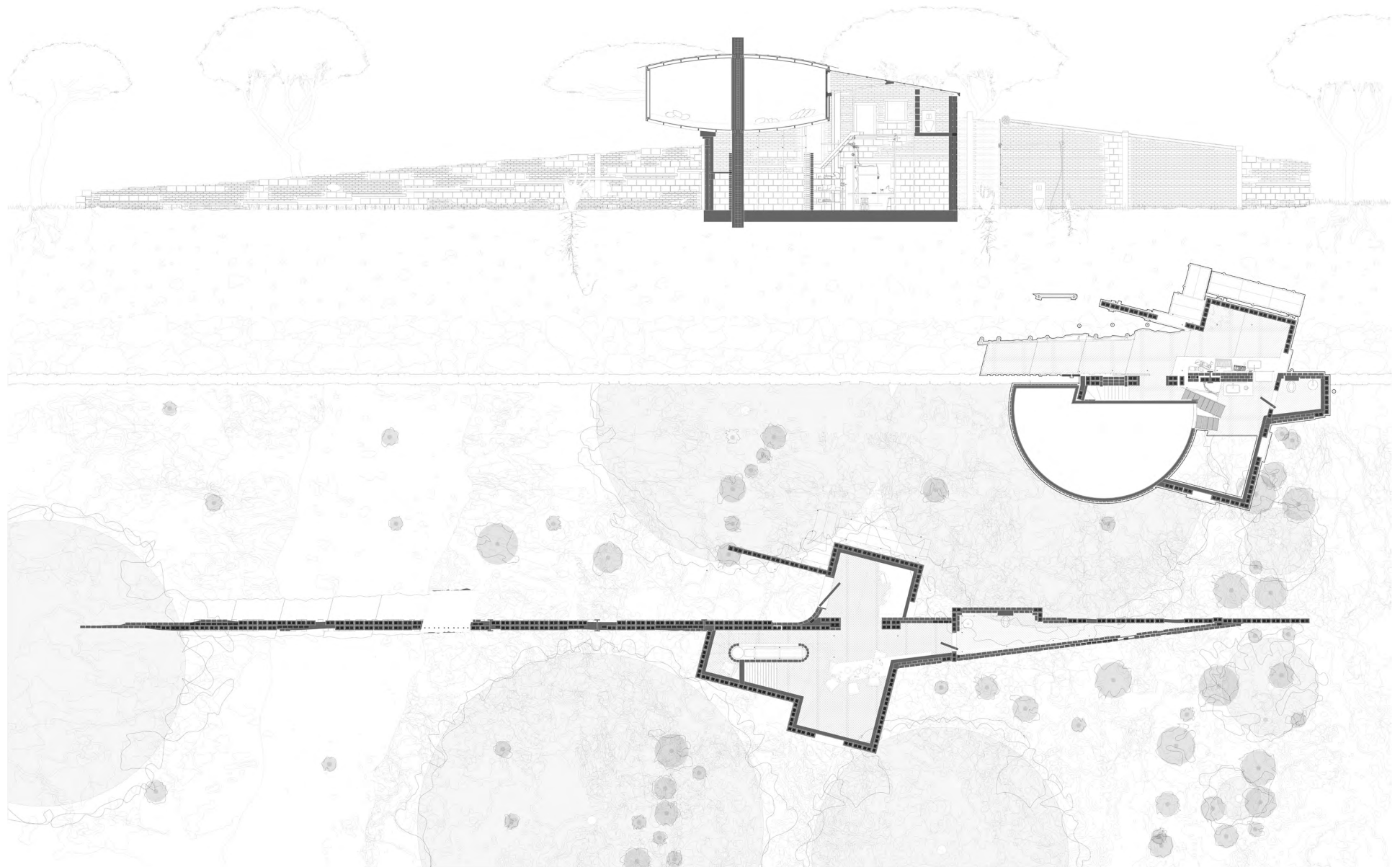
with Sam Wiseman and Samantha Greenberg

On the former colonial agricultural village, Centro Il Sassu, families of the former inhabitants continue living in the blind eye of the government. We decided to exercise the continued use of the site by reclaiming the directors house. This process and proposal attempts to destroy the modern house, the machine for living and reproducing that many still live in today. Introduced initially by Albert Kahn through the open floor plan and Le Corbusier through l'Esprit Nouveau, today the modern house acts as a suppressant of identity and culture. Acknowledging Walter Benjamin's "Destructive Character" this scheme proposes a process of deconstruction and reconstruction. Through deconstruction, a sensibility of the existing materials can be developed for reuse, then reconstruction of a personalized isolated house for its inhabitants outside of the modern machine is possible. Intending to create a familiarity for its residents at a personal level while simultaneously developing an unfamiliarity for everyone else. Pushing to destroy the repetitive program typologies of modernist houses, each program opposes its significant element, that which helps maintain its systematized control. In this case, the focus is the notion of the housewife in the kitchen, privacy in the bathroom, gathering in the living room, and the nuclear family in the bedroom. This is not a house.











The Curtain

Project 1
Syracuse, New York
Fall 2024

Focused on the redevelopment of the urban fabric made possible by the removal of the I-81 viaduct. The Curtain is a housing complex for multi-generational families. It aims to accommodate the needs of a family as grow and change. Each unit houses different states of family. The units allow for flexible program through a series of aggregate fixed systems. They stack and aggregate to create terrace conditions and provide natural lighting for each unit. A corrugated facade drapes over the units connecting the parts to a unified whole.





1"=1/8"

ELEVATION

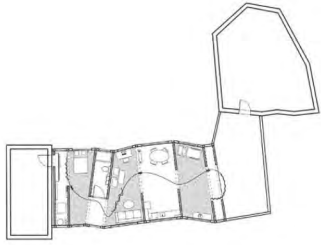




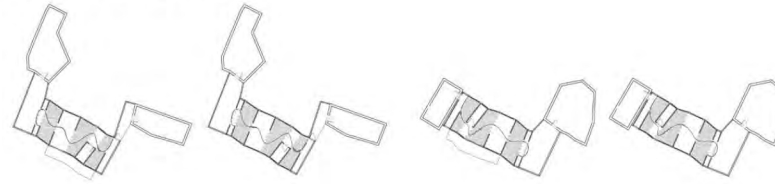
1"= 1/16"

FOURTH LEVEL PLAN

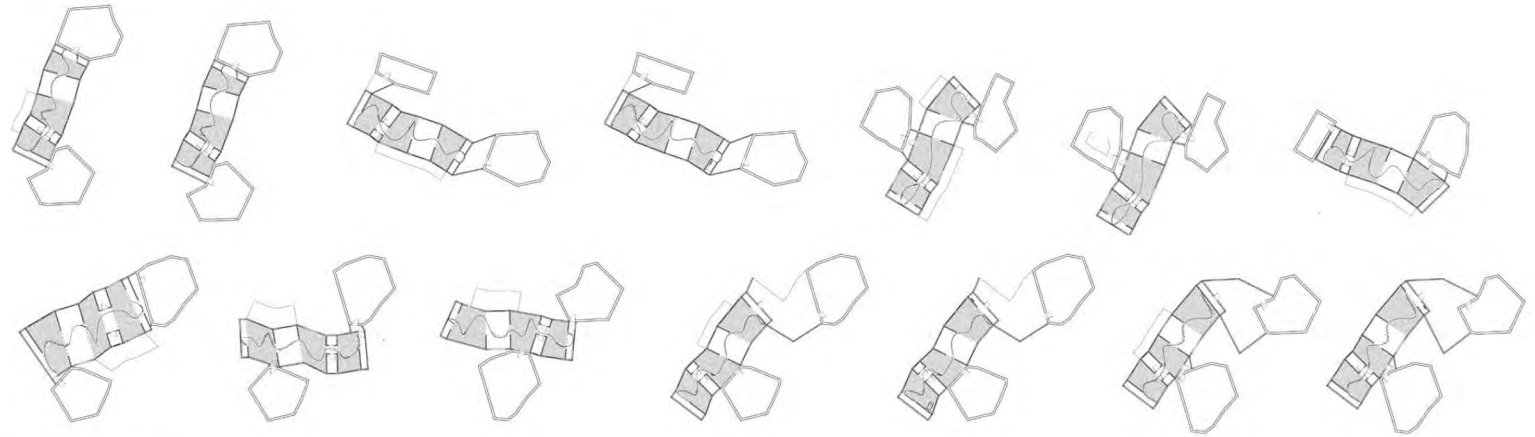




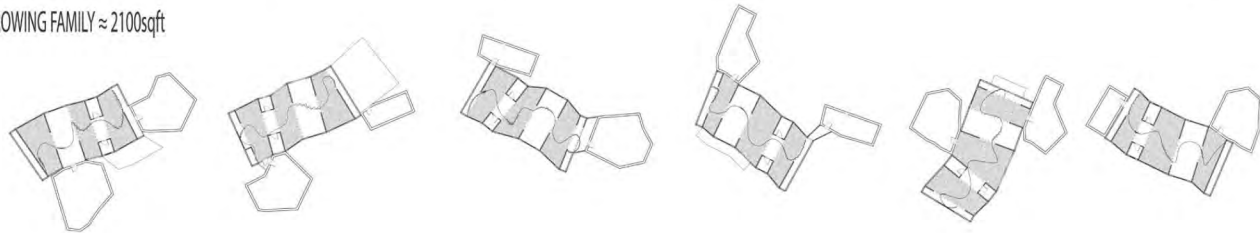
SINGLE LIVING/ NEW FAMILY $\approx 900\text{sqft}$



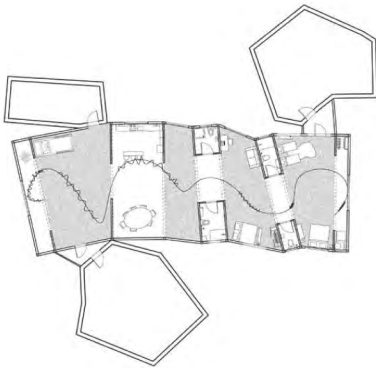
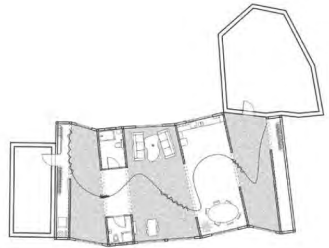
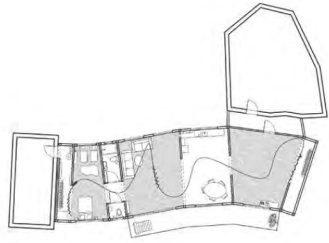
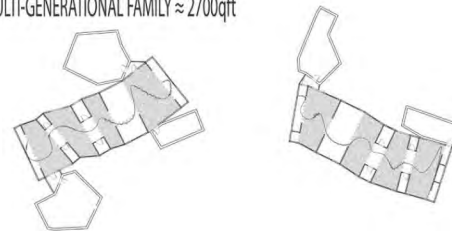
PARTNER LIVING/ BEGINNING FAMILY $\approx 1200\text{sqft}$



GROWING FAMILY $\approx 2100\text{sqft}$



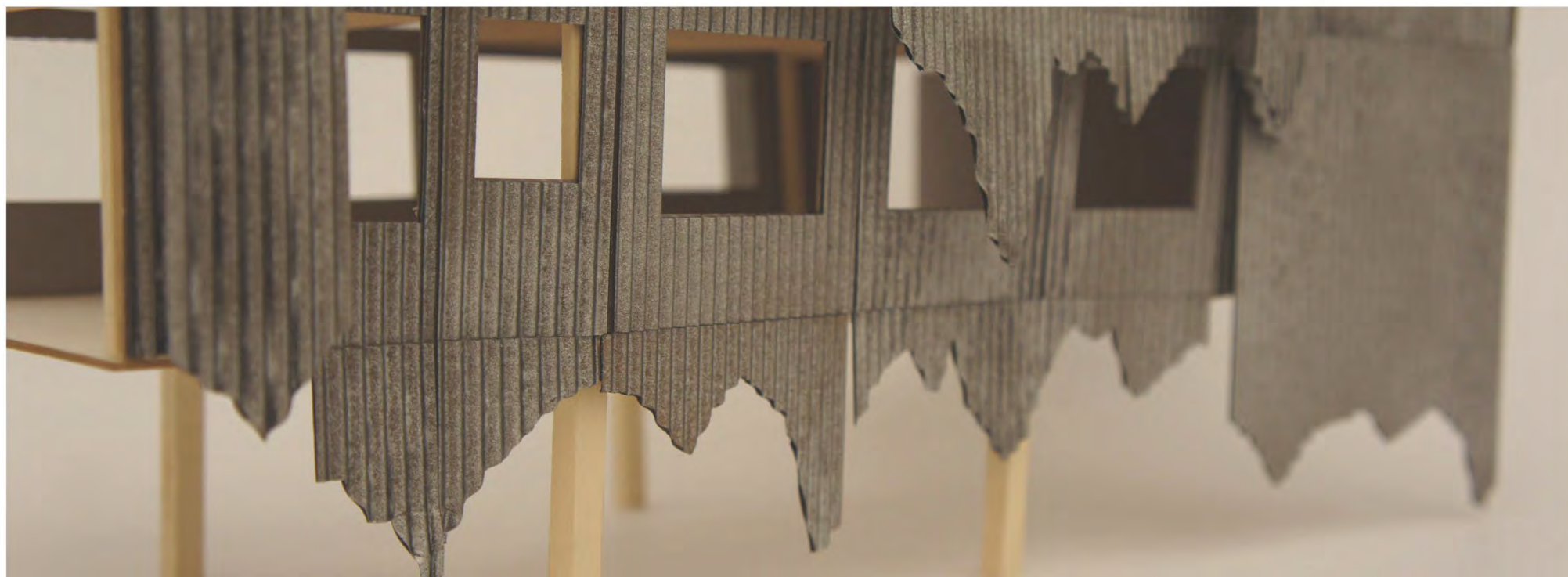
MULTI-GENERATIONAL FAMILY $\approx 2700\text{sqft}$



1" = 1/8"

1" = 1/32"

UNIT PACKAGE



SUAY Sew Shop

Integrated Programs Defined by
Columns and Object Clutters

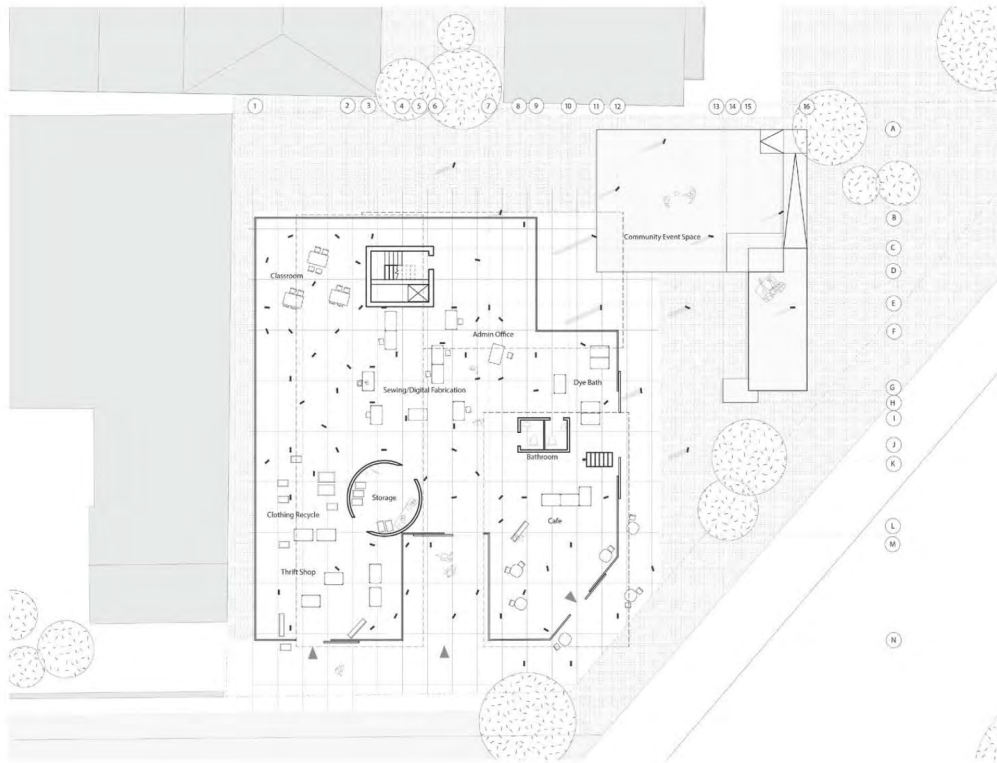
Project 2

Spring 2024

Frogtown, Elysian Valley,
Los Angeles, CA

In this project it was important to approach the building through the lense of the clients, SUAY Sew Shop. SUAY is a bottom up company that looks to bridge the community together through fashion and sustainability. I aimed to produce an open program layout that could be created by the build up of materials and objects within the building. As SUAY grows within the space programs form through the build up of clutters.





Program Taxonomy Diagram
Spatial Overlap
ARC 208: Project 2B_Noah Sadler



Ribbon Bathhouse

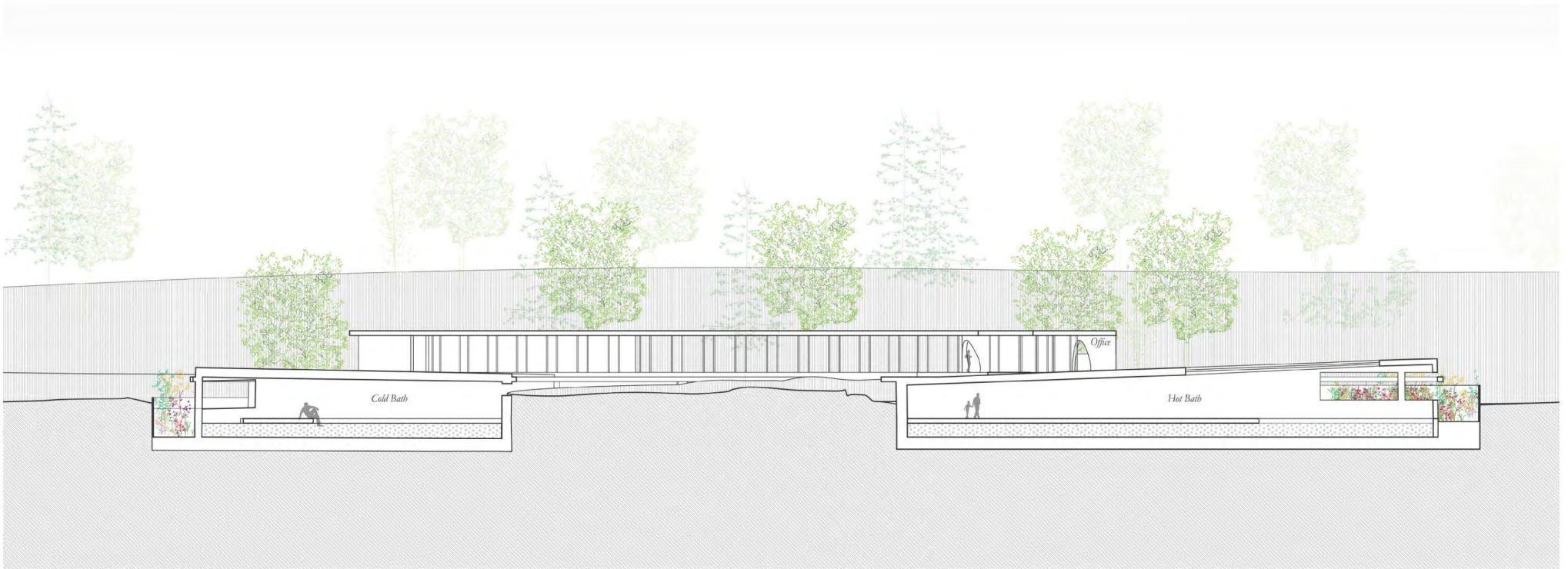
Project 2

Fall 2023

Jamesville Beach Park,
Jamesville, NY

The Ribbon bathhouse bridges the land to the Jamesville reservoir, providing a community space for bathers and visitors looking to enjoy the public beach. The bathhouse derives from the principals of embedding, extruding, and accumulation.





Personal Work

Using methods of drawing, painting, poetry and sculpting. Developing a personal style and formulating thoughts and feelings into art. Improving my technical skill and experimenting with connecting analog and digital medias.



Whiplash, Spring 2024