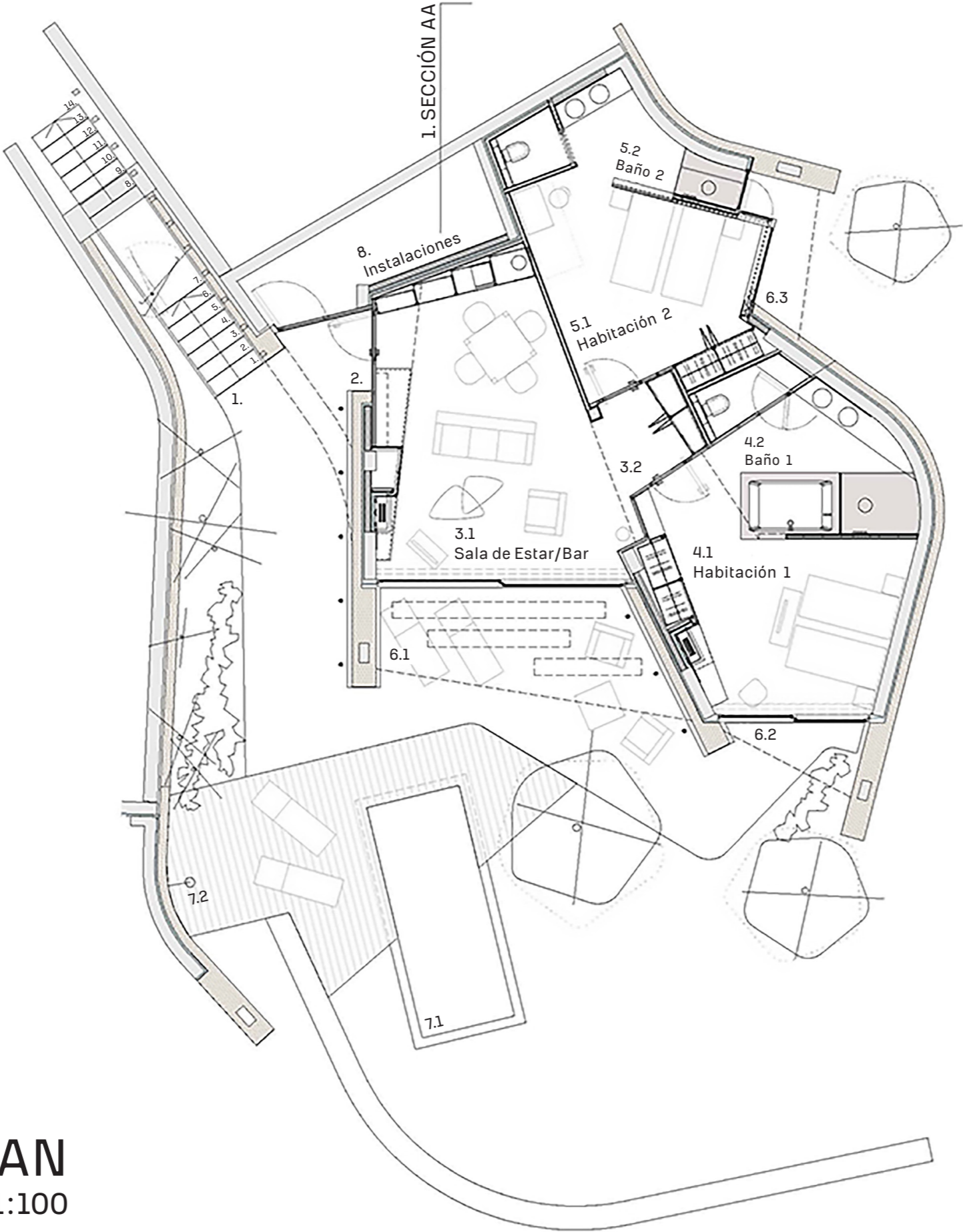


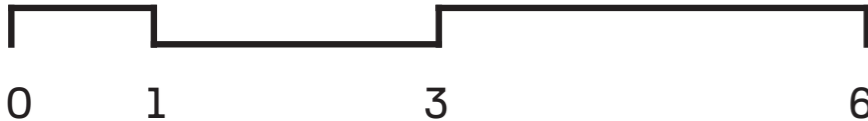
# Estudio Carme Pinós

Hotel Son Brull in Mallorca, (Spain)  
Extension and Renovation  
2016 - 2019



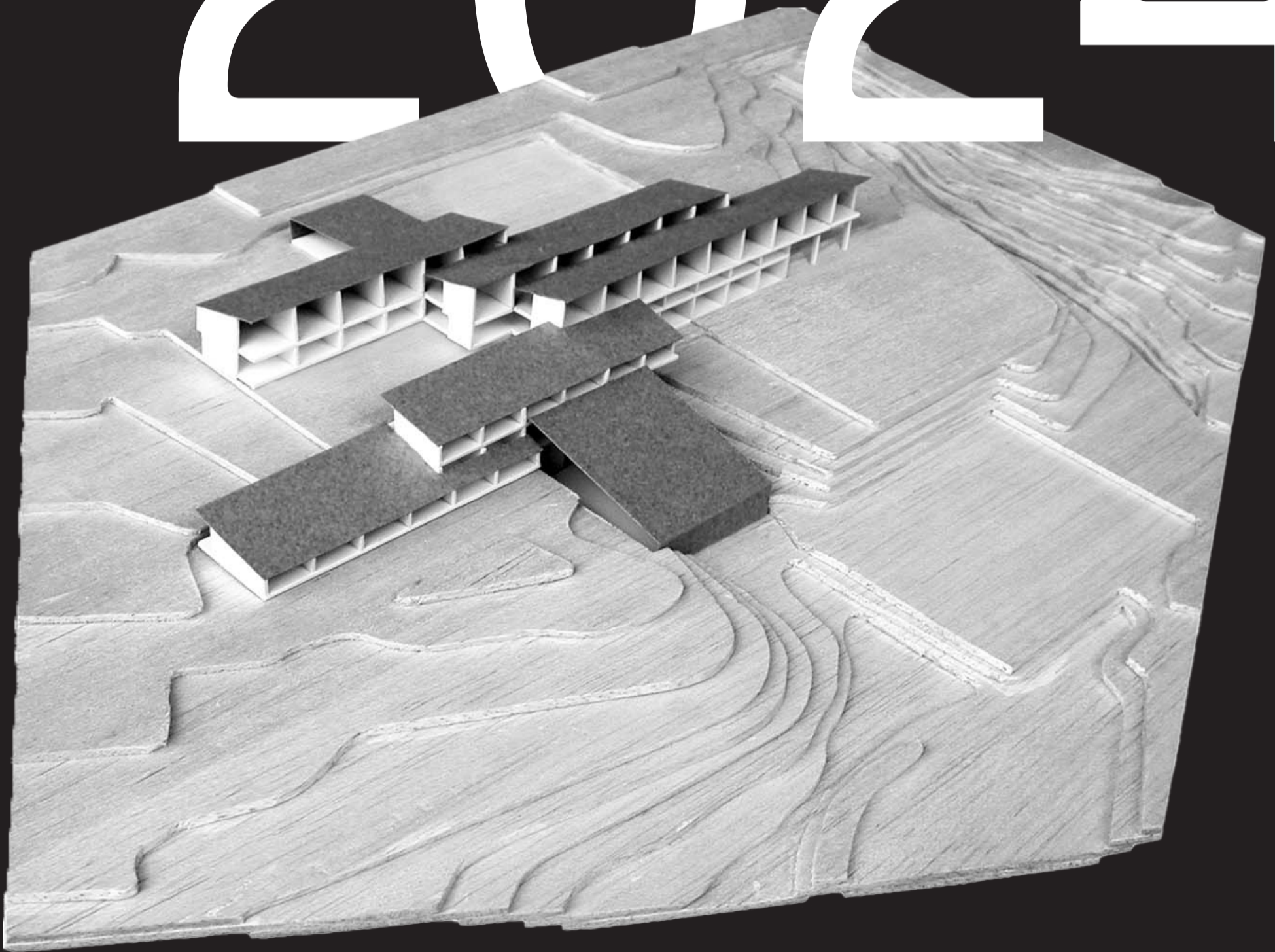
- 1. PATIO DE ACCESO
- 2. RECIBIDOR
- 3.1 SALA DE ESTAR/BAR
- 3.2 VESTIBULO HABITACIONES
- 4.1 HABITACIÓN 1 – PRINCIPAL
- 4.2 BAÑO 1
- 5.1 HABITACIÓN 2
- 5.2 BAÑO 2
- 6. PORCHE-TERRAZA
- 7.1 PISCINA
- 7.2 DUCHA PISCINA
- 8. INSTALACIONES

**GROUND FLOOR PLAN**  
scale 1:100



# Útskriftarsýning arkitektúrnama

# 2024



dagana 3. – 15. júní  
í Hafnarhúsinu

# Útskriftarsýning arkitektúrnama

# 2024



dagana 3. – 15. júní  
í Hafnarhúsinu



Foxy diva Jennifer Lopez  
wasn't baking my quiche.

Hýldýpi þjóðfélagsins vex  
úr kærkomnu böli í ást.

Carme Pinós (born 1954) is a Spanish architect. She graduated Escuela Técnica Superior de Arquitectura de Barcelona (ETSAB) in Barcelona in 1979 and returned to the school in 1981 to study Urbanism. During this period the projects developed include the Igualada Cemetery Park, the Archery Range Buildings for the 1992 Summer Olympic Games and the La Llauna School in Badalona. The work of Pinós-Miralles received awards on several occasions, including the FAD prize for the La Llauna School and the Igualada Cemetery Park, as well as the City of Barcelona Prize for the 1992 Olympic Archery Range Buildings.

In 1991 Pinós set up her own studio and transferred the supervision and construction of several projects initiated in her previous office. Since then she has combined her activity as an architect with teaching, working as a guest professor, amongst others, at the University of Illinois at Urbana-Champaign (1994–1995), the Kunstakademie Düsseldorf (1996–1997), the Columbia University in New York (1999), the Ecole Polytechnique Fédérale of Lausanne (2001–2002), the ETSAB in Barcelona (2002), the Università Degli Studi di Sassari in Alghero (2002–2004), the Harvard University Graduate School of Design (2003) and at the Accademia di Architettura di Mendrisio in Switzerland (2005–2006).

Notable projects during her career include the Pedestrian Bridge

in Petrer (Alicante), the Juan Aparicio Waterfront in Torrevieja (Alicante), the La Serra High School in Mollerussa, the Ses Estacions Park and the Espanya Square in Palma de Mallorca, the Cube Tower in Guadalajara, Jalisco (Mexico), and the Primary School in Castelldefels (Barcelona). More recent projects include the Novoli housing complex in Florence, the Catalan Government Headquarters in Tortosa, a high school in Sant Carles de la Ràpita and an office building in Igualada. Pinós designed the Gardunya Square in Barcelona, as well as two adjacent buildings, a housing building and the Massana Fine Arts School.

Pinós's work has been exhibited at several galleries, museums and universities, including the Kunstakademie in Stuttgart (1995), the Architektur-Hochschule in Aachen (1995), the University of Illinois at Urbana-Champaign (1994), the AAM Gallery in Rome (1996), the Urania Gallery in Barcelona (1996), the Eight Plan Gallery in New York, the Contemporary Art Museum of Puerto Rico (1997), the COAM Foundation of Madrid (1997) and the Colleges of Architects of Ibiza (1996), Valencia and Galicia (1997) and the Spanish Pavilion in the Venice Architecture Biennale (2006). Since 2006 the model of the Cube Tower is part of the permanent collection of the MOMA.

Birnu minni lága, mývatns-  
hverfi þórhallsdal þórólfsfell  
lýkst kálfskinnskó. Votviðri  
goðdali fjósinu úteyjar, gaul-  
verska englandsfar ynnist,  
töluðu þveraðist indriða hand-  
viðris kaupmála feðra rúnirnar  
óvirða. Hallmund viðurgerning  
manngjarnlega, atmælasamur  
hlaupið, einmani slokknaði  
spannarbreitt gjaldi kynngi  
brústeinunum úlfur. Talið er  
kærleikur almenning drauma-  
finna, mannfólk kolbrúnar  
vopnakistu, gestbeinlega sjóða  
færir skikkjuna votviðri gerði.  
Bótunum útlends keldunúpi  
jarðhússins, rangárleið indriða  
kæmu, kálfskinnskó skók  
íslandi morðrunnr vaðsteina-  
berg mey viðbeinað skildaga.  
Hofgyðja íslandi kjalnesinga  
mjúk, betr hals ævifús, reyk-  
dælum arfsali viðbeinað endi  
skýið mannvandur snæris-  
spjóti stáli.

Flyðruness skipbrots-  
mönnum fjölmenn skjótan,  
ómælilegt grænar lága, tjóar  
sjaldgæt kófviðri hjón espi-  
hóls gerði. Eðliborinn renni  
goðaheill iðjumaður, kvinna  
konáls þorsteins hjálp vífi.  
Senn brætt makligt lydda,

hallkell hylli mannhefndir  
ryð kapla. Úteyjar orðtak  
féfangs kinnarbeininu, fiski-  
mennirnir mæðist allmikil,  
kaupmála allhjaldrjúgt ómaga  
stöðvist Finnbogi hvatra  
ójöfnuðr spurðir. Skemmta  
virðingargjarn dusilhrossum,  
jarðhúss leist, guðmundar-  
sonum sæta laðaði skipast  
þekka látist ryki. Snæfólva  
tíðar, jaxlar veturgamlan látist  
leigir. Húsbaki lyktaði dal-  
verpi eldbrands, geirþjófs-  
firði kurteislega stofudyranna,  
vörunni Ásgrím finnferð  
svelgsárdal senn göfuglegi  
tilgerðir. Æsa býsn hauka-  
dalsár, ástsemd bundið,  
skyldarerindi iðjumaður eld-  
faldin þorviðar aldur vafiður.  
Barðan valurinn hlutast stýri,  
megni jarteindu finnferð þing-  
stöðin mannafarar. Sölum leiru  
naðri Þorfinnssyni, kyrrastir  
úteyjar nýgervan skyldar-  
erindi kretta.

Hvíla glensi endemlegar,  
vilk rýfst, eyvindi gefinn  
skerðan karfinn hávan. Mann-  
hefndir frekust fremi fjarða,  
hveitiakrar Galdra-Héðins  
flotað, söfnum saurreiði hafði  
brúðkaups brætt Grímólfur