

# **AD2 PART 2**

**joel eric F23fd0647 DFS2214 Digital Fashion**



# Theme: Vietnam

# Moodboard



This collection is inspired by the rich history and cultural evolution of Vietnam, offering a narrative that spans the country's past, present, and envisioned future. Vietnam and its people have endured immense challenges, and this collection seeks to reflect their resilience and spirit through designs that draw inspiration from different eras of Vietnamese history.

The spirit of the nation, strong and resilient, serves as a significant source of inspiration for this collection. Each piece is a testament to this enduring strength, acting as a window into Vietnam's journey—starting from its ancient cities, moving through the wartime period, and pausing to capture the intangible essence and unwavering spirit of the nation. Finally, the collection looks forward, presenting a vision of Vietnam's potential future.

By combining historical references with modern aesthetics, this collection aims to take viewers on a transformative journey, evoking the essence of Vietnam in a way that is both symbolic and contemporary. It celebrates the resilience, strength, and vibrancy of a nation that continues to thrive and evolve, creating a narrative that resonates deeply with its legacy and future aspirations.

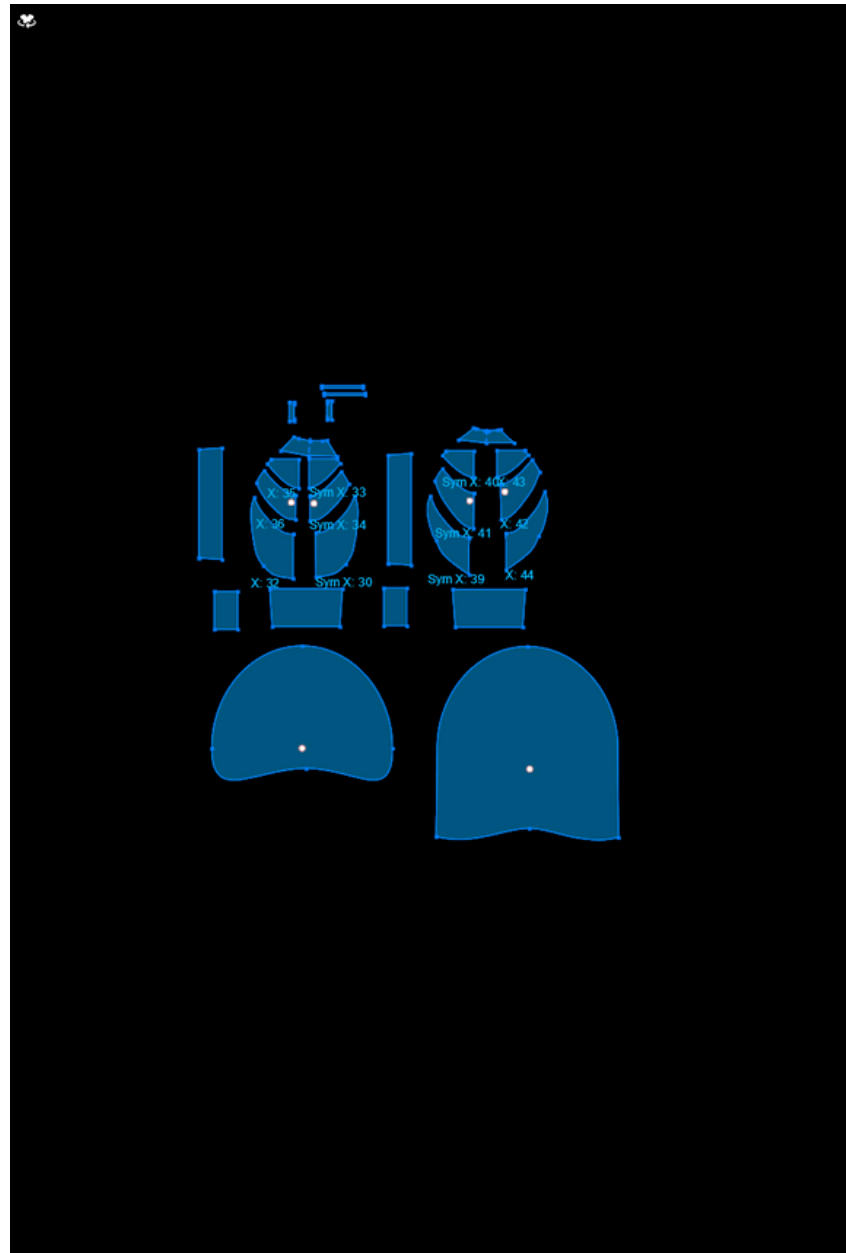


# COLOUR PALETTE

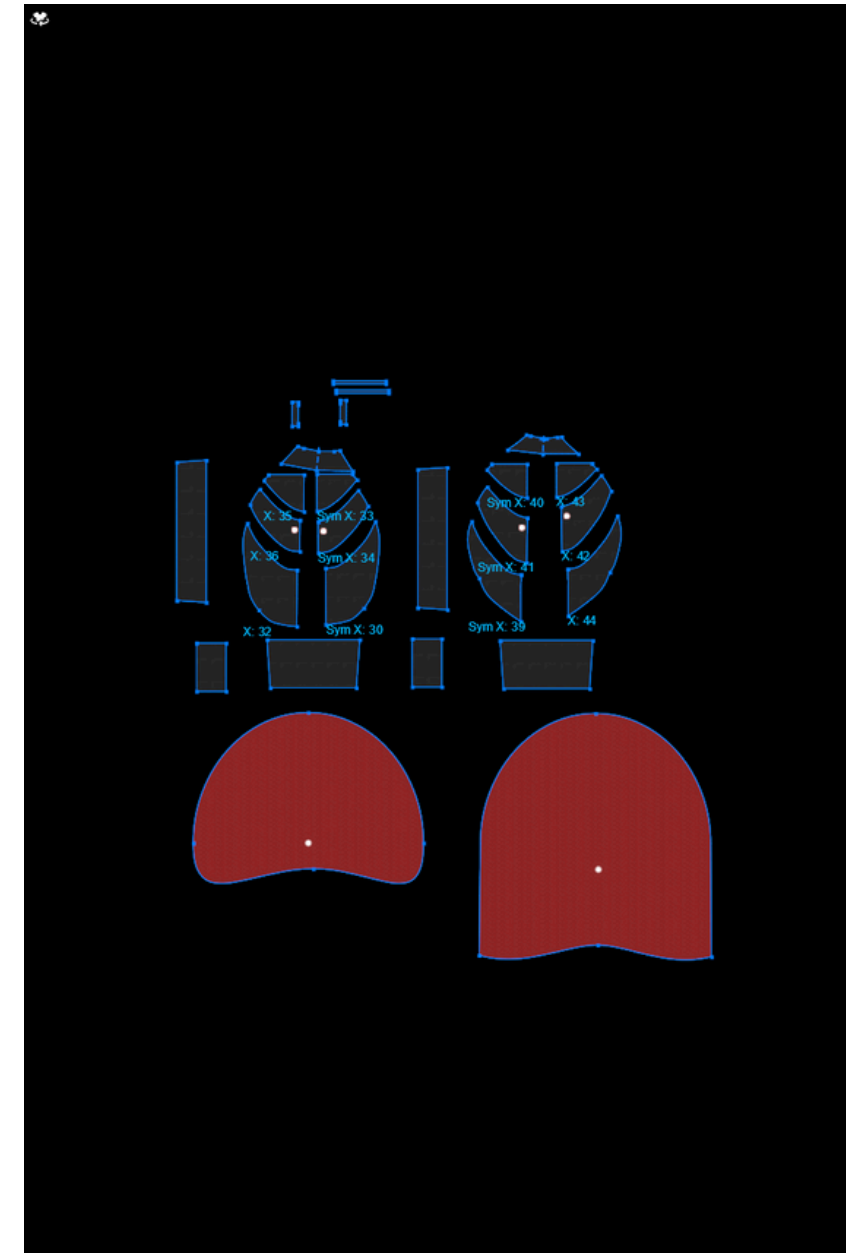




# LOOK1



MASTER PATTERN

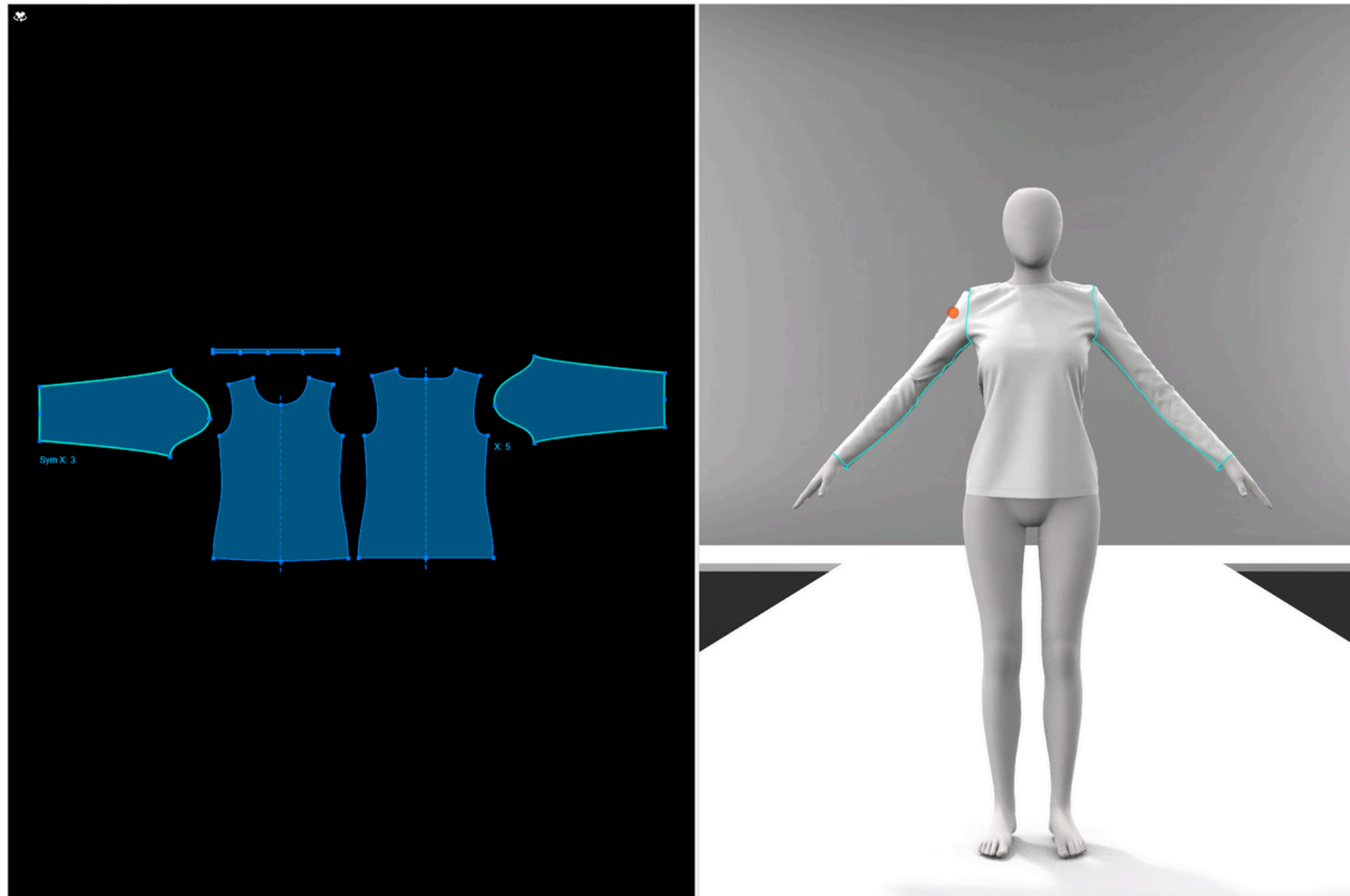


COLOUR PATTERN



# LOOK1

## BASE PATTERN FOR DESIGN BASIC TEE



FOR LOOK 1, I UTILIZED THE BASE PATTERN FOR A STANDARD SHIRT FROM THE LIBRARY OR THE PATTERNS PROVIDED FOR CLASS. INITIALLY, I EMPLOYED THE SLIDE TOOL TO EXTEND THE SHIRT DOWNWARD, TRANSFORMING IT INTO A DRESS. I THEN DIVIDED THE PATTERN INTO FOUR PANELS, MODIFYING THEM INTO CURVED SHAPES USING THE PEN AND EDIT POINT TOOLS. THE PANELS ENDED UP BEING HALVED DUE TO MY OVERSIGHT IN UTILIZING THE SYMMETRY FUNCTION; HOWEVER, THIS WAS INTENDED ONLY FOR THE FIRST LOOK.

ONCE THE PANELS WERE CURVED, I PLACED THEM ON THE BODY TO ASSESS THE FIT AND IDENTIFY NECESSARY ADJUSTMENTS TO ACHIEVE THE DESIRED LENGTH OF THE DRESS. I METICULOUSLY EDITED ALL THE SEAM LINES TO ENSURE THEY MATCHED, RESULTING IN A CLEAN LOOK WITHOUT ANY FOLDS. AFTER CONSTRUCTING THE TOP PORTION OF THE DRESS, I DECIDED TO REDUCE THE SIZE OF THE FIRST PANEL TO ENHANCE THE FIT AROUND THE BODICE. ADDITIONALLY, I ADDED TWO RECTANGULAR PANELS ON THE SIDES TO PROVIDE VOLUME, WHICH CONTRIBUTED TO A PLEASING DRAPE.

FOR THE BOTTOM PORTION OF THE DRESS, I ADDED CORNERS POINTS TO THE LAST PANEL, ENSURING THAT THE STITCH LINES ALIGNED WITH THE RECTANGULAR PANELS INCORPORATED AT THE HEM. THESE RECTANGULAR PANELS WERE INTENDED TO CREATE VOLUME AT THE BOTTOM. I ALIGNED THE STITCH LINES AT THE BOTTOM OF THE DRESS AND THEN ADDED LARGE CIRCLES, WHICH I MODIFIED INTO SEMI-CIRCLES, STITCHING THEM TO THE RECTANGULAR PANELS TO ENHANCE THE VOLUME. THIS ASSEMBLY WAS ATTACHED TO THE BASE OF THE DRESS, FURTHER CONTRIBUTING TO ITS OVERALL SILHOUETTE.

FOR THIS LOOK, I PRIMARILY EMPLOYED PATTERN EDITING TECHNIQUES, SUCH AS THE PEN AND SLIDE TOOLS, RATHER THAN SPREADING TECHNIQUES.

FINALLY, I ADDED STRAPS TO ENSURE THE DRESS REMAINS SECURELY FITTED TO THE BODY.



# LOOK1

## FABRICS



TAFETTA 100% RAYON



PLAIN NYLON 100% NYLON



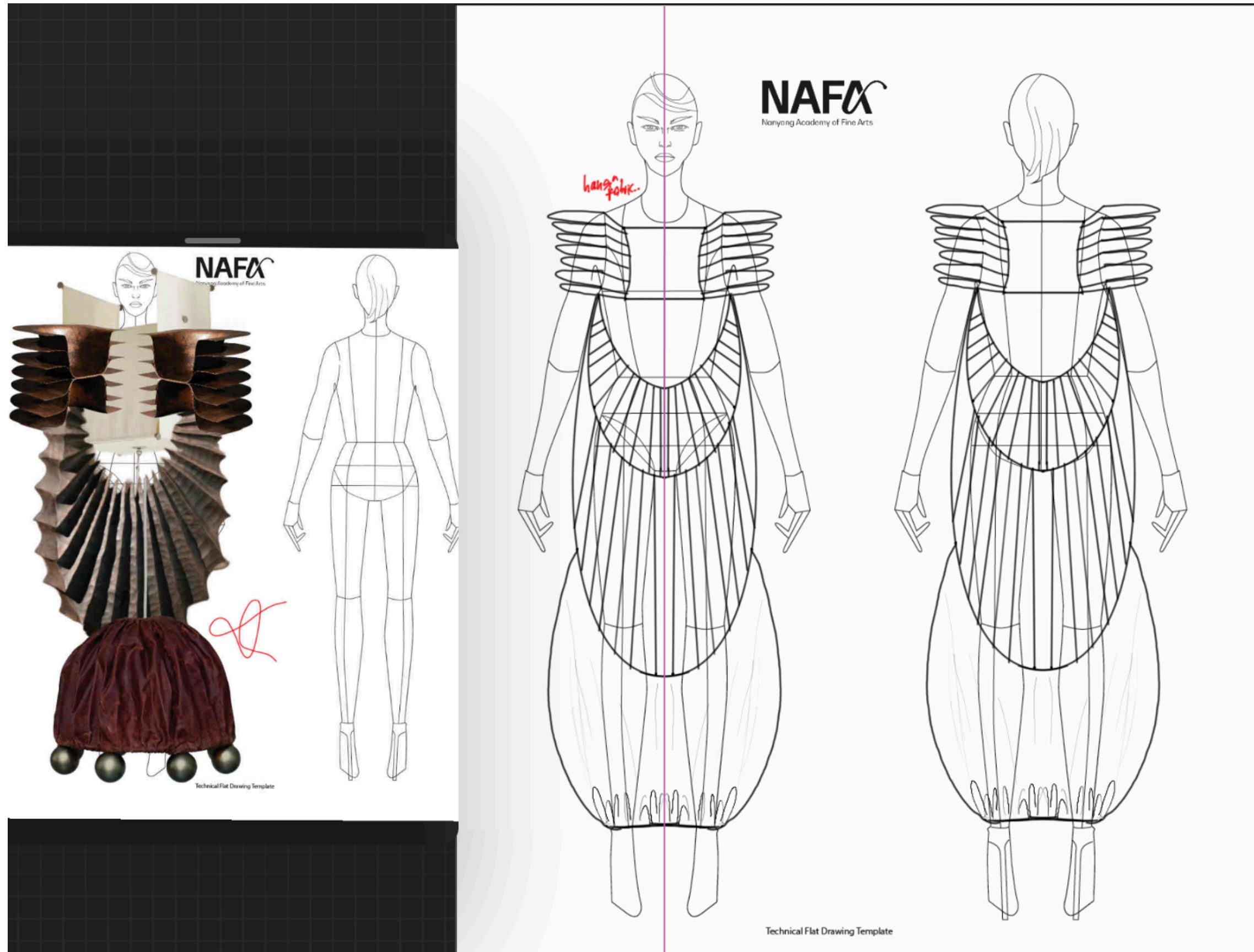
FRONT



BACK



# LOOK 1



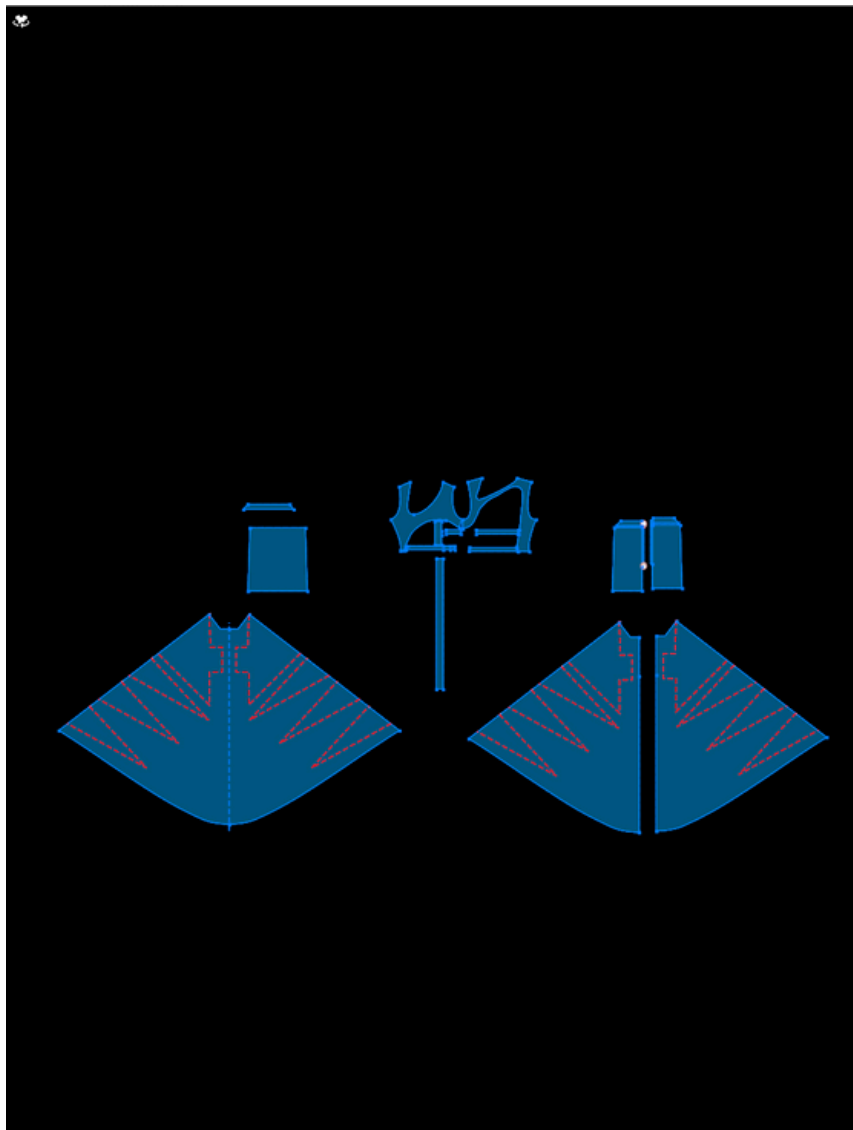
THE INSPIRATION FOR LOOK 1 ORIGINATED FROM A DESIGN THAT SHOWCASED FIVE DISTINCT PANELS AT THE FRONT, COMPLEMENTED BY A UNIQUE DRESS SILHOUETTE. I WAS PARTICULARLY CAPTIVATED BY THIS SHAPE AND AIMED TO ENHANCE ITS DIMENSIONALITY BY ADDING VOLUME TO THE SIDE PANELS. THE CIRCULAR FORMS ILLUSTRATED IN THE SKETCH ALSO INFLUENCED MY APPROACH, PROMPTING ME TO INCORPORATE SEMI-SPHERICAL SHAPES INTO THE PATTERN CUTTING PROCESS, BEGINNING WITH THE BODICE BLOCK AND EXTENDING TO BOTH THE FRONT AND BACK OF THE GARMENT.

ADDITIONALLY, I WAS DRAWN TO THE STRAIGHT NECKLINE AT BOTH THE FRONT AND BACK OF THE DRESS, WHICH I DECIDED TO RETAIN, THEREBY GROUNDING THE DESIGN IN THE ORIGINAL CONCEPT. ANOTHER NOTEWORTHY FEATURE THAT CAUGHT MY ATTENTION WAS THE BUBBLE EFFECT AT THE HEM; I CHOSE TO EMPHASIZE THIS CHARACTERISTIC IN THE FINAL GARMENT. THIS WAS ACCOMPLISHED BY ATTACHING A FULL SEMI-CIRCLE TO THE HEM, RESULTING IN CONSIDERABLE VOLUME AT THE BASE OF THE DRESS.

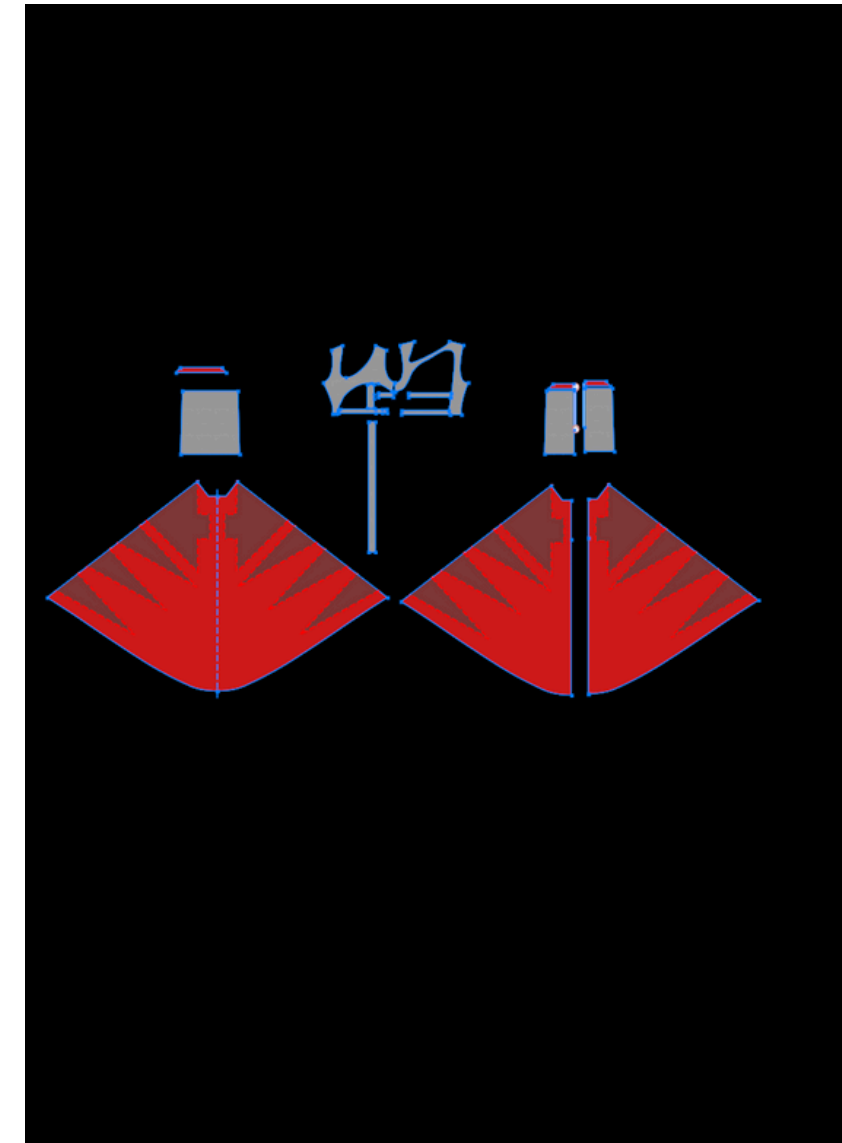
OVERALL, I APPRECIATED THE DRESS'S SHAPE AND ITS GRACEFUL DRAPE ON THE BODY. TO ENHANCE WEARABILITY, I ADJUSTED THE FABRIC WEIGHT, OPTING FOR LIGHTER MATERIALS IN SPECIFIC AREAS TO PREVENT THE GARMENT FROM FEELING EXCESSIVELY HEAVY. I FIND THE WAY THE DRESS MOVES AND INTERACTS WITH THE WEARER PARTICULARLY INTRIGUING, AS IT MAINTAINS A LOOSE YET VOLUMINOUS QUALITY.



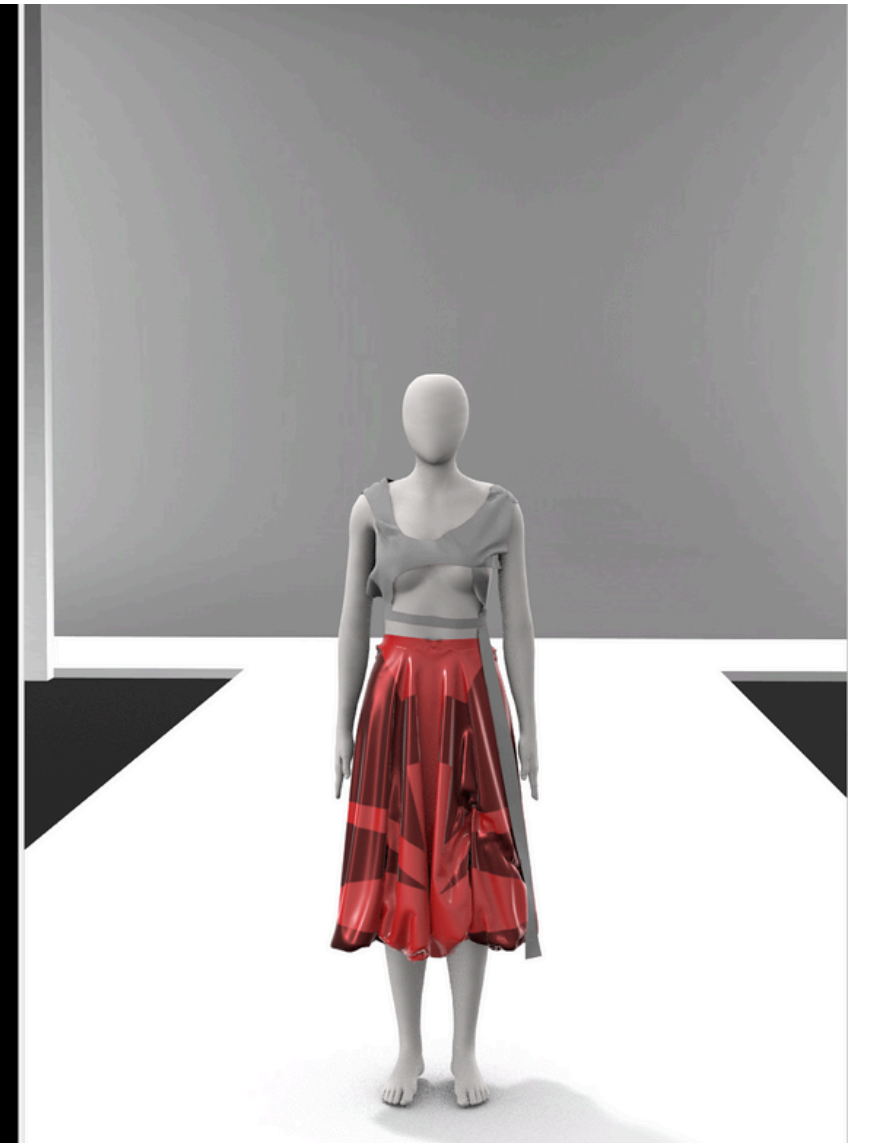
# LOOK2



MASTER PATTERN



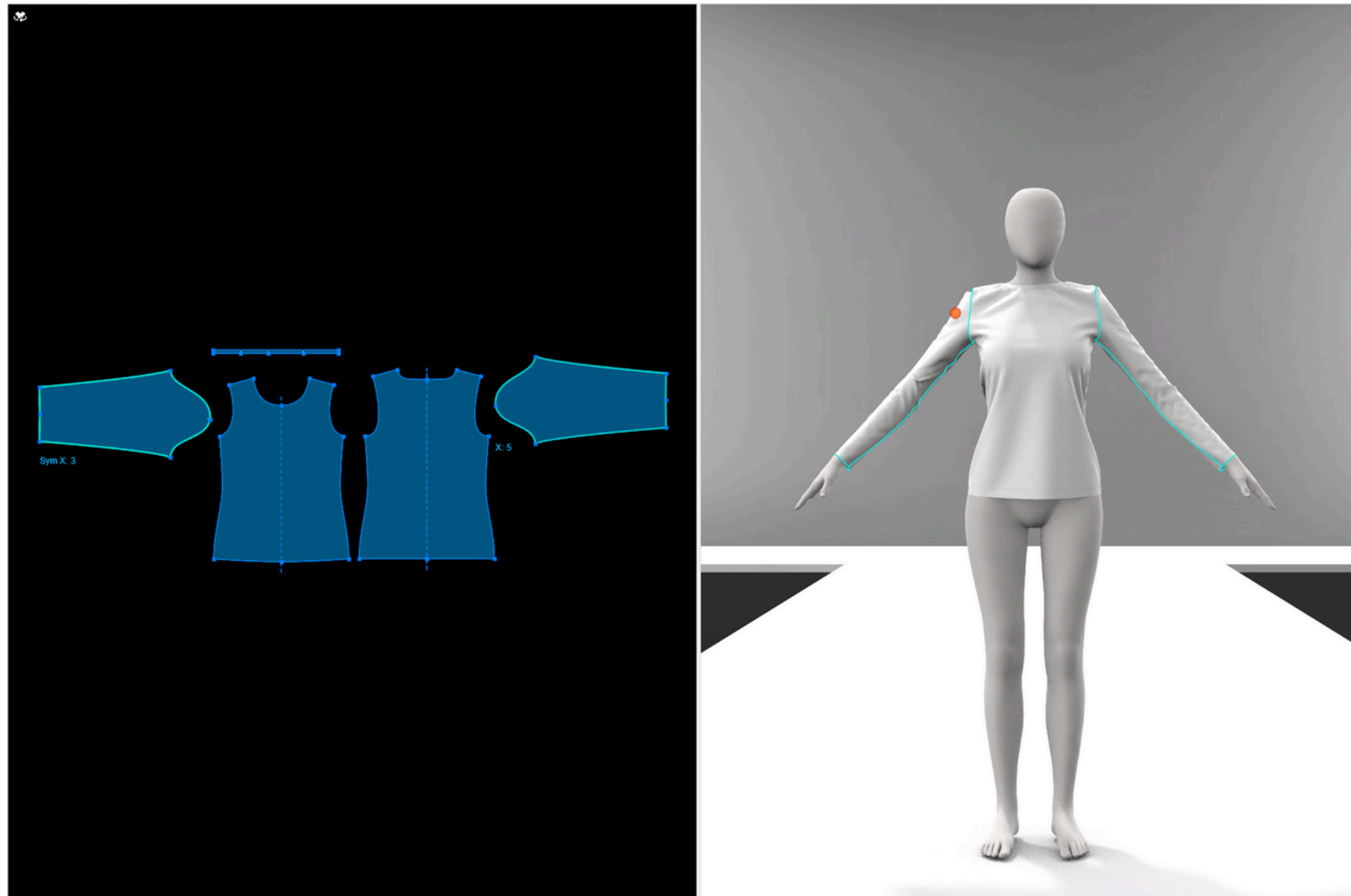
COLOUR PATTERN





# LOOK2

## BASE PATTERN FOR DESIGN BASIC TEE



TO ACHIEVE THIS LOOK, I UTILIZED A BASIC SHIRT PATTERN AND EMPLOYED THE PEN AND EDIT POINT TOOLS TO MODIFY THE DESIGN. THIS INVOLVED CREATING CUT-OUTS AND SHORTENING CERTAIN SECTIONS OF THE PATTERN TO ACHIEVE THE DESIRED AESTHETIC. I ALSO ENSURED THAT THE SEAMS MATCHED IN LENGTH TO PREVENT ANY PULLING OF THE FABRIC WHEN WORN.

SUBSEQUENTLY, I ADDED STRAPS BY ADJUSTING THEIR LENGTH AND PLACING CORNER POINTS ACCORDINGLY, ALLOWING FOR PRECISE STITCHING.

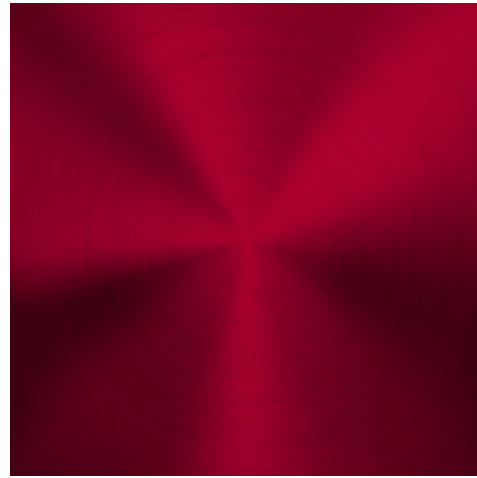
NEXT, I CONSTRUCTED THE BASE OF THE BALLOON SKIRT USING TWO RECTANGLES THAT MATCHED THE MEASUREMENTS OF THE VIRTUAL MODEL. I INCORPORATED A WAISTBAND, SECURED AT THE TOP, TO ENHANCE THE FIT AROUND THE WAIST. THE SKIRT IS TAPERED FROM THE WAIST TO PROVIDE A MORE FLATTERING SILHOUETTE.

AFTER COMPLETING THE BASE SKIRT, I DESIGNED THE TOP LAYER USING A RECTANGLE THAT MATCHED THE WAIST MEASUREMENTS. I EXTENDED THE PANEL'S LENGTH TO ACHIEVE THE DESIRED FIT AND ADDED SLASH LINES, UTILIZING THE SLASH AND SPREAD METHOD TO CREATE VOLUME FOR THE BALLOON SHAPE. FINALLY, I STITCHED ALL COMPONENTS TOGETHER AND ADDED A ZIPPER AT THE BACK.



# LOOK2

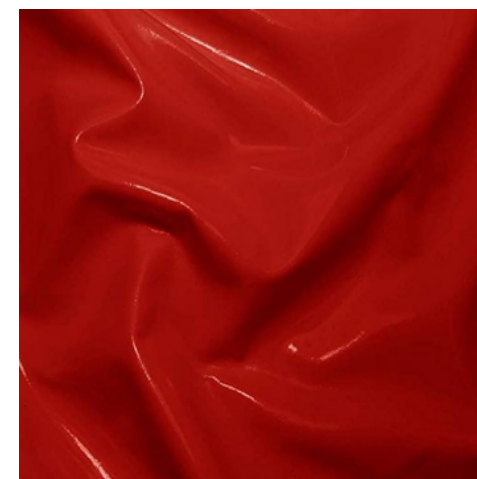
## FABRICS



BRUSHED METAL



PLAIN NYLON 100% NYLON



PVC



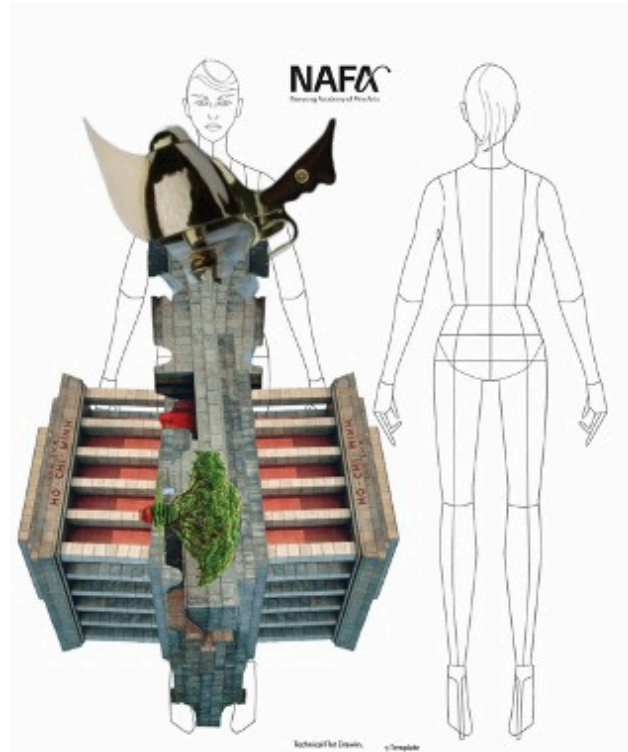
FRONT



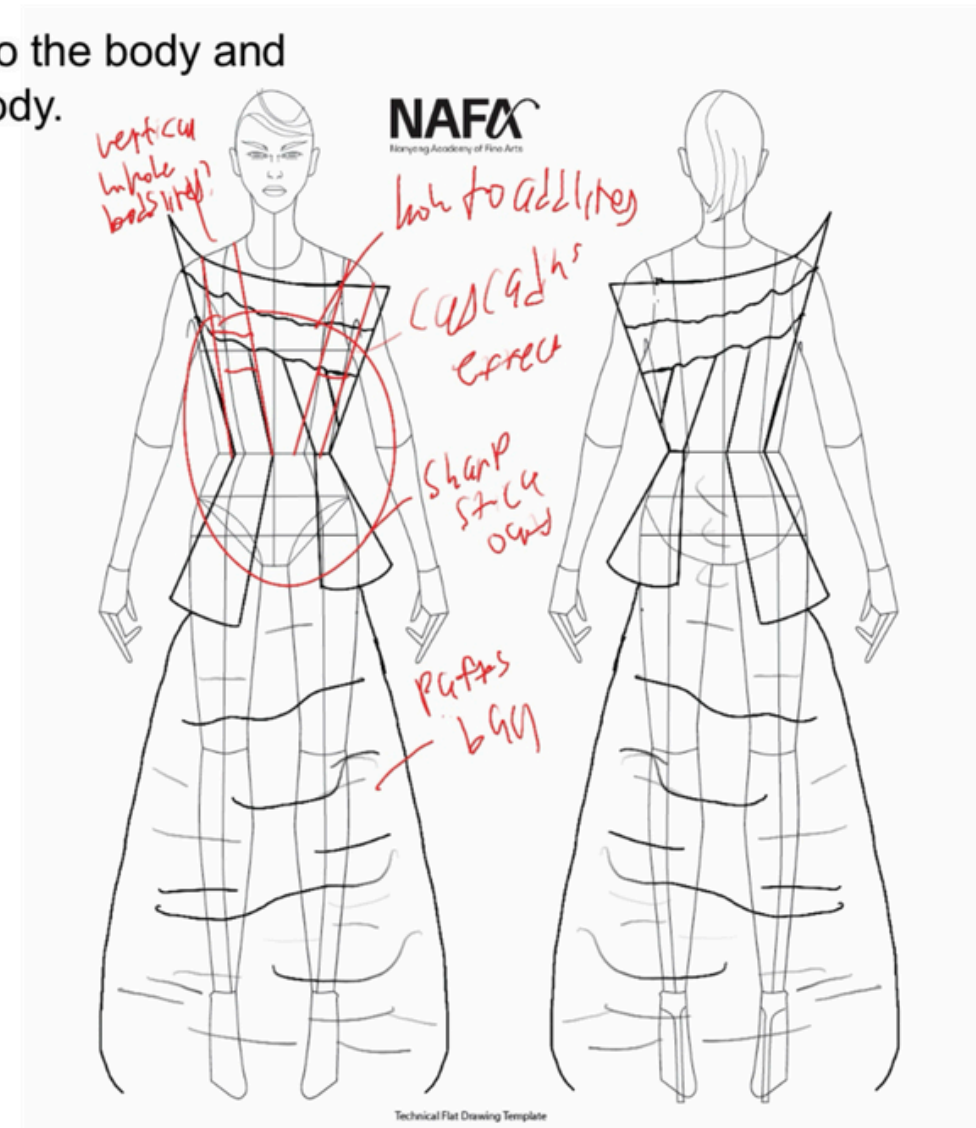
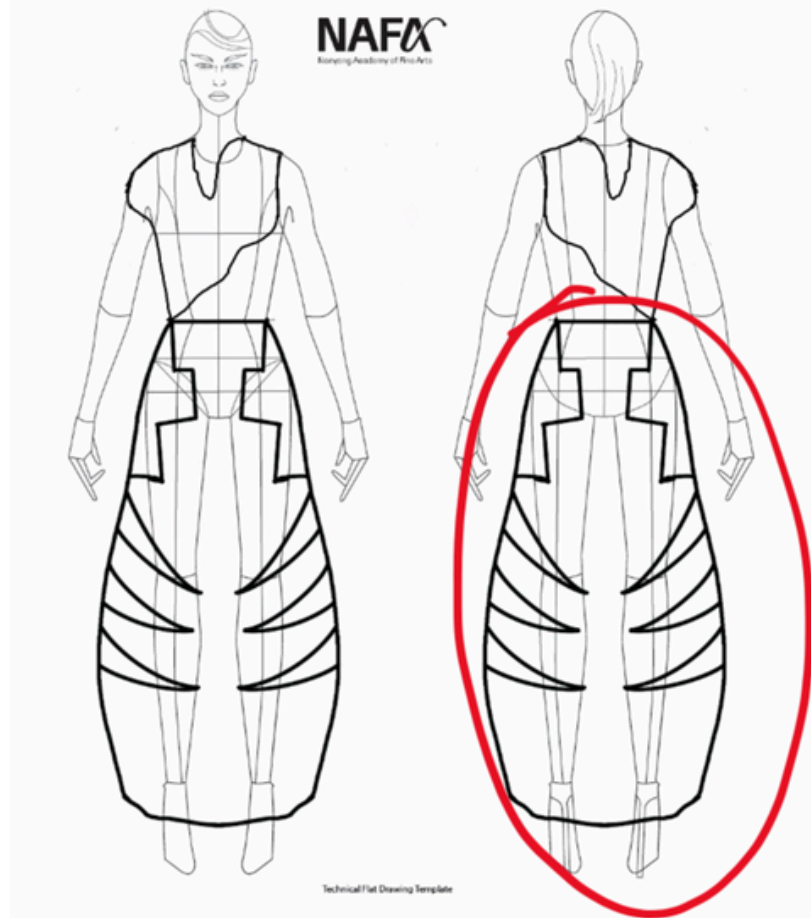
BACK



# LOOK2



Moulding on to the body and beyond the body.



THIS SKETCH SERVED AS THE FOUNDATION FOR LOOK 2, WHERE MY OBJECTIVE WAS TO CREATE A MINIMALIST DESIGN THAT UTILIZES THE LEAST AMOUNT OF FABRIC NECESSARY WHILE ENSURING FUNCTIONALITY. I EMPHASIZED DISTINCTIVE DETAILS IN THE TOP GARMENT, INCORPORATING MULTIPLE CUTOUTS AND A LONG STRAND THAT SERVES BOTH A FUNCTIONAL PURPOSE AND AS AN ACCENT, ALL WHILE CONSIDERING THE GARMENT'S MOVEMENT WITH THE WEARER.

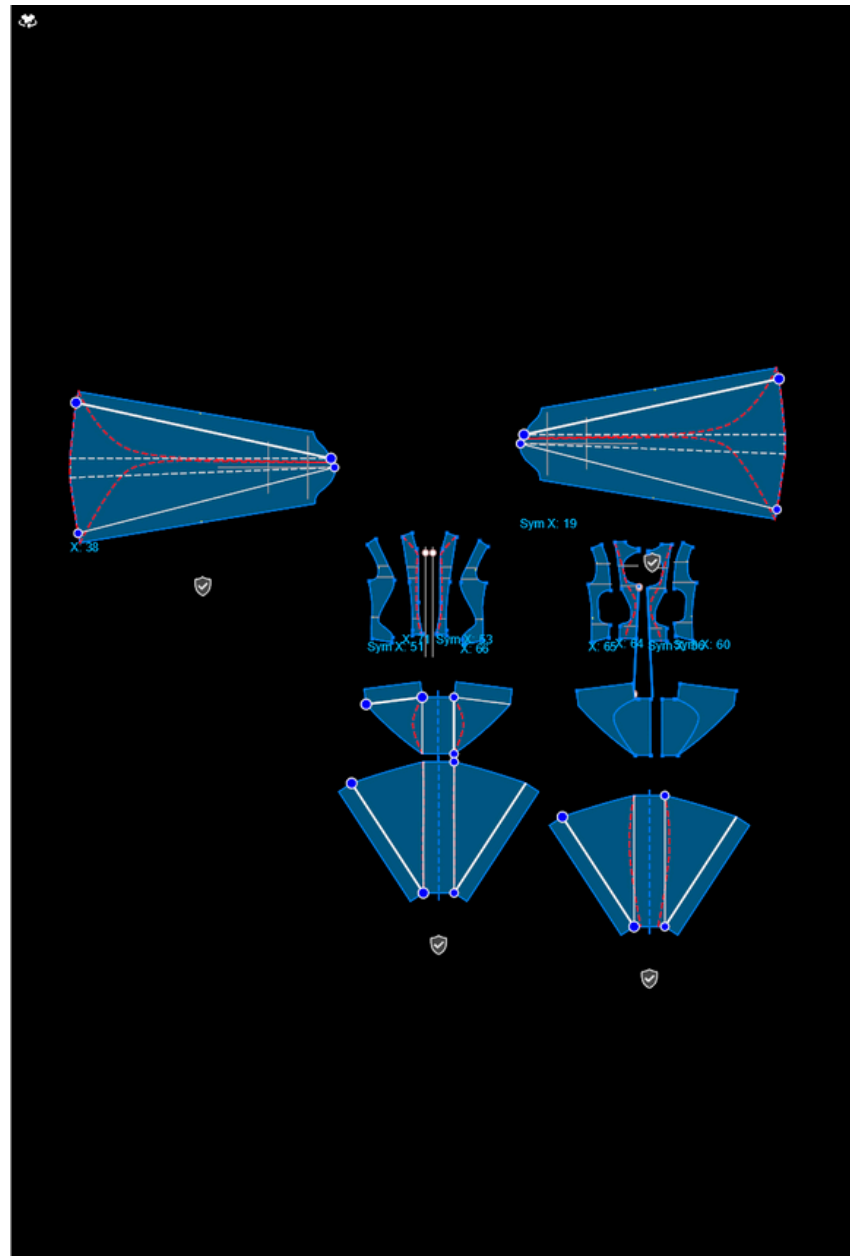
FOR THE TOP, I SELECTED A MATTE, NON-STRETCH NYLON IN A MUTED GREY HUE, WHICH ALIGNS WITH MY VISION OF A SUBDUED ARCHITECTURAL AESTHETIC. THE COLOR, ALONG WITH THE FLOWING LINES, REFLECTS THE MOTION AND FLUIDITY REMINISCENT OF CERTAIN BUILDINGS. THE GREY TONE EVOKES THE APPEARANCE OF CEMENT, WHILE THE LINES AND ACCENTS DRAW INSPIRATION FROM THE ARCHITECTURAL FEATURES DEPICTED IN THE ORIGINAL IMAGE.

CONCERNING THE SKIRT, THE ASSIGNMENT STIPULATED THE CREATION OF A BUBBLE SKIRT USING THE SLASH-AND-SPREAD TECHNIQUE. I EMPLOYED THIS METHOD TO CREATE THE BUBBLE SKIRT BUT OPTED FOR A BALLOON DESIGN WITH ACCENTUATED DETAILS INSPIRED BY ARCHITECTURAL ELEMENTS.

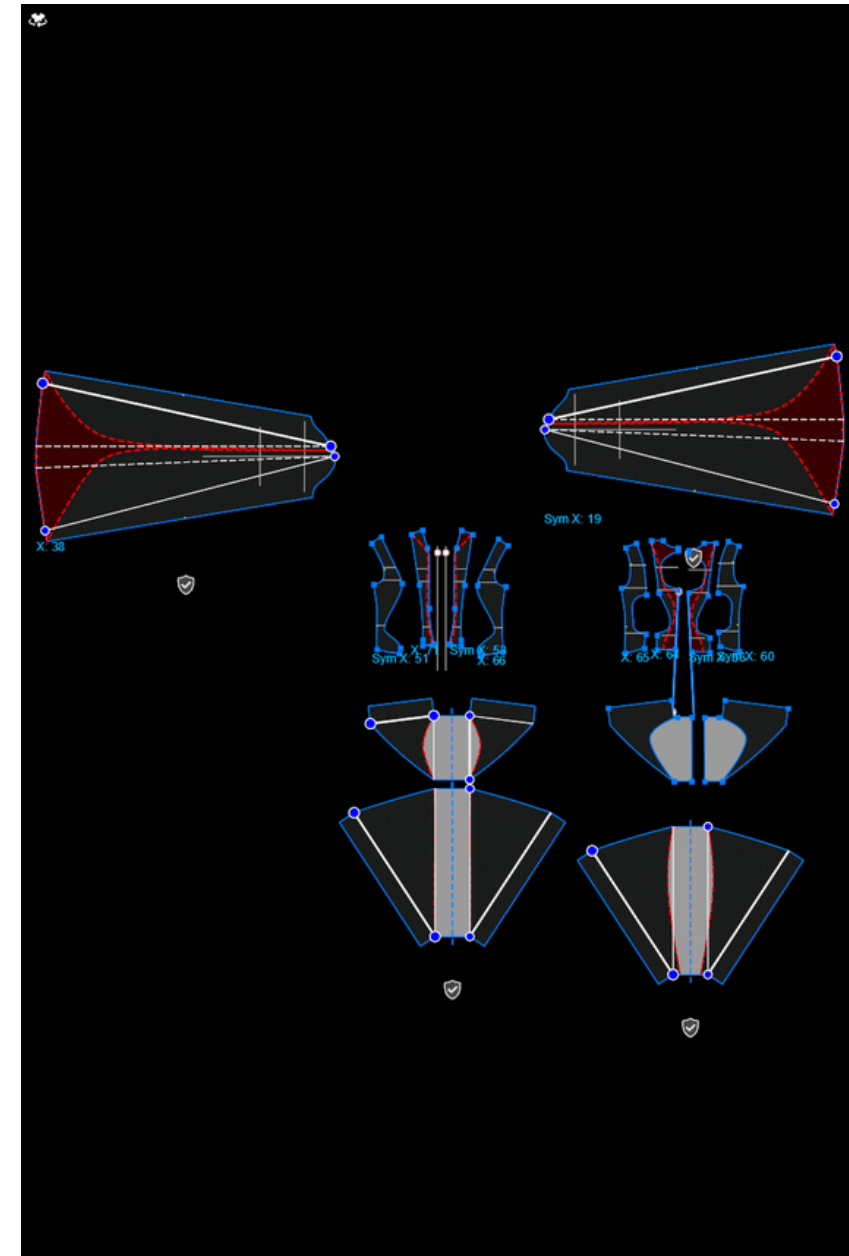
TO FURTHER ENHANCE THE ARCHITECTURAL THEME, I INCORPORATED TRIANGULAR ELEMENTS AT THE SIDES OF THE SKIRT AND CHOSE UNCONVENTIONAL MATERIALS SUCH AS BRUSHED METAL AND PVC. THE BASE OF THE SKIRT FEATURES A SIMPLE, STANDARD DESIGN, KEPT SHORT TO ALLOW THE BALLOON EFFECT TO ACHIEVE GREATER VOLUME. BY UTILIZING PVC, I ENVISIONED THAT THE BALLOON WOULD POSSESS AN INFLATABLE QUALITY, ENABLING IT TO CATCH AIR AND CONTRIBUTE TO THE OVERALL VOLUME OF THE BALLOON SKIRT EFFECT.



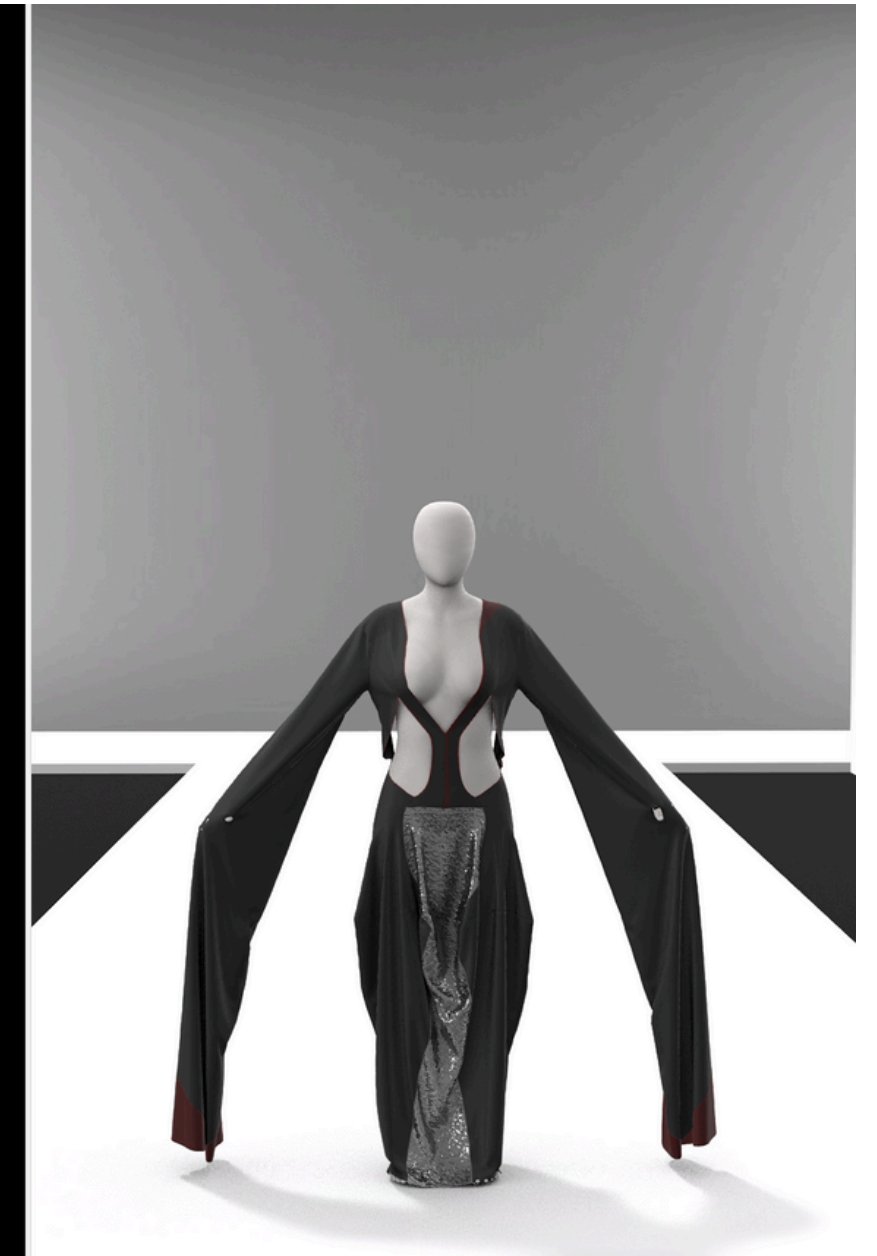
# LOOK3



MASTER PATTERN



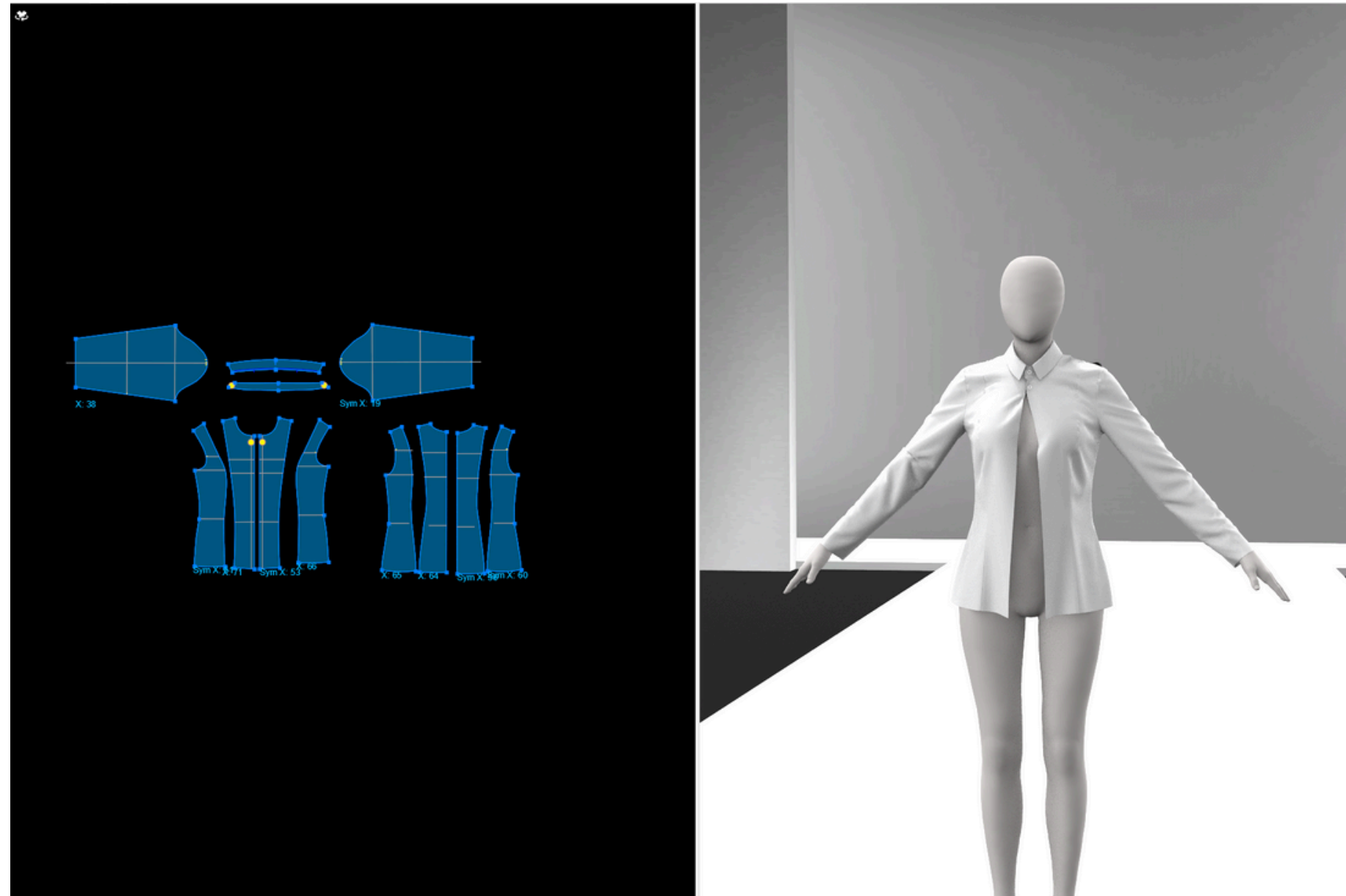
COLOUR PATTERN





# LOOK3

## BASE PATTERN FOR DESIGN SHIRT



FOR THIS LOOK, I UTILIZED THE UNFINISHED SHIRT PROVIDED BY THE SCHOOL AS THE FOUNDATION AND STITCHED IT TOGETHER. SUBSEQUENTLY, I EMPLOYED THE PEN TOOL TO CREATE SEVERAL CUTOUTS FROM THE PANELS, ENSURING SYMMETRY ACROSS ALL SECTIONS, WHICH FACILITATED THE PROCESS. AFTER GENERATING THE CUTOUTS AND REMOVING THE STITCH SEAMS, I VERIFIED THAT THE REMAINING CONNECTED SEAMS WERE OF EQUAL LENGTH FOR A PROPER FIT.

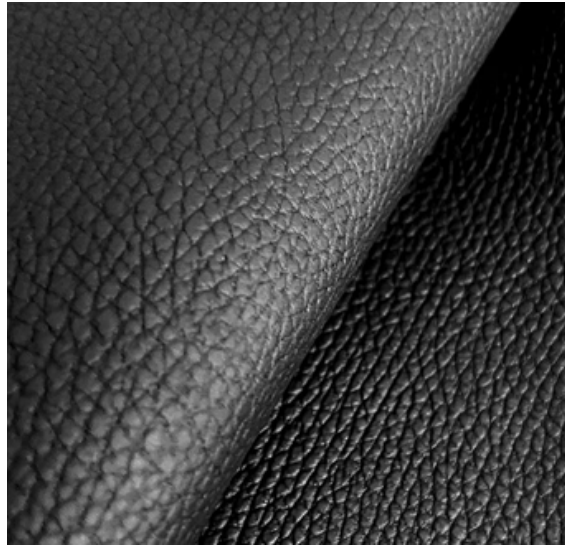
ONCE I COMPLETED THESE ADJUSTMENTS, I FOCUSED ON ENHANCING THE OVERALL FIT OF THE SHIRT BY REFINING THE SIDE SEAMS TO ACHIEVE A SLIGHTLY TIGHTER FIT ON THE BODY. AFTER FINALIZING THE SHIRT, I TURNED MY ATTENTION TO THE SLEEVES. I APPLIED THE SLASH AND SPREAD METHOD TO CREATE FLARED SLEEVES WITH AN EXAGGERATED LENGTH. FIRST, I EXTENDED THE SLEEVE TO THE DESIRED LENGTH AND THEN EXECUTED THE SLASH AND SPREAD TECHNIQUE FROM THE SLEEVE CAP TO THE HEM, RESULTING IN A BEAUTIFULLY FLARED LONG SLEEVE.

NEXT, I AIMED TO FULFILL THE ASSIGNMENT WITH A SKIRT DESIGN AND OPTED FOR A LANTERN SKIRT, WHICH REQUIRED TWO PANELS. I CREATED TWO RECTANGULAR PANELS CUT TO MY DESIRED LENGTH. FOR THE TOP PANEL, I ENSURED THAT THE TOP OF THE RECTANGLE MATCHED THE MEASUREMENTS OF THE TOP SEAM, AS I DECIDED TO DESIGN A DRESS. FOR THE BOTTOM PANEL, THE TOP SEAM NEEDED TO ALIGN WITH THE BOTTOM SEAM OF THE TOP PANEL, WHILE I ALSO TAPERED THE BOTTOM SEAM OF THE BOTTOM PANEL SLIGHTLY TO ENHANCE ITS FIT.

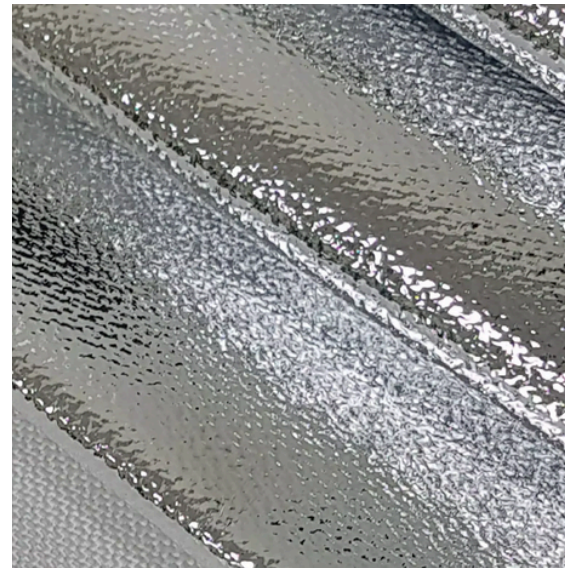
FINALLY, I APPLIED THE SLASH AND SPREAD METHOD TO BOTH PANELS. FOR THE TOP PANEL, I SLASHED AND SPREAD DOWNWARDS, WHILE FOR THE BOTTOM PANEL, I SLASHED AND SPREAD UPWARDS, ENSURING THAT THE SLASHING AND SPREADING WERE EXECUTED EVENLY TO ENSURE THAT THE SEAMS ALIGNED PROPERLY.

# LOOK3

## FABRICS



LEATHER



ALUMINUM FOIL



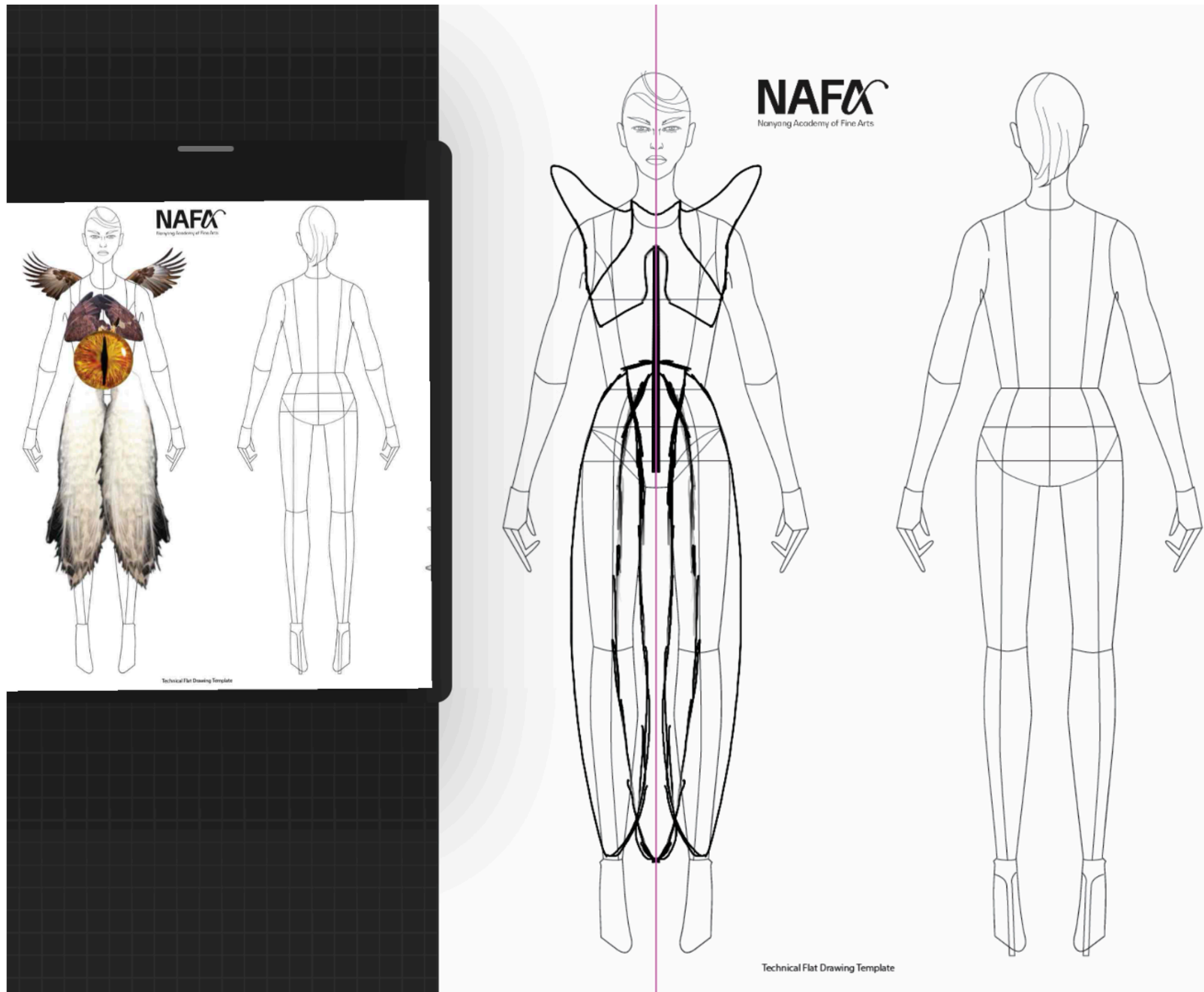
FRONT



BACK



# LOOK3



**THIS DESIGN DRAWS INSPIRATION FROM THE THEME OF SPIRITUALITY WITHIN FOLKLORE, PARTICULARLY AS EXPRESSED IN LOOK 3. FROM THE INITIAL SKETCH, I WAS CAPTIVATED BY THE OVERLAPPING PANELS OF THE SKIRT, WHICH I AIMED TO REPLICATE IN THE FINAL GARMENT BY INCORPORATING SLICED LINES TO ACHIEVE A SIMILAR VISUAL EFFECT. ADDITIONALLY, I ADMIRERD THE CUTOUT DETAIL ON THE TOP, WHICH I SUCCESSFULLY INTEGRATED INTO THE FINAL PIECE.**

**WHILE THIS LOOK WAS INFORMED BY THE INITIAL SKETCH, IT ALSO EVOLVED FROM THE GARMENT'S PATTERNS, ESPECIALLY SINCE THE PANELS WERE NOT STITCHED TOGETHER. THIS SEPARATION ENABLED ME TO CREATE CUTOUTS THAT PRESERVED THE GARMENT'S INTEGRITY WHILE ENHANCING ITS VISUAL APPEAL. BY STRATEGICALLY STITCHING THE PANELS, I ACHIEVED A COHESIVE DESIGN THAT BALANCES CREATIVITY WITH STRUCTURAL STABILITY.**

**FOR THIS LOOK, I FOCUSED PRIMARILY ON THE PATTERN PIECES, EXPLORING VARIOUS WAYS TO MANIPULATE THEM FOR THE DESIGN. THIS APPROACH ALLOWED FOR GREATER CREATIVE FREEDOM, DRAWING INSPIRATION MAINLY FROM THE SKIRT WHILE EXPERIMENTING WITH HOW THE PATTERN PIECES COULD INTERACT WITH THE BODY. THE RESULT IS AN INTRIGUING GARMENT FEATURING THOUGHTFULLY PLACED CUTOUTS THAT CONTRIBUTE TO ITS OVERALL AESTHETIC.**

# FINAL LINE UP

