

Rulebook- Visual Guidelines

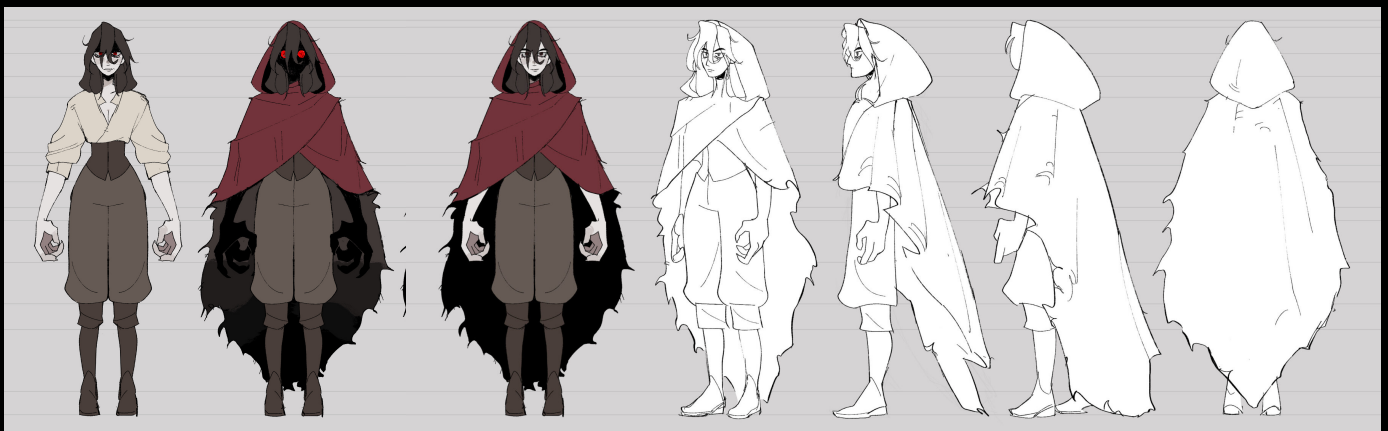
Lineart

We need sketchy, overlapping lines. You can leave some construction lines as well. Little to no cleanup needed.

Medium/thick lines with pen pressure turned on and weight variations.

FOR RED :

- GETS EVEN MORE SKETCHY AS HER MIND GETS MORE DISTORTED (EX: WHEN SHE REALISES WHO SHE KILLED)
- CROSS HATCHING INSIDE THE HOOD INSTEAD OF SHADOW

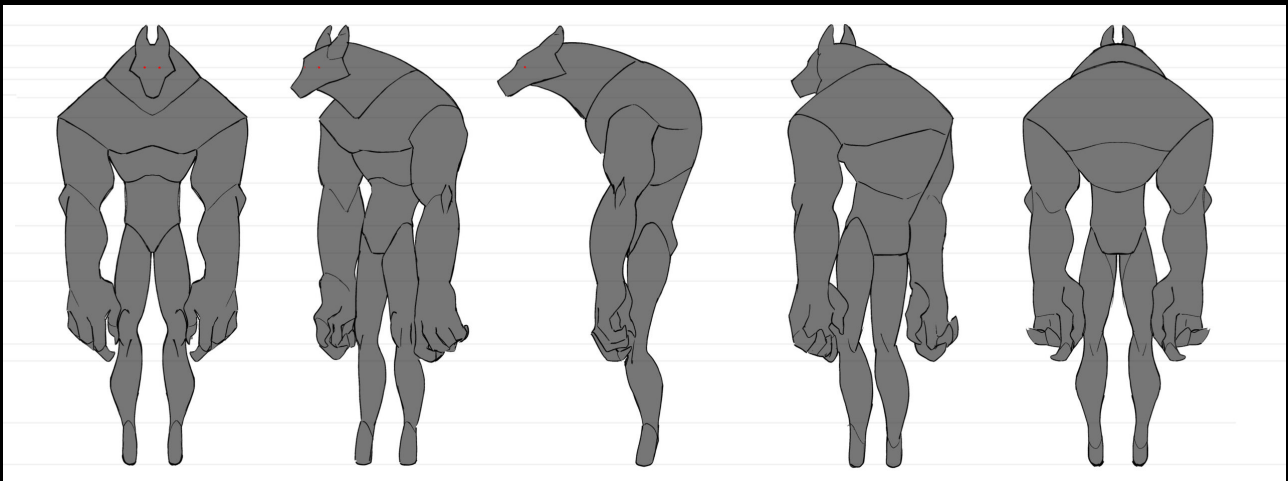


ALSO AS A GENERAL GUIDELINE, THESE ARE THE SIMPLEST LINES YOU SHOULD BE PLAYING WITH WHEN IT COMES TO EXPRESSION. KEEP IT SIMPLE BUT EFFECTIVE

UNLESS EMOTING SEMI HEAVILY, THE ONLY "WRINKLES" THAT SHOULD BE VISIBLE ARE HER EYE BAGS AND UNDERLIP. FOR EYE BAGS YOU CAN USE AS MANY LINES AS YOU SEE FIT DEPENDING ON HOW MUCH IT HELPS PUSH THE EXPRESSION IN TERMS OF TIREDNESS



FOR THE WOLF:
-NOT MUCH LINE ART NEEDED, AS HE IS A BLOCK OF BLACK FOG. ALSO VERY FLOWY



Shading/ coloring/ lighting

Color pallet Little Red

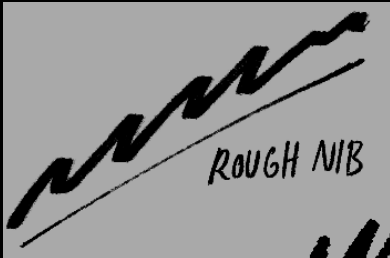


Wolf is simple black.

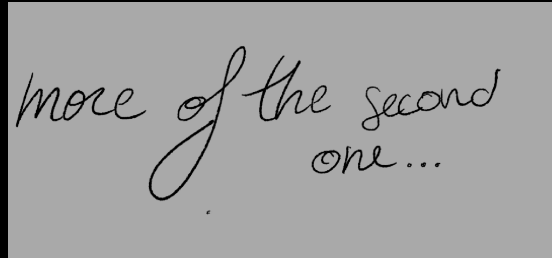
Programme

TV paint, Clip Studio, Toon Boom

Clip Studio-Size 12



TV Paint - Pen 6- Size 20



Brush setting

Resolution -1920-1080px
300dpi

Naming system

Shot_nr_In progress/finished