

CASA KEÇE

NATURAL PARK VEXIN , FRANCE

| A MODERN MINIMALIST
HOME IN A TRADITIONAL SETTING.

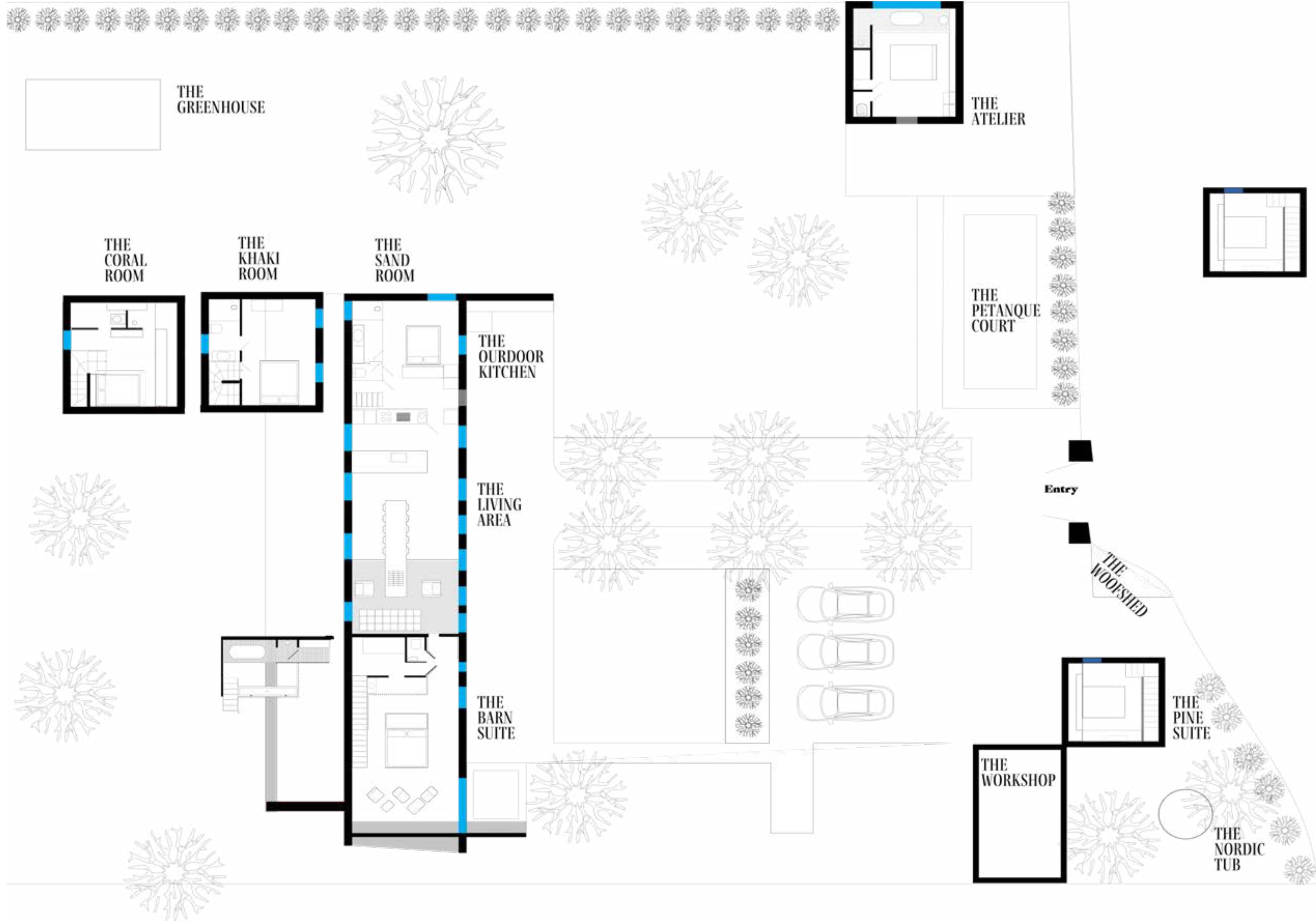
BEDROOMS	MINS. TO PARIS	DWELLINGS	ACCOMMODATES
7	45	3	14

Casa Keçe is a modern minimalist home situated in the Vexin Nature Reserve, one hour from Paris. The 3,600 square meter property comprises a main house and two guest suites, accommodating up to 14 adults in 3 suites and 3 double bedrooms. Outdoor amenities include a greenhouse, woodfire Nordic bath, pétanque court, an outdoor BBQ terrace and a woodfire pizza oven.



A modern living space featuring a cozy fireplace, curated designer furniture, and a 16-foot pink concrete table.

The Floor plan	6
The Main House	8
Private Quarters	29
Join Us Outside	81
Recognition	98





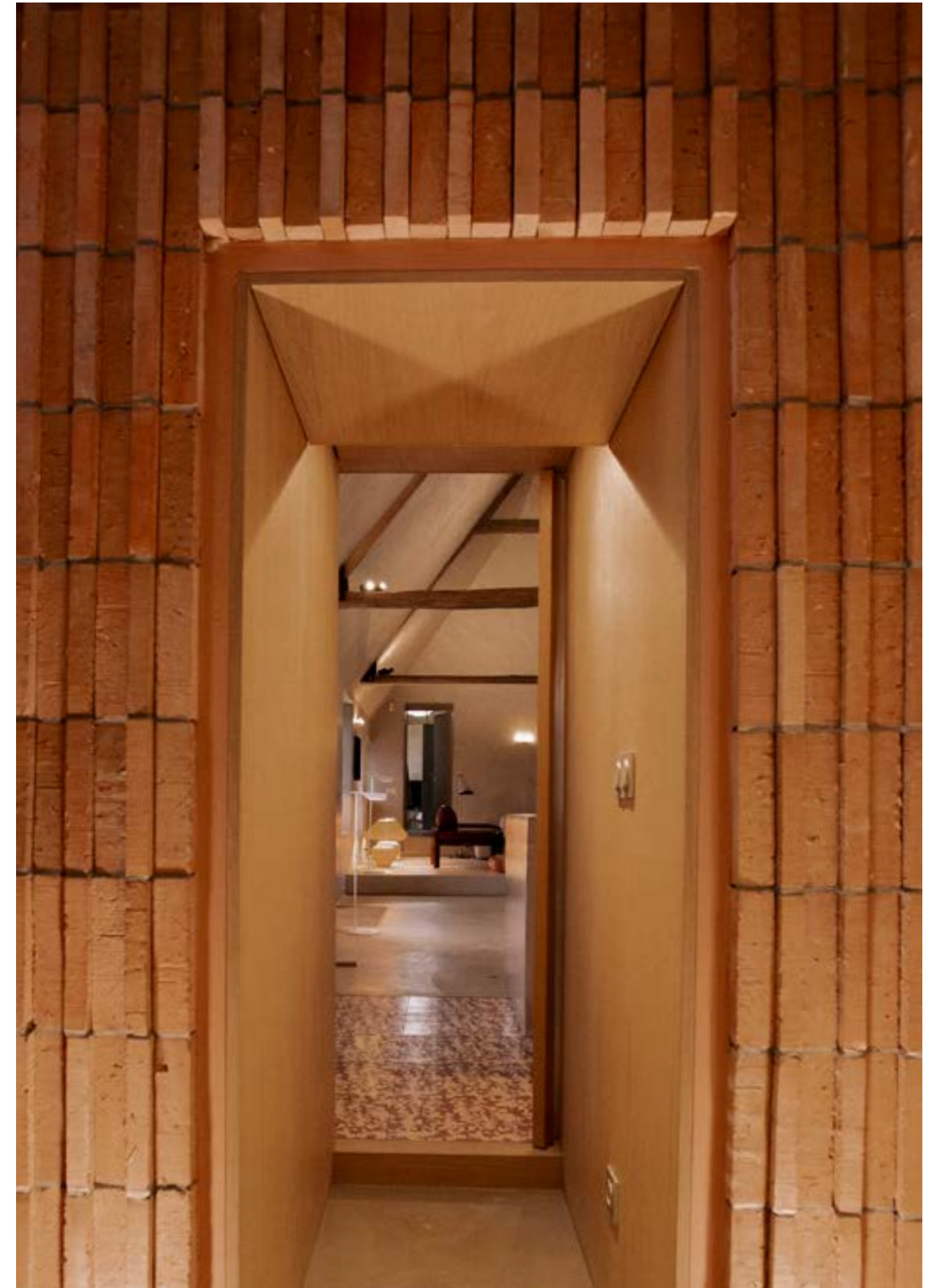
THE MAIN HOUSE

The main house of Casa Keçe is a stunning blend of modern design and rustic charm. At its heart is an expansive open-concept living area that seamlessly combines the kitchen, dining, and lounge spaces. The main house includes several beautifully appointed bedrooms, including the spacious 100sqm Barn Suite,

which provides luxurious accommodations. The tower block contains three additional bedrooms: The Sand Room, a cozy 12sqm space on the lower level; The Khaki Room, a generous 20sqm room located on the 2nd floor; and the Coral Room in the attic area, offering a snug 12sqm space with a full ensuite.



Red face brick walls line the corridor, creating a warm passageway that elegantly connects the living area to the private quarters.



SOCIAL SPACES

In the open living area, the kitchen features a fully equipped island counter designed for culinary enthusiasts.

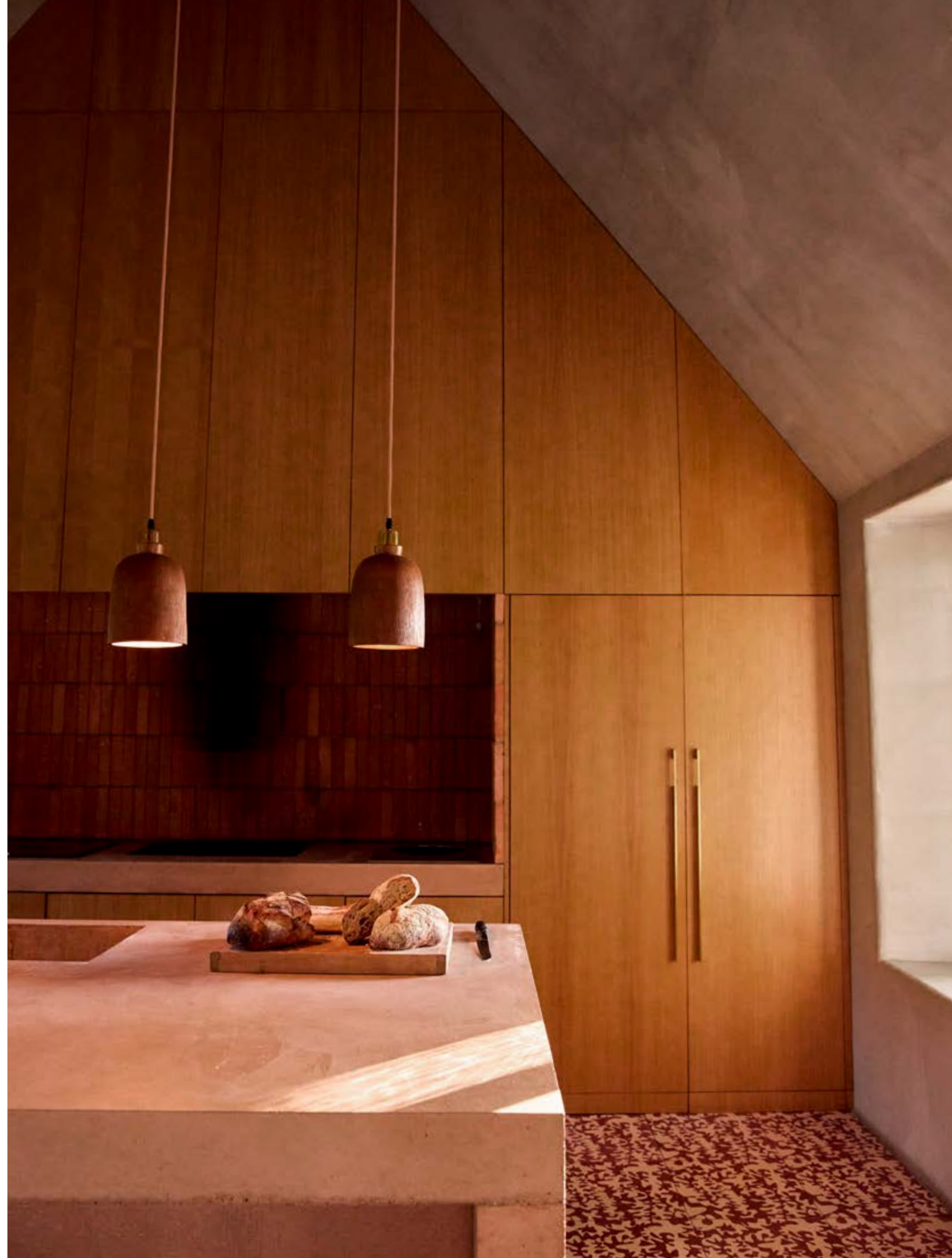
It includes a wok top for stir-frying and Asian cuisine, a high-end coffee machine for barista-quality brews, and a built-in BBQ grill for indoor grilling year-round. These appliances make the kitchen a chef's delight,

blending functionality with gourmet capabilities. This thoughtfully designed space seamlessly integrates the kitchen, dining, and lounge areas, creating an inviting atmosphere perfect for relaxation, entertainment, and shared moments. The versatile kitchen enhances the area's appeal, ideal for everything from casual family dinners to elaborate gatherings.



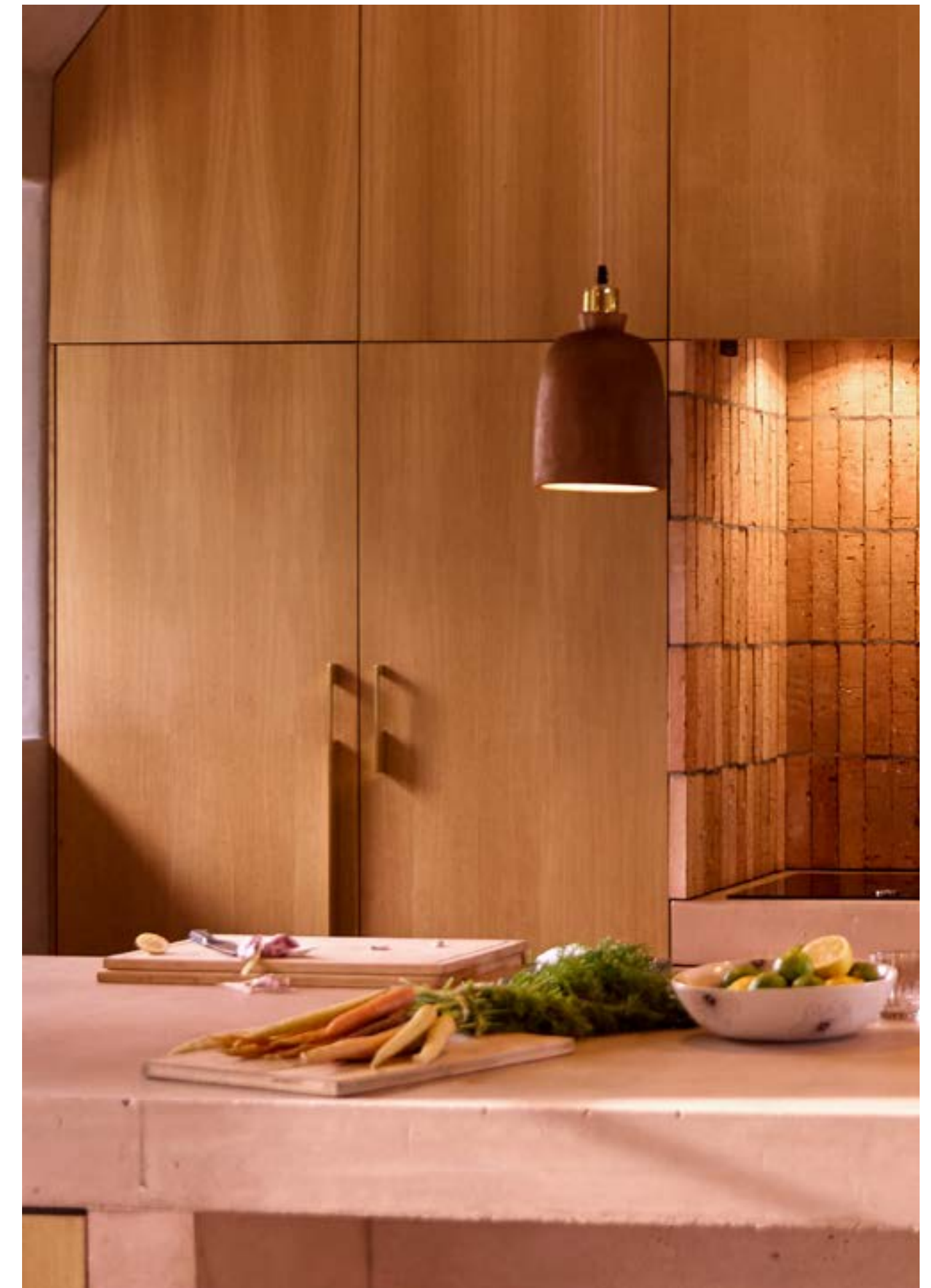


Cement tiles designed by Alix Petit Keçe.





Kitchen features a commercial stove, wood-fired BBQ grill, and wok burner.



Home-grown produce, with a double-door fridge concealed behind sleek wooden cupboards.



Custom kitchen featuring sleek concrete countertops and minimalist cabinetry, offering ample storage and functionality for culinary enthusiasts. Suspension lights hang overhead, while a discreet cupboard door leads to the tower block with the private quarters.



The lounge area featuring an embedded fireplace.

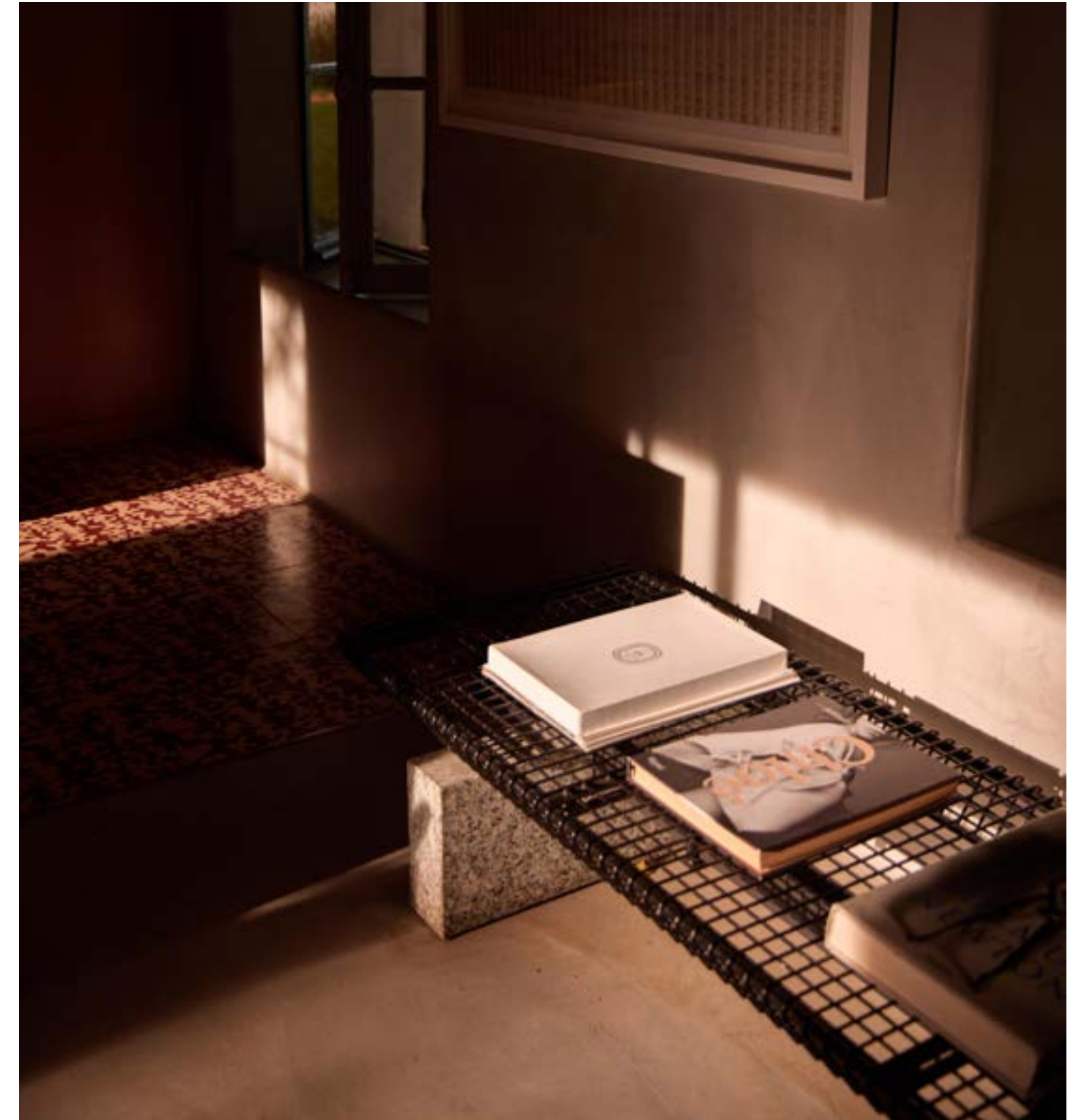




The living area is styled with 1930s chairs by Hynek Gottwald, Gae Aulenti lounge chairs, and a Tufty Time sofa from B&B Italia, blending vintage and modern elegance.



The lounge area with a Mies van der Rohe Barcelona chair.



Side bench by Osvaldo Borsani.

At the heart of the living area is a striking 16-foot pink concrete table, ingeniously bridging the living and dining spaces. This multifunctional piece serves as both a dining surface and coffee table, with an embedded fireplace creating a cozy gathering spot. Its raw texture mirrors the kitchen countertops, ensuring a cohesive aesthetic with hidden

electrical outlets that add practicality. The living area is furnished with Gae Aulenti lounge chairs, a Tufty Time sofa from B&B Italia, and a Mies van der Rohe Barcelona chair around the table's fireplace end. The dining area features vintage 1930s chairs by Hynek Gottwald, adding a touch of elegance.

PRIVATE QUARTERS

Designed for ultimate comfort and privacy, Casa Kece offers a refined retreat with three private suites and three double bedrooms. The Barn, Pine, and Atelier Suites and the Sand, Khaki, and Coral Rooms offer luxurious and spacious lodging. Each room is thoughtfully

arranged with modern furnishings and finishes, ensuring a stylish and serene environment. All private quarters feature en-suite bathrooms, enhancing the sense of exclusivity and convenience throughout the home.

01

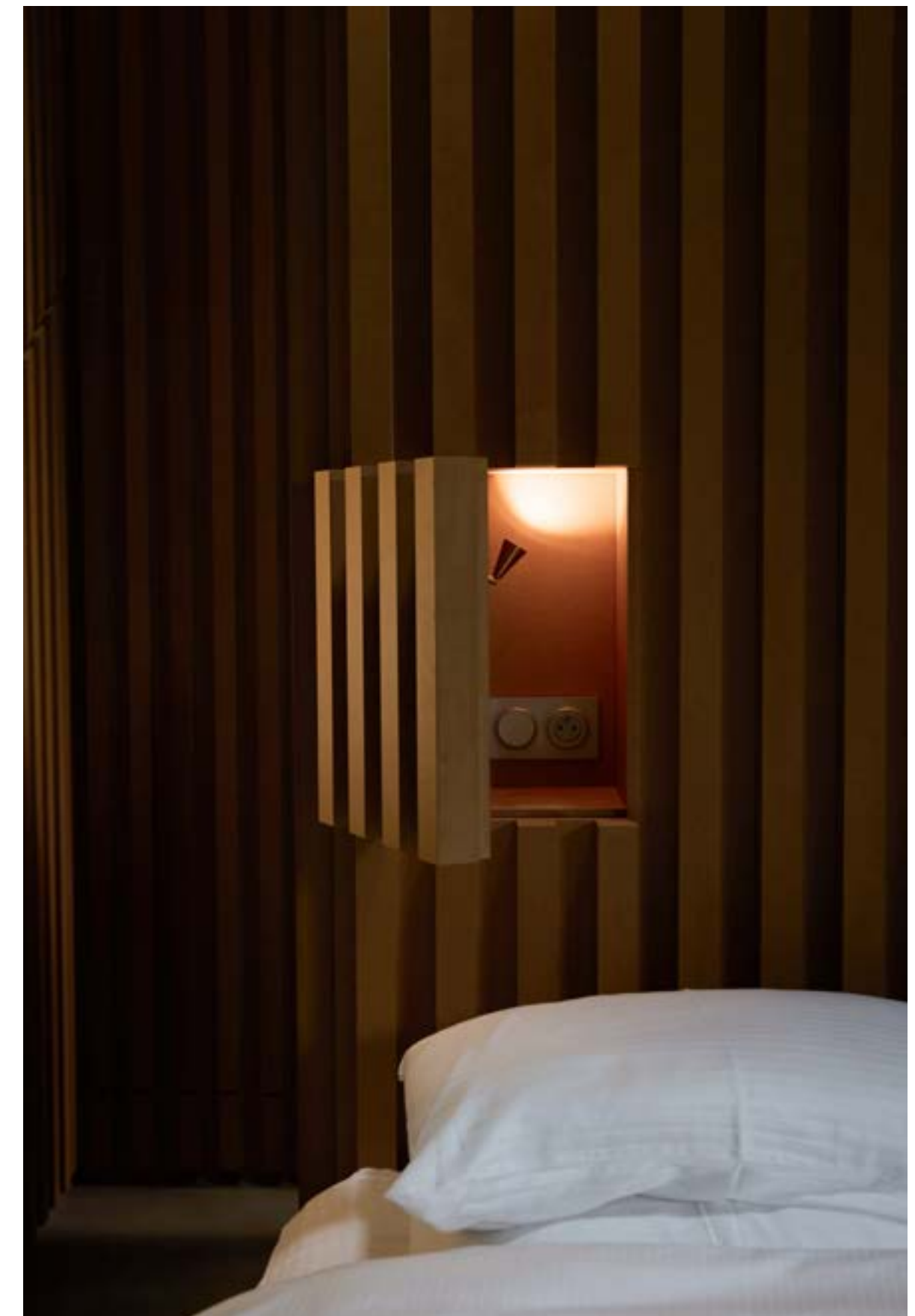
THE BARN SUITE

The crowning jewel of Casa Keçe's main house is the exquisite Barn Suite, a masterpiece of luxury and comfort spanning an impressive 100sqm. This opulent master bedroom is a sanctuary of relaxation and style, featuring a private cozy lounge area perfect for quiet

evenings, and a dedicated office nook for those who need to stay connected. A spa-like exotic wood-clad mezzanine bathroom, complete with a clawfoot tub, generous shower, and sauna, adds a whimsical touch, making it a truly delightful retreat.







The bedrest has a built-in evening nook with a reading light, electricity for recharging, and enough space to place your sleeping ritual pieces.



A hidden television reclines from behind the floating concrete wall, offering alternative entertainment and relaxation.



Next to the shower, the private sauna invites ultimate relaxation with its sleek design and calming ambiance.



On the top platform, the private sauna overlooks the fireplace below. Japanese-style wood slats lead the eye to the 7-meter high ceiling while cleverly concealing the toilet, his-and-hers wardrobes, and the kids' walk-in wardrobe room.



The internal concrete bench extends seamlessly to the exterior fireplace, with a 3-meter high double glass door that swings open to create a fluid indoor-outdoor living space.



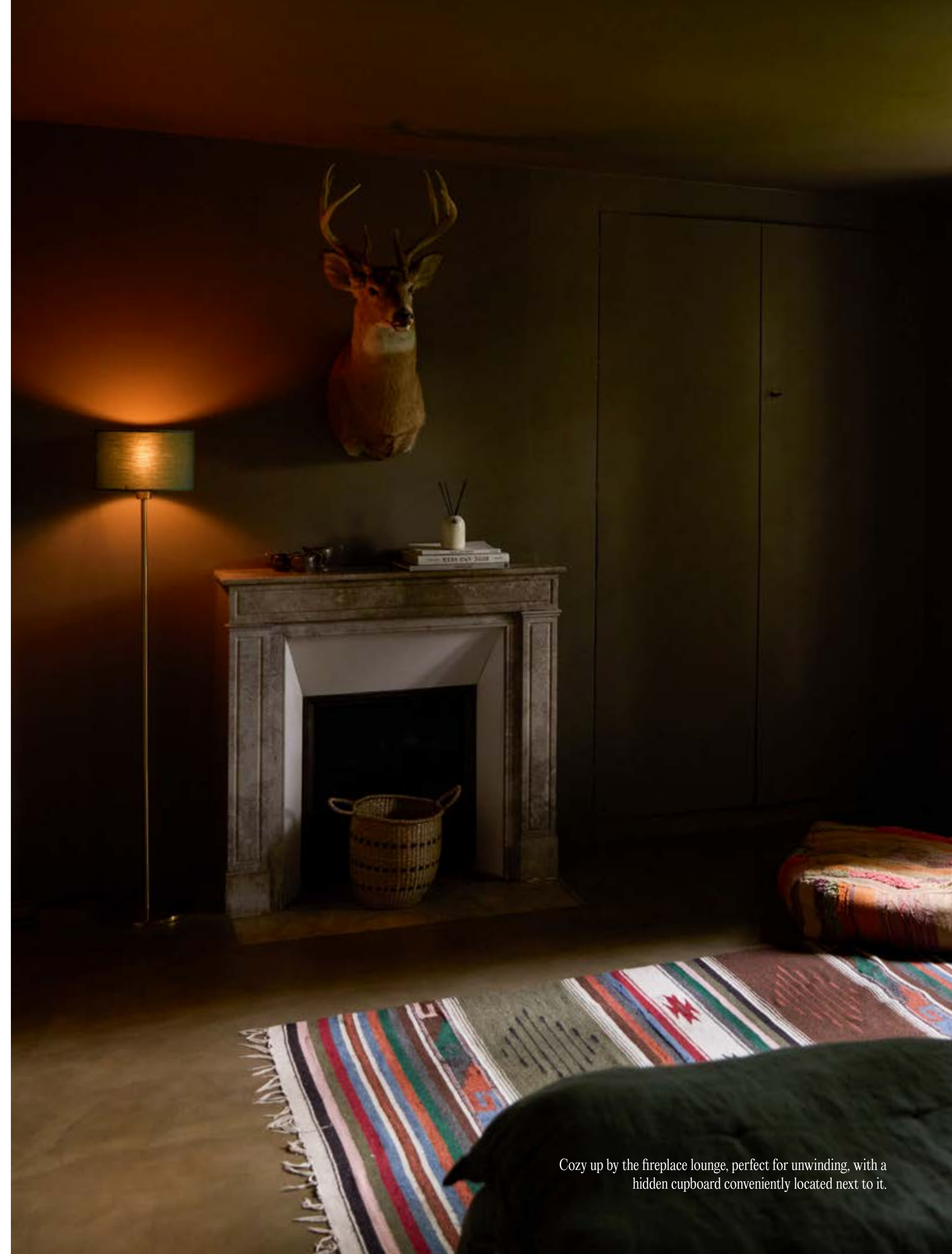
A double concrete slab overlooks the master suite and provides ample storage for personal essentials beneath.

02

THE KHAKE ROOM

The Khaki Room, a generous 20sqm haven located on the 2nd floor of the tower block, features a versatile king-size bed that can be converted into two singles to suit different needs. The room boasts a cozy fireplace lounge and an

en-suite bathroom that overlooks the greenhouse outside, adding a touch of luxury. This inviting space is perfect for unwinding and enjoying a warm, charming atmosphere.



Cozy up by the fireplace lounge, perfect for unwinding, with a hidden cupboard conveniently located next to it.



A 20sqm room located on the 2nd floor.



Round vessel sink on a concrete countertop, with an irregularly shaped mirror, side makeup lighting and ample storage for personal essentials beneath.



Snuggle up with a book in bed.



Versatile king-size bed converts into two singles, offering flexible comfort.

THE CORAL ROOM

Perched in the attic area of the tower, the Coral Room offers a snug 12sqm space that exudes cozy comfort. Despite its compact size, this room features a full ensuite, providing all the necessary amenities for a comfortable stay. A charming skylight crowns the space, bathing it in natural light and creating an airy ambiance. Clever design elements make the most of the room's dimensions,

with built-in storage racks along the sloping walls providing ample space for guests to organize their belongings. These racks blend seamlessly with the room's decor, maintaining the clean, open feel of the space. The Coral Room's unique attic location adds a whimsical touch, evoking memories of childhood hideaways and secret nooks.







Fresh air streams through the skylight, illuminating the cozy bed and built-in storage racks.



Round vessel sink on a concrete countertop, side makeup lighting and ample storage for personal essentials beneath.



The cozy bed in a snug 12sqm invites peaceful repose.

04

THE SAND ROOM

Located on the lower level of the tower block is the Sand Room, with a queen size bed in a cozy 12sqm retreat. This intimate space features a private ensuite, making it a perfect sanctuary for restful nights. The ensuite bathroom boasts a

unique feature: a shower with a window overlooking the garden, offering a refreshing connection to nature during your morning routine. Its snug ambiance invites relaxation and tranquility, ensuring a peaceful escape.





A queen size bed in a cozy 12sqm retreat.



Sunlight streams onto the cozy bed, framed by views of both front and back gardens.



A round vessel sink on a concrete countertop with cement tiles designed by Alix Petit Keçe.



Enjoy a morning pot of tea for two.

THE KIDS ROOM

Located within the Barn suite, you'll find a kids/singles room. The room includes a bunk bed that can accommodate two and an en-suite bathroom, along with hidden wall cupboards for storage. This versatile

space can comfortably accommodate two adults if needed, making it an ideal option for families or groups requiring additional sleeping arrangements.





Bunk beds in the 'kids' room, perfect for young adventurers or adult guests.



A Rainbow theme continues the feature.

An en-suite 'kids' bathroom with a square sink and storage cabinets for personal items.



The Pine Suite, an independent cottage with a private entrance located on the right side of the front yard.

06

THE PINE SUITE

The Pine Suite offers an expansive 32 square meters spread over two beautifully appointed levels, ensuring a perfect retreat for guests seeking both space and comfort. The top floor is dedicated to restful sleep, featuring a plush Queen

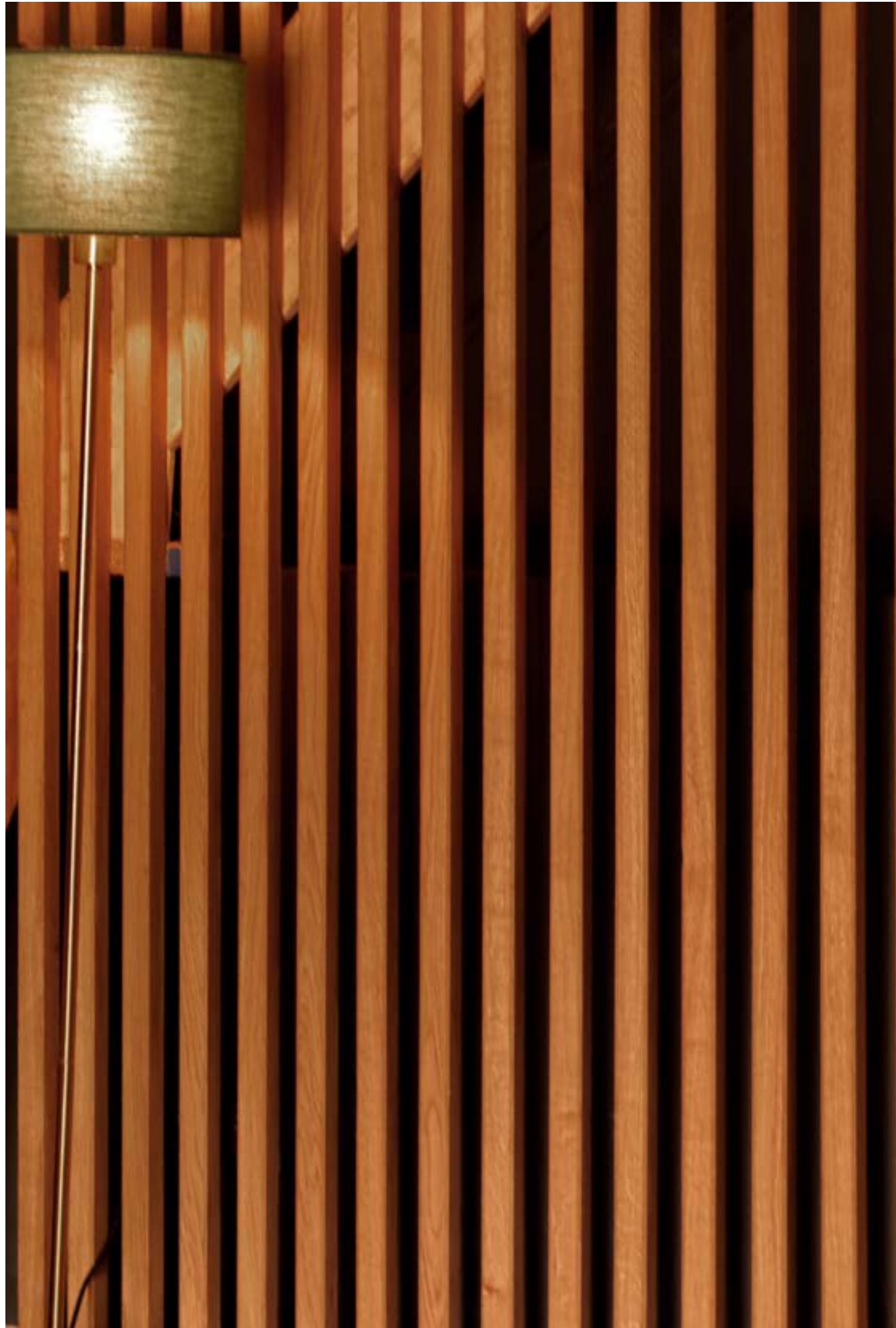
bed that ensures a peaceful night. On the lower level, a well-designed bathroom and a comfortable living area await. The living area includes a fold-out double sofa bed, providing additional sleeping space for guests or a cozy spot to unwind.



Relax in the Pine Suite's plush Queen bed within its spacious 32-square-meter retreat.



The bathroom featuring a round wall-hung basin and contemporary fixtures.



The staircase from the lower level to the bedroom is concealed with elegant oak detailing.



The cozy lounge area of the Pine Suite, featuring a fold-out double sofa bed.

07

THE ATELIER SUITE

The Atelier Suite is an independent haven with an impressive 5-meter ceiling height, spanning a generous 30 square meters of elegantly designed space. The centrepiece of this suite is a luxurious California King bed, promising unparalleled comfort. Adding

to the suite's charm is a classic clawfoot bath, perfect for a relaxing soak, and a detached shower for a refreshing start to the day. Outside, a wood fire pit invites you to enjoy cozy evenings under the stars, creating a perfect blend of indoor luxury and outdoor tranquility.

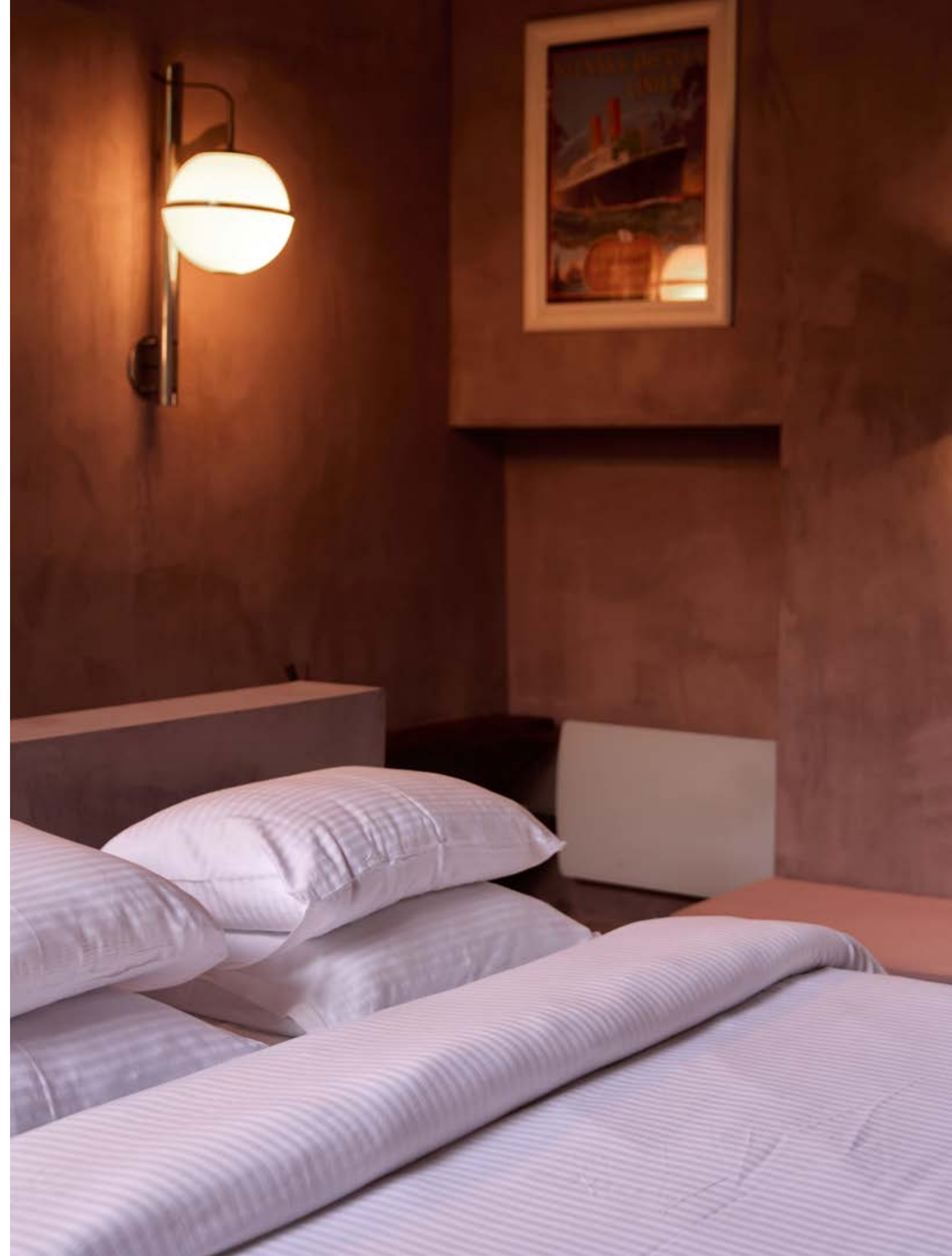




The luxurious California King bed of the Atelier Suite, nestled within its elegant 30-square-meter retreat.



Oversized frosted windows illuminate the clawfoot bath, creating a serene and light-filled bathing experience.





Enjoy cozy evenings by the inviting outdoor fire pit, perfect for starlit gatherings and relaxation.



An en-suite bathroom featuring a stylish cylindrical stand sink.



JOIN US OUTSIDE

Embrace the allure of outdoor living at Casa Keçe with a range of thoughtfully designed amenities that invite relaxation and enjoyment in the fresh air. The property features three inviting wood fire pits spread across the grounds, perfect for cozy gatherings and creating a warm ambiance as the sun sets.

A fire pit enhances the ambiance of the luxurious Nordic bath, located at the top of the garden. This inviting setup provides a cozy touch to your relaxation while offering stunning views of the expansive open field. Another fire pit graces the terrace of the Atelier Suite, ensuring warmth and comfort even as the evening cools. The pétanque court adds a touch of classic French leisure,

allowing guests to enjoy friendly games of this traditional sport in a picturesque setting.

For culinary enthusiasts, the outdoor BBQ terrace and wood-fired pizza oven are ready to host memorable meals, whether you're grilling a feast or baking artisanal pizzas. Layback chairs are strategically placed for sunbathing or enjoying a refreshing drink.

The front terrace features the wood-fired BBQ, a long seating area, and the pizza oven, creating a perfect setting for social gatherings and al fresco dining. The back terrace, with its six-seater table, is ideal for leisurely breakfasts or intimate dinners.

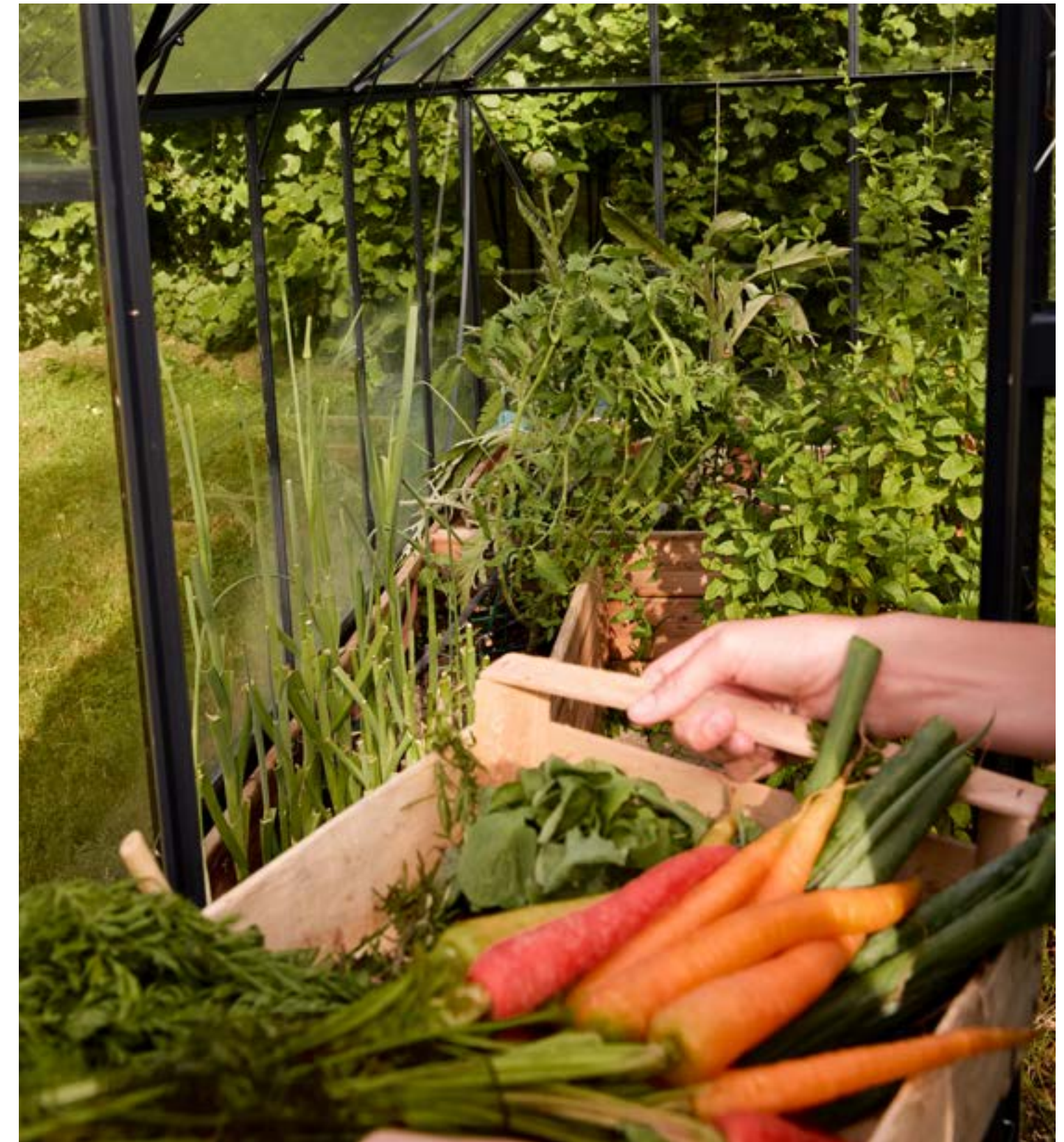




Unwind in the Nordic bath, with stunning garden and landscape views.



Explore the greenhouse at Casa Keçe, where seasonal produce thrives and guests can enjoy the joys of homegrown harvests.



Homegrown produce from the greenhouse.

In the open expanse of the lawn, a solitary greenhouse at Casa Keçe serves as the heart of a homegrown produce operation, offering a seasonal bounty from lettuce and radishes in spring to cold-hardy greens in winter. Guests can immerse themselves in this agricultural haven by picking their own produce and engaging

in planting, tending, and harvesting, all while learning about sustainable practices and savoring fresh, homegrown greens during their stay. This unique experience provides a refreshing escape from the ordinary, connecting guests with nature and the joys of sustainable living.



The pétanque court, where classic French leisure meets picturesque outdoor charm.



Fire up artisan pizzas in the wood-fired pizza oven.



Exterior fireplace extending from the internal concrete bench of the Barn Suite.



Charming French shutters adorn the exterior of the home's back side, blending classic elegance with modern design.



Expansive open lawn in the backyard, perfect for relaxation and outdoor activities.



Spacious long seating, ideal for relaxed outdoor gatherings and leisurely meals.



RECOGNITION

The home has garnered international acclaim from the design and architecture community. Dwell Magazine USA recognized it as one of the best renovations of the year, while Marie Claire Homes highlighted it as one of the finest homes in

France. Additionally, it has been honored by being featured in top publications worldwide. The home also boasts a social following of 21K design enthusiasts and a strong demand for stays.

marie claire
Maison

Ideas y Tendencias
INTERIORES

**SCHÖNER
WOHNEN**

dwell

Milk

E L L E
DECORATION

living
MAGAZINE

SABATO.

