

# Love Letter

TV SERIES



# IN THE WINTER, HIROKO LOSES HER FIANCÉ...

LOVE LETTER

SHE SENT A LETTER TO HEAVEN.

BUT SHE GOT AN  
UNEXPECTED  
REPLY.



IN AN EXCHANGE OF LETTERS  
WITH THE PERSON WHO  
ANSWERED THE LETTER.

LOVE LETTER


A LONG-DORMANT YOUTHFUL  
LOVE STORY HAS BEEN REVEALED.



# *LOGLINE*

After receiving a letter addressed to her late fiancé, Hiroko embarks on a journey of memory and emotion when she receives a reply from an unexpected source. The series explores love, loss, and the delicate connections we form with others —both those we know and those we never meet.

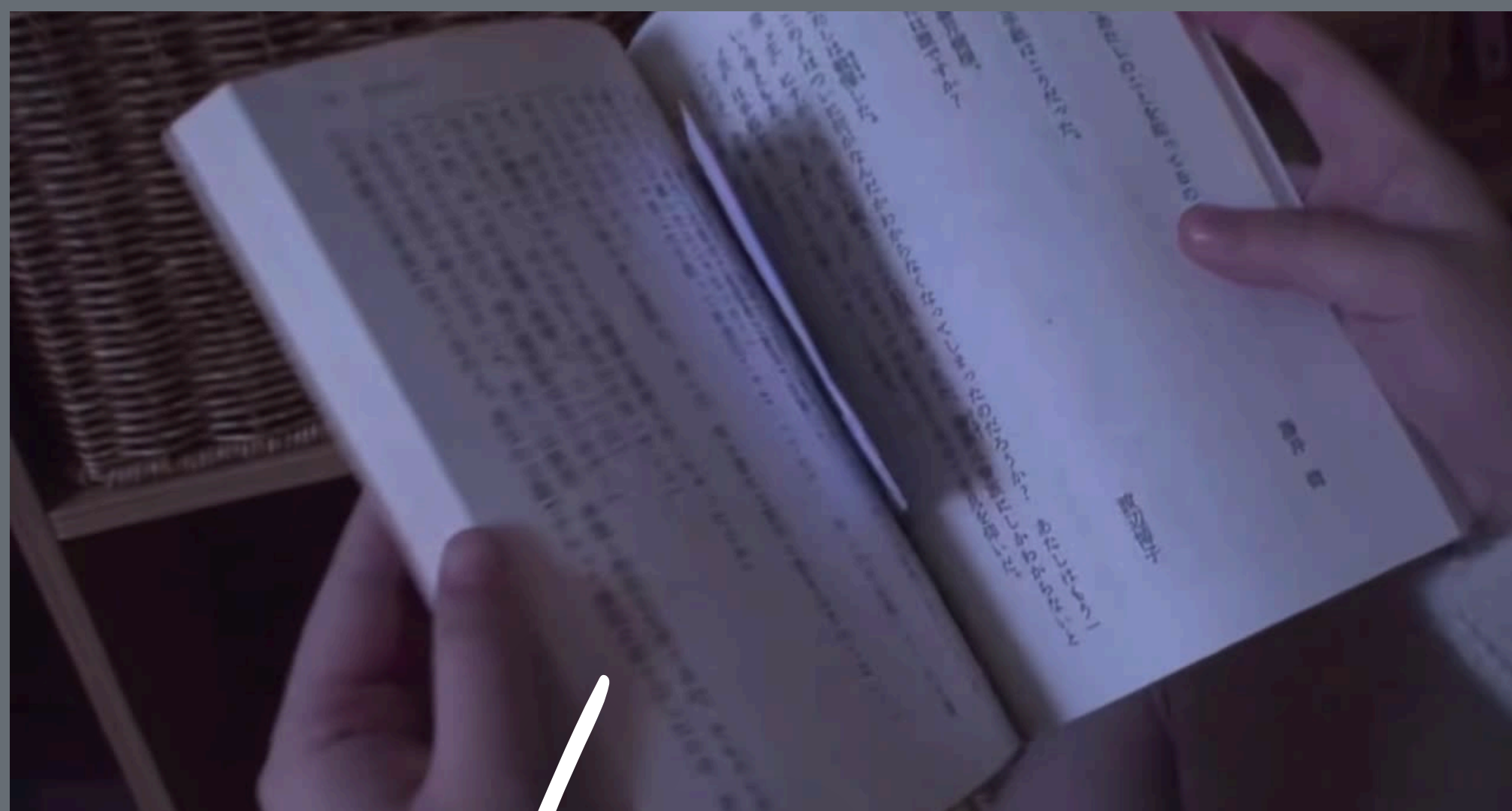
LOVE LETTER

 **VM244-03**  
PRODUCTIONS



setting

---



Love  
Letter

LOOK BOOK



08



## HIROKO'S HOME







## PAST SCHOOL







# RED MAILBOX







# TONE

- Melancholic but hopeful
- Intimate and quiet
- Nostalgic

- Minimalist and poetic
- Romantic but subtle
- Dreamlike



GRIEF AND  
HEALING

UNSPOKEN  
FEELINGS

MEMORY AND  
REFLECTION

MISSED  
OPPORTUNITIES

*themes*

LOVE BEYOND  
ROMANCE

IDENTITY AND  
SELF-DISCOVERY

THE FRAGILITY  
OF MEMORY



# CHARACTERS

LOVE LETTER

 VM244-03  
PRODUCTIONS



REFERENCE: MIHO NAKAYAMA  
*love letter* (1995)



A grieving woman still grappling with the death of her fiancé, Itsuki Fujii. The series follows her journey through the complex emotions of grief, memory, and rediscovery. Each letter she sends and receives helps her heal, but it also brings new questions about her past relationship.

## HIROKO WATANABE

## ITSUKI FUJII (FEMALE)

A reserved woman who finds herself unexpectedly drawn into Hiroko's life through the letters. Her namesake connection with Hiroko's late fiancé opens doors to memories of her own youth, and she begins to reflect on her own relationships and regrets.

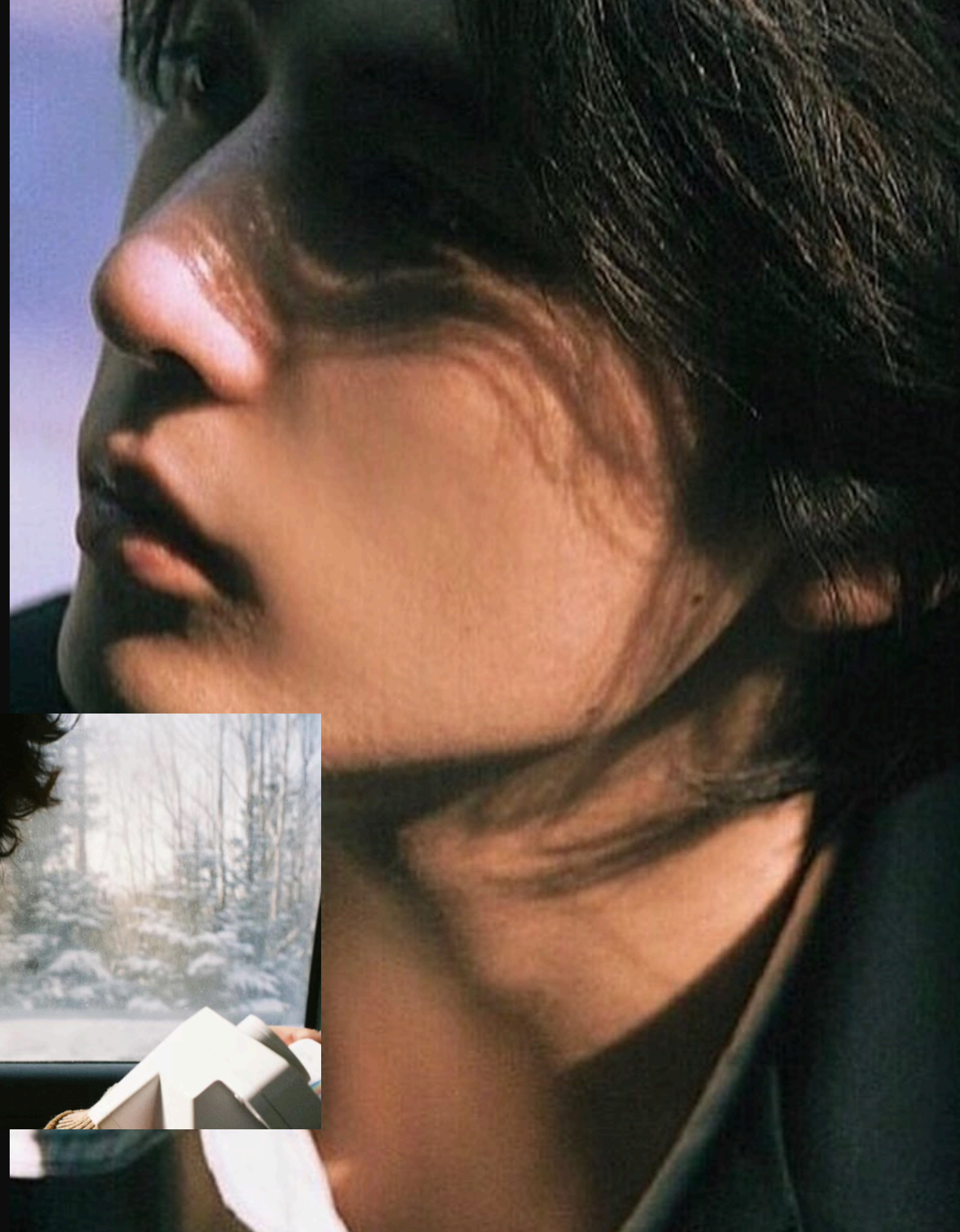
- THE SAME ACTOR PLAYING TWO ROLES



# ITSUKI FUJII (MALE)

Seen only in flashbacks and memories, the male Itsuki is the connection between the two women. His life, seen through the eyes of both Hiroko and the female Itsuki, provides a layered understanding of who he really was.

REFERENCE: TAKASHI KASHIWABARA  
*love letter* (1995)





# WHY NOW



## Resurgence of Nostalgia

In a world of instant communication, the series taps into a sense of nostalgia for simpler, slower, and more meaningful exchanges. Letters, in particular, symbolize a form of communication that is intimate, thoughtful, and enduring.

## Exploring Grief in Modern Contexts

With many people experiencing personal loss in recent years, especially post-pandemic, stories that deal with grief and healing resonate more than ever. The way Hiroko and Itsuki navigate their emotions feels timely, as audiences seek stories that acknowledge both the pain of loss and the possibility of hope.

## Strong Female Characters

The show centers on two women who are emotionally complex, multi-dimensional, and reflective. Their internal journeys offer a rich exploration of womanhood, connection, and identity, aligning with the broader movement of more female-driven narratives in media.

**VM244-03**  
LOOK BOOK

**CONTACT ME**  
Lirui Gong 宫礼蕊

# CONTACT INFO

**MOBILE**

+1 978-729-9215 (U.S)  
+86 15924412728 (CHINA)

**EMAIL**

[gonglirui0620@gmail.com](mailto:gonglirui0620@gmail.com)