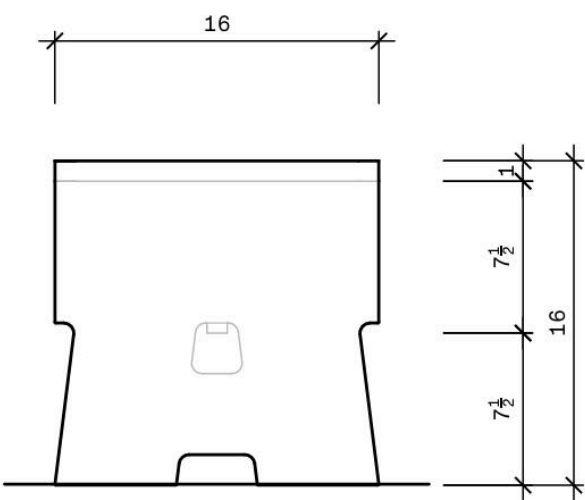
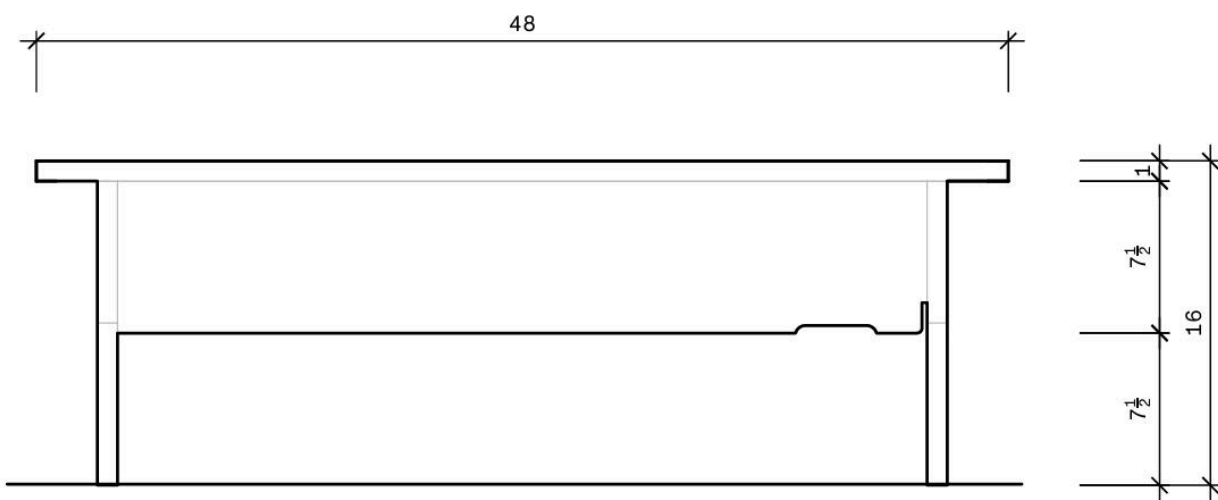
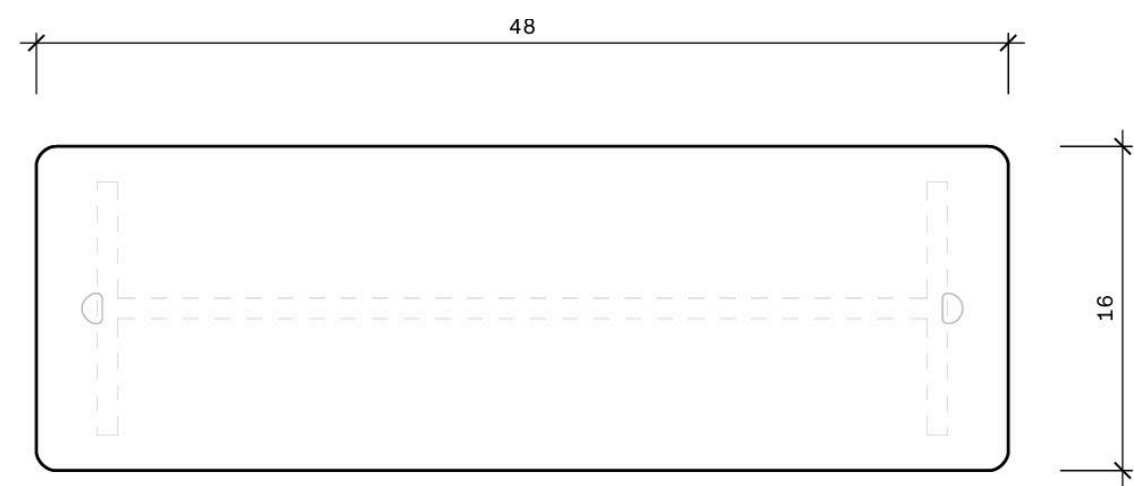


RS BENCH



DETAILS: The RS family are a series of thoughtfully designed, lightweight flat-pack furniture. Each piece is constructed using a tensile system of machined plywood panels and ratchet straps, providing exceptional sturdiness and rigidity. This system allows for effortless assembly and disassembly, making the RS family ideal pieces for a dynamic lifestyle.

MATERIAL: Radiata pine plywood, ratchet straps
FINISH: Buffed hardwax oil
DIMENSIONS: W: 48"
D: 16"
H: 16"