

kapwa

a core indigenous Filipino psychology that is
“a recognition of shared identity, an inner self shared
with others” (V. Enriquez, 2004)

projects

by juke jose

contents

1 a place to create new paths

Migrant Community Center, pg 3

3 time has brought us together

Art Installation, pg. 12

4 an act of mutual understanding

Community Centered Public Mural, pg. 15

5 a space with alternative dimensions

Gallery & Shop, pg. 16

2 a home shared with others

Collective Affordable Housing, pg. 7

6 some other works

Organizational & Professional
Work, pg.19

1 a place to create new paths

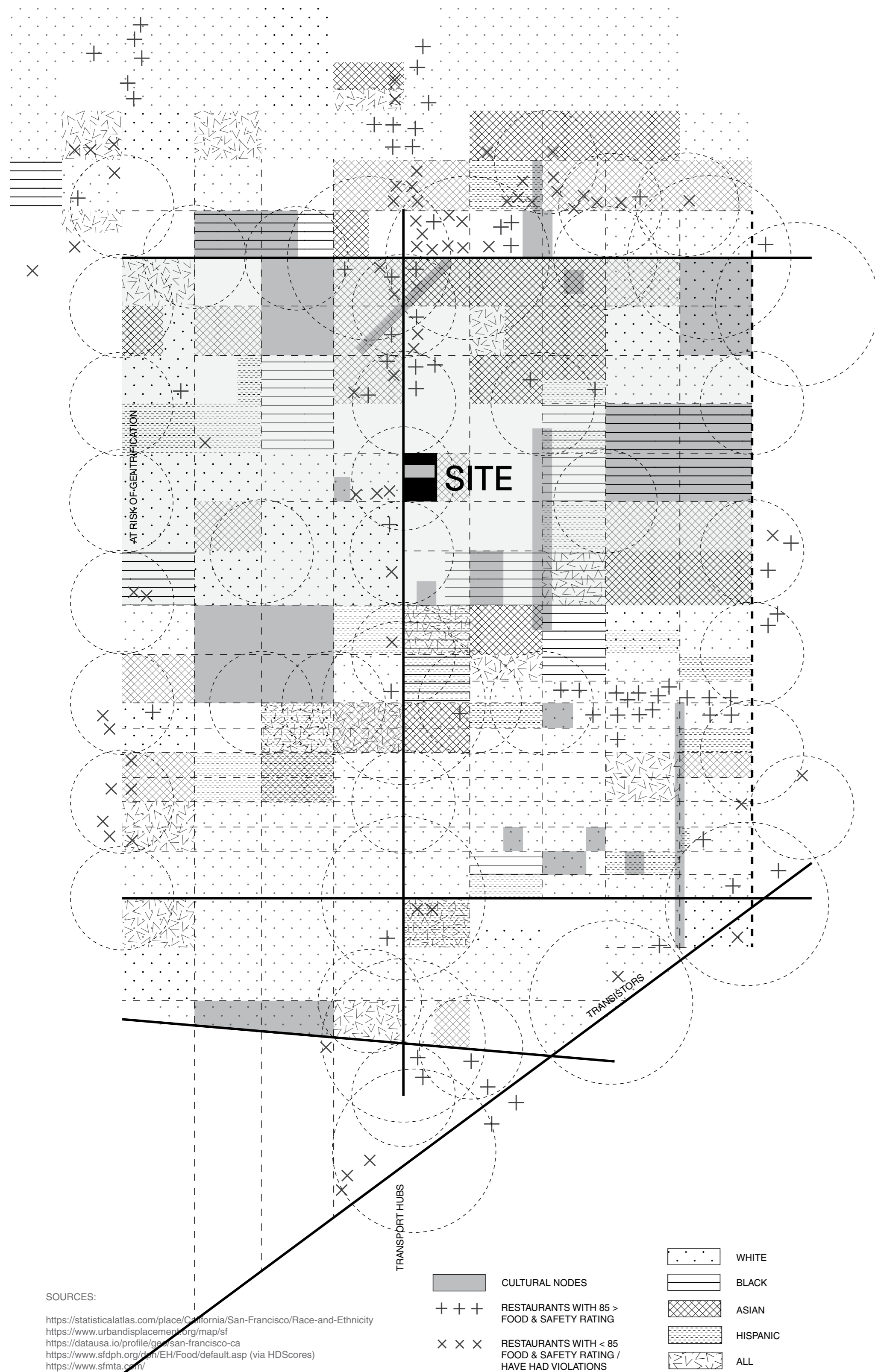
Migrant Community Center

The Migrant Community Center is a place that guides immigrants and refugees to write a new chapter of their lives by complexifying their shifting identities in the US. The center creates a platform for migrants where they can get support in the formal and informal immigration process and other areas of cross-acculturation including cultural exchange and language as well as finding housing and employment while building relationships and connections in the local communities of San Francisco.

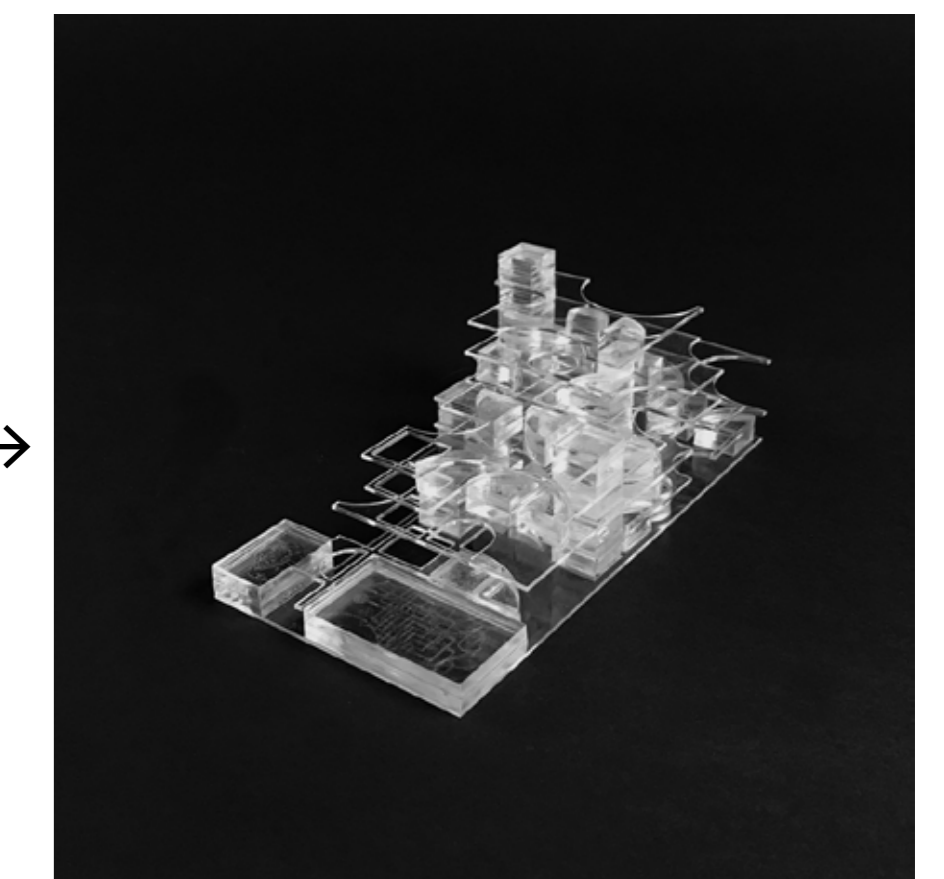
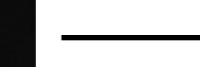
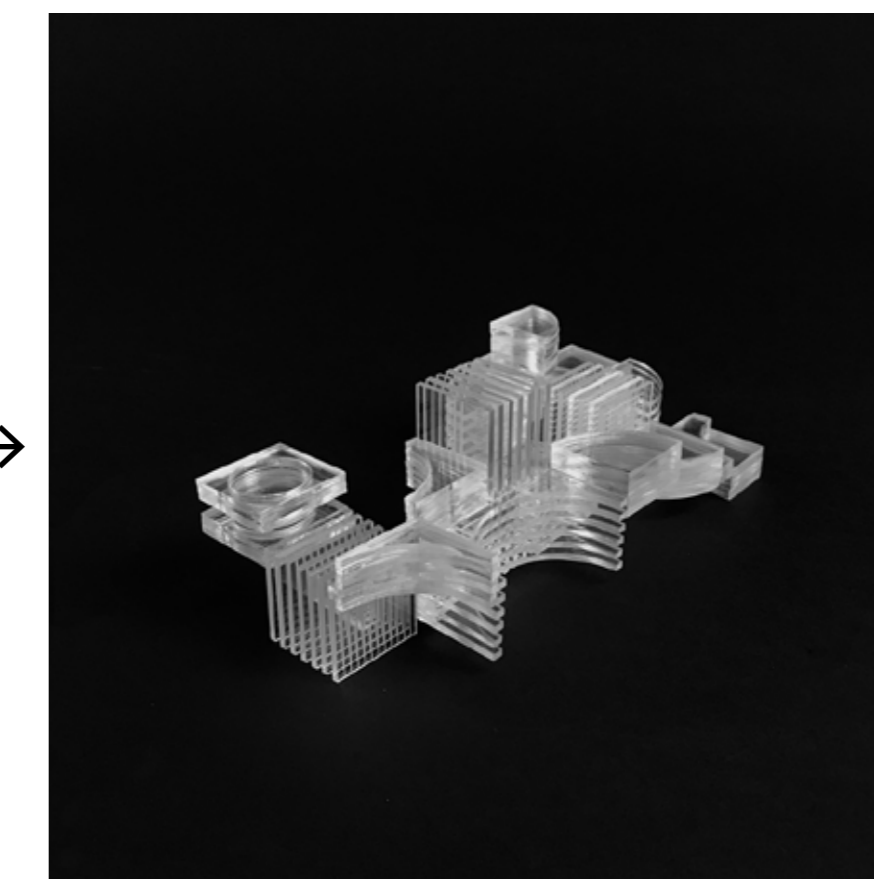
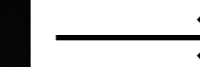
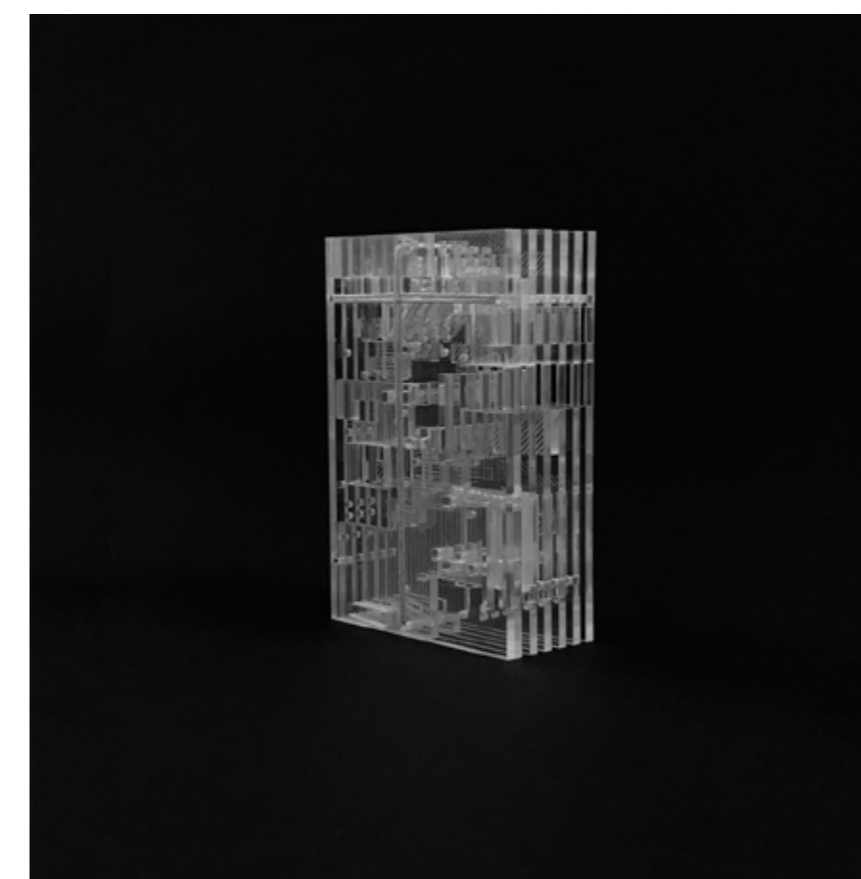
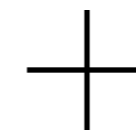
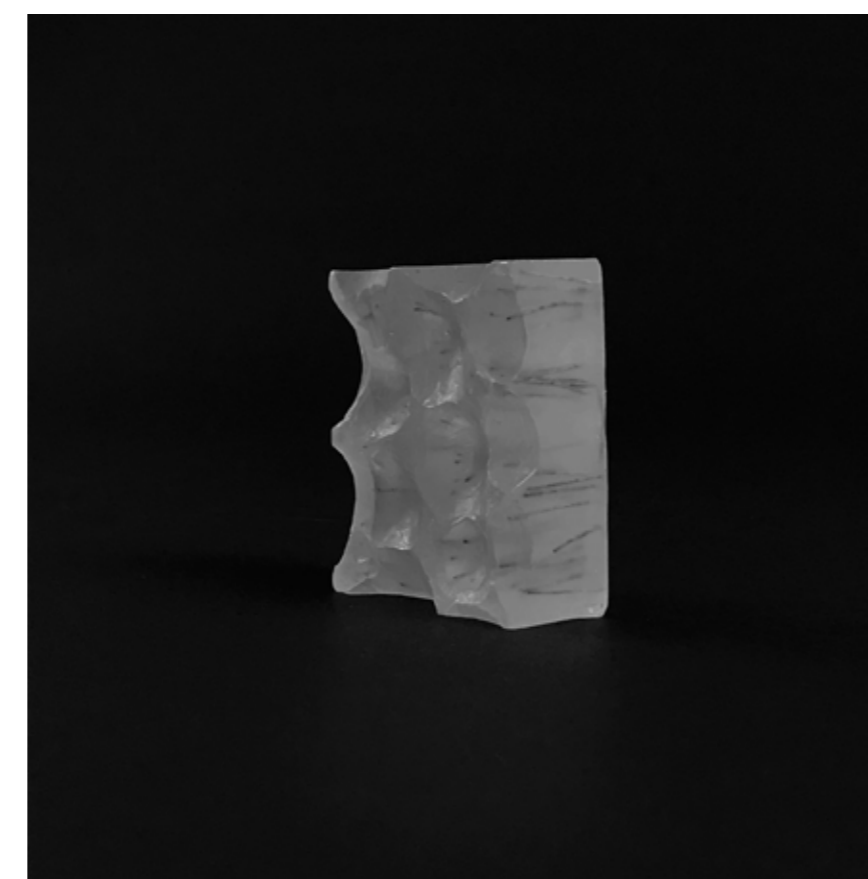
Through the use of a spatial patchwork, the migration process of assembling a new way of life is reflected. The architectural language of layered transparencies across the architectural form provides personal and visual connections between spaces. Curved planes generate intimate spaces carved out along the periphery of the site embracing and leading users as they meander through the building. The gray and soft spaces become multi-scale plazas encouraging assembly and congregation giving people agency while weaving interconnected and multigenerational relationships.

Date	2019	Type	Academic
Location	San Francisco, CA	Instructor	Karen Seong, Mei Liu





Site Mapping



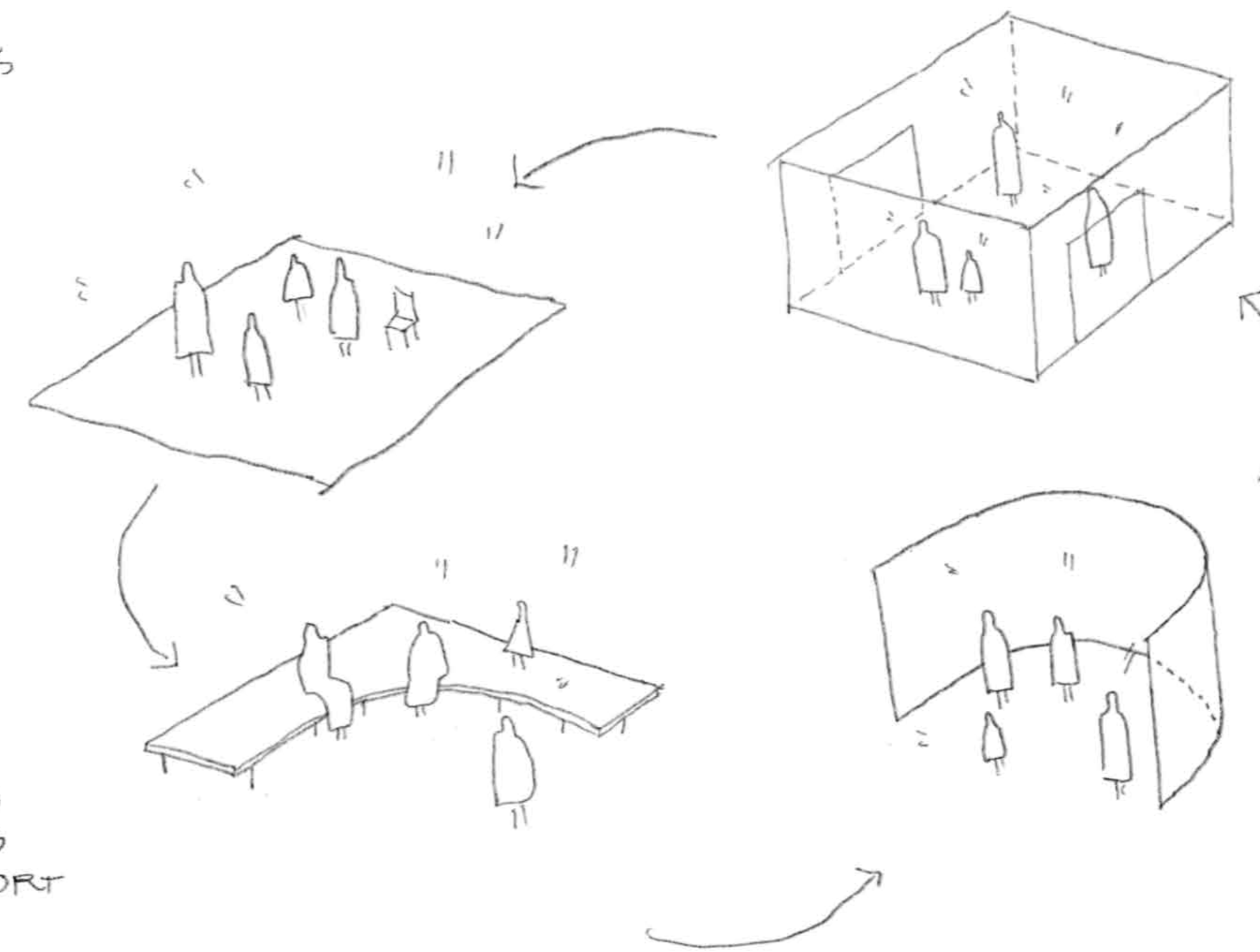
Site Mapping —

Research started mapping the site with racial and ethnic demographics and their access to healthy food and cultural institutions. The map is used as a generative tool to create architectural language: layering, patchwork, and carving.

Architectural Language Models —

The language created in Site Mapping is extracted into distinct elements and is translated to physical models such as layered patchwork acrylic and carved wax models. These are further developed incorporating scale and site context.

OPEN SPACES
 MULTI-USE
 - ACTIVITIES
 - ASSEMBLY



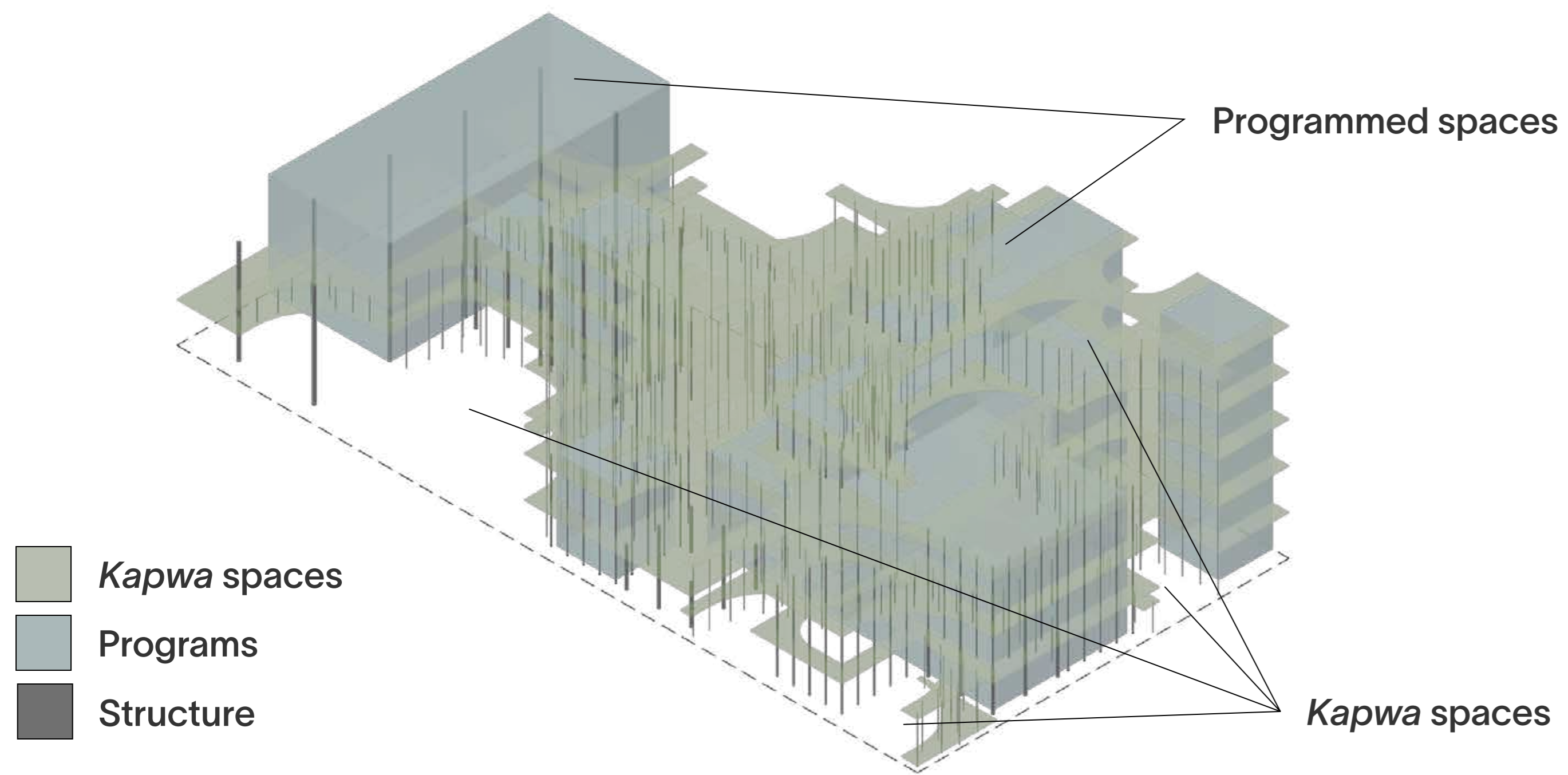
HARD SPACES
 FORMAL PROGRAMS
 - NON PROFIT
 - EDUCATION
 - GOV'T UNIT

GRAY SPACES
 NON-PROGRAMS
 - CONVERSATIONS
 - REST & COMFORT
 - RELATIONSHIP BUILDING

SOFT SPACES
 INFORMAL PROGRAMS
 - RESOURCES FROM COMMUNITY
 - MUTUAL AID

Developing Design —

The architectural languages of patchwork, layering, and carving are translated to spaces (open, gray, soft, hard) along with programs.



Structure like a forest —

Column density and slab heights change based on programs and intimacies. Thin columns create informality and larger stable columns create stability. The structural design is used to create nuanced spatial compositions emphasizing the existence of diverse experiences and expressions.

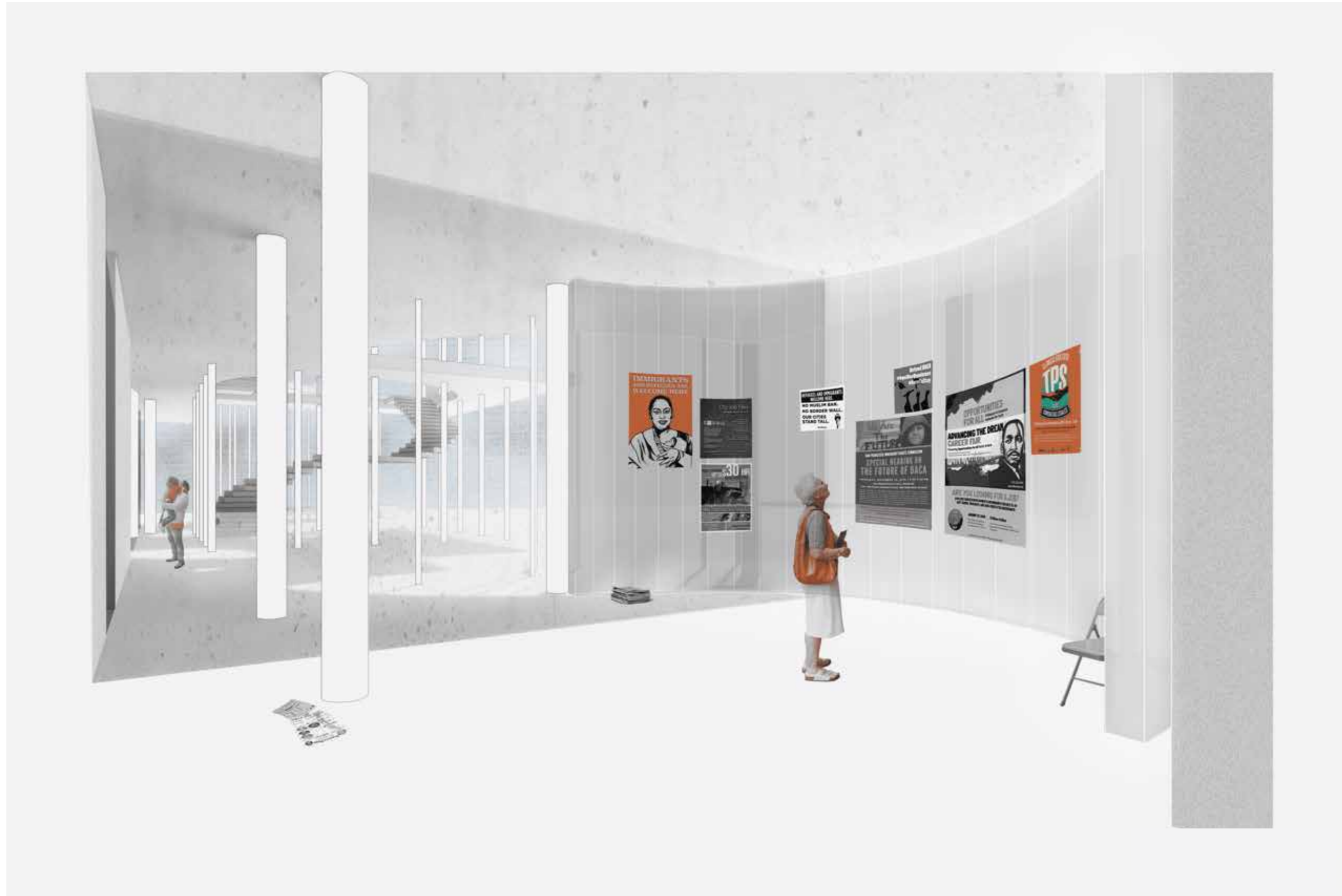


Structure Detail Model



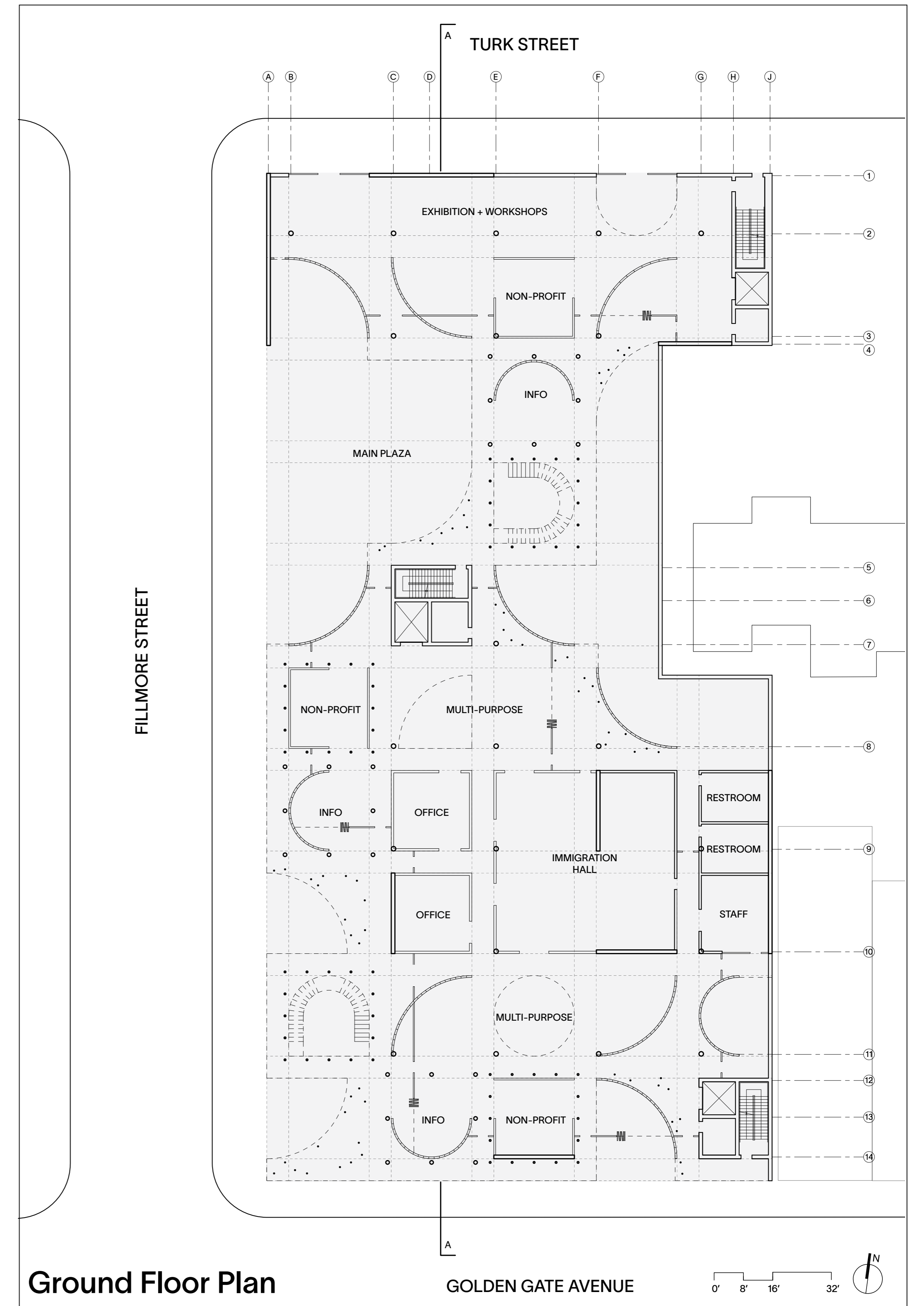
Interstitial spaces cultivating *kapwa* —

The assemblage of open human scale spaces throughout the building invite people to form communities in all shapes and sizes. The vertical divisions change from opaque to a range of transparencies creating different levels of intimacies, extrapolating on patchwork of spaces reflecting the migration process of assembling a new way of life.



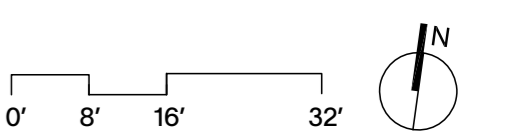
Spaces paving new paths —

The language of layered transparency across the spatial patchwork provides personal and visual connections between spaces. Curved planes generate intimate spaces carved out from the layers of programs while embracing users as they meander through the building promoting *kapwa* relationships.



Ground Floor Plan

GOLDEN GATE AVENUE



2 a home shared with others

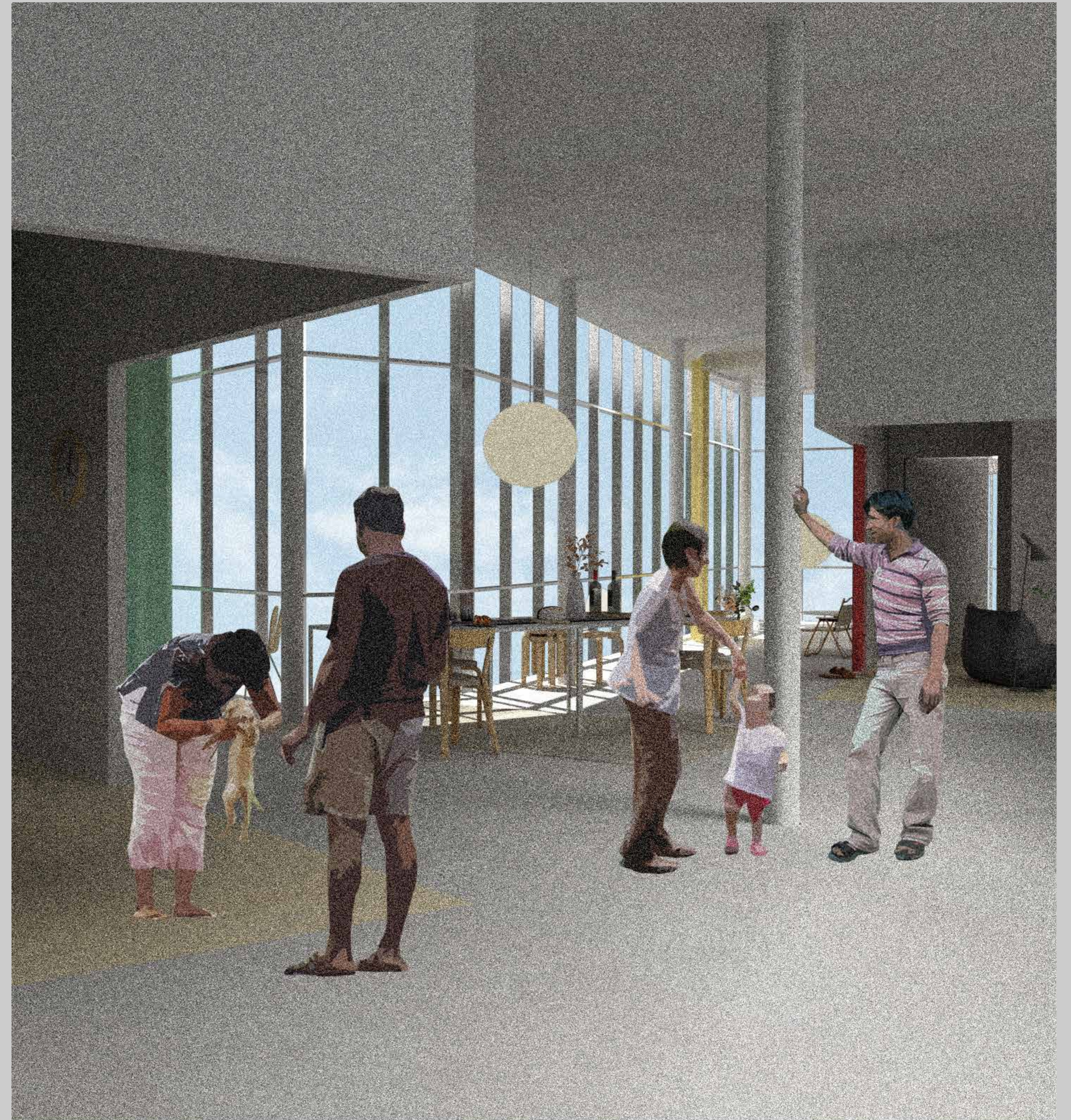
Collective Affordable Housing

America is built on individualism and at the height of human and natural catastrophes, mutual aid and community care exist outside our closed doors. How can we build our environment based on interconnectedness and care instead of exclusion and separation? How can we find a middle ground where people can be themselves and thrive in a community?

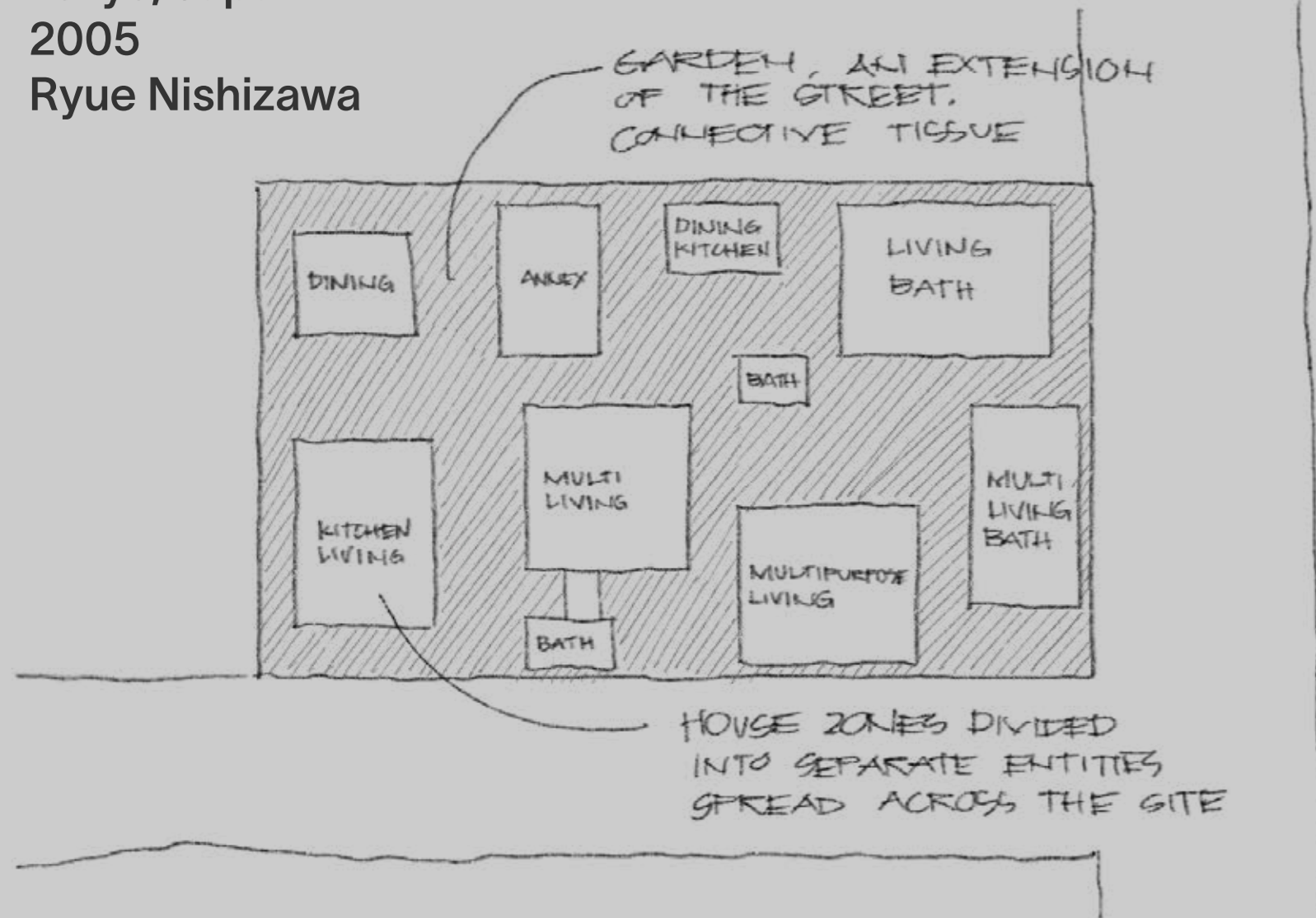
The project tackles the American landscape through the lens of *kapwa*, a Filipino psychology that is “a recognition of shared identity, an inner self shared with others,” (V. Enriquez, 2004) to design a collective housing at the heart of San Francisco. The building incorporates openness and collective care into our daily lives and inside our homes by bringing our selves closer to each other.

Date 2021
Location San Francisco, CA

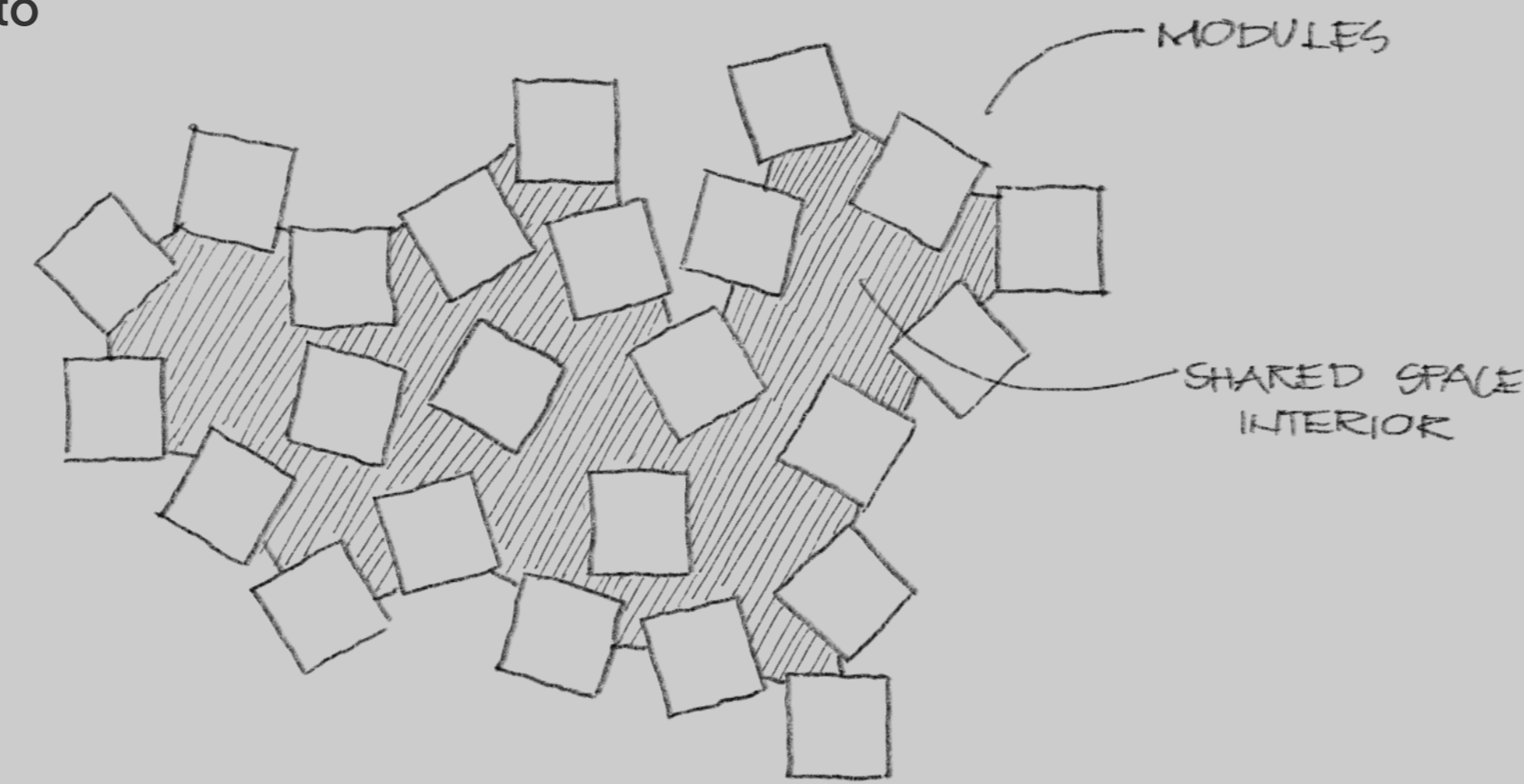
Type Academic
Instructor Mini Chu, Philip Ra



Moriyama House
Tokyo, Japan
2005
Ryue Nishizawa

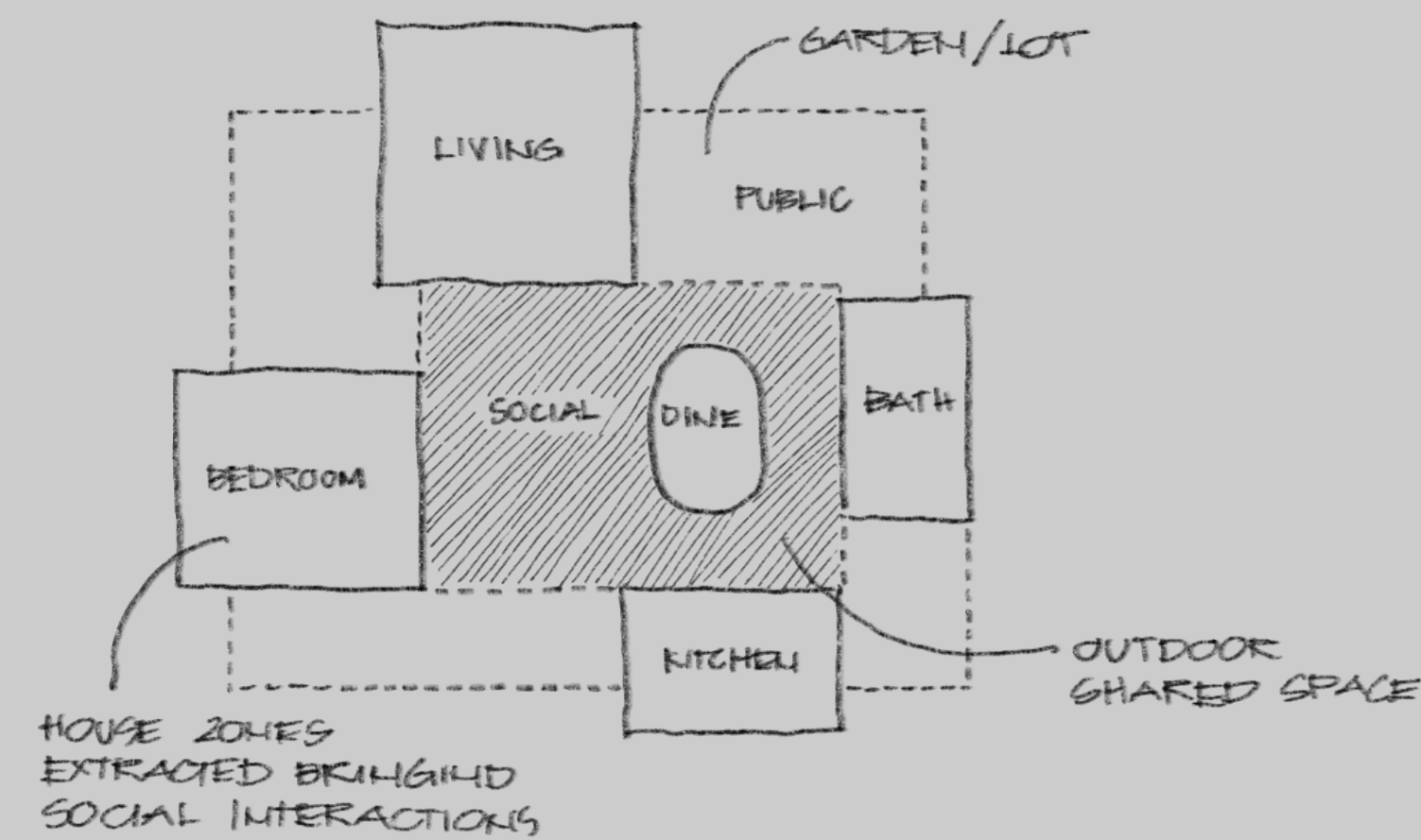
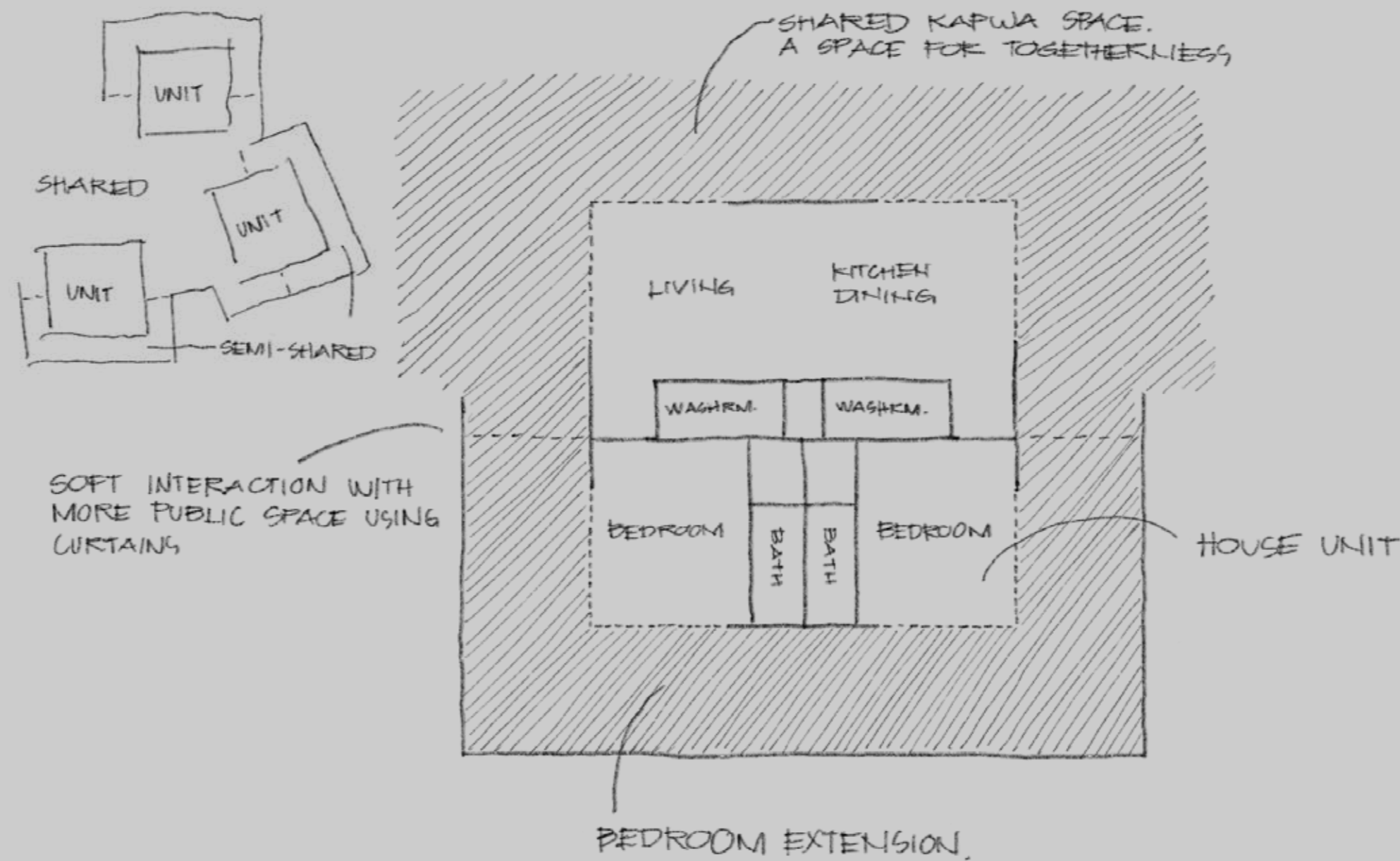


Children's Center for Psychiatric Evaluation
Aichi, Japan
2006
Sou Fujimoto



Apan Housing
Hidalgo, Mexico
2017 - 2018
Tatiana Bilbao

Design Concept for
Collective Housing



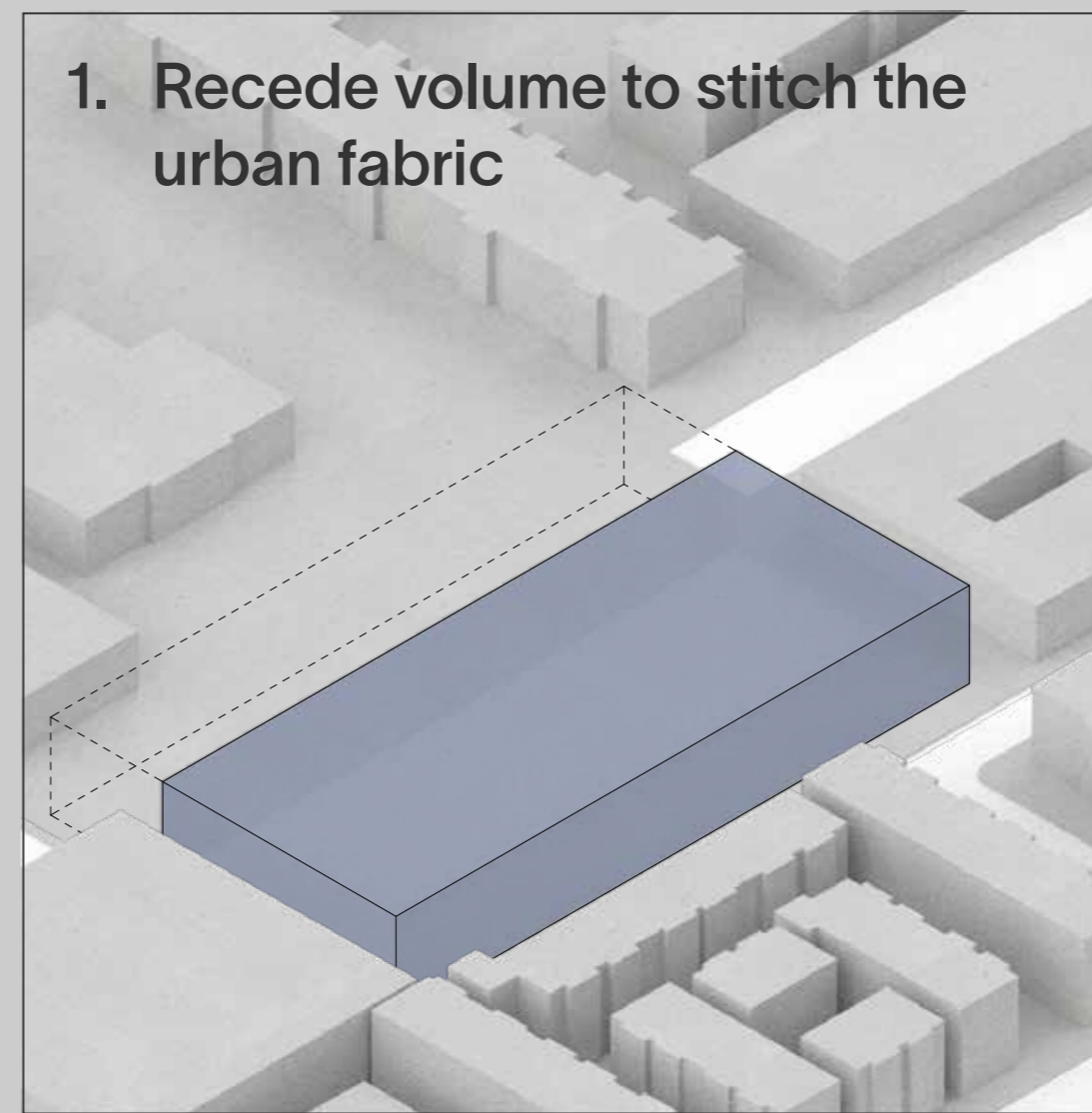
Precedent Studies —

The studies showed projects in multiple scales how the idea of interconnection can be executed. Modules and units are created, purposefully separated while emphasizing interconnectedness through space. Architecturally defining a coming together.

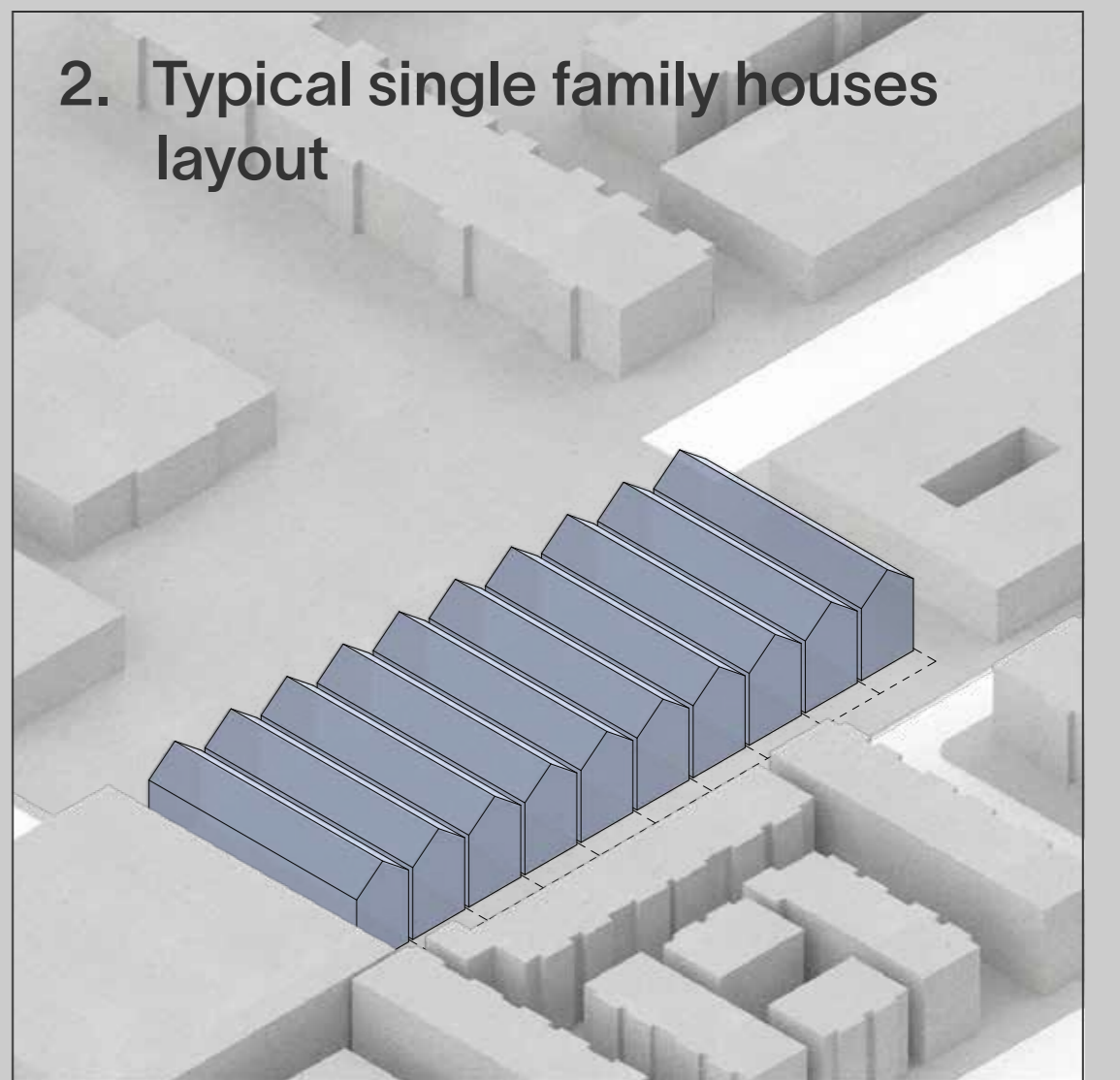
Massing Design —

The design took cues from the precedents incorporating the shared space as an interior while covering the entire mass in glass. The transparency brings the street closer to the space creating a graduation of privacy.

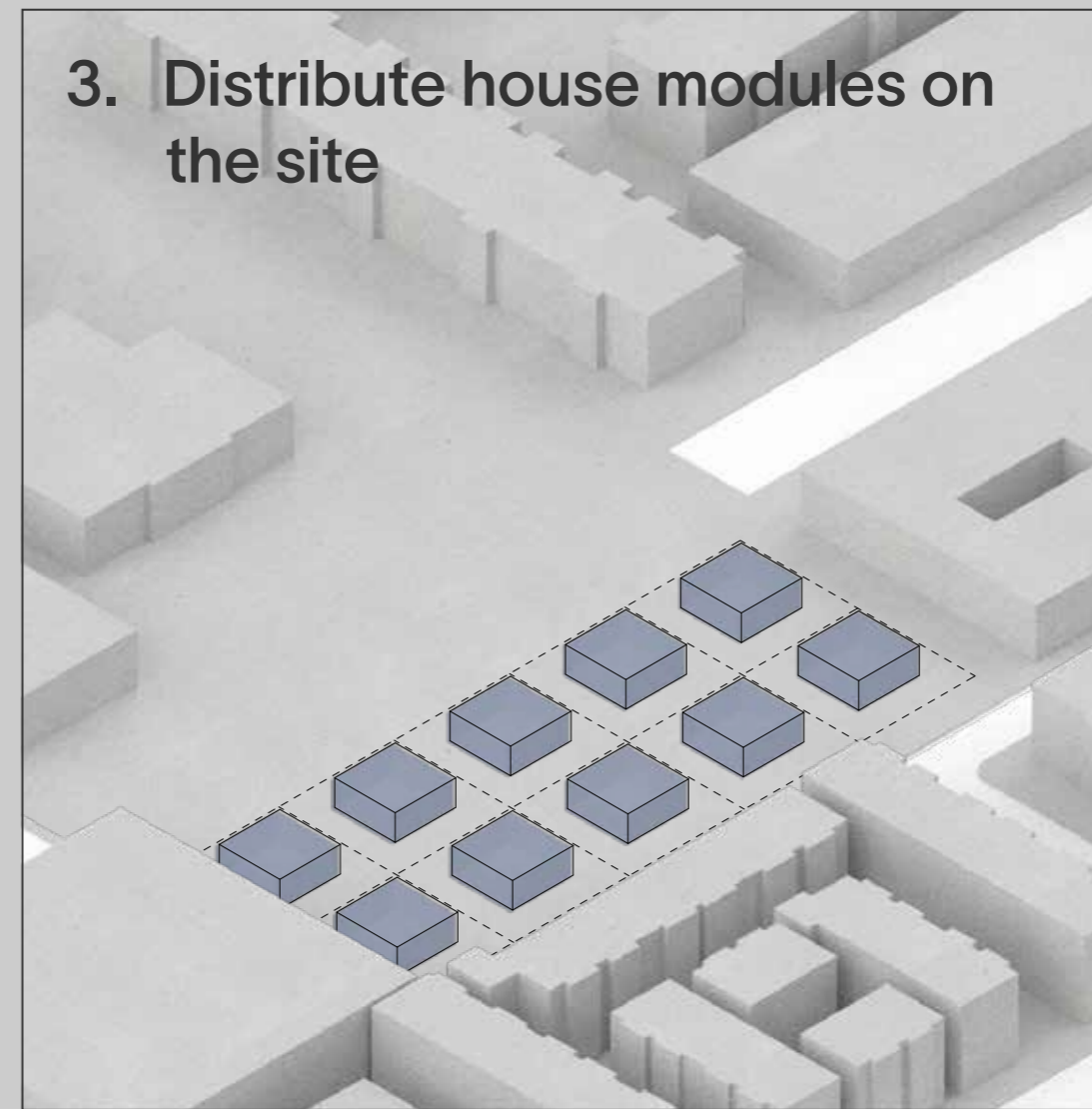
1. Recede volume to stitch the urban fabric



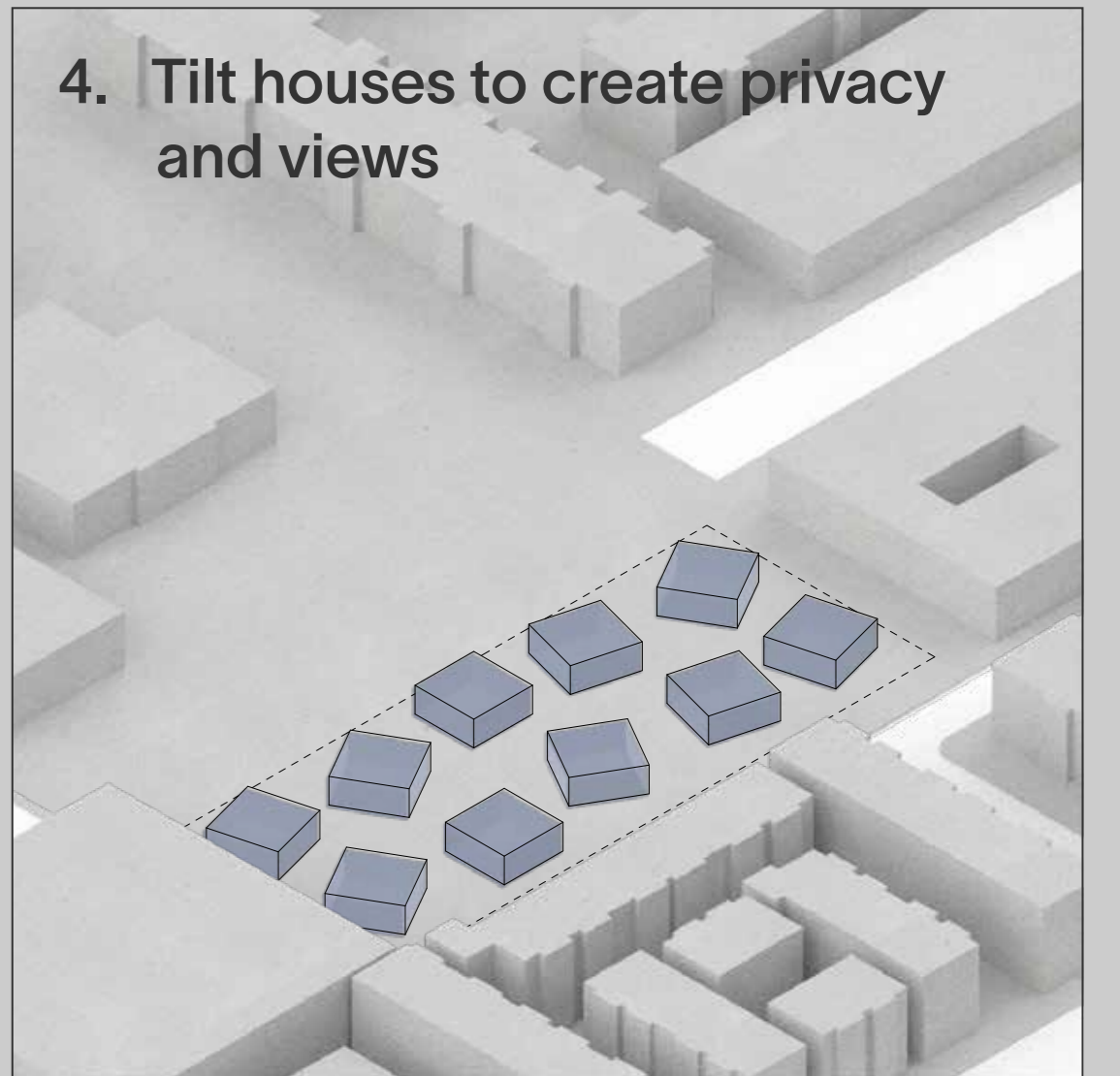
2. Typical single family houses layout



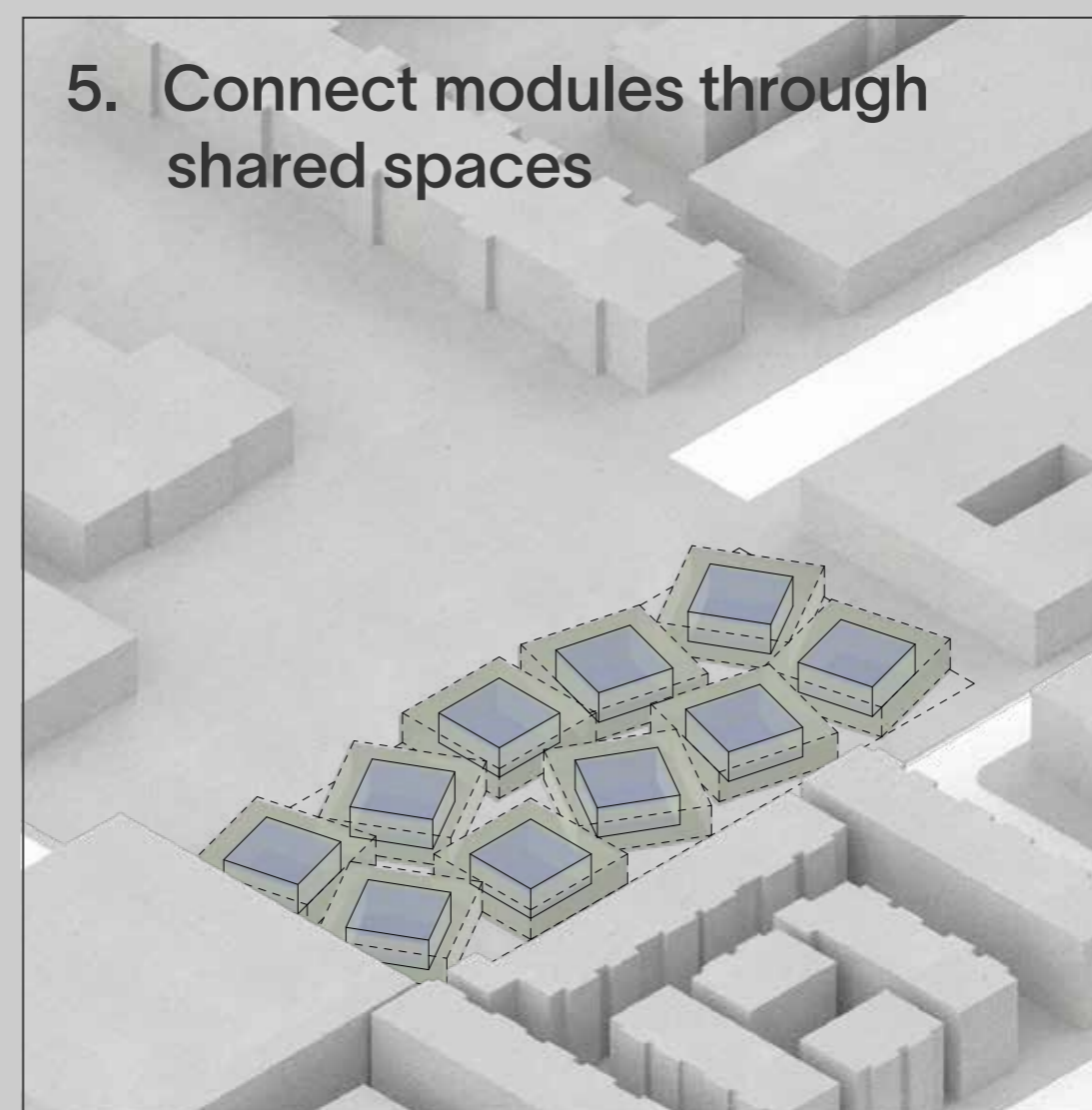
3. Distribute house modules on the site



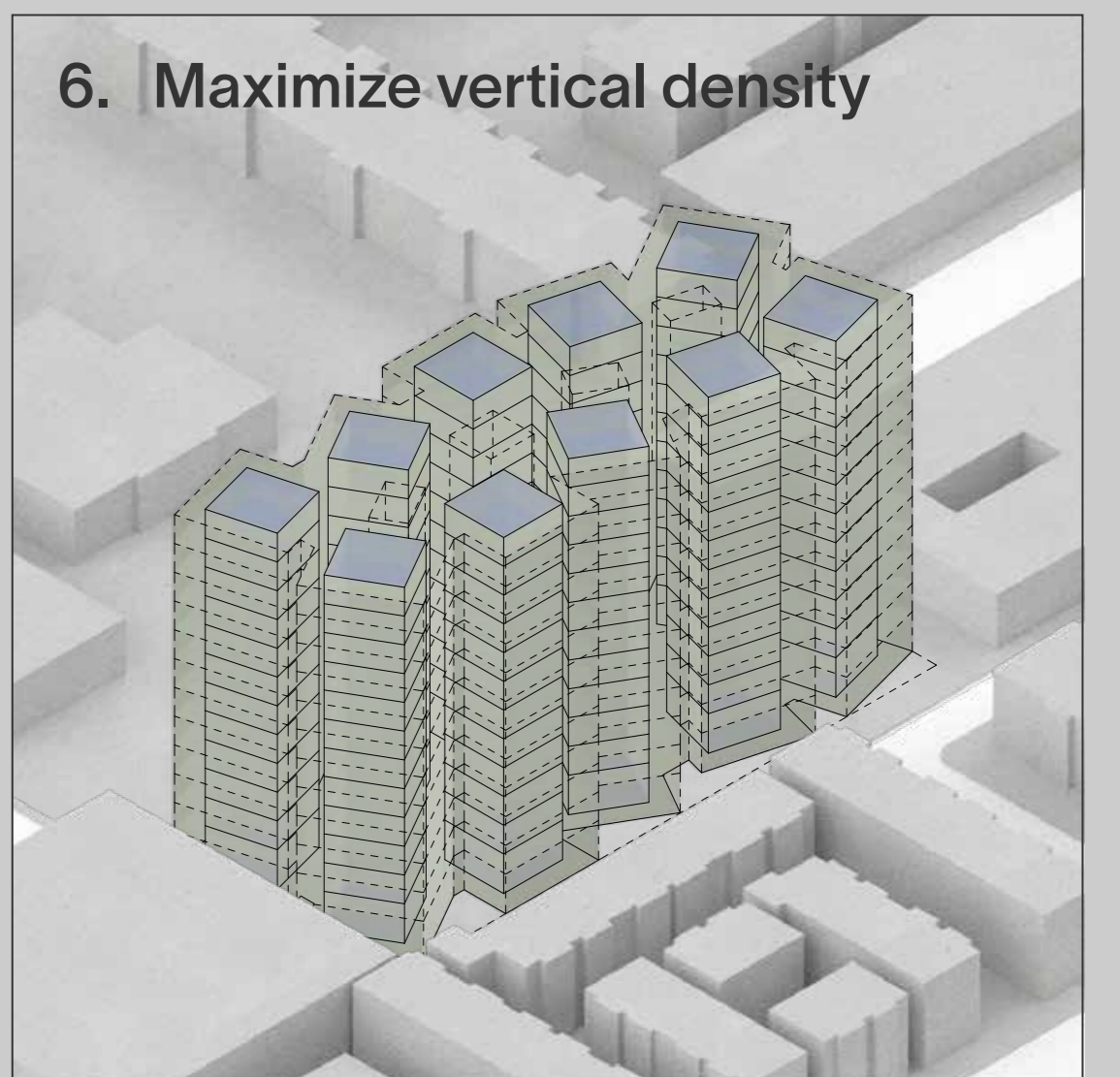
4. Tilt houses to create privacy and views



5. Connect modules through shared spaces



6. Maximize vertical density



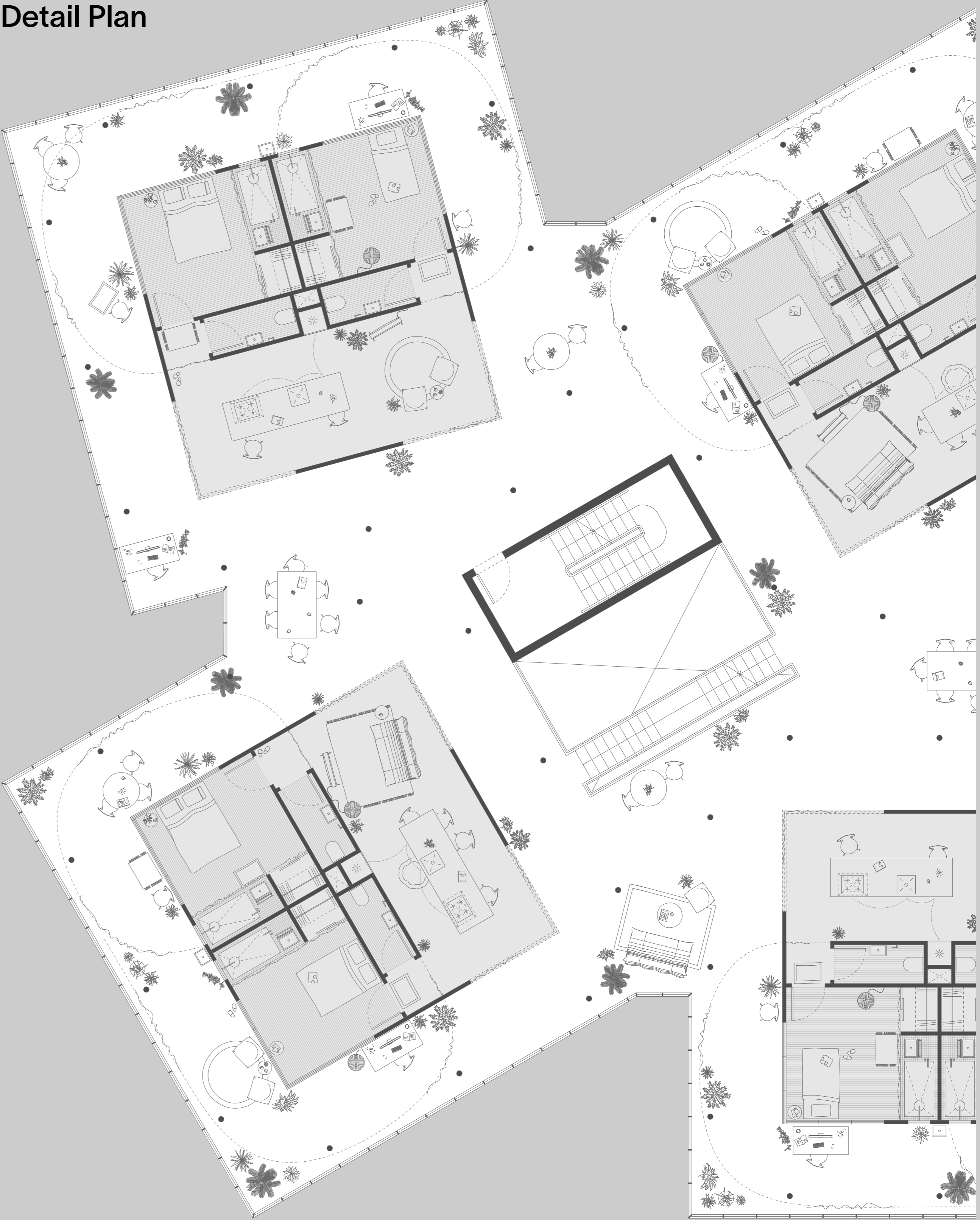
Coming together in kapwa spaces —

The plan maximizes the site distributing 10 modules on each floor. The ground floor uses modules that interact with the neighborhood as public communal spaces stitching the disconnected streets through pedestrian friendly paths. The volume recedes from the site connecting the urban fabric, opening the site's northern part, a formerly closed dead-end street as a slow street plaza.



Ground Floor Plan

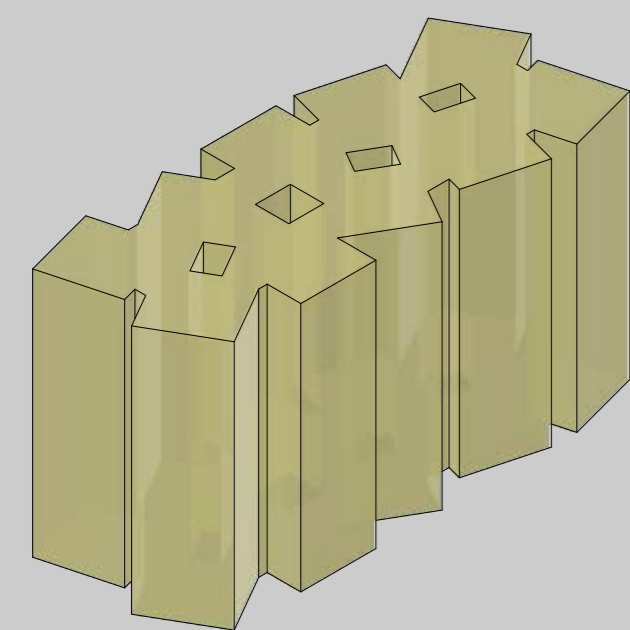
Detail Plan



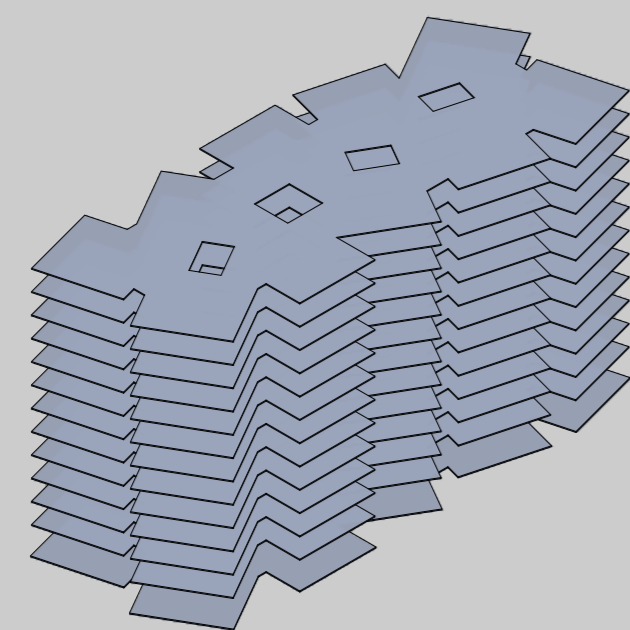
Homes connected by *kapwa* spaces



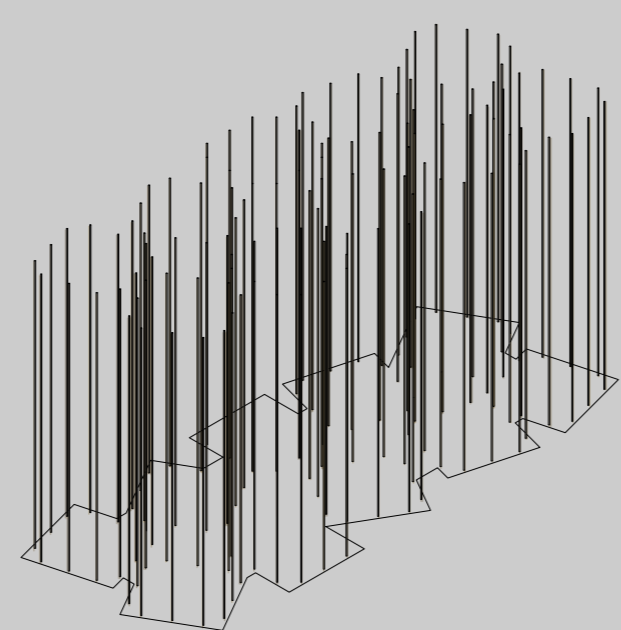
Building on site



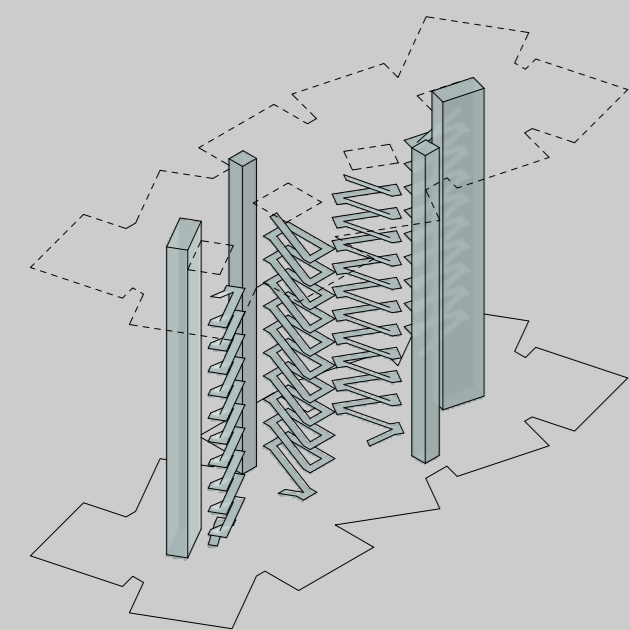
Massing



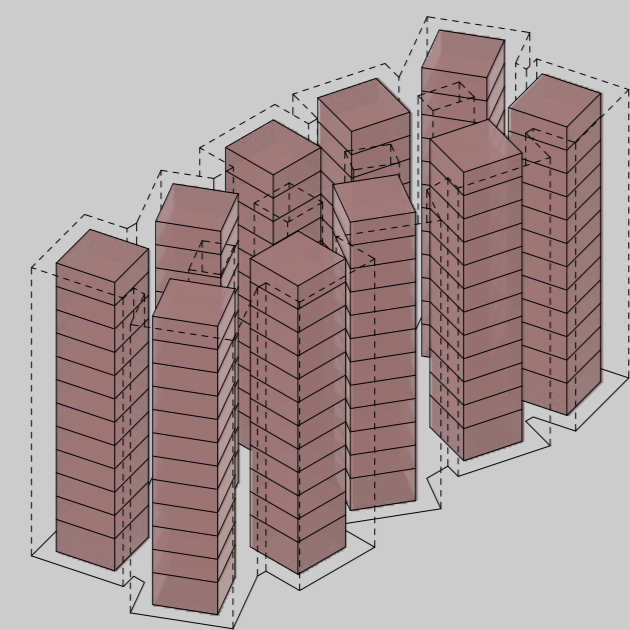
Floor plates



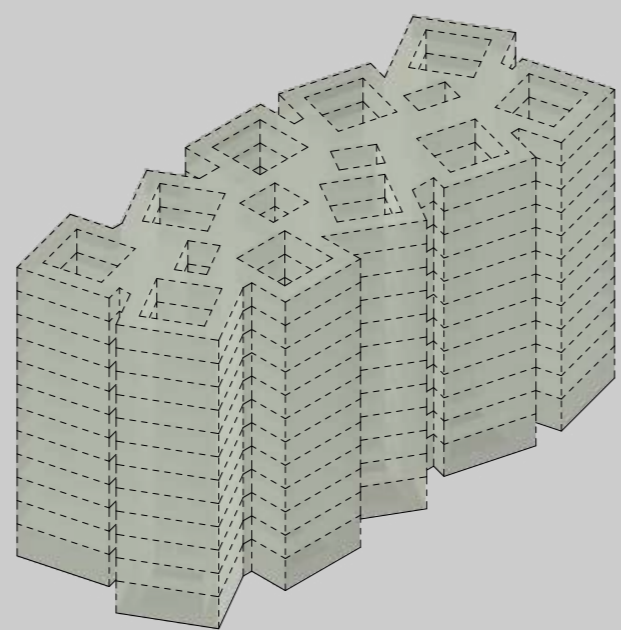
Structure



Circulation core



Home modules



Kapwa spaces

Fourth Floor
+ 40' 6"

Third Floor
+ 28' 6"

Second Floor
+ 16' 6"

Ground Floor
+ 0' 6"



Detail Section

5'

10'

20'

Home and *kapwa* spaces —



3 time has brought us together

Art Installation

A chair is a piece of furniture that lies on the mundane part of our everyday life. It's a piece that bears our spirits and has become an embodiment of our interconnected beings. Whether we are at our family's dining table, a doctor's waiting room, or sitting on a bus with strangers, chairs carry us. To be a chair is to be marginal, but they are witnesses of our relationships, personal histories, worries, and fleeting moments. It is within these moments that time has brought us together.

The idea of an interconnected chair emerged from a meditation of a core Filipino psychology of *kapwa*, that is "a recognition of shared identity, an inner self shared with others" (Enriquez 2004) during the height of COVID-19 and global lockdowns. The piece responds to the physical barriers implemented during the pandemic and how each one of us are weaved through space and time no matter how apart we are.

Date
Type

2021–2023
Installation

Media

Wood, steel,
found objects

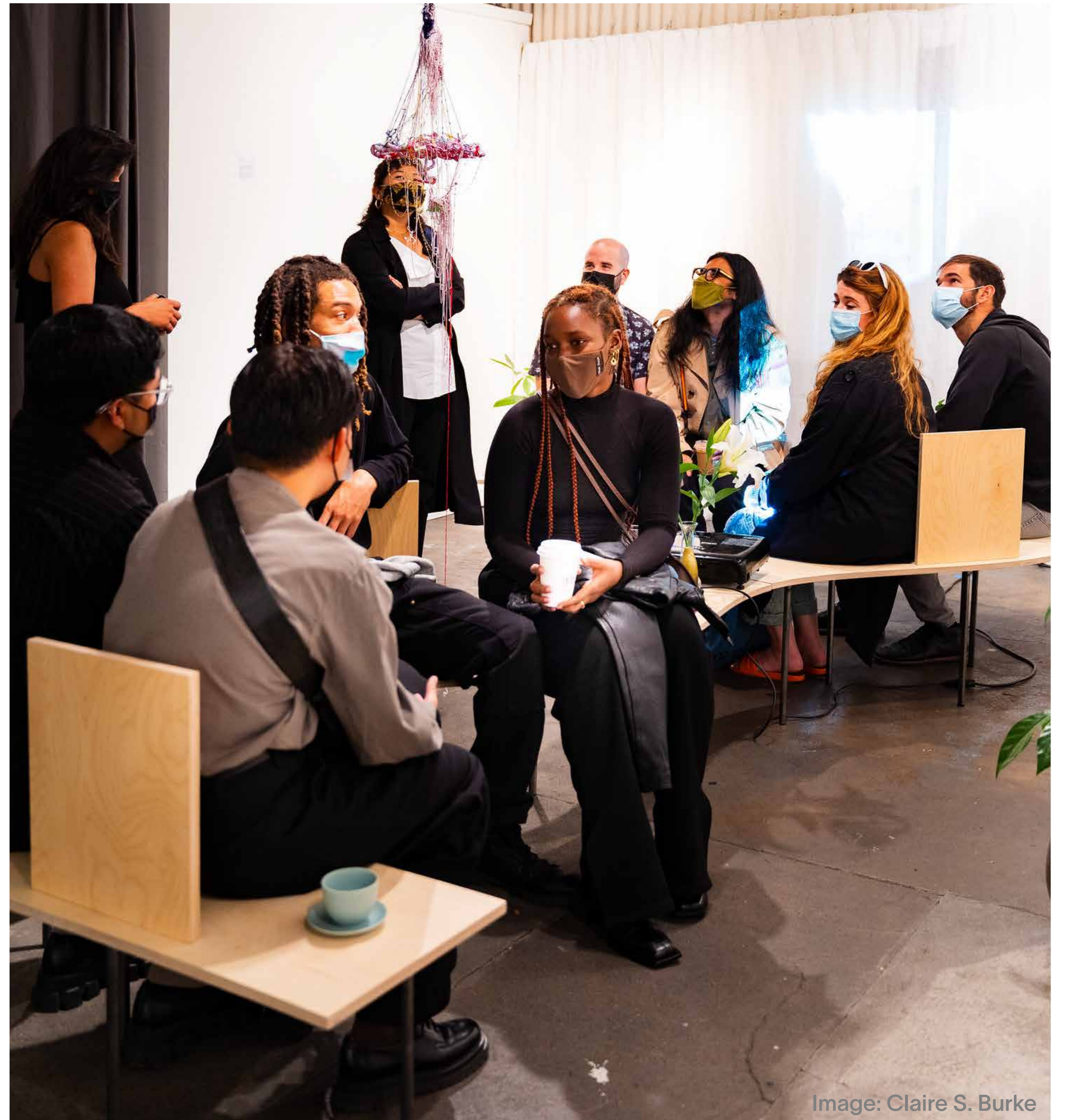
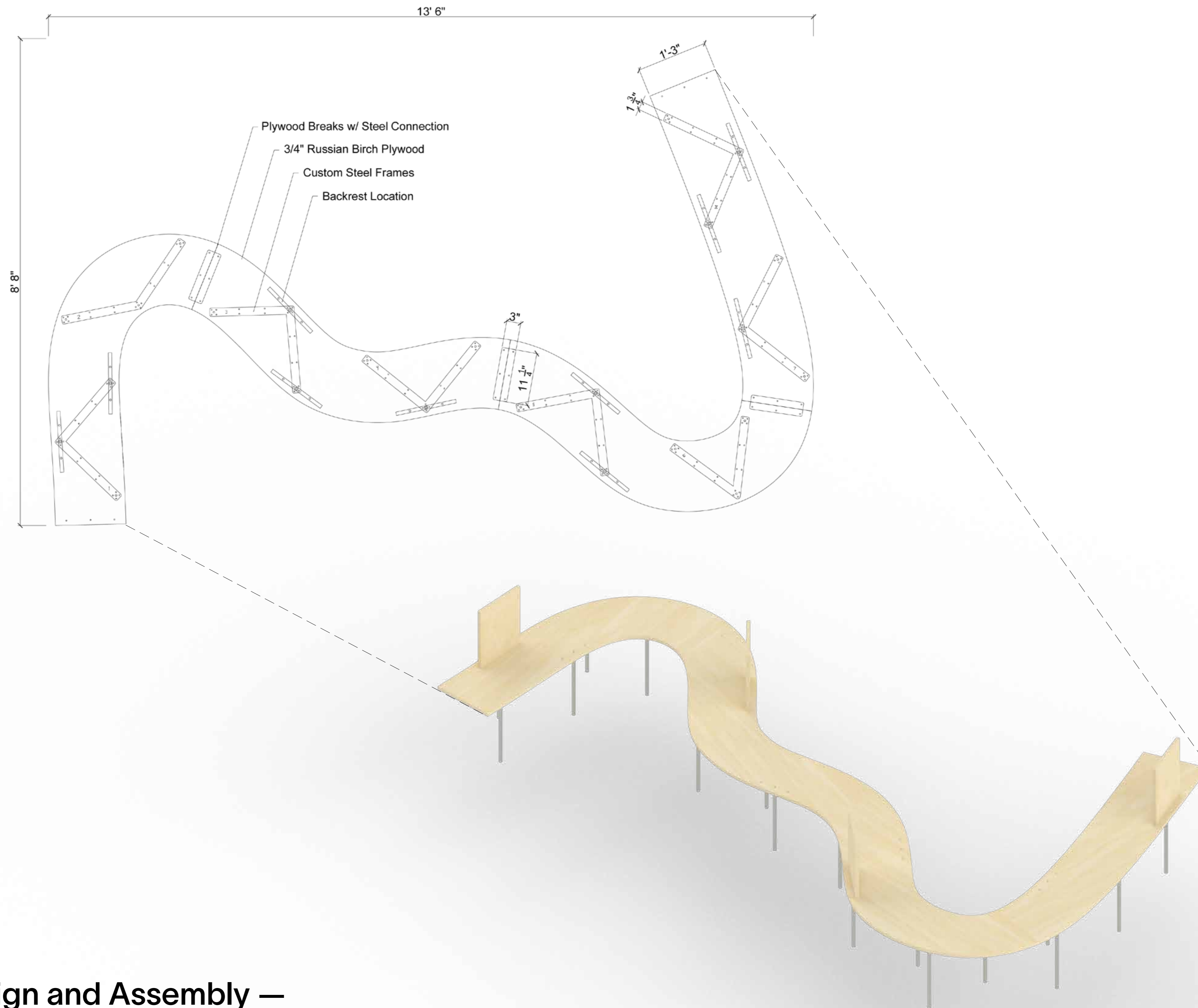


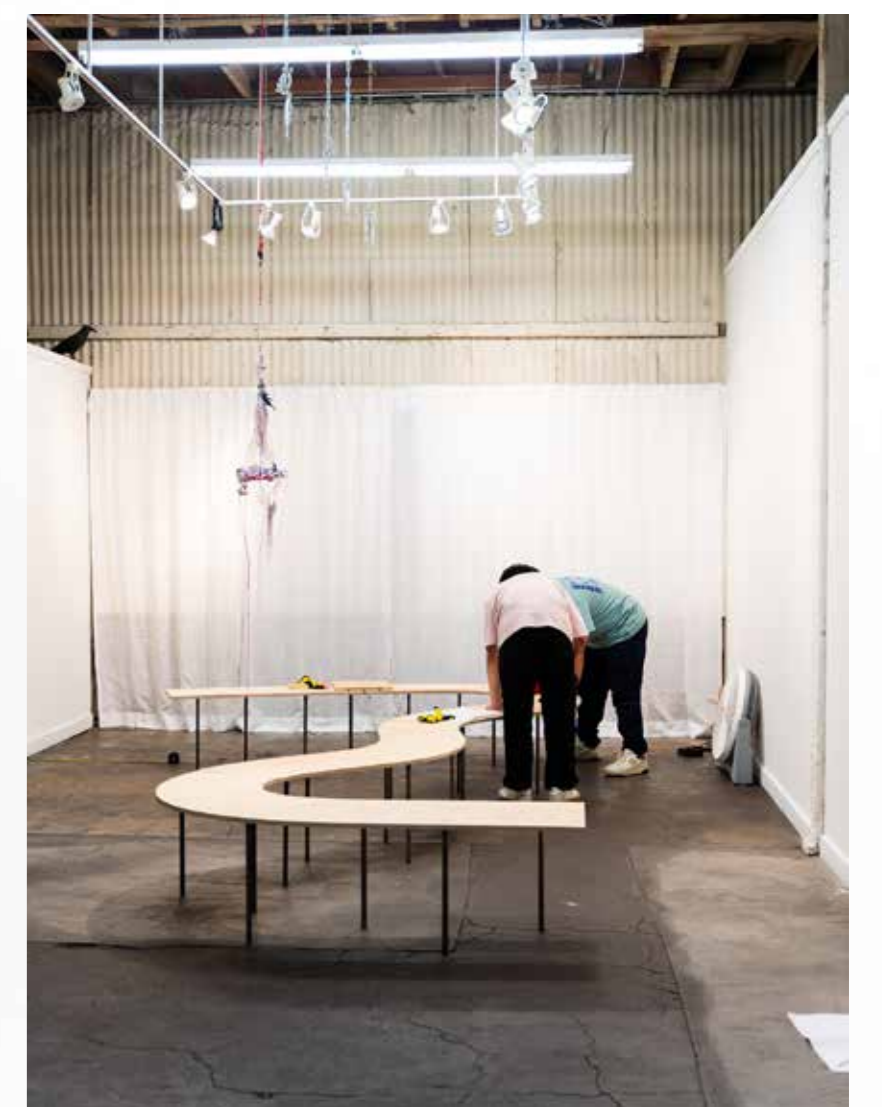
Image: Claire S. Burke

Kit-of-parts



Design and Assembly —

The piece was designed to be assembled and reassembled in units. Different pieces such as the plywood, steel frames, and backrests are fabricated individually, forming four distinct parts where they can be rearranged in different settings and sites.





4 an act of mutual understanding

Community Centered Public Mural

An Act of Mutual Understanding recontextualizes the idea of laundry spaces beyond the sterile and utilitarian into a space of sensitivity and understanding. Set in the Philippines and in the United States, the act of laundry transcends cultural and linguistic barriers associated with migration. Laundromats become spaces of gathering where mundane activities are shared. Gossip ensues, numbers are exchanged, food is shared, and a trust is layered and intertwined. Intimate moments within these spaces multiply in meaning, exhibiting our ways of living and shared being, fostering *kapwa* relationships.



Date 2021
Location San Francisco, CA

Type Public Mural
Media Acrylic Sheet, Paint

Mural Proposal

5 a space with alternative dimensions

Gallery & Shop

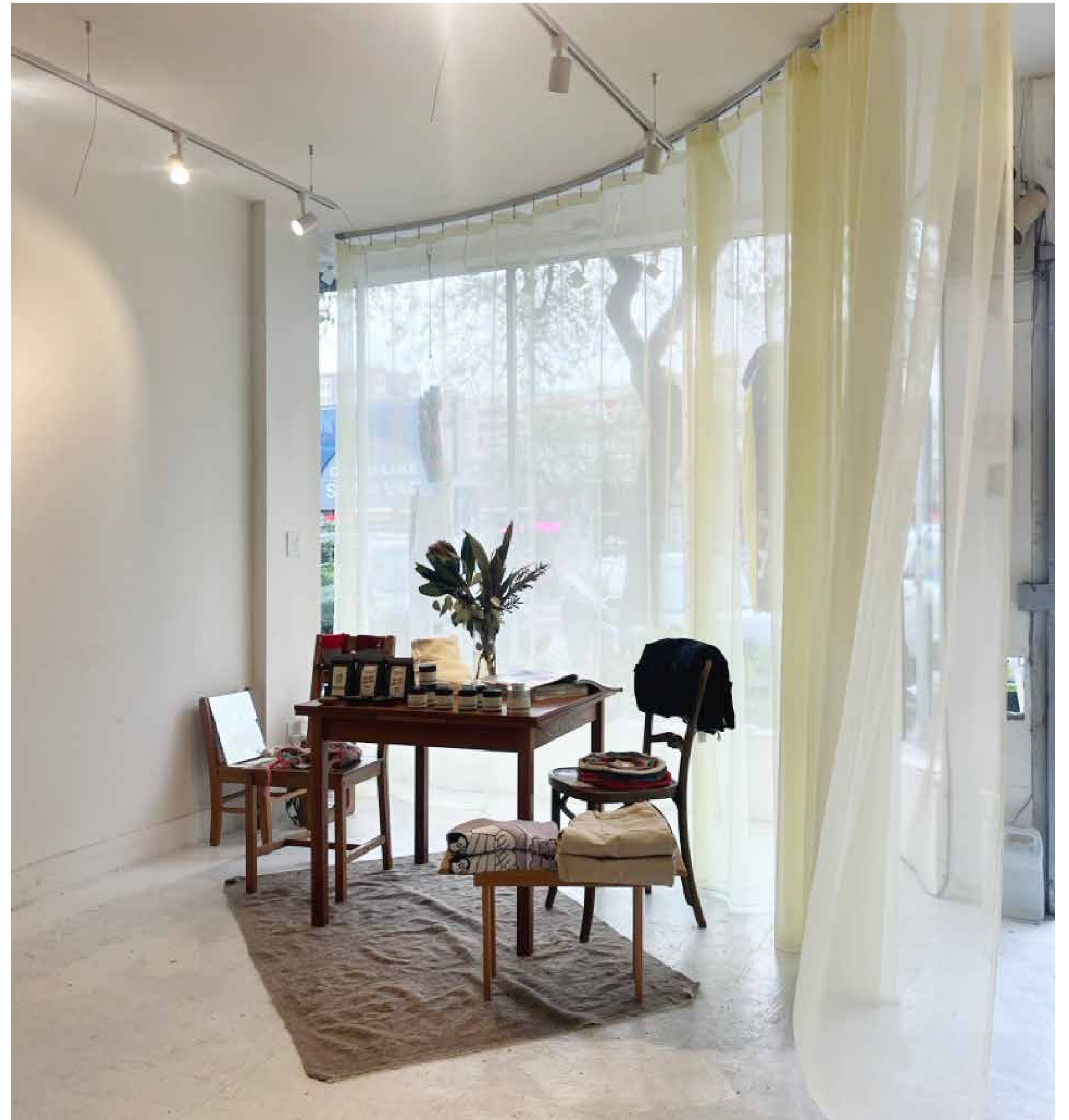
Two Two is a digital platform established in 2021 with the intent of creating a conceptual space for artists to play. Two Two envisioned a physical space, carrying an array of functions from retail to workshops enabling communal interactivity, becoming an integral fabric to the neighborhood.

The design carefully balanced project constraints while prioritizing flexibility and impact. Through minimal intervention, the simple yet effective design gesture creates a memorable spatial experience by encouraging user agency and alternative dimensions, a space within a space, responding to our contemporary way of life.

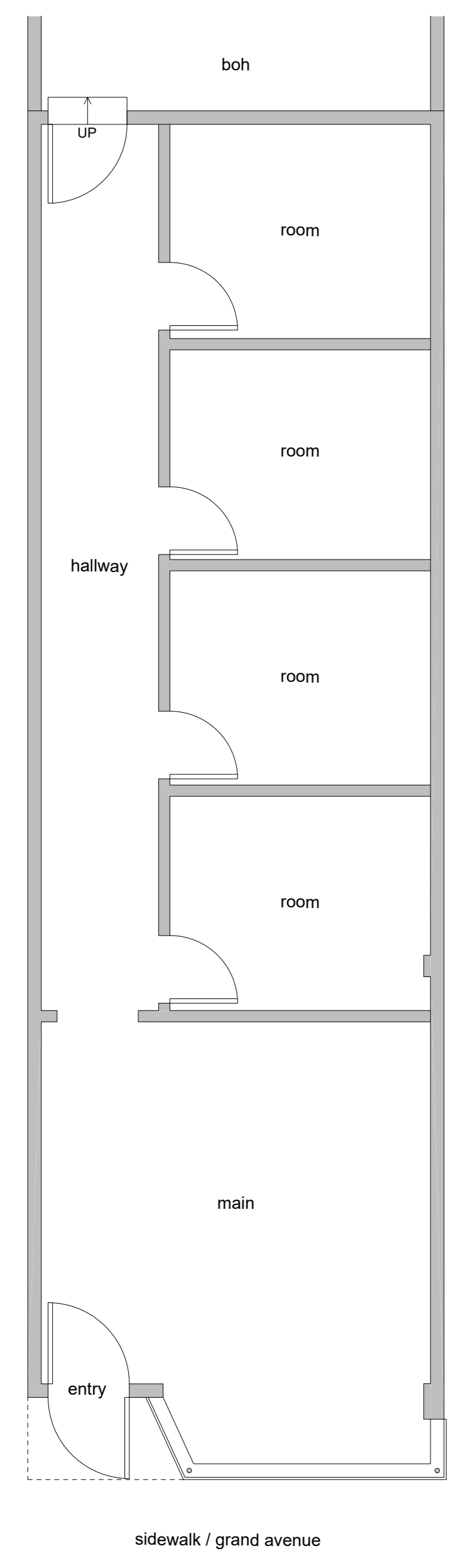
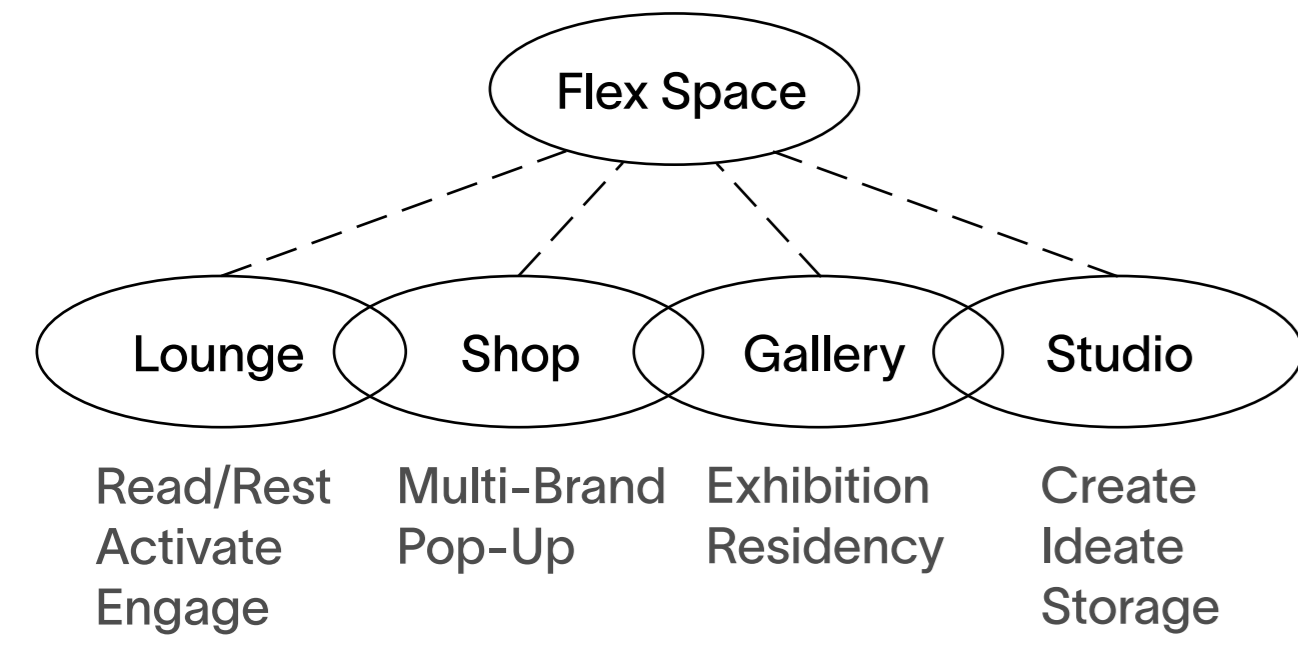
Date 2022
Location Oakland, CA

Type Program

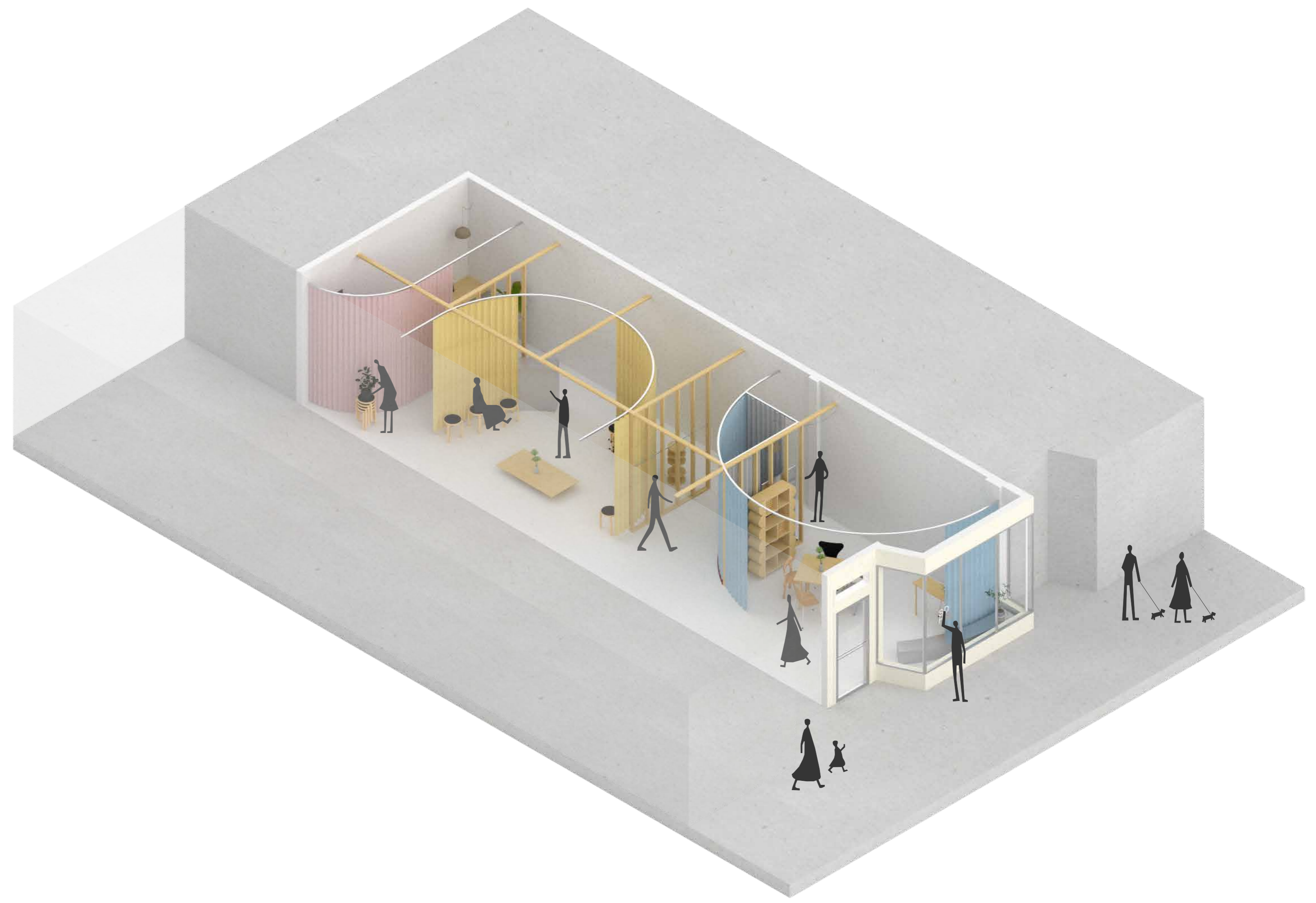
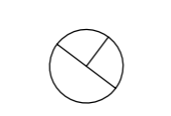
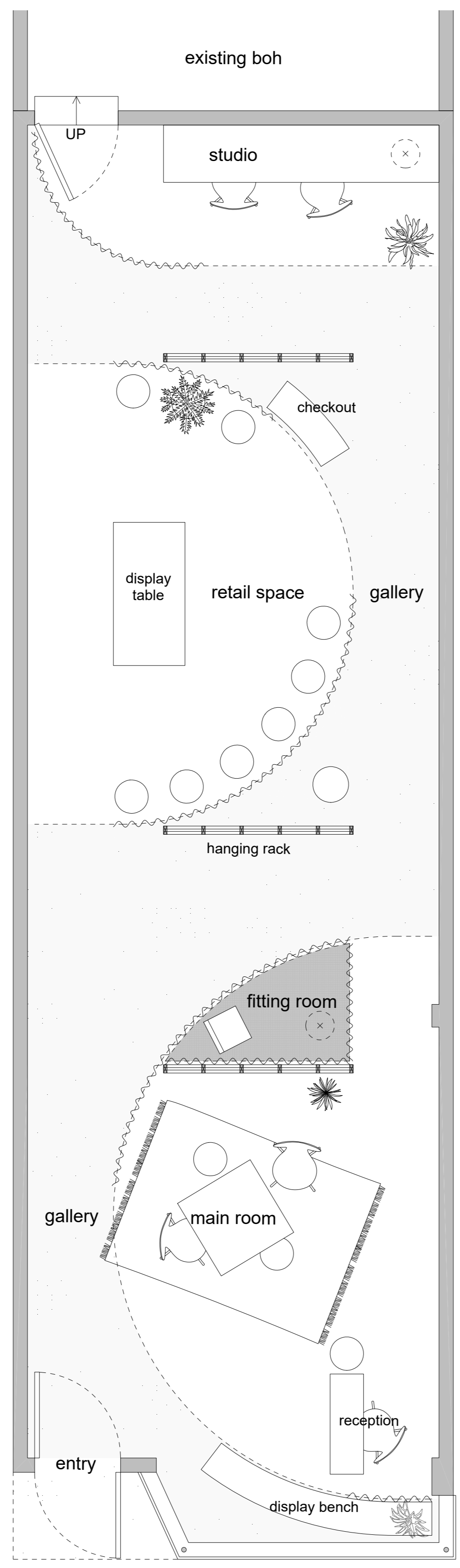
Commercial Gallery, Shop



Design —



1 Floor Plan
Scale: 1/4" = 1'



Space within space —

The concept is to balance the past, present, and future creating a space within a space. The design thoughtfully kept architectural artifacts from its previous program and years of use. The remainder of the studs were abstracted commemorating the site's former rooms giving the space spatial stability and repurposing them as display fixtures and so forth.

The addition of sheer curtains converse to the site through softness allowing spatial ephemerality and flexibility while providing a sense of space. The interstitial space in between the soft spaces is formally treated as a gallery and acting as a *kapwa* space, an extension of the sidewalk.



From past to present —

Materials and pieces of the previous space are kept and repurposed as fixtures and display tables. The concrete floor beneath is sanded and finished with sheer white epoxy allowing the materiality of the floor to translucently emerge.

Spatial Experience —

The design flexibility and adaptability create new visual and spatial feeling that can be changed instantaneously. Ultimately allowing users to maximize their design input with minimal effort, expressing new ideas through architecture.



Image: Jeremy Chiu

6 some other works

Organizational & Professional Work

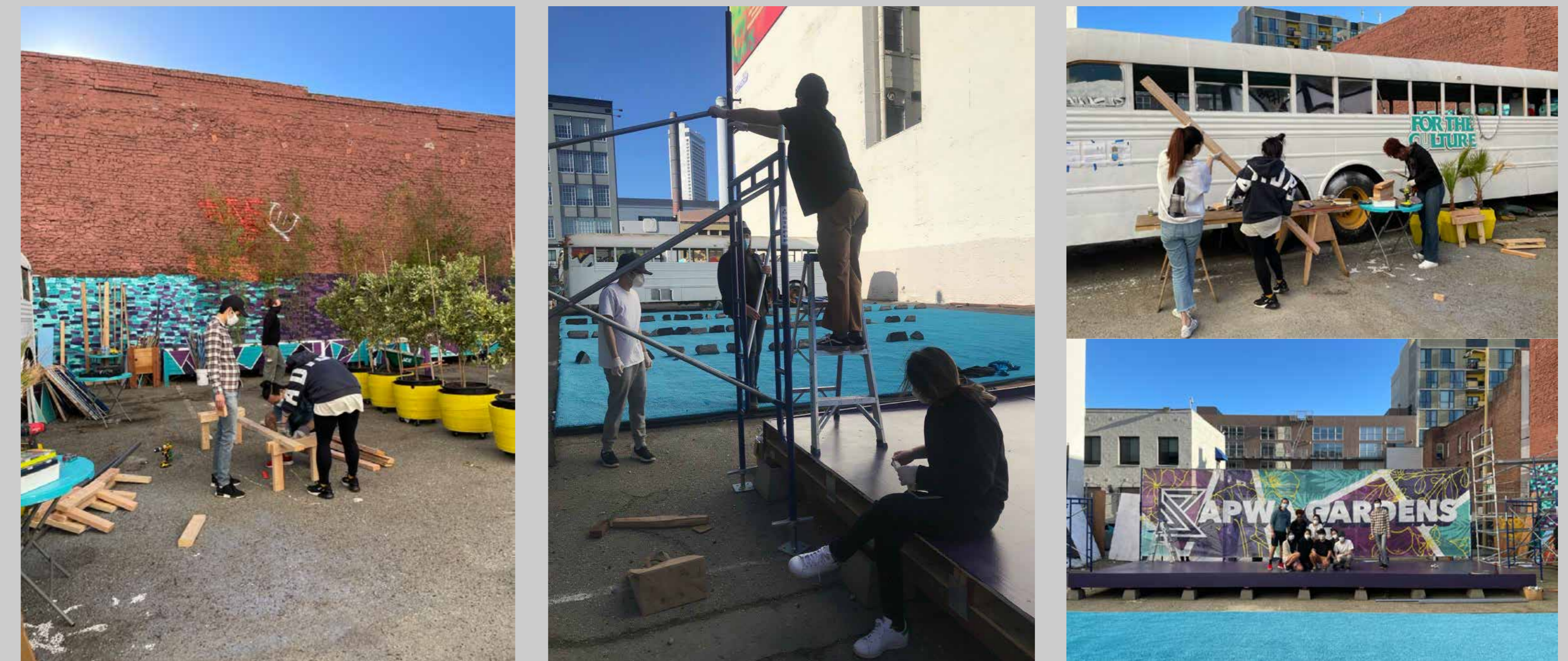
In 2020, I co-founded and served as the president of the chapter of National Organization of Minority Architecture Students at Academy of Art University. At NOMASAAU, we organized with the goal of creating a safe space of learning and networking opportunities for students. We collaborated with faculty to facilitate a formal mentorship program matching students with professionals. We held conversations with inspiring people, non-profit organizations, and architecture offices from across the US including Food Architects and Solomon Cordwell Buenz on navigating the architecture and design field as well as the non-profit work of SoMA Pilipinas about grassroots community building.

Additional work include samples of my professional work at Haddock Studio in San Francisco, CA showing several projects I participated in including Baggu SOHO in New York City and residential cabins in Northern California.



Lectures and conversations —

Nobody Asked For This was a conversation with Dong Ping-Wong of Food Architects about the architecture and design field held by NOMASAAU.



Community work —

NOMASAAU helped build Kapwa Gardens, a community garden centered on Filipino-American values in South of Market in San Francisco.



Baggu SOHO —

Contribution Office	Design Development Haddock Studio	Location Program	New York, NY Retail
------------------------	--------------------------------------	---------------------	------------------------



Cabin in the Woods —

Contribution Office	Rendering Haddock Studio	Location Program	Jenner, CA Residential
------------------------	-----------------------------	---------------------	---------------------------



Eagle's Nest Cabin —

Contribution Office	Model Haddock Studio	Location Program	Jenner, CA Residential
------------------------	-------------------------	---------------------	---------------------------