

**Brand:** Das Favorite x Boys Who Can Cook

**Date:** April 25 2024

**Product:** Smoking Jacket

**Sample Size:** XL (52)

**Material:** 100% Satin or Sateen Twill



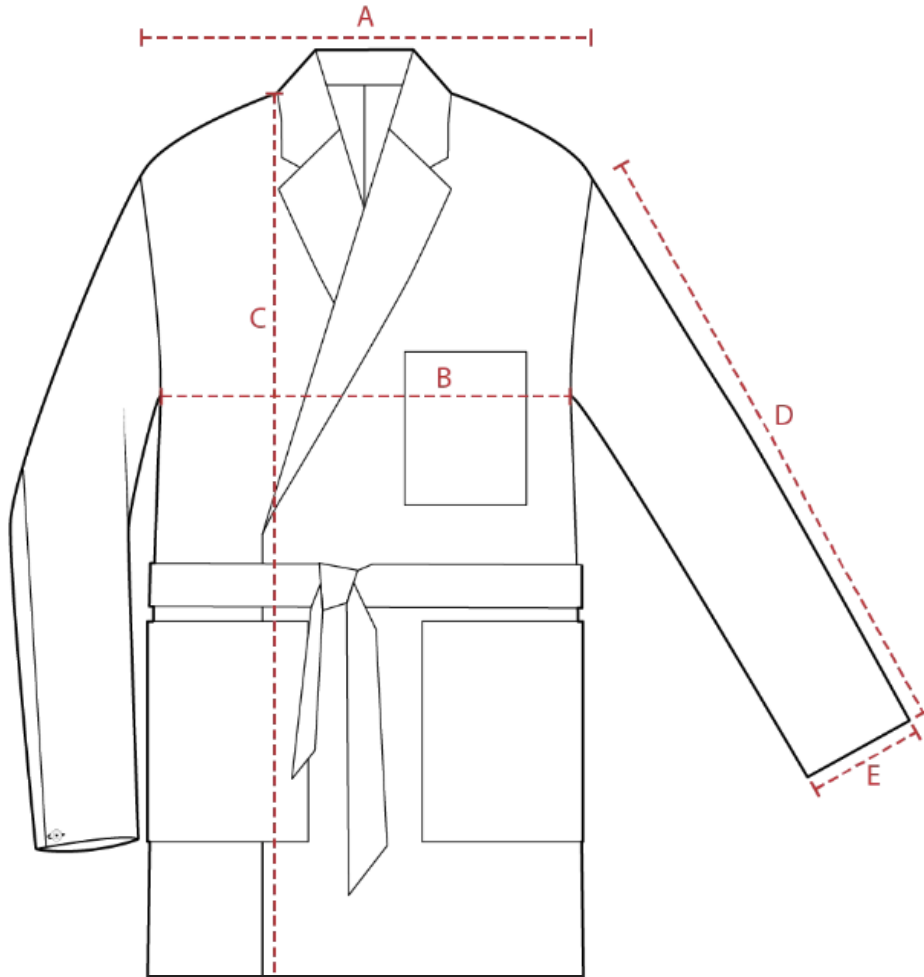
Please center and middle align all embroideries on pockets

If there is a line, (see orange line in the illustration) an embroidery, or fold-over on the garment, then please center embroidery below that line

92C8C4



## Robe Measurements



**A** (Shoulder Length) - 20.3 inches

**B** (Chest) - 24.8 inches

**C** (Body Length) - 38 inches

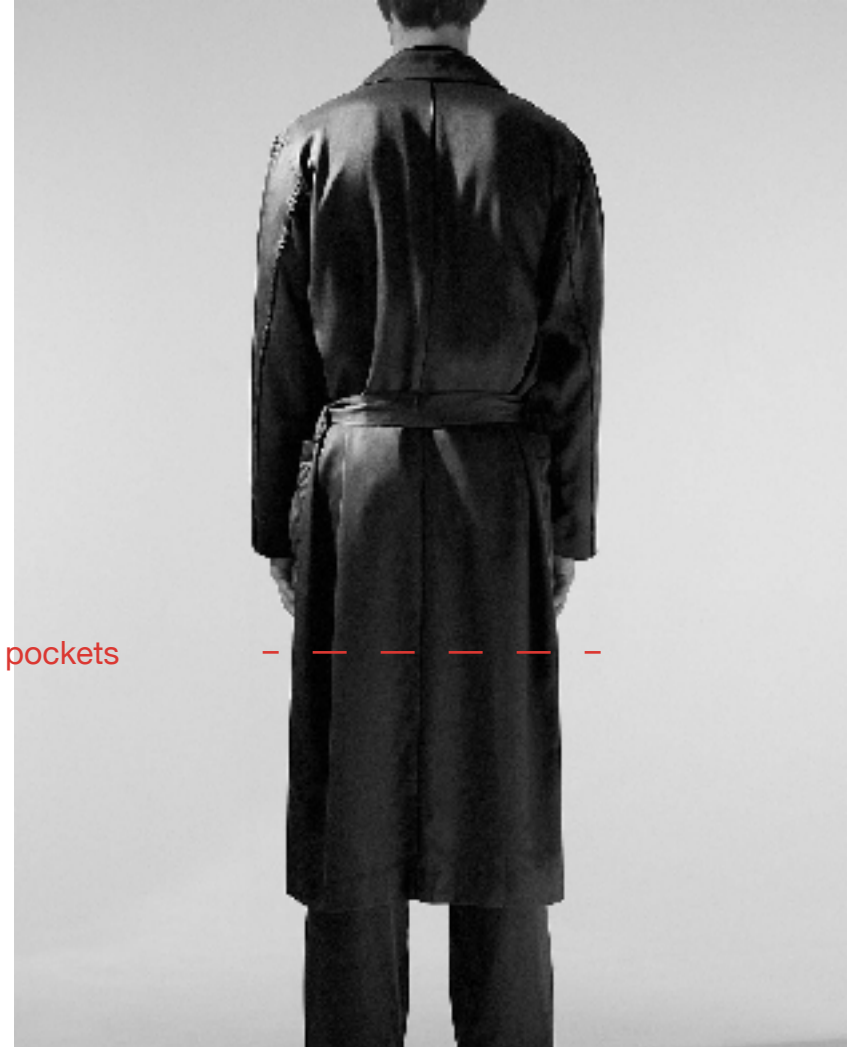
**D** (Sleeve Length) - 25.8 inches

**E** - (Sleeve Opening) - 6.9 inches

## *Fit Reference*



Crop here - below pockets



This is how the robe should fit on body. The only difference is that we would like to crop the bottom of it, so that the hem falls just below the pockets.

*Head  
Chef*

92C8C4



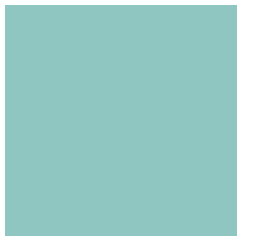
Boys who



can cook



92C8C4



*Neck Garment Label Artwork*



Are you able to provide size labels?

## *Piping Details*



Please make sure to include  
same piping as this  
reference