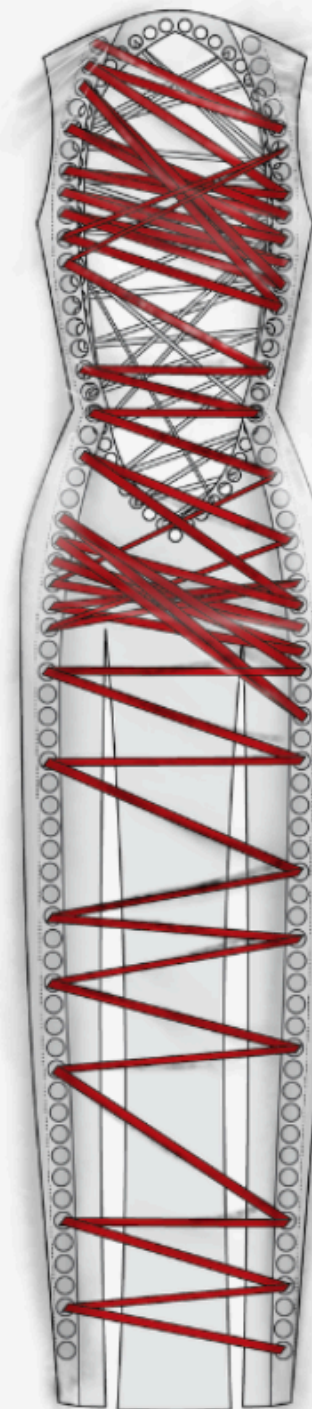


PRESENTATION BOARDS

PHOXERA

JOEL ERIC F23FD0647



FINAL LINE UP

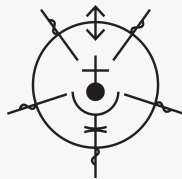
PHOXERA



PANTONE® 19-4206 TCX	Black Robe
PANTONE® 19-3917 TCX	Blackened Pearl
PANTONE® 18-4005 TCX	Steel Gray
PANTONE® 19-1755 TCX	Equestrian Red
PANTONE® 11-0615 TCX	Pear Sorbet
PANTONE® 14-0757 TCX	Misted Marigold
PANTONE® 11-0608 TCX	Coconut Milk
PANTONE® 19-1535 TCX	Syrah
PANTONE® 11-0108 TCX	Solitary Star
PANTONE® 19-3812 TCX	Baritone Blue

COLOUR PALETTE

PHOXERA

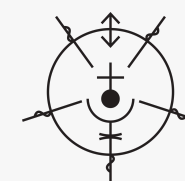




From what I have identified from the images, it's all about making this warp change how the body interacts with the clothes, or how the clothes interact with the outside world, hindering some movements. Coming from the anti-gait type of fashion that changes how people move—in this case, how the clothes change the way we move—this aligns with my concept of wanting to take back agency over their bodies and choosing what they want to do with their bodies, with fashion assisting in that. Either showing what they want to show or moving how they want to move without much thought—as a form of physical protest where the body becomes the protest. Clothes are no longer just to show a political stance but also to give the wearer control over their body and what they want to do. For this, it is a few minute changes to how the clothes are made and what is taken into context; this could translate into pattern cutting or even shape. As I was sketching, I started using elements from the French Revolution to add meaning to the designs, such as details and shapes. I also took the concepts from the colour association portion of the deck and decided to warp the shapes while still retaining their meaning, or even introducing new meanings that would make sense in the protest against the authoritarian government. I used the old sketches and ideas from the previous deck and developed them into new ideas for the designs. From this point forward, the designs had the elements and details of the French Revolution deck, as well as the associations I took from colours—re-contextualizing them along with the anti-gait elements.

INSPIRATION BOARD

PHOXERA



LOOK 1



wool cashmere for the jakcet shell
cotton lining for the inside of the jacket
cotton gabardine for the pants

LOOK 2



heavy weight linen

LOOK 3



wool cashmere for the jakcet shell
cotton lining for the inside of the jacket
batting for volume
boning for internal structure
voile for skirt
latex for the inside top

LOOK 5



scoliosis brace
silk
wool muslin

LOOK 4

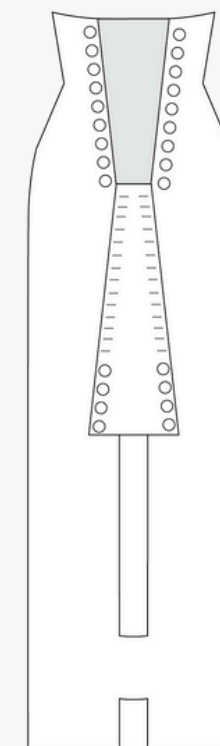
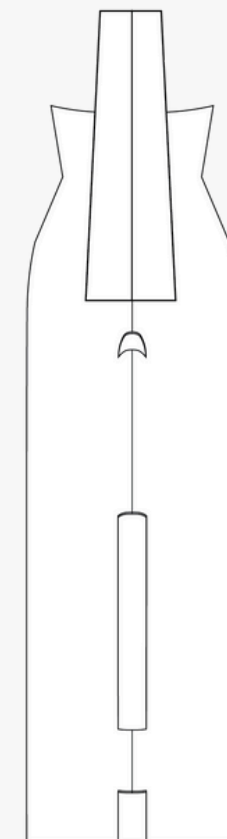
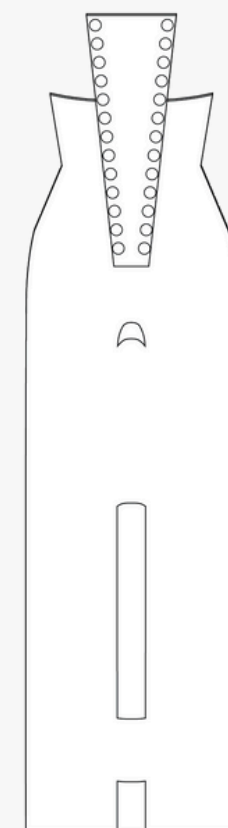
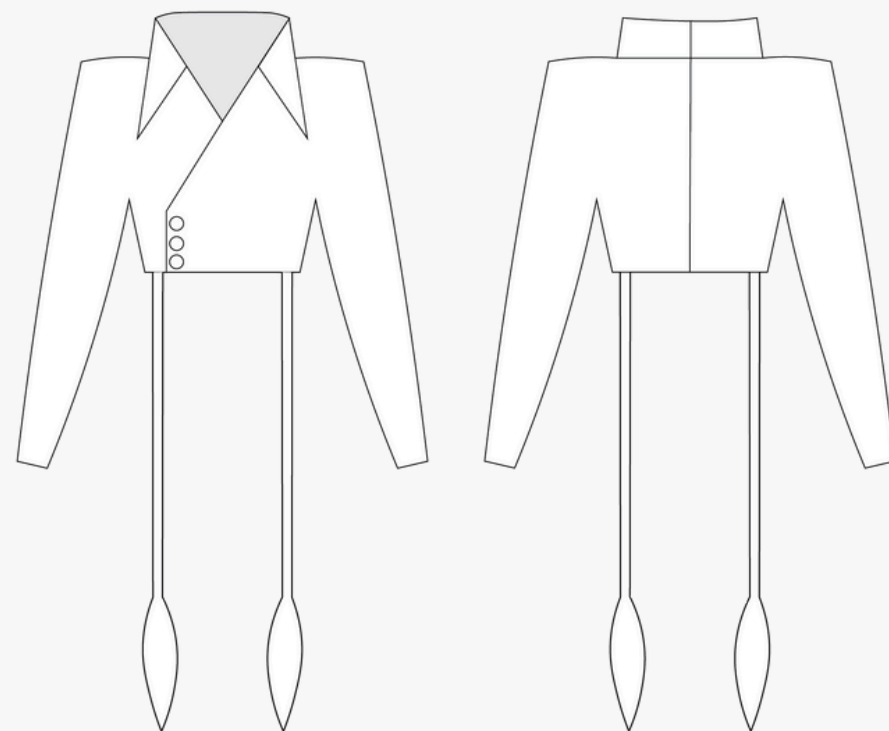
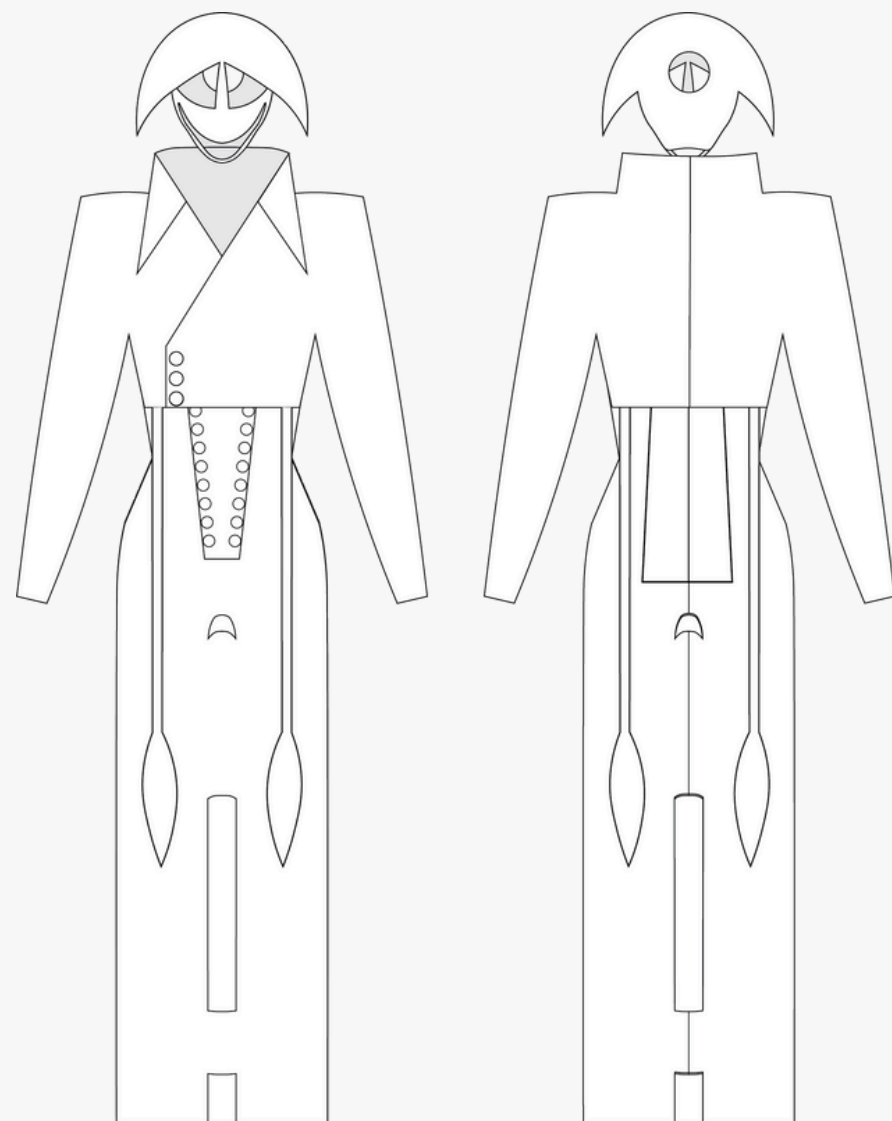


wool muslin
red silk ribbon

FABRIC BOARD

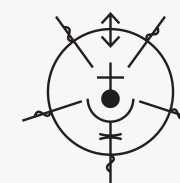
PHOXERA

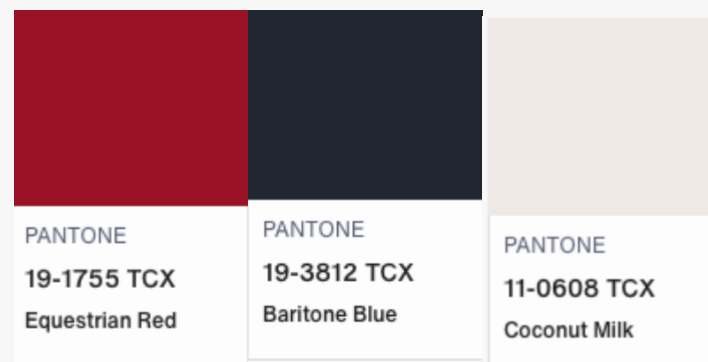




LOOK 1

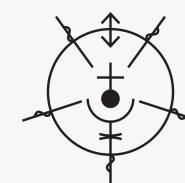
PHOXERA

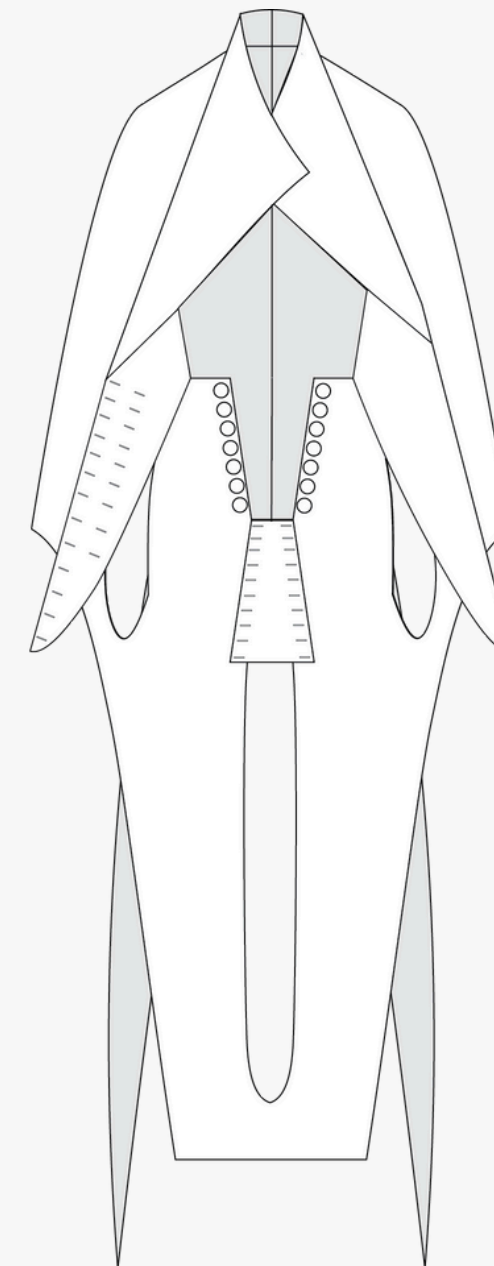
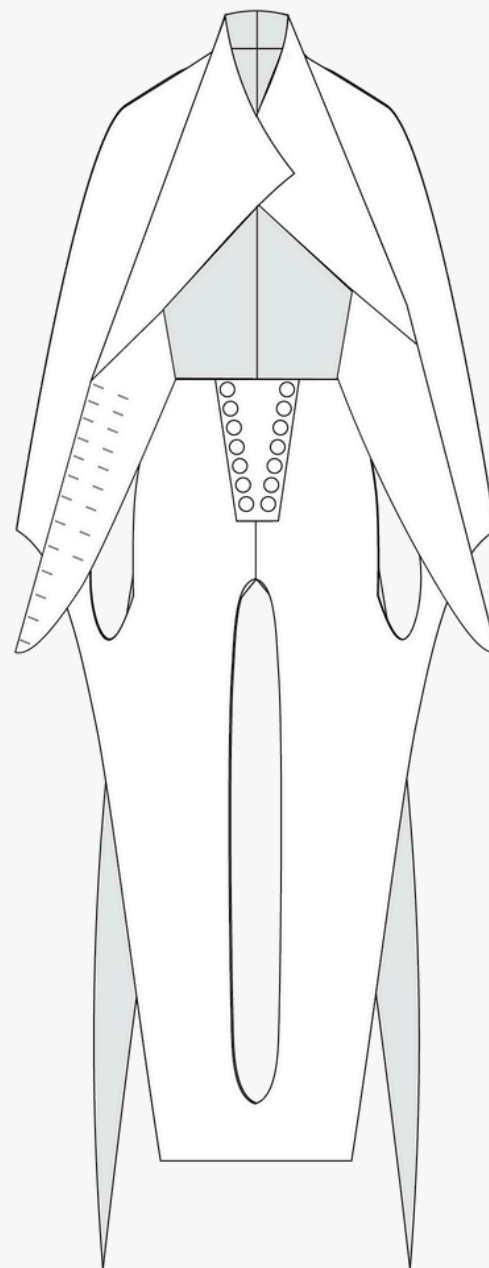
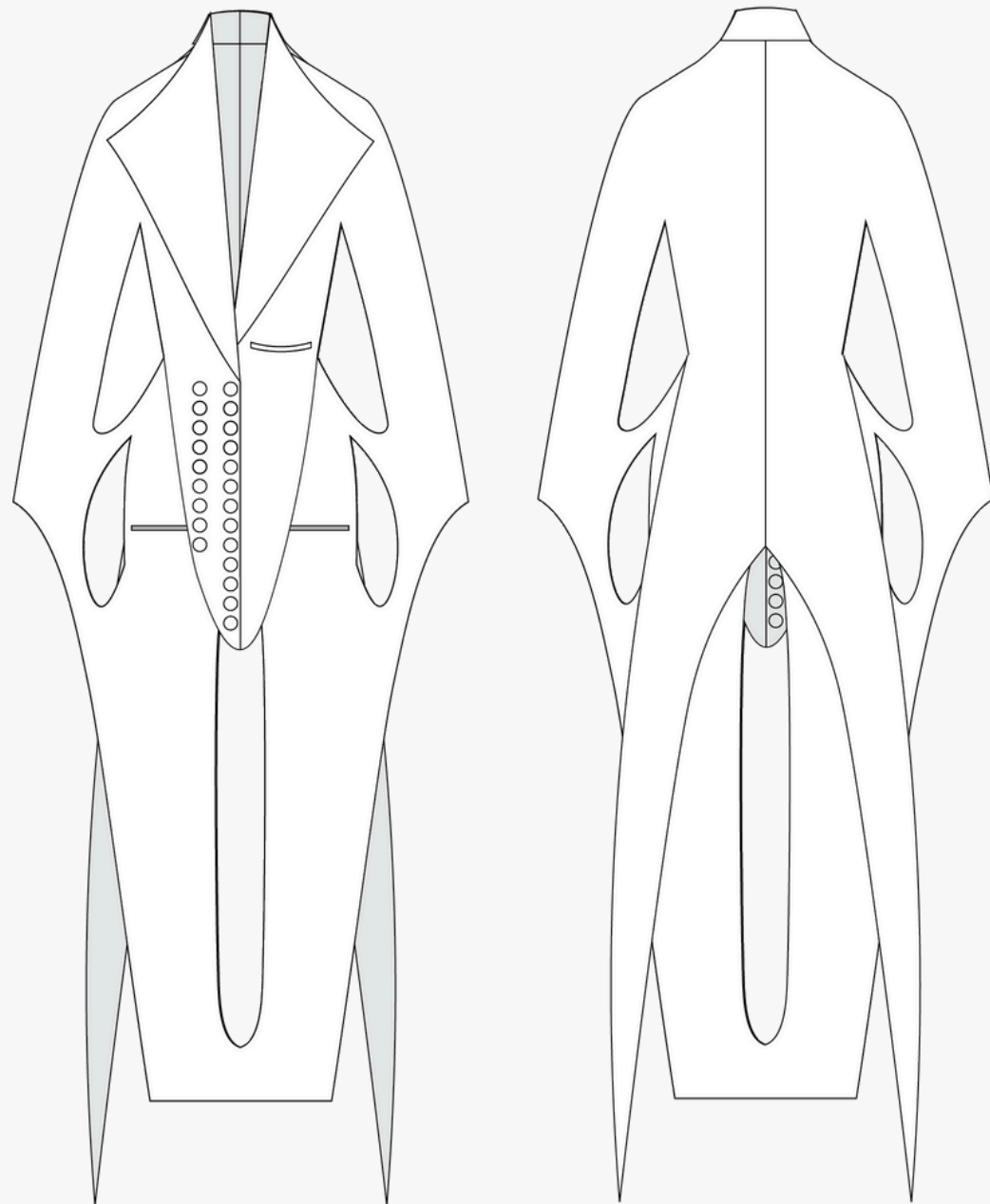




LOOK 1

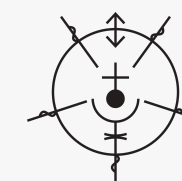
PHOXERA





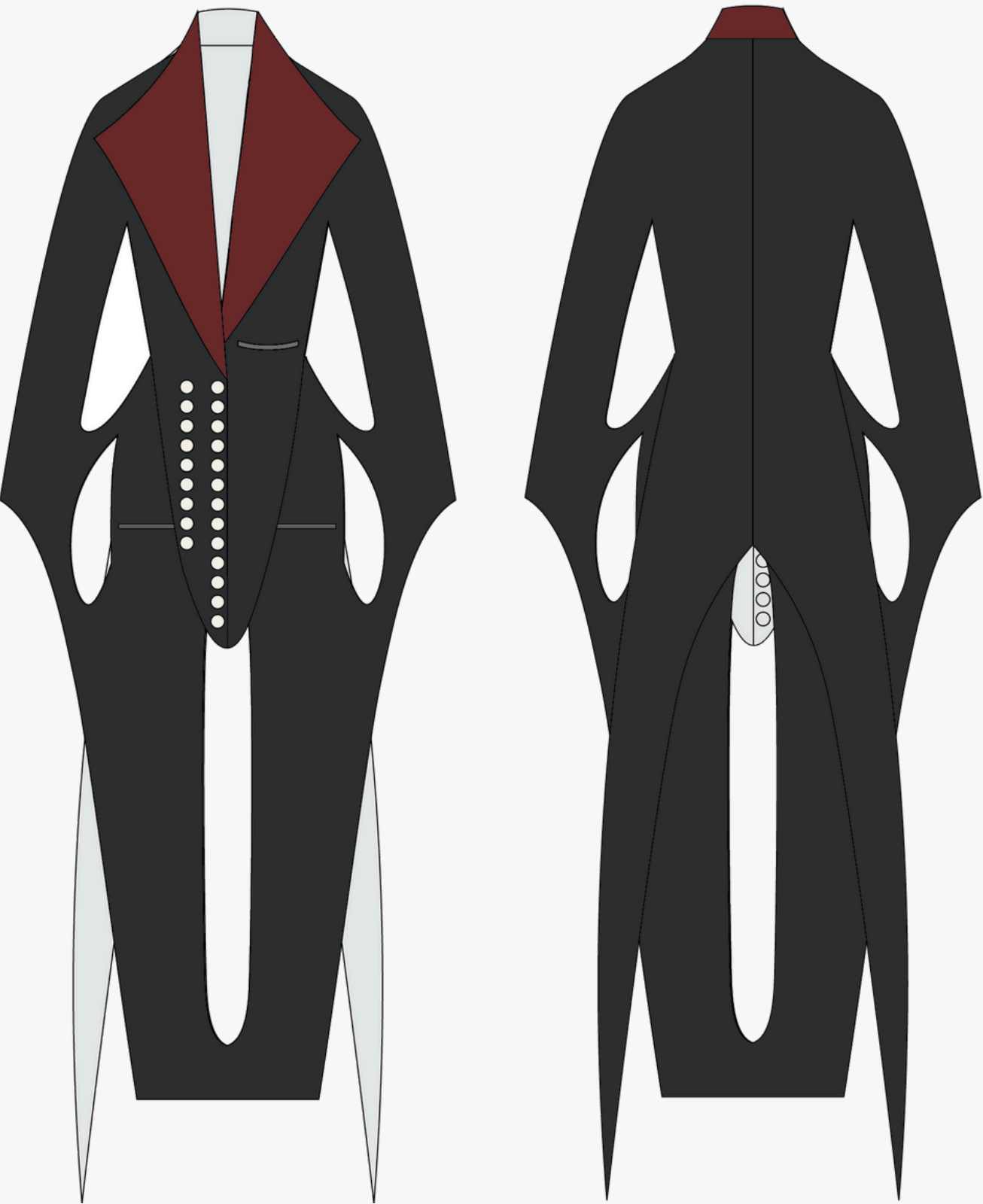


LOOK 2

PHOXERA



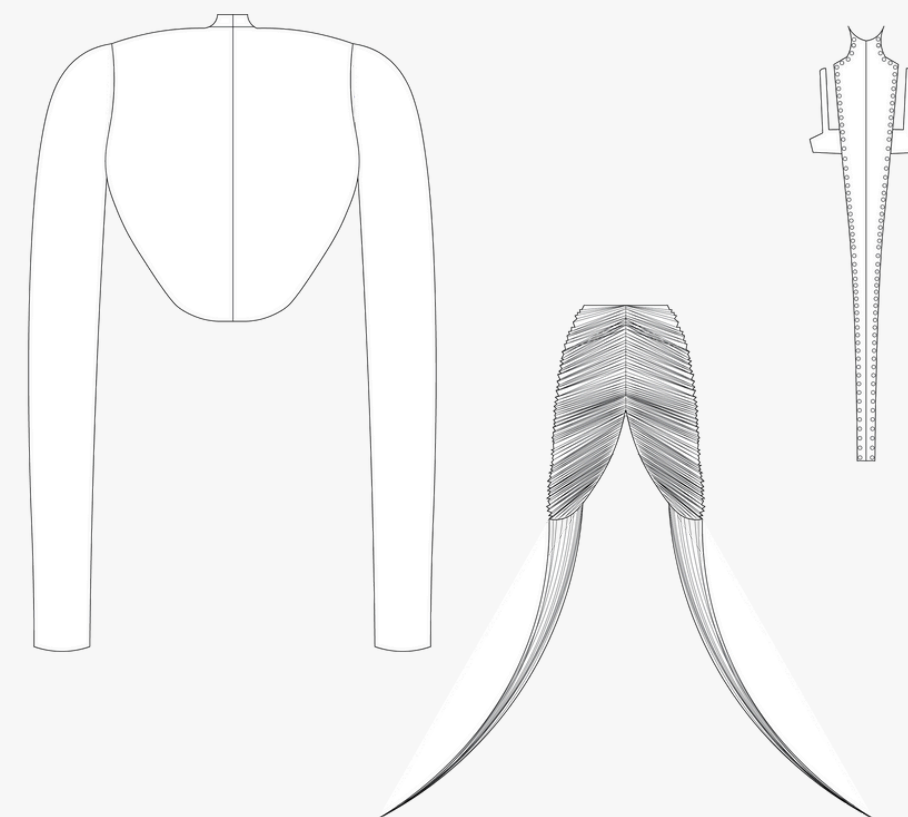
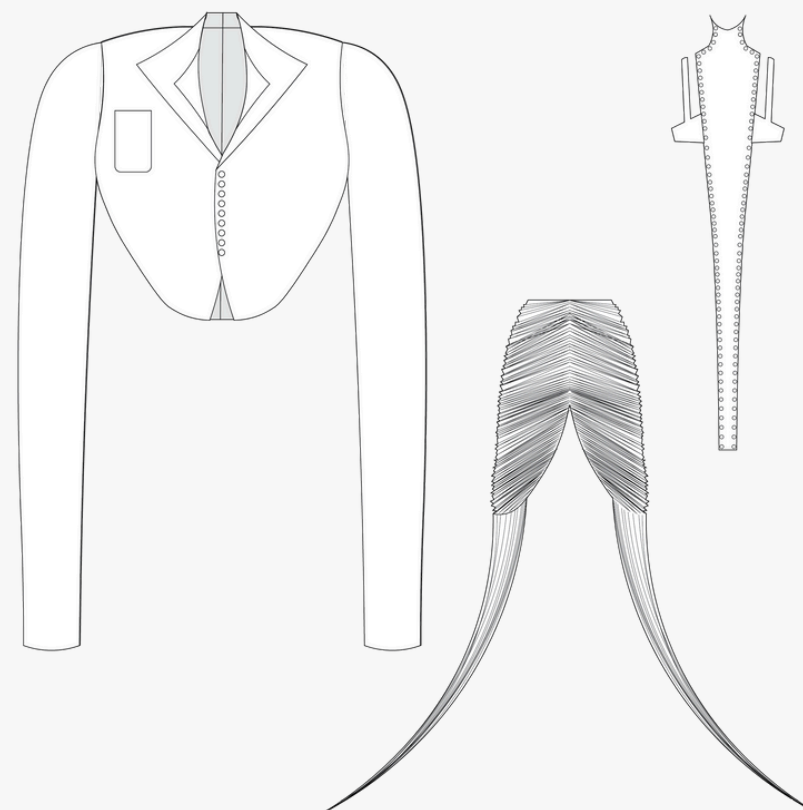
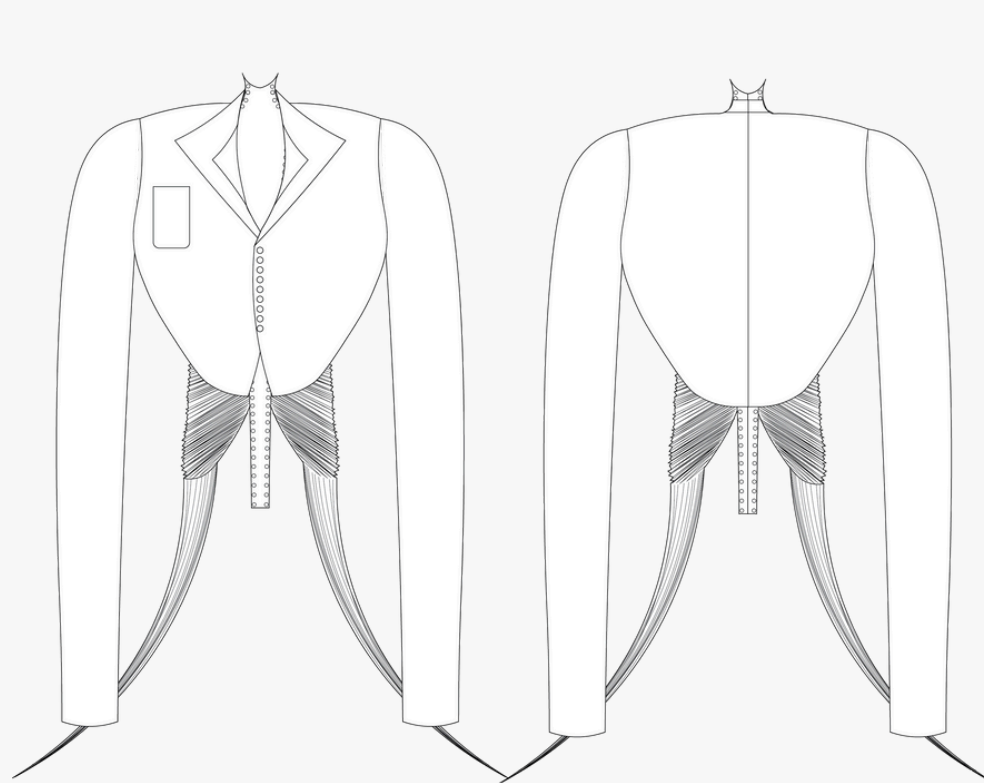
	
PANTONE 19-4206 TCX Black Robe	PANTONE 19-1535 TCX Syrah



LOOK 2

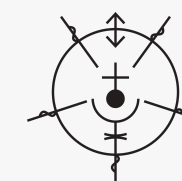
PHOXERA





LOOK 3

PHOXERA



PANTONE 19-4206 TCX Black Robe	PANTONE 19-1535 TCX Syrah	PANTONE 11-0608 TCX Coconut Milk	PANTONE 19-1755 TCX Equestrian Red



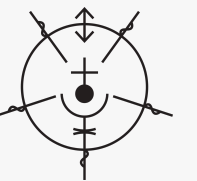
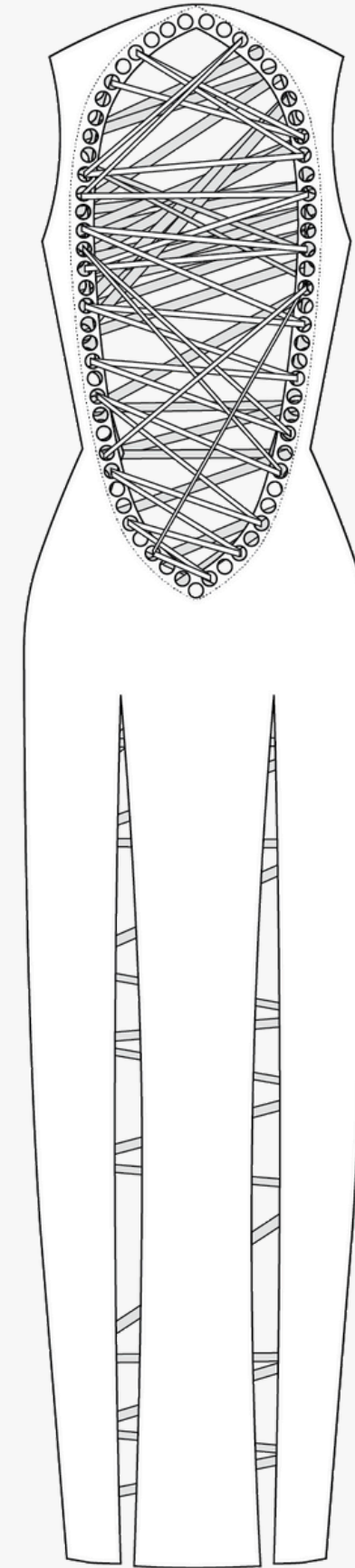
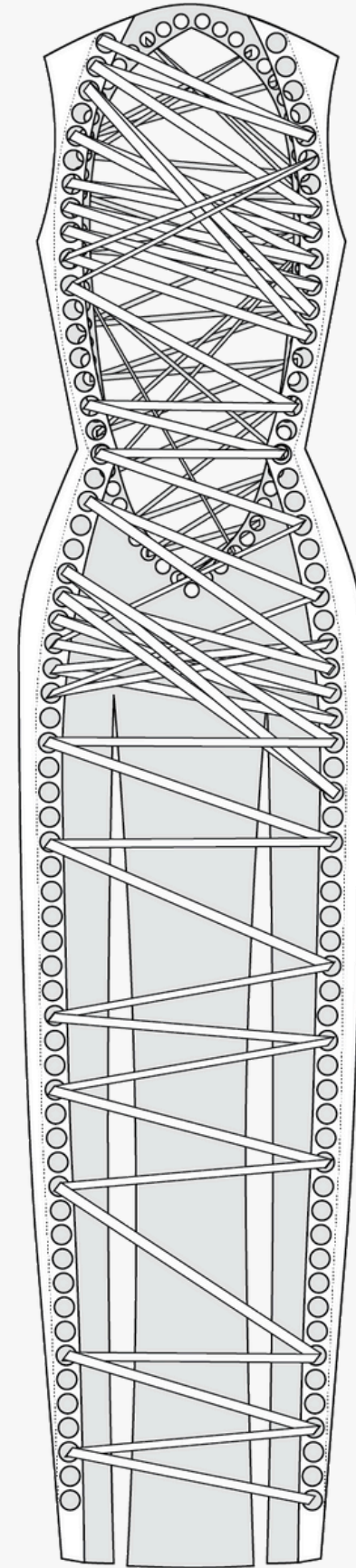
LOOK 3


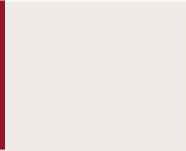
PHOXERA

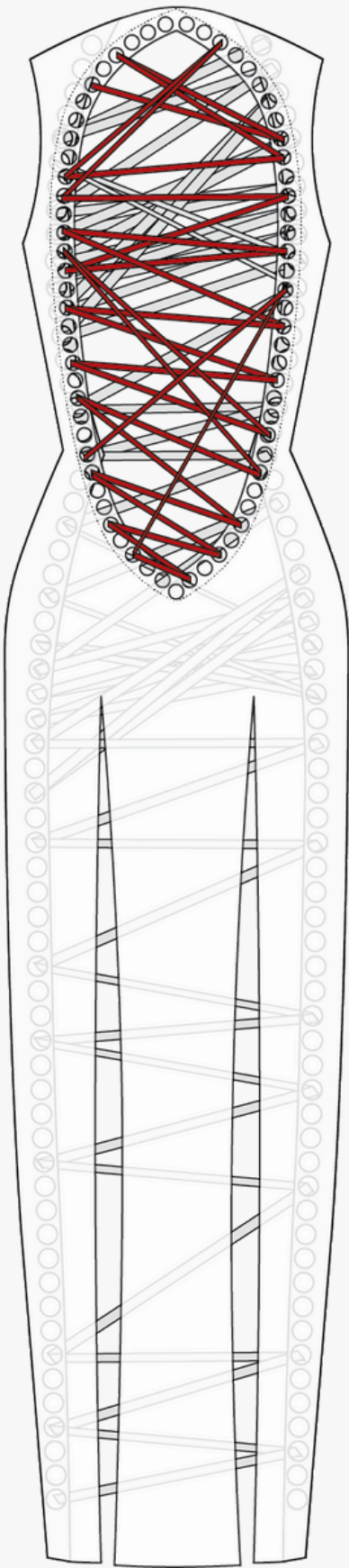
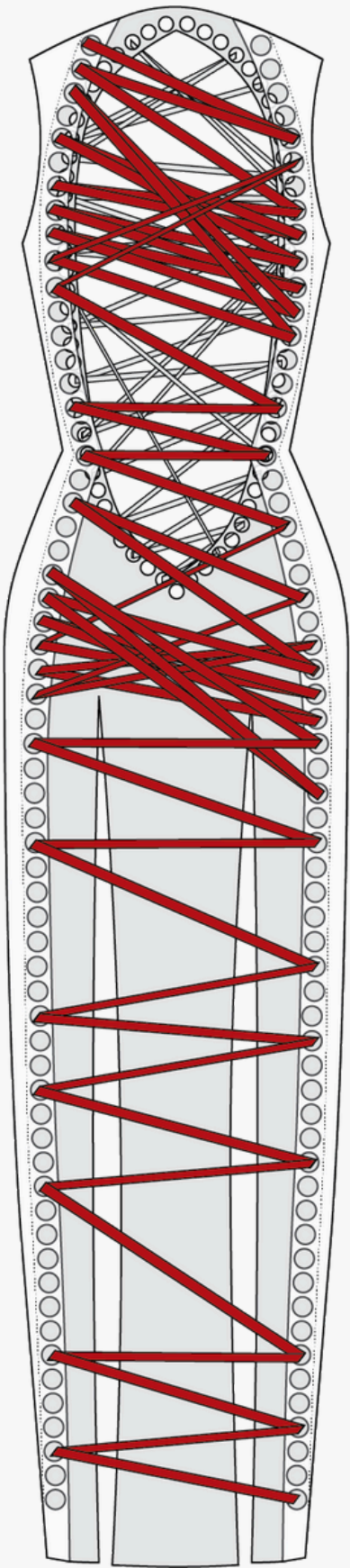


LOOK 4

PHOXERA



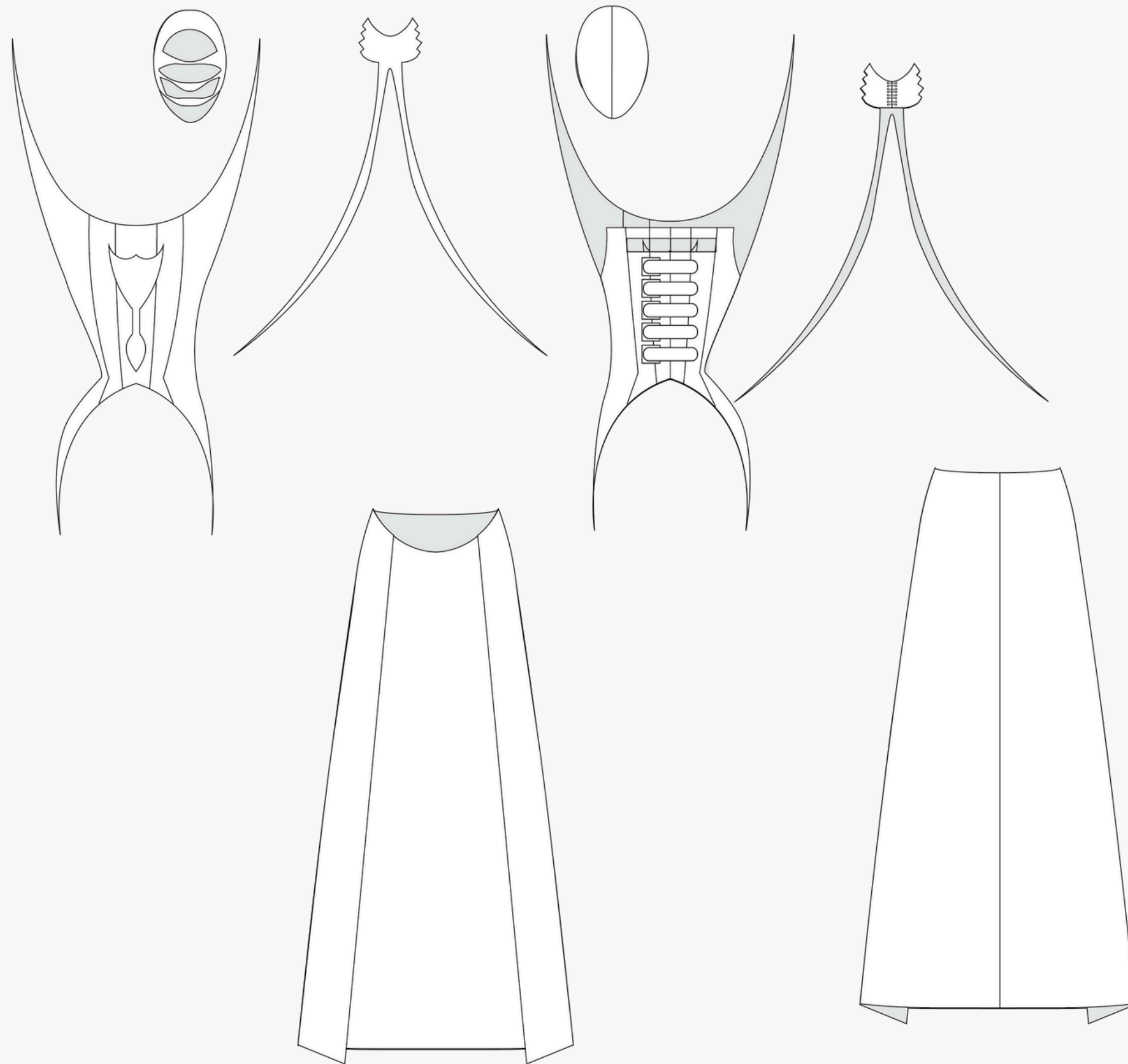
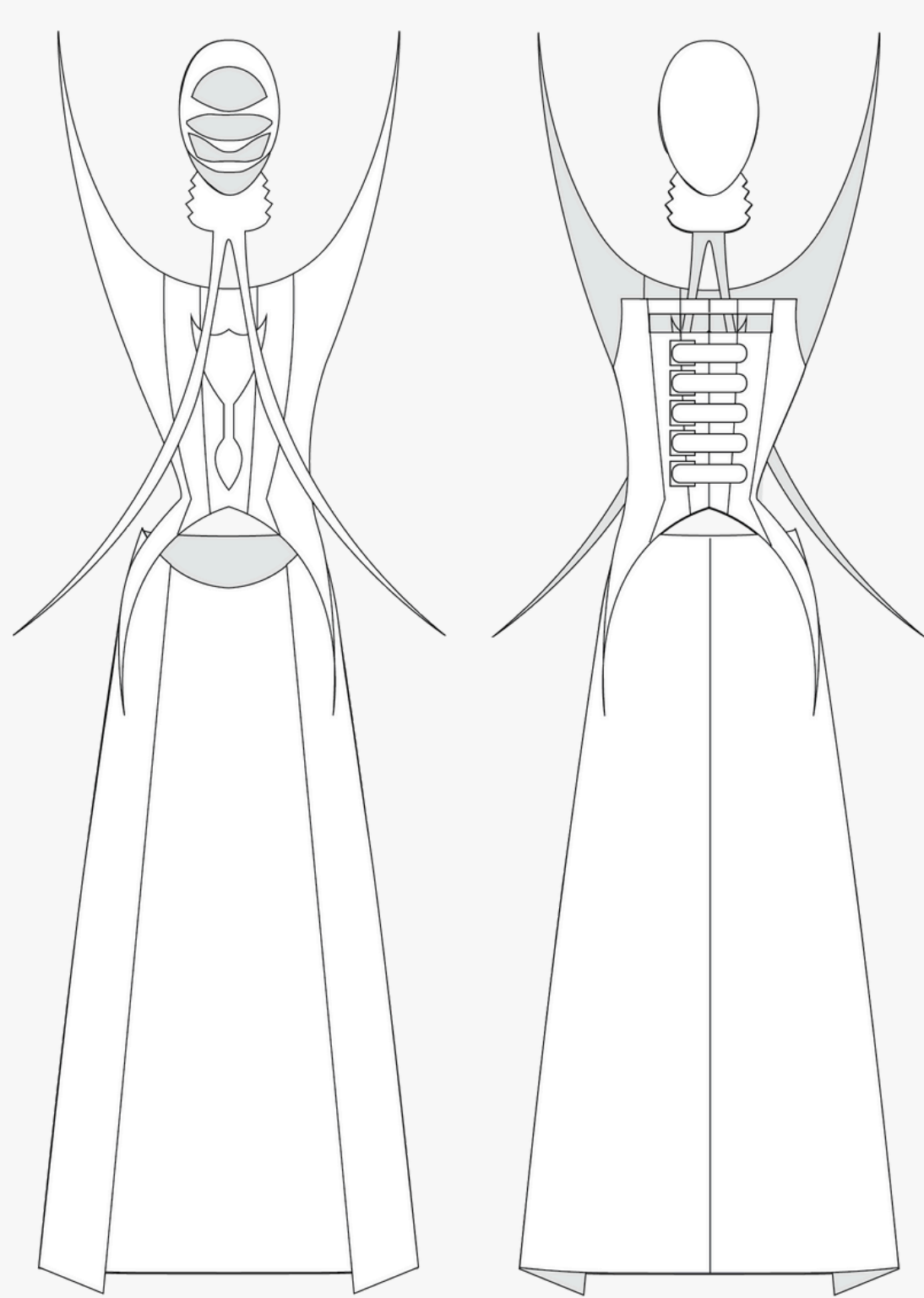
	
PANTONE 19-1755 TCX Equestrian Red	PANTONE 11-0608 TCX Coconut Milk



LOOK 4

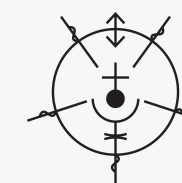
PHOXERA

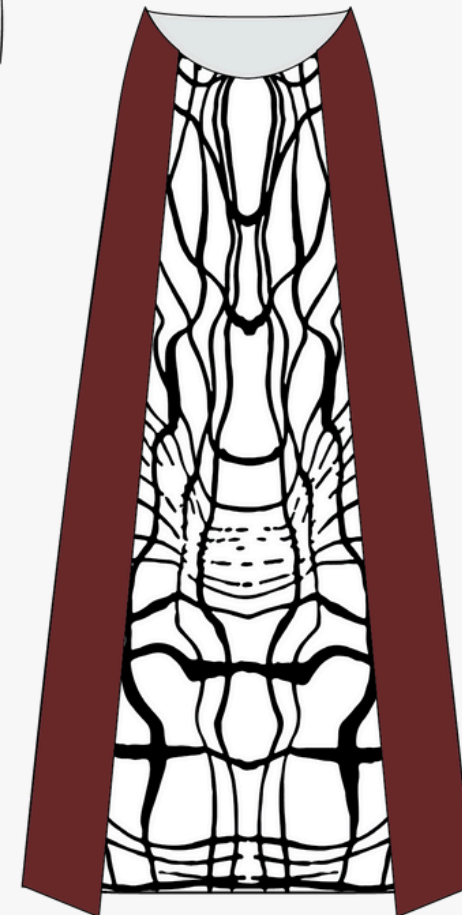
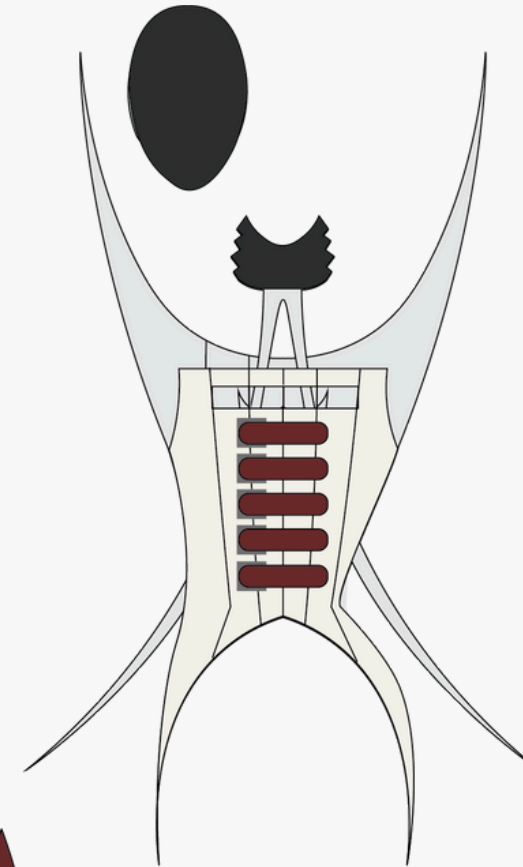
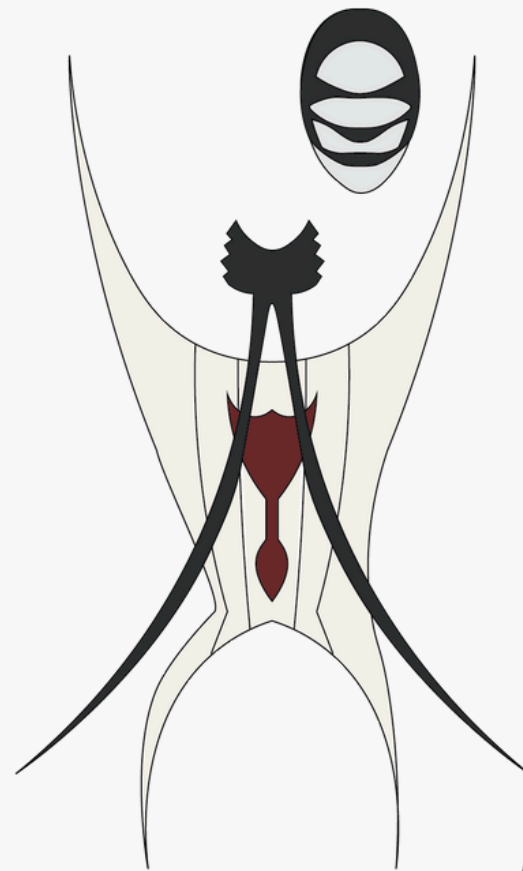
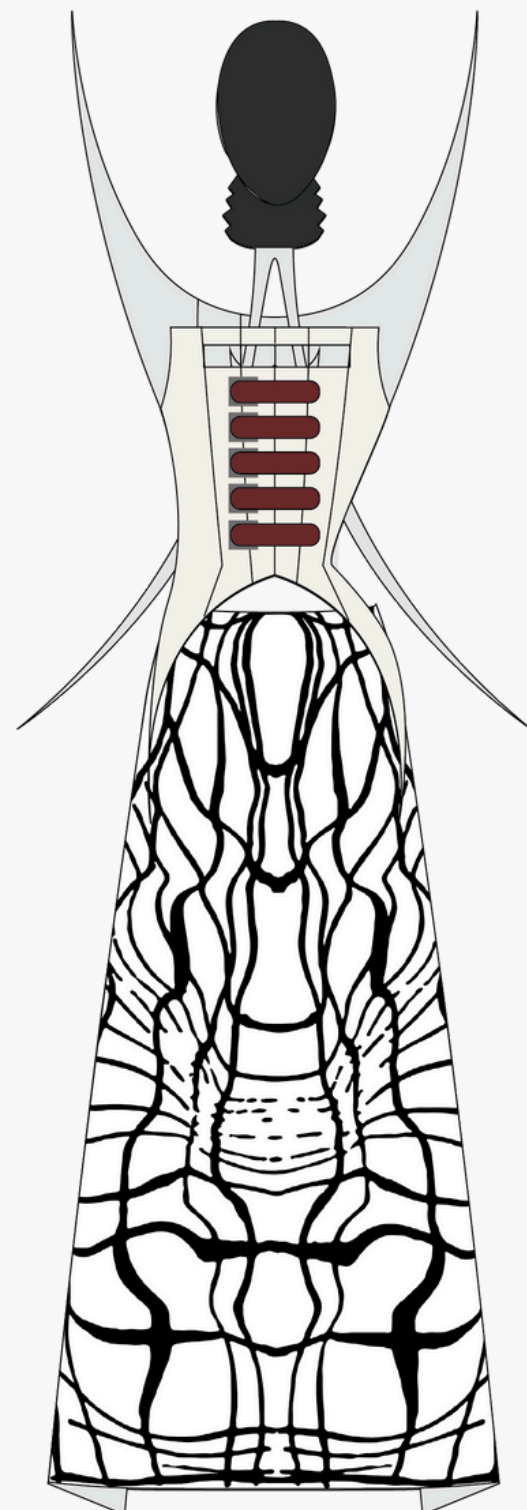
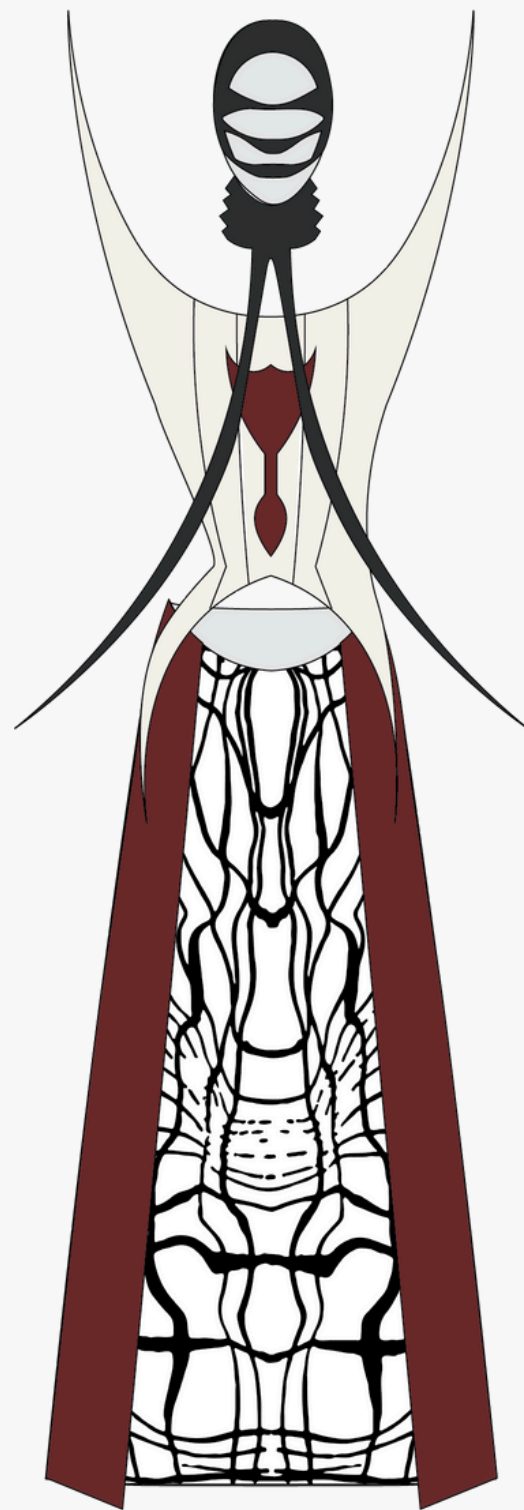




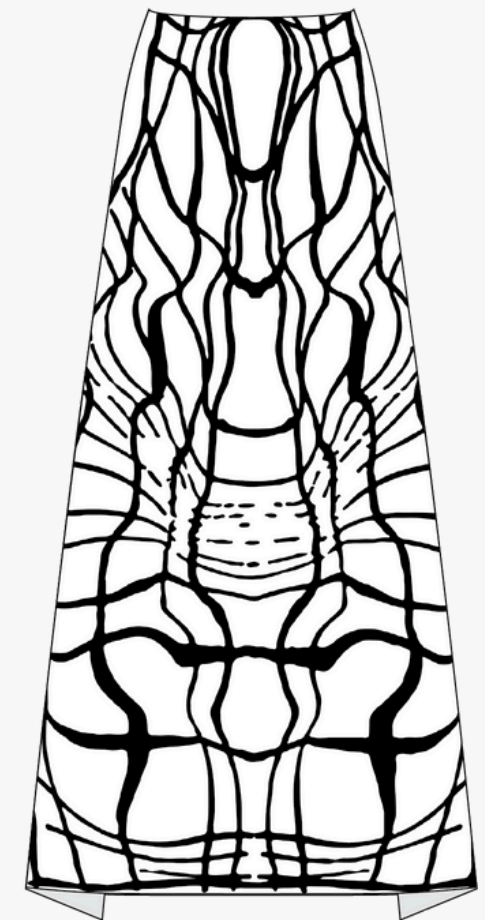
LOOK 5

PHOXERA





			
PANTONE 19-4206 TCX Black Robe	PANTONE 18-4005 TCX Steel Gray	PANTONE 19-1535 TCX Syrah	PANTONE 11-0608 TCX Coconut Milk



LOOK 5

PHOXERA

