


# G V L L E R I V



LIVE AS ONE

**WORK,**

**LIVE,**

**GROW,**

**AS ONE.**

## TABLE OF CONTENTS

9	Welcome to Living As One
23	Play As One
34	Galleria III: The Next Chapter
47	Experience As One
82	Live As One
88	Connect As One
94	Enjoy As One
109	Move As One
117	Learn As One
122	Discover As One

A NEW STATE  
OF WELL-BEING

GALLERIA III



---

# WELCOME TO LIVING AS ONE

# LIVE

## A MASTER-PLANNED WELLNESS COMMUNITY

Leading the new Dupont's ever-expanding, vibrant cultural scene, Galleria on the Park is Toronto's most inspired new neighbourhood of condominiums, shops, and places to gather, all located next to an incredible eight-acre park.

The story of Galleria on the Park started with an idea about a new urban community living in wellness as one, and blossomed into a ground-breaking master plan, crafted with input from neighbourhood residents.

Galleria Site

---

# 20 acres



## MASTER PLANNED FOR URBAN LIFE

A large green park with a massive, state-of-the-art community centre; walkable, generous sidewalks lined with trees and plants; and colourfully patterned streets create an ideal environment for urban living at Galleria on the Park.

Galleria will accommodate almost 6,000 people, living as one community in eight architecturally distinct modern condominium buildings. Galleria offers a premium wellness lifestyle and convenient access to on-site creative office spaces and high-quality retail outlets.

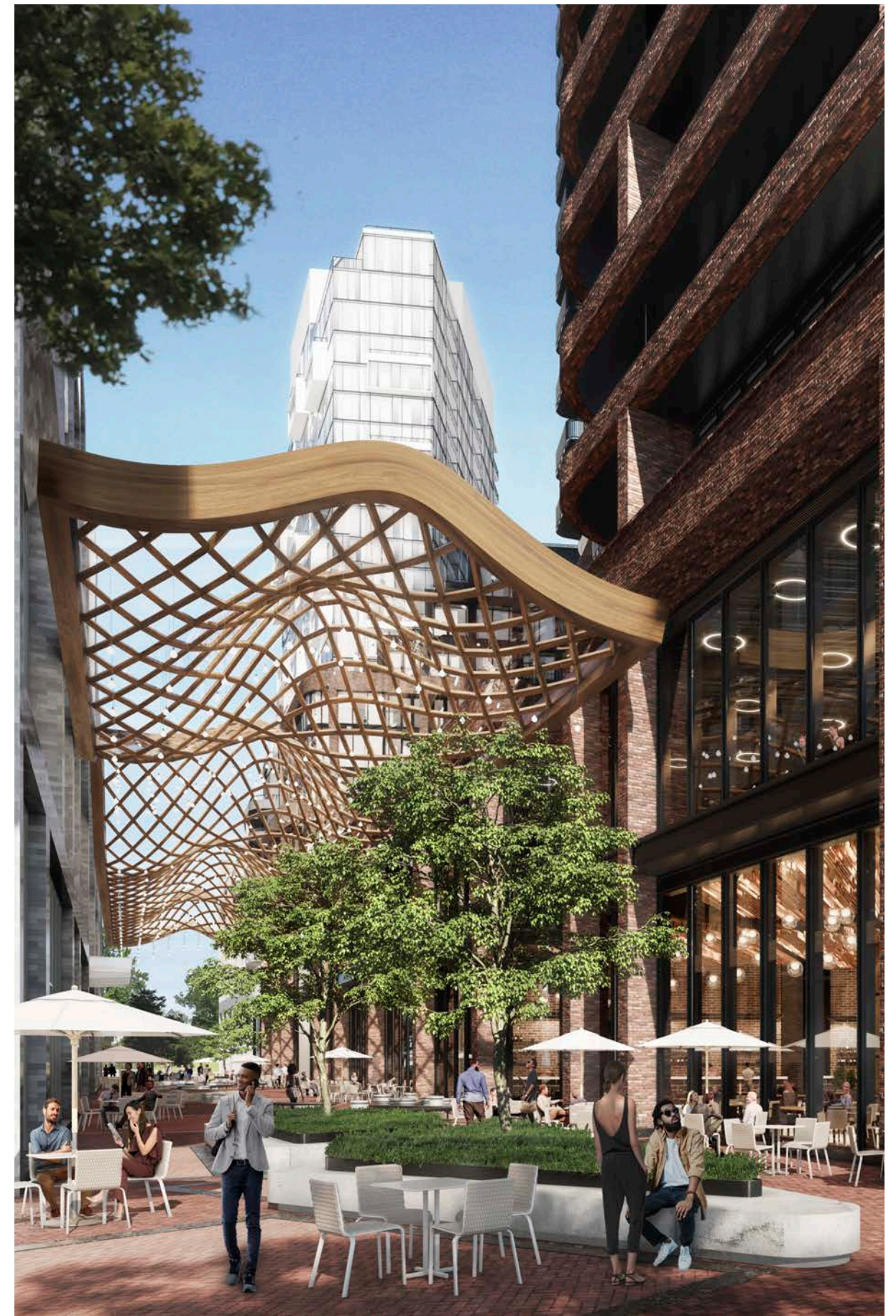
The eight residential buildings feature plenty of choice, including studios, one-bedroom, two-bedroom, and three-bedroom suites that offer sophisticated, modern design, a leading-edge technology package and all the amenities you could ever imagine right outside your door.



## A CONNECTED COMMUNITY

Galleria's wide, open, pedestrian-friendly streets and pedestrian mews criss-cross the new district, connecting to the established family neighbourhoods around it. With area residents easily able to come and go from the park, the community centre, outdoor gathering spaces and amazing shops and retailers, Galleria is a safe and welcome connection point for the entire neighbourhood – and visitors from all over the city.

Cyclists have top priority, too. It's easy to get to and from Galleria along cycling routes such as the bike lanes on Bloor Street, and the new cycling loop in the park.





## CENTRAL GATHERING SPACE

Points Plaza, located at the heart of Galleria on the Park, will be a gathering space for everyone. Featuring restaurants and stores, with patios spilling out onto the sidewalk, it will foster a dynamic, active and cheerful scene. Look forward to outdoor dining, farmers' markets, street vendors, and street festivals.

Creating a truly enjoyable pedestrian experience and highlighting the unique character of the area were key considerations in the design of the public realm at Galleria on the Park.

The diagonal connection of the Mews to the privately owned public spaces (POPS) was a critical move to bringing people into the heart of the community; the POPS is where the community comes together. It offers a space where you can choose to stay and enjoy the views of the Park and Mews, or move on to the amazing park and all it has to offer.

### Woonerf

A pedestrian and bike-friendly street, where cars can only drive at walking pace. Galleria will have a woonerf to enhance the safety of pedestrians and cyclists.





## THE GALLERIA STORY CONTINUES

Phase 1 of the Galleria on the Park master plan is now well underway, with Galleria 01 and Galleria 02 residence towers under construction. Galleria III is the latest chapter in the story of Galleria, and it will be the third tower built in this already very successful master-planned community.

### Galleria Fun Facts

- 8-ACRE PARK
- 300,000 SQ.FT. RETAIL
- 20,000 SQ.FT. OFFICE SPACE
- 3 PARK HEARTS
- 3,595 BIKE PARKING SPACES
- 8 RESIDENTIAL BUILDINGS
- HOME TO MORE THAN 6,000 RESIDENTS





---

# PLAY AS ONE

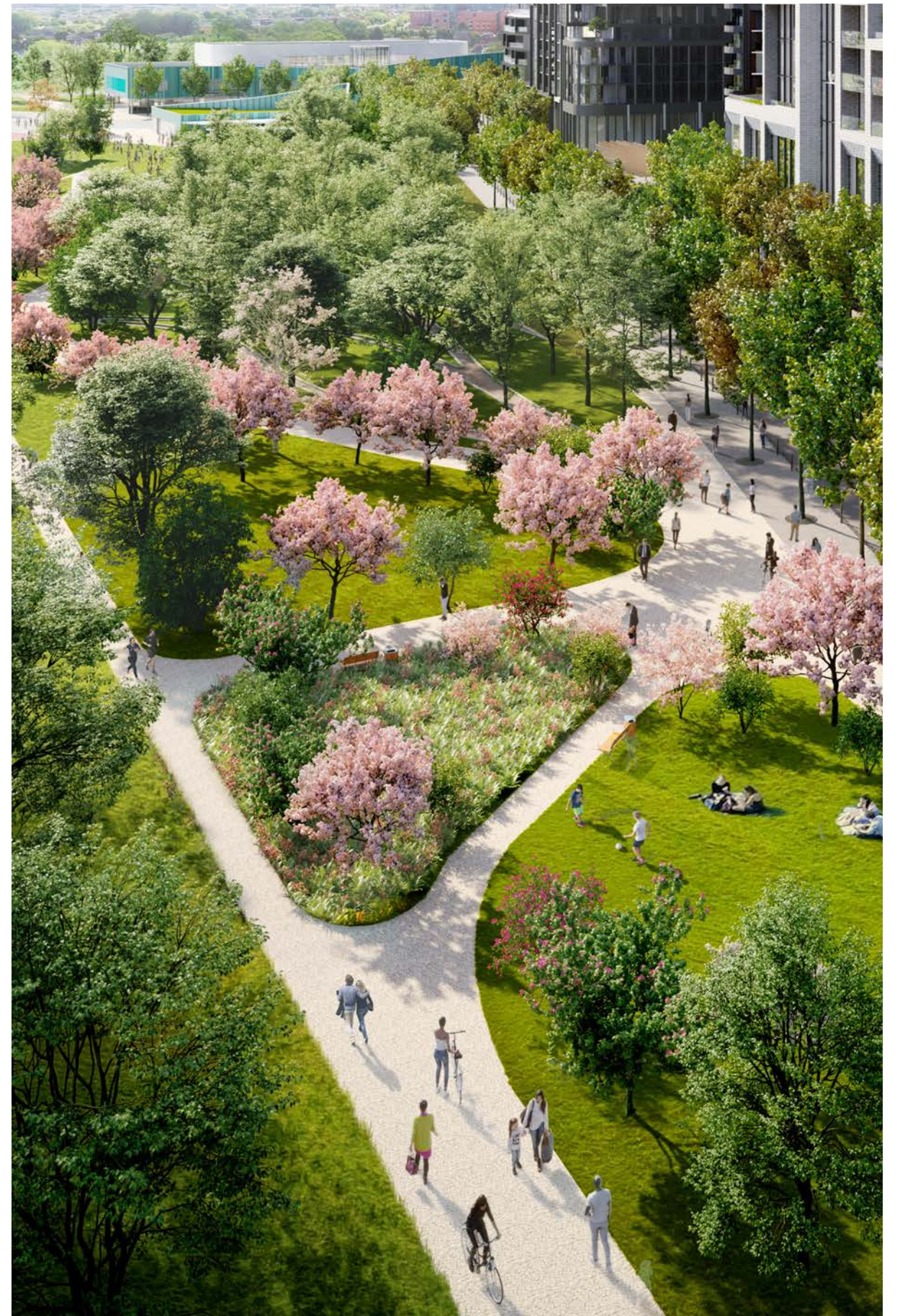
# PLAY

## A PARK WITH HEART

Encompassing the most enlightened urban planning features of this century, Wallace Emerson Park is being enlarged to nearly 8 acres. Phase 1 of the park redesign is in progress now.

Wallace Emerson Park

**8 acres**





## A park for everyone

You'll want to spend a lot of time in the inviting new park. Whether simply relaxing under the trees, hosting a picnic, or playing ball with the kids, you'll love this large and revamped green space, designed to maximize sunlight and south views of the Toronto skyline.

### A park for everyone, that is planned to include three multi-functional spaces\*:

**The Community Heart** surrounds the new community centre at the west end of the park, and features a BMX/skateboard park, a multi-use sport court, and skating pad, along with a skating trail.

**The Play Heart**, at the centre of the park, is a multi-use green field with a hill that invites all Torontonians of all ages to gather and play.

**The Nature Heart**, at the east end of the park, has a treed canopy and meandering pathways for wandering and relaxing in a natural setting.

\*Planned by City for future implementation but outside scope of development commitments by developer.

# SHOP

## VIBRANT RETAIL

Phase 1 is already under construction, and future retail includes an exhilarating range of planned shops and services — including a grocery store, one-of-a-kind boutiques, restaurants, and cafes. Spread out over 300,000 square feet, this vibrant retail will provide the ultimate lifestyle, with convenience and excitement attracting visitors from all over the GTA. Modern office spaces will offer inspiring places to work.

Retail Space

**300,000** SQ. FT.









## New community centre for everyone

The new community centre, planned with community wellness in mind, will be one of the largest in Toronto. This state-of-the-art oasis will offer an array of indoor and outdoor spaces for rejuvenating, relaxing and socializing.

GYM

MULTI-PURPOSE ROOMS

COMMUNITY KITCHEN

OUTDOOR SKATING TRAIL

SWIMMING POOLS

DANCE STUDIO

RUNNING TRACK

FULL FITNESS FACILITIES

CHILD CARE CENTRE

PLAYGROUND

GREEN ROOF

## GALLERIA III: THE NEXT CHAPTER

Introducing Galleria III, the third chapter in the Galleria on the Park story. A design-forward condominium tower with 21,000 square feet of amenities geared to your well-being, Galleria III will be a new landmark at Dupont and Dufferin. This boldly architected 31-storey residence will offer just over 400 units, from studios to three bedrooms, in spacious and carefully conceived floorplans, with park or city views.





Rendering is artist's interpretation only.

## AHEAD OF THE CURVE

For an architect designing a new building, a vintage radiator can be more than just an old heat source — it can be creative inspiration for key materials and motifs used in the building's construction. That's exactly how architectural firm Hariri Pontarini Architects approached the design of Galleria III. Wishing to base the look and feel of the residence tower on classic industrial heritage style, the architects explored old materials used in the area when it was an industrial heartland. The result is an elegant and welcoming building. A base of red brick ties in to the character of the area, with 31 storeys of patterned metal and glass rising above the park below.

The charming, antique Flatiron building style also played a part in the design, its rounded edges transposed into Galleria III's ubiquitous curves. Embossed metal panels, balconies, and terraces with soft, round corners, metal pickets and other intriguing architectural details make this building one of the most design-forward to emerge in 21st century Toronto. The gateway to Galleria on the Park, the unique edifice of Galleria III is destined to be admired for decades to come.

## INDUSTRIAL ROMANCE

In designing spaces for the residents of Galleria III, DesignAgency was inspired by the site's history as a thriving centre of industry - and the singular vision of the architects from Hariri Pontarini. Delicate applications of utilitarian-style hard metal instill a contemporary, sophisticated effect.

The signature curves on the exterior of the building are woven into the interiors, with curved archways, balconies, curved furniture in amenity spaces, and curved kitchen accents. From the double-height, hotel-style lobby with its curved walls and rich furniture, to the suites with their rounded balconies, the interior design is infused with a dynamic that balances sleek futurism with golden age nostalgia.

Steeped in the enlightened style of Industrial Romance, interiors are designed to enhance the creative impulse, to foster connection to art and expression. Time-honoured classics mixed with contemporary detailing create a luxury feel and a relaxing environment. Two floors of amenities provide spaces where you can readily connect with other people or enjoy quiet time alone.

For your suite kitchen and bathroom, three distinct colour palettes are available to suit your personal style: Light and bright; black and white; and grey on grey.





## AMENITIES DEDICATED TO WELLNESS

At Galleria III, wellness anchors the community, and that's why we've dedicated two floors to amenities that foster a sense of well-being. The third floor is the wellness floor, and here you'll find a fitness room, spa circuit including steam room, rain shower, and sauna, along with indoor and outdoor spaces to play, work, relax, and walk your dog. On the 11th floor, you'll find social amenities, including a social lounge, private dining room with Chef's kitchen, outdoor lawn games area, and swimming pool.



## FLOOR 3 WELLNESS AMENITIES

1. FITNESS ROOM
2. POST-WORKOUT RELAXATION
3. SEPARATE SPINNING ROOM
4. MEDITATION ROOM
5. SEPARATE YOGA ROOM
6. OUTDOOR YOGA
7. LOUNGE SEATING
8. PETS' PLACE
9. SPA CIRCUIT
10. THE WORKSHOP
11. CO-WORKING LOUNGE
12. KIDS' PLAY ZONE



## FLOOR 11 - SOCIAL AMENITIES

1. SWIMMING POOL
2. OUTDOOR TERRACE
3. POOLSIDE LOUNGERS
4. PRIVATE DINING ROOM WITH CHEF'S KITCHEN
5. KIDS' CLUB
6. SOCIAL LOUNGE
7. OUTDOOR LAWN GAMES AREA
8. RESERVABLE OUTDOOR DINING



---

# EXPERIENCE AS ONE





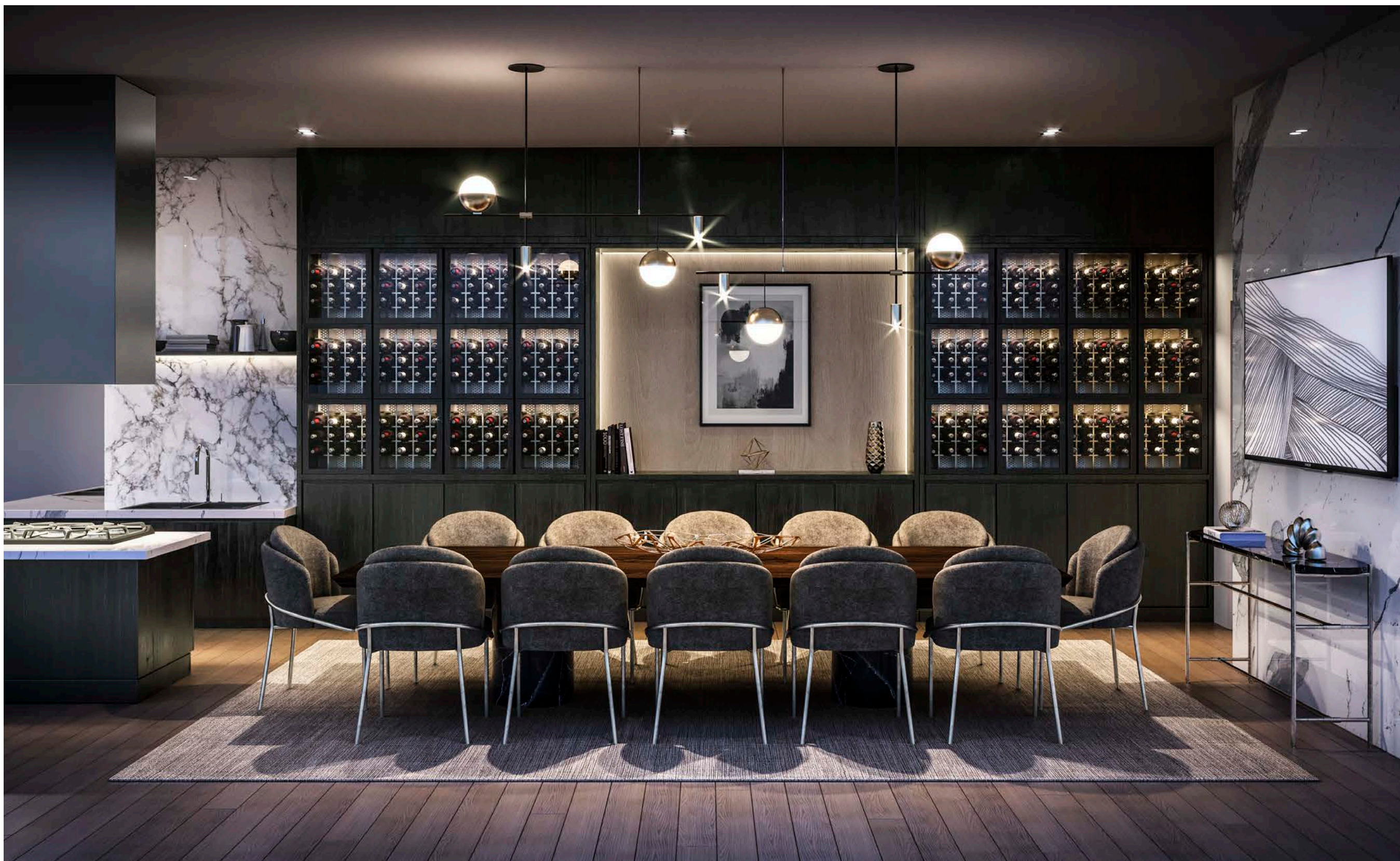
## GRAND LOBBY

The elegant double-height lobby sets the tone for Galleria III, welcoming residents and visitors with its curvaceous furniture and sleek marble finishes.



### POOLSIDE WITH LOUNGERS

On sunny summer days, lounge in comfortable seating beside the pool or swim laps above the treetops.



## PRIVATE DINING ROOM

Mark any occasion with a delicious dinner cooked in the Chef's kitchen and served in the spacious private dining room.



## OUTDOOR TERRACE

Warmed by the fire as the sun goes down, confidences can be shared and stories told in the partitioned spaces on the outdoor terrace.



## SOCIAL LOUNGE

Relax, play pool, and enjoy your favourite drink. With sweeping views of the city, this spacious lounge ignites good times among friends and family.



## CO-WORKING LOUNGE

Working from home doesn't always mean staying in your suite. Extend your comfort zone into the congenial co-working lounge.



## FITNESS CENTRE

There's no need to join a gym, with a state-of-the-art fitness centre, private spin studio, and indoor and outdoor yoga space only steps from your suite.



## THE WORKSHOP

Arts, crafts, and DIY work all find a home base in this unique space that's geared up for creating masterpieces and repairing whatever is broken.





## SPA CIRCUIT

Offering the ultimate in relaxation and rejuvenation, this serene space features a steam room, rain shower, and sauna.



## KIDS' CLUB

Your little ones will find their sweet spot here — a cool place to play, chill out with a favourite book, work on artwork, and make new friends.



## LIVING ROOM

Come home to comfort and style — your living room is a showcase of modern, elegant style, with the most up-to-date flooring and lighting, and beautiful views.



## KITCHEN

Seamlessly integrated with the living and dining area of your suite, the kitchen is a marvel of masterfully crafted design, featuring curves, natural materials, and contemporary appliances.



Views will be affected by future construction, the directional orientation and floor height of the unit purchased. Consult with your sales representative for further details.

**SOUTHWEST VIEW**



Views will be affected by future construction, the directional orientation and floor height of the unit purchased. Consult with your sales representative for further details.

**SOUTHEAST VIEW**



Views will be affected by future construction, the directional orientation and floor height of the unit purchased. Consult with your sales representative for further details.

## NORTH VIEW



Views will be affected by future construction, the directional orientation and floor height of the unit purchased. Consult with your sales representative for further details.

# EAST VIEW





Views will be affected by future construction, the directional orientation and floor height of the unit purchased. Consult with your sales representative for further details.

# WEST VIEW



---

LIVE  
AS ONE

## LOCAL ARTISTS ADD COLOUR

The new Galleria on the Park is an art-focused site, and we're excited to spotlight local artists as we work toward fulfilling the dream of a warm, local-oriented community.

To add vibrant colour, life, and expression to the Galleria on the Park site, we have partnered with local artists, Thrush Holmes and Jacquie Comrie. Thrush Holmes has transformed the iconic Galleria pylon at the corner of Dufferin and Dupont into a mixed-media public art installation with a positive message and hand-painted six rainbow murals along the north-side walls of the Galleria Mall. At Dupont and Dufferin, Jacquie Comrie has created a visually powerful mural that uses colour as a tool for wellness and mental well-being.





## CONVENIENCE AND CONNECTIVITY AT THE MEWS

Grab a coffee at a cafe. Meet a friend for ice cream on a patio. Or shop for the latest fashions. No matter what you're looking for, you'll find it, just steps from your home at The Mews, Galleria's European-style pedestrian-only shopping street.

Not only does your community at Galleria on the Park provide a vibrant range of shops and services, it also offers almost 20,000 square feet of open, airy professional offices, studios and flex spaces.

### Walk to work

Whether you choose to work from home or take advantage of the inspiring workspaces right on site, you'll always feel connected to your community.



---

# CONNECT AS ONE



9

23

34

47

80

86

94

109

117

122

## ACCESS YOUR CITY

Designed to make getting around on foot and by bike easy, Galleria on the Park also has the TTC and airport connections you need.

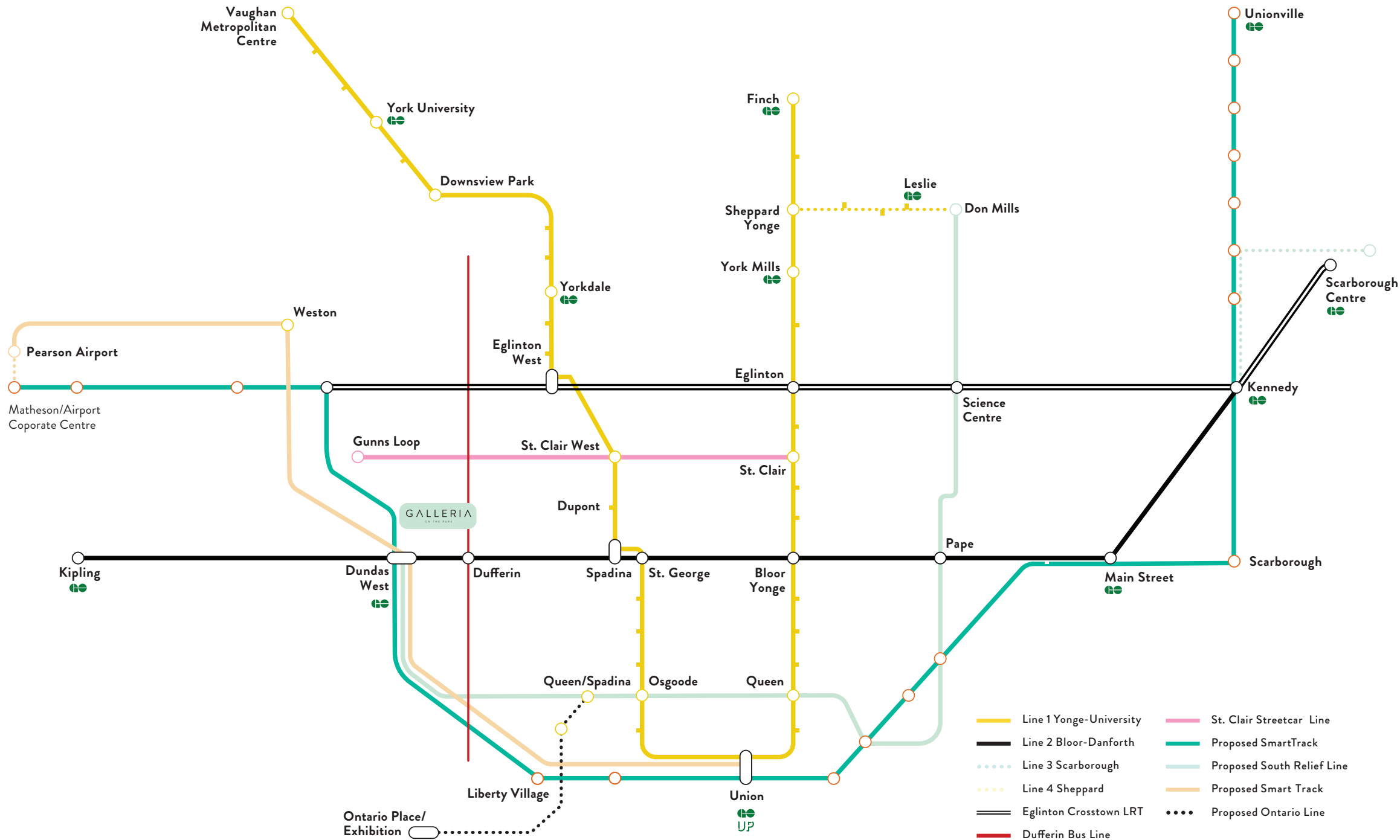


Minutes to Financial District

30 MINS

Transit score

85



### TTC

The #29 Dufferin bus runs 24 hours a day, south to the lake, and north to North York, with a stop at Yorkdale Mall. Dufferin station is just 5 minutes south by bus, giving you access to Line 2 of the subway Bloor Danforth line. The #26 bus runs along Dupont between St. George Station and Jane Station.

TTC buses will also travel through the Galleria on the Park district, making public transit safer and more convenient.

### Biking

Galleria's thrilling new park will incorporate cycling lanes that connect to the city's existing infrastructure for cyclists. You'll be able to ride from home to the bike lanes on Lappin, Dupont, Davenport, and Bloor.

### Highways

Dufferin Street takes you south and connects you to the Gardiner Expressway.

### Walking

Galleria on the Park has a walk score of 92, which means everything you need to access is on your doorstep. For exercise and as a viable transportation option in itself, you can easily walk south to Bloor or north to St. Clair, and along Dupont in either direction. And from your suite, it's only a 1-minute walk to the closest bus stop.

### Union-Pearson Express

Need to catch a flight from Pearson Airport? The Union-Pearson (UP) Express train makes a stop right next to the Dundas West subway station. You can also take a quick trip on the UP to Union Station in the Financial District.



## BACK IN THE DAY

The Galleria site has transitioned through the ages from forest to industrial heartland, to 1970s shopping mall, and now an unprecedented, mixed-use, city park community.

In the early 1900s, the site began to house a succession of large factories that turned out the most in-demand products of the day. This area was the focus of intense industrialization – raw materials were shipped in by train on the new east-west railway corridor, and shipped out as finished goods.

### PRODUCTS MANUFACTURED ON THE GALLERIA SITE

CURTISS CANADA  
AIRCRAFT OPERATIONS  
MADE WORLD WAR 1  
AIRPLANES

## 1900s

COLUMBIA  
GRAMOPHONE  
COMPANY PRODUCED  
GRAMOPHONES

## 1919-25

DODGE AND CHRYSLER  
MANUFACTURED CARS

## 1925-72

---

# ENJOY AS ONE







**DISCOVERING THE NEW DUPONT**



## THE REAL DEAL

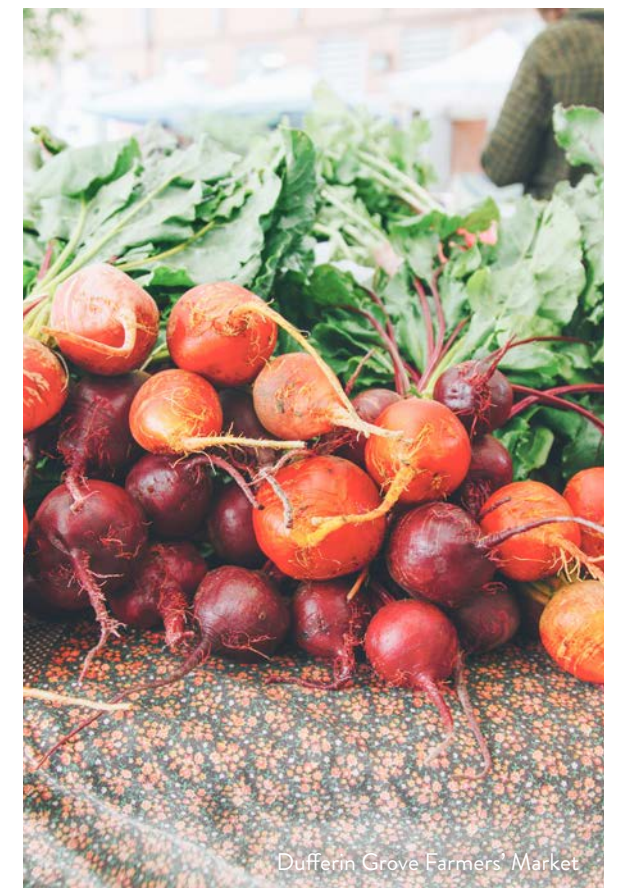
It's people that make a place, and people with their infinite ideas are remaking the Dupont corridor, converting its former factories into welcoming social, work, and entertainment spaces.

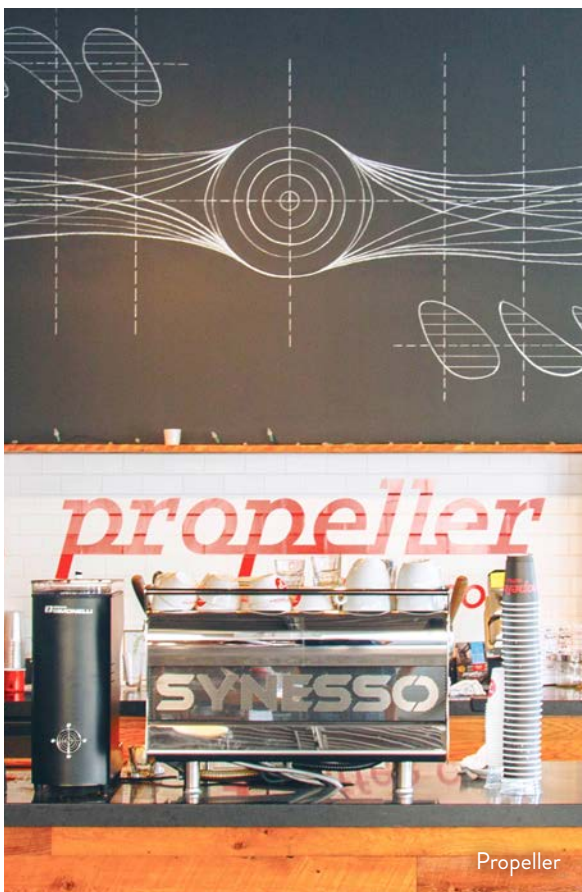
The new Dupont's art galleries, restaurants, brew pubs, cafes, and restaurants are exerting an irresistible pull on Torontonians from across the city who are looking for something unique and heart-felt.

## WHERE TO FIND FLAVOUR

A head-spinning universe of flavours surrounds Galleria on the Park. Travel in any direction, and you're guaranteed to find a place with exactly the kind of food and drinks you crave – including top-drawer grocery stores for all the ingredients and fresh produce you need to stock your kitchen. When it comes to food and drink, you're in the perfect spot.

Geary Avenue, just north of Galleria on the Park, is one of those rare urban destinations that evolves organically when a few artists and entrepreneurs move into former industrial spaces and convert them to studios, cafes, and galleries.





Propeller



Forno Cultura



Burdock Brewing



Henderson's Brewing



## LIVE IT UP



## RESTAURANTS

1. Osteria Rialto
2. Conzo's Pizza
3. Vena's
4. Sugo
5. Rush Hour
6. Forno Cultura
7. Drake Commissary
8. Defina Wood Fired
9. Love Chix
10. Mattachioni
11. Famiglia Baldassarre
12. Parallel
13. North of Brooklyn Pizzeria
14. Farmhouse Tavern

## BARS

15. The 3 Speed
16. Seoul Shakers
17. Bar Neon
18. Civil Liberties
19. Farmhouse Tavern
20. Mulberry Bar
21. Paradise Grapevine
22. Bar Biltmore
23. The Greater Good

## CRAFT BREWERIES &amp; DISTILLERIES

24. Henderson Brewery
25. Burdock Brewery
26. Halo Brewery
27. Blood Brothers Brewing

## COFFEE &amp; TREATS

28. Café Con Leche
29. Dark Horse Espresso Bar
30. The Common
31. Wallace Espresso
32. Propeller Coffee Co.
33. Starbucks
34. Contra Café
35. Nova Era Bakery

## FOOD AND GROCERY STORES

36. Freshco: Galleria
37. Fiesta Farms
38. Food Basics
39. Loblaws
40. Sobeys
41. No Frills



## ARTISTIC EXPRESSIONS

The new Dupont is a thriving centre of artistic expression, with galleries showcasing the best of Toronto's up and coming creators of innovative art. You can easily spend a whole day visiting all the galleries in the area -- and who knows? Perhaps you'll find something amazing to hang on your wall.



### COOPER COLE GALLERY

1134 Dupont

### ANGELL GALLERY

1444 Dupont

### ERIN STUMP PROJECTS

1558 Dupont

### DIVISION GALLERY

45 Ernest Ave.

### SCRAP METAL GALLERY

11 Dublin St. E.

### CLINT ROENISCH GALLERY

190 St. Helens Ave.

### MERCER UNION

1286 Bloor St. W.

### XSPACE CULTURAL CENTRE

303 Lansdowne Ave.

### MOCA TORONTO

158 Sterling Rd.

### PARADISE THEATRE

1006 Bloor St. W.



# MOVE AS ONE

## PARK YOURSELF

Newly expanded Wallace Emerson Park is right outside your door at Galleria, but you can also explore several other parks in the area. Walk, bike, or TTC there for the open spaces and greenery.



### WYCHWOOD BARNS PARK

Skating, sports field, picnic area, beach volleyball court

### CAMPBELL PARK

Skating and soccer: 225 Campbell Ave.

### CHRISTIE PITTS PARK

Skating, swimming pool, baseball diamond & more: 750 Bloor St. W.

### EARLSCOURT PARK

Running track, sports field, picnic area: Lansdowne & Davenport

### DOVERCOURT PARK

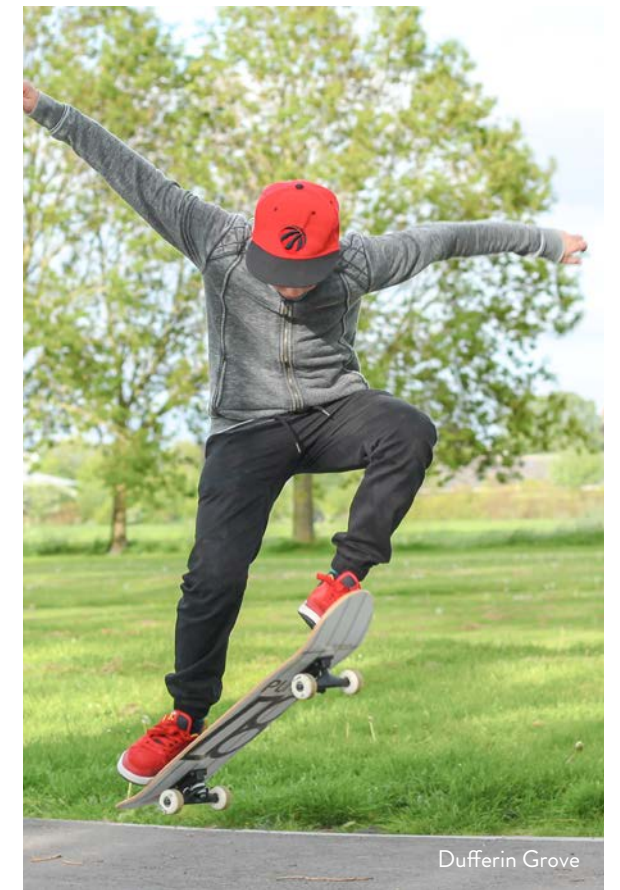
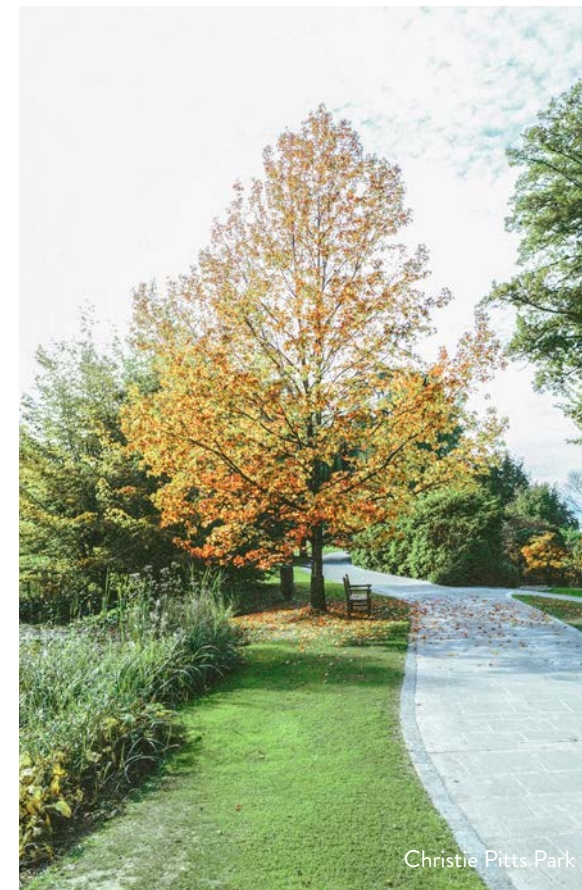
Tennis courts, splashpad, playground, and tree cover: 155 Bartlett Ave.

### DUFFERIN GROVE

Skating, playground, basketball courts, picnic areas, tree cover, Thursday farmer's market year 'round: 875 Dufferin St.

### GEARY AVENUE PARKETTE

Garden, kids' playground, wading pool: 15 Geary Ave.







Boulderz Climbing Centre

## GET PHYSICAL

Whatever your fitness passion, you'll find fantastic options in the new Dupont area. Box, take a yoga class, learn martial arts, rock climb, and more. The neighbourhood has a high concentration of businesses oriented to wellness. Check each venue's website to explore their online and in-person offerings; all are taking health and safety precautions, and welcoming new practitioners.

### YOGA

Archa Mati's Yoga For Life  
990 Dovercourt Rd.

Yoga Mix  
1444 Dupont St.

Union Yoga  
956 Bloor St. W.

Liberty Movement & Wellness  
983 Dovercourt Rd.

### BOXING

Sully's Boxing & Athletic Club  
1024 Dupont St.

United Boxing Club  
1034 Bloor St. W.

### MARTIAL ARTS

Shark Muay Thai  
213 Geary Ave.

Zirger Academy Martial Arts  
927 Dupont St.

### CLIMBING

Boulderz Climbing Centre  
1444 Dupont St.

### SKATING / BMX

Dufferin Skating Rink  
Dufferin Grove Park

## ESSENTIAL SERVICES

Any time you need to take care of personal business – from getting your bike fixed to meeting with a financial services rep – you're close to all kinds of services, with people ready to help you.

### BIKE REPAIR SHOPS

Sweet Pete's Bike Shop: 1204 Bloor St. W.  
 Bike Depot: 1222 Bloor St. W.  
 Riders Cycle and Board: 386 Harbord St.  
 Dave Fix My Bike: 254 Christie St.

### LIBRARIES

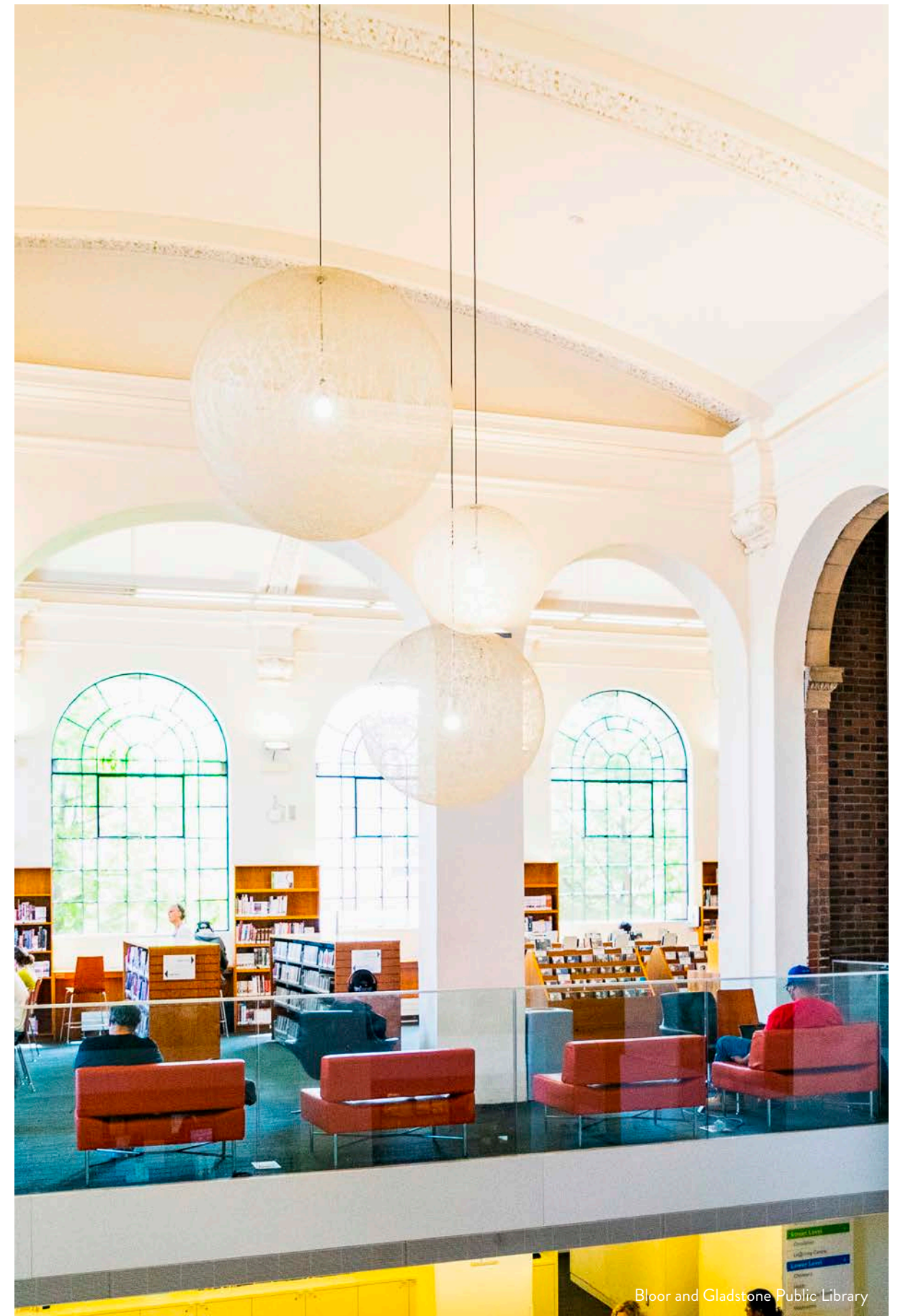
Bloor and Gladstone Public Library:  
 1101 Bloor St. W.  
 Perth and Dupont Public Library:  
 1589 Dupont

### BANKS

TD Canada Trust: Galleria  
 Bank of Montreal: 1502 Dupont  
 RBC: 972 Bloor St. W.  
 Scotiabank: 992 Bloor St. W.  
 CIBC: 1129 Bloor St. W.  
 National Bank: 1295 St. Clair Ave. W.

### MEDICAL OFFICES & PHARMACIES

Rexall: Galleria shops  
 Dentistry on Dupont: 1375 Dupont  
 Shoppers Drug Mart: 1400 Dupont  
 Davenport Perth Neighbourhood  
 Community Health Centre: 1900  
 Davenport Rd.  
 Rollcare Medical services:  
 1254 Bloor St. W.  
 Main Drug Mart: 1130 Bloor St. W.  
 Bloor Lansdowne Dental Centre:  
 703 Lansdowne Ave.  
 Bloor Dufferin Rehabilitation Centre:



Bloor and Gladstone Public Library



---

# LEARN AS ONE

## SCHOOL DAYS

Whatever age your kids have reached and the style of teaching you prefer for them, you'll find a variety of educational institutions around Galleria on the Park.

### TORONTO DISTRICT SCHOOL BOARD

Dovercourt Public School  
228 Bartlett Ave.

Pauline Junior Public School  
100 Pauline Ave.

Essex Junior & Senior Public School  
50 Essex St.

Kent Senior Public School  
980 Dufferin St.

Bloor Collegiate Institute  
1141 Bloor St. W.

Regal Road Junior Public School  
96 Regal Rd.

### TORONTO DISTRICT CATHOLIC SCHOOL BOARD

St. Sebastian Elementary School  
717 Brock Ave.

St. Anthony Catholic School  
130 Shanly St.

St. Sebastian Elementary School:  
717 Brock Ave.

St. Mary Catholic Academy  
66 Dufferin Park Ave. W.

### POST-SECONDARY

George Brown College, Casa Loma Campus  
160 Kendal Ave.

Ryerson University  
350 Victoria St.

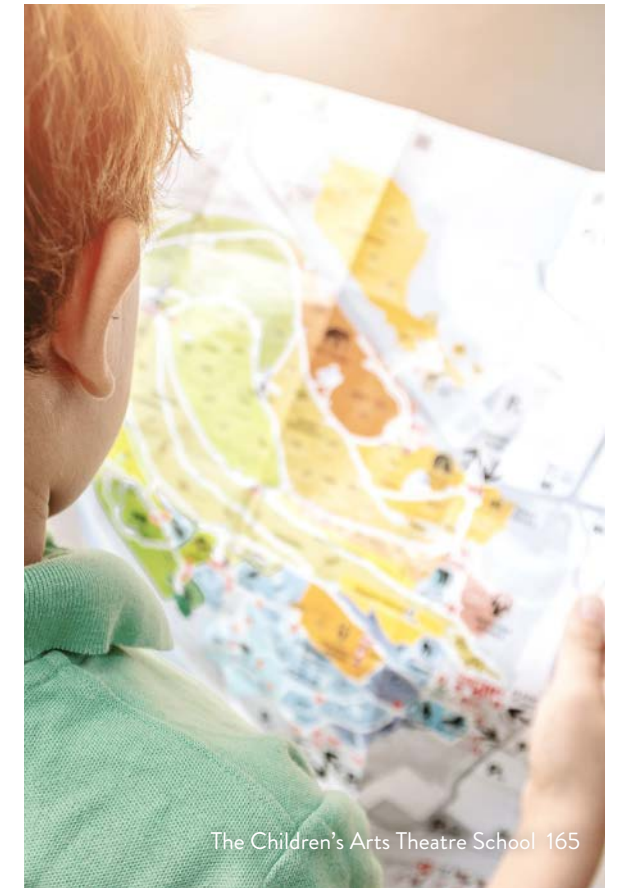
University of Toronto  
27 King's College Cir.

### EXTRACURRICULAR

The Children's Arts Theatre School  
165 Geary Ave.



Sebastian Elementary School



The Children's Arts Theatre School 165



Dovercourt Public School



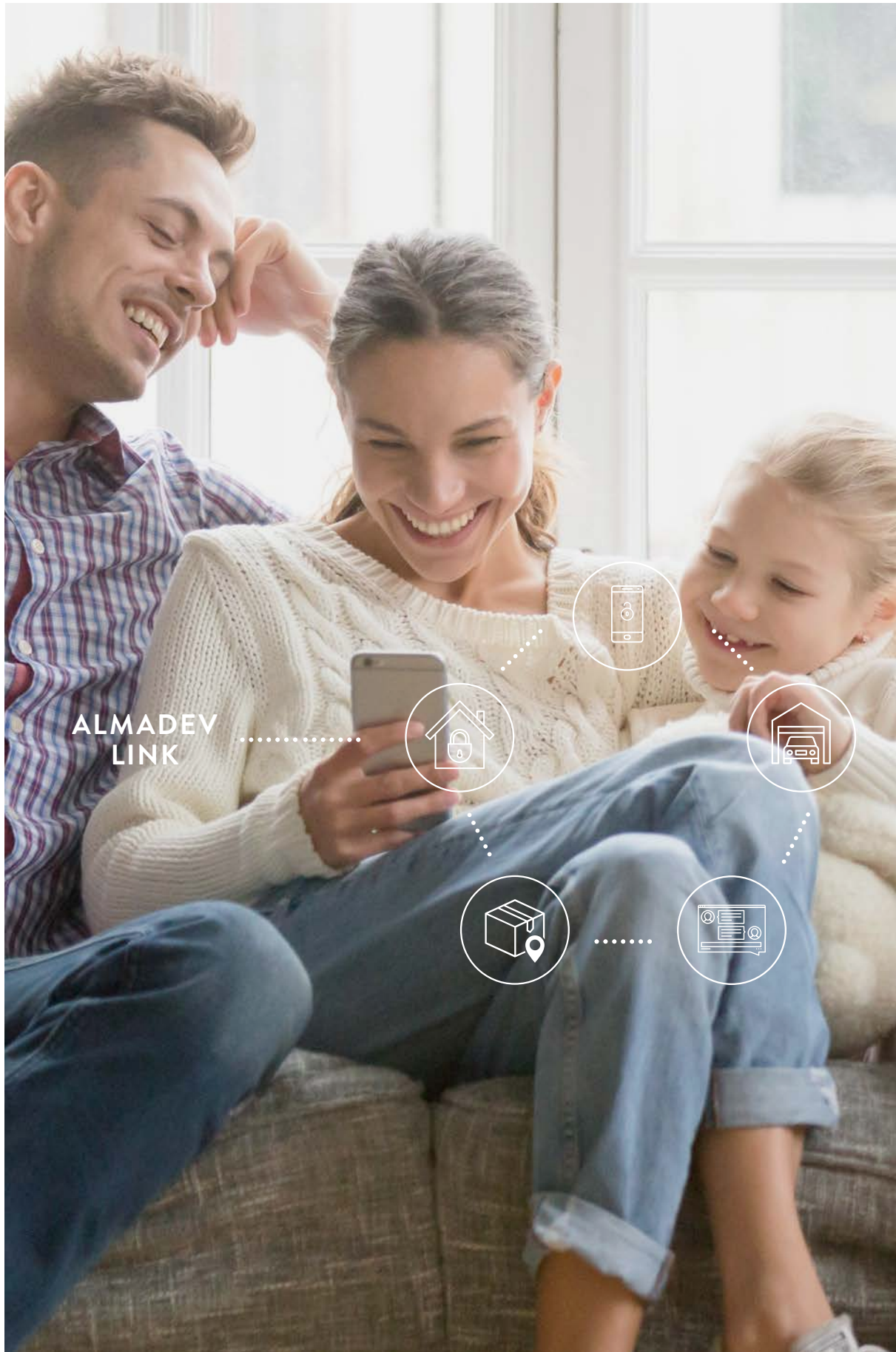
George Brown College



---

# DISCOVER AS ONE





ALMADEV  
LINK

## CONNECT AS ONE

Almadev Link, Galleria's innovative smart home package, is designed to make life easier for you, providing convenience, security, and peace of mind.

### LIVE SMART WITH THESE FEATURES

1. CONTROL YOUR HOME WITH YOUR SMARTPHONE
2. KEYLESS ENTRY
3. WI-FI CONNECTIVITY IN AMENITY SPACES
4. COMMUNITY RESIDENT APP
5. BOOK AMENITIES, USING THE APP
6. ACCESS TO ELECTRIC VEHICLE CHARGING STATIONS
7. ONLINE COMMUNITY BOARD
8. INDOOR BICYCLE STORAGE
9. INDIVIDUAL SUITE METERING FOR HYDRO & WATER

## TEAM

# almadev

The New Elad is here. Almadev is a multi-billion dollar real estate development, investment and asset management company with best-in-class master-planned communities and mixed-use properties across Canada and the United States. At Almadev, we have an impressive reputation of creating large scale, multi-phase development projects. Along with Agellan Commercial, we own over seven million square feet of industrial, commercial and retail properties.

For over two decades, Almadev has shaped and enriched communities through leadership and collaboration with a focus on delivering value and maximizing returns on our income-producing properties. We are strategic thinkers who foster long-term relationships by taking the time to listen to our communities, collaborate with stakeholders and engage experts who share our vision for building places that make our urban landscape better.

At Almadev, we build master-planned communities and manage assets across classes. We invest in a better tomorrow. We believe in our developments. We are here to foster a future you want to live , work and grow in.







## HARIRI PONTARINI ARCHITECTS

Hariri Pontarini Architects is a full-service Canadian firm dedicated to producing work of lasting value. Siamak Hariri and David Pontarini founded the Toronto office in 1994, motivated by a shared commitment to design quality. Today their 150-person practice offers its clients in-depth partner involvement through all stages of design and the breadth of building experience and technical expertise to rigorously oversee construction.

## DESIGNAGENCY

DesignAgency is an award-winning international design studio. Founded in 1998 by partners and long-time friends Allen Chan, Matt Davis, and Anwar Mekhayech, the Studio unites interior design, architectural concept, strategic branding, and visual communication in a unique and innovative way. DesignAgency is one of the most distinguished design studios in Canada and our services are widely sought after.

## JANET ROSENBERG & STUDIO INC.

Janet Rosenberg & Studio Inc. is one of Canada's most distinguished landscape architecture and urban design studios. The Studio is recognized for its extensive and award-winning portfolio of work that includes public, commercial, and institutional spaces as well as private residential gardens, green roofs, and condominium towers.

All renderings are artist's impression only. Do not represent any condition at present, or in the future, which may obstruct or impede the views, including current or future construction plans by the developer or others. Certain design elements are subject to change. Some descriptions and renderings in the brochure include details or images of a planned building or feature within the development or associated with the development (such as the community park), which are still in the development stage and subject to further approvals. The inclusion of these descriptions and renderings demonstrates our current vision for the community but does not represent a guarantee that the final build-out will be the same as described or as shown. This is the planned size of the new community centre. (\*) Certain parts of the park will be developed by the City of Toronto. The Community Heart is part of the Galleria development but the Play Heart and the Nature Heart are areas planned by the City for future implementation.