

Breanna Urquhart
Selected Works 2025



Contact Information—

Breanna Urquhart Studio LLC
office@breannaurquhart.com

1741 Silverlake Boulevard
Los Angeles California, 90027
United States of America

+1 917 251 0934

Biography —

Breanna Urquhart was raised in Lake Hawea, New Zealand (Aotearoa) and is a fully trained architectural designer and metalsmith.

Over the last 12 years Bre has accumulated a truly global portfolio, having lead award winning projects as Associate for multidisciplinary studio Snarkitecture in New York City, and most recently as Associate Director for leading Interior and Architecture studio, Knight Associates in Auckland, New Zealand.

Previous to holding these leadership positions she worked for internationally renowned firms Yael Reisner Studio, CRAB studio and learned her metalsmith craft with FACE Design & Fabrication in Brooklyn

Through this string of experiences she has accumulated a wealth of expertise working across luxury residential, retail, historic restoration, master planning, restaurant & gallery projects — all the while building an invaluable network of consultants, builders & makers that she continues to collaborate with.

In September of 2023, she launched her own practice, Breanna Urquhart Studio LLC, and is now based out of Los Angeles managing projects located on the two coasts of America, and the islands of New Zealand.

To every project she brings an empathetic and holistic design methodology that focuses on the creation of honest, materially rich, and enduring environments. She views architecture as the container through which harmony and peace are realized in daily life — a vessel for fostering positive social and cultural change.

The background features several thin, flowing, light purple lines that create a sense of movement and depth. These lines are organic and non-linear, weaving across the white space. The text is centered horizontally and vertically within the frame.

Architecture & Interiors



Kowtow Naarm

Australian flagship retail store design for leading sustainable fashion brand, Kowtow.

Studio —
Knight Associates

Status —
Completed October 2023

Press —
[Fashion Journal](#)

Personal Contribution —
Project Lead



Knight Associates has been fortunate to have worked with fashion label Kowtow from the very beginning of the brand's journey. Having previously designed the Wellington flagship and Newmarket retail environments we were delighted to take on the challenge of realising an Australian Flagship.

After a long search we settled on a 19th century, two-storey townhouse building nestled in Fitzroy's famous Gertrude street. The existing space had been home to a revolving retail space and atelier of a hat maker and was very tired. Our brief was to come up with tactile retail environment that celebrated

the domestic character of the existing spaces. The programme consists of; multiple merchandise spaces, repair programme workroom, fitting rooms, a lounge area, kitchenette & dining area, storeroom, showroom and an outdoor courtyard. A flexible planning strategy was critical to achieve a luxury retail experience that supports a work environment for Kowtow's Australian operations. The circular sustainability ethos was central to our design & build processes which lead to a restrained and natural palette consisting of certified Australian spotted gum, organic Tokushima washi paper and organic



Kowtow Naarm



Kowtow Naarm



Kowtow Naarm



Kowtow Naarm



Mahoenui Valley

Gut renovation & refurbishment of New Zealand’s most notable estate, for the Mowbray family.

Studio —
Knight Associates

Status —
Completed January 2024

Press:
[New Zealand Herald](#)

Personal Contribution —
Project Lead

Situated within a picturesque rural landscape, the property spans an expansive 22 hectares, encompassing a 2,300 sqm residential complex. Originally crafted by the architect Greg Noble, the estate has come to be one of New Zealand’s most notable properties.

The renovation seeks to honor the existing character of the property whilst introducing a contemporary palette and modern spatial organisation suitable for an entrepreneurial family. The final brief resulted in an extensive architectural refurbishment of the entire main residence, including multiple

formal and informal lounge spaces, a cinema room, office, conference room, presentation kitchen, butlers kitchen and main kitchen. The upper storey consists of renovations to seven bedroom suites.

The more complex aspect of the proposal included the conversion of an olympic-length lap pool into a 2-storey Wellness centre. Features includes a contrast therapy room, steam sauna, massage room & cryo chamber. Lastly, our scope included the replacement of the exterior pool and upgrades to the loggia, 3 bedroom cottage, and all interior furnishings.



Dining Room



Living Room



Bedroom Suite



Library



Loggia Kitchen



Wellness Centre & Pool



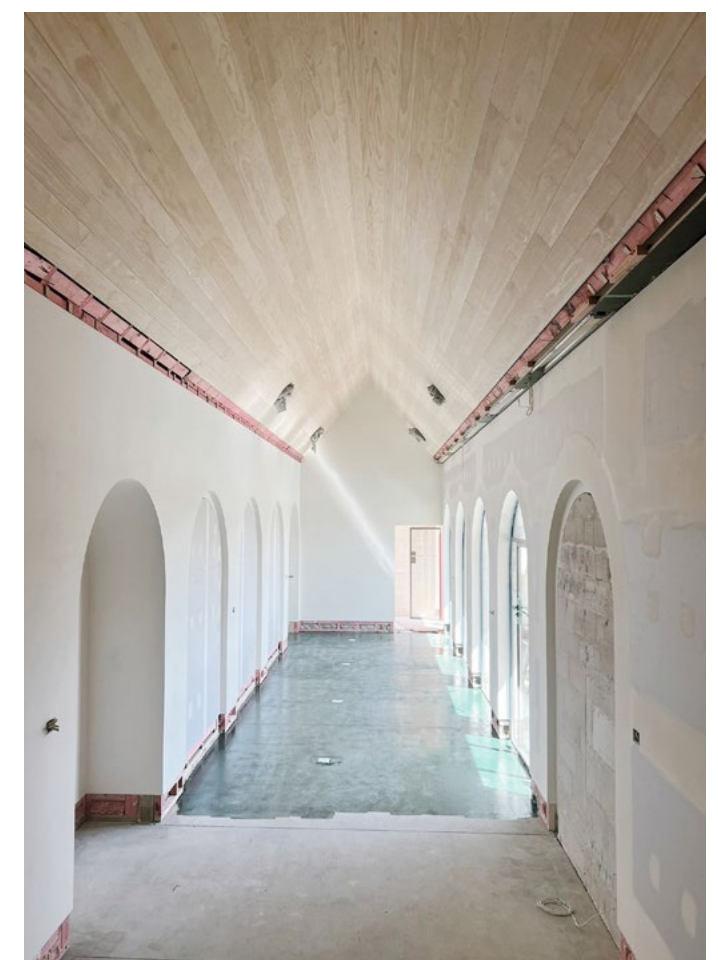
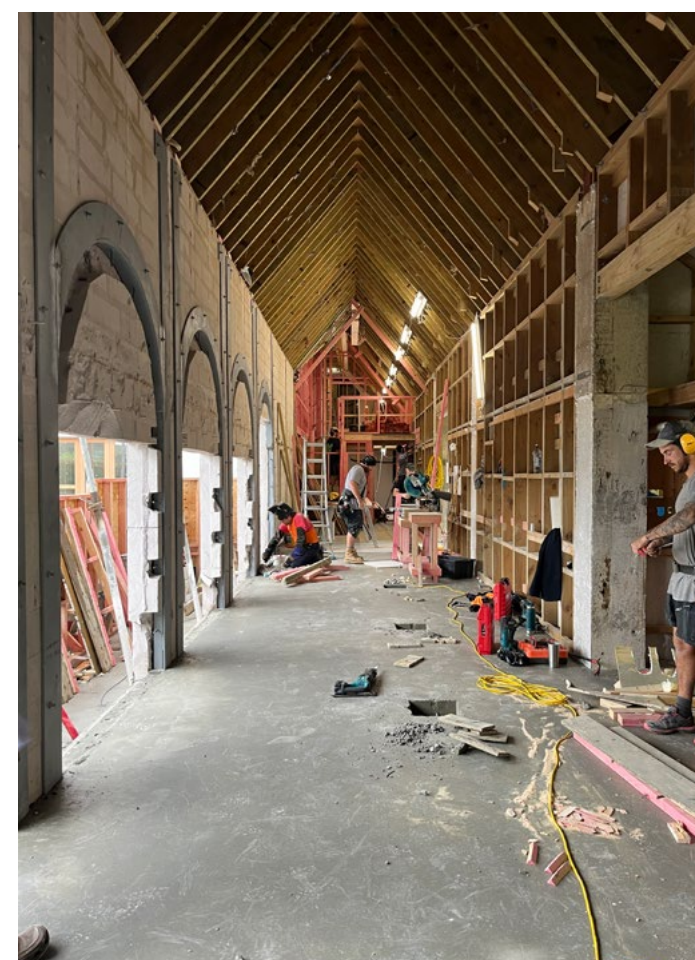
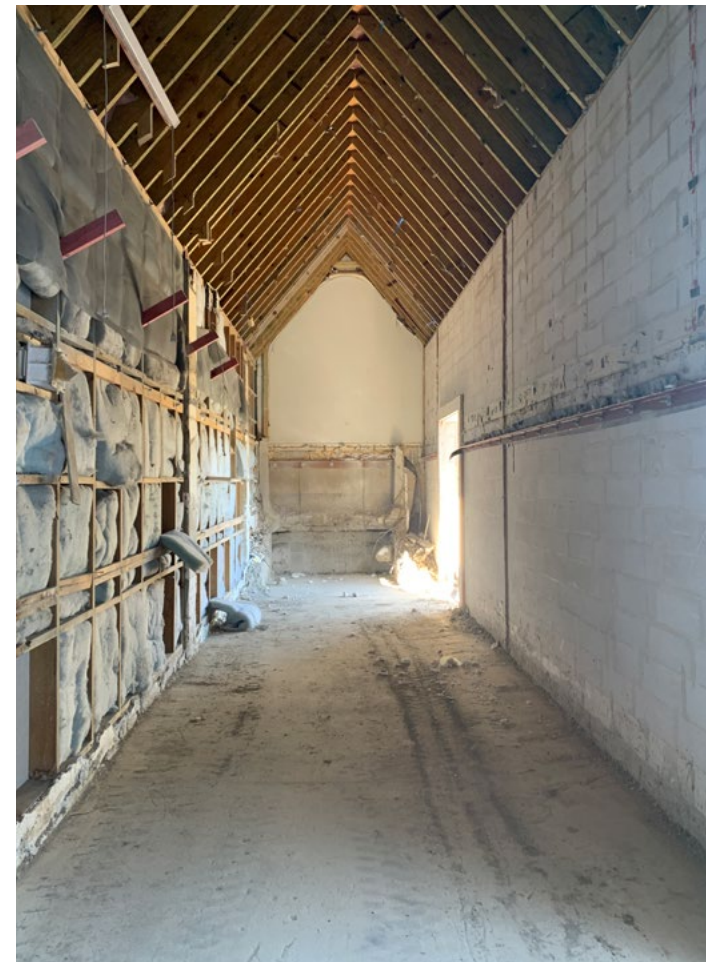
Wellness Centre



Wellness Centre



Wellness Centre Renderings



Wellness Centre Construction



Ballantyne Road

Reconstruction & extension of an existing Barnhouse in Lake Wanaka, New Zealand.

Studio —
Knight Associates

Personal Contribution —
Project Lead

Status —
Recently Completed

Nestled in the planes below Mount Barker, the verdant property with dramatic views encompass two barns (one dwelling, one workshop), a functioning vineyard and a small lake. The request was to restore and expand the interior of the 400sqm 3-storey 'green barn', to accommodate a family that enjoys the outdoors, art, literature & hosting.

The existing architecture made adept use of it's apertures to frame the breathtaking landscape, which in turn underpinned our approach to the material selections and spatial planning. The brief was concise; we were to provide an additional 100m2

of living space by extending the barn to the south. This allowed for the reorganising of the master suite, including a new en-suite at the top level, a larger kitchen, dining, and living room at ground level, and improvements to the guest suite at the lower level. Where possible recycled materials were procured, existing finishes were repaired and made use of within the new addition, and existing fixtures were reinstated.

In addition, decor items were procured and series of custom interior furniture and built-in pieces were developed in keeping with the barn's warm and rustic aesthetic.



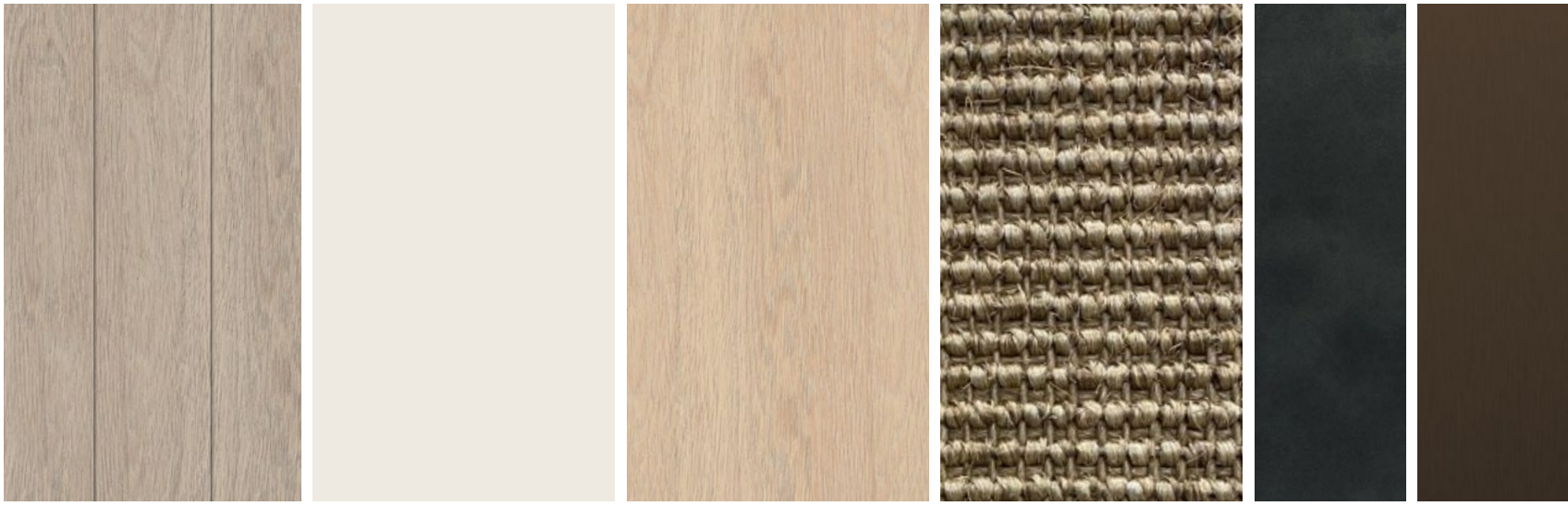
South Extension to the Green Barn



Green Barn becomes Grey Barn



Project Renderings



Engineered Oak floor boards Custom Prime Grade, Oiled, square edge finish Location: Floors	Paint Triple Rice Cake, Low Sheen Location: Walls	Oak veneer Oiled finish Location: Cabinetry	Sisal 100% Woven Location: Floor coverings	Stainless steel Blackened Finish Location: Bench top	Brass Dark Weathered finish Location: Hardware
--------------------------------------------------------------------------------------------------	---------------------------------------------------------	---------------------------------------------------	--------------------------------------------------	------------------------------------------------------------	------------------------------------------------------

Reference Imagery & Material Selection



Project Renderings

Reference Imagery & Material Selection



Arsham House

Restoration and gut renovation of an original 1960's Norman Jaffe home. Long Island, New York.

Studio —
Snarkitecture

Status —
Commenced November 2018, Completed July 2019

Personal Contribution —
Project Lead

Press:
[Architectural Digest](#)

Originally designed by Norman Jaffe in 1964, Daniel Arsham purchased this Long Island home as a weekend and summer escape for his young family. Our primary objective was to preserve and respect Jaffe's material language and the poetry between solid and void in creating new space for the children to play and Arsham's artwork to live.

On the main floor the existing two bedrooms, laundry and bathroom were converted into an expansive master suite to include an ensuite, walk in closet, study and a powder room for guests. On the lower level, two existing bedrooms and

one bathroom received a full upgrade and a new laundry room created. Most existing finishes were either repaired or matched however a custom-made terrazzo tile floor was introduced to breathe a contemporary energy into the home, bringing a playful illumination that contrasts the warmth of the cedar throughout. Lastly a new zen garden for the artist's sculptures wraps its way around the perimeter of the home

The project focused heavily on designing one-of-a-kind fixtures, furniture and finishes unique to the families interests and that sought harmony with Jaffe's monolith volume.



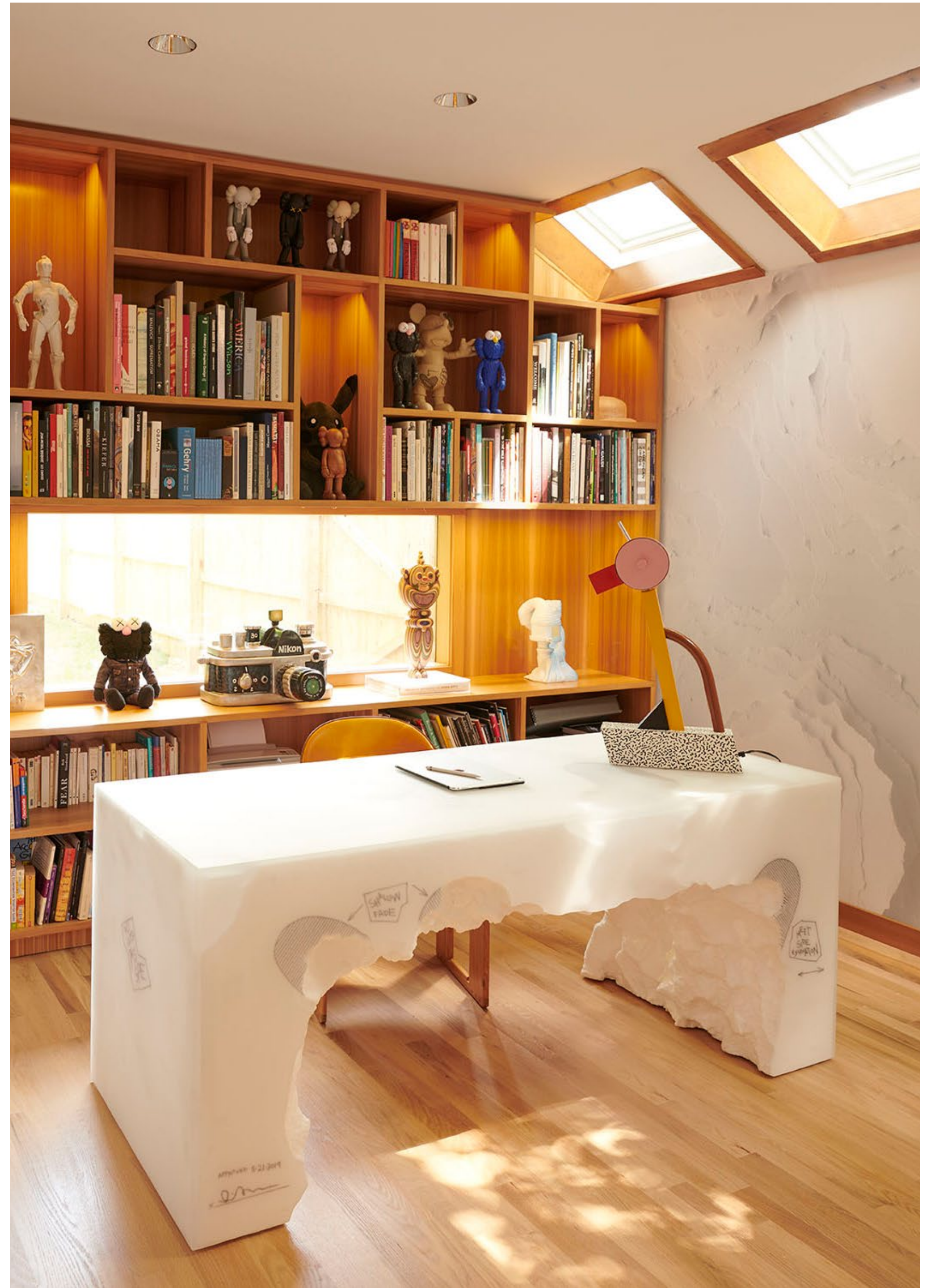
Exterior



Primary Bathroom



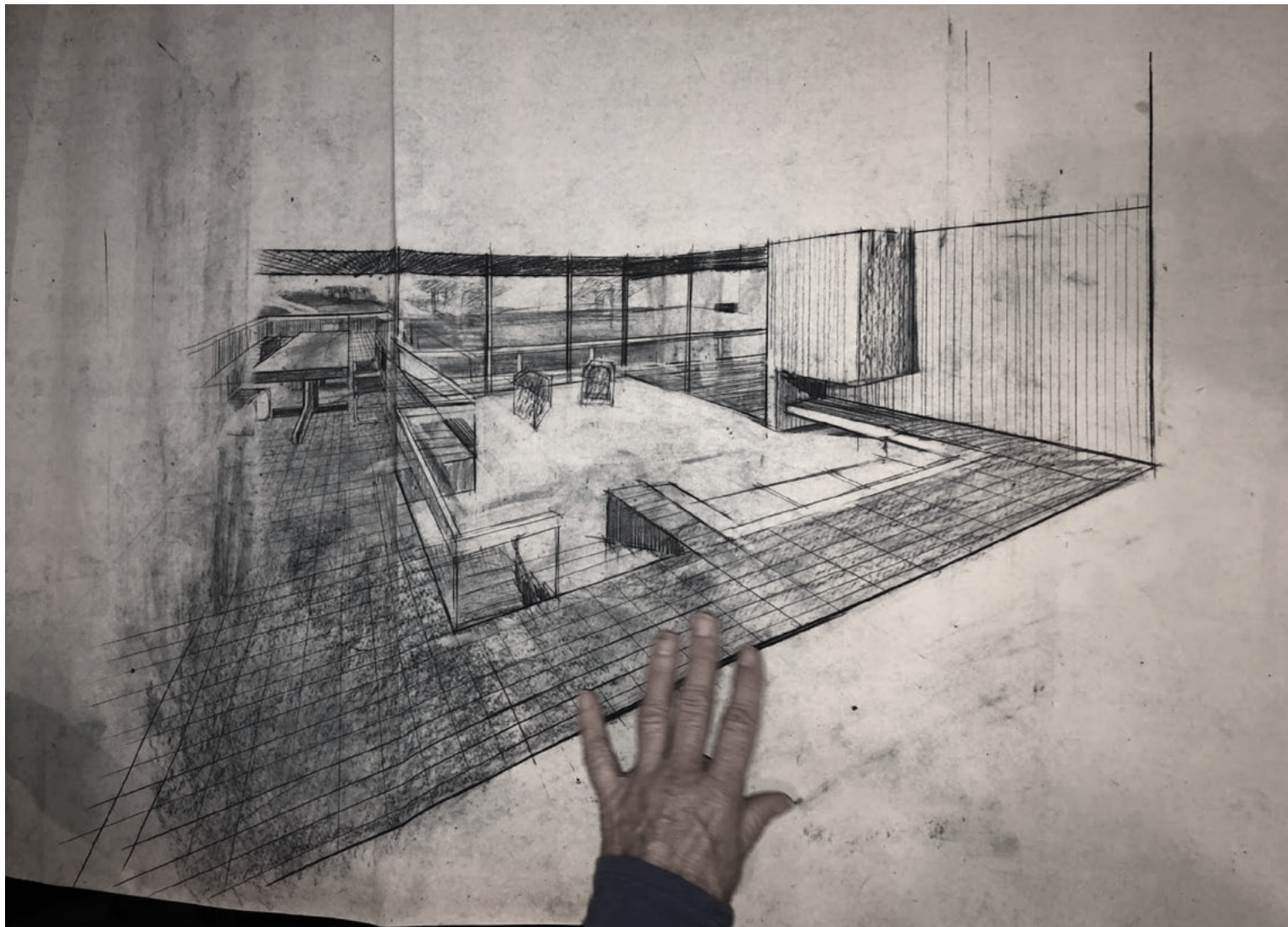
Dining Room



Study



Bedroom & Study Suite



Original Norman Jaffe Drawings



Project Renderings



Arsham House Construction



Arsham House Construction



Library Street Collective

Gallery interior and public art facade intervention within the historic L.B King Building (b.1911).

Studio —
Snarkitecture

Status —
September 2019 - January 2021

Personal Contribution —
Project Lead; Concept design - Completion

Press —
[Design Boom](#)
[The Architects Newspaper](#)
[The Art Newspaper](#)
[Wallpaper](#)

Library Street Collective commissioned Snarkitecture to design its new flagship gallery located in downtown Detroit in The Belt — a once deserted alleyway, which has been transformed into a cultural hub with ongoing public arts programming.

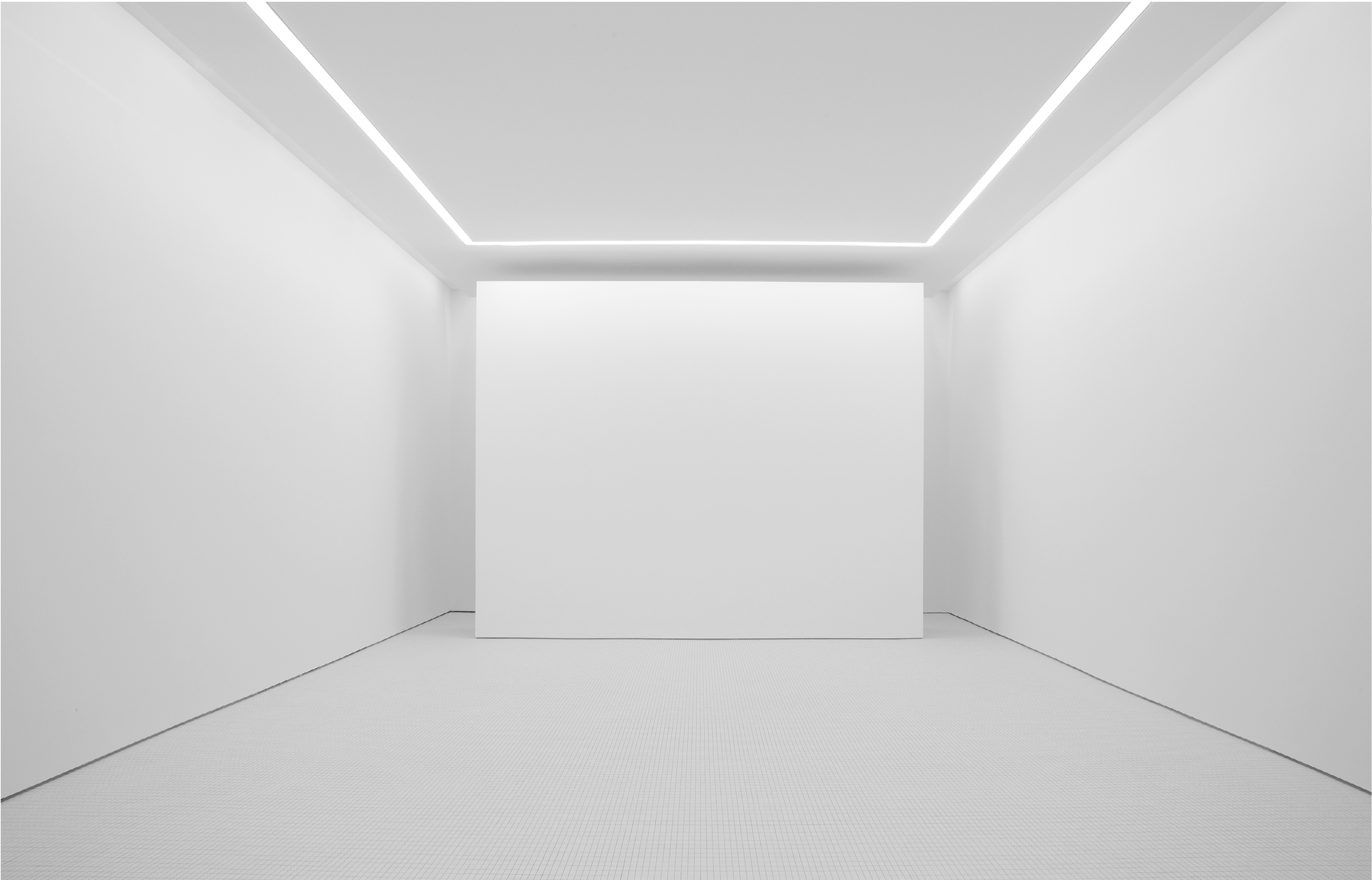
The gallery is located on the ground floor of the historic L.B. King and Company building. Using the original brick exterior, a sculpted a facade opens into the building. This subtle intervention creates both a portal into the gallery, as well as a public art work that contributes to the programming along

The Belt. From inside the gallery, the facade installation creates an arrangement of bricks that appear to cantilever into the space, in addition to allowing natural light to flood the gallery.

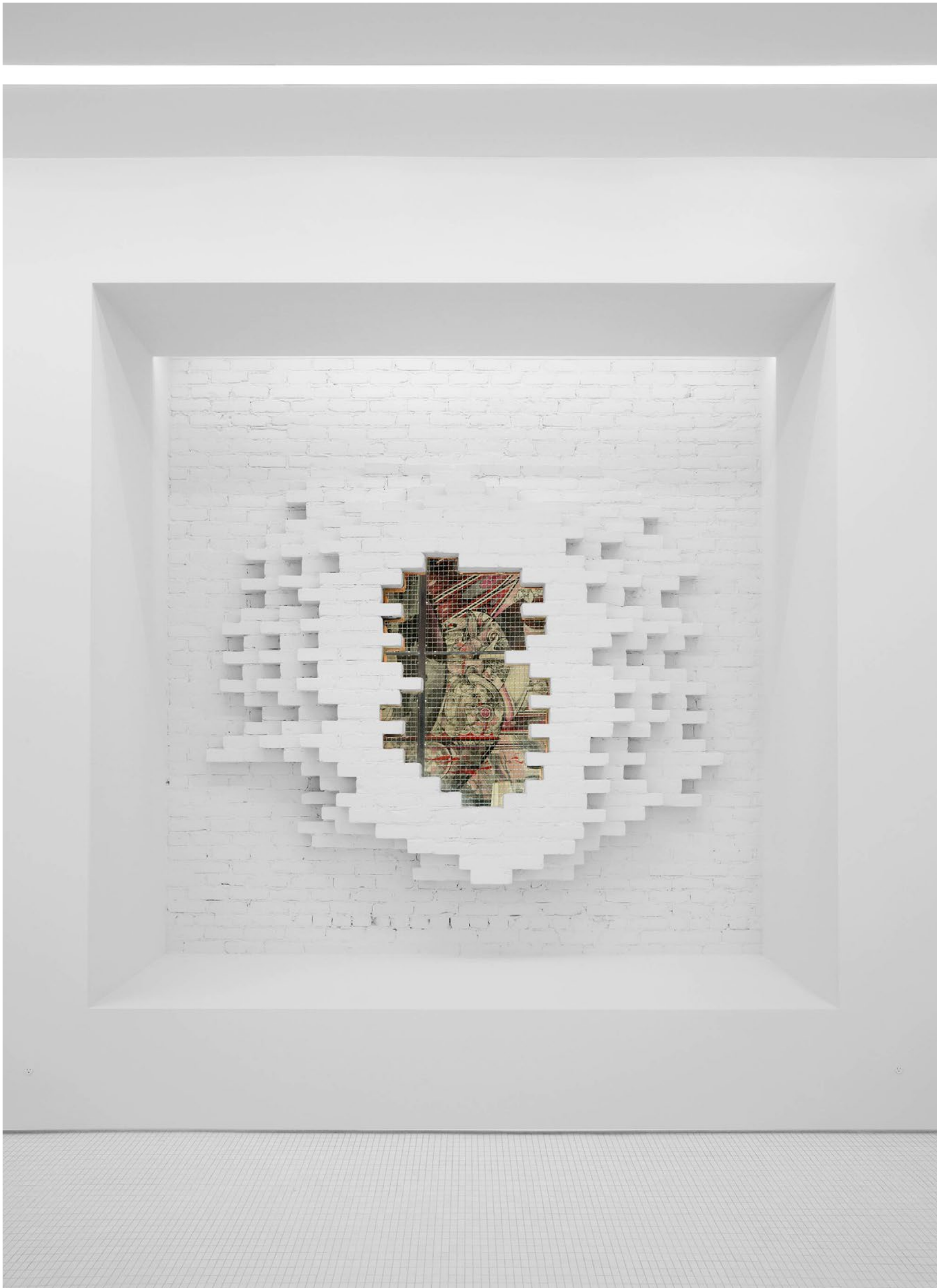
Flexibility was a priority for the client & so the display wall at the rear of the gallery offers exhibition space and a partition for the library, office or a private viewing area. Mosaic tiled flooring and a custom reception desk offer a layer of depth within the monochrome space. Cove lighting around the perimeter, along with a central halo light creates an even diffusion of light for high-performance illumination of works on display.



Library Street Collective Gallery Interior



Library Street Collective Gallery Interior



Library Street Collective Gallery Interior



Library Street Collective Gallery Interior



3110NZ

Contemporary Art Gallery & Omakase v City, Tokyo.

Studio —
Snarkitecture

Status —
Commenced August 2019, Completed August 2020

Personal Contribution —
Project Lead; Concept design - Completion

Press —
[Design Boom](#)

Snarkitecture was invited by LDH Kitchen & Nanzuka Art Gallery to conceive of 3110NZ; by day, 3110NZ operates as an outpost of Nanzuka, one of Tokyo's leading contemporary art galleries run, while by night, the space transforms into a highly regarded omakase restaurant by Takashi Saito of Sushi Saito.

The interior was conceived by inserting a solid volume into the corner location, out of which the exterior openings and interior spaces were scooped and carved out, with respect to the quiet residential surroundings, while invoking curiosity

about the experience within. On the exterior, excavations form the oak pivot door entry and back-lit portholes. Inside the space, the scoops reveal the dining areas & a series of illuminated caverns to display works of art. In addition to the custom oak dining chairs, the dining area is designed around a large slab of Hinoki wood, a sacred species with a soft lemon scent used in sashimi preparation. The flooring throughout 3110NZ was inspired by stepping stone arrangements often found in Japanese rock gardens. Large pebbles formed of terrazzo are surrounded by a concrete infill, encouraging visitors to feel grounded while viewing artworks.











Manifest

Historical adaptive re-use project for Manifest, a new wellness and lifestyle brand in Adams Morgan, DC.

Studio —
Snarkitecture

Project Team —
Elsa Arsenaault, Katie Burzon, Brigitte Lucey

Status —
Commenced September '19, Completed September '21

Personal Contribution —
Project Lead; Concept design - Completion

Press:
[Dezeen](#),
[Wallpaper](#),
[Design Boom](#)
[Surface Magazine](#)

Snarkitecture was tasked with designing four unique but connected spaces within a 4,000 SF historic 19th century row house in the Adams Morgan district of Washington DC.

We were lucky enough to begin our work with BIPOC-owned Manifest at it's very conception, before the building had been purchased and the brand given its name. The architectural process informed every aspect of the lifestyle brand's portfolio; from beauty, hospitality & retail offerings to the complete brand identity. Heritage restrictions provided a raft of challenges but we arrived to an intervention that

maximized every cubic inch of the building. The ground floor was transformed into 'Manifest', a multifaceted wellness environment that includes a courtyard entrance, barbershop, retail boutique, and cafe. Meanwhile, the second floor houses Out of Office, an intimate speakeasy offering a unique lounge experience to Manifest members and friends. The third storey provides office and BOH spaces, with the fourth floor becoming a luxury apartment with rooftop access and views of the Washington Monument. In the front yard, curvilinear seating and planters form a courtyard area that visually connects the building to the street and provides an outdoor community space for visitors.



North Facade Before



North Facade After





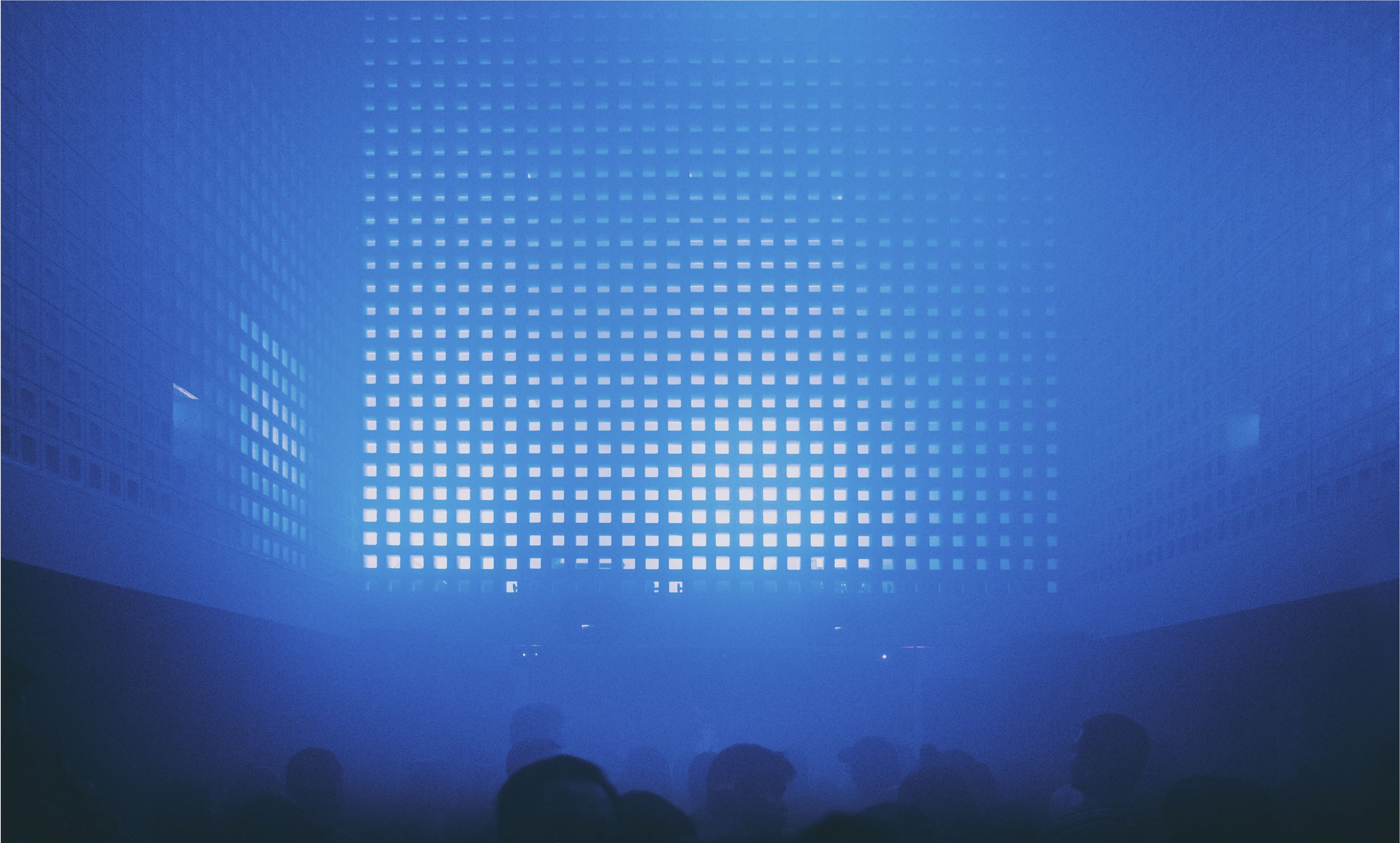
Manifest Cafe



Speakeasy Secret Entrance



Speakeasy Bar & Lounge



Beam

Facade & Interior Renovation of an existing Nightclub.
Thonglor, Bangkok.

Studio —
Snarkitecture

Status —
Commenced January 2018, Completed September 2018

Personal Contribution —
Project Lead; Concept Design - Completion

Press—
[Bangkok Post](#)

Snarkitecture was approached to re-imagine the popular 3- story nightclub consisting of a ground floor disco/funk space, and Beam: an honest club featuring techno and hip-hop residents.

The existing clubs were missing communal areas and seating spaces and the dance floor, whilst having a top of the line A/V system, lacked personality & ambiance. Our process was focused, paired with an aggressive 4-week construction schedule. A critical decision was to separate the bar from the dancefloor to introduce intimate and communal zones.

We veiled the bar in a mesh cloak that covered all 4 walls and the ceiling and introduced custom bar seating, leaners, couches and cocktail tables + stools to create an electric space to start the night.

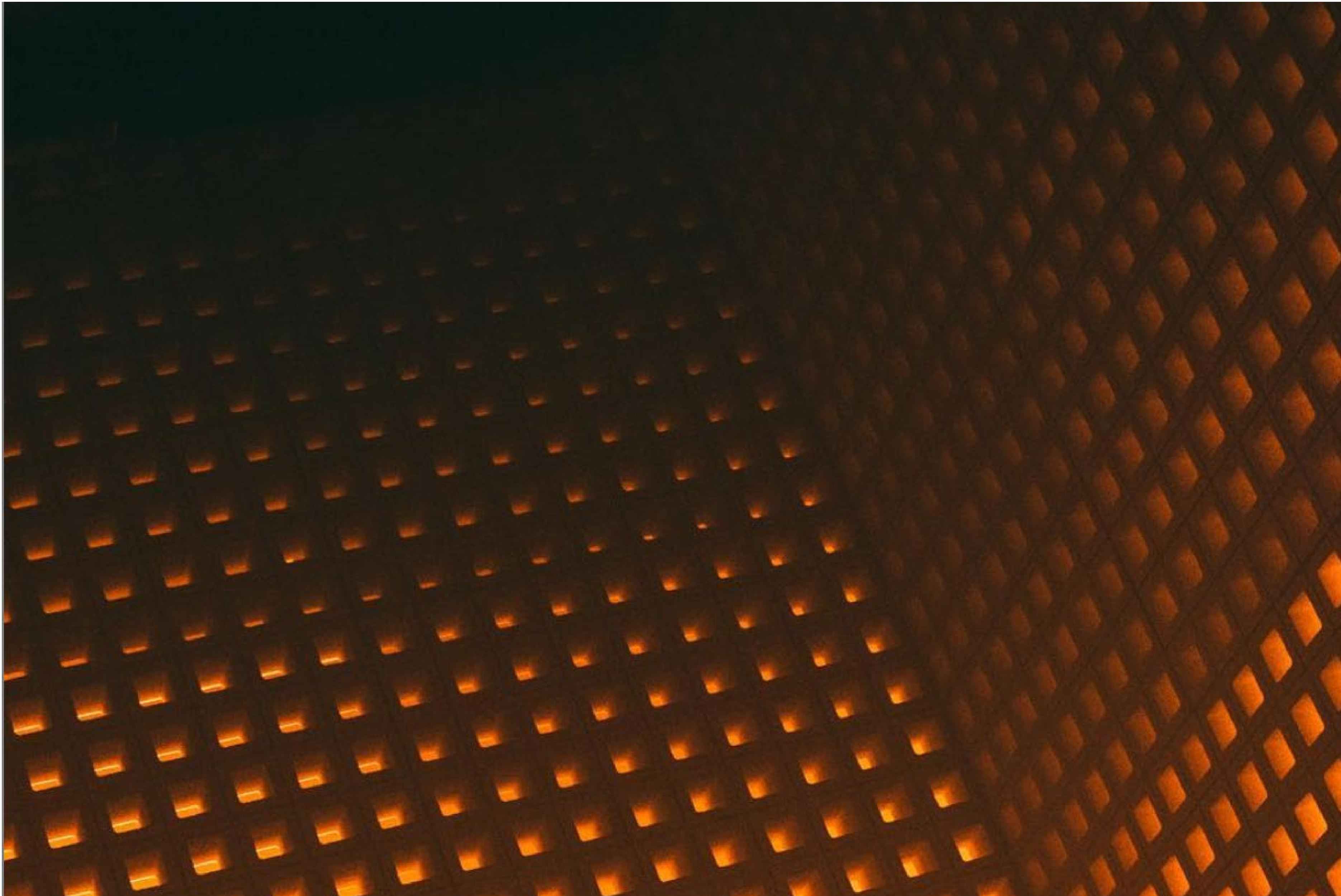
On the dance floor we amplified the volume of the space to create contrast to the compressed bar area. On 3-sides, custom breeze-block wall panels extended to the top of the 20ft ceiling and sat in front of the existing walls and A/V system. This provided a cavity to harness the light and create the illusion of infinite space and a canvas for visual artists to affect.



Beam Nightclub



Beam Nightclub





Temporary Environments



Altered States, Salone

Public Art Installation commissioned by Caesarstone Global.
Salone Del Mobile, Milan.

Studio —
Snarkitecture

Status
Completed 2018

Personal contribution —
Project Lead

Press —
[Wallpaper*](#)
[Dezeen](#)

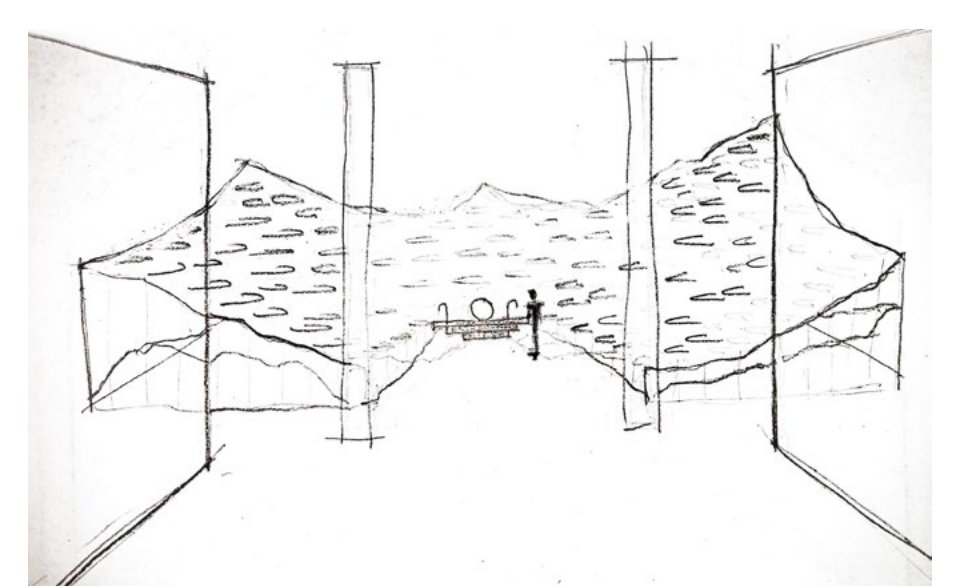
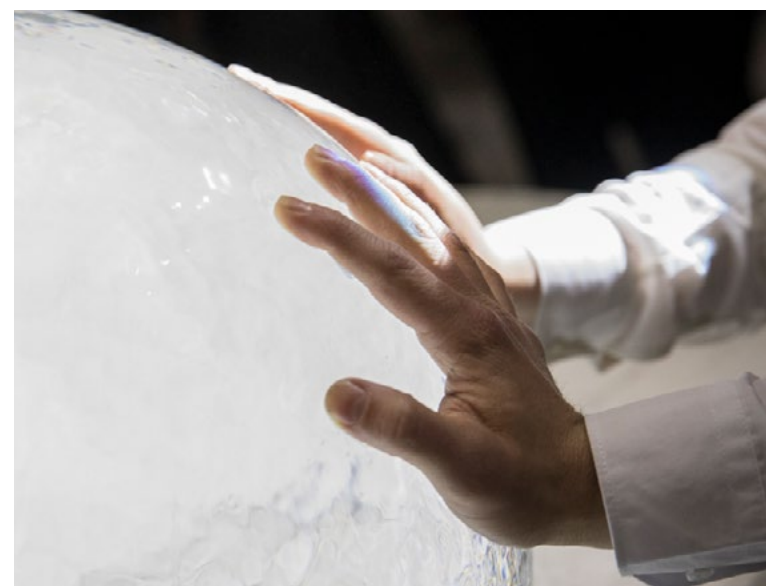
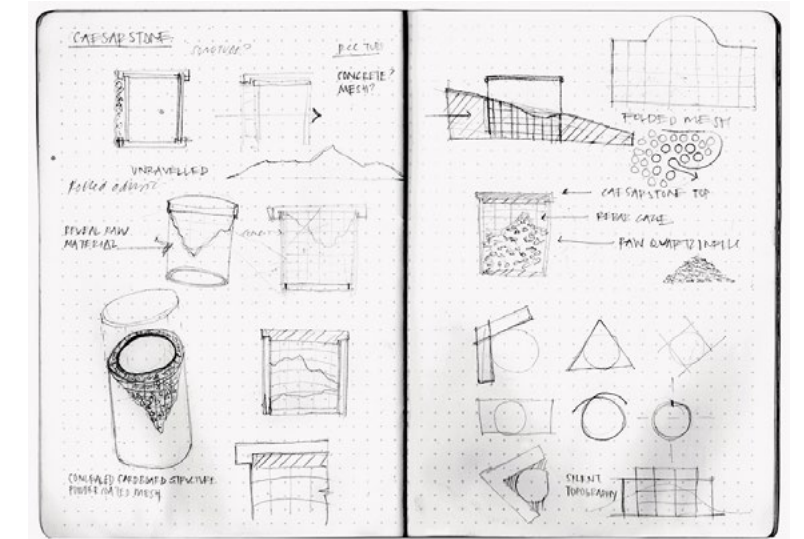
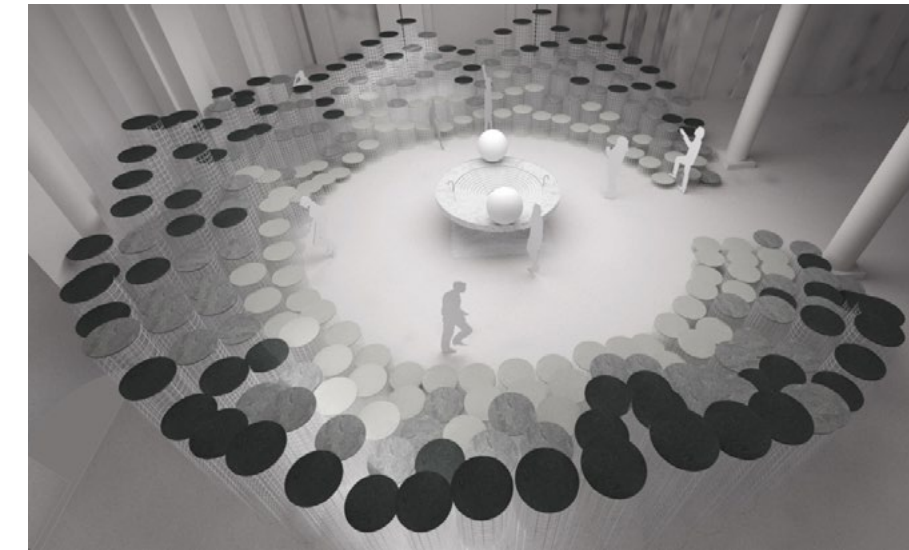
Commissioned by Caesarstone for Salone del Mobile 2018 in Milan, Altered states Milan is part two in an exploration of the changing states of water as it relates to our everyday rituals of the kitchen.

The project was installed inside the historic Palazzo dell'Ufficio Elettorale for the duration of Milan Design week. Visitors were invited to reconsider the elements of ice, water and steam and their role in everyday domestic rituals such as cooking, gathering, entertaining and working.

A landscape of cylindrical pedestals constructed of architectural mesh and a gradient of Caesarstone quartz create an amphitheater that welcomes visitors in to be both spectators and players within the installation.

Situated at the centre of the room was an island composed of stacked layers of quartz that provided a landscape for ice, water and steam to be experienced in unison. Two large spheres of ice slowly melt simultaneously as fountains of water cascade down to a hot plate at the island's centre, resulting in a cloud of steam that rises above.







Sway

An interactive public art installation commissioned by Intersect, by Lexus. New York, New York.

Studio —
Snarkitecture

Status —
Commenced September 2017, Completed April 2019

Personal contribution—
Project Lead, Concept design - Completion

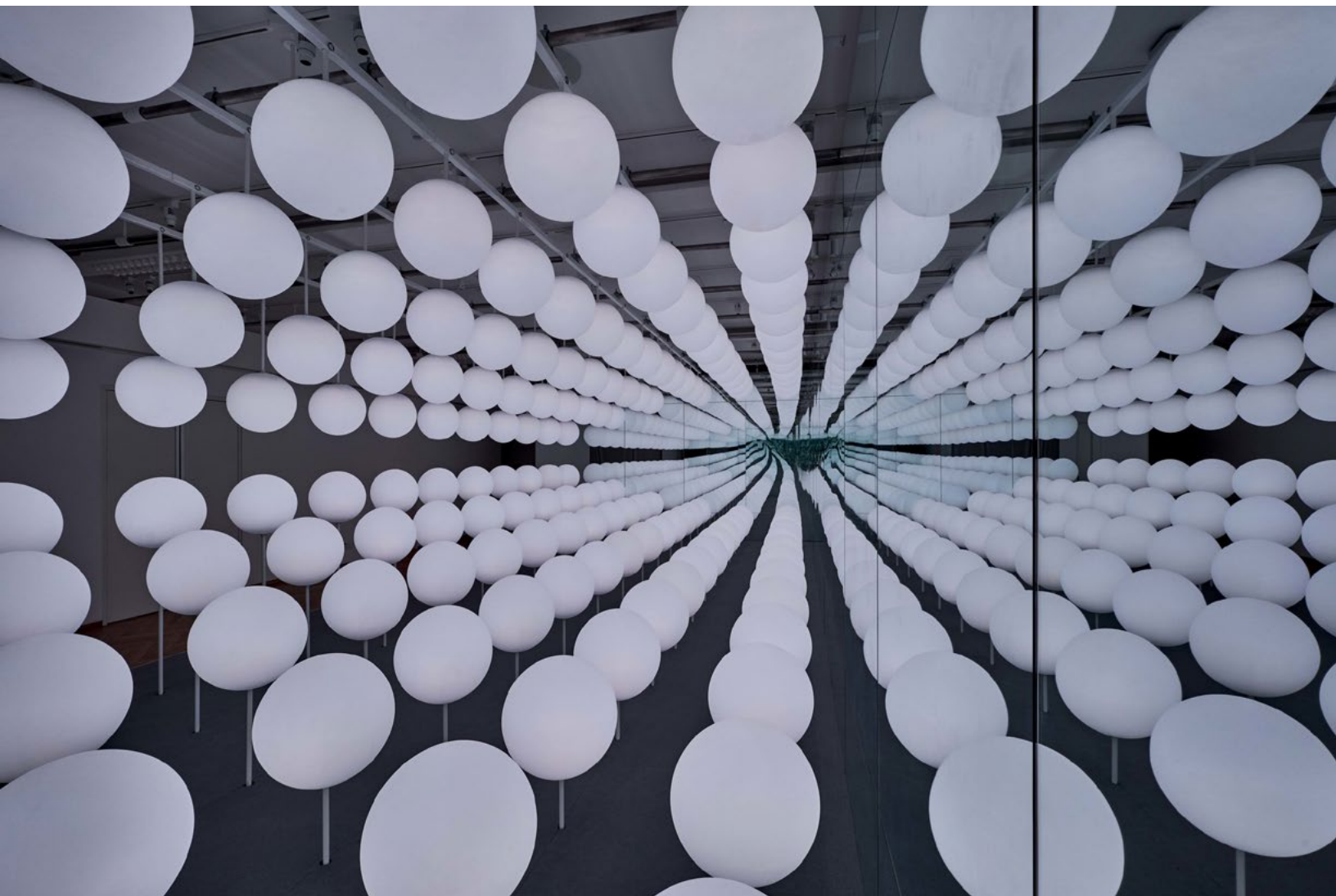
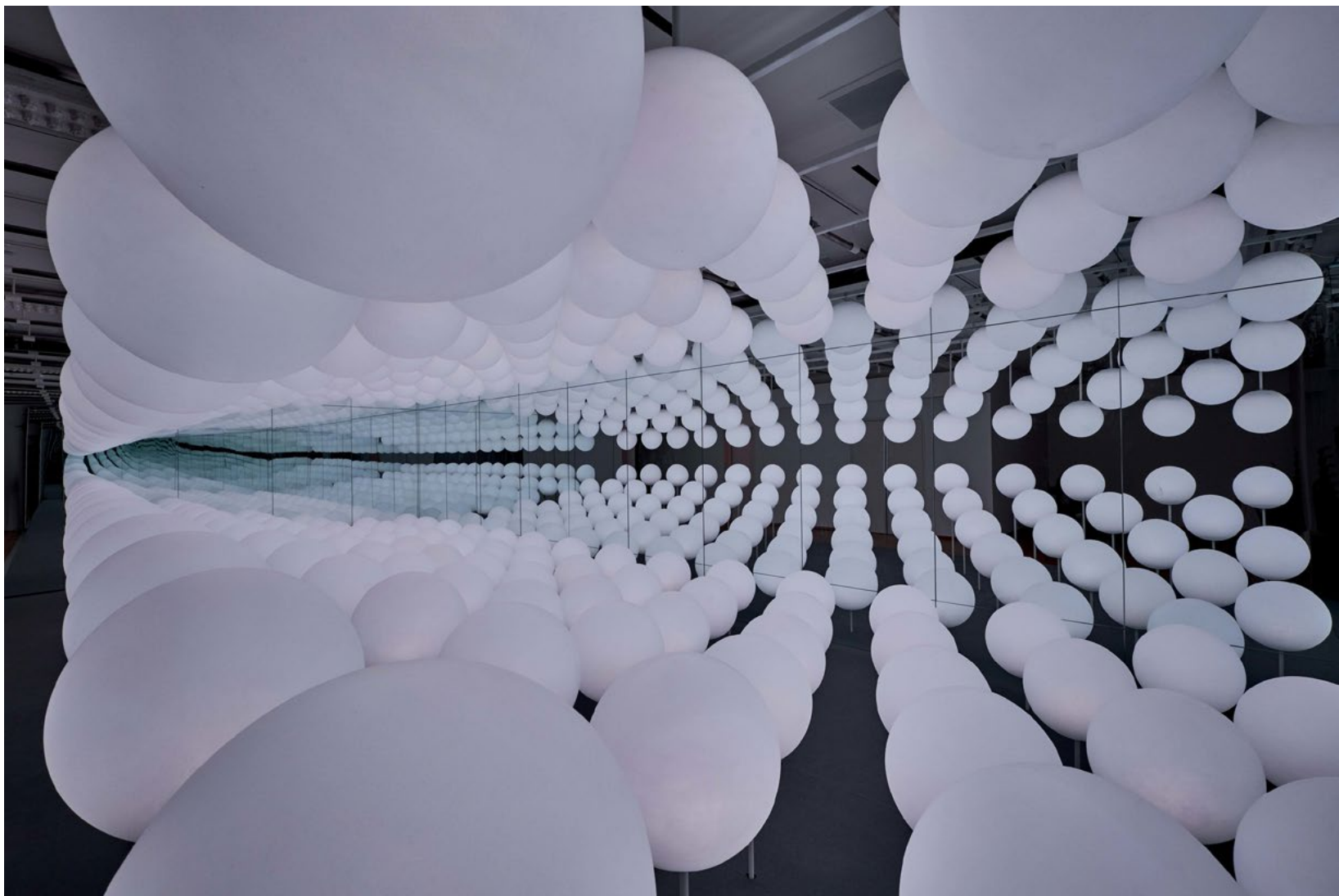
Press—
[Design Boom](#)

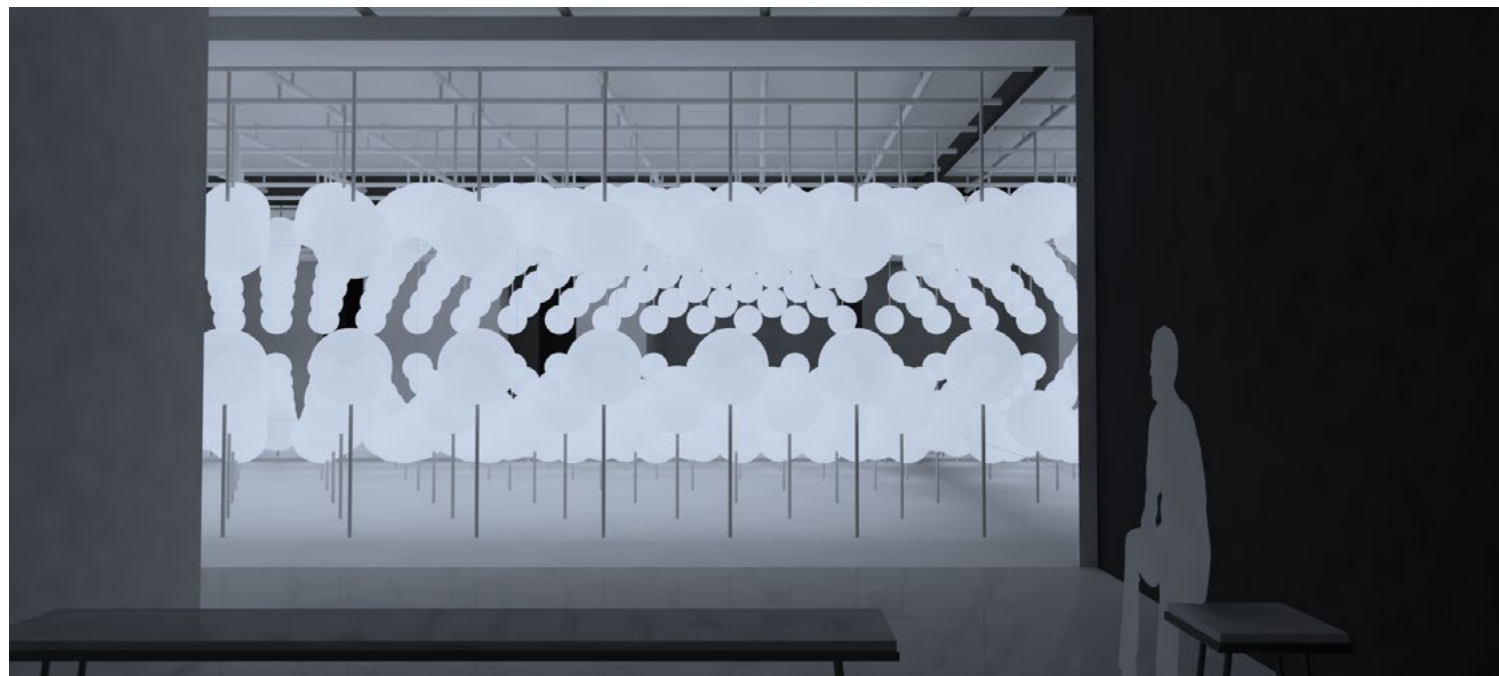
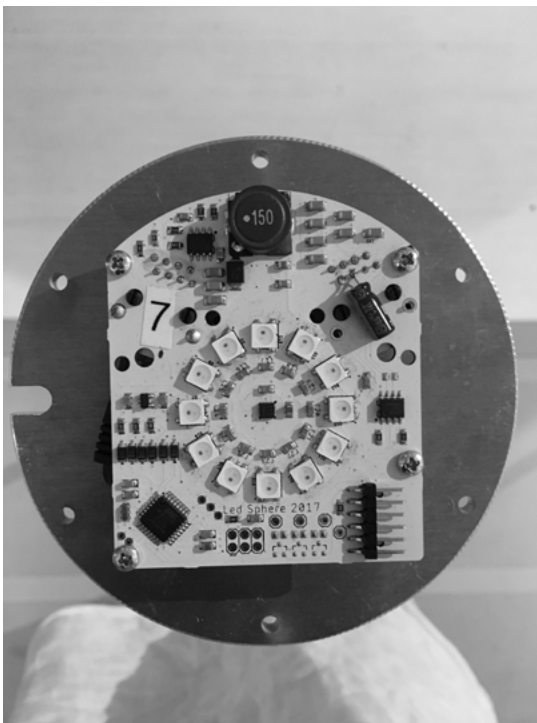
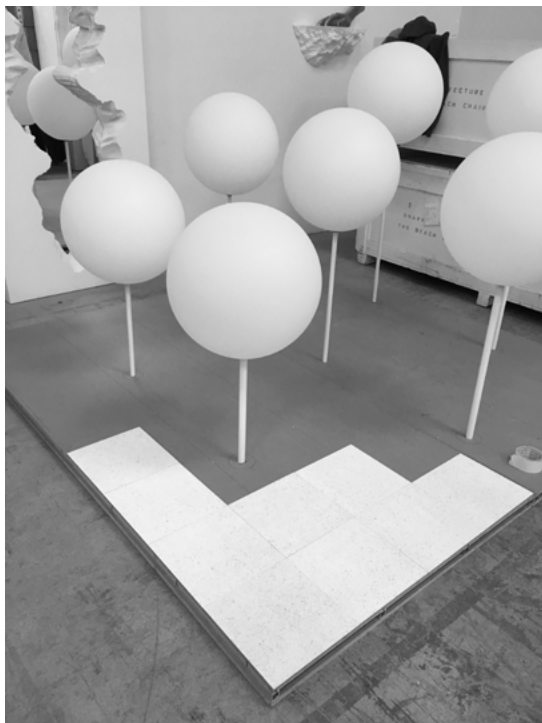
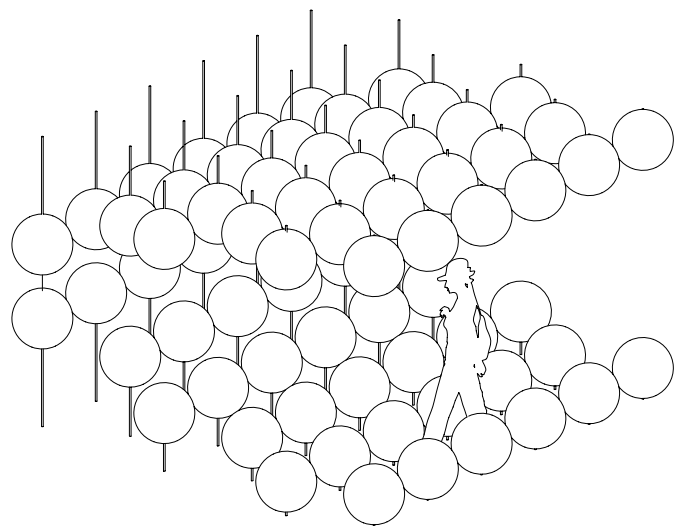
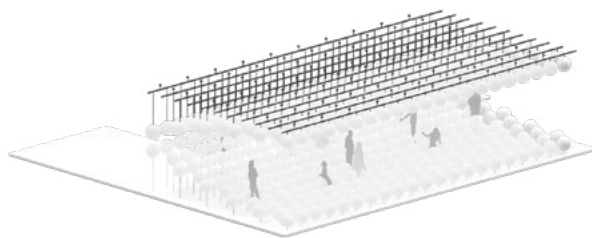
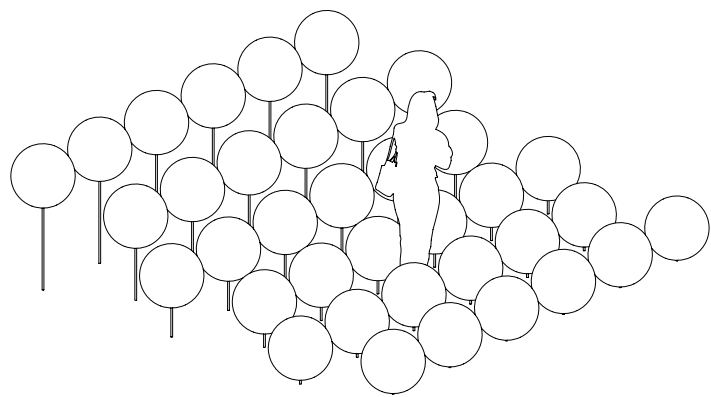
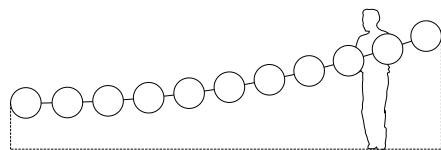
Commissioned for the gallery at Intersect by Lexus, Sway is a participatory installation made from 150 white spheres mounted to gently swaying poles that are arranged in two precise fields. Surrounded by mirrors, the ground and ceiling planes are reflected to form an infinite parabolic enclosure. I

In direct response to human movement and touch, each gently lit sphere reveals a change in hue and intensity. Visitors are

invited to immerse themselves in a setting that can be altered through tactile interaction. Movement through the field creates the effect of rippling light, as if one is wading through still water or tall grass.

Sway is a transcendent program for reflection, as well as an opportunity to explore our connection to our physical surroundings.





Production Process

Project Renderings



Altered States

Public Art Installation commissioned by Caesarstone for the Interior design Show, Toronto.

Studio —
Snarkitecture

Status —
Commenced September 2017, Completed January 2018

Personal Contribution —
Project Lead; Concept Design - Completion

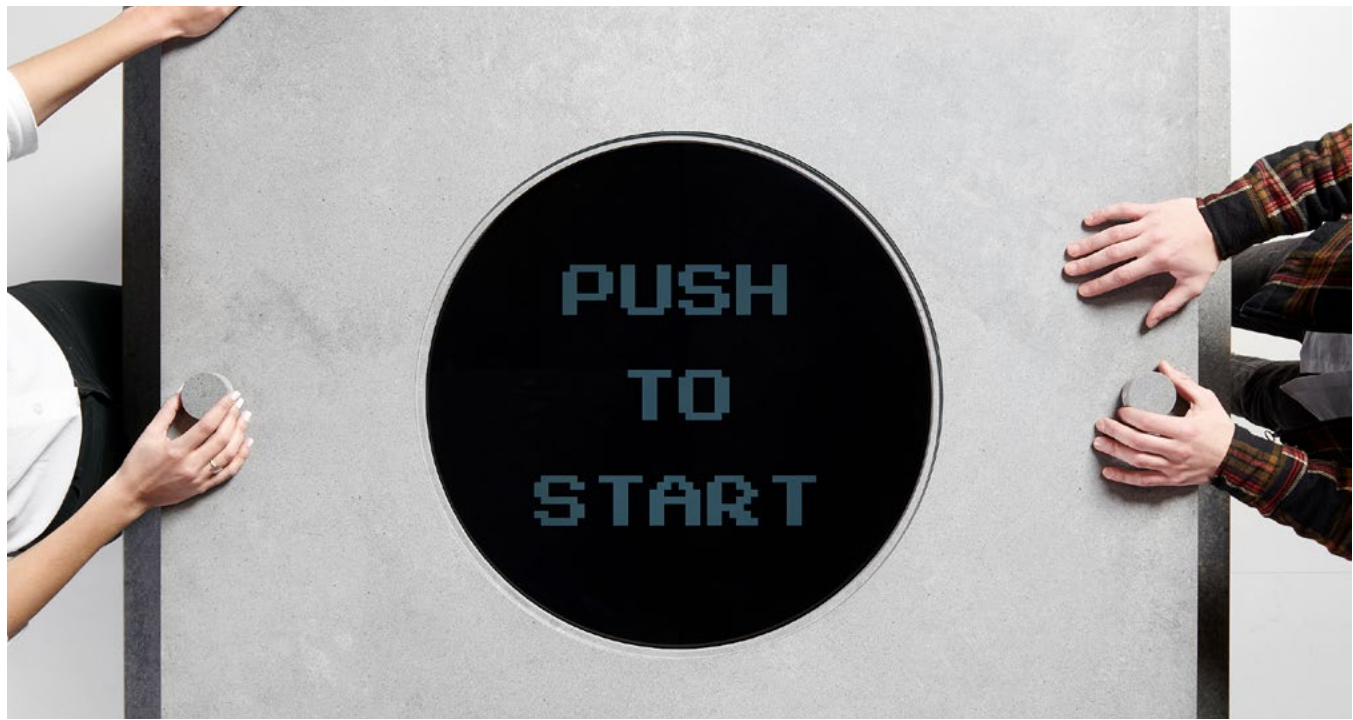
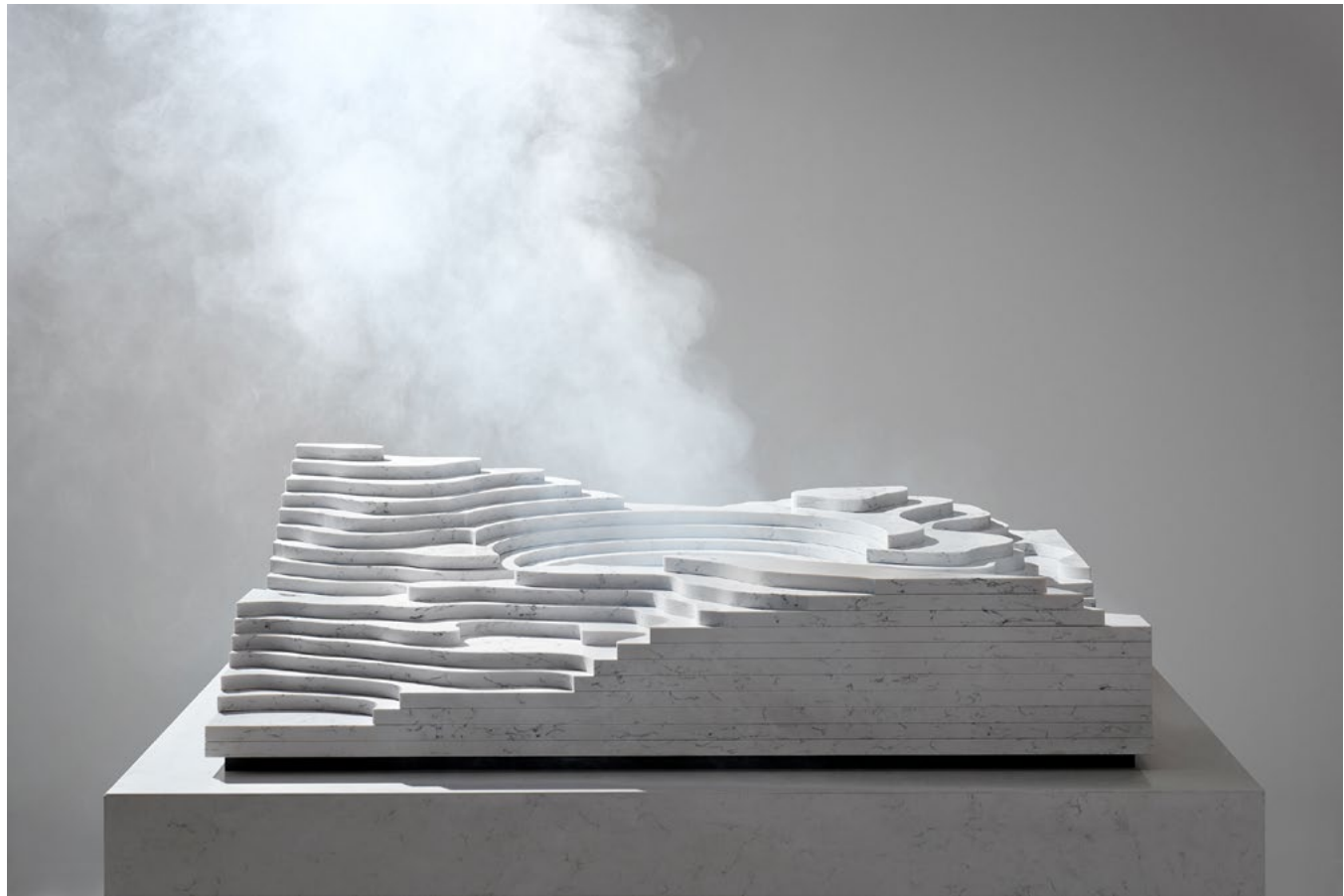
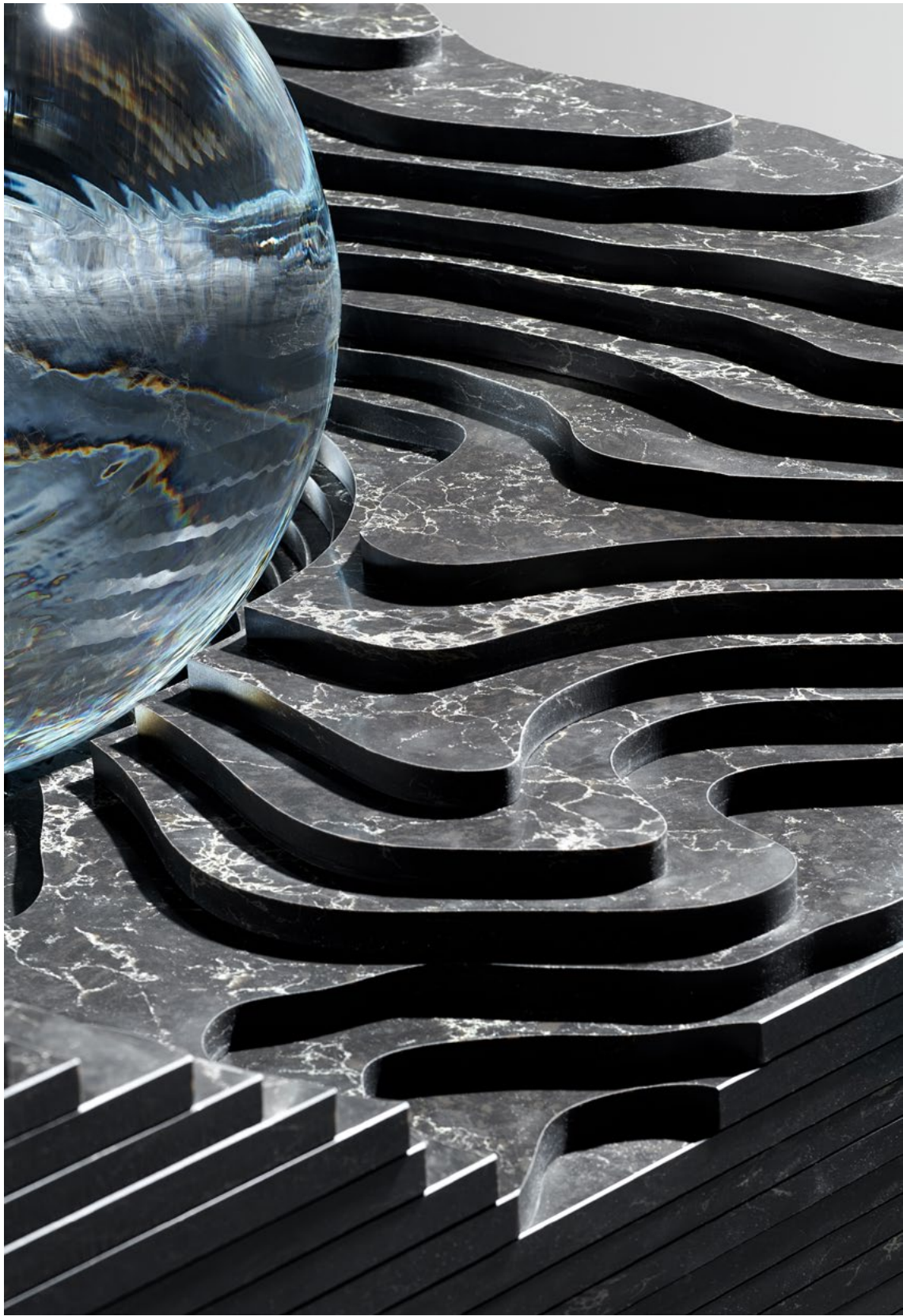
Press —
[Dezeen](#)
[Wallpaper*](#)
[The Toronto Star](#)

Altered State for IDS Toronto was part one of Caesarstone's designer collaboration with Snarkitecture. The brief for this year was to re-imagine the role of the kitchen island, an icon of the modern home, through the application of the Caesarstone quartz material.

Our exploration was centered on changing states of water and its presence within our everyday ritual—both within our domestic and natural environments. We approached the kitchen island with an understanding that it's a place for social interactivity that supports a vast array of programmatic

functions. Instead of forming one island we looked to distill the key functions of the island into four moments; a place for drinking, a space for cooking, a space for eating and a space for digital connection.

Each island was presented as a landscape caught in a constant state of flux whereby visitors were invited to touch and explore the kitchen island in a new and unexpected way.



Altered States Installation

Project Renderings



Metalwork



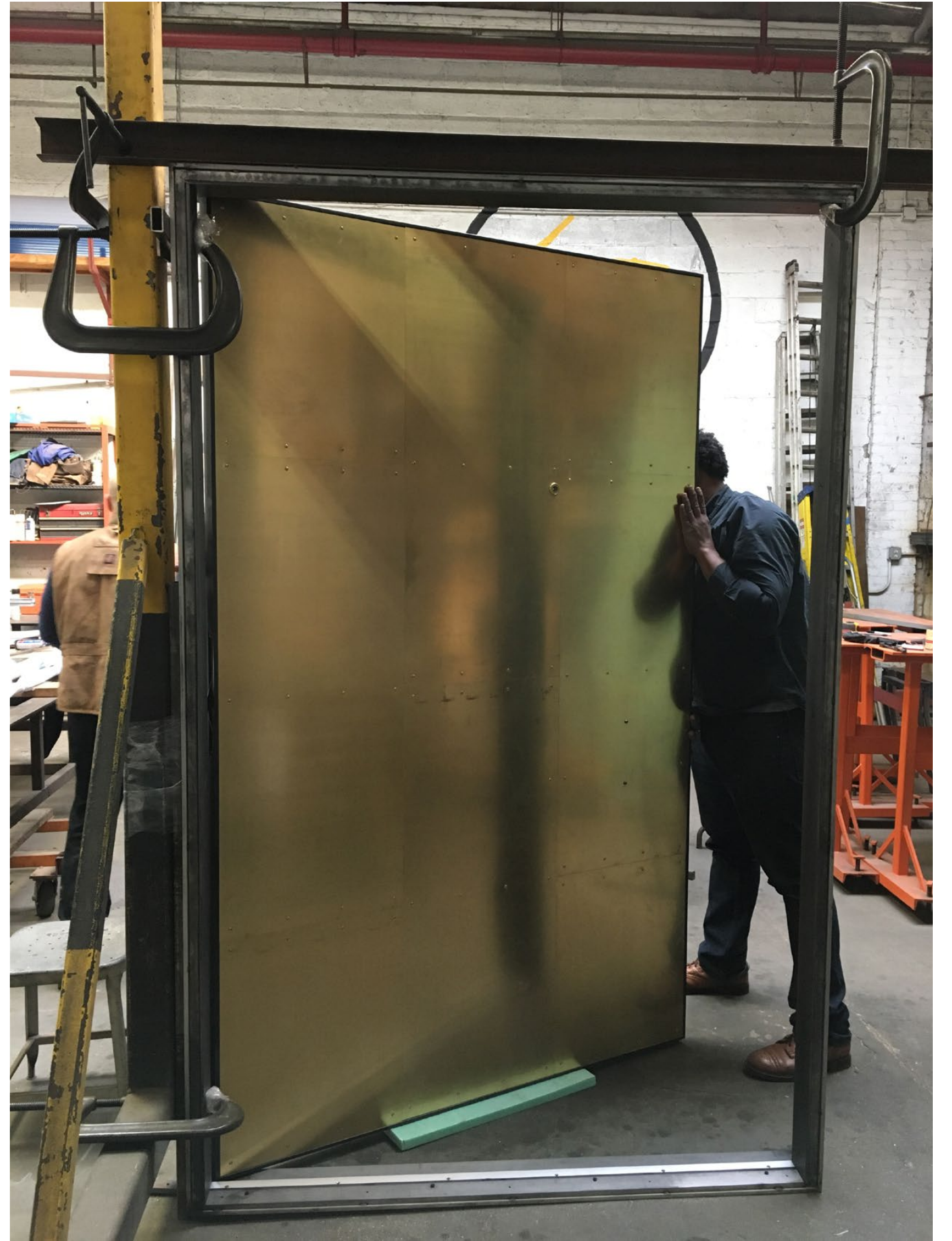
Various Metalwork

A selection of architectural metalwork commissions designed and built in-house. Brooklyn, New York

Studio —
Face Design & Fabrication

Personal Contribution —
Senior Designer & Assistant Fabricator

Project Team —
Todd Fouser, Reuben Jorsling, Jo Godsey



Bronze Door with original Alvar Alto Pull attachment



Designed & Built cold rolled steel bookshelf



Cloudy Black Oxide hand finish



Aluminum facade prototype for Toshiko Mori



Blackened bronze medicine cabinets for DHD

