

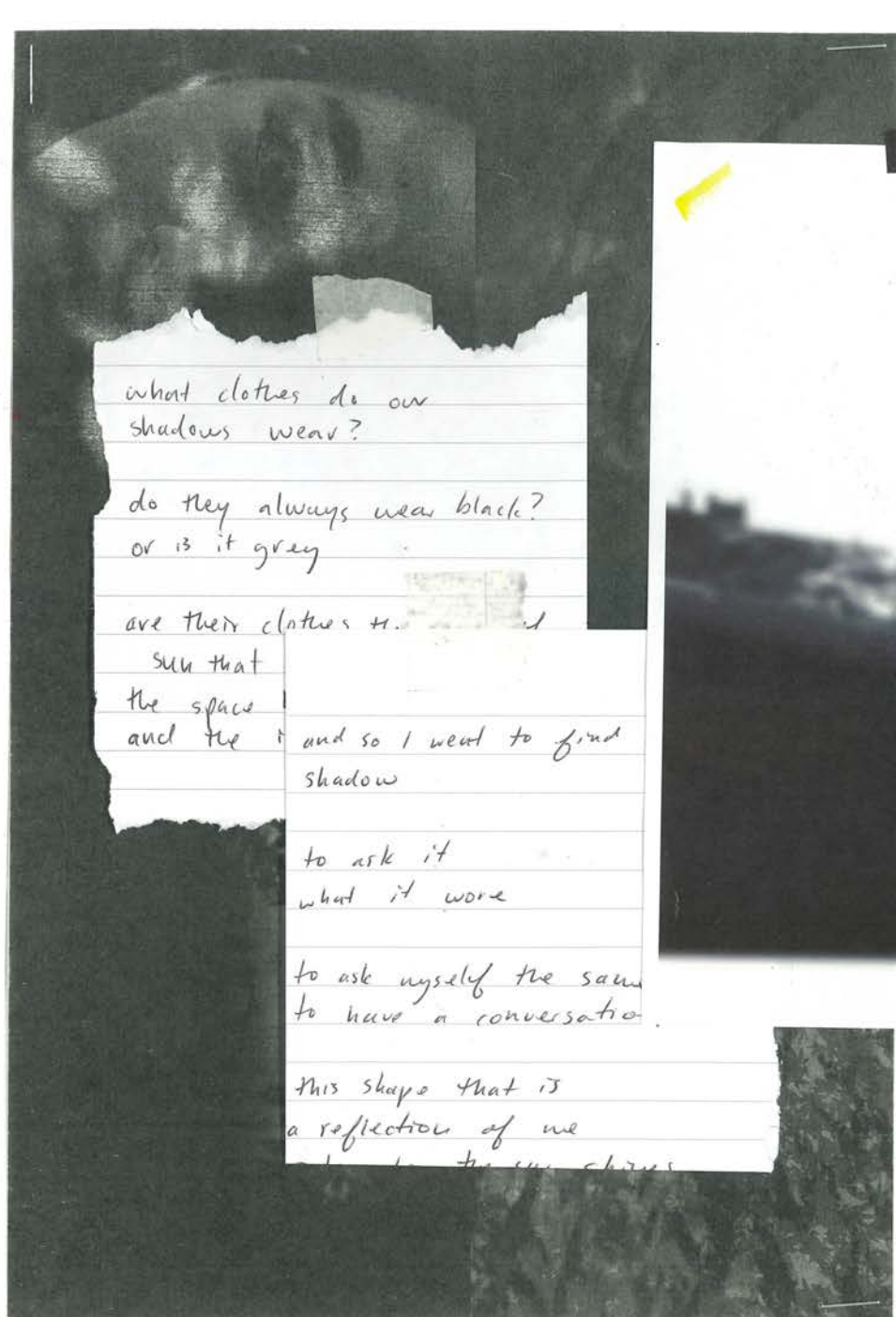


J O S H J E N S E N

jensen.o.josh@gmail.com

ig: @jjoshjjensen

jjoshjjensen.cargo.site



what clothes do our
shadows wear?

do they always wear black?
or is it grey

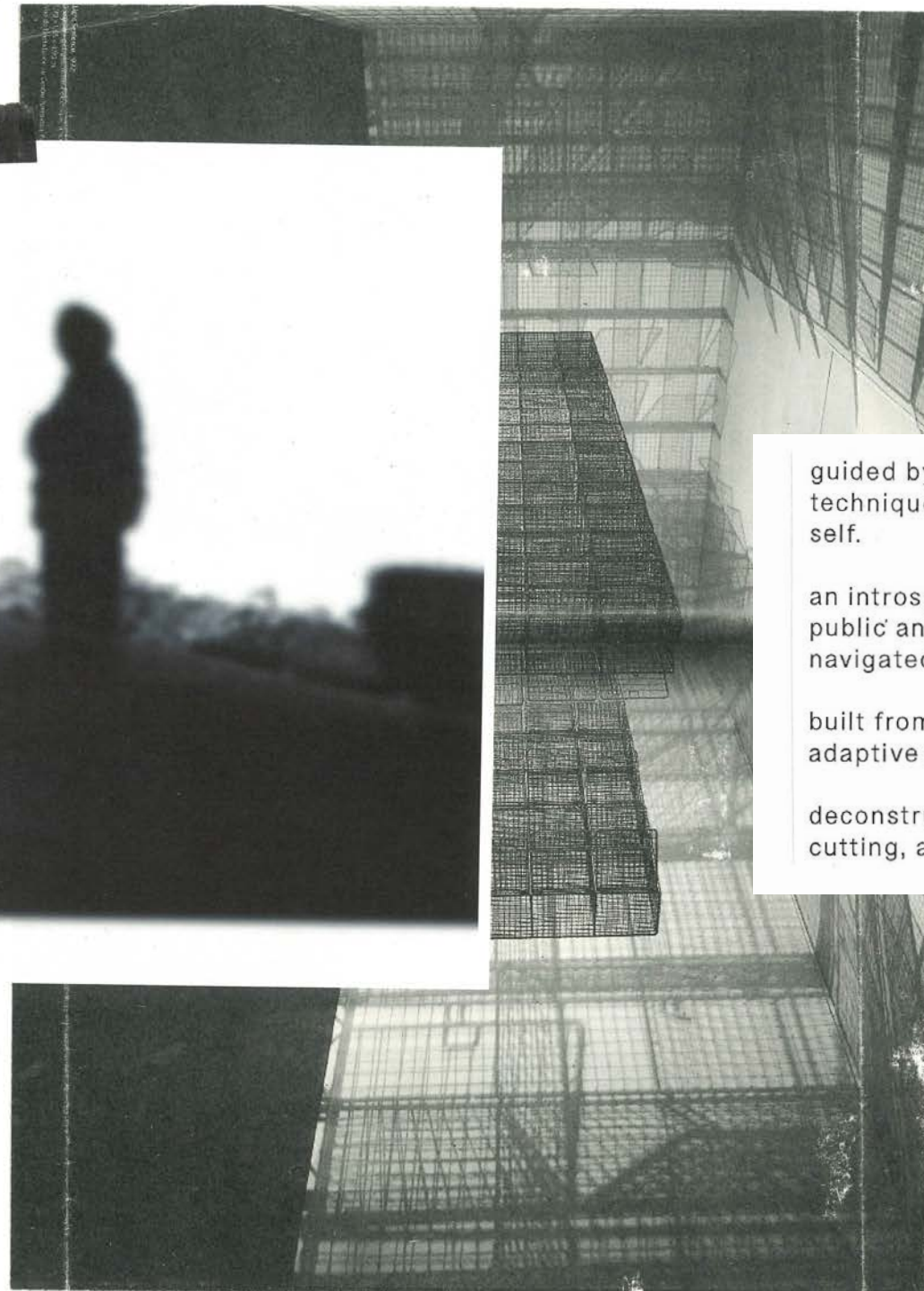
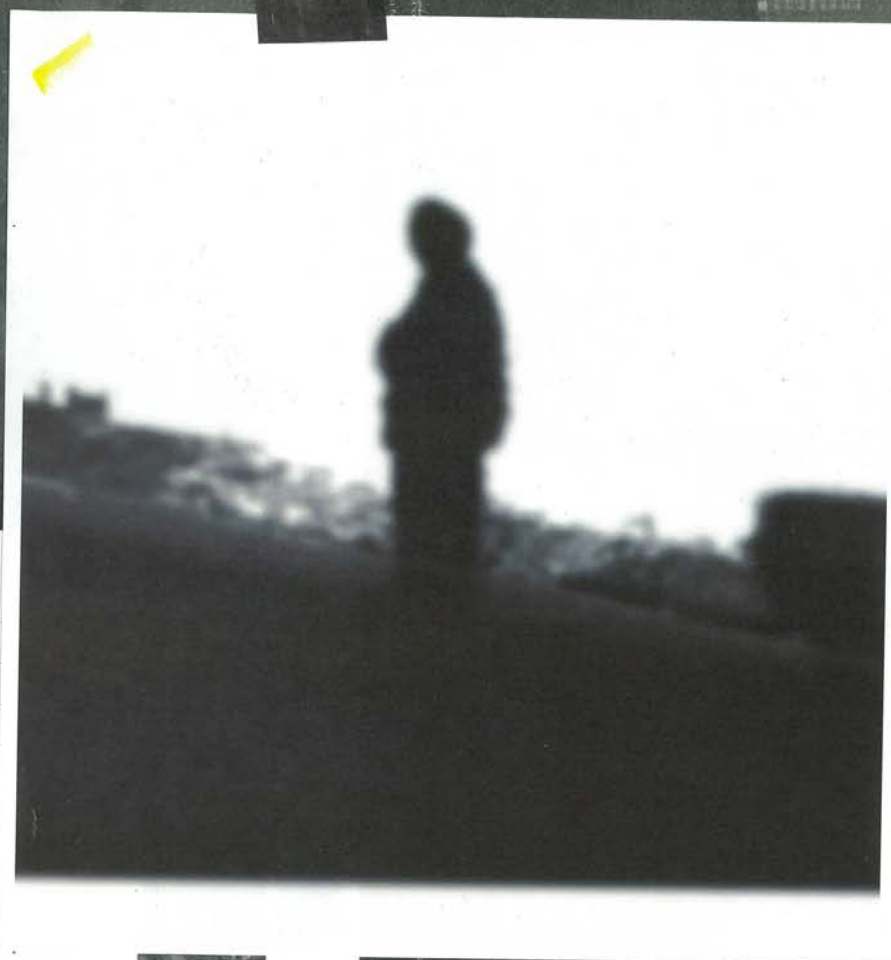
are their clothes the
same that

the space
and the and so I went to find
shadow

to ask it
what it wore

to ask myself the same
to have a conversation.

this shape that is
a reflection of me



presence, absence

guided by the work of Mona Hatoum, Vivian Maier, Wim Wenders' Perfect Days, and the techniques of camera-less photography, I explored my own relationship with my shadow self.

an introspective process led by my thoughts, memories, and tension between my public and private self. by embracing the ambiguity and quiet intensity of the unseen, I navigated a path to dress the body and the space it leaves behind.

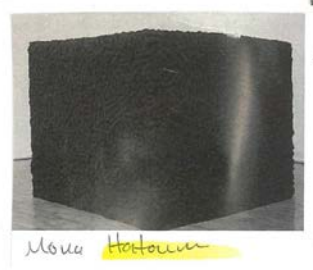
built from repurposed garments using a zero-waste approach and designed to be size adaptive and gender inclusive, this project fits within a regenerative fashion ecosystem.

deconstructed and reconstructed garments reveal their shadow spaces. gathering, tying, cutting, and sublimation printing distort and layer: shaping absence into presence.



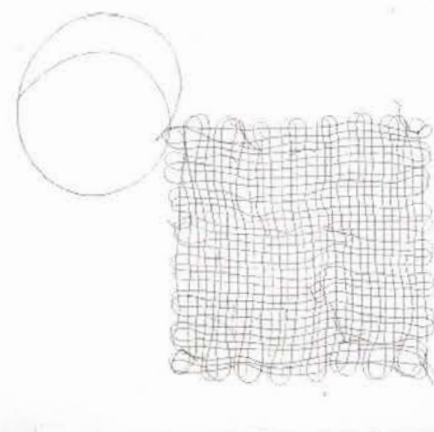
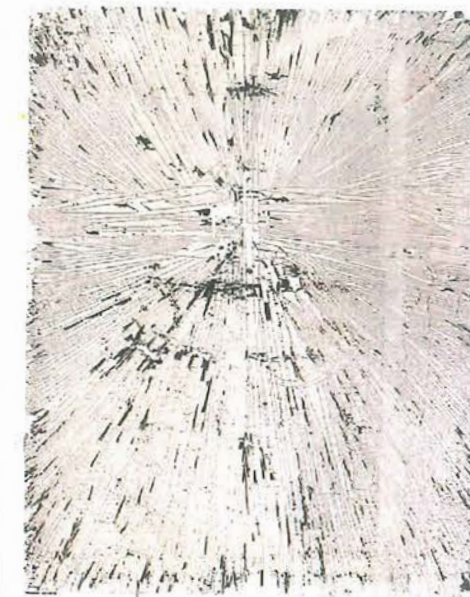
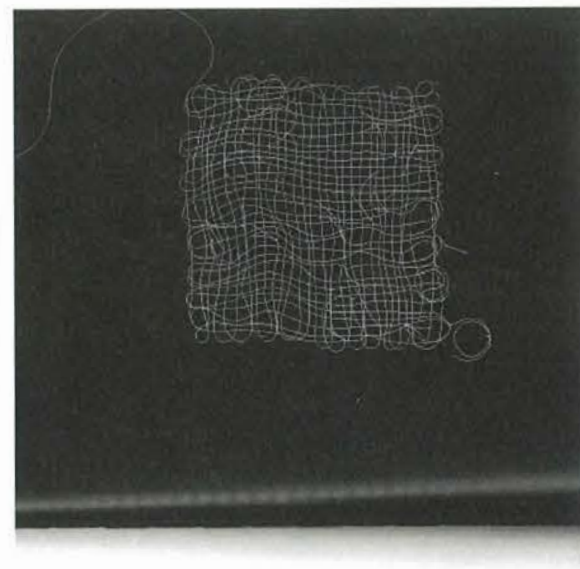
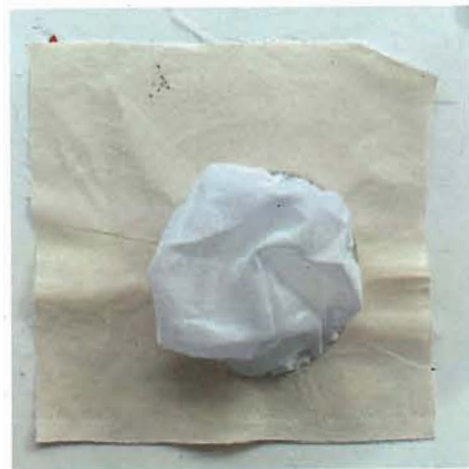


l'ore nensu

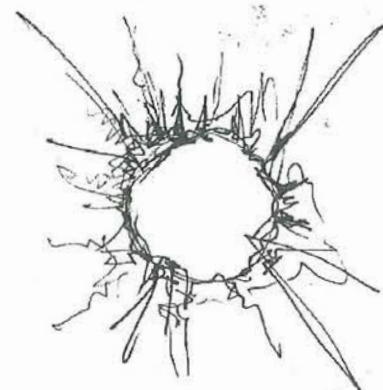


l'ore nensu





DESIGN ELEMENTS



circles



volumes



gathering, tying, cutting, reconstruction,
and sublimation printing, distort and layer

variations of the same techniques are applied in different combinations

1



2



3



4



5

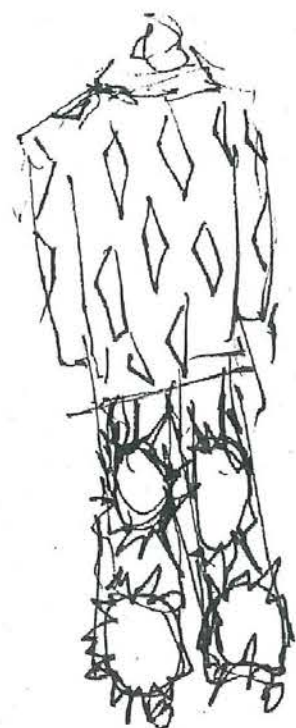


6

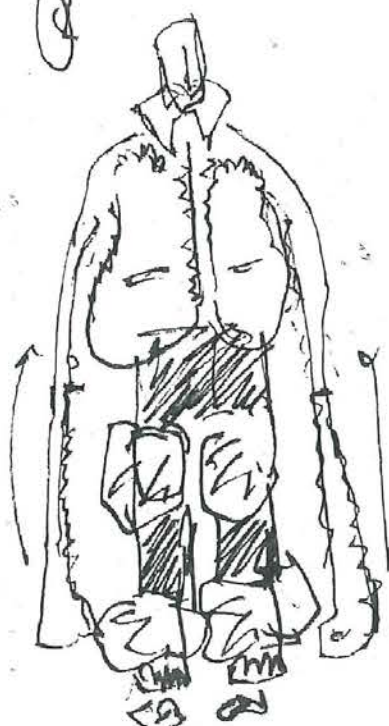


one
back
to...

7



8



9

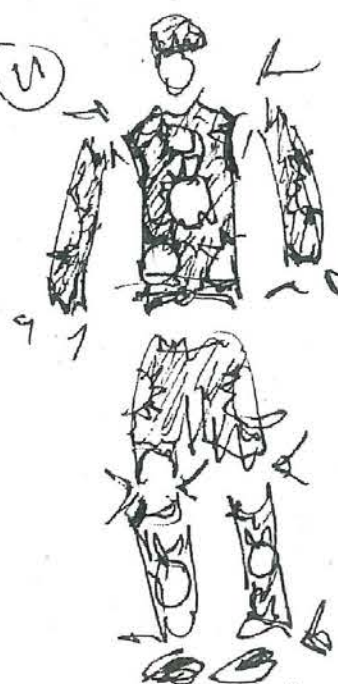


10



refer

11



12



will help you to put

13

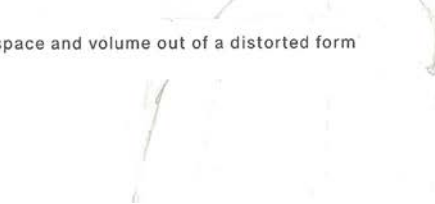
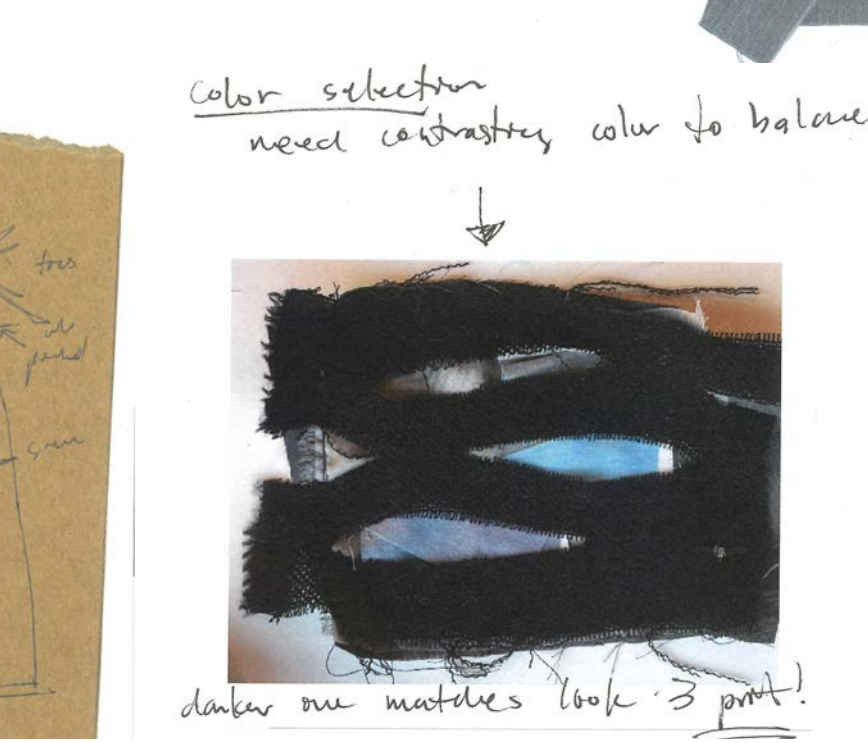
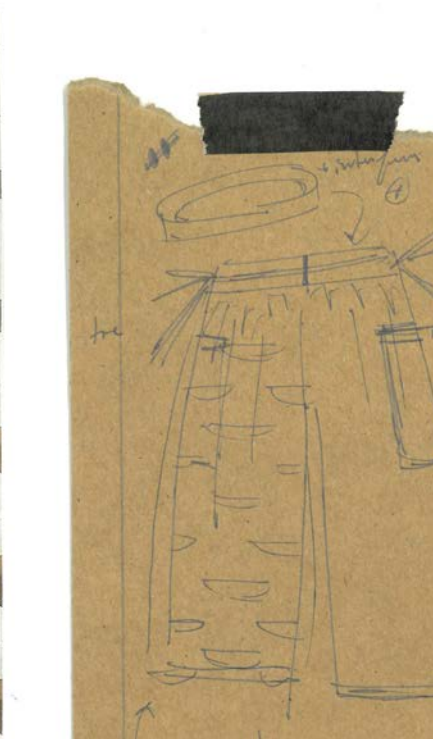
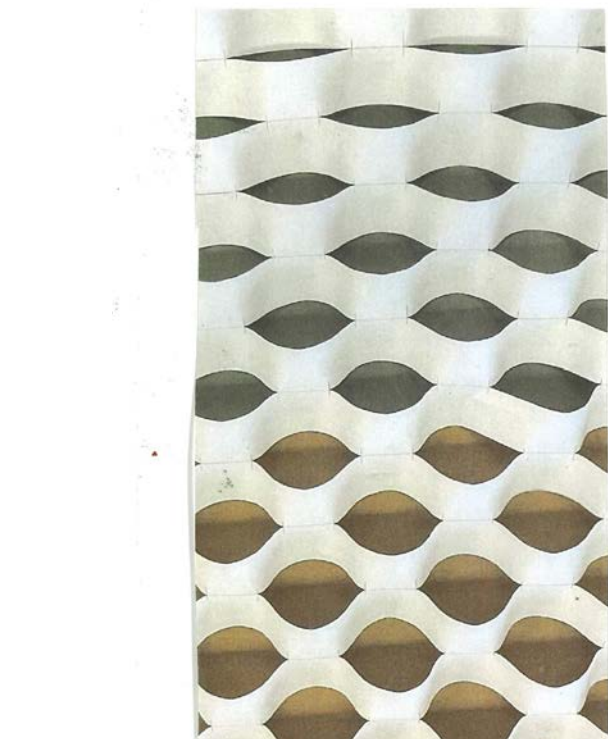
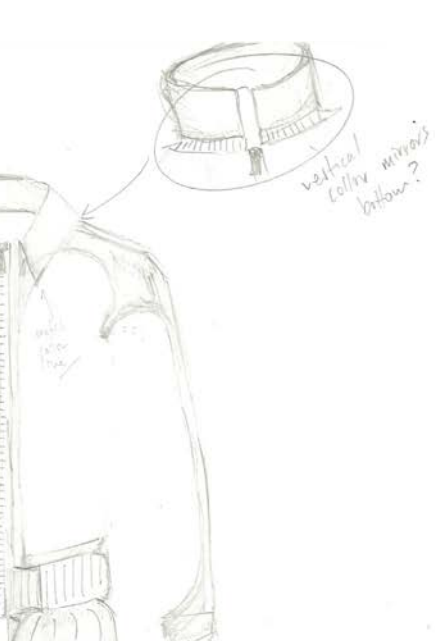
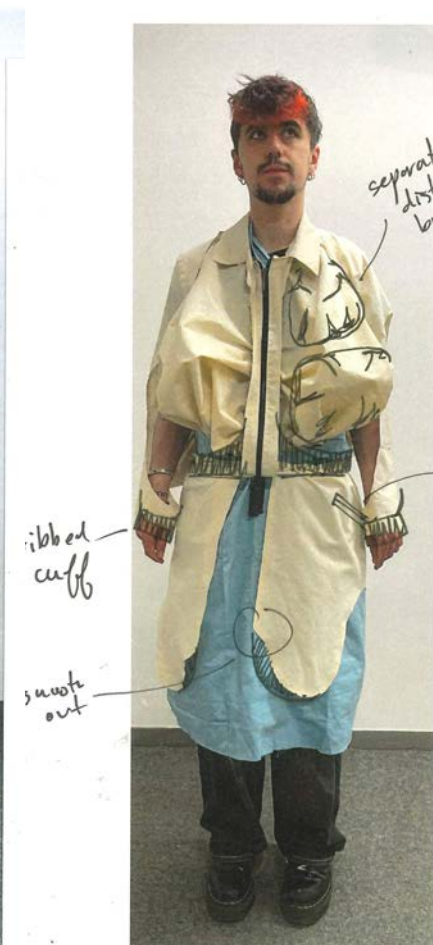


14



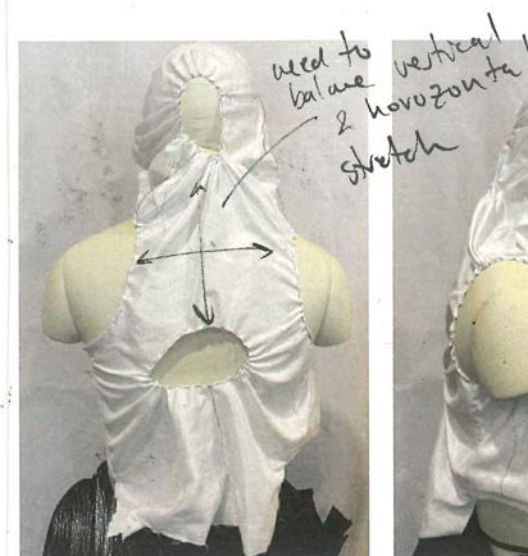
15







12 repurposed dress shirts slashed vertically and tied in bows



add matching front

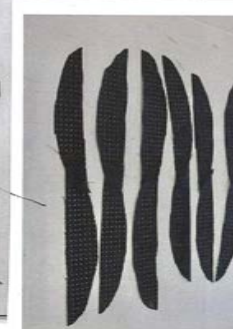


lasts w/ partially cut shirts & fully cut

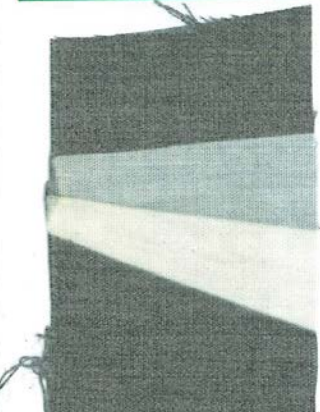
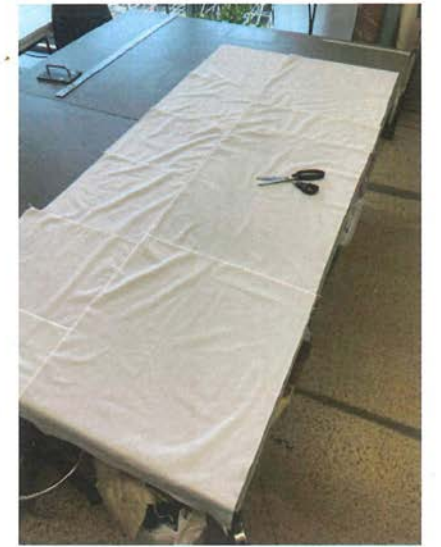
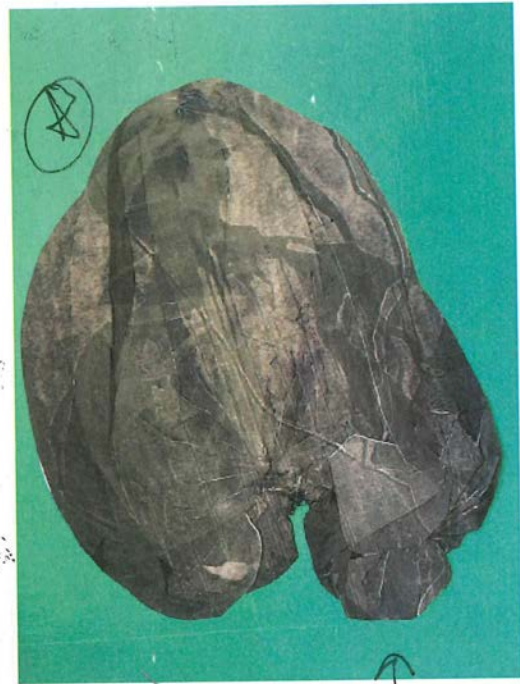
(NOT AS EFFECTIVE!)



color has bunched up

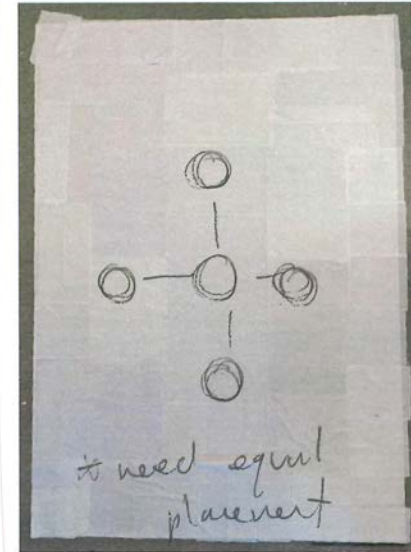


use of scraps as ties

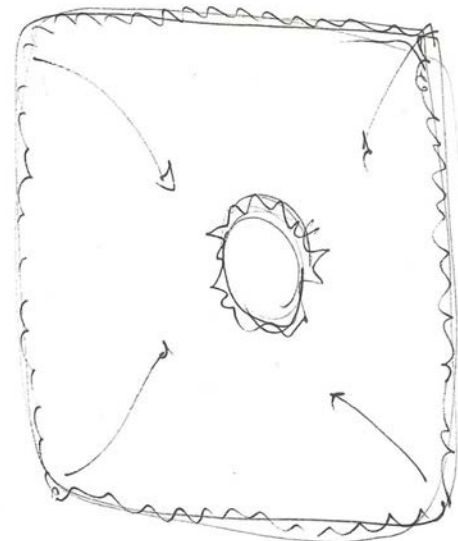


prefer a slight graphic to give me variability

diff blends of poly cotton means tone variations here too ↓



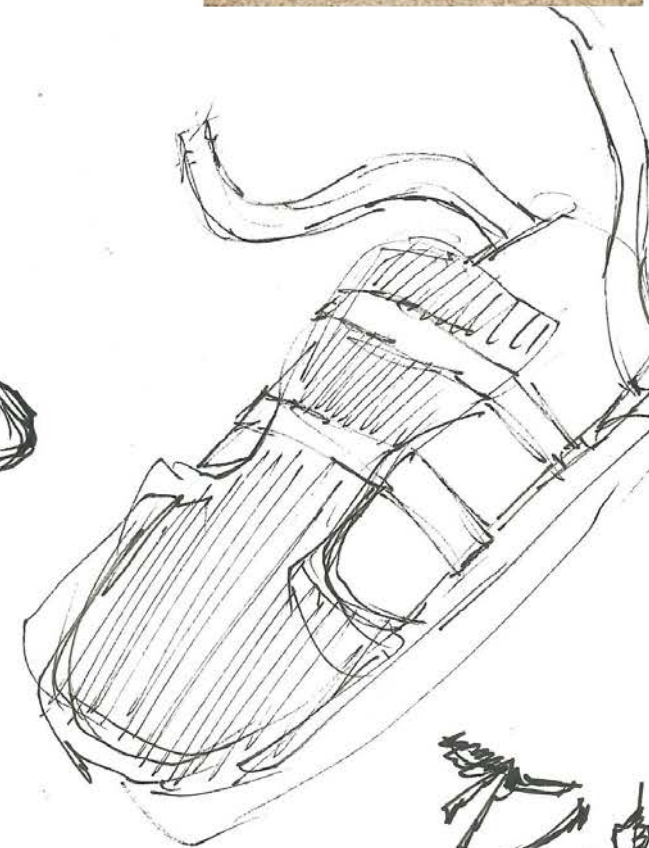
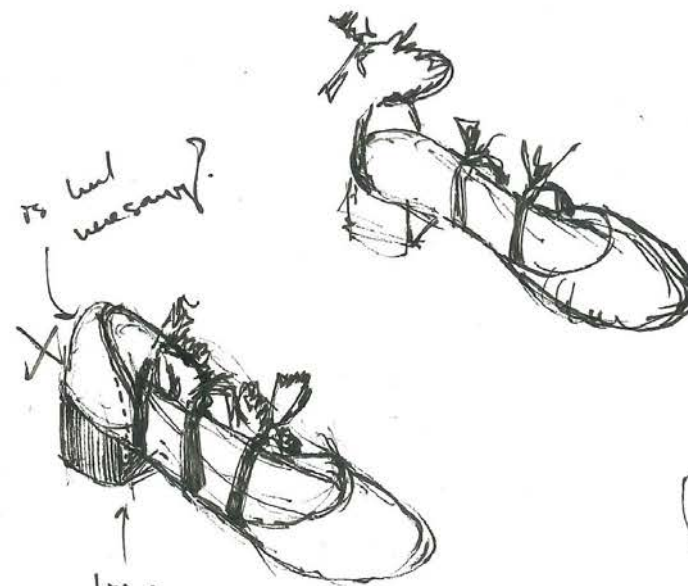
fold print on polycotton



transforming used garments leads to many offcuts
as complicated shapes are returned to simple forms

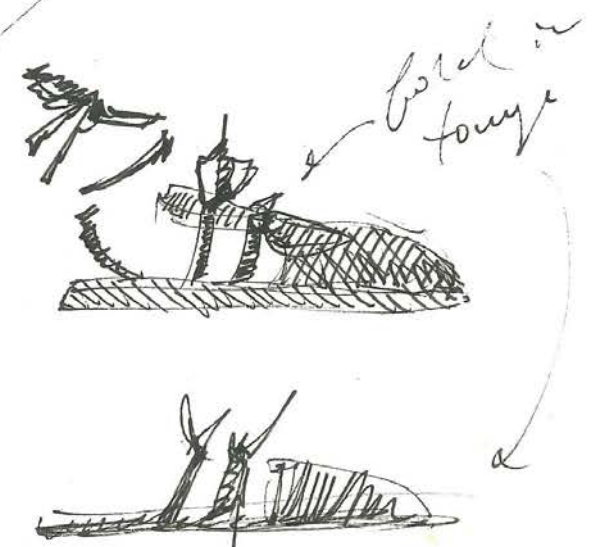


color???



wk 1/3

3 ties?









motifs in this collection are designed to be size adaptable and worn in multiple different ways





built from repurposed garments using a zero-waste approach



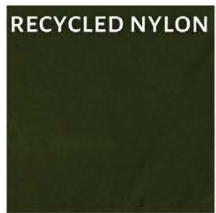
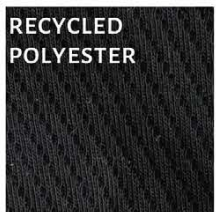
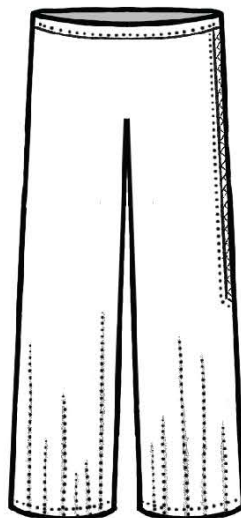
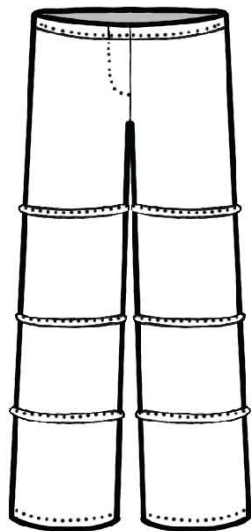
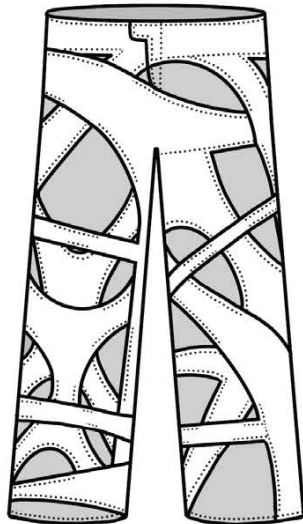
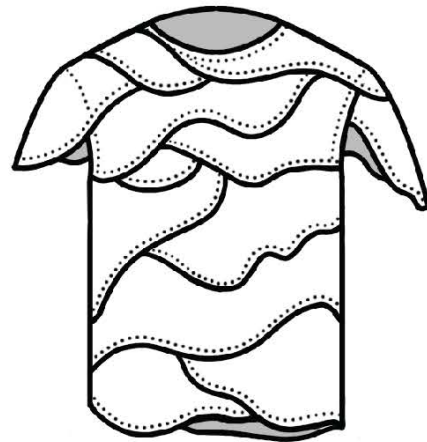
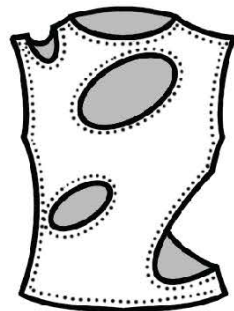
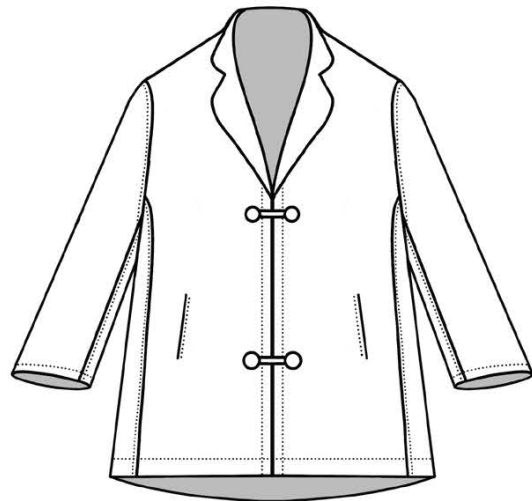
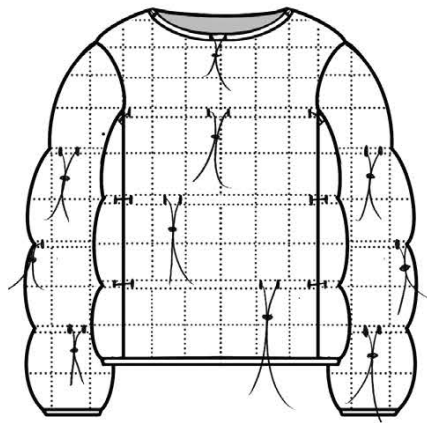
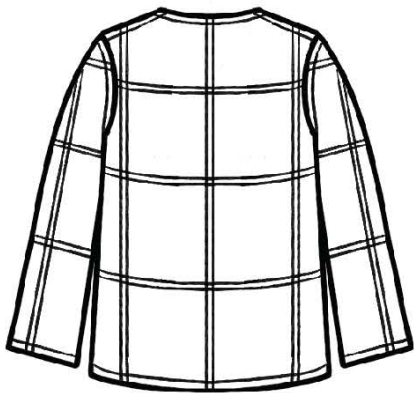
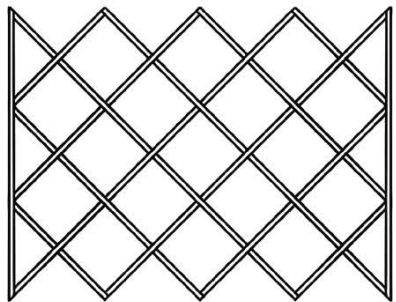
*no approach is perfect
but we must challenge traditional ideas of use and reuse*

all unused material from this collection (from pieces of thread to fabric offcuts to used garments) has been collected. while not all of it has been used in this collection, none of it will go to waste.





IMPRESSIONS



IMPRESSIONS OF HISTORY HAVE A LASTING
INVISIBLE IMPACT ON THE PRESENT

ARGUABLY NONE MORE SO THAN THE LASTING
IMPACT OF MILITARISM, COLONIALISM, AND
GENDER ROLES

THIS COLLECTION BREAKS DOWN AND
COMBINES OPPOSING ELEMENTS AND THEMES
FROM 19TH CENTURY SPAIN TO FORM MODERN
VISUALIZATIONS OF PAST CONFLICTS



FROM THE DECADENCE OF MILITARY UNIFORMS
TO THE LOOSE INVISIBLE BRUSHSTROKES OF
IMPRESSIONIST PAINTINGS, DECONSTRUCTING
THE PAST GIVES US A WINDOW TO THE PRESENT

USING UPCYCLED AND RECYCLED MATERIALS
TO POSITION THE COLLECTION IN OUR PRESENT
MOMENT

MODERN "UNIFORM"

puffer jacket represents both a technical and aesthetic function

over engineer

- reflective elements
- highly visible color
- same color shade or gradient
- cropped?

rather than separate leather accessory

embed into the identity

MEANING: non-functional but essential!

CONCEPTS

V01 V02 V03 V04

X2 + interface

leather scraps from earlier pants

FW12 BASE

In Cuba, Conscriptions militarized most of the islands

a delicate/exposed is revealed through a sheer structure

transformable harness/bag

ornamental as attachments

fix pattern calculations to account for grid seams

Short sleeve captures layers better...

Womens appear to either side of carriage, girls from the rear

1. Inner emotions veiled by expectations

2. Solid structural foundations (society, architecture)

transparency test

use embroidery instead of ribbon!

Black pants embroidery instead of ribbon



