

# **YASMEEN W. ABDAL**

BROOKLYN, NY  
+1 347 646 2217  
YAZZABDAL@GMAIL.COM

**2025**  
Selected Work

TABLE

OF

EXHIBITIONS

- 01\_KUWAIT PAVILION, VENICE ARCHITECTURE BIENNALE
- 02\_THE ARCHITECTURAL PRINTSCAPE
- 03\_THE ARCHITECTURAL PRINTSCAPE: IN PRINT
- 04\_FUTERSCAPE EXHIBITION

INTERIOR DESIGN: ACADEMIC

- 05\_A HOUSE AND 7 DOORS
- 06\_SOLAR SCOOP
- 07\_DEVIANT ANATOMY

INTERIOR DESIGN: PROFESSIONAL WORK

- 08\_SPUNSPRINKLES FACTORY
- 09\_MAPLE AND ASH

GRAPHICS AND PUBLICATIONS

- 10\_ARABIC GRAPHIC DESIGN NEWSPAPER
- 11\_A EULOGY TO KUWAIT’S FORGOTTEN MODERNITY
- 12\_UM KALTHOOM

CONTENTS



# KUWAIT PAVILION, VENICE ARCHITECTURE BIENNALE

**TEAM SIZE:** 2  
**PROGRAM:** train station, architectural narrative  
**STATUS:** installed may 2023, venice  
**TYPE:** exhibition

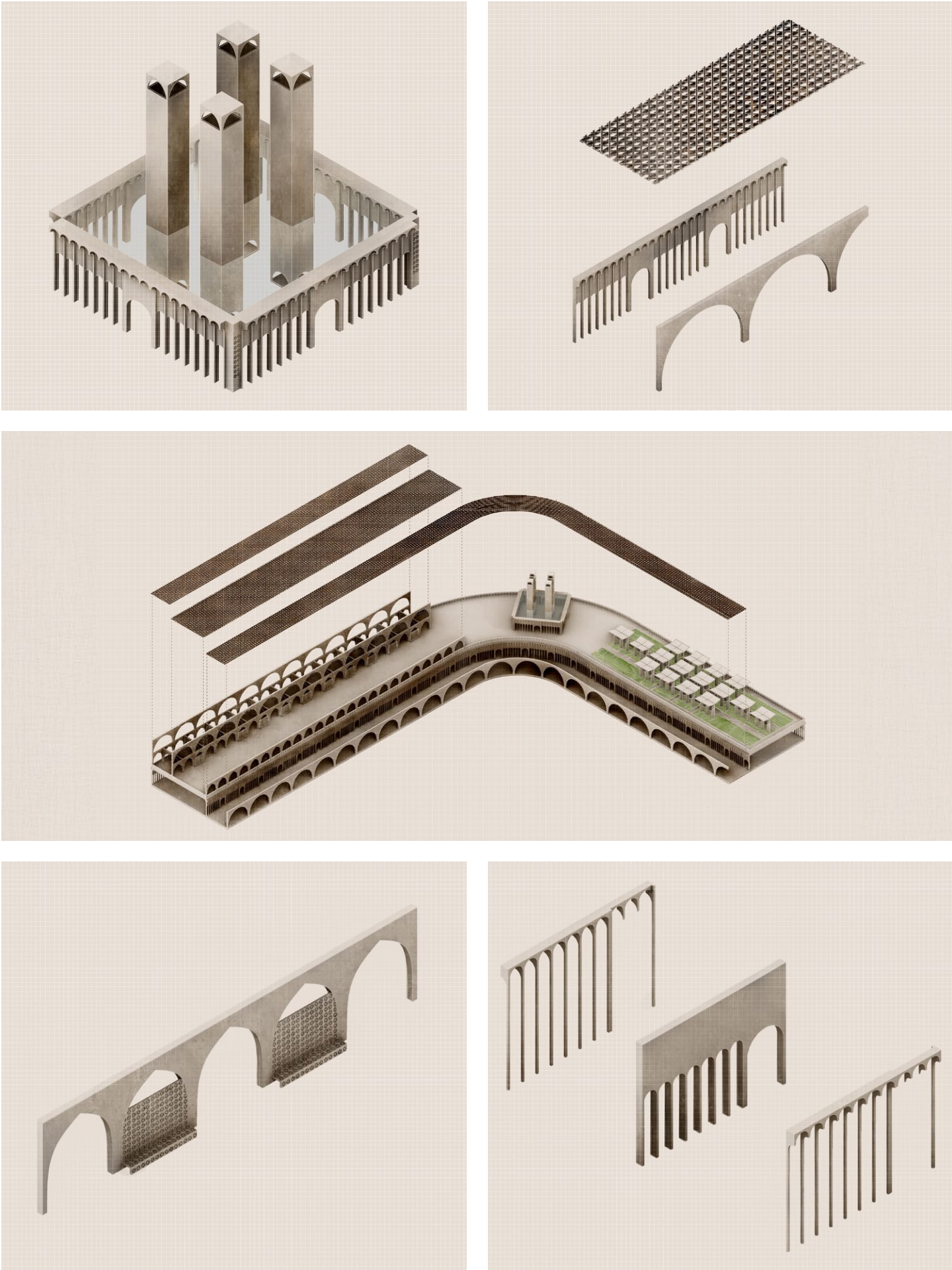
**DESCRIPTION:**  
Contributing to Kuwait’s Pavilion at the Venice Architecture Biennale 2023, Desert Architecture: Diction a Design Methodology is a research driven project that intertwines generational, architectural and linguistic identities to establish a design discourse bridging historical and contemporary Kuwaiti architecture. The study examines Kuwait’s architectural history, reviving forgotten elements of its traditional built environment and terminology to define a lost vernacular. By reintroducing these elements within a modern architectural narrative, this project seeks to reconnect contemporary design with Kuwait’s architectural heritage.

The three part project begins with a dictionary authored by Yasmeen Abdal; the dictionary introduces a new methodology for designing architecture in Kuwait based on historical language and vernacular architecture, establishing a methodological approach for contemporary design. Developed in collaboration with Architect Qutaiba Buyabes the second part of the project is a design proposal that explores the practical application of the dictionary’s principles in architectural practice. The final component of the project is a visual documentation and archival study, filmed by Fatima Al Fulaij in collaboration with Yasmeen Abdal and Qutaiba Buyabes. This study aims to document and catalog the existing traditional architectural elements of the Al-Mubarkiya Historic District, preserving and highlighting Kuwait’s architectural heritage.

**PERSONAL RESPONSIBILITIES:**  
research  
design concepts & schematic  
design development  
architectural visualization  
model making







1 design solutions for the tram station, merging traditional elements for modern construction.



2 project display at the venice biennale 2023.



# THE ARCHITECTURAL PRINTSCAPE

**TEAM SIZE:** 1  
**PROGRAM:** architectural narrative  
**STATUS:** installed december 2024, brooklyn ny  
**TYPE:** exhibition

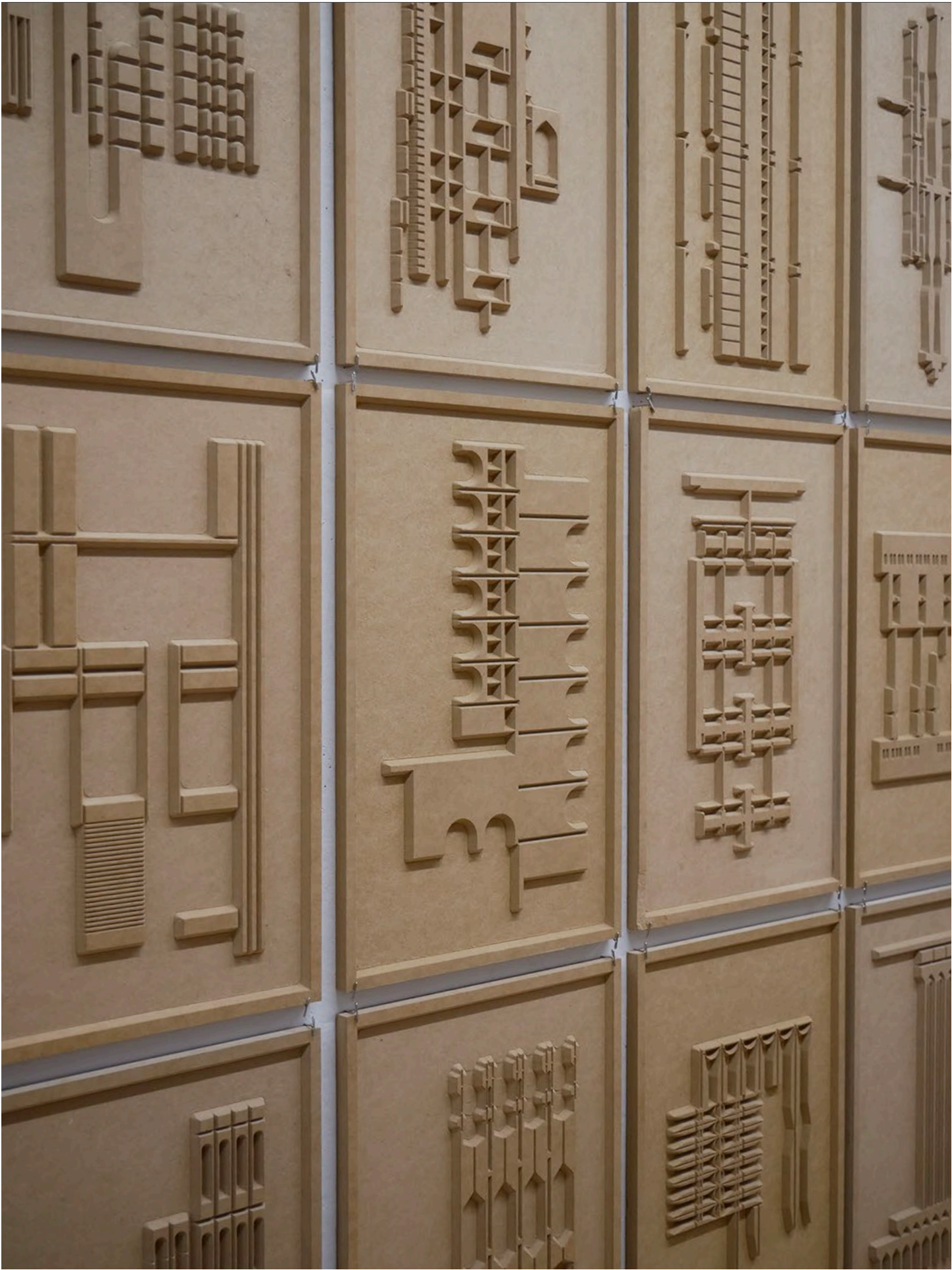
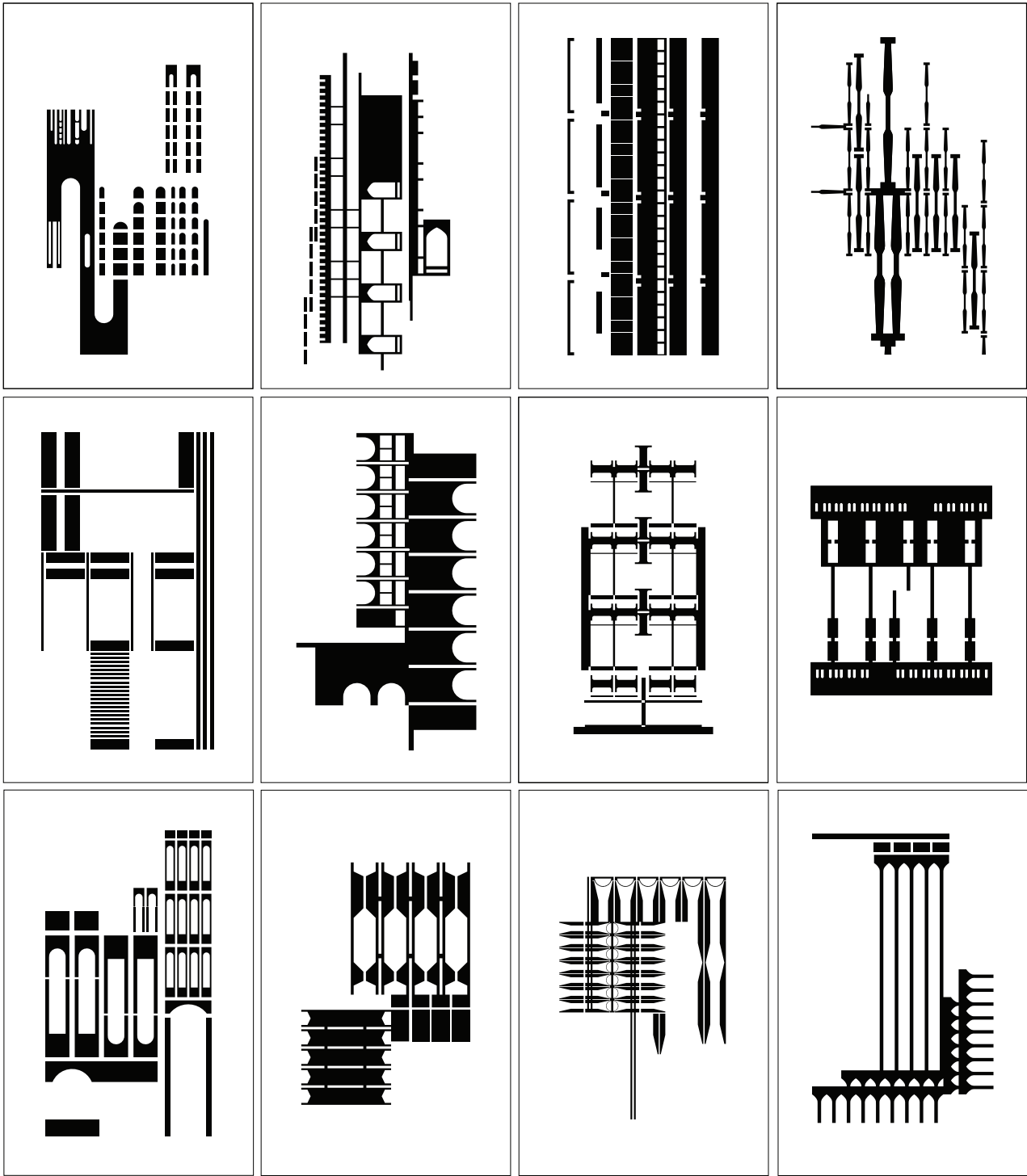
**DESCRIPTION:**  
The Architectural Printscape is the visual language of a cityscape. It is the way we read our cities through surface, material, form, and structure. Spaces are mediums that communicate societal values, preserve memory, and articulate heritage. This study positions the architectural printscape as an essential element for understanding space as narrative communication. Weaving contemporary expressions of cultural identity into space, creates a spatial palimpsest embedded with cultural information.

I analyze Kuwait’s architectural printscape through three primary lenses: material (building blocks), print (murals), and form (structure). Examined within spatial and temporal contexts, these elements develop a symbolic, nonlinear, palimpsestic narrative. By reinterpreting architecture as a communicative medium—something to be read—I position it as a layered palimpsest embedding the urban environment with social, cultural, and political meaning. Architecture becomes an instrument for expressing historical and future identities. Through the lens of non-places, supermodernity, and identity loss under the homogenizing forces of globalization, I show how the architectural printscape reclaims meaning and resists cultural erasure, furthering the argument of architecture as both a container and driver of cultural narratives. Architecture thus becomes a living documentation—a printscape of our personal, collective, and historical narratives through which we exist.

**PERSONAL RESPONSIBILITIES:**  
research & writing  
design concepts & schematic  
design development  
model making  
publication design  
type setting  
exhibition display











5 concrete blocks catalog titled “weaving heritage” & cnc foam models of samples.



6 project installation.



# THE ARCHITECTURAL PRINTSCAPE: IN PRINT

**TEAM SIZE:** 1

**PROGRAM:** architectural narrative

**STATUS:** completed may 2025, printed edition of 16

**TYPE:** graphics and publications

**DESCRIPTION:**

This publication brings together the design, writing, and research developed for The Architectural Printscape. Building on the narrative established in my thesis research, the book design reflects the architectural printscape, using archival materials and a palimpsestic structure. It mirrors how cities are read through layered histories and materials. Typography and visual layout function as architectural elements, with scale, alignment, and hierarchy reinforcing the central metaphor of reading architecture through a layered, palimpsestic narrative. The reading experience is thus choreographed to resemble the act of navigating a city: not in a linear or uniform way, but through detours, encounters, and shifts in perspective.

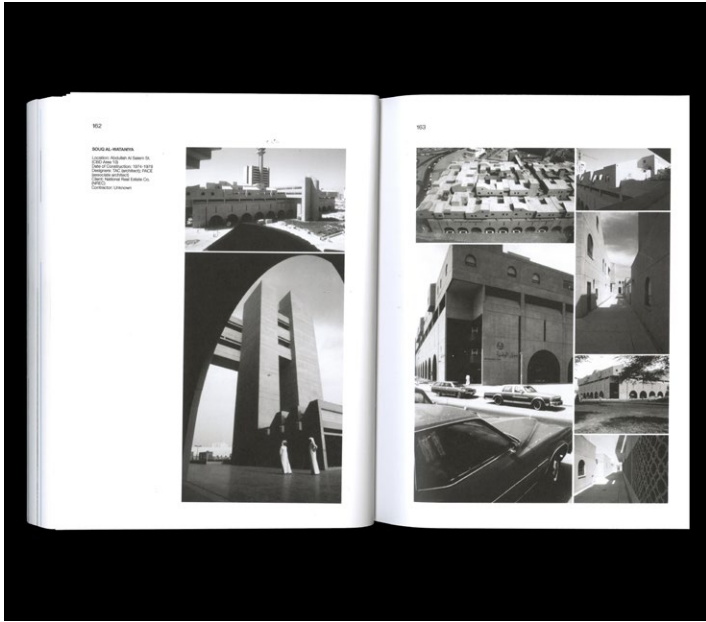
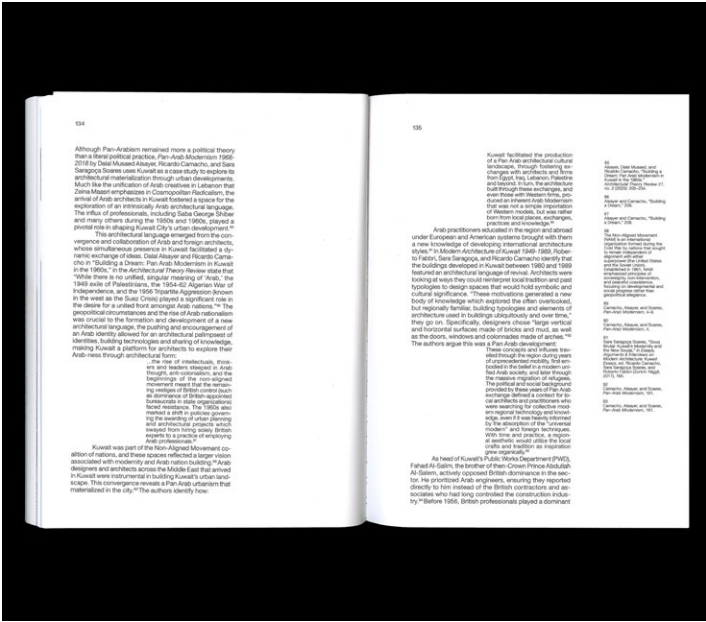
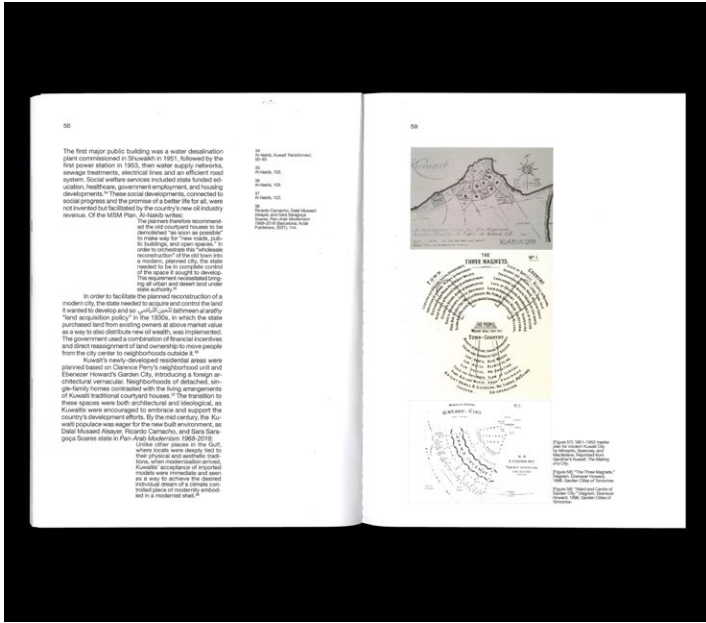
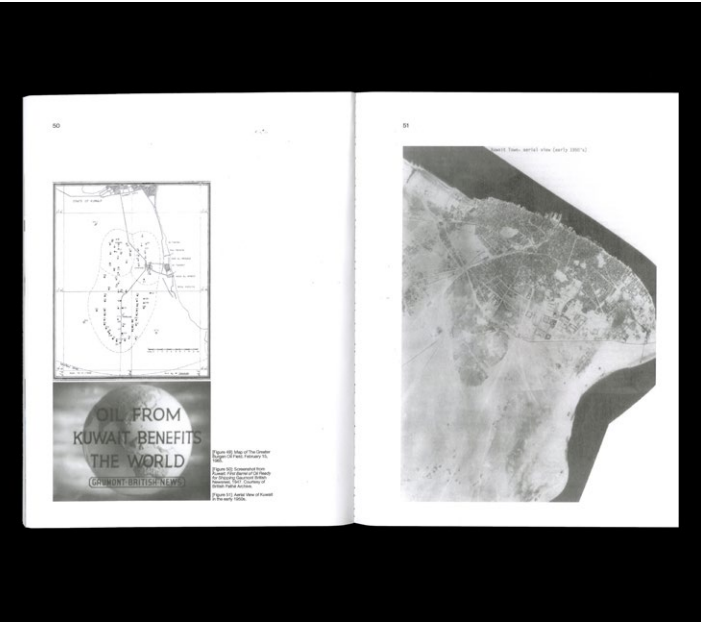
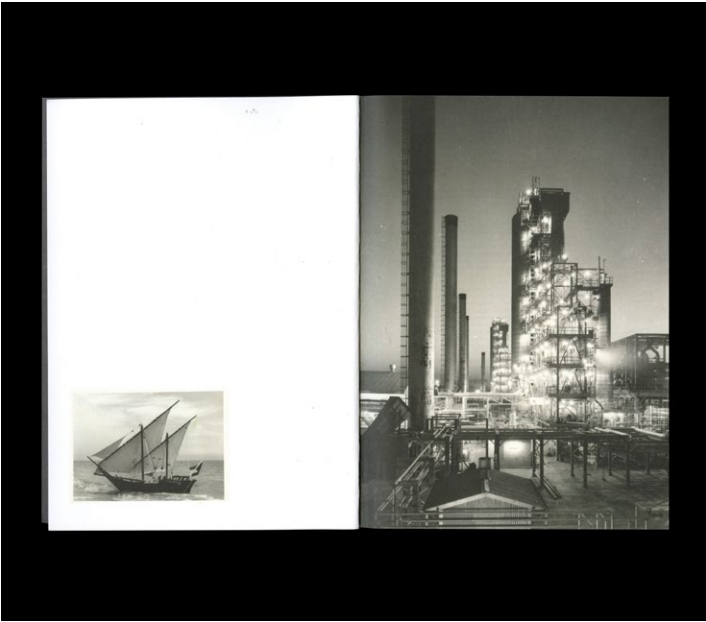
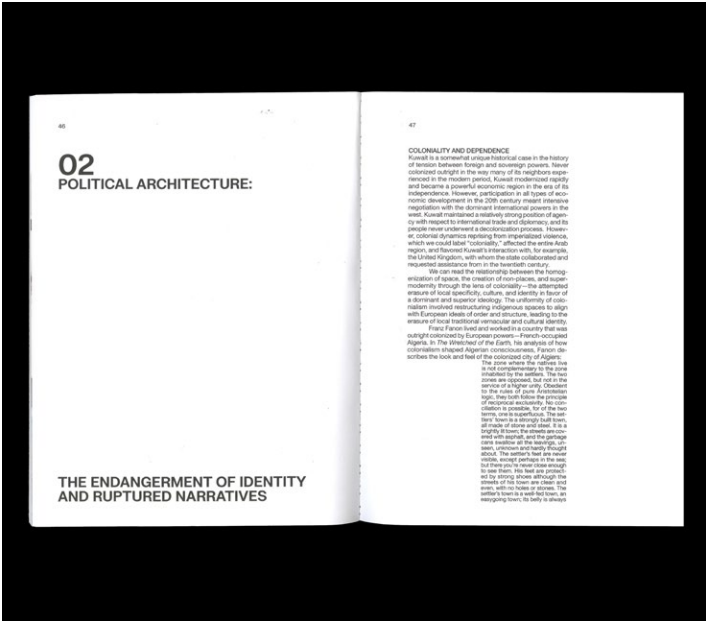
This design strategy reinforces the central metaphor of reading architecture as a layered text, where meaning is not singular or static, but continually rewritten through historical, social, and sensory engagements. The book is not simply a container for research—it is an active participant in the storytelling, embodying the very spatial and temporal complexities it seeks to articulate.

**PERSONAL RESPONSIBILITIES:**

research & writing  
design concepts & schematic  
design development  
typography & layout  
production & risograph printing  
type setting  
cover design









# FUTERSCAPE EXHIBITION

**TEAM SIZE:** 2  
**PROGRAM:** multi-sensory exhibit  
**STATUS:** installed april 2025, brooklyn ny  
**TYPE:** exhibition design

**DESCRIPTION:**  
Co-curated by Yasmeen Abdal and Professor Jean Brennan, Futurescape is a multi-sensory exhibition and book launch that explores the speculative potential of climate resilient plants through natural dye, scent, and culinary artifacts. Developed in conjunction with the publication Recipes for a Warmer World: Cooking up Plants of the Futurescape as Colors, Scents, and Foods (FRUIT&ROT, 2024), the project invites visitors to engage with the sensory and cultural dimensions of plants likely to thrive in future climate conditions.

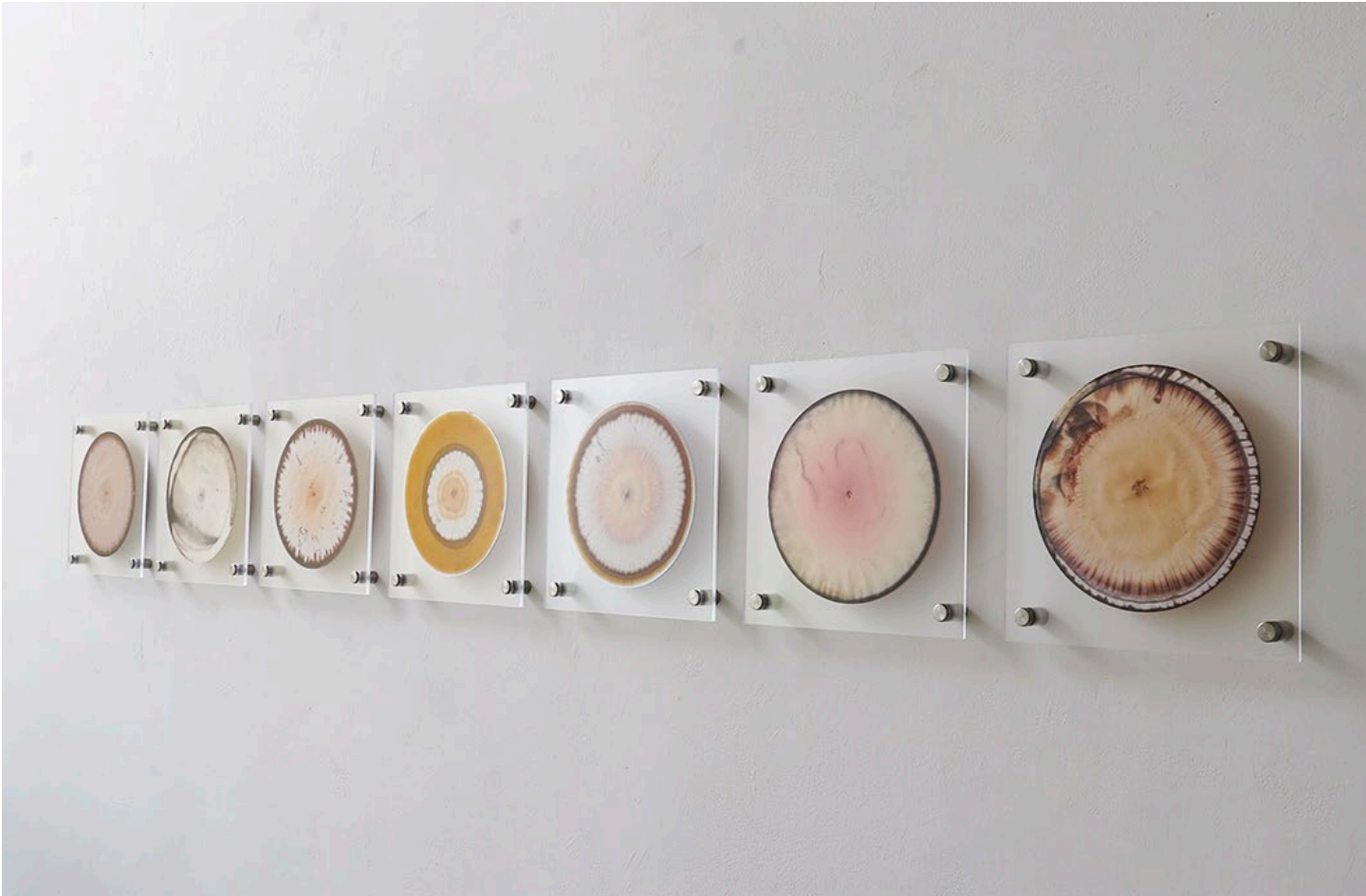
The exhibition features dye swatches, herbal scents, and food-based recipes derived from seven selected plant species—accompanied by research artifacts and video interviews that document the creative and scientific processes behind the work. Essays in the 146-page risograph-printed book, written by Pratt faculty Jean Brennan, Cindie Kehlet, Audrey L.M. Lindsey, and herbalist Sarah Elisabeth, reflect on topics such as ethnobotany, the chemistry of color, the colonization of pokeweed, and a speculative hike along the Appalachian Trail.

Futurescape was designed to foreground materiality and storytelling while fostering ecological imagination. The project was published by FRUIT&ROT, printed by Lucky Risograph and Conveyor Studio, and generously supported by the Pratt STEAMplant Initiative.

**PERSONAL RESPONSIBILITIES:**  
design concepts & schematic  
design development  
exhibition design, layout and planning  
assemble, document and review all research artifacts  
produced additional materials such as video interviews, risograph prints and artifacts  
exhibition communications, logistics, promotional content and branding







9 installation views.



10 installation views.



# A HOUSE AND 7 DOORS

**TEAM SIZE:** 1

**PROGRAM:** emergency housing

**STATUS:** unbuilt, completed december 2020

**TYPE:** interior design: academic project

**DESCRIPTION:**

The Syrian refugee crisis stands as the largest displacement crisis of our era, leaving countless individuals stateless and struggling against social stigma. This project reimagines refugee camps as dynamic, self-sustaining communities, drawing inspiration from the fabric of Arab society and the tradition of extended family living.

Using modular extensions, the design fosters a sense of belonging by creating adaptable spaces that evolve with the needs of the residents. Re-purposed containers form essential community facilities such as learning centers, laundry spaces, and cooperative hubs for self-employment. These cooperative spaces empower individuals to produce and sell goods, fostering economic independence within the camp.

More than just shelter, the project envisions a self-adjusting, interconnected network—one where relationships extend beyond mere cohabitation to collaborative growth. Through collective agency, residents shape their environment, transforming temporary settlements into sustainable, evolving communities.

**PERSONAL RESPONSIBILITIES:**

design concepts & schematic

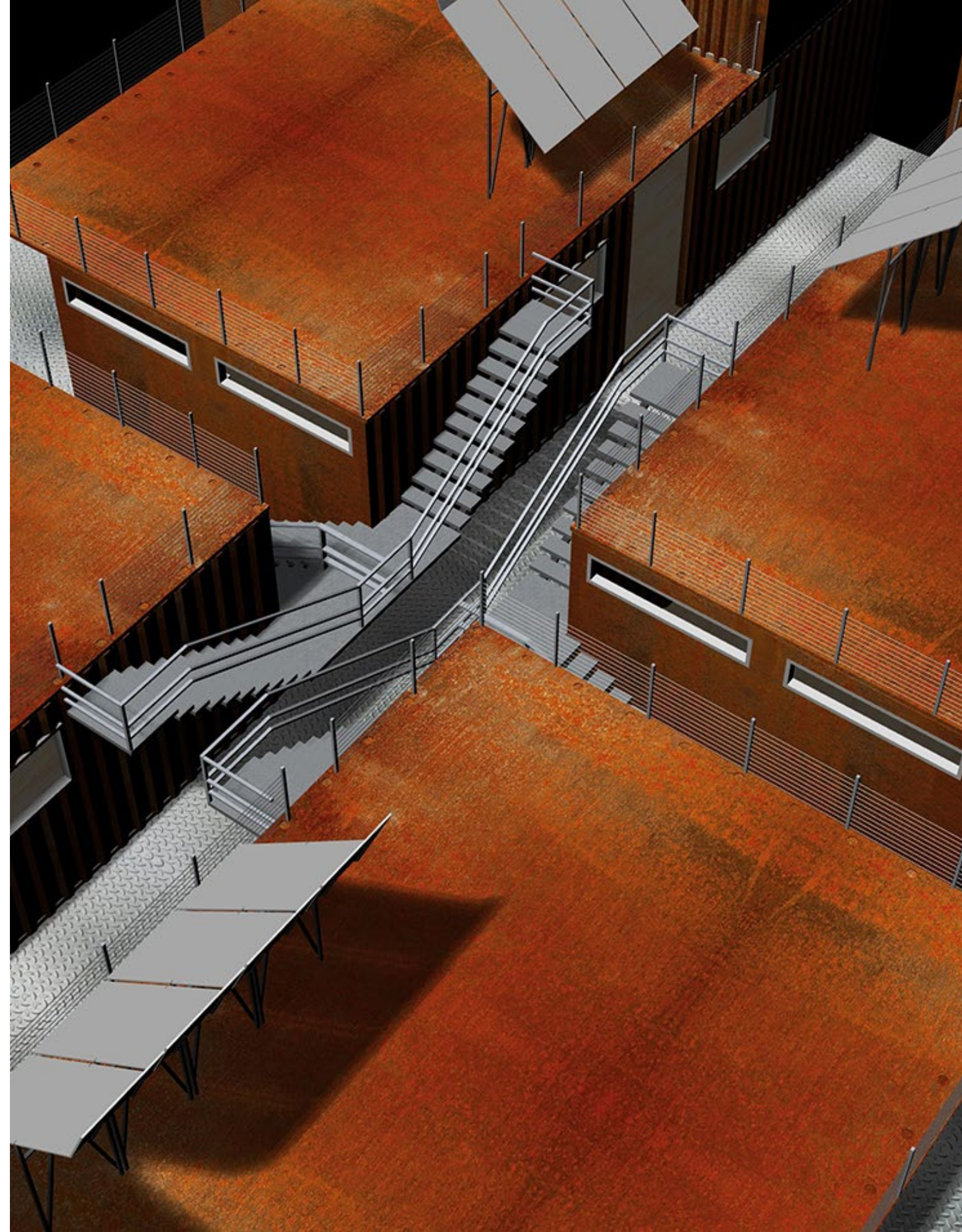
design development

construction drawings

presentation drawings

fabrication drawings

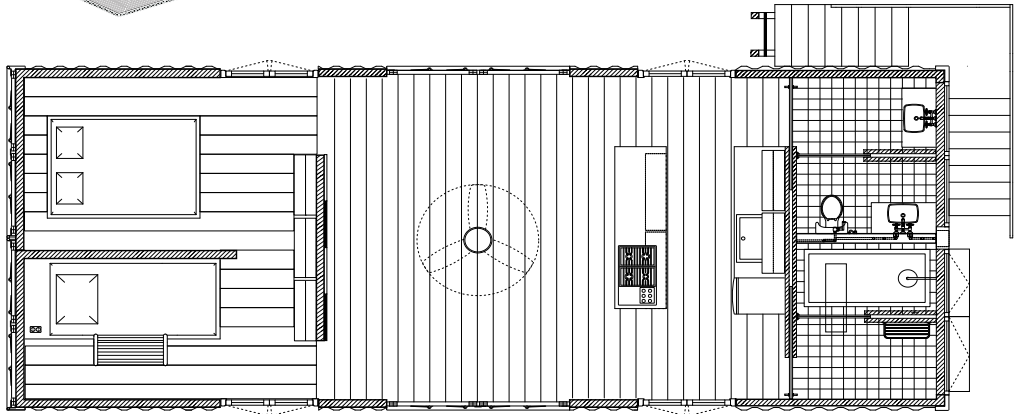
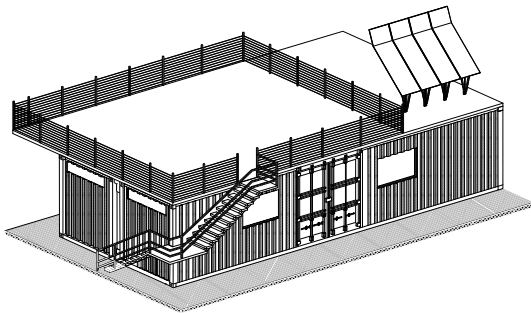
architectural visualization





# UNIT A

2 X 40' CONTAINERS (2-4 OCCUPANTS)  
1 KITCHEN - 1 BATHROOM - 2 BEDROOMS - ROOF GARDEN

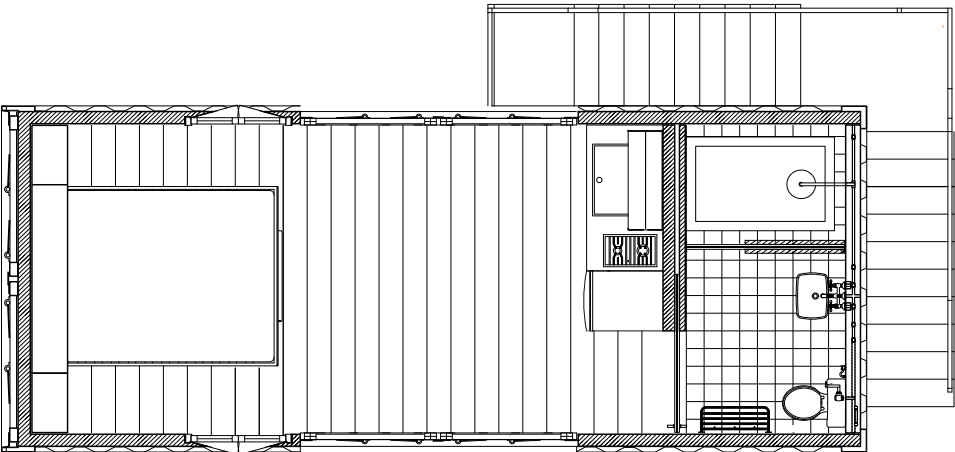


01

UNIT A PLAN

# UNIT B

1 X 20' CONTAINER (2 OCCUPANTS)  
1 KITCHEN - 1 BATHROOM - 1 BED / DINE

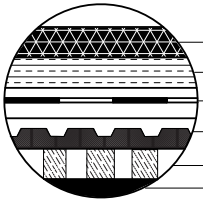
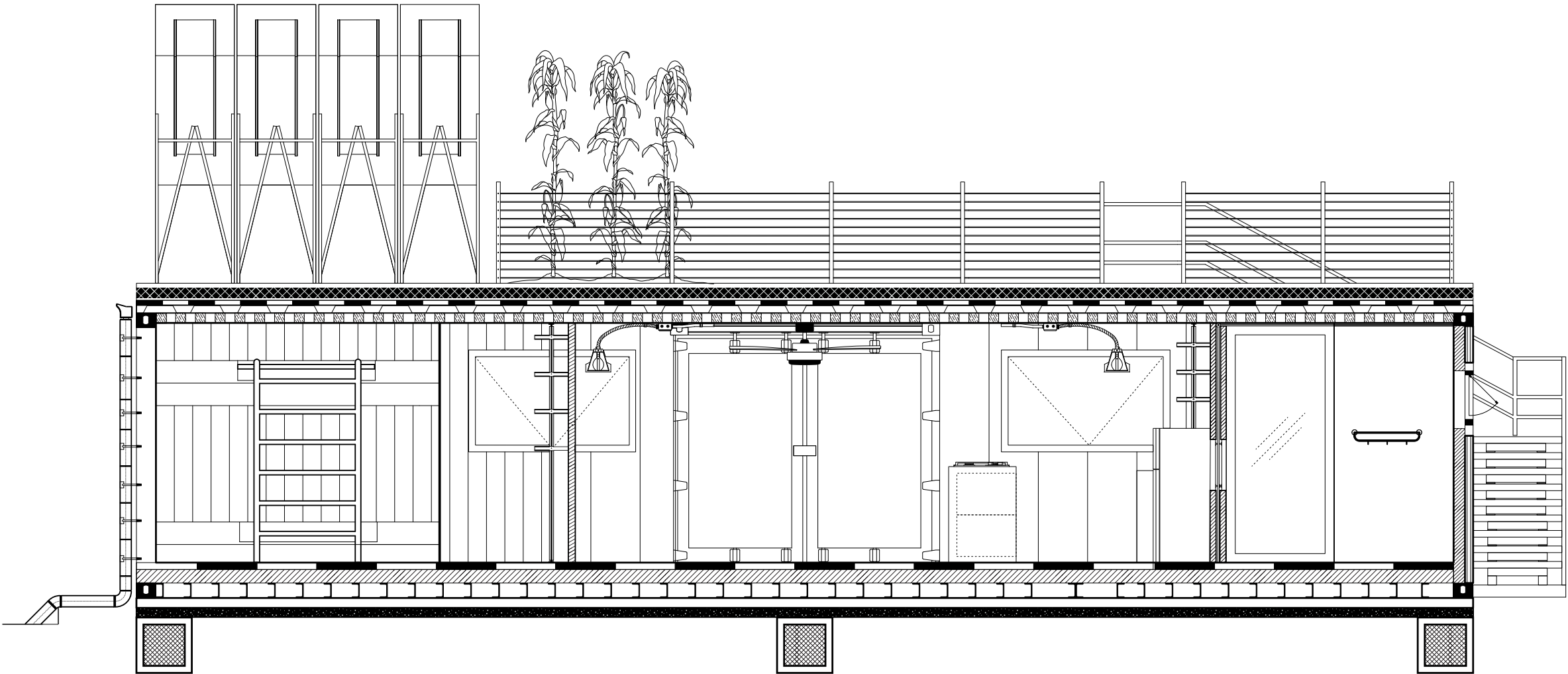


02

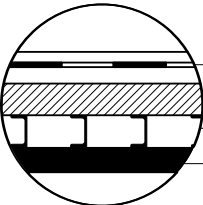
UNIT B PLAN

# UNIT A

STRUCTURAL DETAIL SECTION



- ROOF RUG PLANTING MEDIUM
- 8" RIGID INSULATION PITCHED
- 3/4" PLYWOOD
- CORRUGATED ROOF PANEL
- 2.5" MTL FRAMING
- 1/2" GYPSUM WALL BOARD

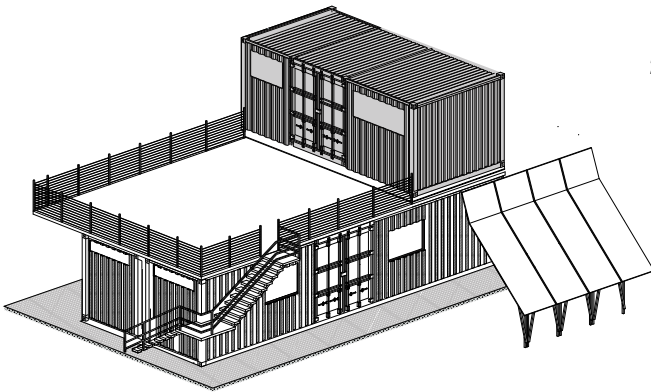


- PLYWOOD FLOORING
- CONTAINER SUBFLOORING
- C - CHANNEL CONTAINER STRUCTURE
- GYPSUM WALL BOARD

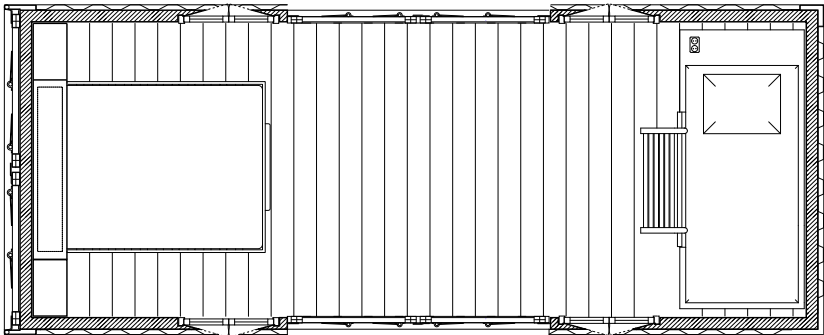
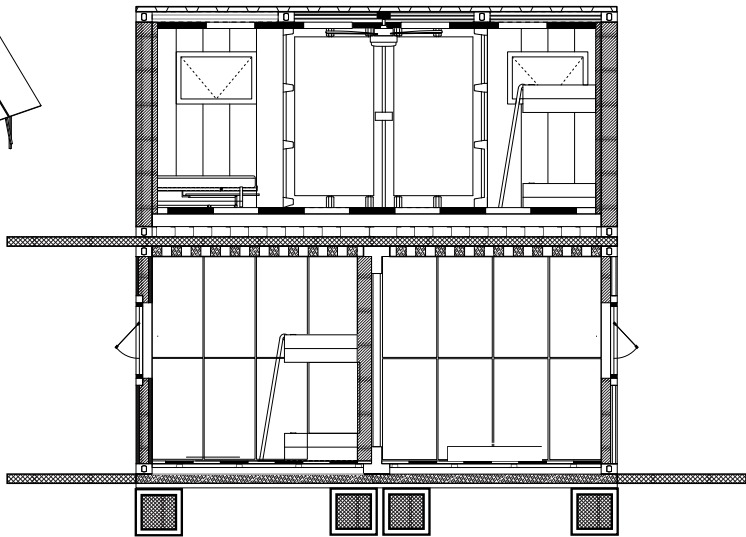


# UNIT A + E01

2 X 40' CONTAINER + 1 X 20' CONTAINER (8 OCCUPANTS)  
1 KITCHEN -1 BATHROOM - 3 BEDROOMS - 6 BEDS

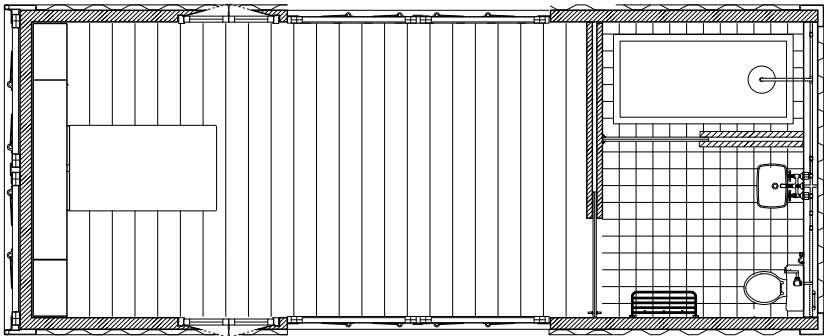


04 UNIT A + E01 SHORT SECTION



05 E01 PLAN

**E01**  
1 X 20' CONTAINER (2-4 OCCUPANTS)  
3 BEDS - BUILT IN FEATURES

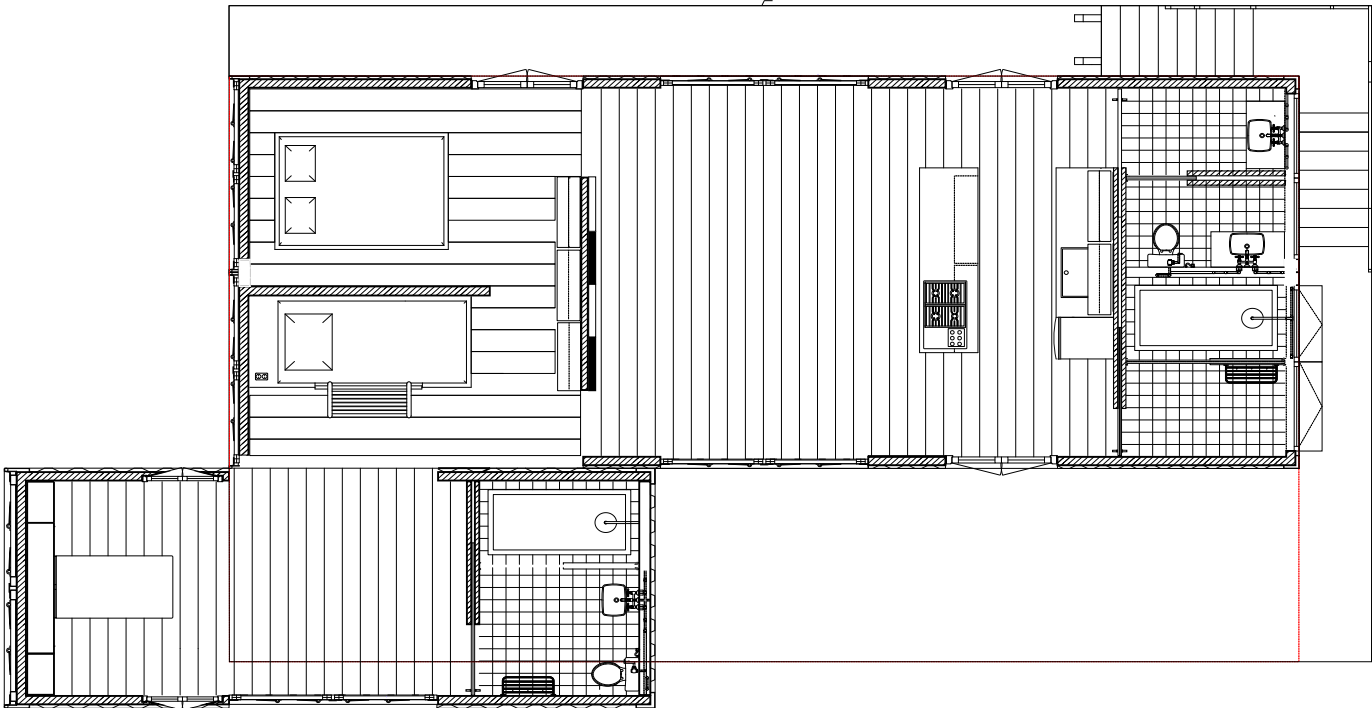


06 E02 PLAN

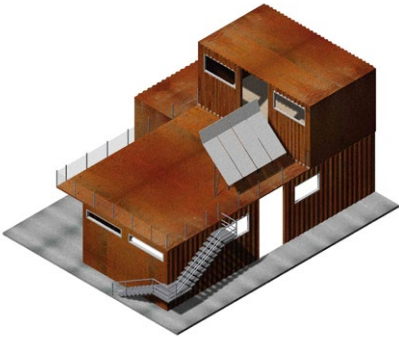
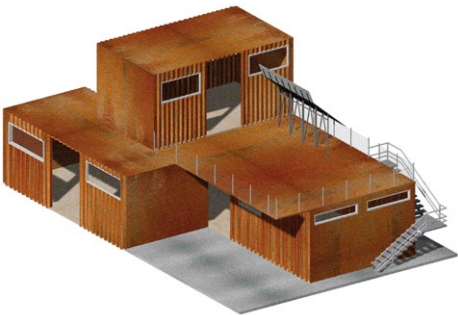
**E02**  
1 X 20' CONTAINER (2 OCCUPANTS)  
1 BED - 1 BATH - BUILT IN FEATURES

# UNIT A + E01 + E02

2 X 40' CONTAINER + 2 X 20' CONTAINER (10 OCCUPANTS)  
1 KITCHEN -2 BATHROOM - 4 BEDROOMS - 7 BEDS



07 UNIT A + E01 + E02 PLAN



EXTERIOR PERSPECTIVE



INTERIOR PERSPECTIVE



# SOLAR SCOOP

**TEAM SIZE:** 1

**PROGRAM:** library

**STATUS:** unbuilt, completed may 2018

**TYPE:** interior design: academic project

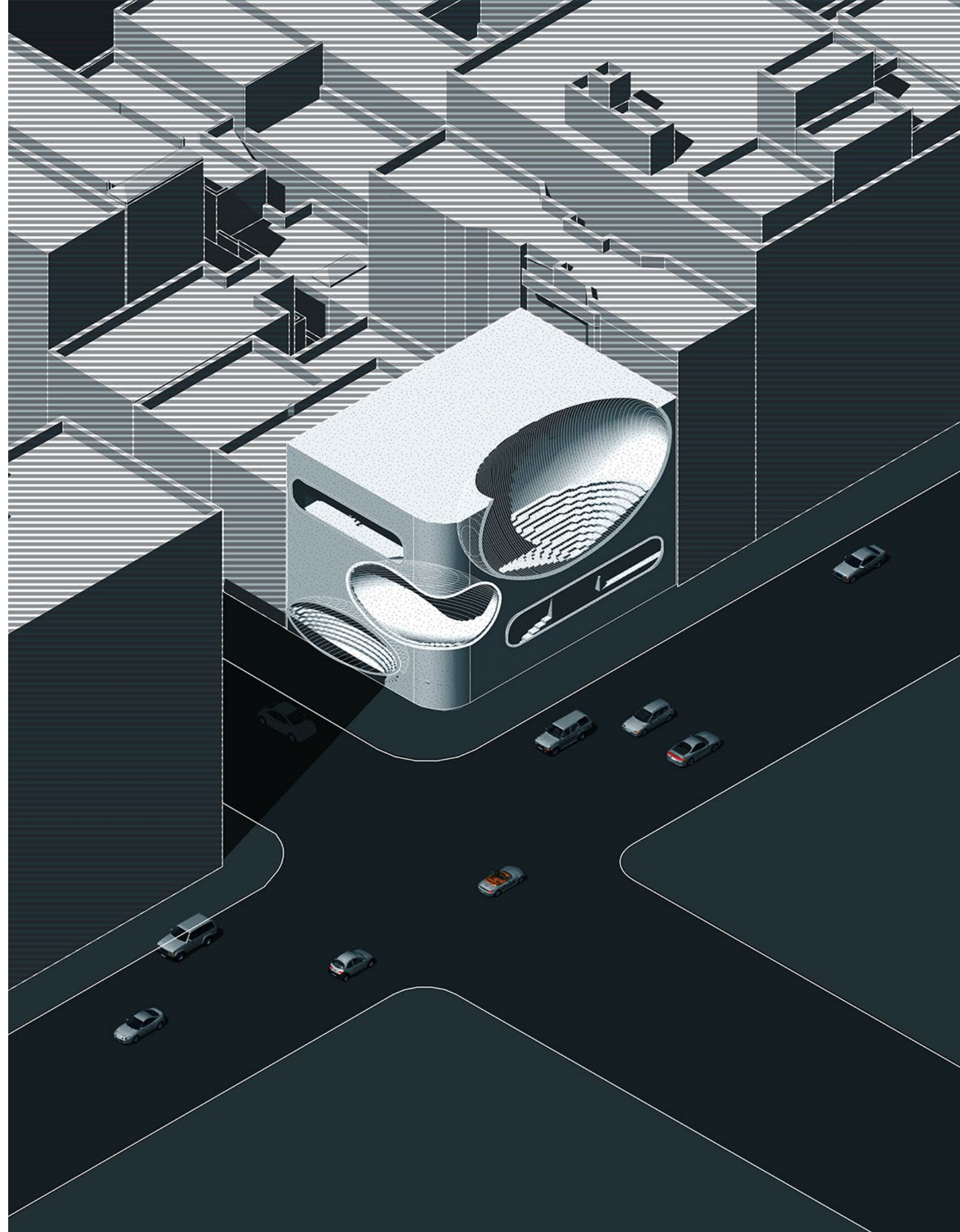
**DESCRIPTION:**

Situated on a corner site in the Lower East Side, Solar Scoop is a library that explores the interplay between New York City's rigid urban grid and the fluid movement of the sun across the equinoxes.

Using a solar carving approach, the design strategically shapes apertures and spaces within the massing, allowing natural light to sculpt the architecture. This method challenges the static nature of the built environment by introducing a dynamic relationship between structure and celestial movement, creating a space where urban infrastructure and natural phenomena converge.

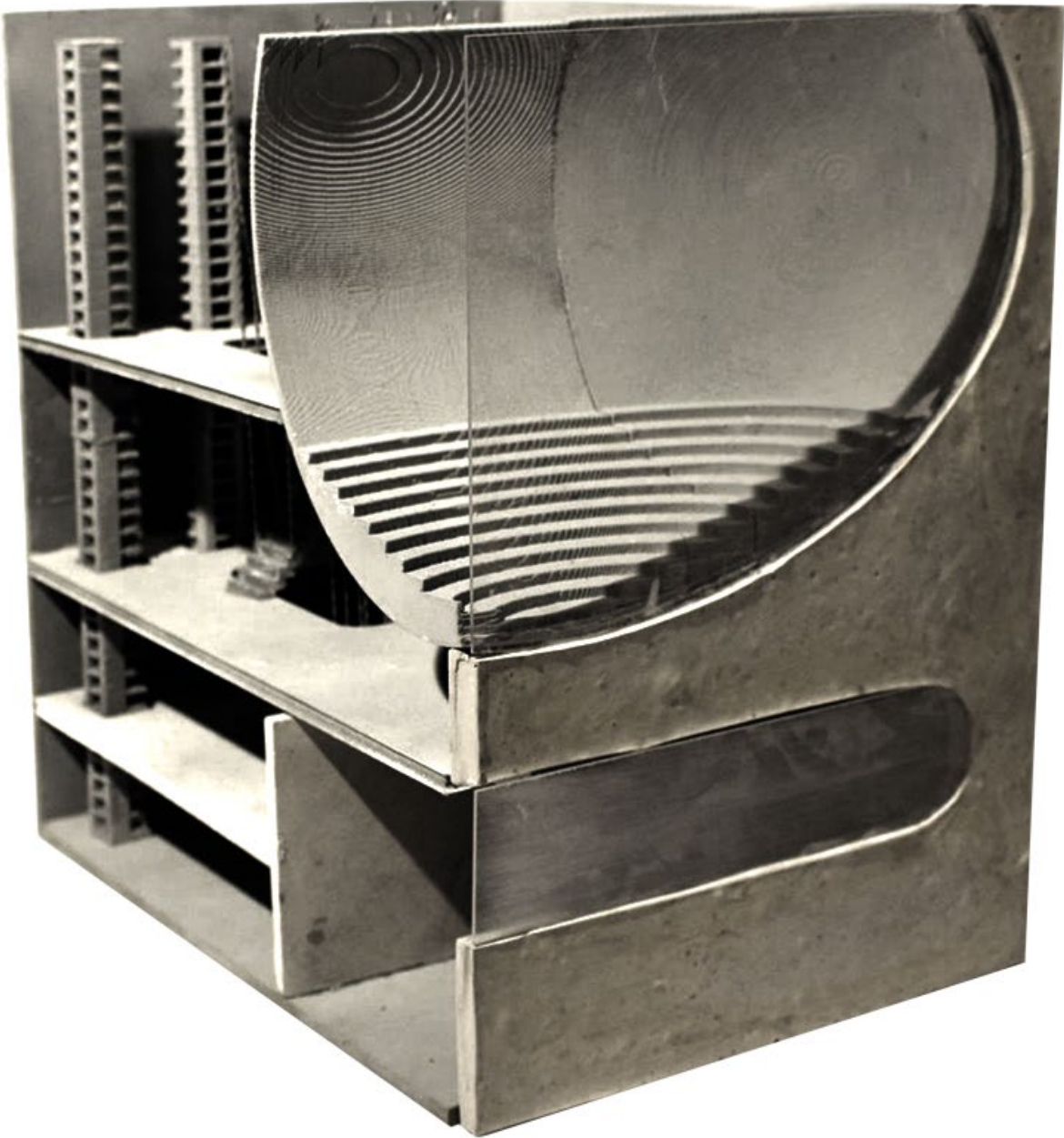
**PERSONAL RESPONSIBILITIES:**

design concepts & schematic  
design development  
construction drawings  
presentation drawings  
fabrication drawings  
architectural visualization

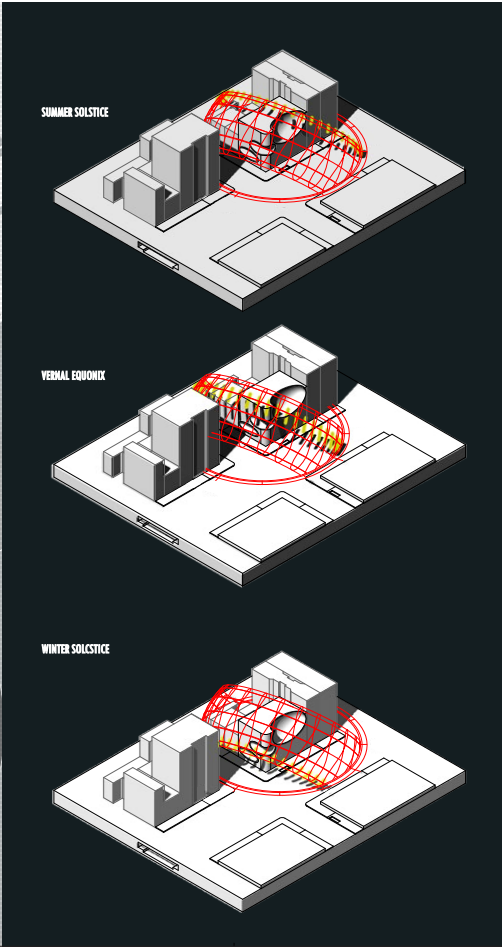
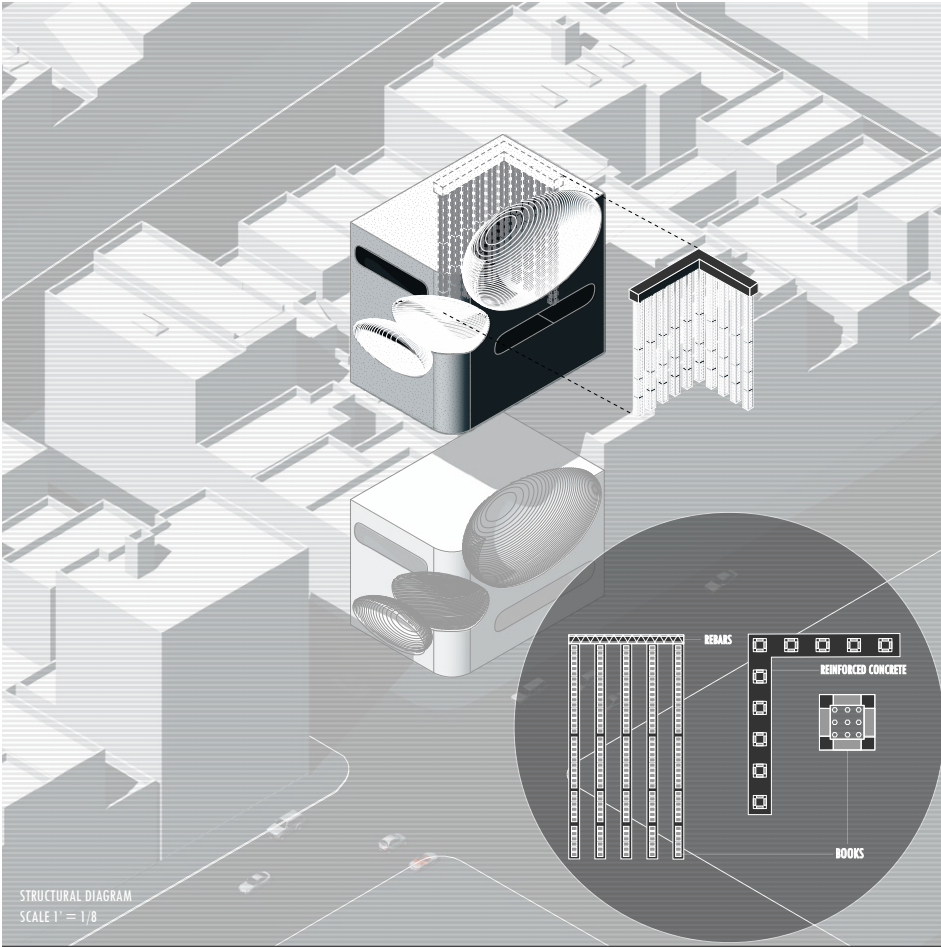
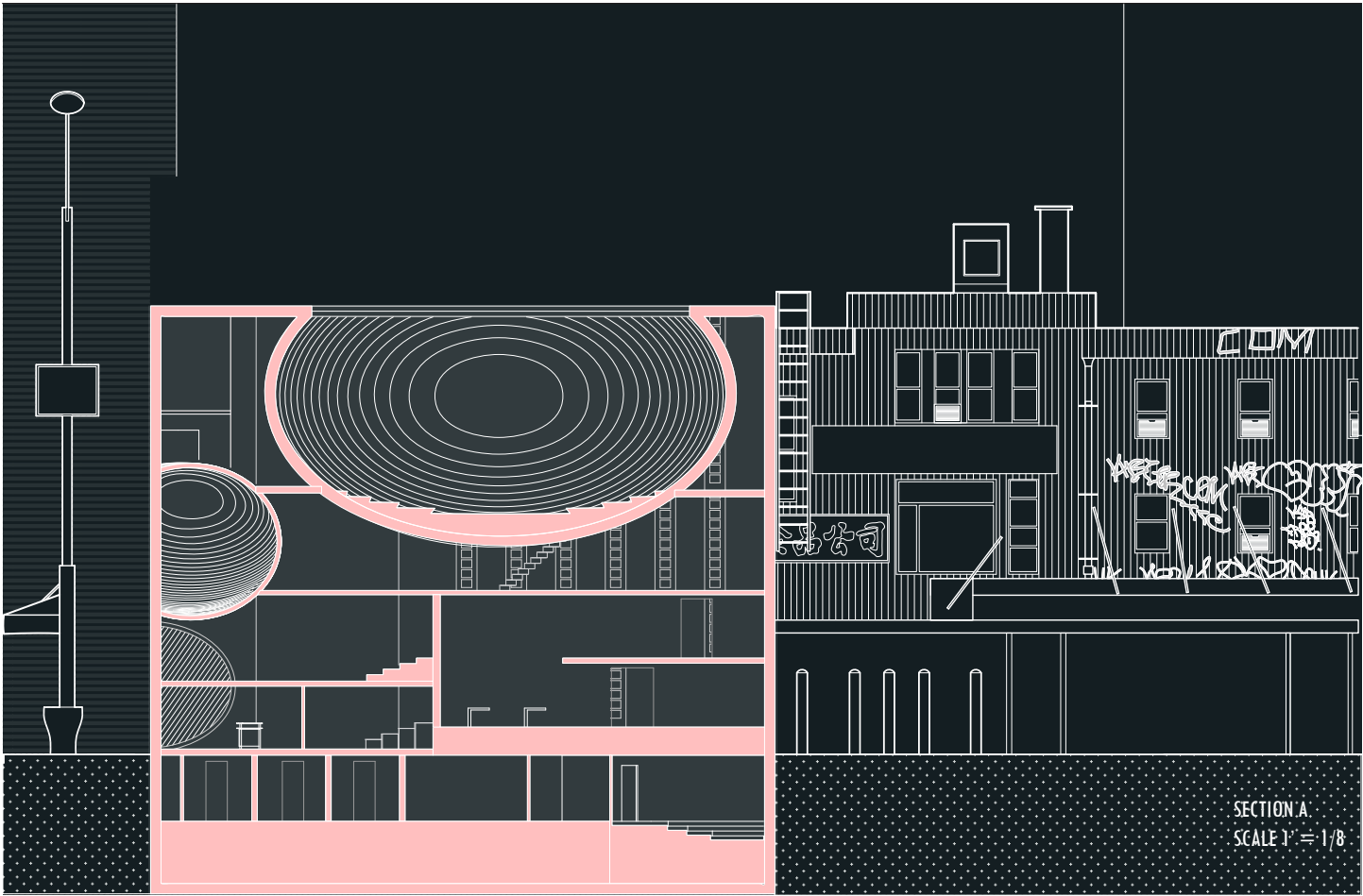




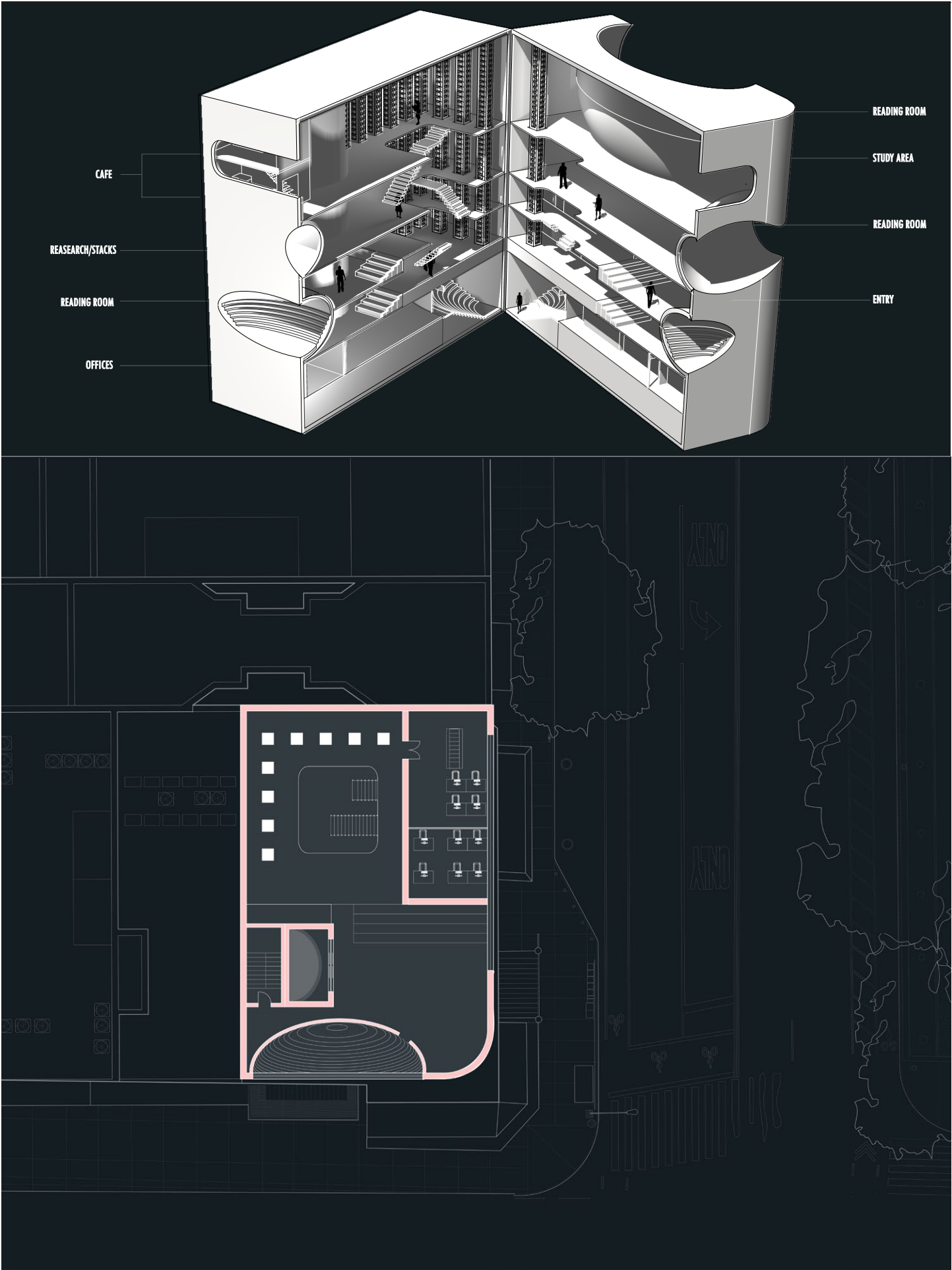
FINAL CONCRETE SECTIONAL MODEL







16 long section, structural axonometric and sun studies.



17 sectional perspective, and plan.



# DEVIANT ANATOMY

**TEAM SIZE:** 1  
**PROGRAM:** architectural narrative  
**STATUS:** unbuilt, completed may 2021  
**TYPE:** interior design: academic project

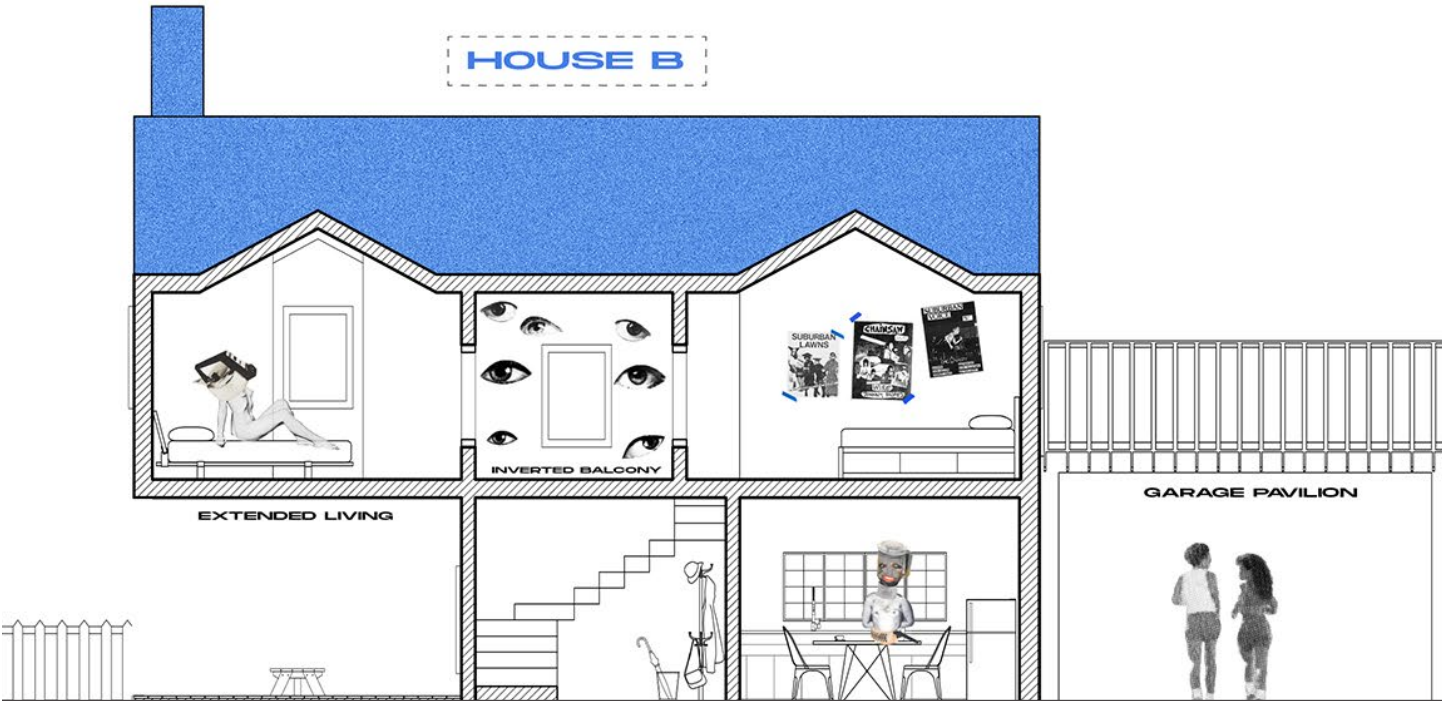
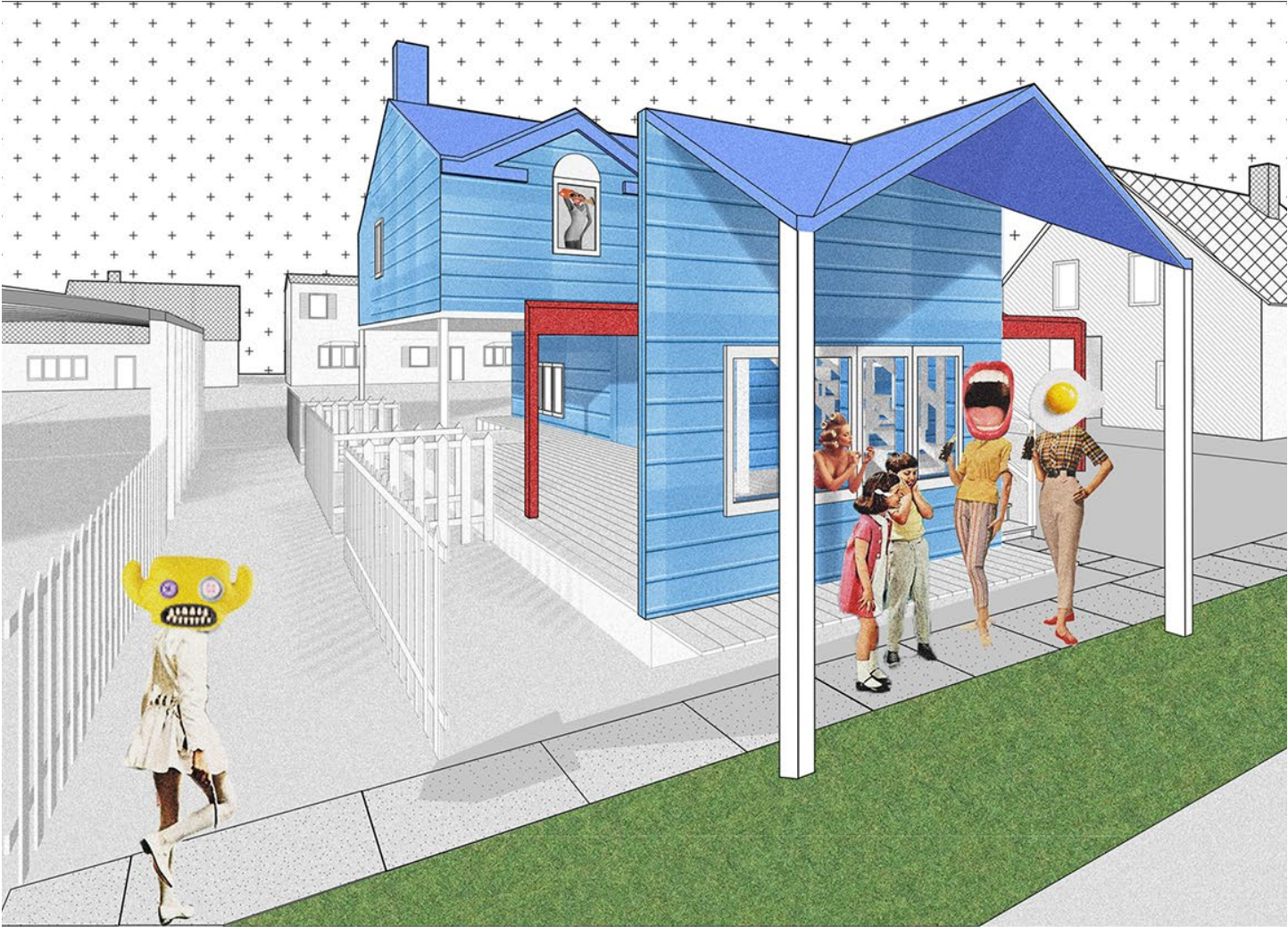
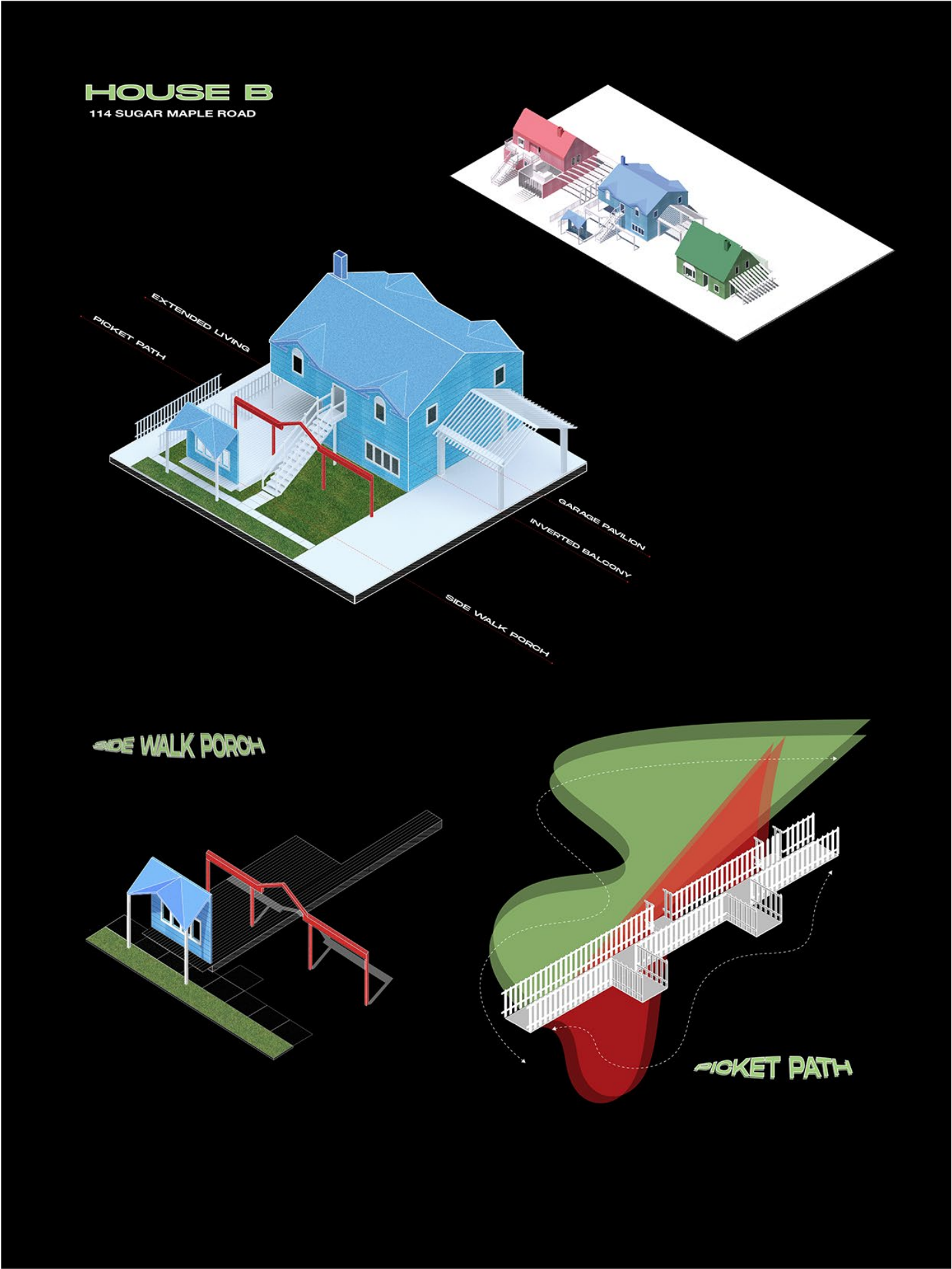
**DESCRIPTION:**  
Deviant Anatomy is a speculative project that challenges the conformity of suburban domesticity by taking the tropes of the suburban landscape and inverting them. Through the unconventional pairing of architectural and programmatic elements, the project explores how spatial design can act as a prop to cultivate new social behaviors.

Set within an existing suburban development, the intervention disrupts conventional patterns by reconfiguring familiar programs, spaces, and elements into unexpected juxtapositions. This reassembly creates an uncanny experience, blurring the boundaries between voyeurism and exhibitionism. By shifting programmatic norms, the design introduces a new network of interactions, encouraging aberrant behavior as a counterpoint to the relentless monotony of suburbia. In this landscape of uniformity, Deviant Anatomy re imagines domestic space as a site of subversion, inviting alternative ways of living and engaging with the built environment.

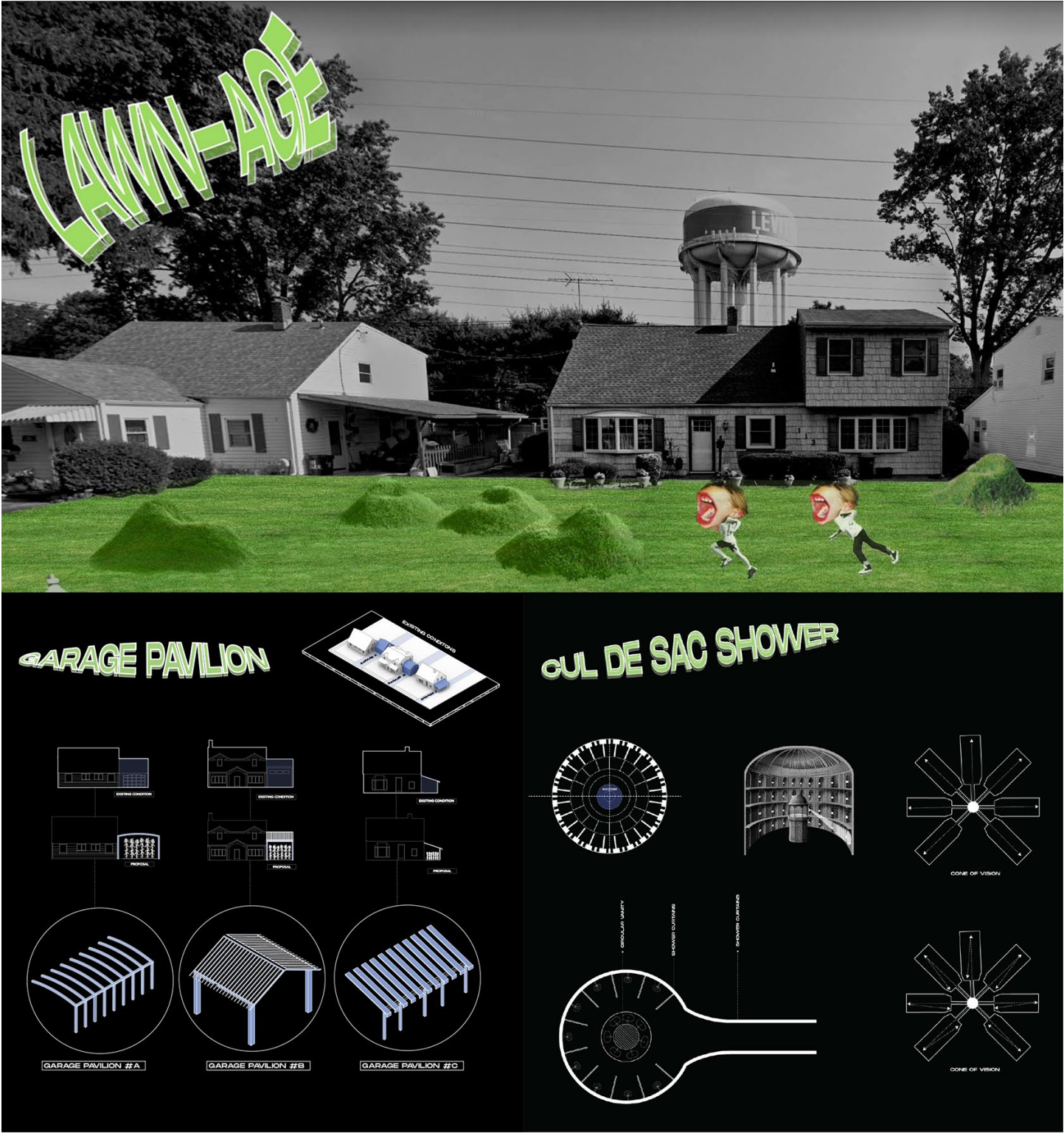
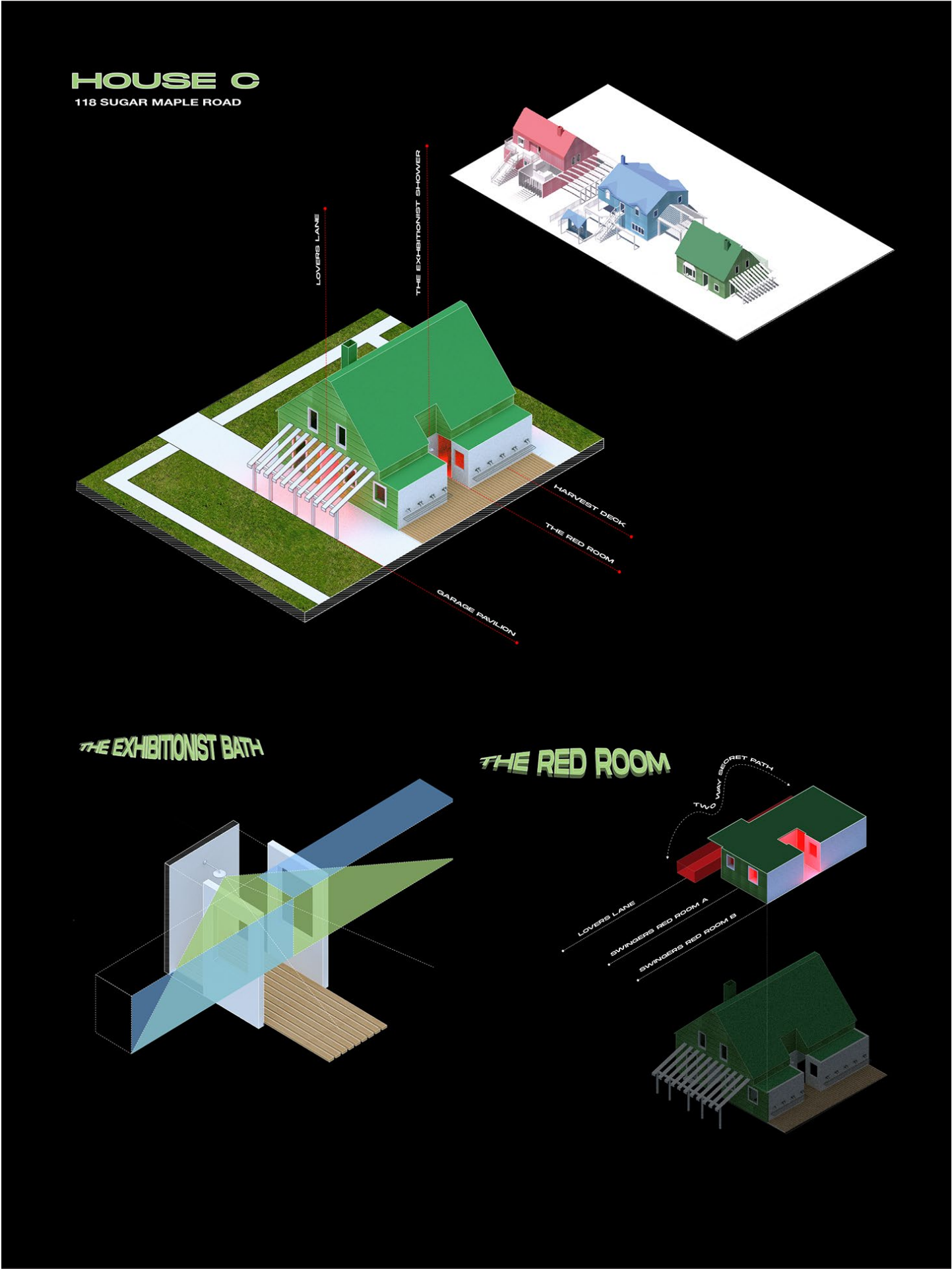
**PERSONAL RESPONSIBILITIES:**  
design concepts & schematic  
design development  
construction drawings  
presentation drawings  
fabrication drawings  
architectural visualization













# SPUNSPRINKLES FACTORY

**TEAM SIZE:** 4  
**PROGRAM:** commercial store + portable cart  
**STATUS:** completed and built, June 2021  
**TYPE:** interior design: professional project  
**STUDIO:** the arch lab

**DESCRIPTION:**  
The Spunsprinkles store, inspired by a sugar factory, weaves the brand identity into an experiential space. Every design element reflects the cotton candy-making process, with semi-circles and arches echoing the spinning machine’s shapes and movements.

At the core of the design is the main counter, incorporating cotton candy-making pods arranged in a circular configuration. This enhances the interactive experience for children while complementing the machines form. The store also hosts children’s events, featuring a small raised stage with an arched logo backdrop that doubles as a photo spot and entertainment hub. Playful geometric forms extend throughout the space, from the custom table designs to the materiality, the design reinforces the brand identity creating a playful and creative space for the occupants.

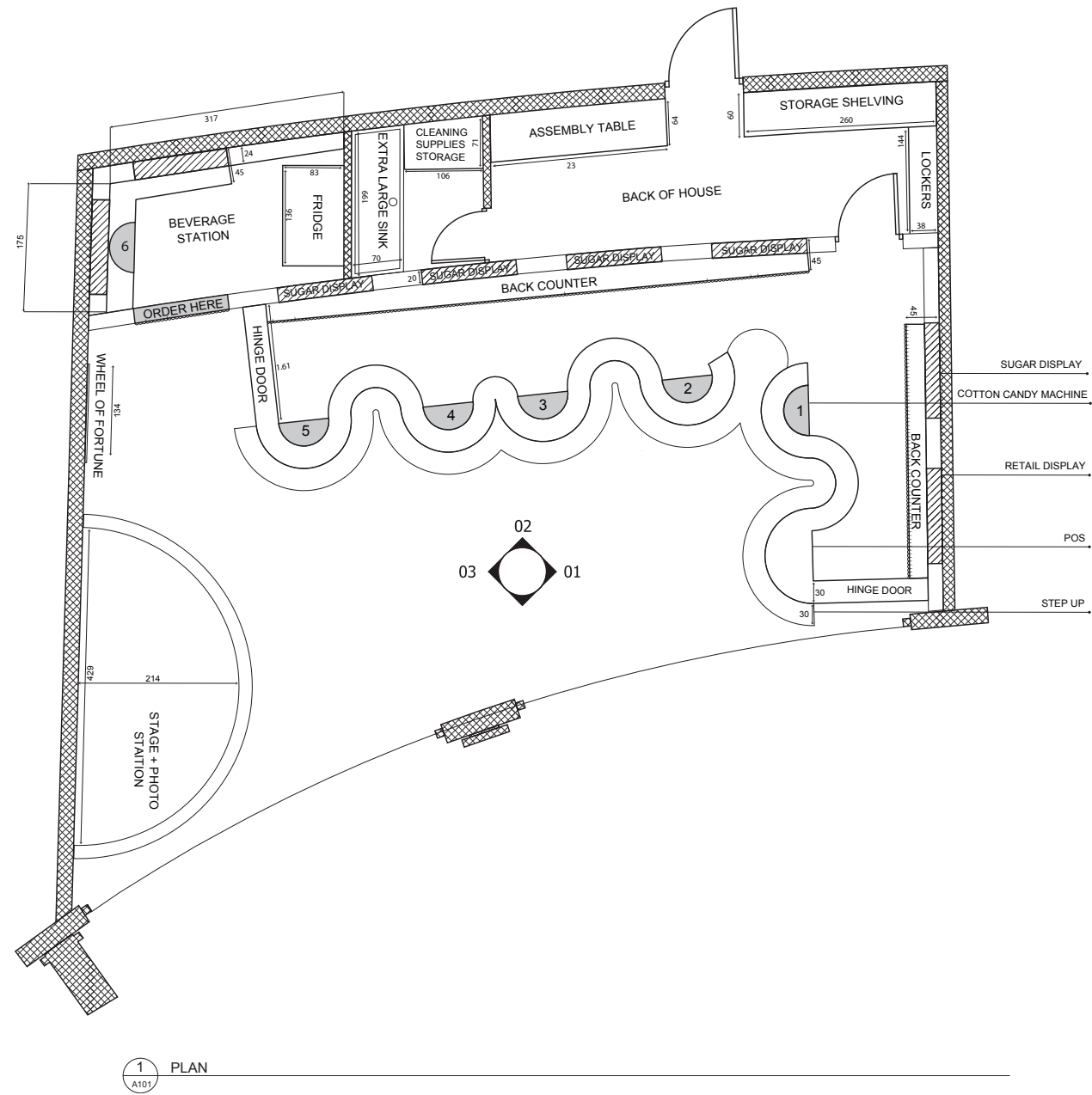
To bring this in-store magic home, the client envisioned a portable station reflecting Spunsprinkles vibrant experience. Using the brand’s material palette, the setup integrates signature blue branding with glossy iridescent accents. Its geometric identity is echoed in elements like an arched logo backdrop and a pill-shaped main counter.

The first cart accommodates two cotton candy machines, while the second is designed for a single machine, ensuring versatility. This project was developed in collaboration with and under the guidance of The Arch Lab team.

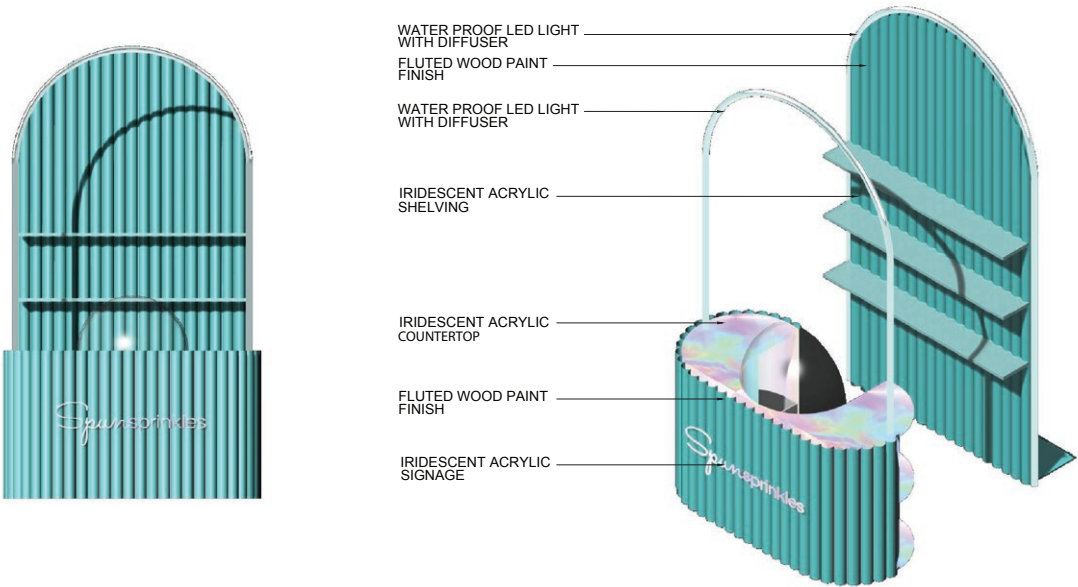
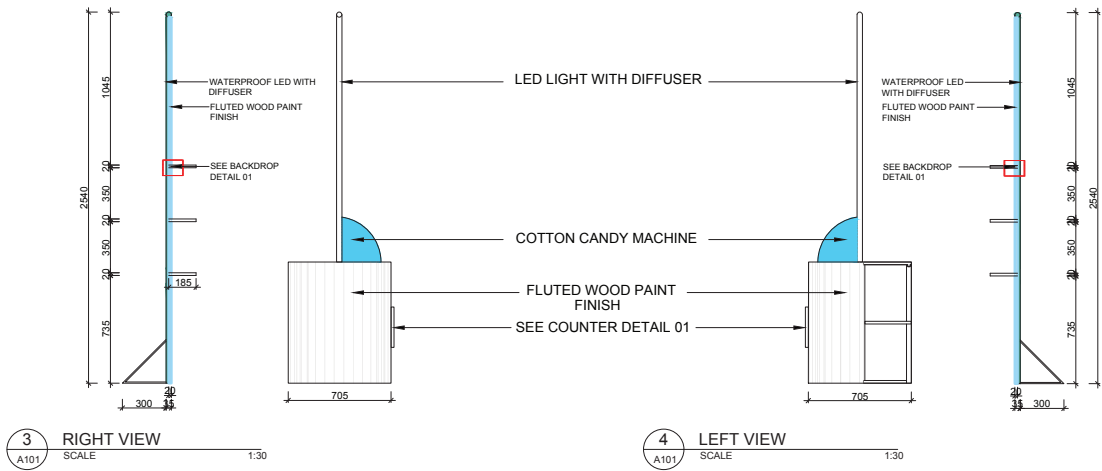
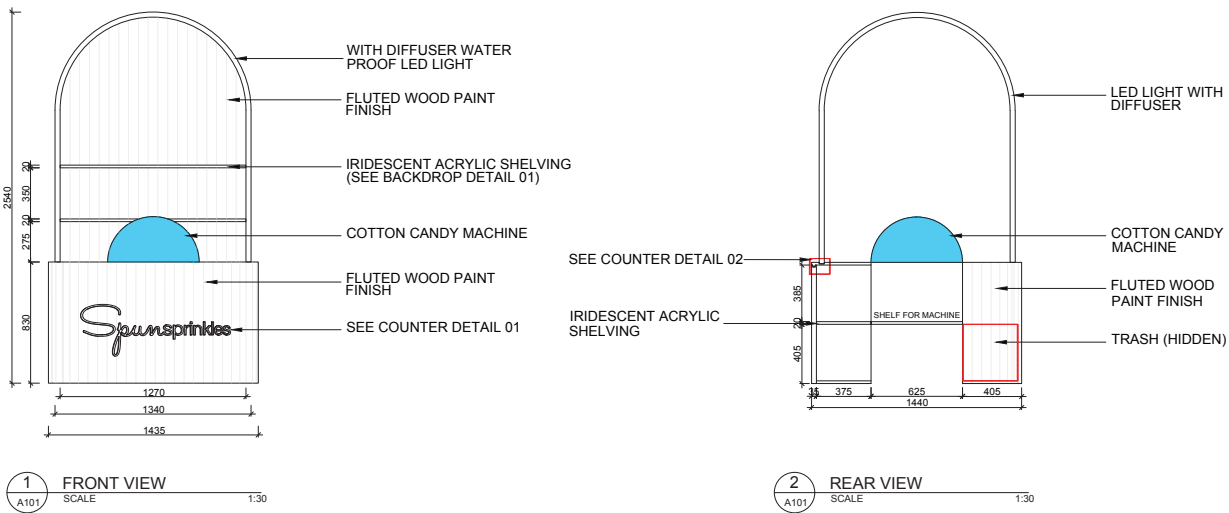
**PERSONAL RESPONSIBILITIES:**  
design concepts & schematic  
design development  
construction drawings  
presentation drawings  
fabrication drawings  
construction administration  
architectural visualization













# MAPLE AND ASH

**TEAM SIZE:** 1  
**PROGRAM:** residential renovation  
**STATUS:** completed, may 2022  
**TYPE:** interior design: professional project

**DESCRIPTION:**  
Maple and Ash, a residential penthouse in the heart of Kuwait City, was a renovation project designed to create a warm, welcoming space. The palette was rich with durable materials for hosting and comfortable furniture for daily use.

The project centered on two areas: a spacious hosting space and an intimate family room. The floor plan was re-organized to foster multiple intimate social nodes. Instead of walls, the hosting space was defined by three seating zones: the bar area, the lounge and an elevated overlook.

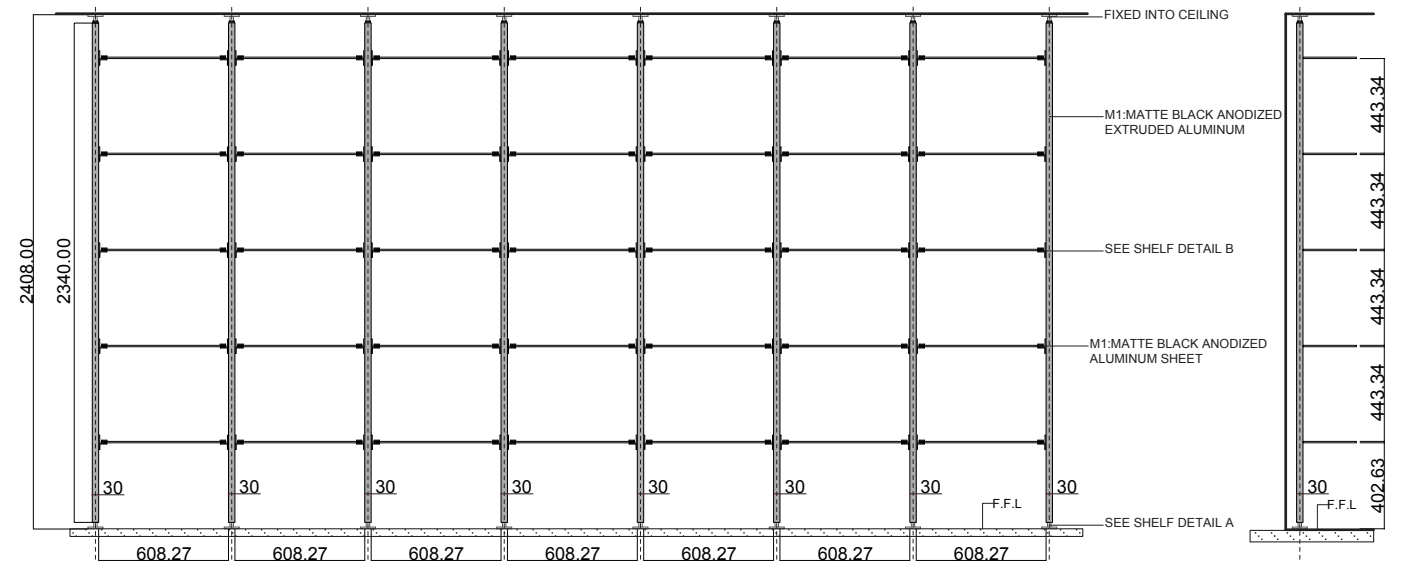
The design prioritized intimate social spaces within an open plan. A custom floor to ceiling metal bookshelf was installed against an existing mirror, becoming a focal point within the space. Opposite the bookshelf, a custom counter top featured a black marble surface with fluted stained oak detailing. The client envisioned subtle influences of the New York hotel bar scene throughout the space.

The smaller family room, The Blue Room, was designed around a built-in TV unit. The main wall was clad in oak paneling, stained a deep blue to define the space.

**PERSONAL RESPONSIBILITIES:**  
design concepts & schematic  
design development  
construction drawings  
presentation drawings  
fabrication drawings  
construction administration  
architectural visualization

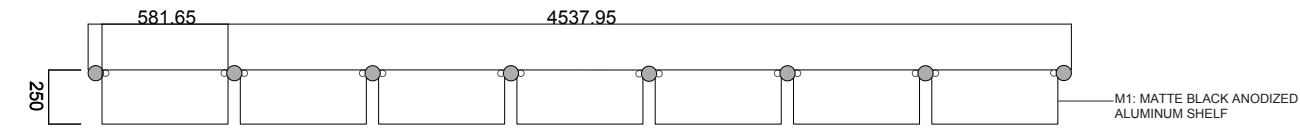




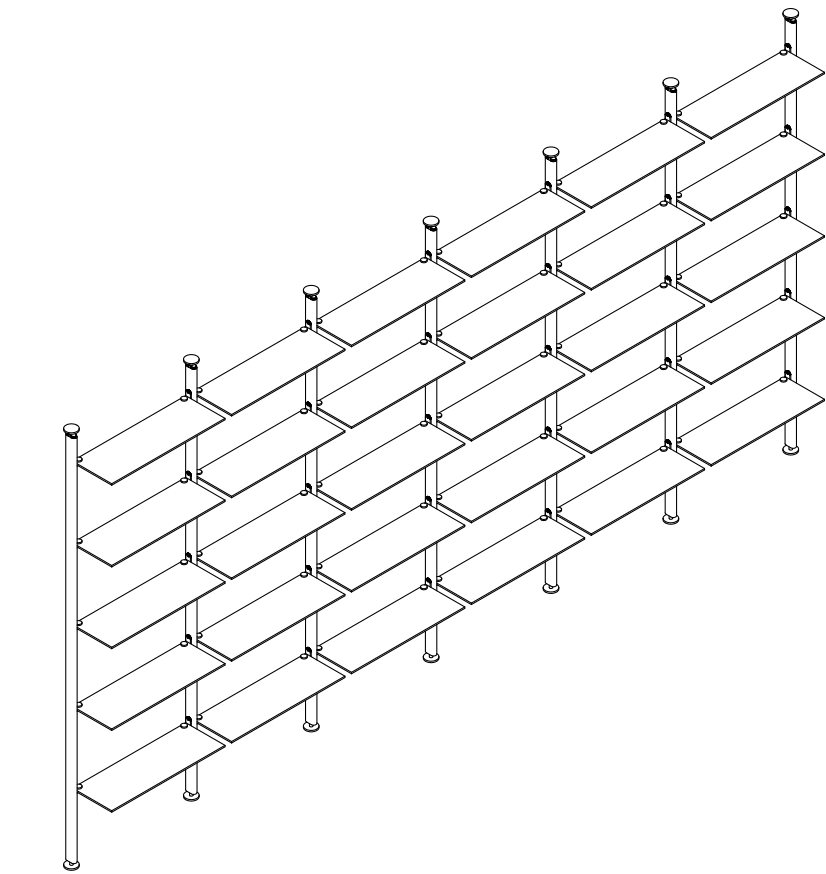


A METAL SHELF ELEVATION

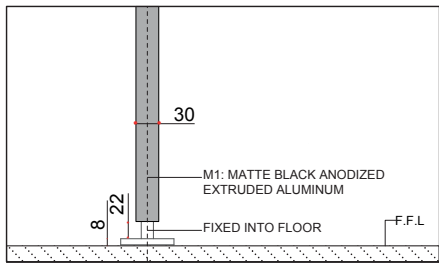
B METAL SHELF SIDE ELEVATION



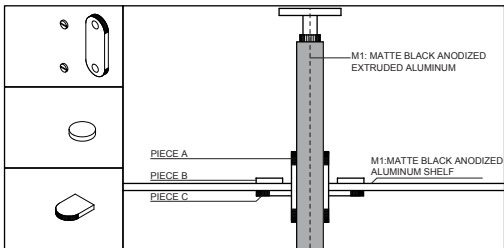
C METAL SHELF PLAN



F METAL SHELF PERSPECTIVE



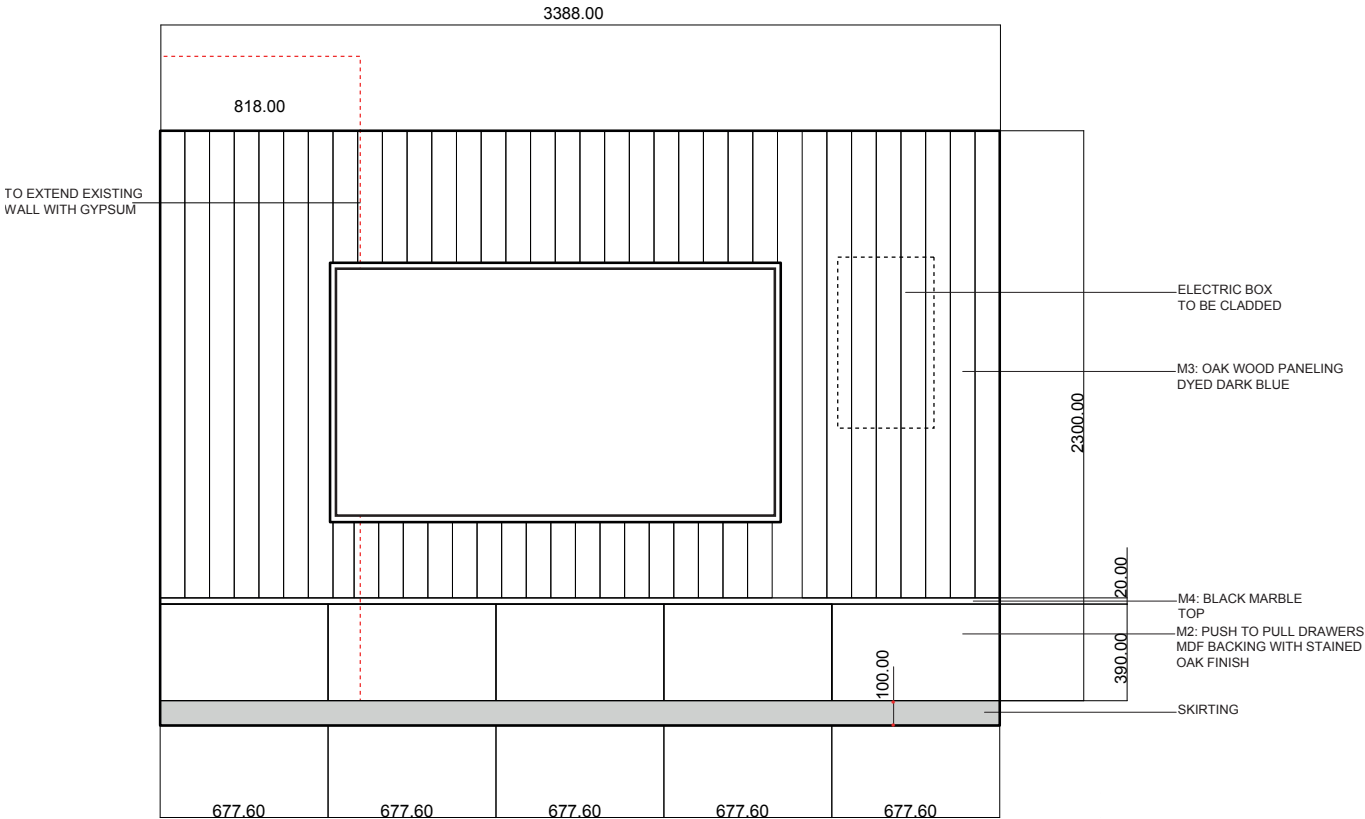
D METAL SHELF DETAIL A



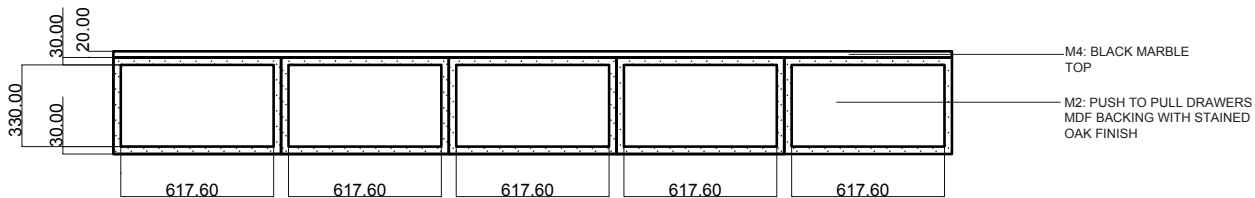
E METAL SHELF DETAIL B







A WALL ELEVATION 01



B DRAWERS SECTION

M3: OAK WOOD PANELING  
DYED DARK BLUE

M4: BLACK MARBLE TOP

M2: PUSH TO PULL DRAWERS  
MDF BACKING WITH STAINED  
OAK FINISH





# ARABIC GRAPHIC DESIGN NEWSPAPER

**TEAM SIZE:** 1  
**PROGRAM:** -  
**STATUS:** printed may 2025, edition of 1000  
**TYPE:** graphics and publications

**DESCRIPTION:**  
8-page Newspaper Publication  
Dimensions: 11.25" × 16.50"  
Paper: 30lb newsprint  
Printed at: Linco Printing, Long Island City, NY

This newspaper is an index within an index. The publication takes A History of Arab Graphic Design by Bahia Shehab and Haytham Nawar—one of the first comprehensive books on Arabic graphic design—as its foundational reference point. By indexing selected chapters and imagery from the book, the project aims to amplify its significance while continuing the broader narrative of excavating Arab archival histories.

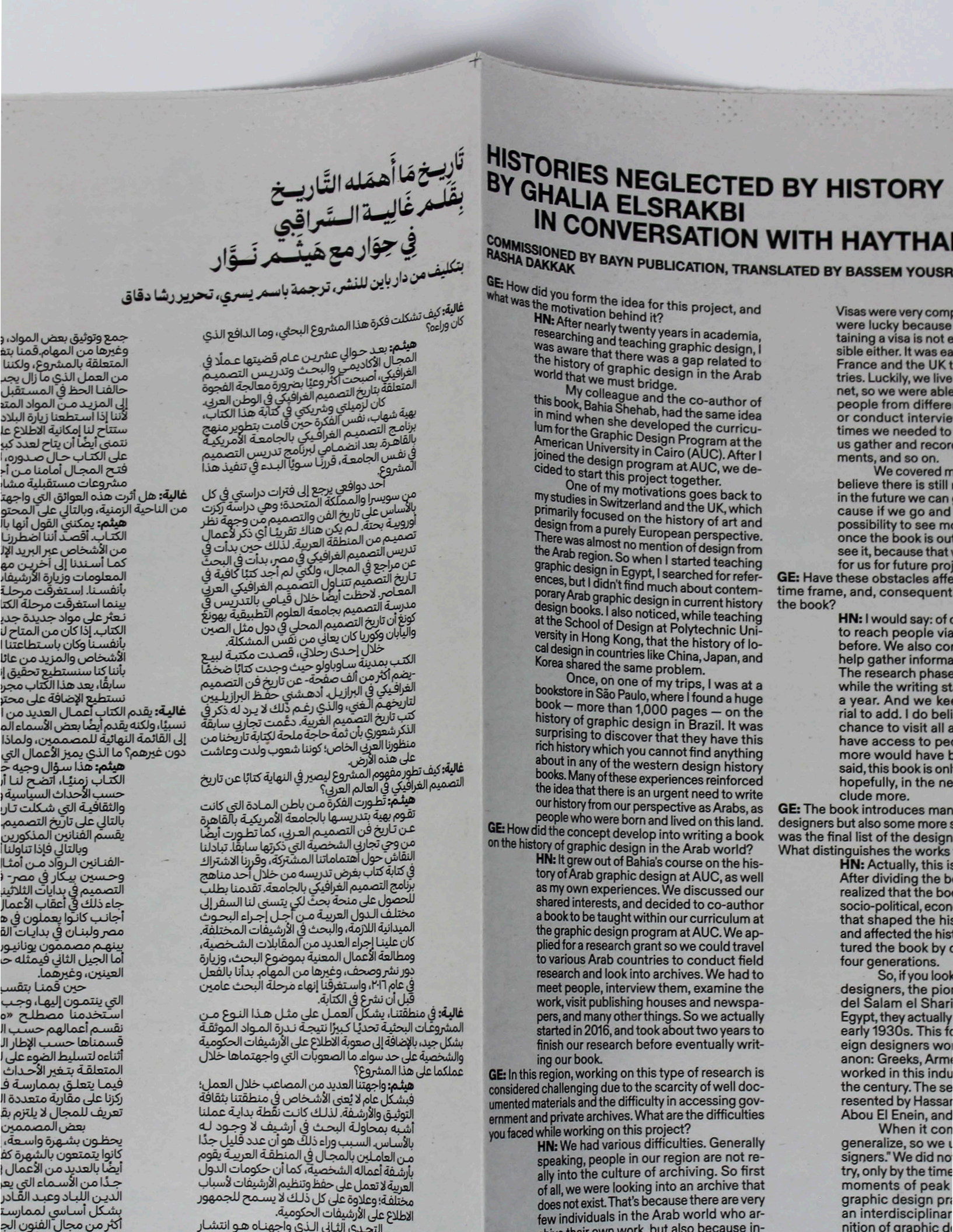
To further contextualize the book and its development, the newspaper includes Histories Neglected by History, an interview between Ghalia Eskrabi and Haytham Nawar. In this conversation, Nawar reflects on the book's conception, the research methodology behind it, and the frameworks the authors employed to shape its narrative.

Bridging past and present, the publication also features a directory of contemporary Arab-based type foundries, each accompanied by a featured typeface. This component serves both as a practical resource and as a platform to promote ongoing typographic innovation across the region.

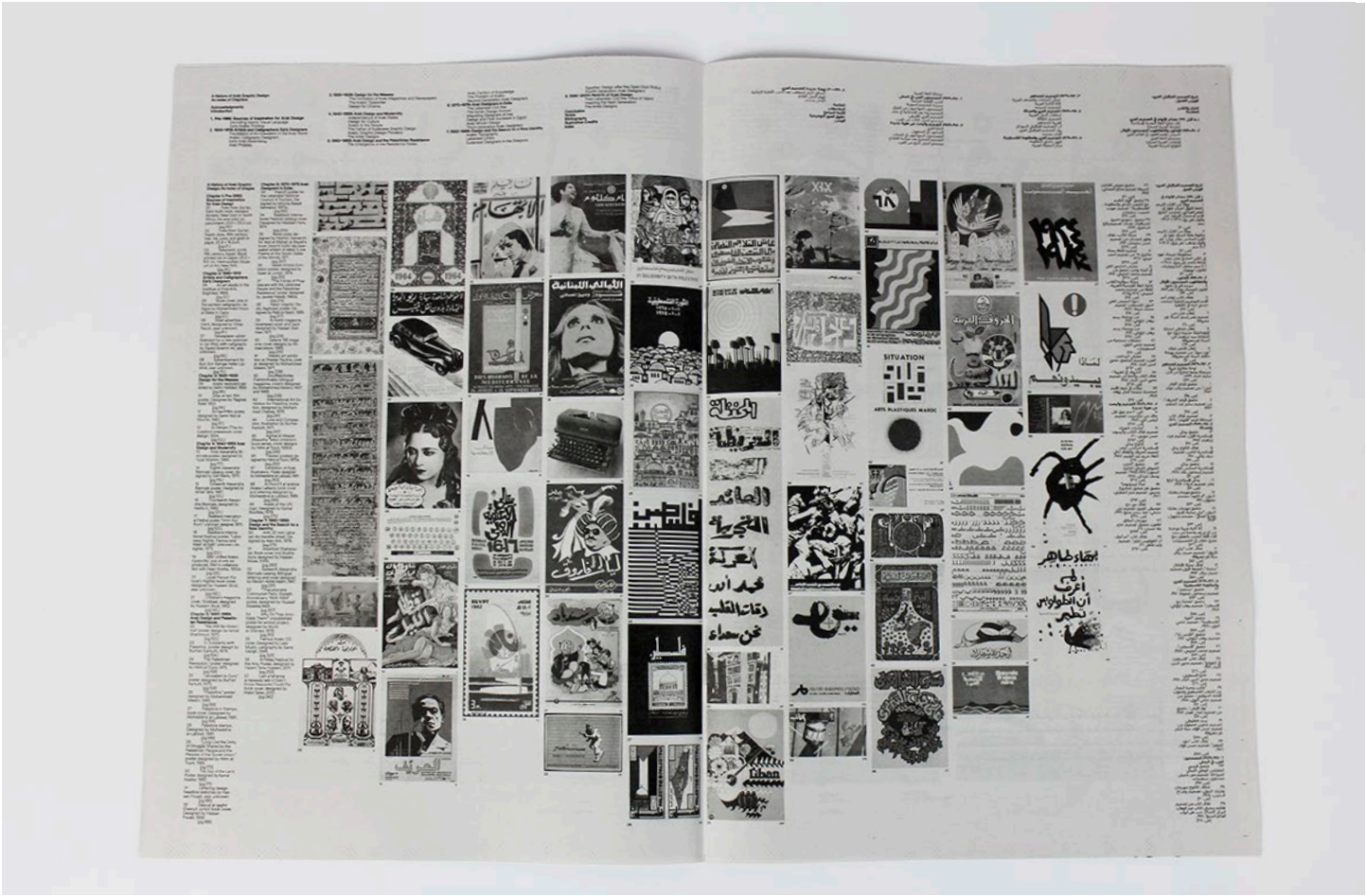
Presented in both Arabic and English, the publication reflects a dual commitment to cultural specificity and accessibility. It stands as a design artifact that invites continued engagement with the overlooked, fragmented, and evolving histories of Arab graphic design.

**PERSONAL RESPONSIBILITIES:**  
research  
design concepts & schematic  
design development  
typography & layout  
type setting

10









# A EULOGY TO KUWAIT'S FORGOTTEN MODERNITY

**TEAM SIZE:** 1  
**PROGRAM:** architectural narrative  
**STATUS:** printed may 2024, edition of 50  
**TYPE:** graphics and publications

**DESCRIPTION:**  
This eulogy commemorates Kuwait's golden era of modernization (1940s–1980s), a period marked by rapid transformation and cultural growth following the oil discovery. It honors modernist structures as symbols of national ambition, identity, and optimism. As these landmarks face demolition, the eulogy mourns the loss of collective memory and heritage, urging recognition of this visionary era as foundational to Kuwait's modern identity—one that must be remembered and preserved, not erased.

**PERSONAL RESPONSIBILITIES:**  
archival research  
design concepts & schematic  
design development  
typography & layout  
production & risograph printing  
type setting









# UM KALTHOOM

**TEAM SIZE:** 1  
**PROGRAM:** branding  
**STATUS:** printed  
**TYPE:** graphics and publications

**DESCRIPTION:**  
This project is centered around typography, exploring expressive, experimental, and structured type treatments that capture the essence of a selected album's sound, mood, and concept. I chose to focus on the Egyptian artist Um Kalthoom, considering her influential role in both music and politics, particularly her connection to President Gamal Abdel Nasser and the promotion of Pan-Arabism.

The design of the LP and accompanying publication prioritizes Arabic typography over English, reinforcing a cultural and linguistic hierarchy. By experimenting with scale and layout, I emphasized Arabic type significantly, while minimizing the presence of English text. The LP cover features manipulated calligraphic Arabic lettering that folds across the front and back, obscuring Um Kalthoom's full name until the album is opened. This approach transforms the bold, black Arabic letter forms into abstract symbols rather than immediately legible words, creating a layered reading experience that echoes the depth and significance of her legacy.

**PERSONAL RESPONSIBILITIES:**  
research  
design concepts & schematic  
design development  
typography & layout  
production & printing  
typesetting





