



PRABAL GURUNG

F/W 2026

RHEA ECKENROD

SPRING 2025

TXA 353D

Est. in 2009 as a Women's luxury RTW, Prabal Gurung is celebrated for its bold, modern femininity and socially conscious approach to fashion. With a deep appreciation for craftsmanship and storytelling, the brand seamlessly blends strength and sensuality, structure and fluidity, tradition and innovation. His contemporary design style is heavily influenced by his Nepalese heritage and passion for female representation.

F/W 2023



Draping

S/S 2024



Contrast

F/W 2024



Vivid

Trend Analysis for 2026

# Inclusion/Diversity

Strength in femininity

Minority Representation

Designs to evoke confidence



S/S 13

F/W 13

S/S 13

S/S 13



**Age/Gender :** 30-45, Women

**Nationality:** American

**Occupation:** Upper Management

**Hobbies/Interest:** hosting intimate dinner parties, pilates, contemporary art, rediscovering her love of female

### Style Preferences:

Tailored yet fluid silhouettes

Luxe fabrics: Silk, Jacquard, crisp cottons, the thinnest chiffon

### Functionality

Statement pieces that do not sacrifice personality

Versatility (Office to Networking Dinner)

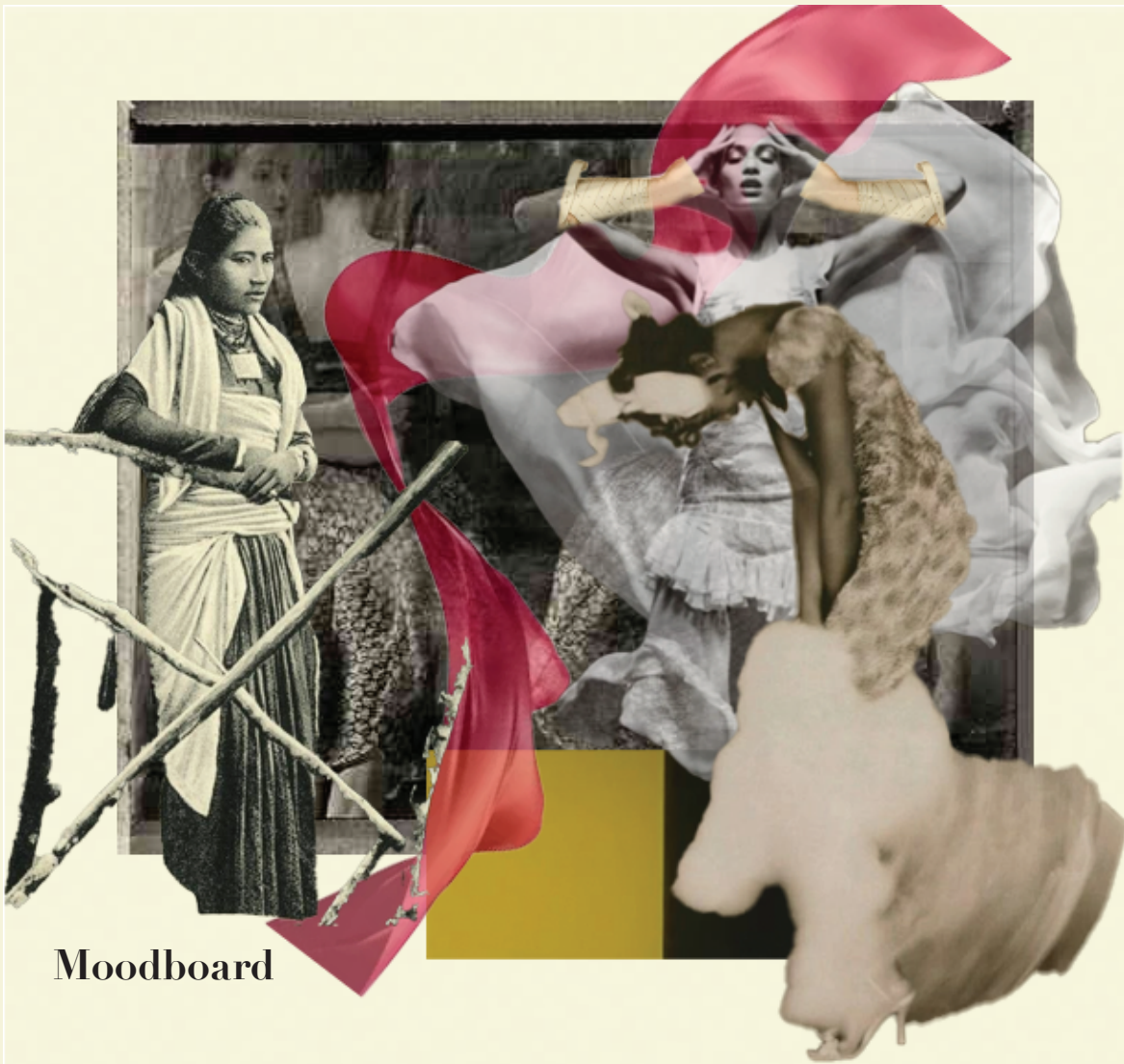
### Marketability

Is not dictated by “trends”

Fashion as a form of self-expression

## Meet Isabella Carter...



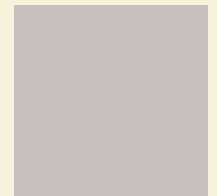
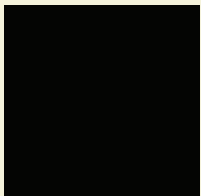


Moodboard



### Concept Note :

An exploration of the ethereal movement of sheer fabric as a metaphor for the mysticism and fluidity of Asian American identity both seen and obscured, present yet elusive. Victorian bandage diagrams further shape this narrative, evoking ideas of restraint, structure, and the concealment of self, especially within the rigid expectations of the “working” woman. The tension between transparency and containment reflects the quiet strength and complexity of navigating identity within an Occidental framework.







Chloe FW 2024

Prada SS 2024



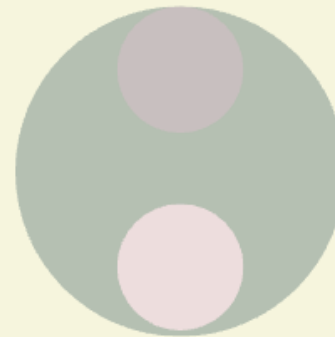
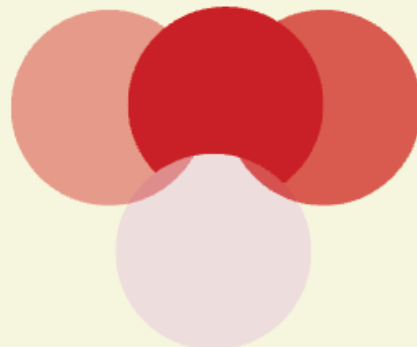
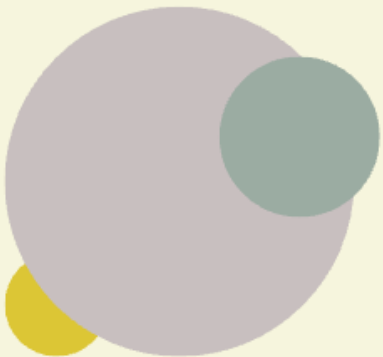
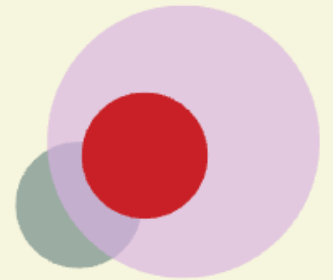
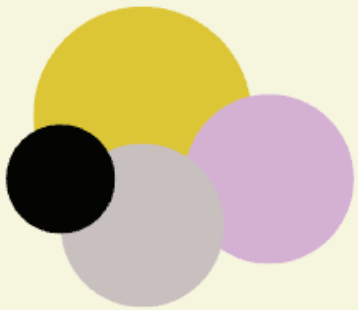
Alberta Ferretti FW 2025

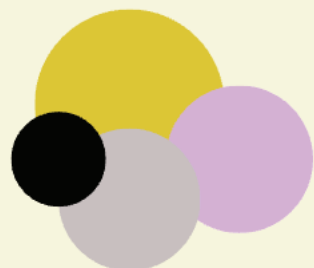
# Sheer Delight

Delicate, sheer fabrics like Tulle, Mesh, & Chiffon enveloping the body in fluid drape

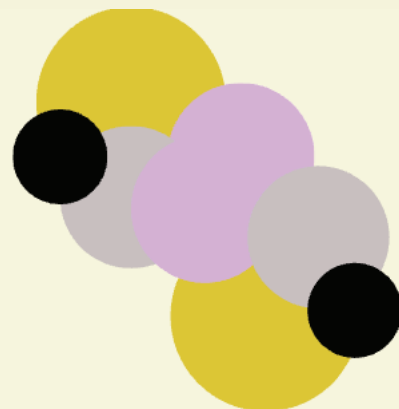
# Silhouette at its most simple form

Sketching without a human body

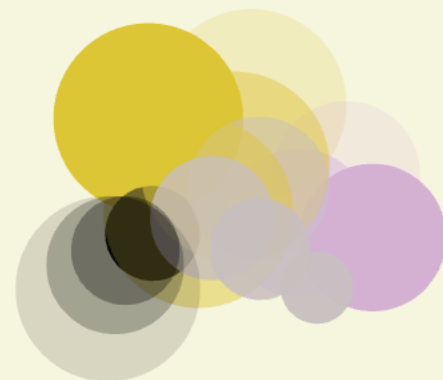
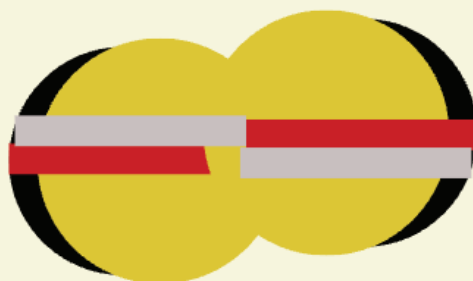




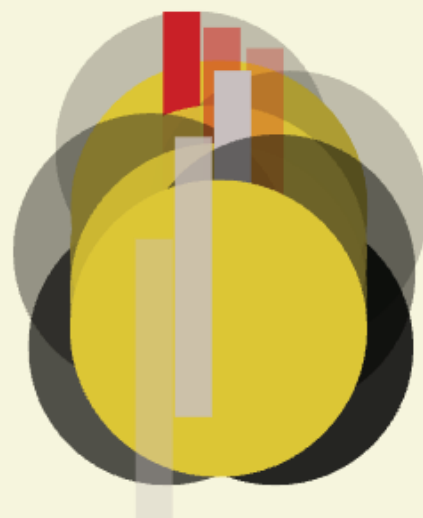
2D



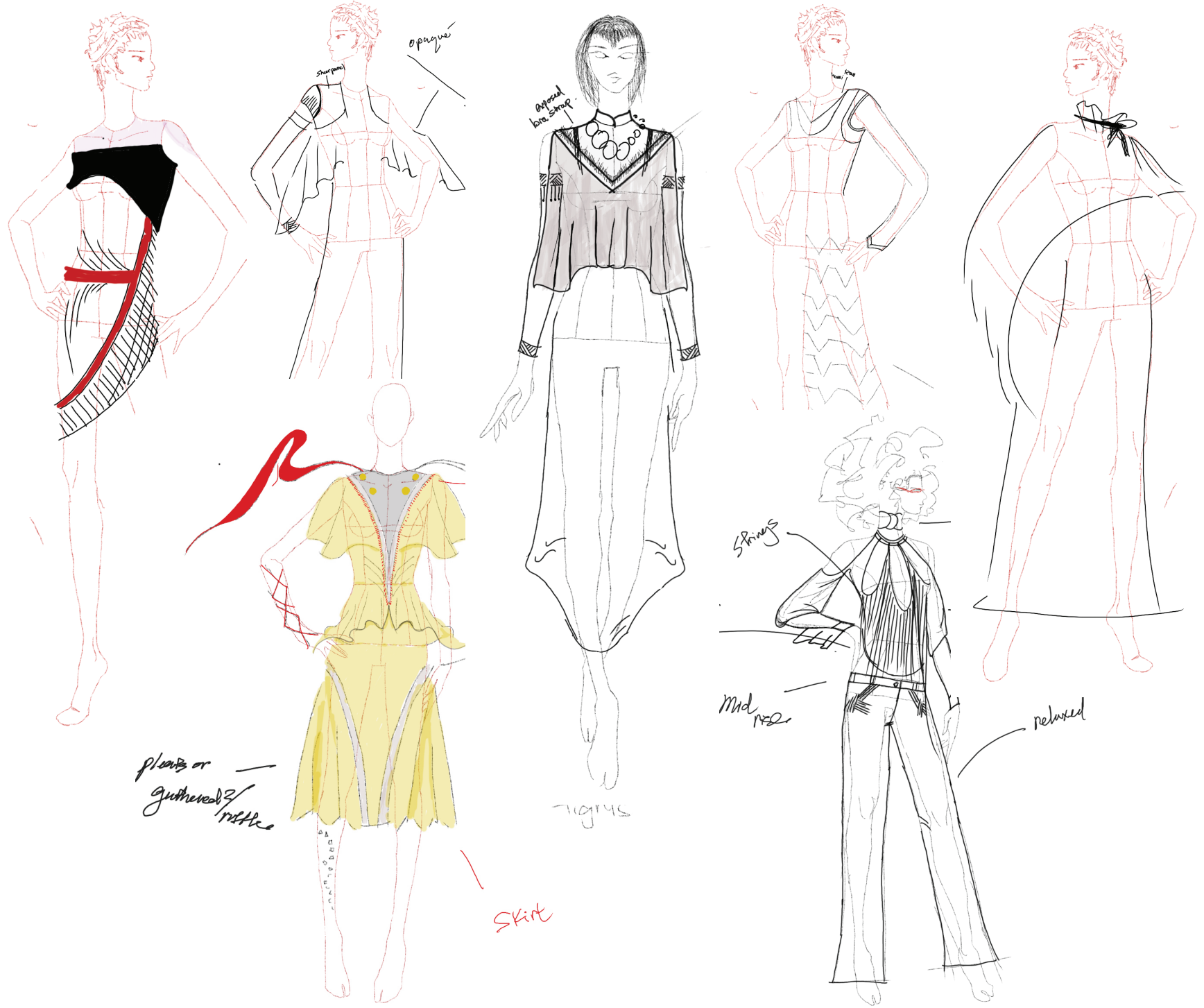
3D

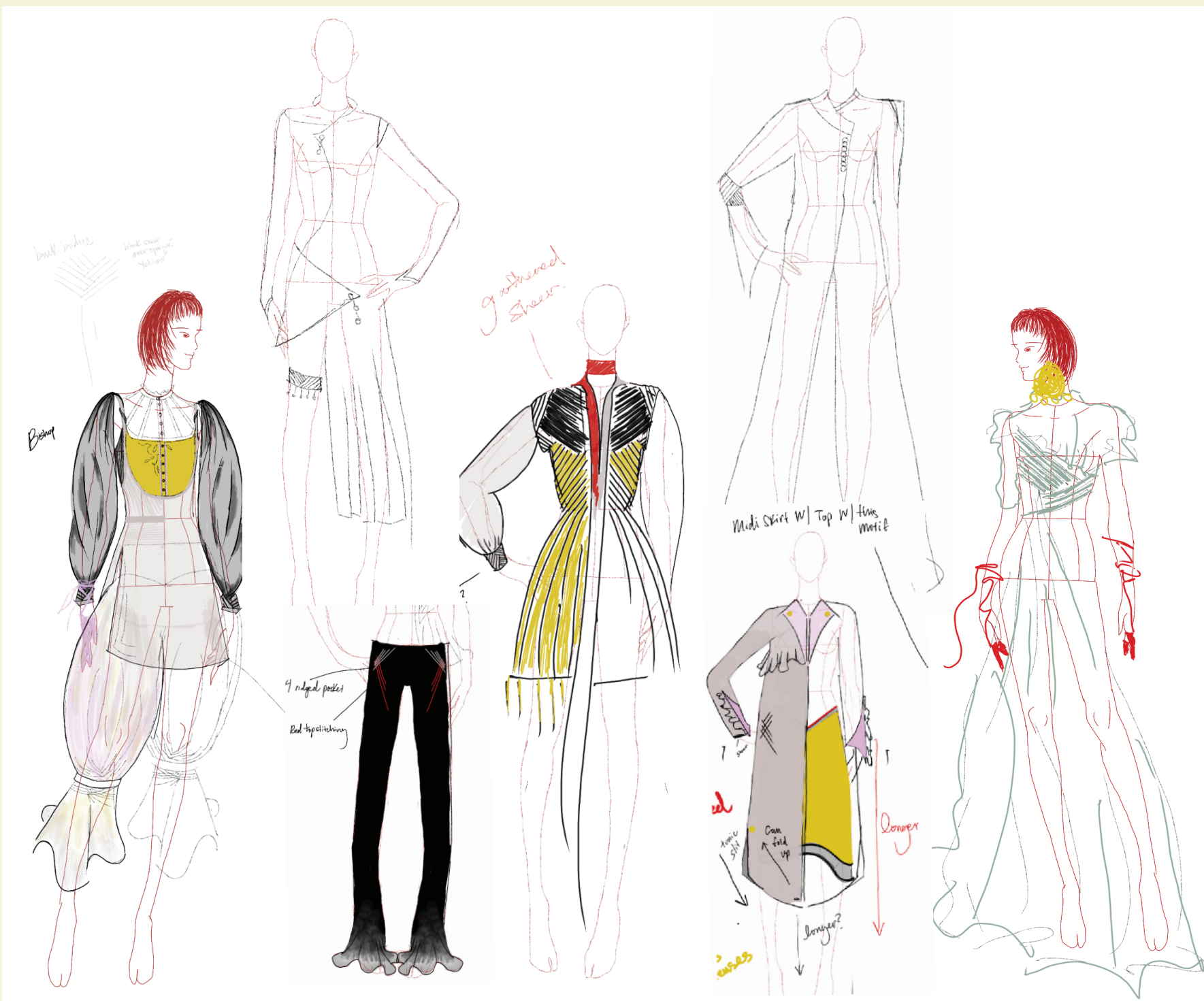


4D









Fabric & Trims



**PANTONE®**  
19-4007 TCX  
Anthracite



**PANTONE®**  
19-1763 TCX  
Racing Red



**PANTONE®**  
14-3610 TCX  
Violet Dusk



**PANTONE®**  
13-0640 TCX  
Acacia



**PANTONE®**  
16-4402 TCX  
Drizzle

Brass 21mm  
Buttons



Chartreuse  
Fringe Trim

*Black Silk Georgette*

*Black Wool Crepe*

*Red Silk Georgette*

*Red Silk Velvet*

*Purple Silk Georgette*

*Purple Wool Crepe*

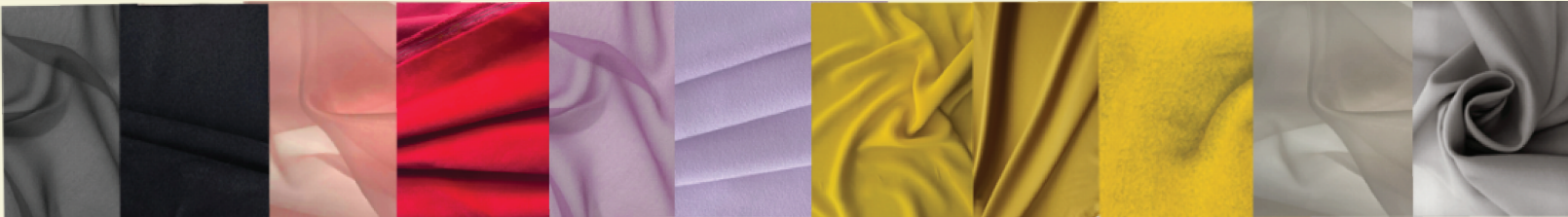
*Chartreuse Silk Crepe*

*Chartreuse Cotton Sateen*

*Chartruese Boiled Wool*

*Grey Silk Georgette*

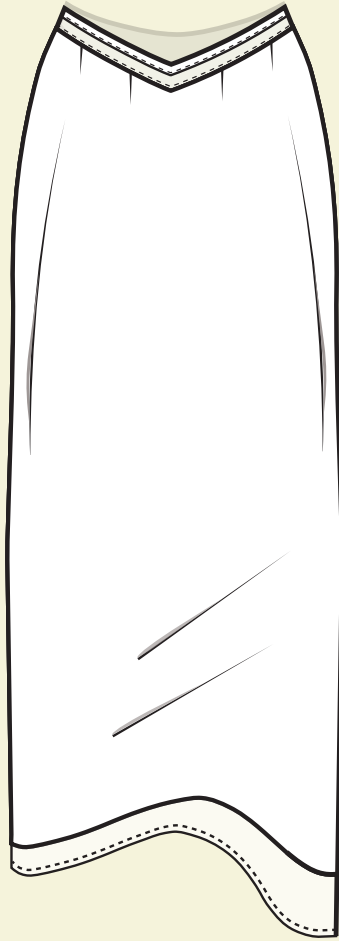
*Grey Wool Gaberdine*



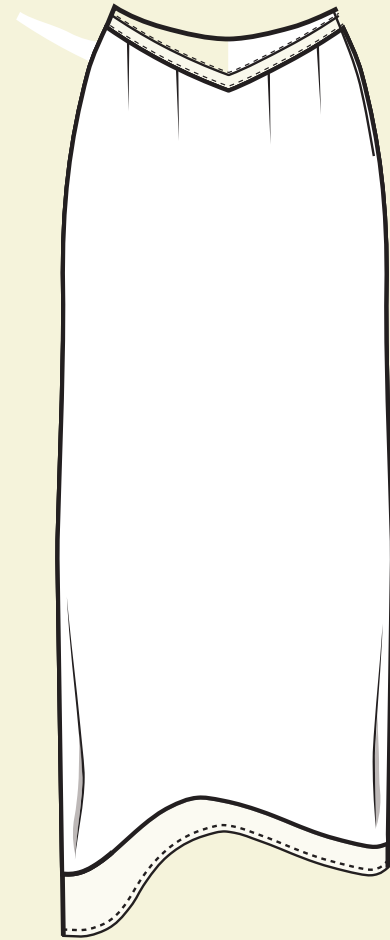




## Look 1

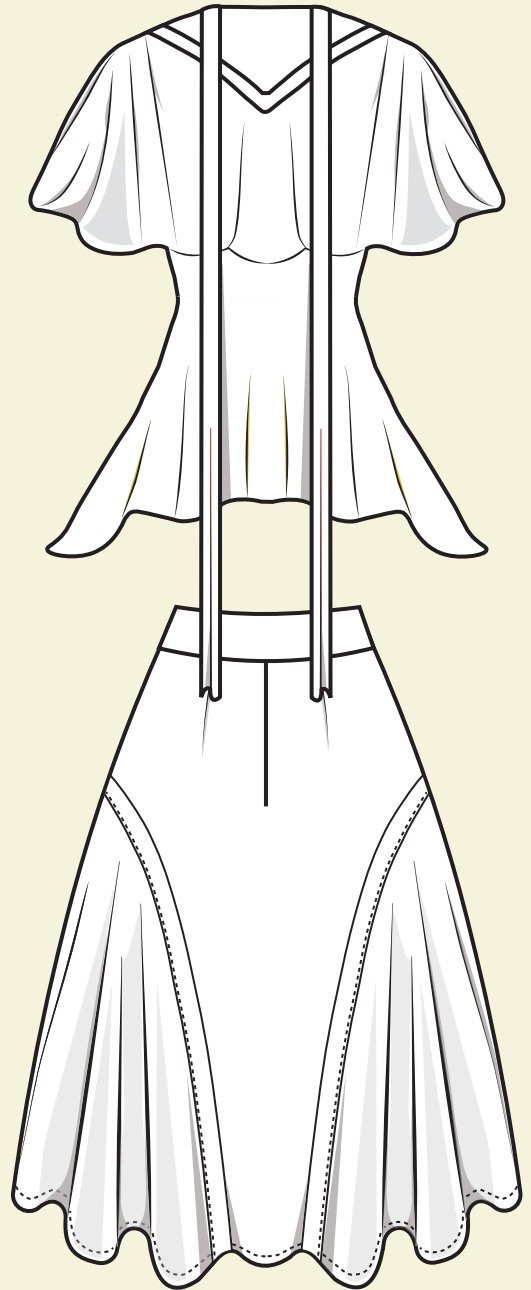
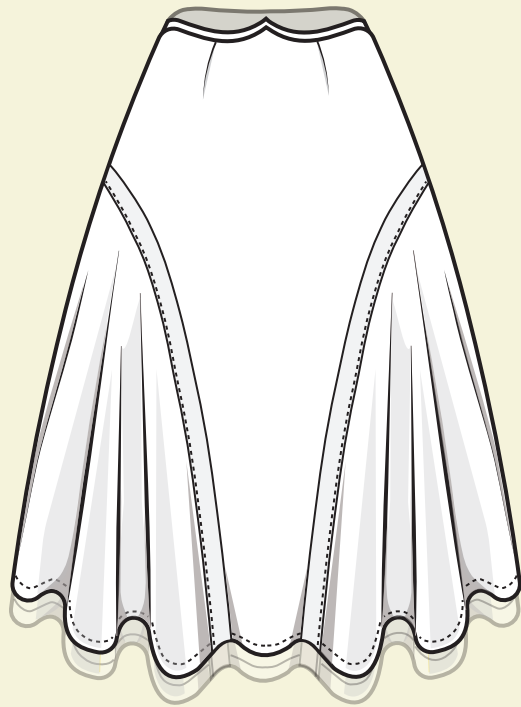
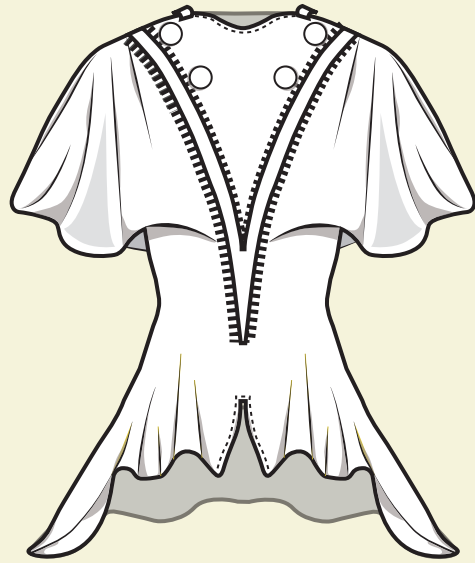


Fabric: Lightweight  
boiled wool , silk chiffon





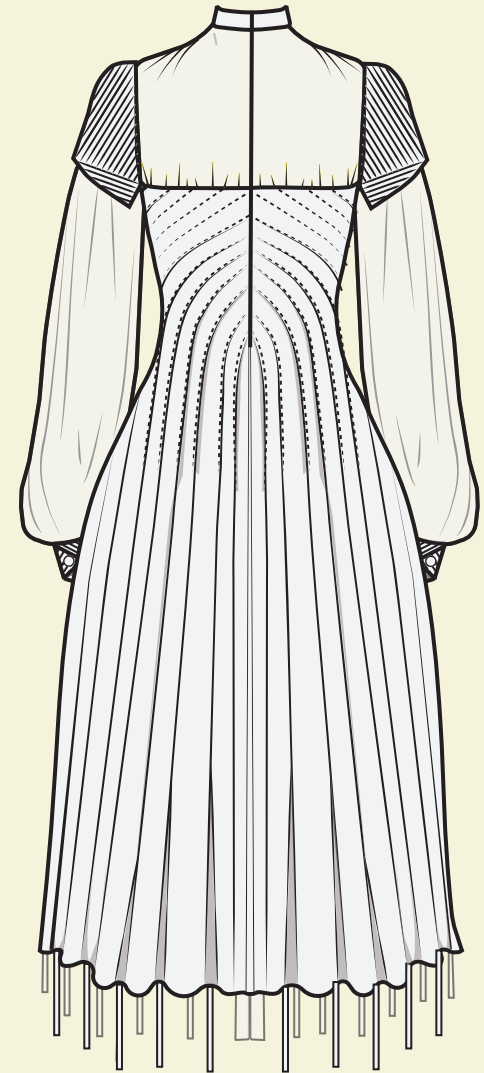
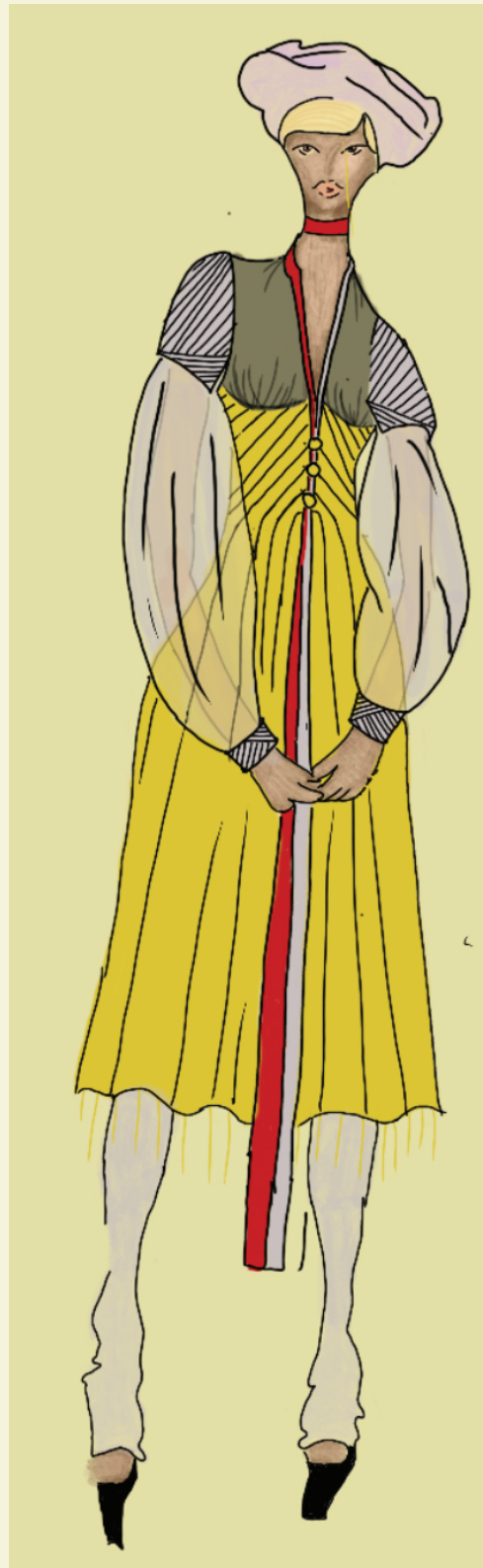
Look 2



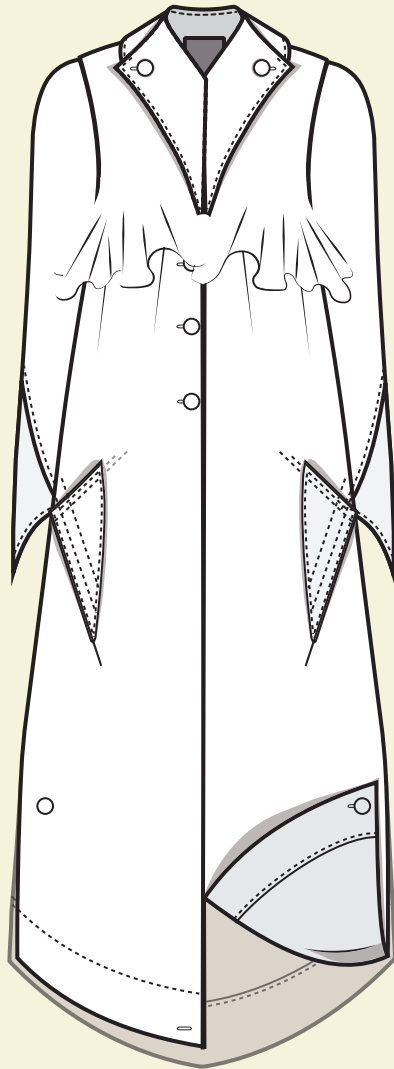
Fabric: Cotton Sateen, Silk Chiffon,  
Silk Crepe



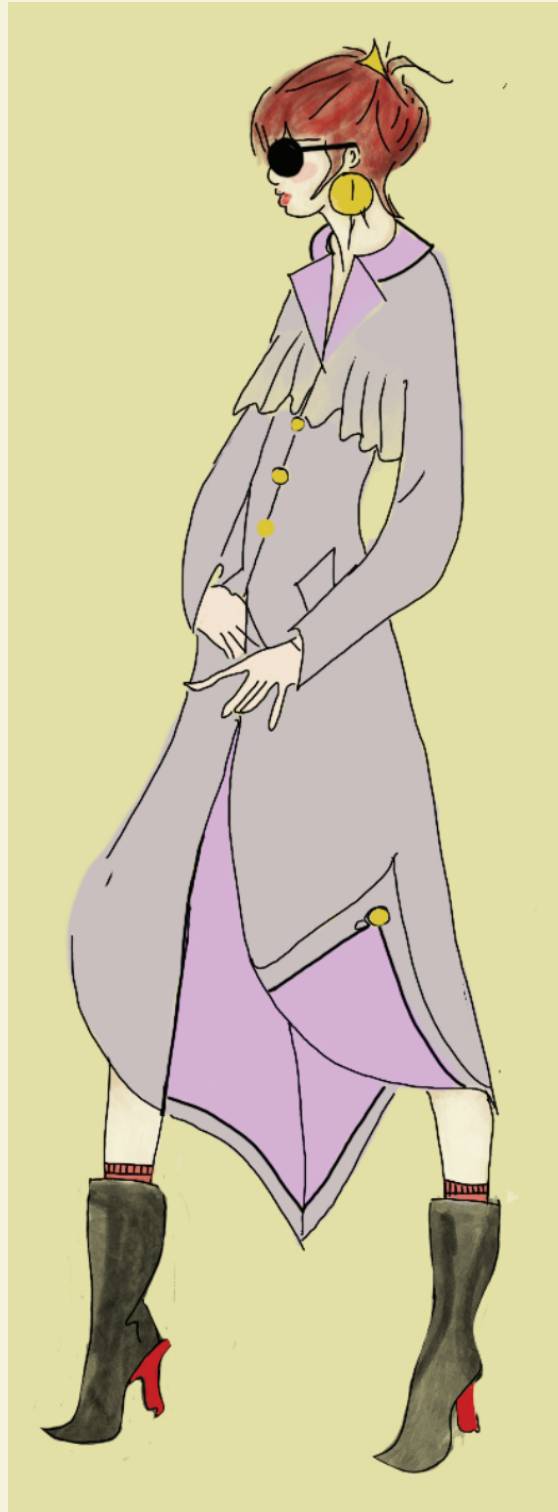
Fabric: Cotton Sateen, Silk Crepe,  
Silk Chiffon



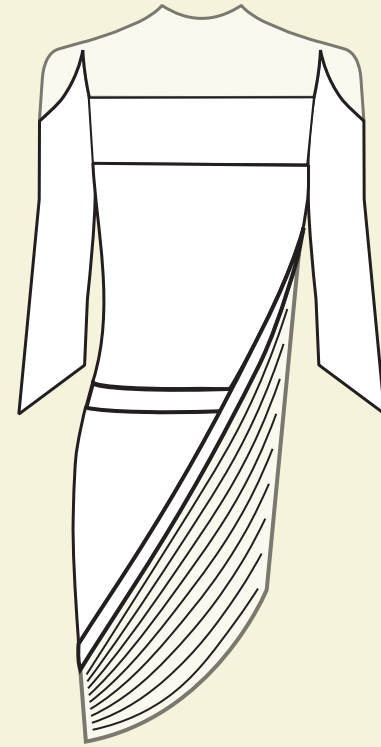
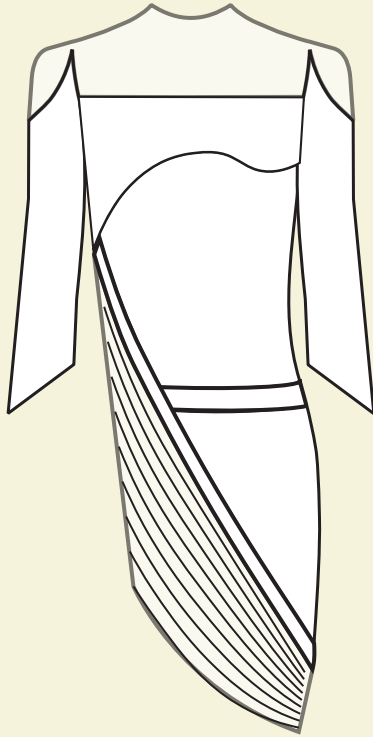
Look 4



Fabric: Wool Gabardine, Mousseline  
Silk, Wool Crepe

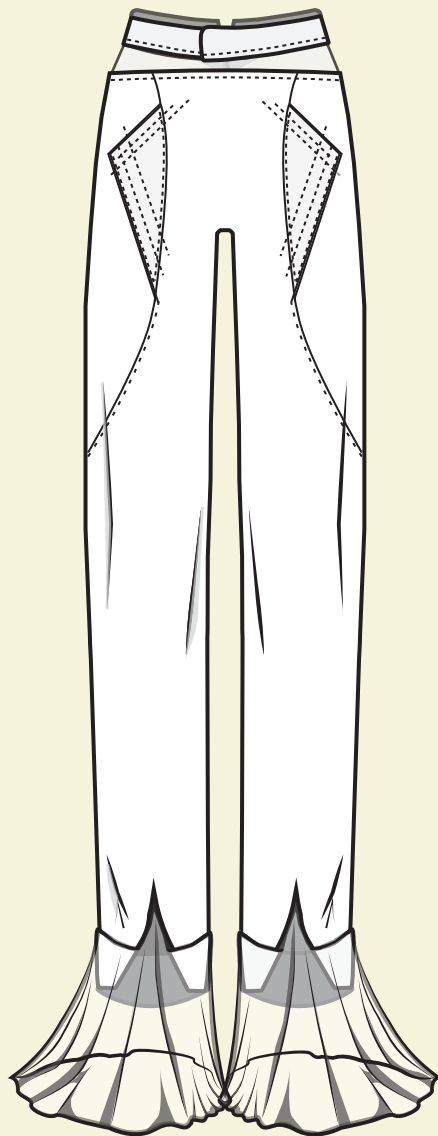


Look 5



Fabric: Wool Crepe, Silk Chiffon, Silk Velvet

Look 5



Fabric: Wool Crepe, Silk Georgette,  
Silk Chiffon

