

Dually inspired
by the women
in the movies
Buffalo '66 and
Blade Runner,
"Sensualité" ex-
plores the role
of femininity in
the confines of
sexism and mi-
sogyny, and the
survivalistic
sensual experi-
ence created and
given by wom-
en in mascu-
line spaces...



A woman's corporeal experience meets harsh negotiation with her perceived identity in a male dominated society. The sexualization of her body forces her recognition and response. In this collection I am exploring the experience of a woman isolated to her innately feminine qualities as means expressing power.

Men have not traditionally seen emotional recognition as powerful, where women have long known its merit. Women's presence creates spaces filled with emotional earnesty, caring gently for others, and honoring the innocent truths and intentions within when interacting with the world. While masculine power is related to control, this divinely feminine type of power lies in everyone and if abundant, brings happiness, health, success and all that makes life worthwhile.

In a male dominated society, where womens' bodies negotiate their identities for them, women can respond by negotiating the recognition of this vulnerability we all share, bringing themselves from essence to honor.

JUXTAPOSING
SOFT + HARD



FEMININE

+

MASCULINE

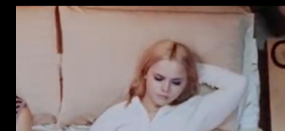


CARE +

DOMINATION



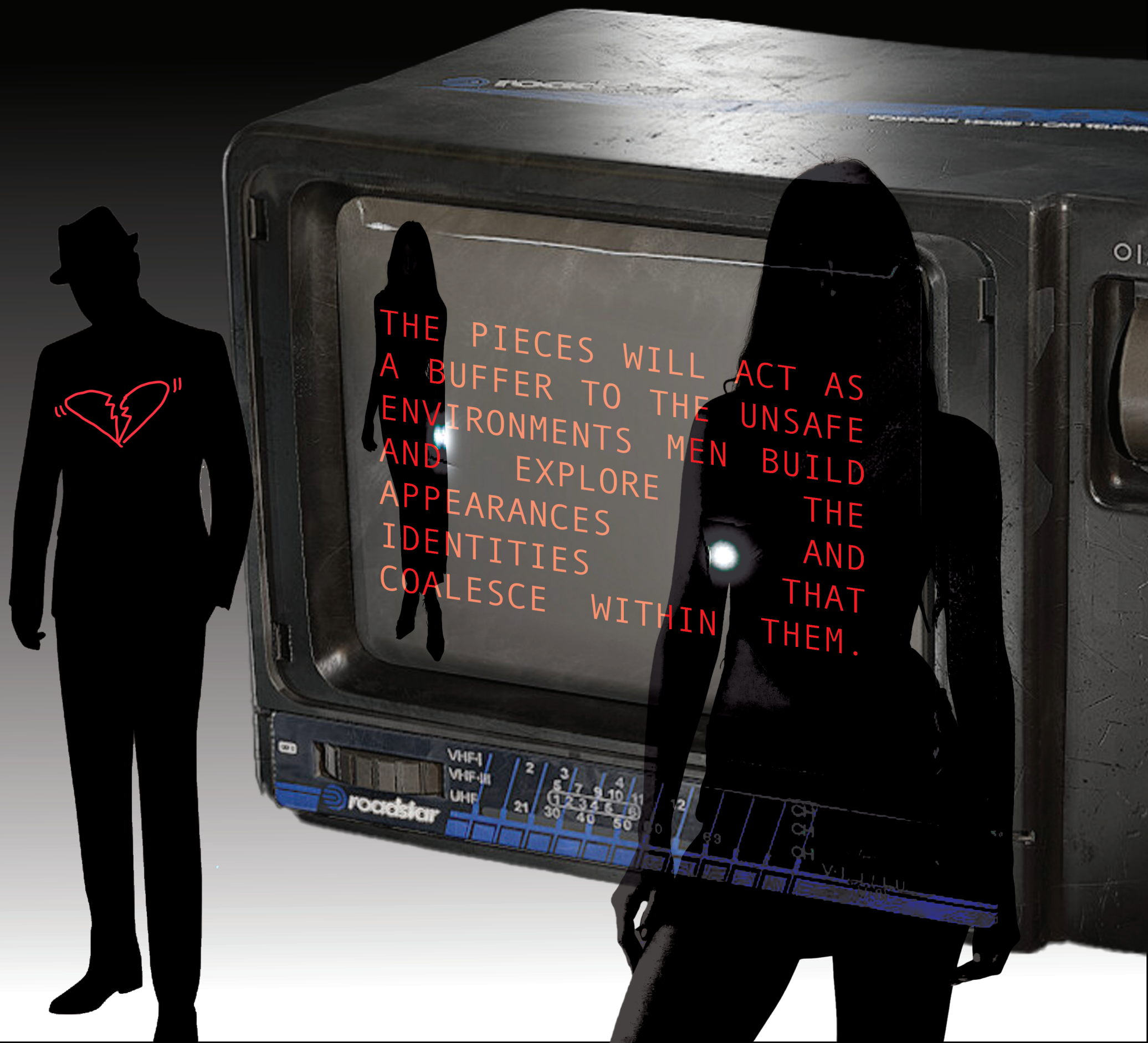
sensualité



a woman's body and sensual presence is an implicitly bound element of the experience of womanhood, as womens' bodies face sexual persecution and objectification in spaces occupied by men (nearly all spaces of power).



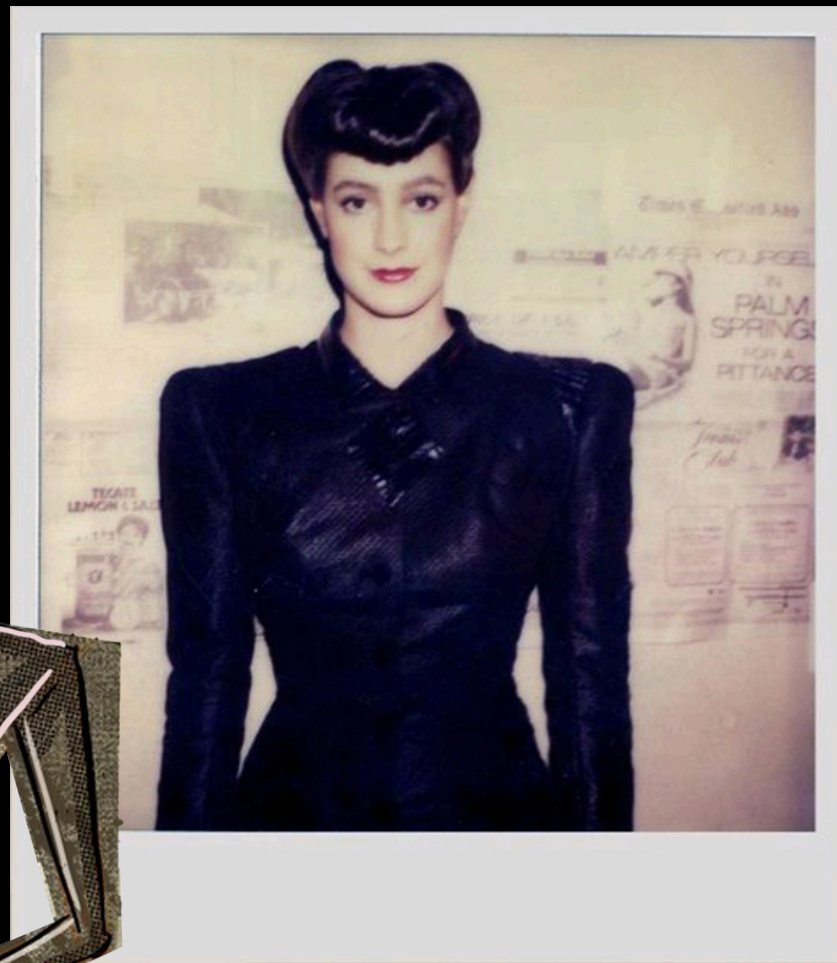
Corporeal:
relating to a person's body, especially
as opposed to their spirit.



stick it to the man... or become like him?

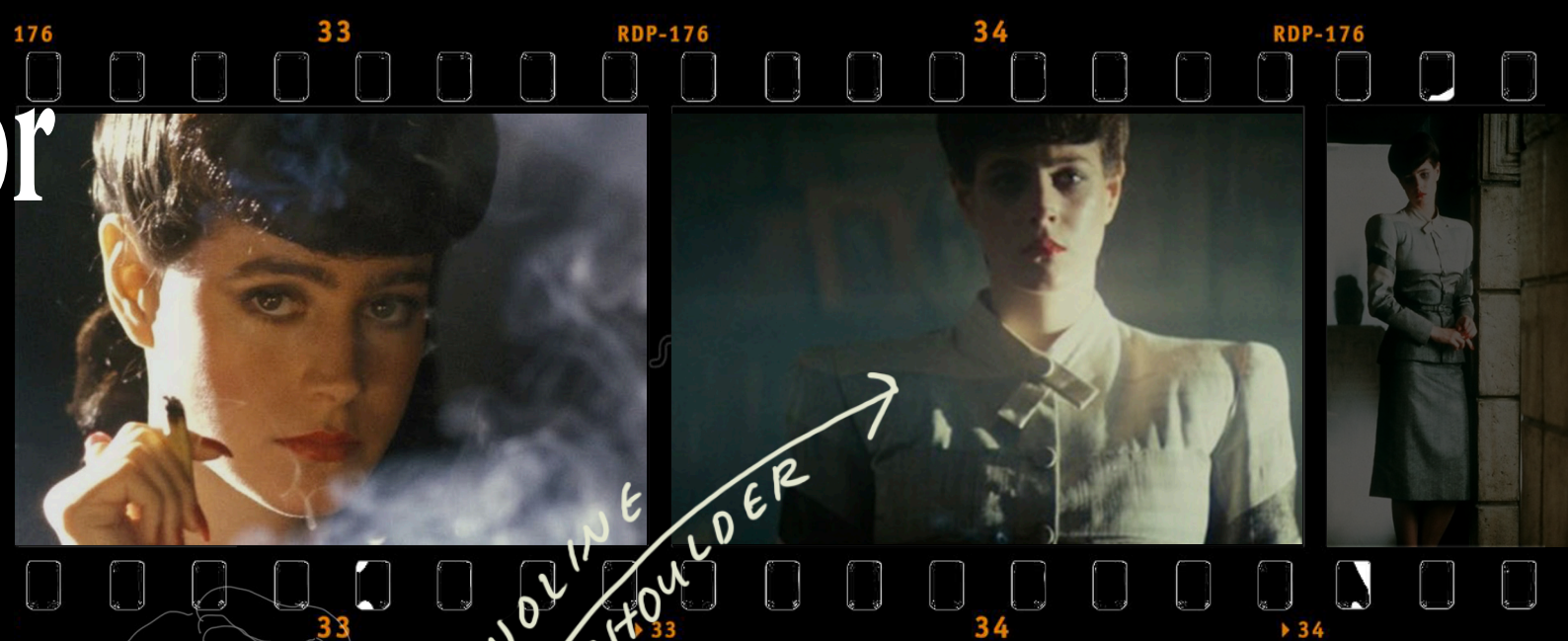
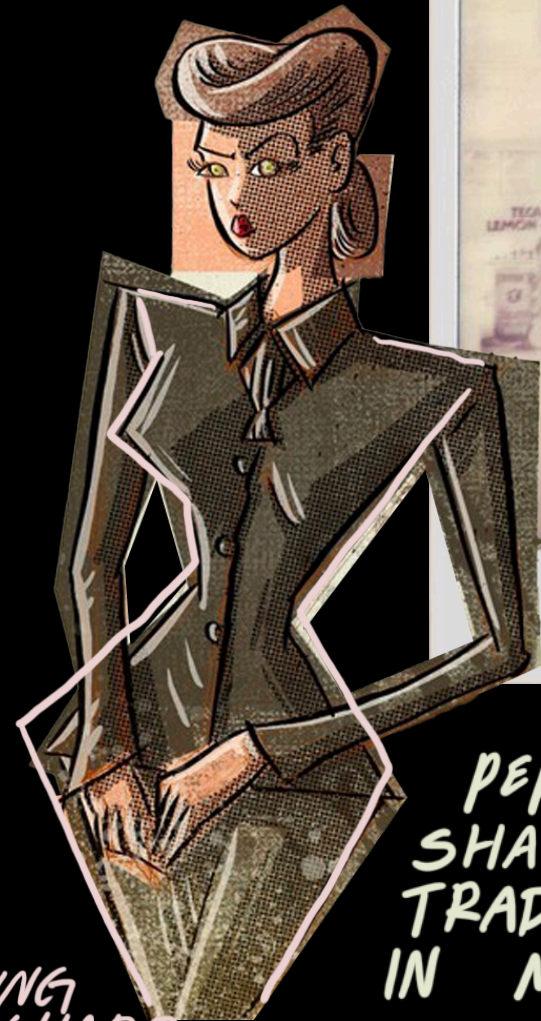


IN SILK SHIRTING
LINEN - GIVE SUIT
EFFECT

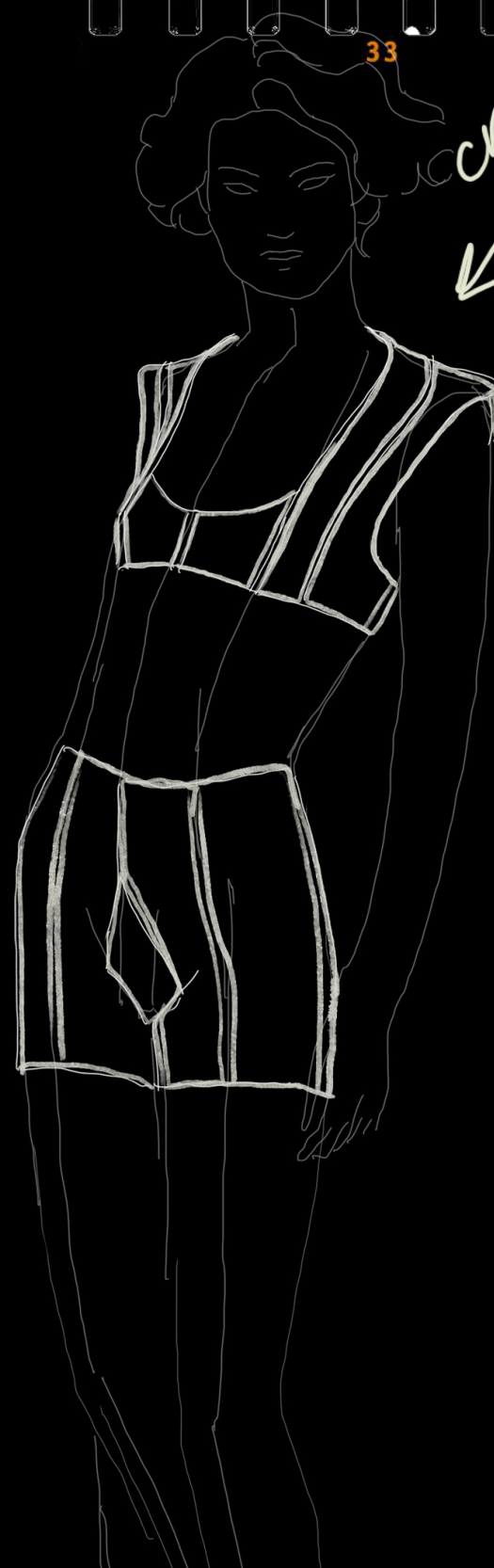


PERSONAS,
SHAPES/PATTERNS
TRADITIONALLY USED
IN MENS' CLOTHING

LOOKING
SHARP



CRINOLINE
SHOULDER



BLADE RUNNER

play hard in his game,
and stay soft in our own...



POINTED
BRAS



SATIN
FINISH



LARGE PRINT STRIPES, RECTANGULAR SHAPES





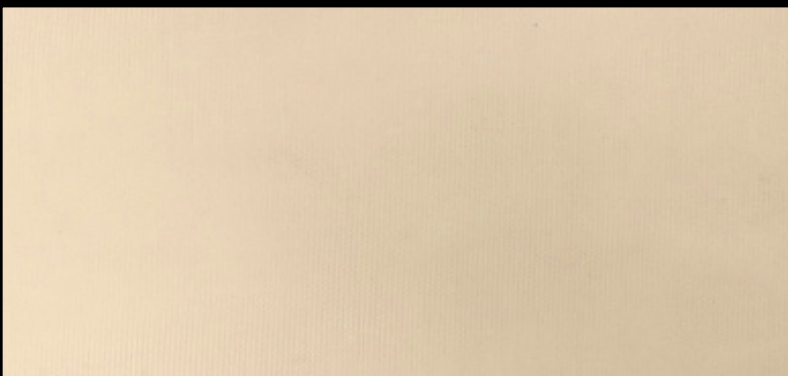
Glitter Stretch Tulle



silk organza



Stretch Panne Velvet



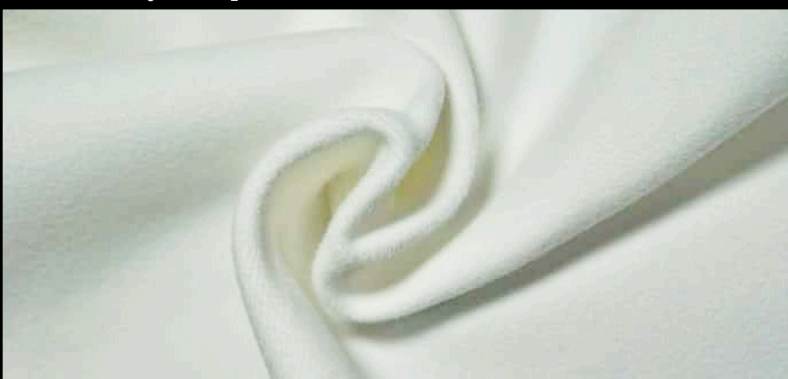
Milliskin Nylon Spandex



silk organza



stretch silk satin



Milliskin Nylon Spandex



stretch silk satin



stretch silk satin



stretch silk satin



stretch silk satin



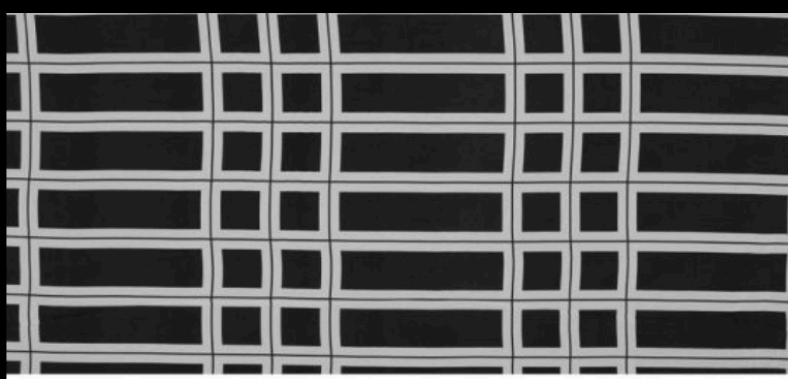
spandex nylon rib



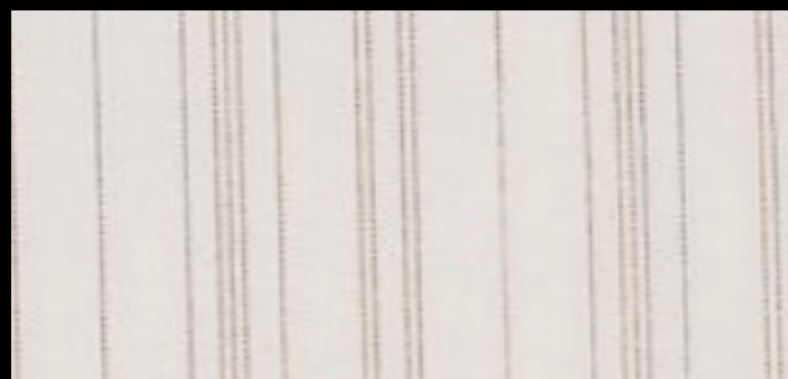
Stretch Panne Velvet



silk shirting



nylon spandex

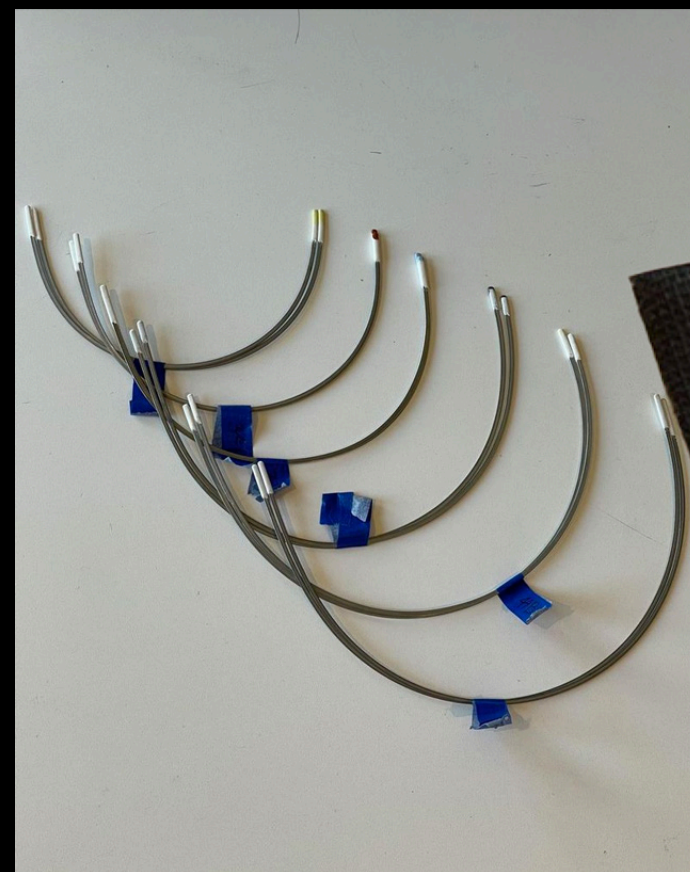
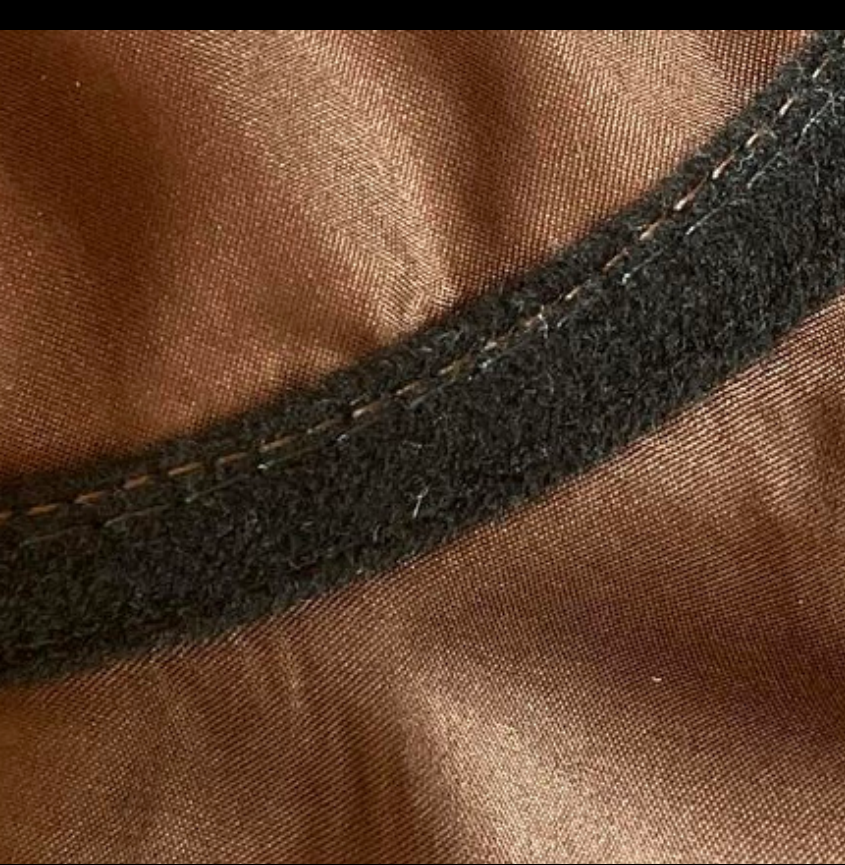


Cotton Stripe



lurex spandex metallic pinstripe

fabrication



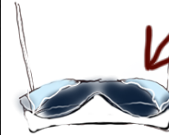
trims and materials



development... of a new prowess



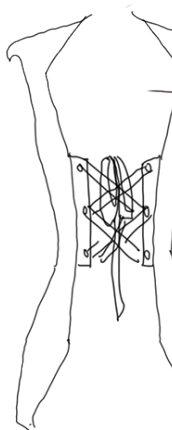
CRINOLINE SHOULDER PAD



mimic shirt collar



"boxer" style briefs



HARD ANGLES
ON
FEMININE CURVES...
+
SOFT FABRICS,
REMAIN SENSUA

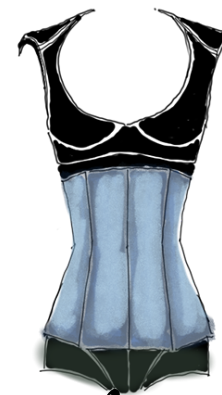


elastic, £3 13s. 6d. (London Corset Co. Ltd.)

73 1914. French evening brassiere, 12 fr. 50

MASCULINE
COLOR
PALETTE

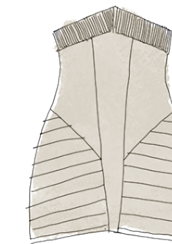
An internal balance in the soft- ness we grow and the hard edges we show



RECTANGULAR
SHAPES / BLOCKS



tailed
silk slips



Painted
on

Relieving us from one form to
another,

as if Identity is just decor.