

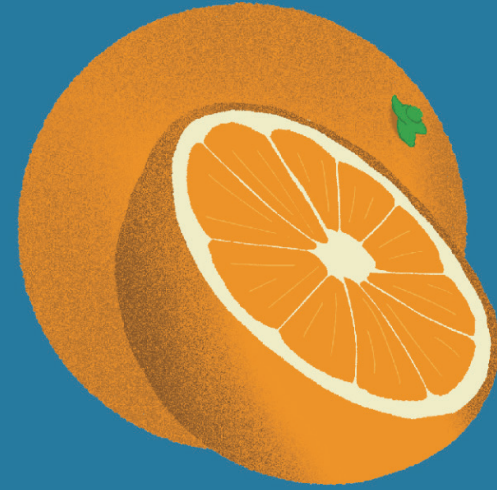
COMMON PRODUCT



**GALA APPLE**

An apple a day keeps competitors away.

COMMON PRODUCT



**NAVEL ORANGE**

Orange ya glad?

COMMON PRODUCT



**STRAWBERRIES**

A berry good addition to any good Market stand.

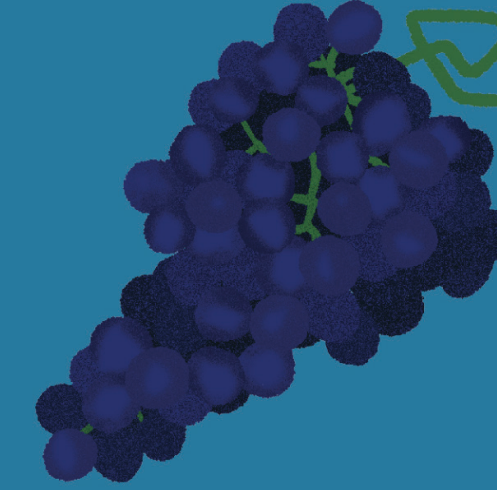
COMMON PRODUCT



**BANANA BUNCH**

Let me hear you say this split is bananas, B-A-N-A-N-A-S!

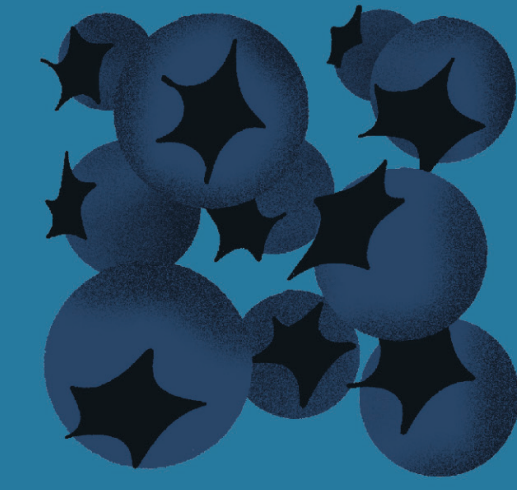
COMMON PRODUCT



**GRAPES**

And not the artificial medicine kind.

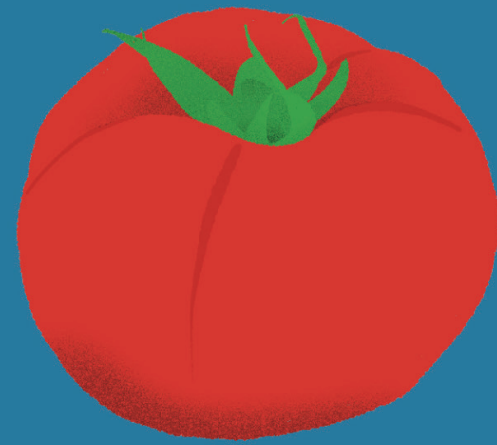
COMMON PRODUCT



**BLUEBERRIES**

Small but mighty.

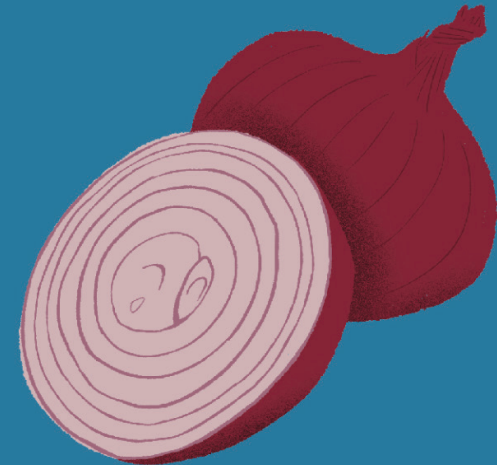
COMMON PRODUCT



**BEEFSTEAK TOMATO**

No cows were harmed in the making of this tomato.

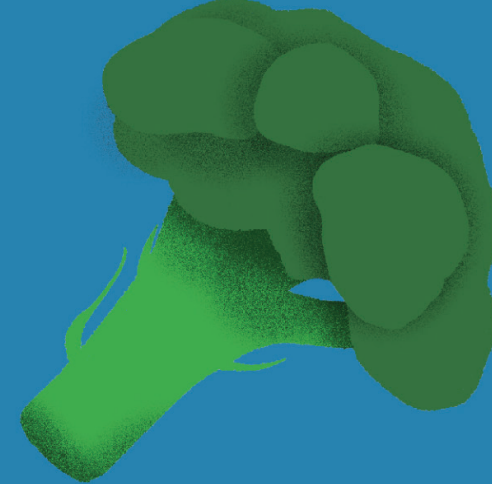
COMMON PRODUCT



**RED ONION**

Making competitors tear up one slice at a time.

COMMON PRODUCT



**BROCCOLI**

Ewwwwww...

COMMON PRODUCT



**PUMPKIN**

Halloween came early.

COMMON PRODUCT



**CARROT**

Just a carrot.

RARE PRODUCT



**BLACKBERRIES**

This card counts for 2 Products. You cannot play any Squash Cards.

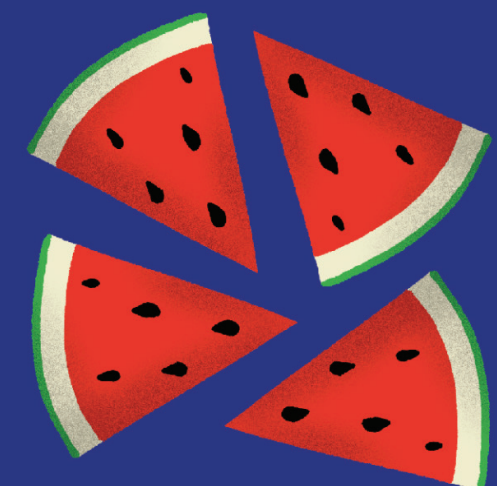
RARE PRODUCT



**AVOCADO**

This card counts for 2 Products. You cannot play any Squash Cards.

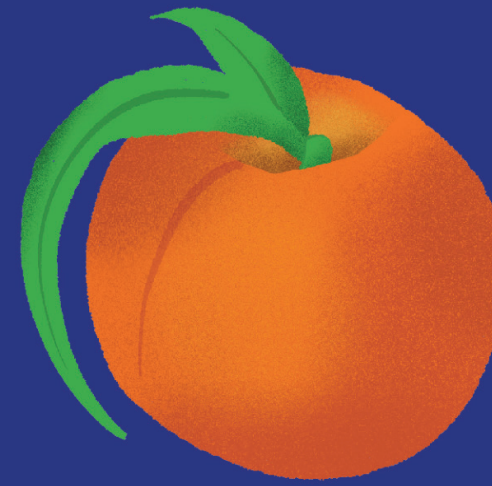
RARE PRODUCT



**WATERMELON**

This card counts for 2 Products. You cannot play any Squash Cards.

RARE PRODUCT



**PEACH**

This card counts for 2 Products. You cannot play any Squash Cards.

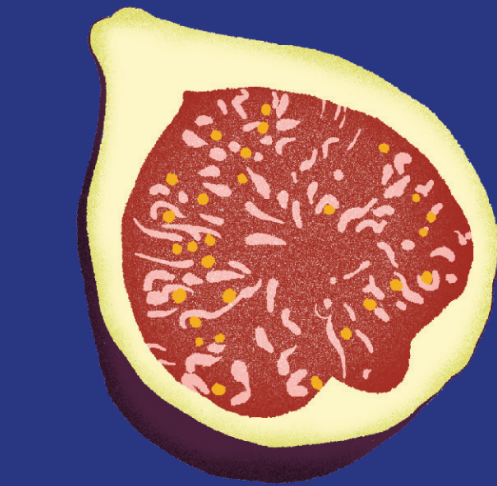
RARE PRODUCT



**COCONUT**

This card counts for 2 Products. You cannot play any Squash Cards.

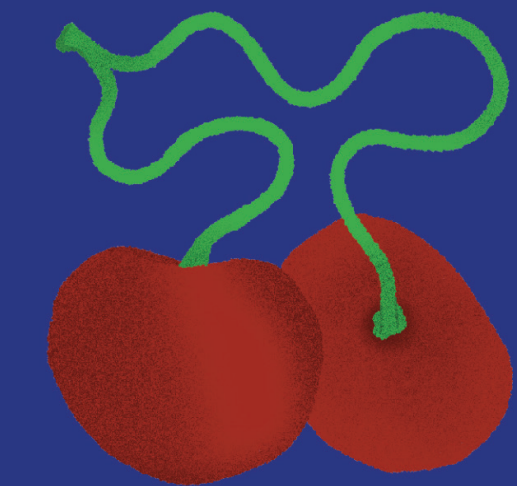
RARE PRODUCT



**MISSION FIG**

When this card enters your Market, you may add a Boost or Sabotage Card from the discard pile to your hand.

RARE PRODUCT



**BING CHERRIES**

When this card enters your Market, you may bring a Common Product Card from your hand into your Market.



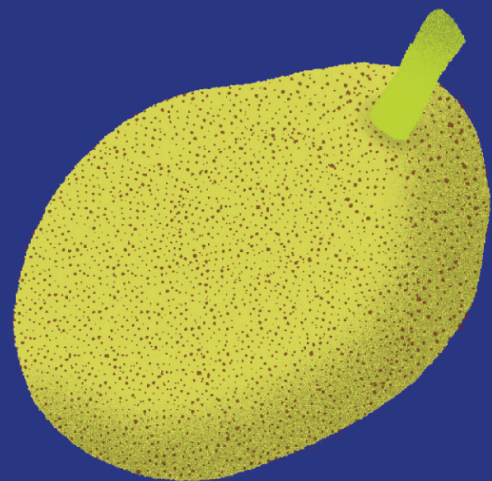
RARE PRODUCT



**DINO KALE**

When this card enters your Market, you may bring a Sabotage Card from your hand into another player's Market.

RARE PRODUCT



**JACKFRUIT**

When this card enters your Market, you may pull a card at random from another player's hand.

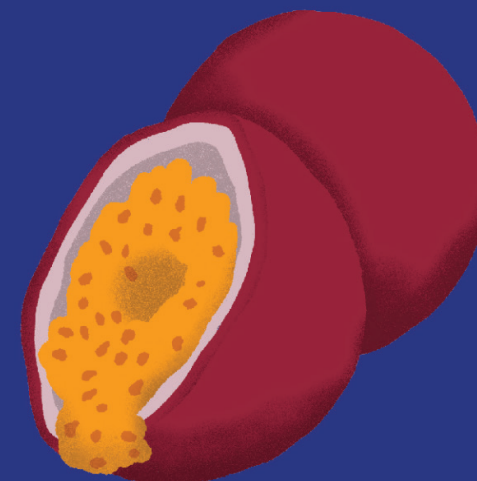
RARE PRODUCT



**PORCINI MUSHROOM**

If a Product Card in your Market would be DESTROYED you may SACRIFICE this card instead.

RARE PRODUCT

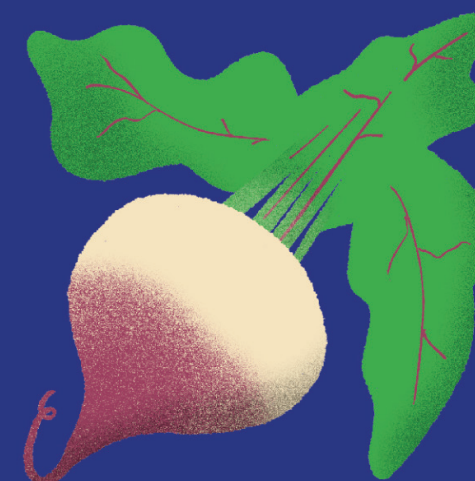


**PASSION FRUIT**

When this card enters your Market, you may add a Product Card from the discard pile to your hand.

If this card is SACRIFICED or DESTROYED, return it to your hand.

RARE PRODUCT

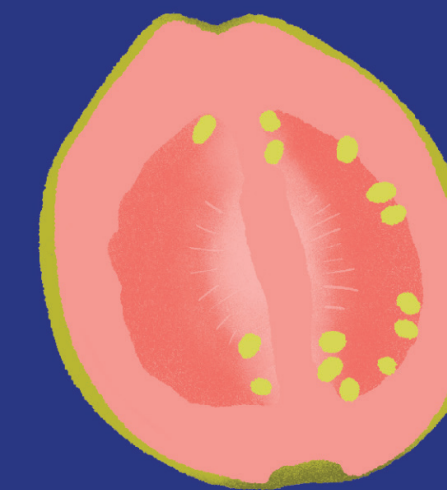


**TURNIP**

When this card enters your Market, you may force another player to DISCARD a card.

If this card is SACRIFICED or DESTROYED, return it to your hand.

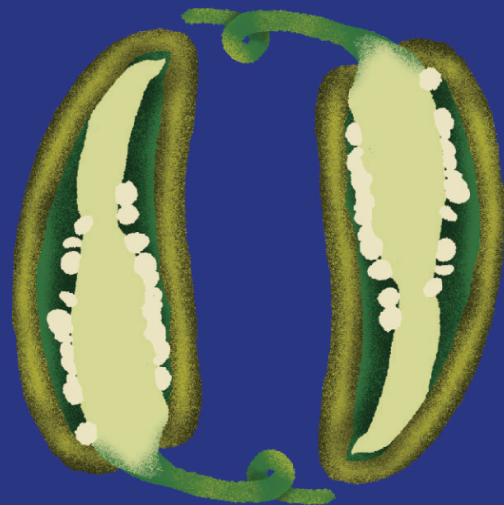
RARE PRODUCT



**GUAVA**

When this card enters your Market, you may also play a Market Tool Card from your hand.

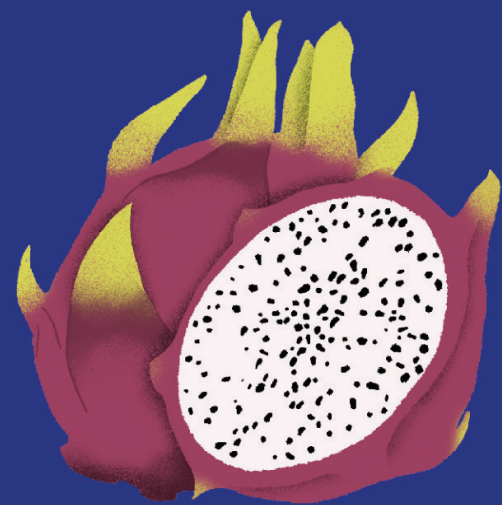
RARE PRODUCT



**JALEPEÑO PEPPER**

If this card is in your Market at the beginning of your turn, you may DESTROY a Product Card. If you do, immediately end your turn.

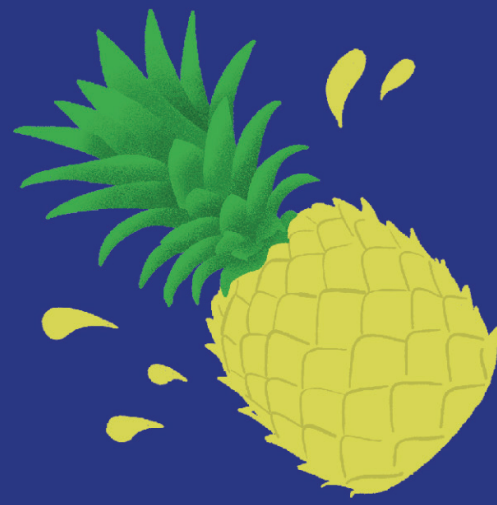
RARE PRODUCT



**DRAGON FRUIT**

If this card is SACRIFICED or DESTROYED, you may DESTROY a Product Card.

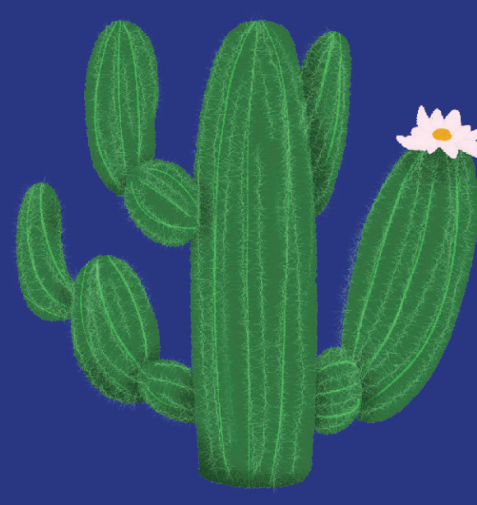
RARE PRODUCT



**PINEAPPLE**

When this card enters your Market, return a card in any player's Market to their hand.

RARE PRODUCT



**CACTUS**

When this card enters your Market, you may DESTROY a Boost Card or SACRIFICE a Sabotage Card.

RARE PRODUCT



**KING TRUMPET MUSHROOM**

Common Produce Cards cannot enter anyone's Market except yours.

RARE PRODUCT



**CHILI PEPPER**

When this card enters your Market, each player (including you) must SACRIFICE a Product Card.

RARE PRODUCT



**FLOWER BOUQUET**

When this card enters your Market, DRAW a card.

If this card is SACRIFICED or DESTROYED, return it to your hand.

RARE PRODUCT



**PURE RAW HONEY**

When this card enters your Market, you may STEAL a Common Product Card from another player's Market.

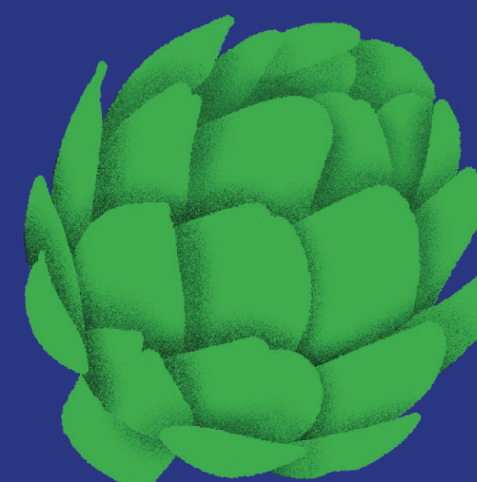
RARE PRODUCT



**FRESH BAKED BAGUETTE**

When this card enters your Market, DRAW 2 cards and DISCARD a card.

RARE PRODUCT



**ARTICHOKE**

When this card leaves your Market, you may pull a card at random from another player's hand.

RARE PRODUCT



**BUNCH OF HERBS**

If this card would be SACRIFICED or DESTROYED, you may DISCARD a card instead.

RARE PRODUCT



**GARLIC**

If this card is in your Market at the beginning of your turn, you may SACRIFICE this card, then bring a Product Card from the discard pile into your Market.



RARE PRODUCT



**HOT POTATO**  
Each time any player begins their turn, move this card to that player's Market.  
This card cannot be SACRIFICED or DESTROYED.

RARE PRODUCT



**PEAR**  
When this card enters your Market, you may bring a Boost Card from your hand into your Market.

MARKET TOOL



**NEWSPAPER FEATURE**  
Choose a player to skip their next turn.

MARKET TOOL



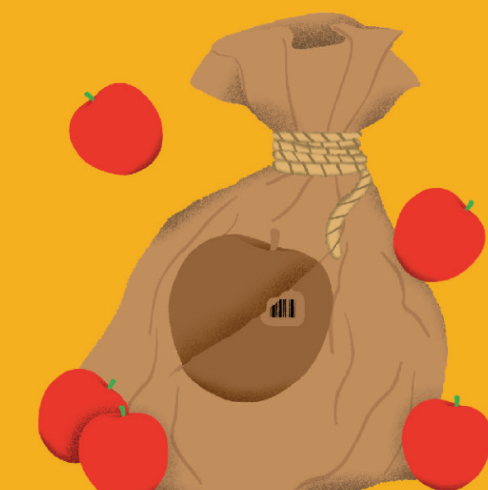
**BAD BATCH**  
Return a card in another player's Market back to their hand. That player must DISCARD a card.

MARKET TOOL




**LOST SHIPMENT**  
Shuffle this card, your hand, and the discard pile into the deck. DRAW 5 cards.

MARKET TOOL



**MARKET THIEF**  
Look at another player's hand. Choose a card and add it to your own hand.

MARKET TOOL




**LUCKY DUCK**  
DRAW 2 cards and DISCARD 3 cards, then take another turn.

MARKET TOOL



**FRUIT TORNADO**  
Return a card in each player's Market (including yours) to their hand.

MARKET TOOL




**DELIVERY SERVICE**  
Move a Boost or Sabotage Card from any player's Market to any other player's Market.

MARKET TOOL



**RESET SEED**  
Each player (including you) must SACRIFICE all Boost and Sabotage Cards in their Market. Shuffle the discard pile into the deck.

MARKET TOOL



**STAND DESTRUCTION**  
DESTROY a Boost Card or SACRIFICE a Sabotage Card.

MARKET TOOL



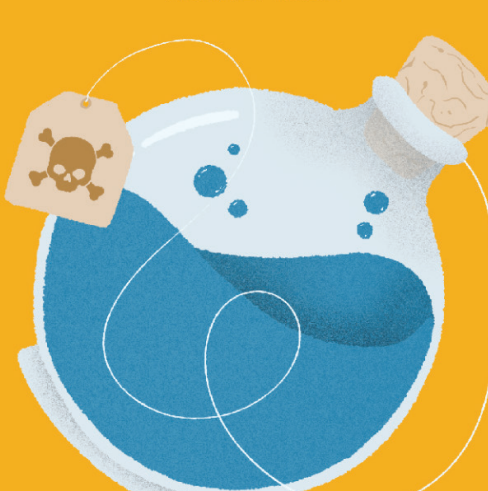
**TWO-FOR-ONE**  
SACRIFICE a card, then DESTROY 2 cards.

MARKET TOOL



**SUPPLY SWAP**  
Trade hands with any other player.

MARKET TOOL



**PRODUCE POISON**  
DESTROY a Product Card.

SABOTAGE




**TINY MARKET**  
If at any time you have more than 5 Products in your Market, SACRIFICE a Product Card.

SABOTAGE



**BITTER HARVEST**  
Each time a Product Card enters or leaves your Market, DISCARD a card.

SABOTAGE



**THUNDERSTORM**  
If this card is in your Market at the beginning of your turn, DISCARD a Boost Card.

SABOTAGE



**TAX SEASON**  
All of your Product Cards are considered Common Products with no effects.



SABOTAGE



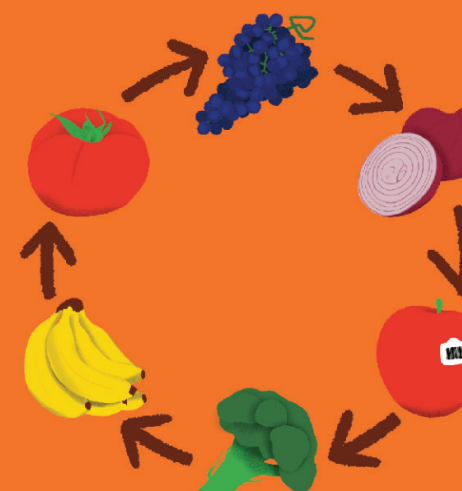
**BROKEN MARKET**  
You cannot play Boost Cards.

SABOTAGE



**EXPOSED INVENTORY**  
Your hand must be visible to all players.

SABOTAGE




**ROTATING STOCK**  
If this card is in your Market at the beginning of your turn, SACRIFICE a Product card, then DRAW a card.

SABOTAGE



**SLOW DAY**  
You cannot play Squash Cards.

SABOTAGE



**ROTTEN PRODUCE**  
All of your Product Cards lose all of their value and effects.

BOOST




**ORGANIC PRODUCE LABEL**  
Double the value of all Common Product Cards in your Market.

BOOST



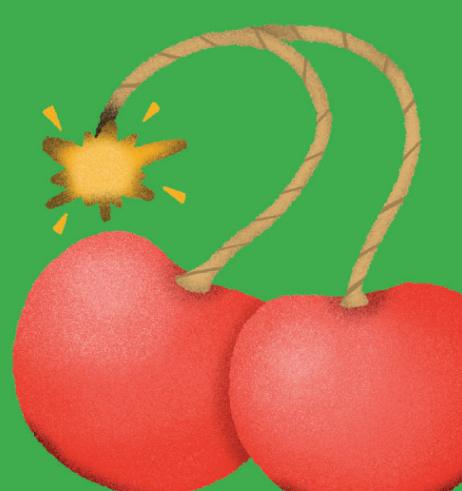
**RETURN POLICY**  
If this card is in your Market at the beginning of your turn, you may DISCARD a card, then DRAW a card.

BOOST



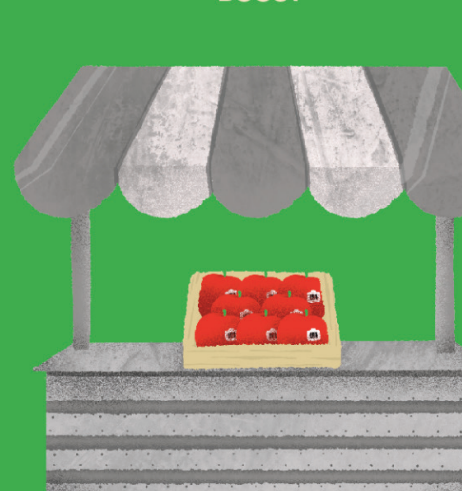
**TWO PEAS IN A POD**  
If this card is in your Market at the beginning of your turn, you may play 2 cards during your Action Phase.

BOOST



**CHERRY BOMB**  
If this card is in your Market at the beginning of your turn, you may SACRIFICE a card, then DESTROY a card. If you do, immediately end your turn.

BOOST




**REINFORCED STAND**  
Your Product Cards cannot be DESTROYED.

BOOST



**FRUIT SALAD**  
If this card is in your Market at the beginning of your turn, you may DISCARD 3 cards, then STEAL a Product Card.

BOOST



**LOYALTY PROGRAM**  
Cards you play (including Squash Cards) cannot be Squashed.

BOOST



**FREE SAMPLES**  
If this card is in your Market at the beginning of your turn, you may DRAW 2 cards during your Draw Phase.

SQUASH



**SQUASH**  
Play this card when another player tries to play a card. Stop their card from being played and send it to the discard pile.

SQUASH



**SUPER SQUASH**  
Play this card when another player tries to play a card. Stop their card from being played and send it to the discard pile. This card cannot be squashed.

**PLEASE NOTE:**  
Most of these cards have multiples in the game deck. This document solely showcases each card's illustrations and effects.