

JP THE SUPER SEAL



A FUN-FILLED LEARNING ACTIVITY BOOK FOR ALL AGES!

This activity book is designed for elementary students but can be fun for all ages!

The book contains general information about NOAA's Joint Polar Satellite System, a collaborative effort between NOAA and NASA.

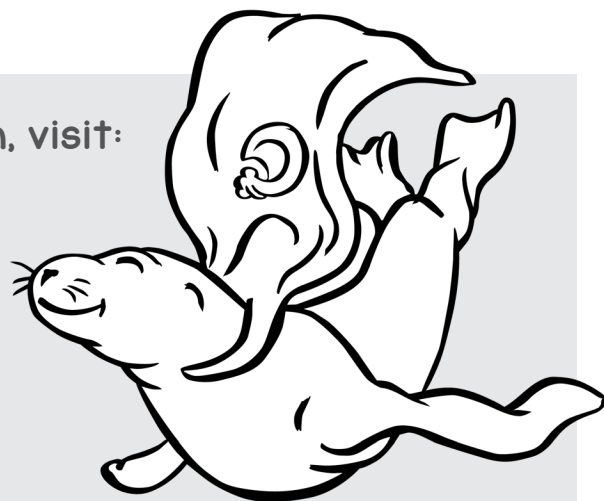
For more information on the JPSS mission, visit:

nesdis.noaa.gov/jpss

Follow us on Twitter and Facebook:

twitter.com/JPSSProgram

facebook.com/JPSS.Program



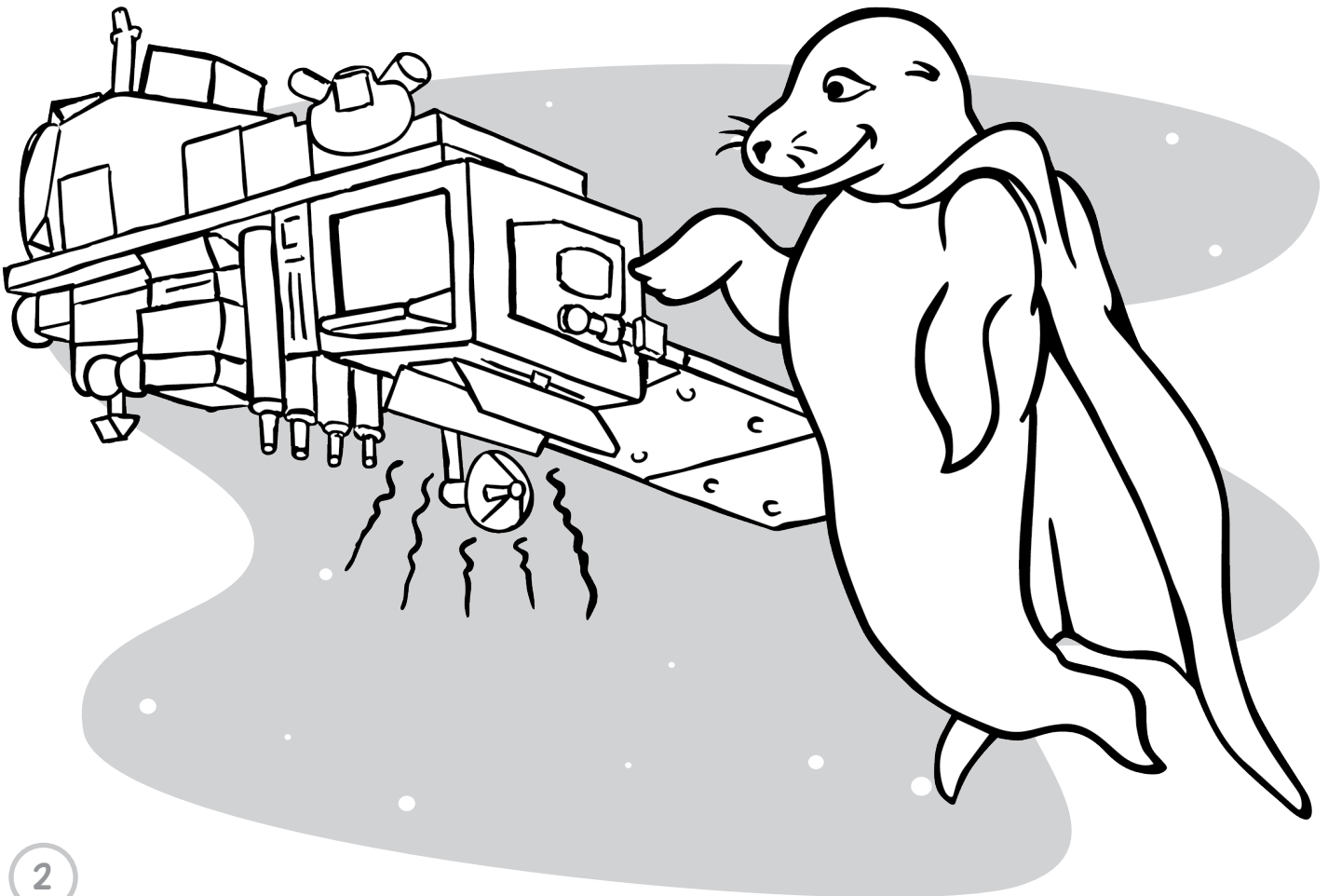
The Joint Polar Satellite System (JPSS) is a group of satellites that look at the Earth at all times.

These satellites go around the Earth, in a path called a **POLAR ORBIT**. They move over the North and South poles fourteen times a day! One animal that lives at both of these poles is a seal.

To explain what JPSS satellites do, imagine that JPSS is a friendly, Earth-seeing seal named **JP the Super Seal**. JP the Super Seal will share a story about what he does every day.

ACTIVITY: COLOR JP!

COLOR JP and the satellite.



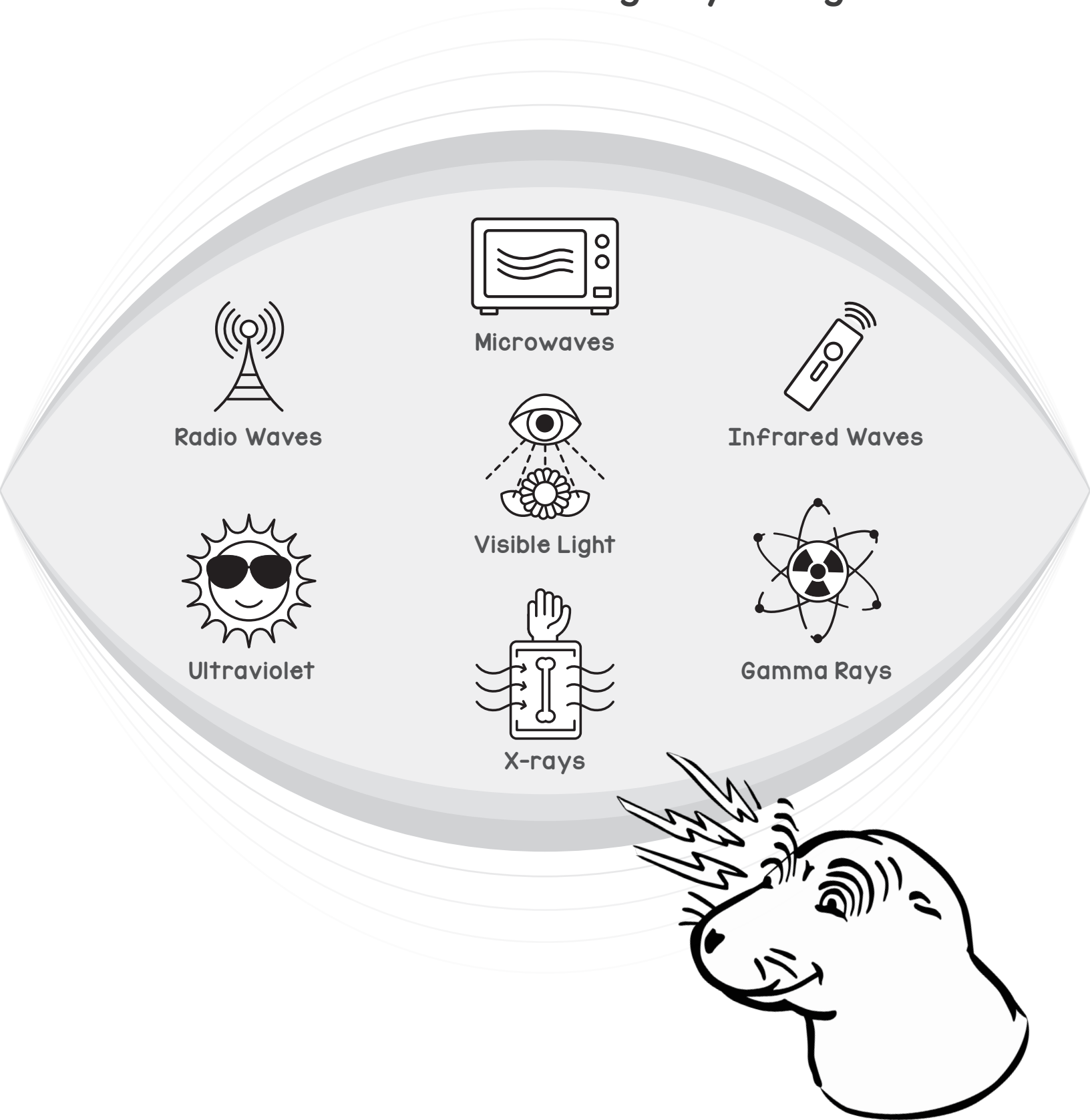
As a flying seal that travels around the Earth, JP sees the North Pole, the South Pole and every country.

ACTIVITY: COLOR & MATCH

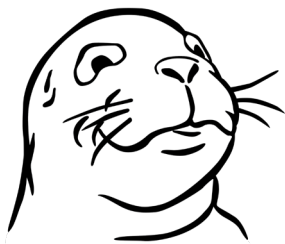
COLOR the Earth. Help JP place the correct flag on our planet.
MATCH the North Pole or South Pole on the correct flags on Earth.



**JP the Super Seal has super sight,
to see the world during day or night.**



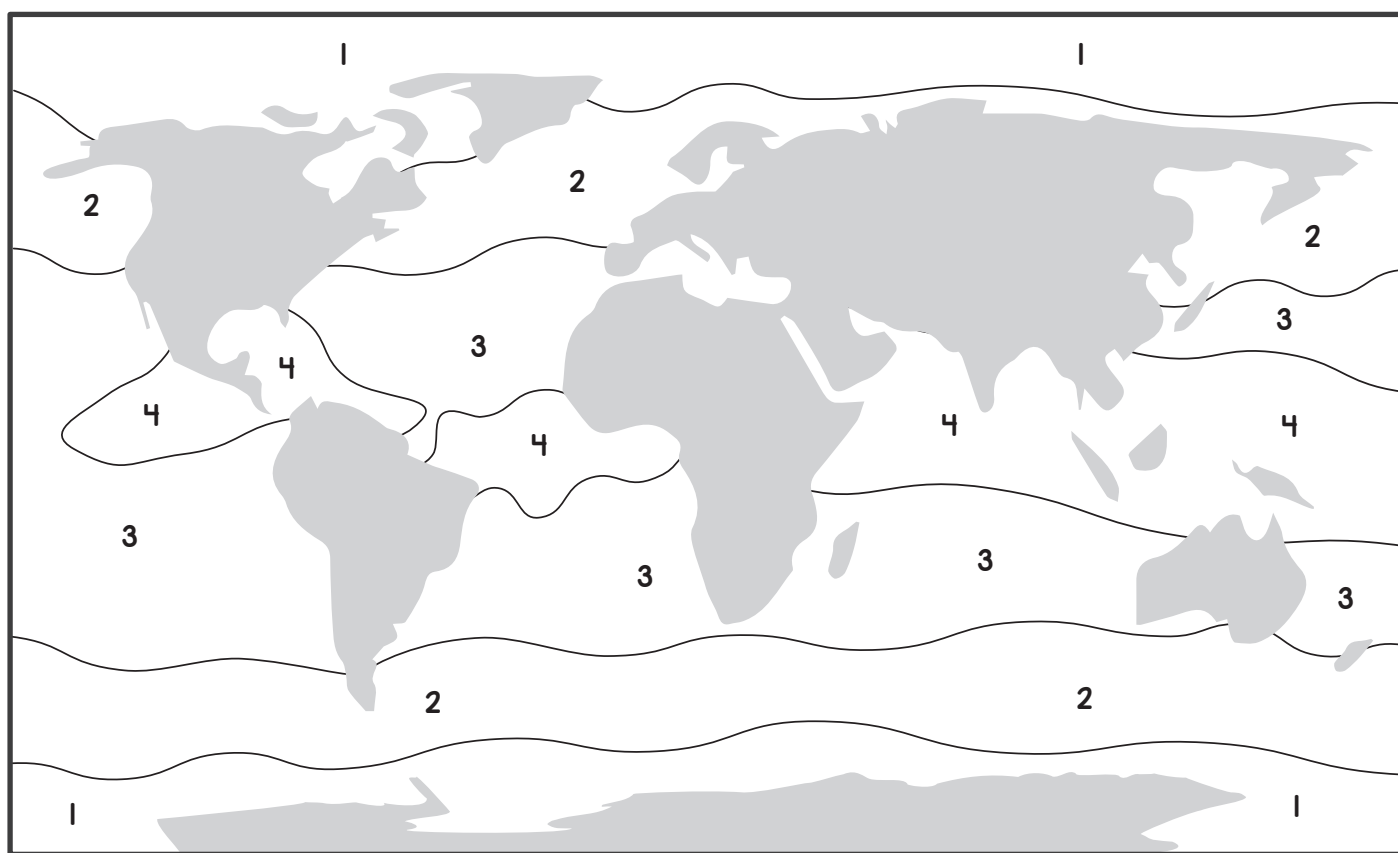
His special eyes gave a unique view,
and cold ocean water was vivid and blue!



Things looked red when it was hot,
and things looked blue when it was not.

ACTIVITY: COLOR BY NUMBER!

COLOR the sea surface temperature using the color key below.



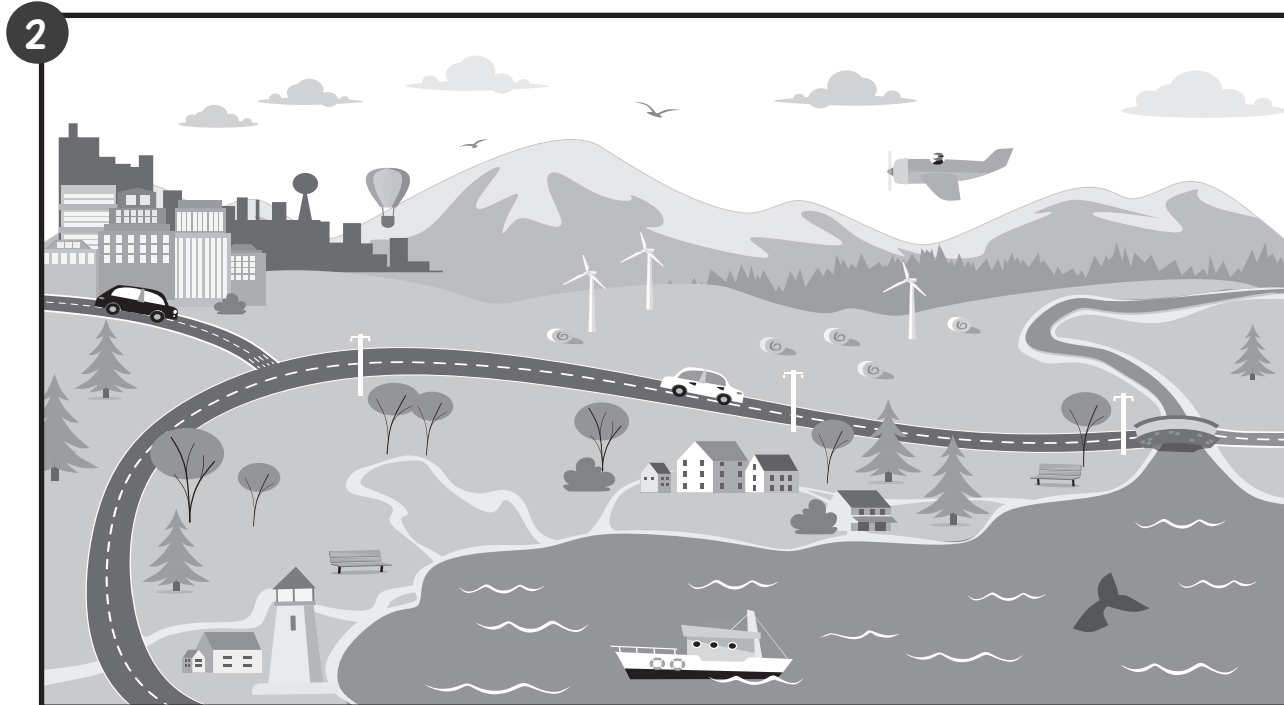
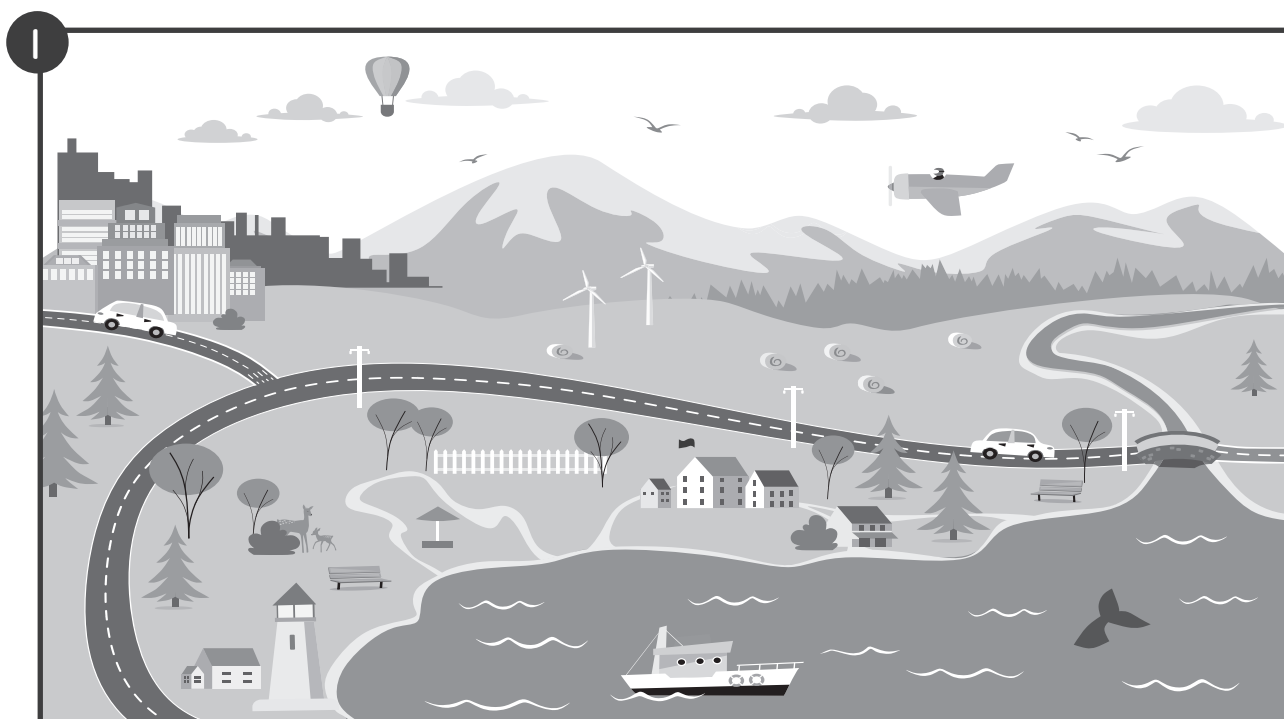
Color Key

1	2	3	4
Blue	Green	Yellow	Red

JP could see all the weather from space.
He saw clouds and towns and mountains and lakes.

ACTIVITY: SPOT THE DIFFERENCE!

CIRCLE the twelve differences in the second picture.



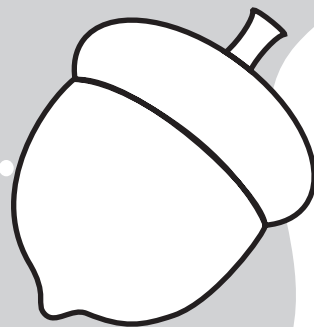
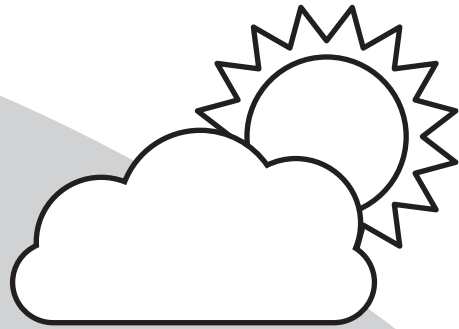
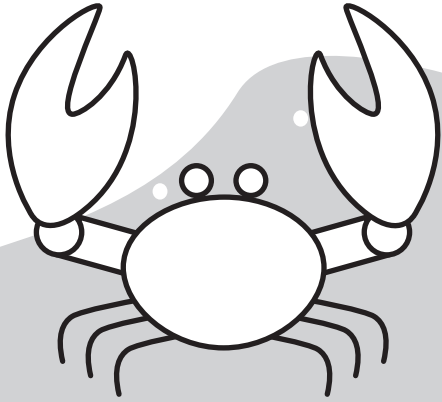
JP had tools that allowed him to measure,
the ocean, the air and Earth's changing weather.



ACTIVITY: COLOR THE WEATHER!

Help JP collect weather data!

COLOR all of the symbols that are related to weather!



On JP's adventures he saw many things, like cornfields and flowers and trees in the spring.

ACTIVITY: COLOR JP IN SPRING!

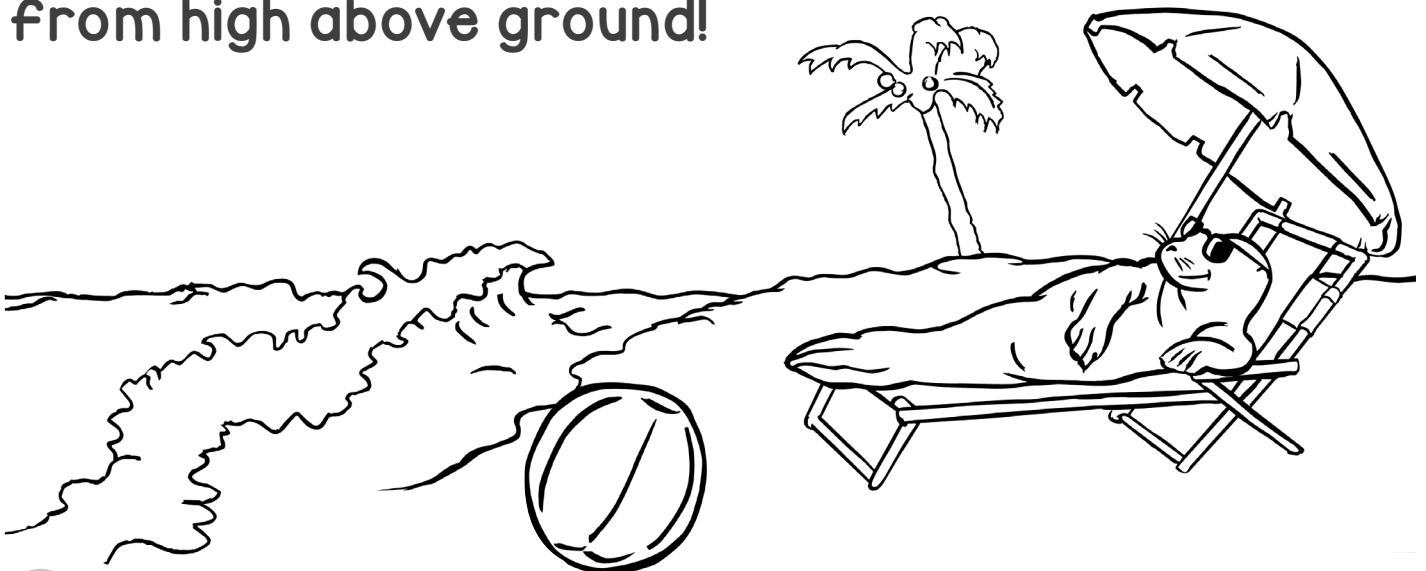
COLOR JP the Super Seal as he explores spring weather!



And in the winter,
he watched the storms blow,
helping the polar bears
blend in the snow.

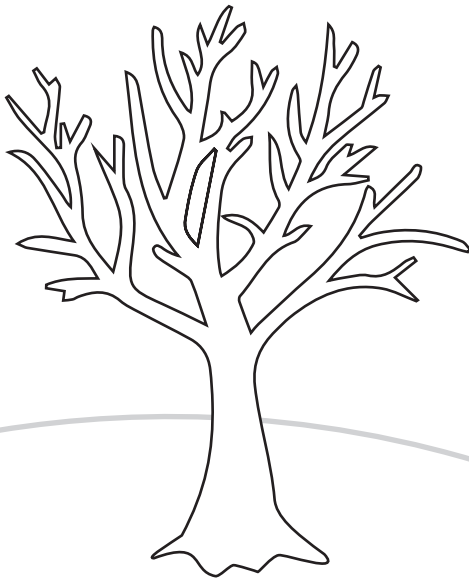


JP loves flying around and around,
seeing Earth's seasons change
from high above ground!

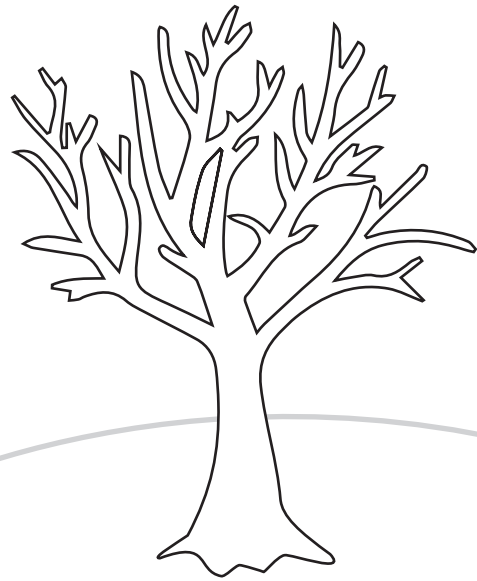


ACTIVITY: DRAW THE WEATHER!

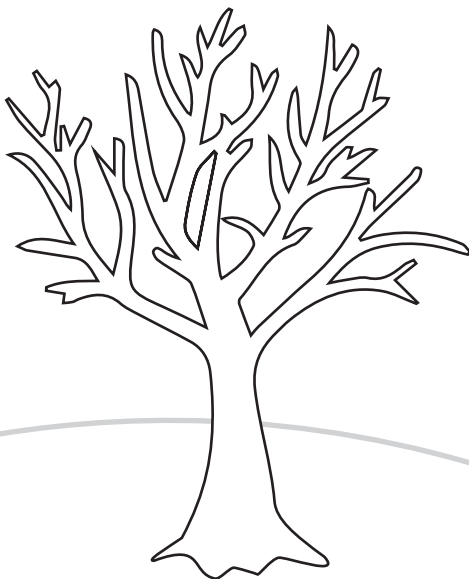
DRAW the weather happening around you.
DRAW what the trees look like during the winter, spring,
summer and fall!



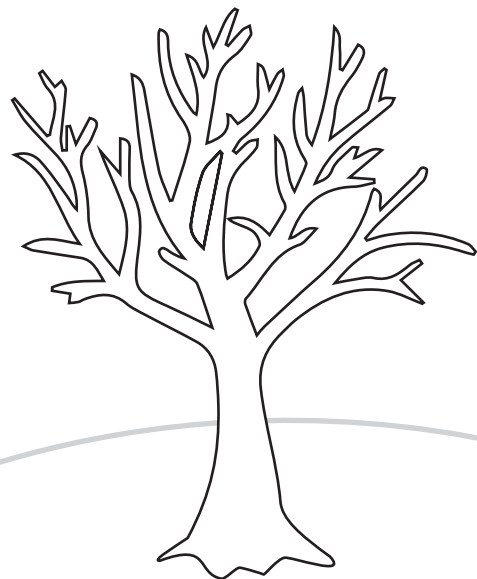
Winter



Spring

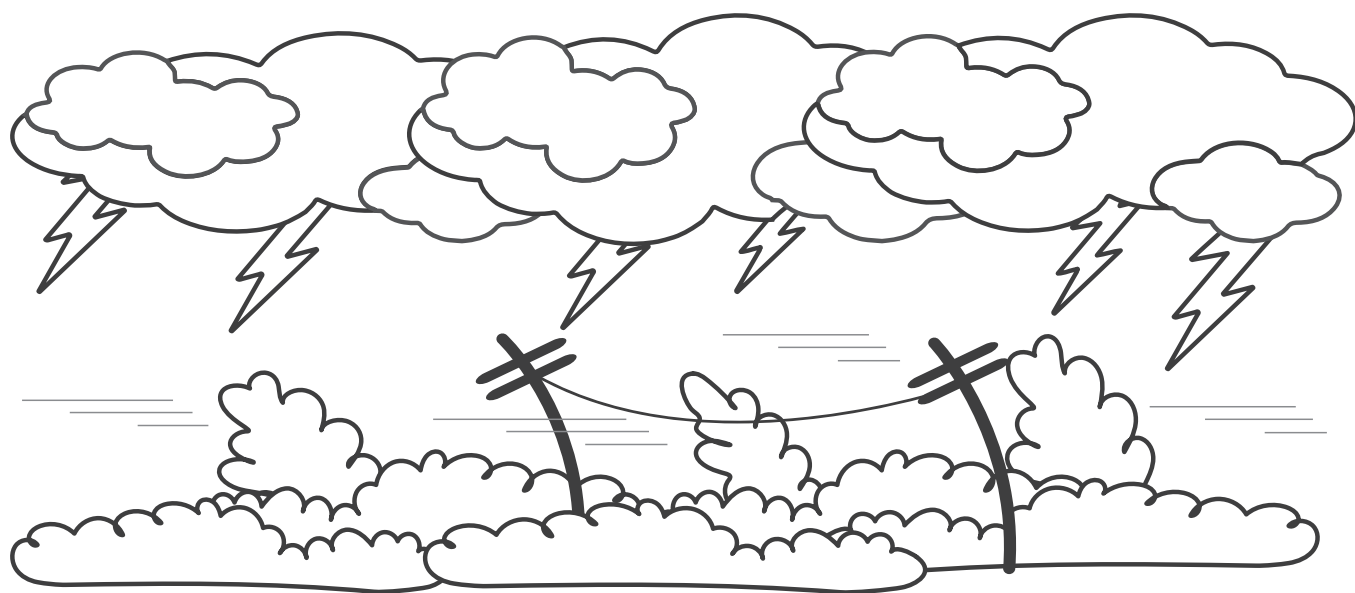


Fall

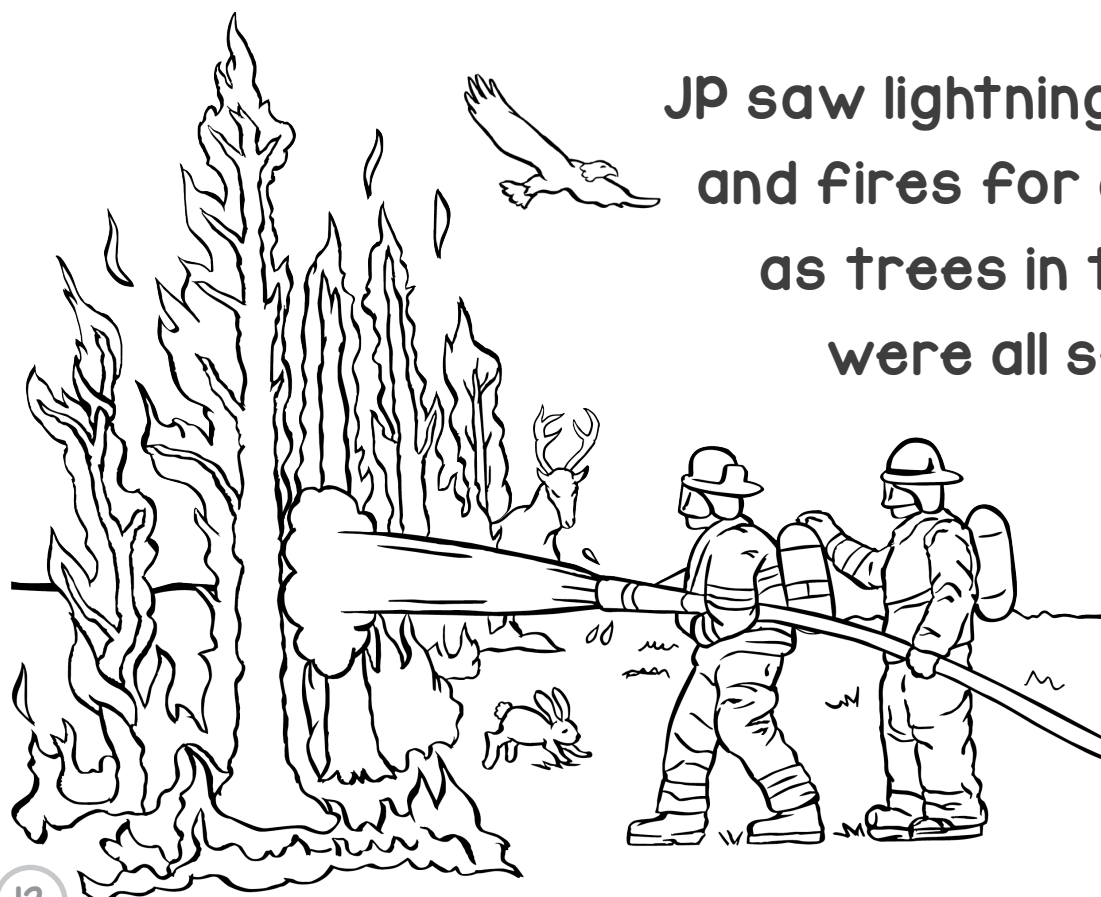


Summer

Some days were stormy
but JP was tough,
he watched over our planet
when weather was rough.



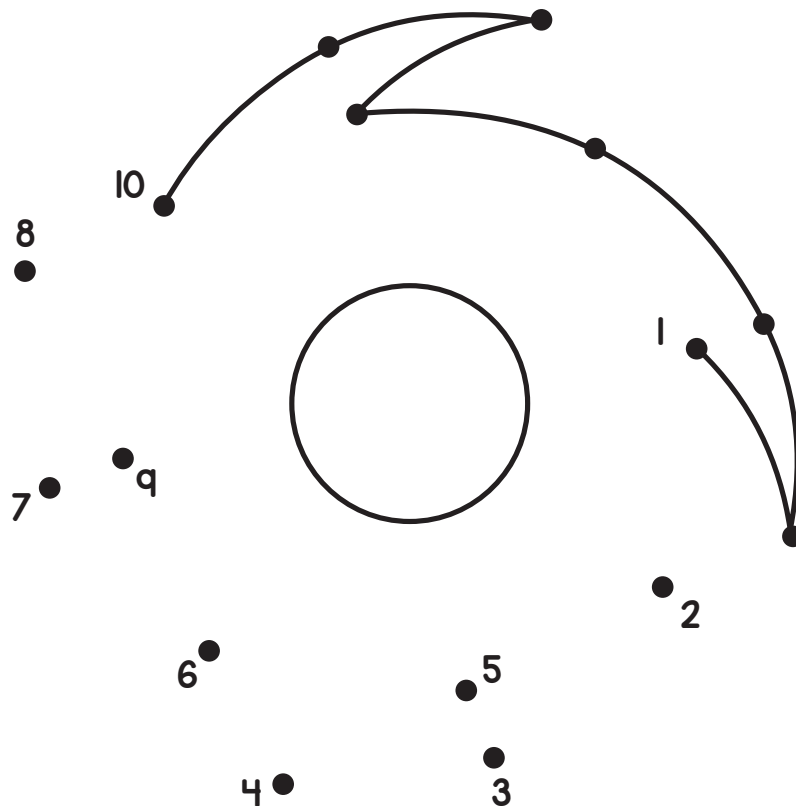
JP saw lightning
and fires for days,
as trees in the forest
were all set ablaze!



JP saw hurricanes forming at sea,
And sent back the data to warn you and me!

ACTIVITY: CONNECT THE DOTS!

CONNECT the dots to the hurricane swirling in the ocean.

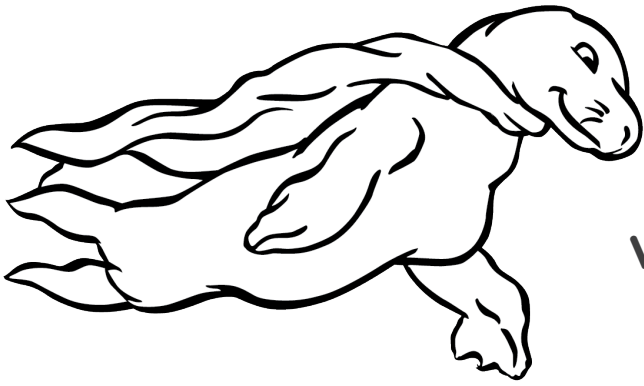


He gathers the data as fast as he can,
to give people the knowledge
to make the best plan.

During a hurricane
some people were saved...

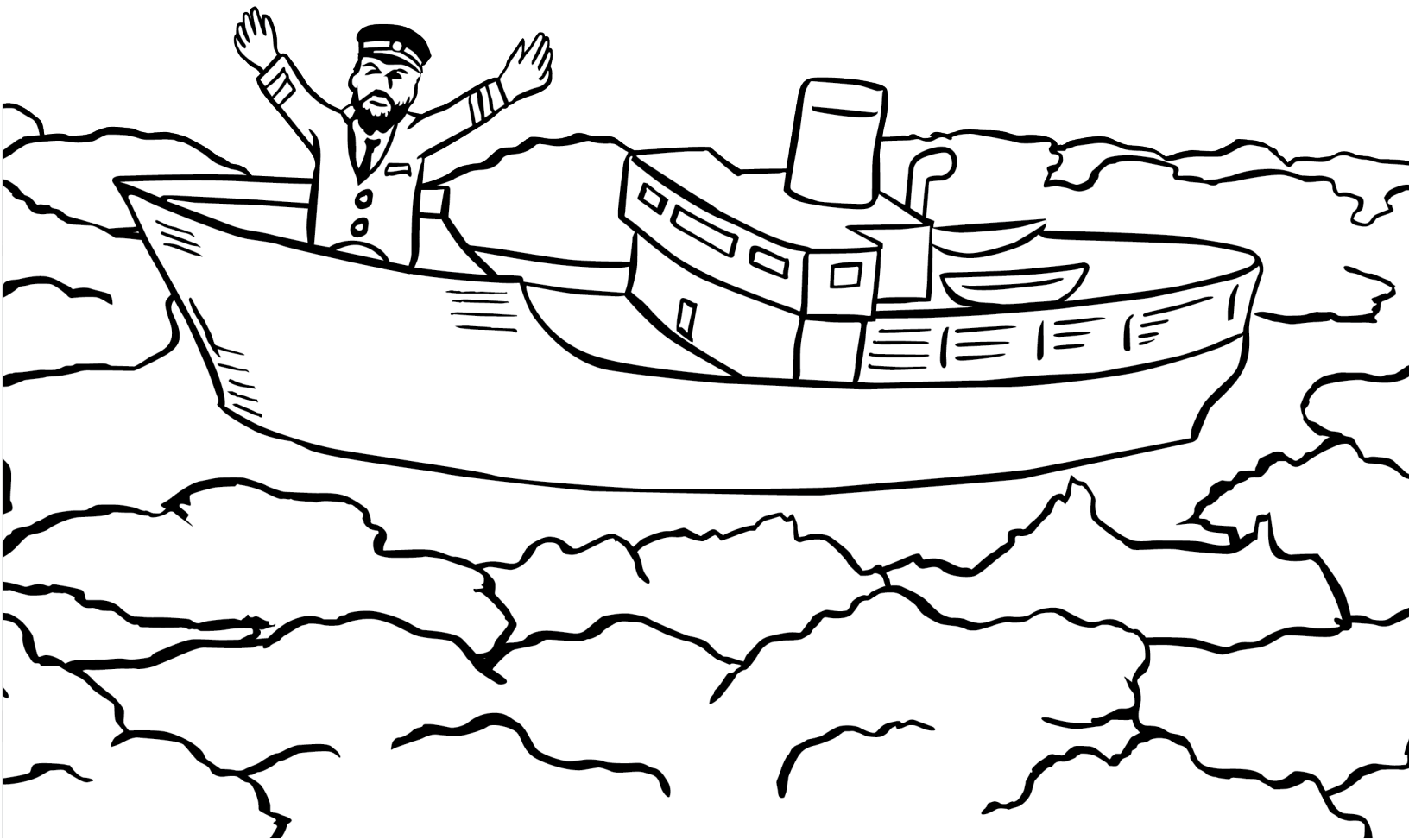


...because JP told them,
"Look out for that wave!"



What's this?

A ship stuck in ice
with no way to be freed!
Some help from JP
might be *just* what they need.

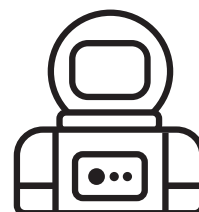
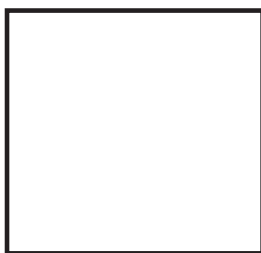
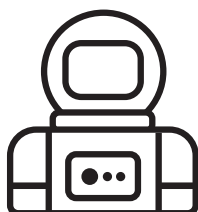
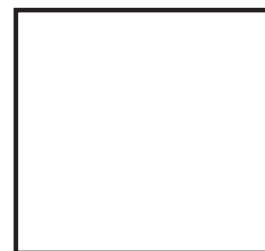


JP showed some scientists his view from the sky,
And mapped for the captain,
a route he could try.



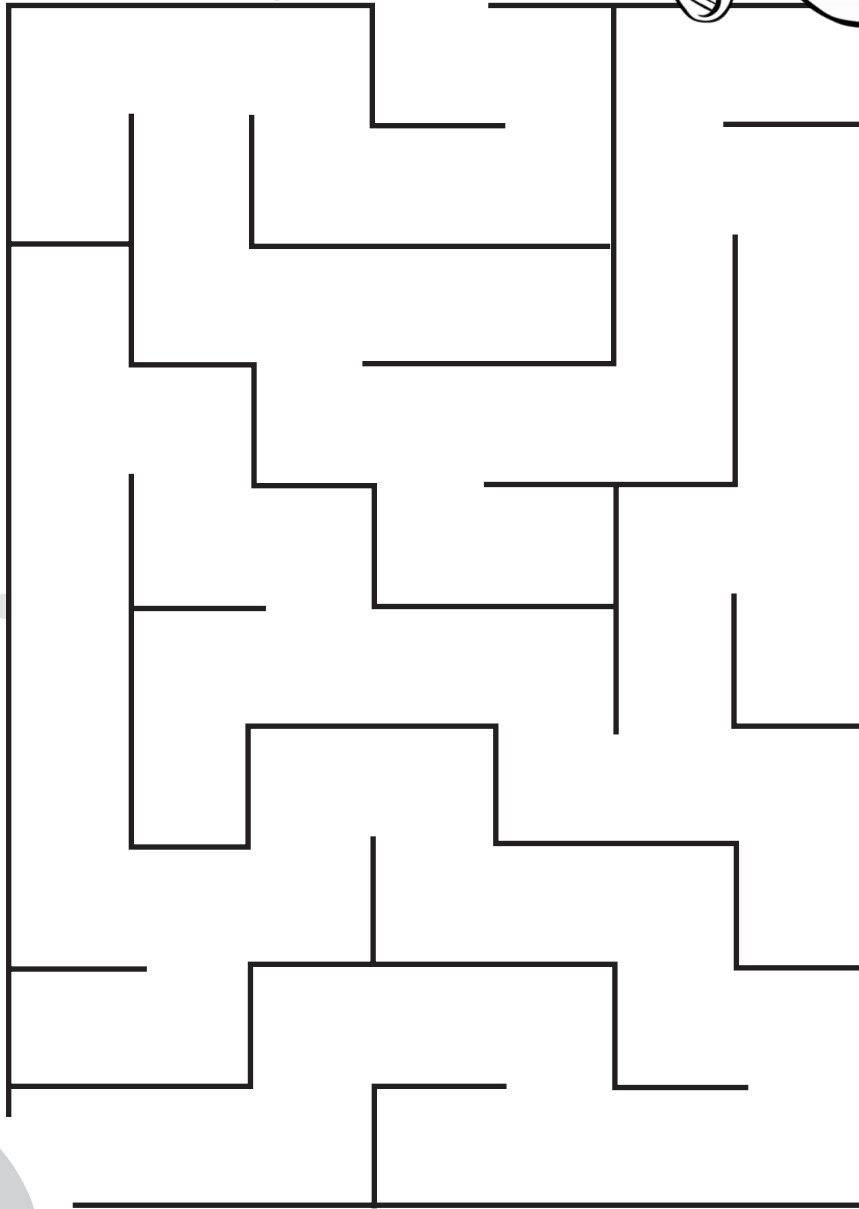
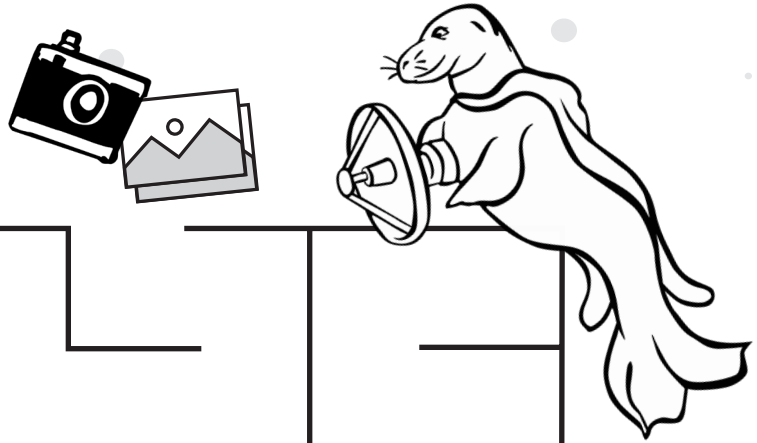
ACTIVITY: HELP JP AND THE SCIENTISTS!

DRAW what comes next in the pattern!



ACTIVITY: COMPLETE THE MAZE!

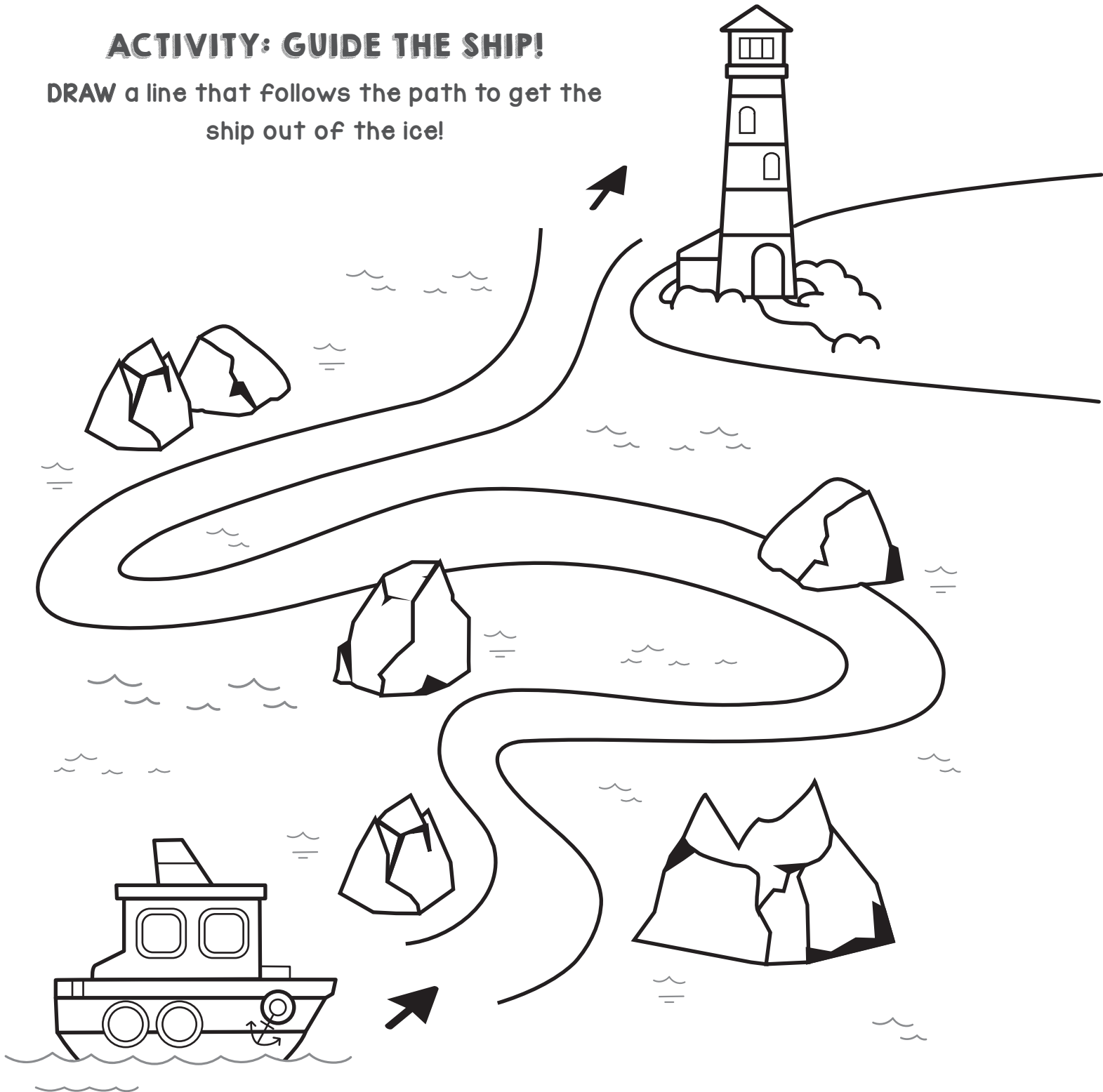
Help JP the seal send his photos to his scientist friends!
FOLLOW the maze to get the photos to the scientist.



JP guided the people way down on the boat
to follow a path that would set them to float!

ACTIVITY: GUIDE THE SHIP!

DRAW a line that follows the path to get the
ship out of the ice!



**“How did you do it?”
asked the Captain, relieved.**



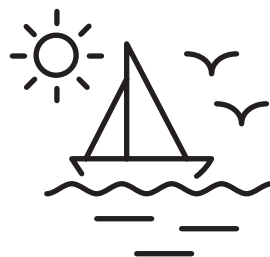
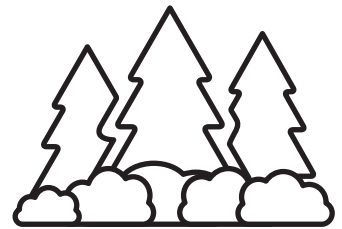
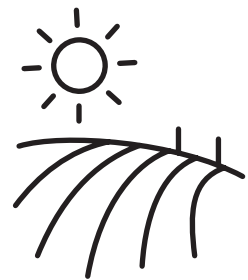
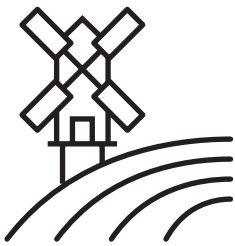
**“JP led the way until
you were retrieved!”**



JP keeps watch every day,
to keep you safe as you work, learn and play!



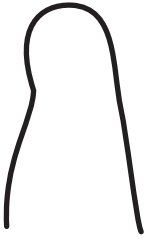
"Thanks Super Seal
for helping us see,
in places where people
can't actually be!"



ACTIVITY: DRAW A SEAL!

Use the step-by-step guide below to draw a seal.

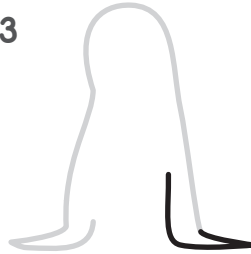
1



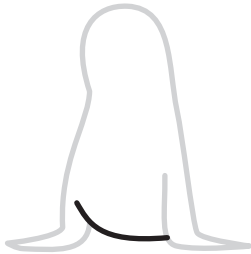
2



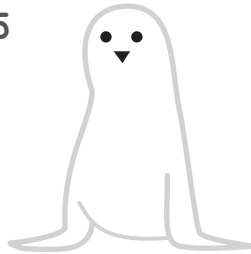
3



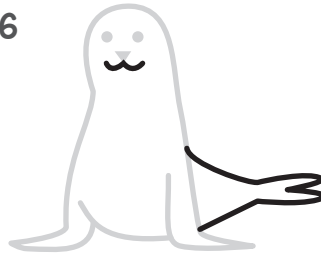
4



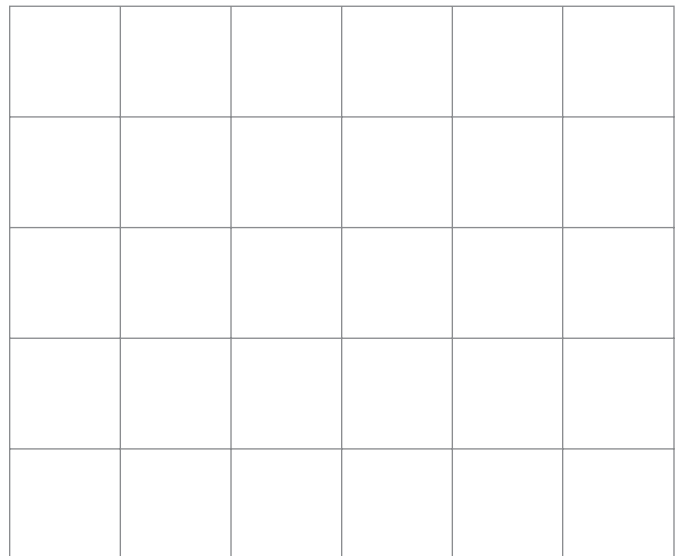
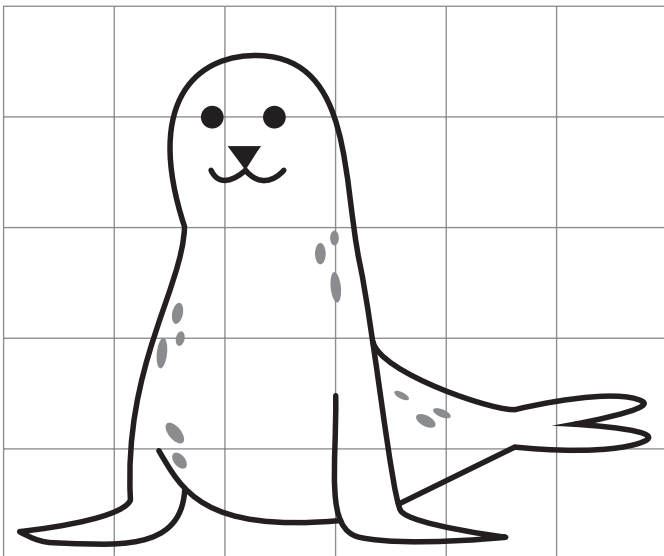
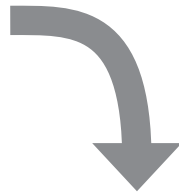
5



6



Use the grid to
help you copy
the drawing!



ACTIVITY: WORD SEARCH!

FIND the word in the puzzle.

Words can go in any direction.

Words can share letters as they cross over each other.

A	L	A	N	H	B	I	B	K	E	O	V	Q	I	C
C	S	I	N	J	D	E	I	B	C	R	E	V	D	W
C	A	N	R	N	W	K	H	E	H	G	I	Y	O	M
R	D	V	S	M	A	D	A	H	N	E	A	F	O	F
S	Y	K	V	G	D	N	Y	C	F	K	S	S	F	R
W	Q	G	I	F	Q	M	B	D	V	D	N	M	T	B
Y	U	F	O	O	C	H	X	F	F	U	P	O	L	U
U	Z	C	A	N	E	W	U	A	K	W	W	K	V	M
X	E	K	Y	L	G	L	I	R	A	I	R	E	Z	W
M	U	O	I	T	I	D	E	I	R	V	U	O	V	R
T	O	R	N	A	D	O	K	G	G	I	L	H	W	Z
J	P	N	O	J	M	W	N	W	W	H	C	M	N	H
I	X	V	R	R	Y	S	W	K	C	H	X	A	J	W
J	I	W	O	N	S	P	C	D	I	V	U	W	N	Y
Z	M	M	J	Y	G	E	H	I	V	B	T	L	B	E

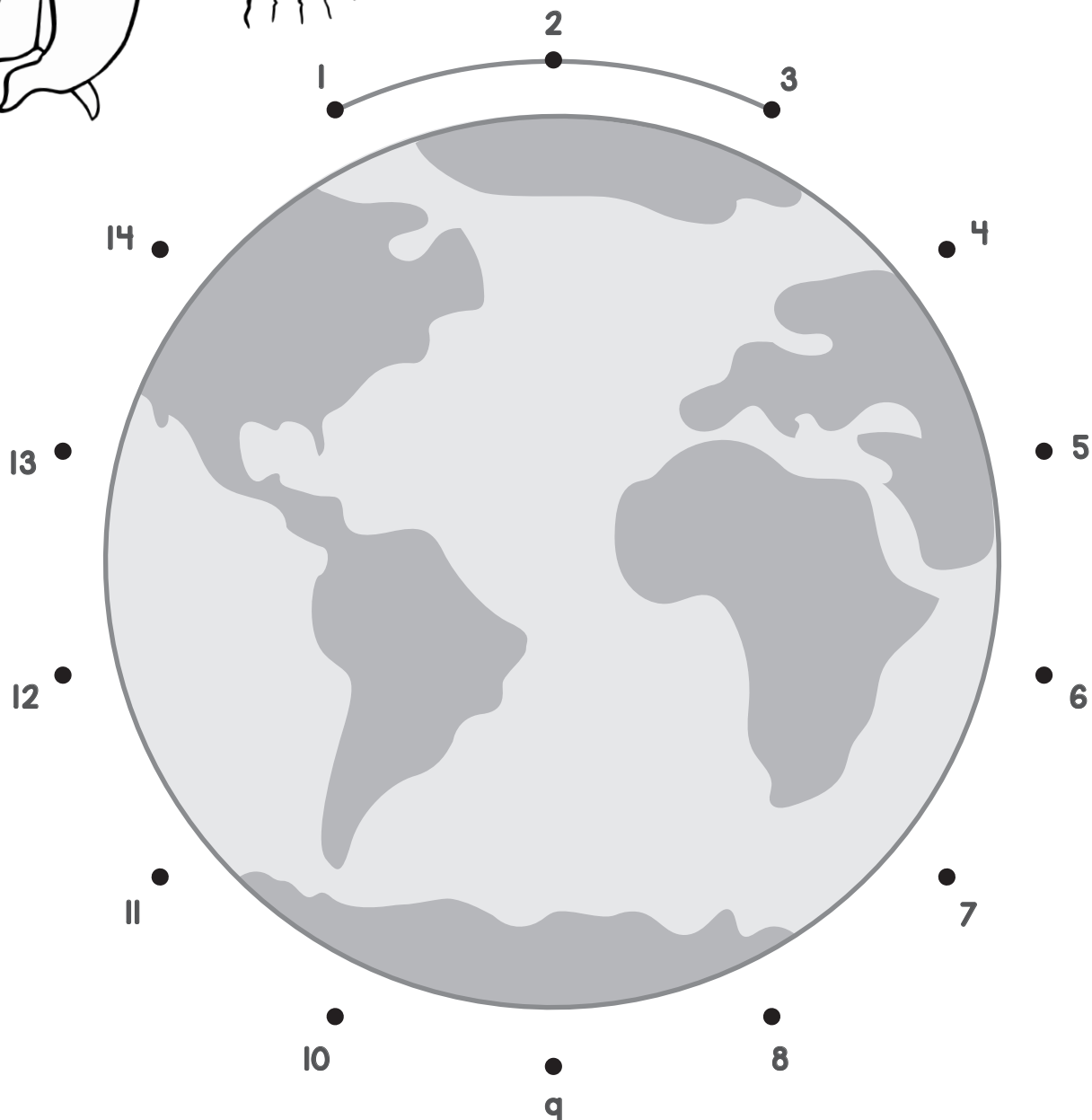
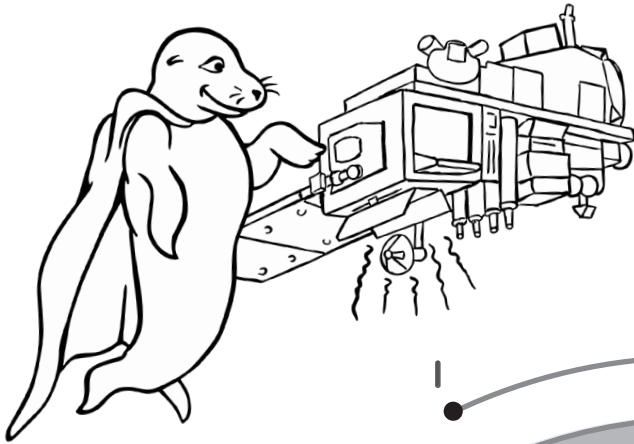
AIR
HURRICANE
SMOKE

FIRE
OCEAN
SNOW

FOOD
RAIN
TORNADO

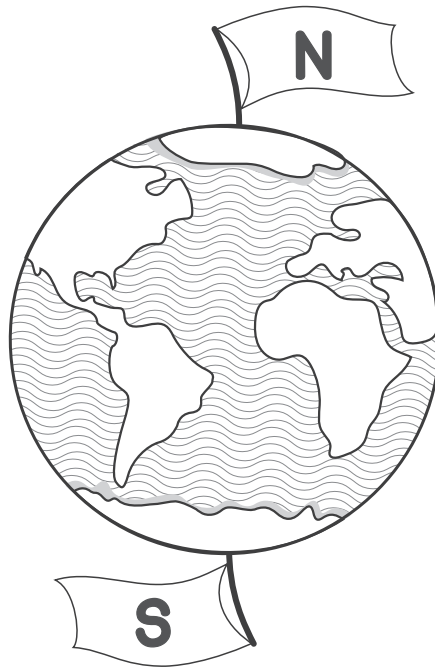
ACTIVITY: CONNECT THE DOTS!

CONNECT the dots to finish the path for JP the Super Seal and the JPSS satellite as they go around the Earth.

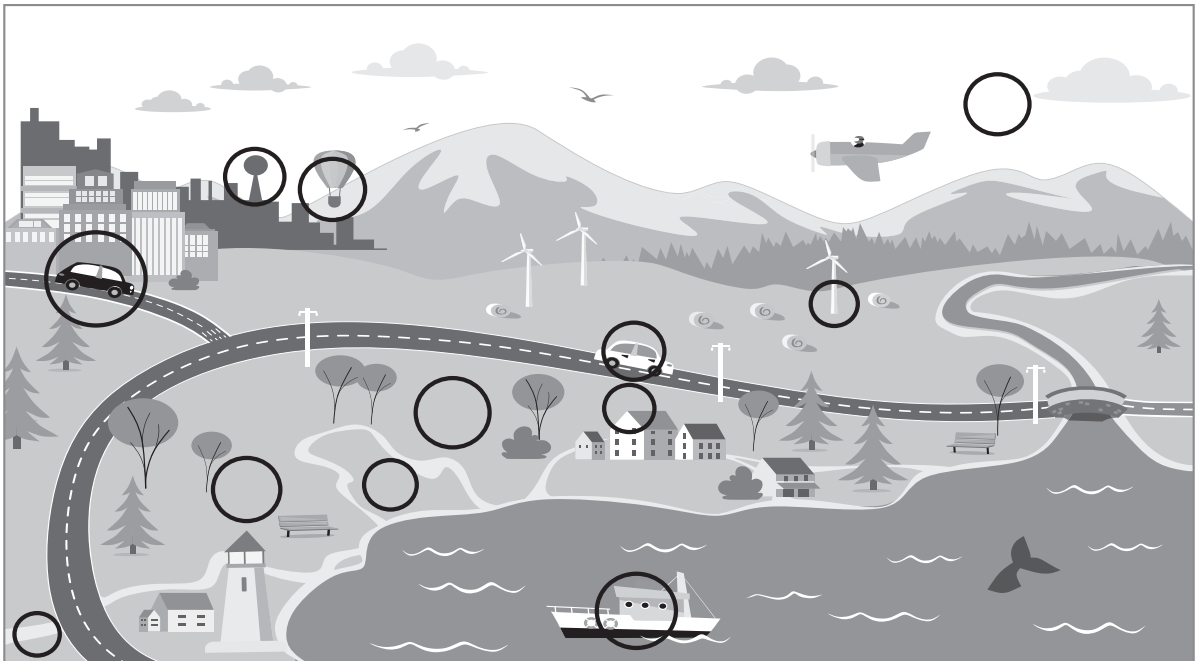


ANSWER KEY

Page 3

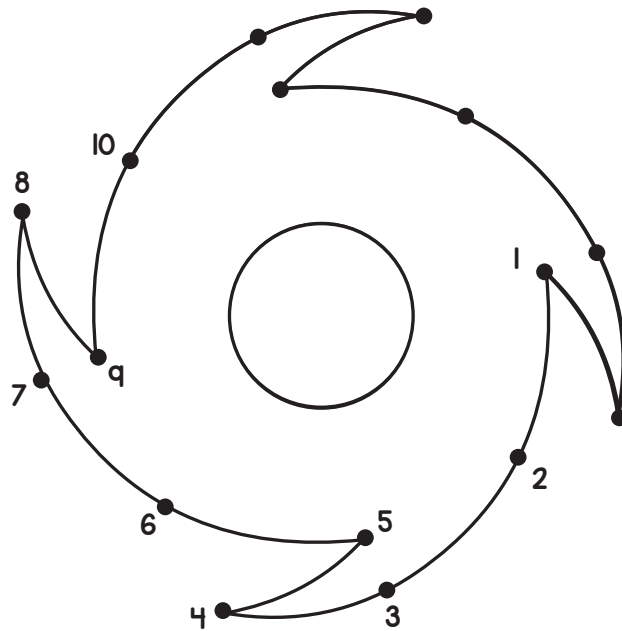


Page 6

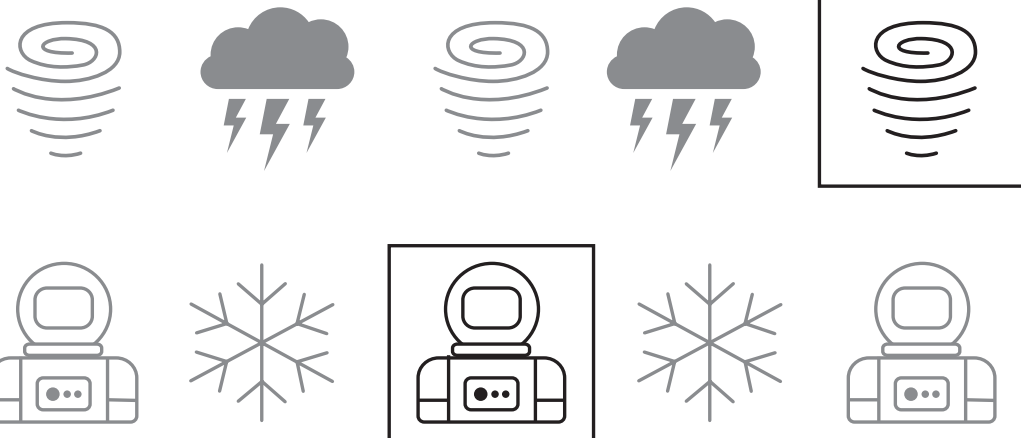


ANSWER KEY

Page I3

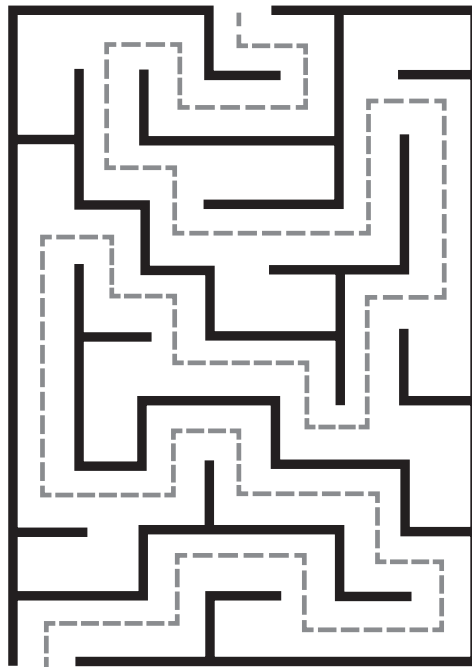


Page I6



ANSWER KEY

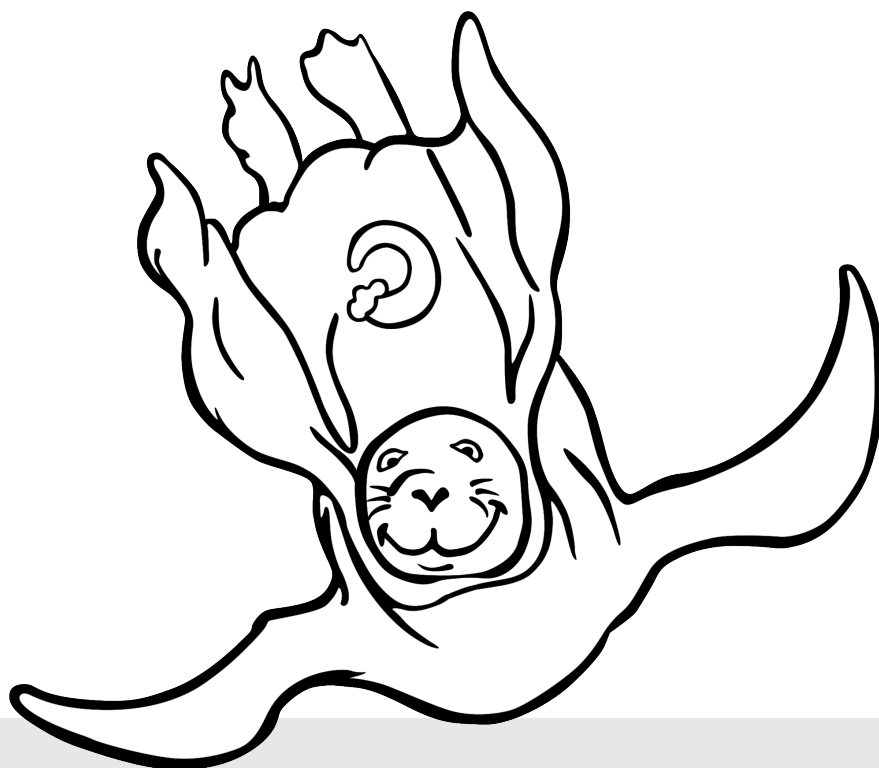
Page 17



Page 23

A 15x15 grid of letters with a crossword puzzle solution highlighted. The solution consists of the words 'TORNADO', 'WONS', and 'EARTHQUAKE'.

A	L	A	N	H	B	I	B	K	E	O	V	Q	I	C
C	S	I	N	J	D	E	I	B	C	R	E	V	D	W
C	A	N	R	N	W	K	H	E	H	G	I	Y	O	M
R	D	V	S	M	A	D	A	H	N	E	A	F	O	F
S	Y	K	V	G	D	N	Y	C	F	K	S	S	F	R
W	Q	G	I	F	Q	M	B	D	V	D	N	M	T	B
Y	U	F	O	O	C	H	X	F	F	U	P	O	L	U
U	Z	C	A	N	E	W	U	A	K	W	W	K	V	M
X	E	K	Y	L	G	L	I	R	A	I	R	E	Z	W
M	U	O	I	T	I	D	E	I	R	V	U	O	V	R
T	O	R	N	A	D	O	K	G	G	I	L	H	W	Z
J	P	N	O	J	M	W	N	W	W	H	C	M	N	H
I	X	V	R	R	Y	S	W	K	C	H	X	A	J	W
J	I	W	O	N	S	P	C	D	I	V	U	W	N	Y
Z	M	M	J	Y	G	E	H	I	V	B	T	L	B	E



THANK YOU TO EVERYONE WHO CONTRIBUTED!

Written by: Teresa Johnson and Julie Hoover

Edited by: Michelle Birdsall and Jenny Marder-Fadoul

Illustrations by: Wes Harvey

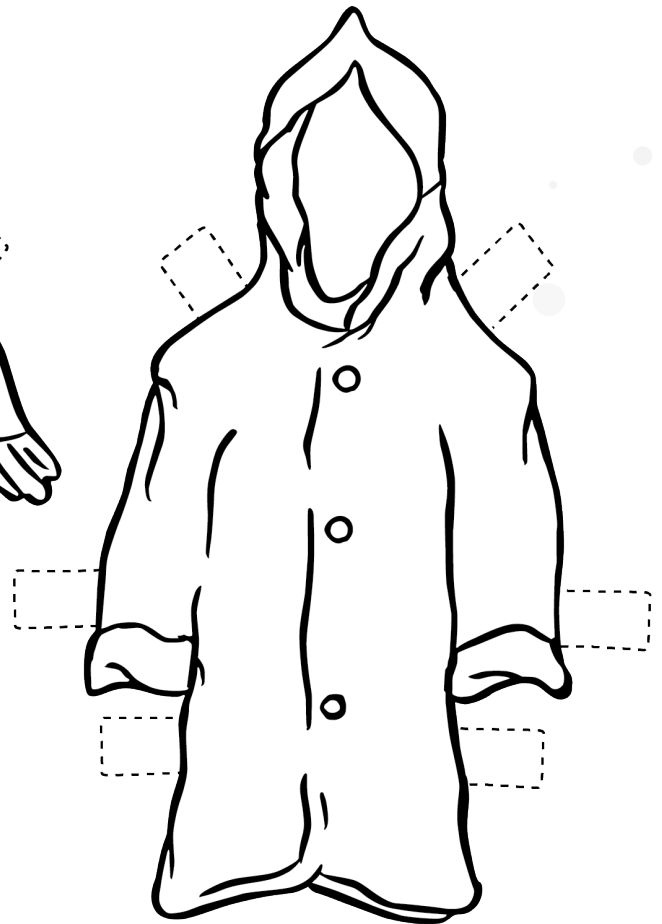
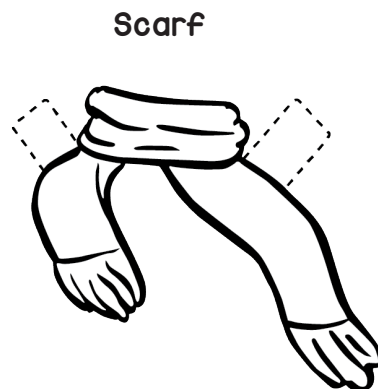
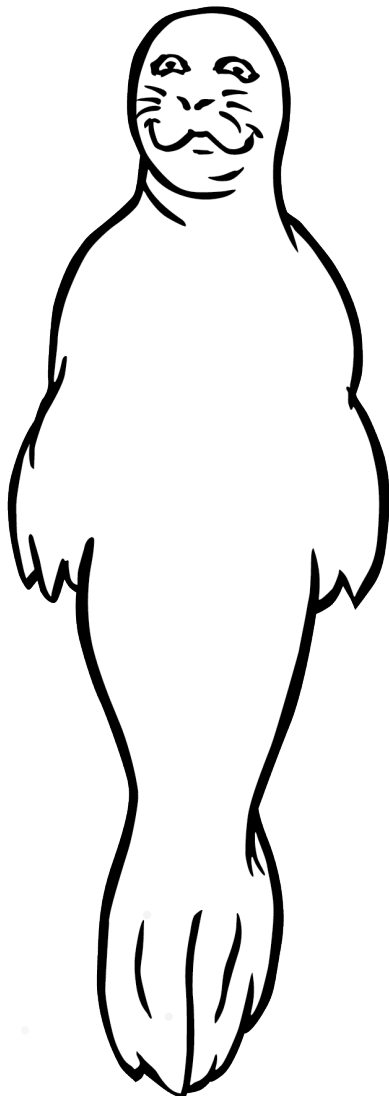
Design/Layout by: Josh Brady

Special contributions by: Vi Nguyen

Help JP the Super Seal dress for the weather!
COLOR and CUT OUT these clothes for each
season as JP travels around the world.

Instructions:

1. Color the clothing.
2. Cut out JP the Super Seal.
3. Cut out the clothing pieces following the dotted lines. Be sure to avoid cutting over the square tabs sticking out.
4. Fold tabs over the seal to dress JP up & enjoy!



Raincoat