

TECH PACK

Realistic Mock up:

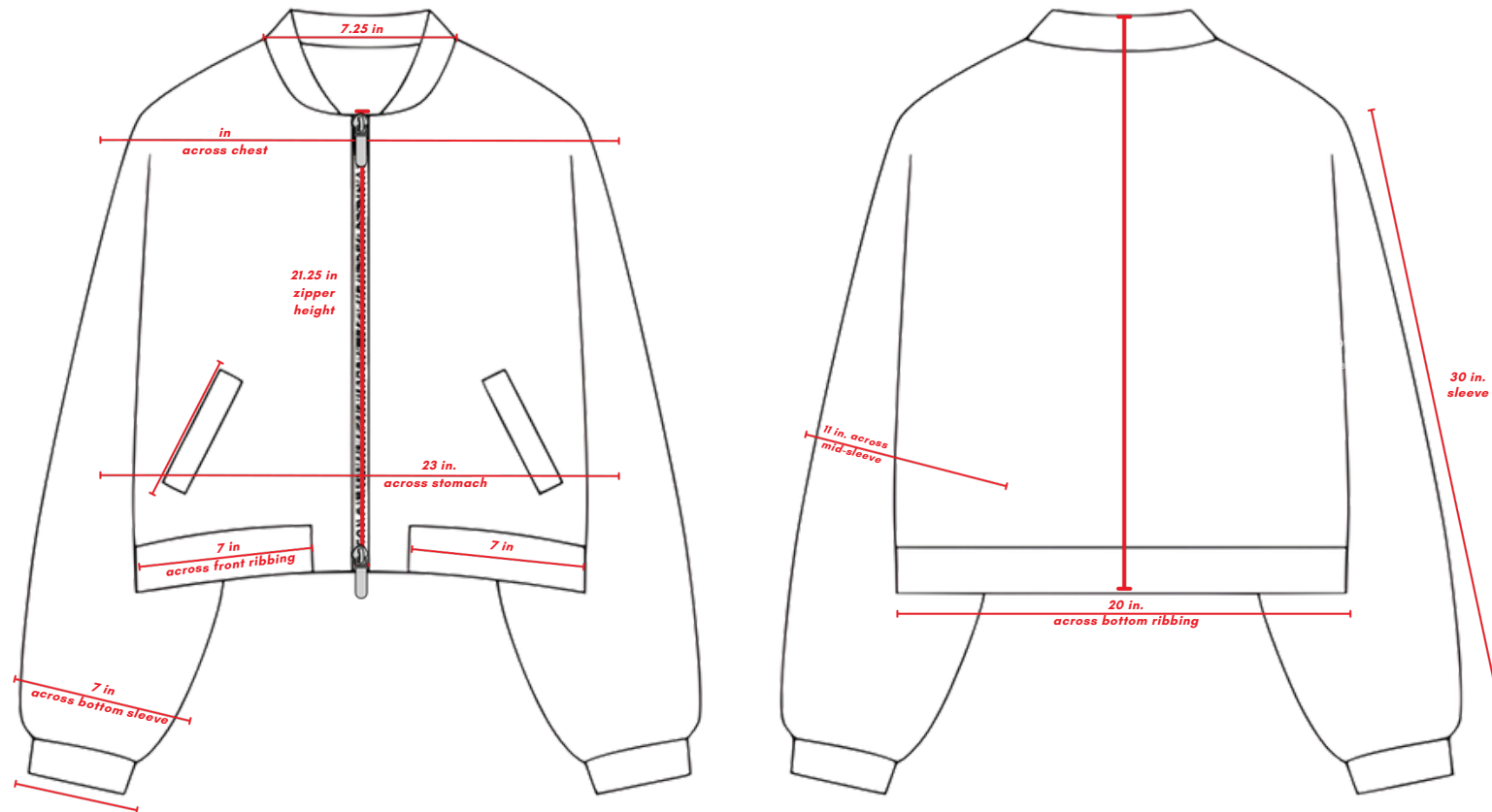


Notes:

Sublimated all over print jacket. Artwork should be aligned as shown in mock up. All ribbing on collar, waistband, and wristband should be distressed as demonstrated in the mock up. Double zipper detail

TECH PACK

Dimensions:



Print Color

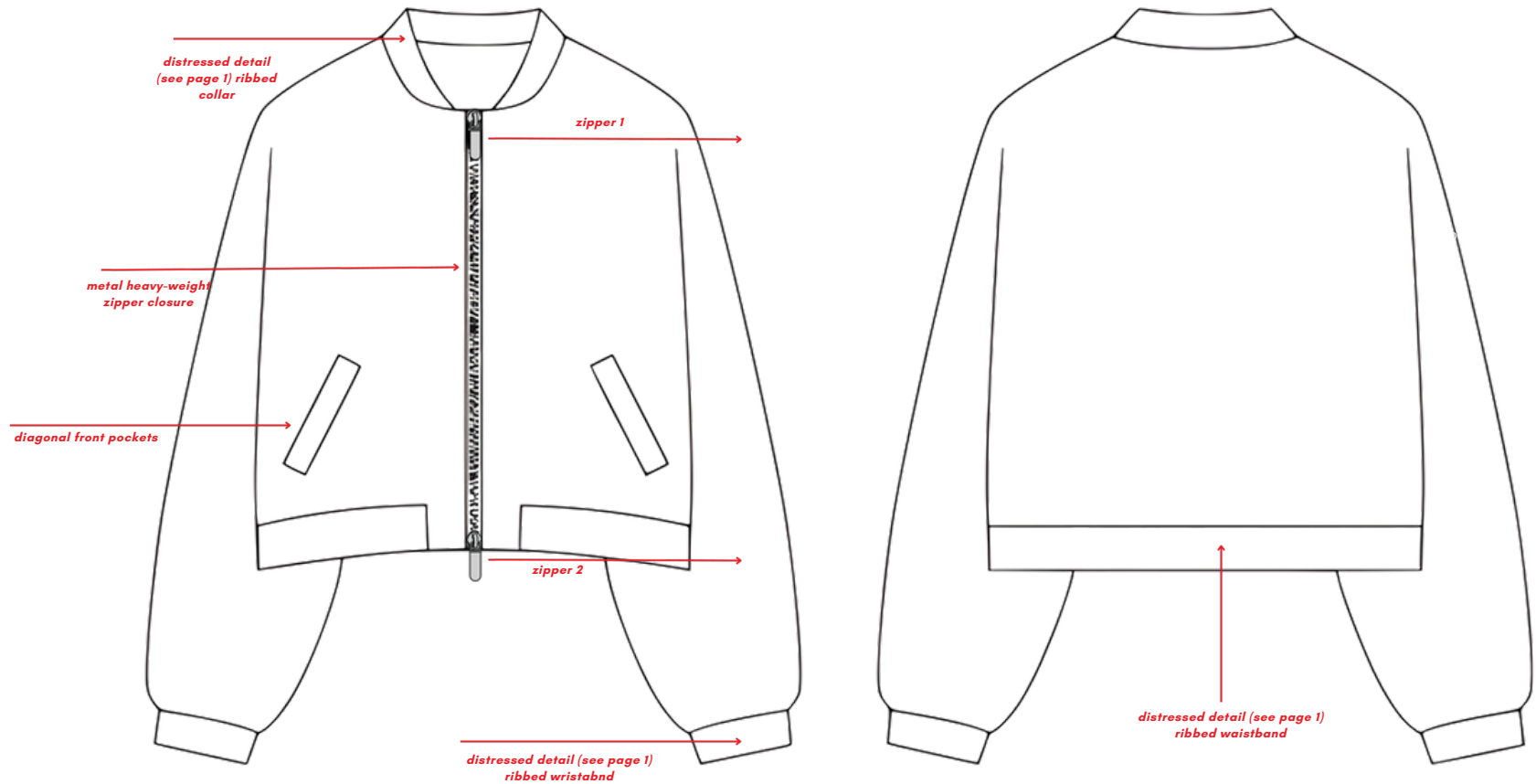


Notes:

Jacket fitment should be cropped, fabric should be sublimated with our custom all over print

TECH PACK

Design Specification:



Notes:

**double zipper, metal heavyweight zipper hardware,
distressed ribbing details**

TECH PACK

Artwork Details:



Notes:

Artwork will be applied with all-over print sublimation. Please make sure to align corresponding details as shown in illustrations and mock ups