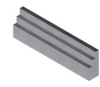
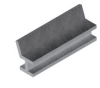


FORMAL EXERCISE

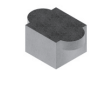
DAVID MUTILOA



FORMAL EXERCISE NR2 / SCULPTURE #070
2015
Steel, fiberglass, polyester and polyurethane
19,9 x 68,7 x 9 cm



FORMAL EXERCISE NR2 / SCULPTURE #072
2015
Steel, fiberglass, polyester and polyurethane
22 x 14,2 x 54 cm



FORMAL EXERCISE NR2 / SCULPTURE #073
2015
Steel, fiberglass, polyester and polyurethane
20,1 x 42,4 x 28 cm



FORMAL EXERCISE NR2 / SCULPTURE #076
2015
Steel, fiberglass, polyester and polyurethane
67,7 x 30 x 36,3 cm



FORMAL EXERCISE NR2 / SCULPTURE #077
2015
Steel, fiberglass, polyester and polyurethane
64 x 33,2 x 6 cm



FORMAL EXERCISE NR2 / SCULPTURE #078
2015
Steel, fiberglass, polyester and polyurethane
67 x 24,1 x 24,1 cm



FORMAL EXERCISE NR2 / SCULPTURE #079
2015
Steel, fiberglass, polyester and polyurethane
66,5 x 9,2 x 6 cm



FORMAL EXERCISE NR2 / SCULPTURE #080
2015
Steel, fiberglass, polyester and polyurethane
49,2 x 49,5 x 7 cm



FORMAL EXERCISE NR2 / SCULPTURE #081
2015
Steel, fiberglass, polyester and polyurethane
46,1 x 45,8 x 15 cm



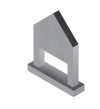
FORMAL EXERCISE NR2 / SCULPTURE #082
2015
Steel, fiberglass, polyester and polyurethane
64,2 x 20,1 x 20,1 cm



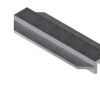
FORMAL EXERCISE NR2 / SCULPTURE #083
2015
Steel, fiberglass, polyester and polyurethane
45,3 x 33,4 x 6 cm



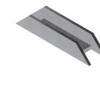
FORMAL EXERCISE NR2 / SCULPTURE #085
2015
Steel, fiberglass, polyester and polyurethane
34,9 x 69 x 8 cm



FORMAL EXERCISE NR2 / SCULPTURE #088
2015
Steel, fiberglass, polyester and polyurethane
53,5 x 43,2 x 10 cm



FORMAL EXERCISE NR2 / SCULPTURE #089
2015
Steel, fiberglass, polyester and polyurethane
9,8 x 28 x 75,2 cm



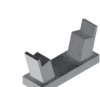
FORMAL EXERCISE NR2 / SCULPTURE #090
2015
Steel, fiberglass, polyester and polyurethane
16,2 x 67,7 x 10,9 cm



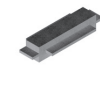
FORMAL EXERCISE NR2 / SCULPTURE #091
2015
Steel, fiberglass, polyester and polyurethane
69,1 x 15 x 15 cm



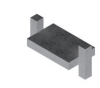
FORMAL EXERCISE NR2 / SCULPTURE #093
2015
Steel, fiberglass, polyester and polyurethane
52 x 45 x 12 cm



FORMAL EXERCISE NR2 / SCULPTURE #094
2015
Steel, fiberglass, polyester and polyurethane
27,6 x 55,3 x 18 cm



FORMAL EXERCISE NR2 / SCULPTURE #096
2015
Steel, fiberglass, polyester and polyurethane
12 x 64,1 x 24 cm



FORMAL EXERCISE NR2 / SCULPTURE #097
2015
Steel, fiberglass, polyester and polyurethane
24,4 x 50,3 x 24 cm



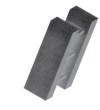
FORMAL EXERCISE NR2 / SCULPTURE #099
2015
Steel, fiberglass, polyester and polyurethane
48,5 x 48,5 x 7,1 cm



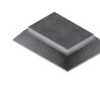
FORMAL EXERCISE NR2 / SCULPTURE #101
2015
Steel, fiberglass, polyester and polyurethane
47,8 x 48,8 x 8 cm



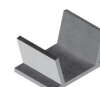
FORMAL EXERCISE NR2 / SCULPTURE #102
2015
Steel, fiberglass, polyester and polyurethane
44,5 x 60 x 8 cm



FORMAL EXERCISE NR2 / SCULPTURE #103
2015
Steel, fiberglass, polyester and polyurethane
46 x 53 x 20 cm



FORMAL EXERCISE NR2 / SCULPTURE #104
2015
Steel, fiberglass, polyester and polyurethane
12 x 50 x 38,2 cm



FORMAL EXERCISE NR2 / SCULPTURE #105
2015
Steel, fiberglass, polyester and polyurethane
25,2 x 49,5 x 32 cm



ETTORE SOTTASS / FORMAL EXERCISE NR2
1978-1980
Original catalogue
29,7 x 21 cm

SALA PROJECT

30.07.2015 - 20.09.2015

BLUEPROJECT
FOUNDATION

FORMAL EXERCISE

DAVID MUTILOA

La Blueproject Foundation presenta Formal Exercise, la tercera exposició del programa de residències 2015 a càrrec de David Mutiloa. La proposta parteix d'una sèrie de dissenys que Ettore Sottsass esbossava originàriament en un catàleg de 1979. En ell, Sottsass reflexionava al voltant de la seva intenció de recuperar les experiències aportades pel disseny radical italià en les dècades anteriors, fer balanç d'elles i adoptar nous camps de maniobra per a l'exercici de la crítica des del camp específic del disseny. No obstant això, al final de la seva reflexió Sottsass també exposava cert dubte, la possibilitat que tot funcionés d'una manera diferent al que ell estava pressuposant.

David Mutiloa analitza el treball de Sottsass dels anys 80, com si, de manera ingènua o naïf, en lloc de reactivar aquesta capacitat crítica, hagués aconseguit justament el contrari, alimentar la pròpia maquinària econòmica amb nous objectes, textures i ornaments.

Formal Exercise presenta una sèrie d'objectes construïts a partir d'aquests fragments. A través de la seva proposta, Mutiloa tracta de recuperar els dissenys de Sottsass i, sotmetent-los a un procés d'abstracció, d'una manera críptica i descontextualitzada, situar-se entre la reactivació de cert component crític del seu programa polític i la seva banalització o fracàs en la seva transformació en una sèrie de volums abstractes i estils caducs en un espai expositiu.

La Blueproject Foundation presenta Formal Exercise, la tercera exposició del programa de residències 2015 a càrrec de David Mutiloa. La proposta parteix d'una sèrie de dissenys que Ettore Sottsass esbossava originàriament en un catàleg de 1979. En ell, Sottsass reflexionava al voltant de la seva intenció de recuperar les experiències aportades pel disseny radical italià en les dècades anteriors, fer balanç d'elles i adoptar nous camps de maniobra per a l'exercici de la crítica des del camp específic del disseny. No obstant això, al final de la seva reflexió Sottsass també exposava cert dubte, la possibilitat que tot funcionés d'una manera diferent al que ell estava pressuposant.

David Mutiloa analitza el treball de Sottsass dels anys 80, com si, de manera ingènua o naïf, en lloc de reactivar aquesta capacitat crítica, hagués aconseguit justament el contrari, alimentar la pròpia maquinària econòmica amb nous objectes, textures i ornaments.

Formal Exercise presenta una sèrie d'objectes construïts a partir d'aquests fragments. A través de la seva proposta, Mutiloa tracta de recuperar els dissenys de Sottsass i, sotmetent-los a un procés d'abstracció, d'una manera críptica i descontextualitzada, situar-se entre la reactivació de cert component crític del seu programa polític i la seva banalització o fracàs en la seva transformació en una sèrie de volums abstractes i estils caducs en un espai expositiu.

The Blueproject Foundation presents Formal Exercise, the third exhibition of the call for artists 2015, by David Mutiloa. The proposal builds on a series of designs that Ettore Sottsass originally outlined in a catalogue in 1979. In it, Sottsass was thinking about his intention to retake the experiences provided by the Italian radical design of the previous decades, to get stock of them and explore new ways for the criticism from the specific field of design. However, at the end of his reflection, Sottsass also exposed some doubt, the possibility that everything would work in a different way that he was assuming.

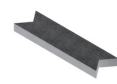
David Mutiloa analyzed the work of Sottsass on the 80's, as if, naively, instead of reactivating this critical capacity, he had achieved just the opposite, feeding the economical machine itself with new objects, textures and ornaments.

Formal Exercise presents a series of objects constructed from these fragments. Through his proposal, Mutiloa tries to retrieve Sottsass designs and, by subjecting them to a process of abstraction in a cryptic and decontextualized way, to put himself between the reactivation of a critical component of his political program and his trivialization or failure in its transformation, in a series of abstract volumes and outdated styles in an exhibition space.time they occupy all possible positions, all the halves separated; always having one more half to occupy.

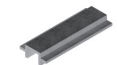


FORMAL EXERCISE

DAVID MUTILOA



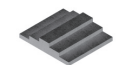
FORMAL EXERCISE NR2 / SCULPTURE #001
2014
Steel, fiberglass, polyester and polyurethane
6 x 75,5 x 20 cm



FORMAL EXERCISE NR2 / SCULPTURE #002
2014
Steel, fiberglass, polyester and polyurethane
10 x 24 x 60,5 cm



FORMAL EXERCISE NR2 / SCULPTURE #003
2014
Steel, fiberglass, polyester and polyurethane
64 x 33 x 35 cm



FORMAL EXERCISE NR2 / SCULPTURE #004
2014
Steel, fiberglass, polyester and polyurethane
9 x 45 x 40 cm



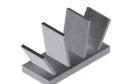
FORMAL EXERCISE NR2 / SCULPTURE #005
2014
Steel, fiberglass, polyester and polyurethane
68 x 40 x 8,5 cm



FORMAL EXERCISE NR2 / SCULPTURE #006
2014
Steel, fiberglass, polyester and polyurethane
81 x 11,5 x 11,5 cm



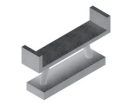
FORMAL EXERCISE NR2 / SCULPTURE #007
2014
Steel, fiberglass, polyester and polyurethane
60 x 20,5 x 12 cm



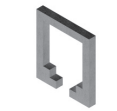
FORMAL EXERCISE NR2 / SCULPTURE #008
2014
Steel, fiberglass, polyester and polyurethane
32,5 x 62,5 x 25 cm



FORMAL EXERCISE NR2 / SCULPTURE #009
2014
Steel, fiberglass, polyester and polyurethane
58 x 38,5 x 12 cm



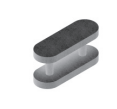
FORMAL EXERCISE NR2 / SCULPTURE #010
2015
Steel, fiberglass, polyester and polyurethane
36,9 x 65,5 x 16 cm



FORMAL EXERCISE NR2 / SCULPTURE #011
2015
Steel, fiberglass, polyester and polyurethane
54,2 x 47,7 x 6 cm



FORMAL EXERCISE NR2 / SCULPTURE #012
2015
Steel, fiberglass, polyester and polyurethane
69,4 x 23,5 x 17,8 cm



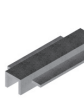
FORMAL EXERCISE NR2 / SCULPTURE #013
2015
Steel, fiberglass, polyester and polyurethane
24,8 x 52,3 x 18 cm



FORMAL EXERCISE NR2 / SCULPTURE #015
2015
Steel, fiberglass, polyester and polyurethane
37,7 x 37,4 x 28 cm



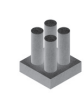
FORMAL EXERCISE NR2 / SCULPTURE #016
2015
Steel, fiberglass, polyester and polyurethane
12 x 41,8 x 42,3 cm



FORMAL EXERCISE NR2 / SCULPTURE #018
2015
Steel, fiberglass, polyester and polyurethane
12 x 30 x 68,3 cm



FORMAL EXERCISE NR2 / SCULPTURE #019
2015
Steel, fiberglass, polyester and polyurethane
62,8 x 24,1 x 26,5 cm



FORMAL EXERCISE NR2 / SCULPTURE #025
2015
Steel, fiberglass, polyester and polyurethane
33,8 x 28 x 28 cm



FORMAL EXERCISE NR2 / SCULPTURE #026
2015
Steel, fiberglass, polyester and polyurethane
48 x 47 x 16 cm



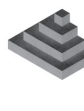
FORMAL EXERCISE NR2 / SCULPTURE #027
2015
Steel, fiberglass, polyester and polyurethane
30 x 67,7 x 19,8 cm



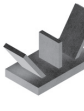
FORMAL EXERCISE NR2 / SCULPTURE #028
2015
Steel, fiberglass, polyester and polyurethane
9 x 59,7 x 23 cm



FORMAL EXERCISE NR2 / SCULPTURE #029
2015
Steel, fiberglass, polyester and polyurethane
60 x 20,1 x 15,4 cm



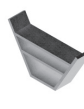
FORMAL EXERCISE NR2 / SCULPTURE #030
2015
Steel, fiberglass, polyester and polyurethane
28 x 49 x 27,8 cm



FORMAL EXERCISE NR2 / SCULPTURE #031
2015
Steel, fiberglass, polyester and polyurethane
31,4 x 71,5 x 29,8 cm



FORMAL EXERCISE NR2 / SCULPTURE #032
2015
Steel, fiberglass, polyester and polyurethane
23,6 x 59 x 27,8 cm



FORMAL EXERCISE NR2 / SCULPTURE #033
2015
Steel, fiberglass, polyester and polyurethane
37 x 60,5 x 14 cm

FORMAL EXERCISE

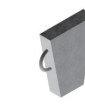
DAVID MUTILOA



FORMAL EXERCISE NR2 / SCULPTURE #034
2015
Steel, fiberglass, polyester and polyurethane
74,2 x 28,7 x 6 cm



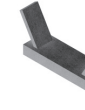
FORMAL EXERCISE NR2 / SCULPTURE #035
2015
Steel, fiberglass, polyester and polyurethane
33 x 59,9 x 16 cm



FORMAL EXERCISE NR2 / SCULPTURE #036
2015
Steel, fiberglass, polyester and polyurethane
50 x 52 x 10,3 cm



FORMAL EXERCISE NR2 / SCULPTURE #037
2015
Steel, fiberglass, polyester and polyurethane
15 x 48,1 x 33,6 cm



FORMAL EXERCISE NR2 / SCULPTURE #038
2015
Steel, fiberglass, polyester and polyurethane
31,3 x 73,7 x 21,8 cm



FORMAL EXERCISE NR2 / SCULPTURE #039
2015
Steel, fiberglass, polyester and polyurethane
60,5 x 36,2 x 30,4 cm



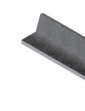
FORMAL EXERCISE NR2 / SCULPTURE #040
2015
Steel, fiberglass, polyester and polyurethane
30,4 x 48,3 x 19,9 cm



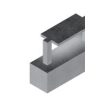
FORMAL EXERCISE NR2 / SCULPTURE #041
2015
Steel, fiberglass, polyester and polyurethane
59 x 24,2 x 14 cm



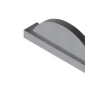
FORMAL EXERCISE NR2 / SCULPTURE #043
2015
Steel, fiberglass, polyester and polyurethane
66 x 15,9 x 15,9 cm



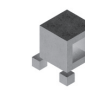
FORMAL EXERCISE NR2 / SCULPTURE #044
2015
Steel, fiberglass, polyester and polyurethane
14,1 x 18,4 x 62,4 cm



FORMAL EXERCISE NR2 / SCULPTURE #046
2015
Steel, fiberglass, polyester and polyurethane
34 x 51,9 x 16 cm



FORMAL EXERCISE NR2 / SCULPTURE #047
2015
Steel, fiberglass, polyester and polyurethane
23,1 x 67,9 x 12 cm



FORMAL EXERCISE NR2 / SCULPTURE #048
2015
Steel, fiberglass, polyester and polyurethane
31,5 x 31 x 27 cm



FORMAL EXERCISE NR2 / SCULPTURE #049
2015
Steel, fiberglass, polyester and polyurethane
68,6 x 19,8 x 19,8 cm



FORMAL EXERCISE NR2 / SCULPTURE #050
2015
Steel, fiberglass, polyester and polyurethane
75,3 x 18 x 18 cm



FORMAL EXERCISE NR2 / SCULPTURE #051
2015
Steel, fiberglass, polyester and polyurethane
47,1 x 59,3 x 7 cm



FORMAL EXERCISE NR2 / SCULPTURE #052
2015
Steel, fiberglass, polyester and polyurethane
74,5 x 19,9 x 20,1 cm



FORMAL EXERCISE NR2 / SCULPTURE #053
2015
Steel, fiberglass, polyester and polyurethane
45 x 63 x 9 cm



FORMAL EXERCISE NR2 / SCULPTURE #054
2015
Steel, fiberglass, polyester and polyurethane
7 x 64 x 21 cm



FORMAL EXERCISE NR2 / SCULPTURE #056
2015
Steel, fiberglass, polyester and polyurethane
39 x 58 x 10,2 cm



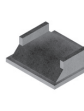
FORMAL EXERCISE NR2 / SCULPTURE #057
2015
Steel, fiberglass, polyester and polyurethane
74,4 x 38 x 16 cm



FORMAL EXERCISE NR2 / SCULPTURE #059
2015
Steel, fiberglass, polyester and polyurethane
5 x 78,8 x 18 cm



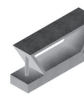
FORMAL EXERCISE NR2 / SCULPTURE #061
2015
Steel, fiberglass, polyester and polyurethane
60,2 x 37,6 x 5 cm



FORMAL EXERCISE NR2 / SCULPTURE #064
2015
Steel, fiberglass, polyester and polyurethane
18,2 x 43,9 x 43,9 cm



FORMAL EXERCISE NR2 / SCULPTURE #065
2015
Steel, fiberglass, polyester and polyurethane
58,2 x 36,1 x 18 cm



FORMAL EXERCISE NR2 / SCULPTURE #067
2015
Steel, fiberglass, polyester and polyurethane
26,8 x 61,2 x 14 cm