



Preserving Penelope Ziedler's Legacy

Taylor Baker, Charlotte Eagle, Janna Singer-Baefsky, Joey Vincennie
INFO 661 - Art Documentation, Fall 2019
Professors Cristina Pattuelli, Farris Wahbeh
11 December 2019

Pratt

Project Overview

PREPARE

Prepare the Penelope Ziedler Estate for the impending sales and donations of Ziedler's art and archival materials to museums, galleries and other institutional bodies.

ASSESS

Assess and identify the needs of the Ziedler family's needs through the application theoretical and practical knowledge to put our plan into action.

DOCUMENT

Document, research and digitize all of her materials to properly preserve her legacy.

What did Ziedler leave behind?

- Artistic practice was methodical in nature, relying heavily on studies and sketches
- In her Milwaukee studio are the following:
 - 100 sculptures
 - Sketches
 - Sketchbooks
 - Drawings
 - Printed materials



Breach, Alison Sarr

Project Methodology

Defining the scope
of the collection



Object
Identification and
Documentation




Cataloging,
Research and
Preservation



Documentation as Legacy-Building

RESULTS
(17/58)

Editing Drawing:
who eats with a caged mouth?
(DR.1976.5)



Created
2 months ago by Taylor Baker
Last changed
1 month ago by Taylor Baker

BASIC INFO

NOTES

MEDIA

HISTORY AND ADMIN

SUMMARY

LOG

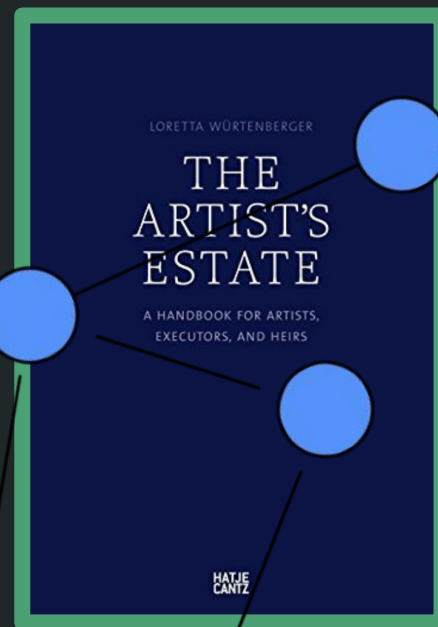
Save Cancel Delete

Registration Number
DR.1976.5

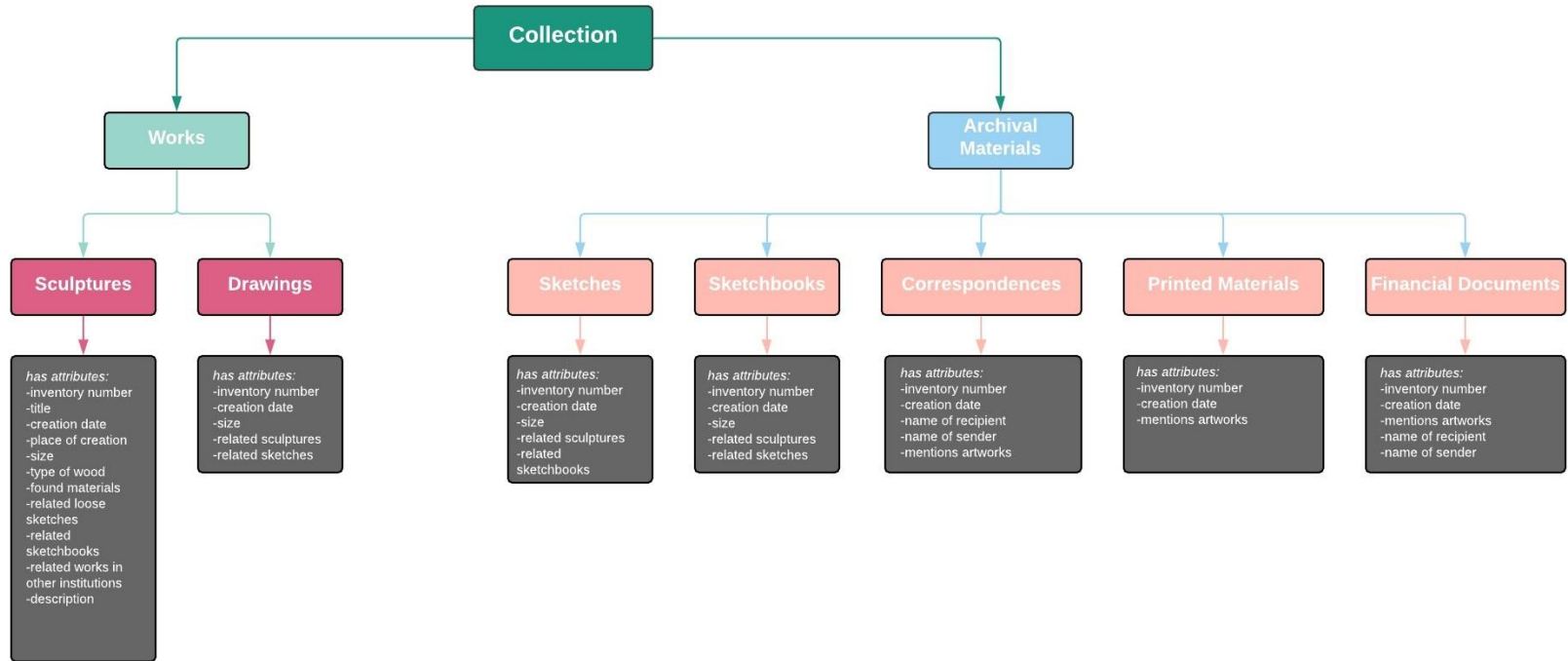
Artist
Ziedler, Penelope (American sculptor, 15)
Add Artist

Other Identifiers
Number Type Notes
Add Other Identifiers

Title
who eats with a caged mouth?



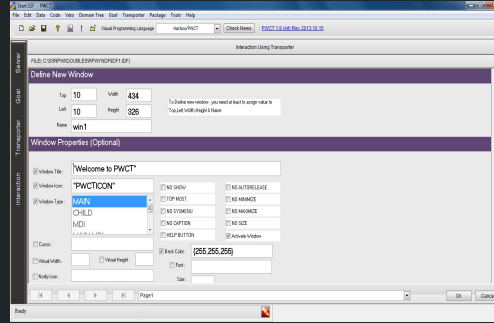
Concept Map



Documentation Strategy: Crosswalk

2	Collective Access	LIDO	DACS	Expected Value	CCO	Expected Value	Local Guidelines
3	ID Number	(recordWrap)	Local Identifier (2.1.3)				
4	Artist	(eventWrap)	Name of Creator (General) (2.6.4)	ULAN	Creator (2.1.2.1.1)	ULAN	ex. Ziedler, Penelope (1942-2019)
5	Other Identifiers						
6	Title	(titleWrap)	Nature of Archival Unit (2.3.19)		Title (1.2.2.1)		
7	Alternative Title	(titleWrap)			Alternate Title (1.2.2.3)		
8	Date	(subjectWrap)	Date (2.4)	EDTF	Date (4.1.2.1.2)	EDTF	
9	Description				Description (8.1.1)		Concise sentences
10	Elements/Component Notes	(objectDescriptionWrap)					
11	Material		see scope and content/series		Materials and techniques (3.1.2.1.2)	AAT	
12	Medium	(objectClassificationWrap)			Materials and techniques (3.1.2.1.2)	AAT	
13	Dimensions	(objectMeasurementsWrap)			Measurements (3.2.1.1)	NIST	
14	Dimension Type	(objectMeasurementsWrap)					overall' applicable to 'overall' for sculpture 'crate dimensions' and sketches
15	Series	(recordWrap)					Link all related artworks
16	Inscription(s)	(inscriptionsWrap)			3.2.4.1, 3.2.4.2		signed and dated artworks
17	Credit Line	(recordWrap)	Name Segment (2.3.4)				Enter: 'From the Penelope Ziedler Collection'
18	Related Artworks	(relatedWorksWrapper)			Titles for Wholes and Parts (1.2.2.2.6)		Link to series.
19	Related Archival Items	(relatedWorksWrapper)	Systems of Arrangement (3.2)				
20	Related Publications	(relatedWorksWrapper)					
21	Publication History						

Documentation Strategy: Workflow

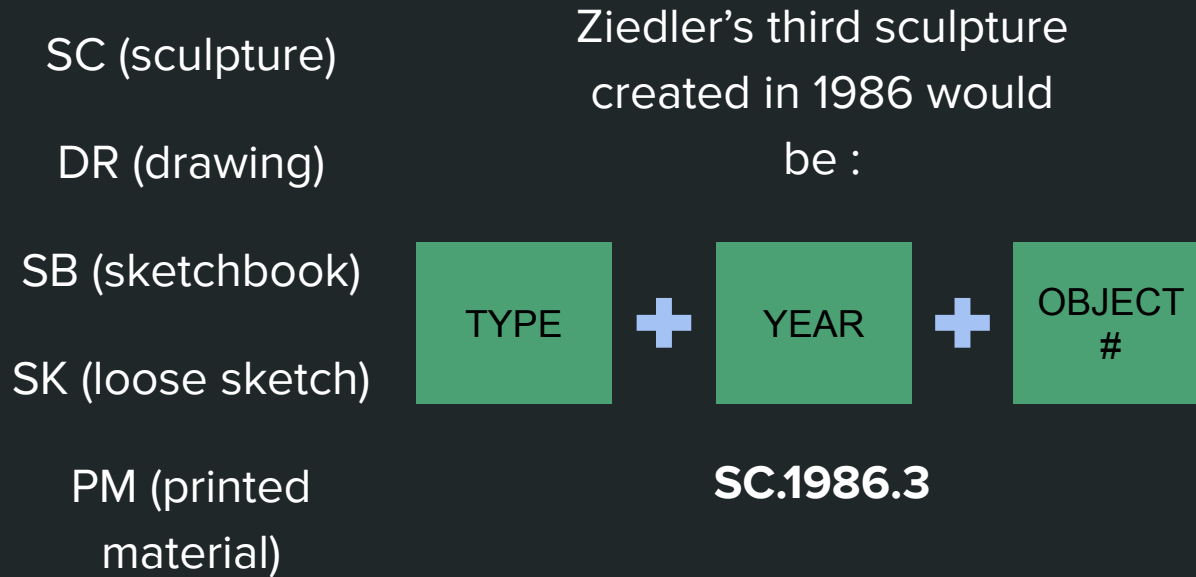


Receive objects

Catalog in Collective Access

Digitize

Object Identification Strategy




For objects with multiple parts that would be shown together we used lower case letters to represent each part – a two-part object would be a “SC.1986.3a-b”

Sample Record

← RESULTS (?/2) >

Editing Painting/Sculpture: Lilith, Dancing Queen (SC.1981.6)



Save Object type Delete

Registration Number
SC.1981.6 Object ID

Artist
Ziedler, Penelope (American sculptor, 1950-) Artist

+ Add Artist

Image

Other Identifiers

Number	Type	Notes
9866	Other Number	MoMA object number when th
	Not set	

+ Add Other Identifiers

Other collection IDs

BASIC INFO

NOTES

MEDIA

HISTORY AND ADMIN

SUMMARY

LOG

Title
Lilith, Dancing Queen Title

Digitization and Photography Strategy



Archival Materials

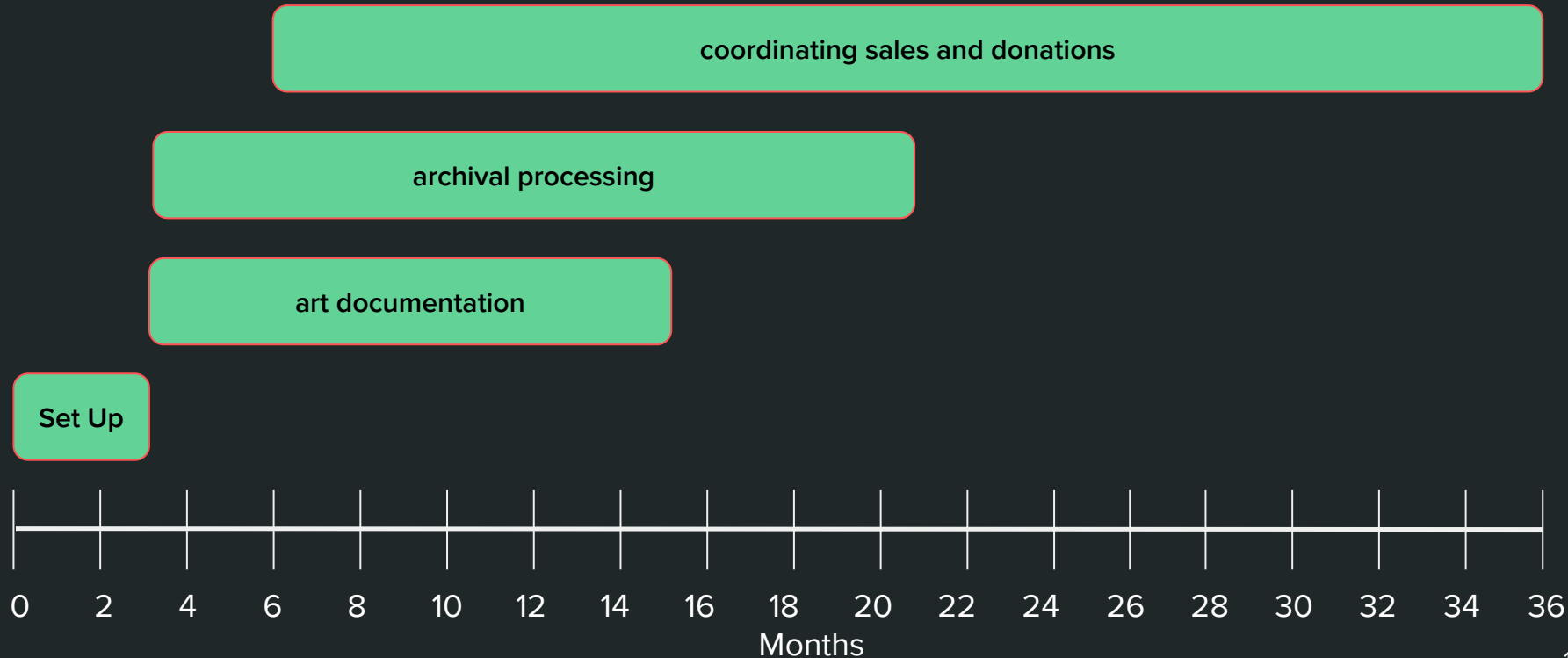


Artworks

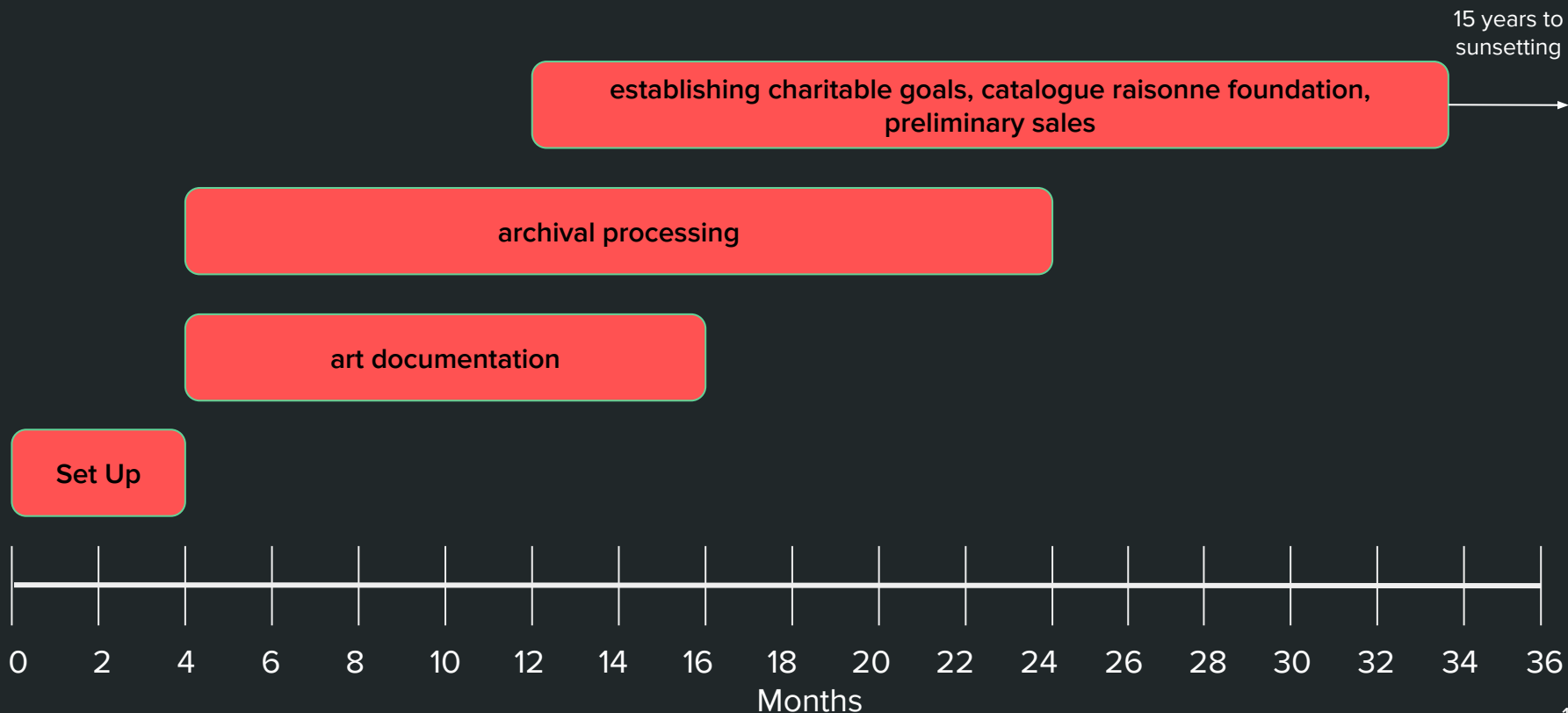
Staffing and Budget

ESTATE	FOUNDATION
<ul style="list-style-type: none">- Staff- Documentation equipment- Housing- Digital Asset Management System- Renovation to farmhouse & studio	<ul style="list-style-type: none">- Staff +- Documentation equipment- Housing- Digital Asset Management System- Renovation to farmhouse & studio- Catalogue raisonné- Cultural & educational programming

Timeline

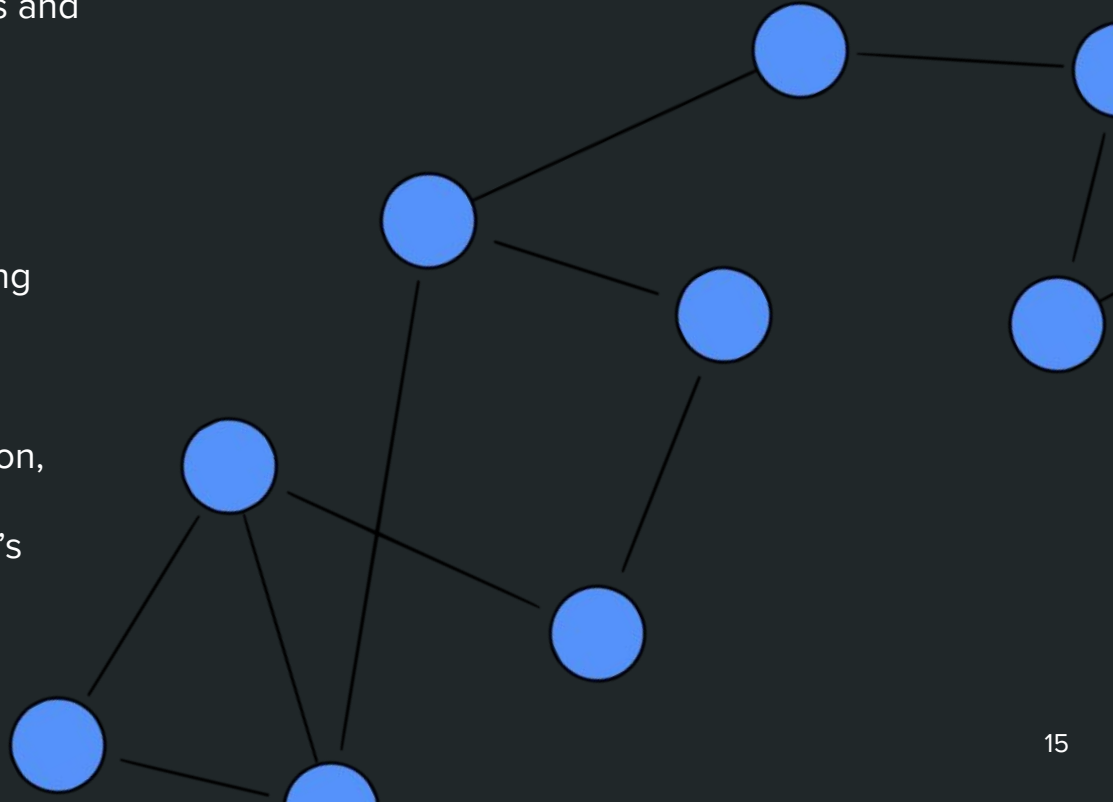


Timeline



An Enduring Legacy

- Establish her place within the networks and rich histories of twentieth century art
- New frontiers in research
- Opportunity to contribute to the growing recognition of women artists
- Documentation lends to new information, relationships and forefronts for Ziedler's growing legacy



Thank you! Questions?

Taylor Baker, Charlotte Eagle, Janna Singer-Baefsky, Joey Vincennie
INFO 661 - Art Documentation, Fall 2019
Professors Cristina Pattuelli, Farris Wahbeh
11 December 2019