

Portfolio from Academic and  
Professional Disciplines

**NOUR  
BANNOUT**

Selected Works  
Interior Design  
Furniture Design

01. PRELIMINARY DESIGN		
	01.01. RE/FORM - Work Place 01.02. MARGARET - Cafe	Renderings Custom Millwork
02. PROFESSIONAL		
	02.01. WANTED X ICFF 02.02. 77 GREENWICH AVE	Exhibition Design Residential
03. CONCEPTUAL		
	03.01. DIALOGUES - Interior Architecture of a Ruin	MFA Thesis
04. FURNITURE		
	04. 01. SØD CHAIR  04.02. POST-COLONIAL SILLA 04.03. TWIN TUBES	Furniture Design and Construction Lathe Technique Metal Work
05. RESUME		

CONTEXT



**SOFTWARE USED:** Autocad, Revit, Enscape, Photoshop, Illustrator, InDesign

**SITE:** Building 77 in the Brooklyn Navy Yard, Brooklyn, NY (Landmark building)

**MATERIALS:** Concrete, Brushed Aluminum, Douglas Fir

This project emphasizes rendering capabilities, material and palette restraints, history of site, and concept development.

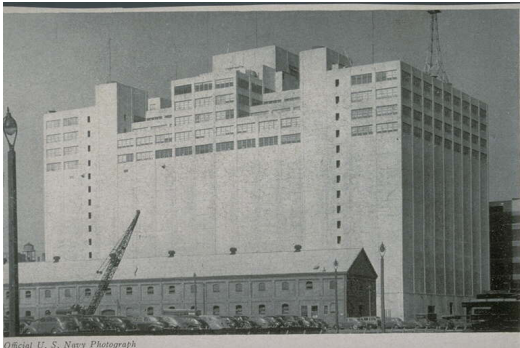
A multi-use office space proposal in the Brooklyn Navy Yard's, Building 77. Inspired by Buckingham Palace's "Red Room" and Hans Arp's "Constellations".

A satellite mobile office concept with irregular zones that loosely separate spaces into niches through typological boundaries aimed to be more dynamic and autonomous.

Considerations: Landmark building, adaptable multi-company functions and needs, program, site context and surrounding businesses and growth, taxonomy for integrated thresholds, materiality, precedent studies.

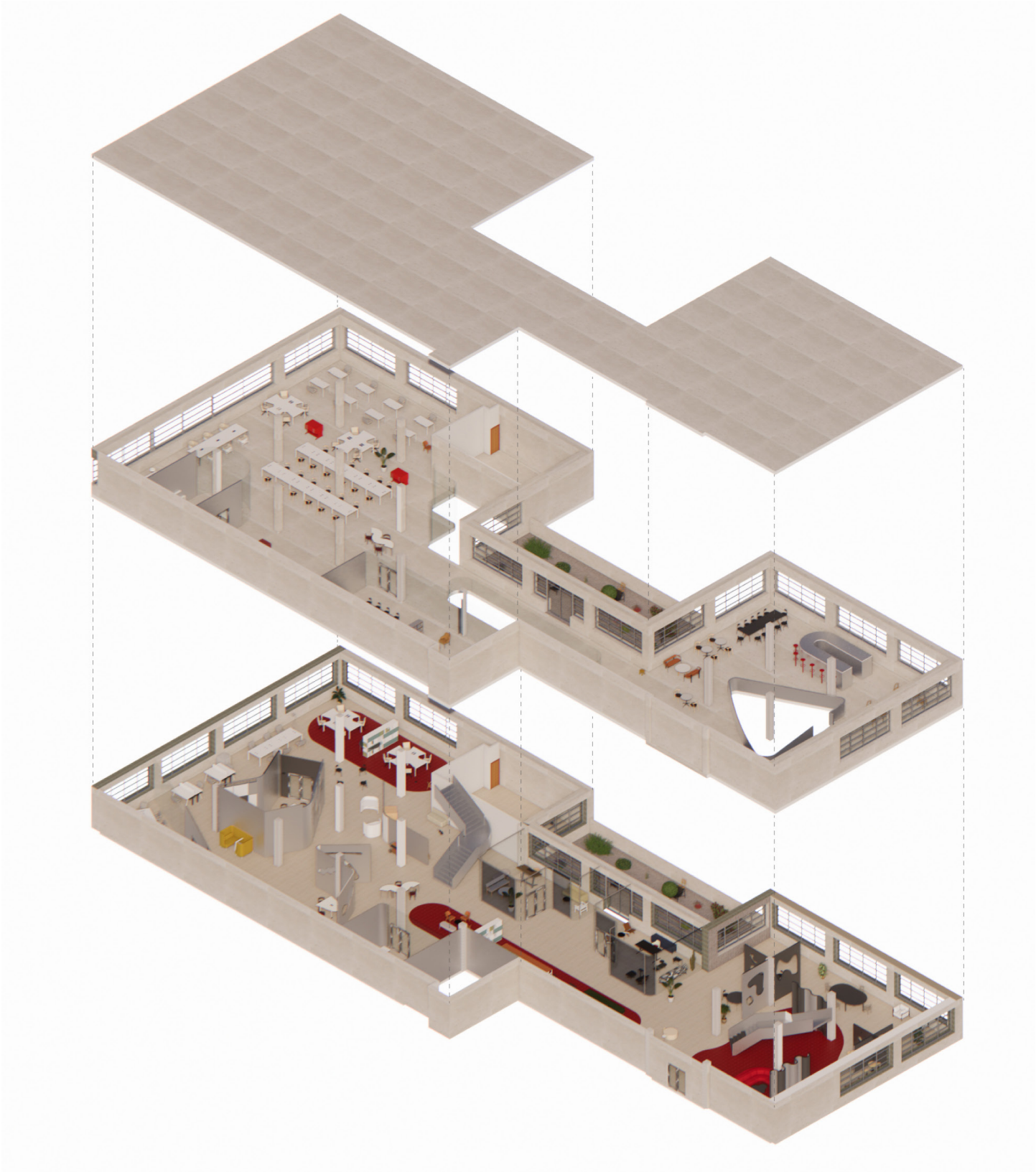


Site Map Location



Official U.S. Navy Photograph of the original Building 77 from 1948  
Source: Brooklyn Photograph and Illustration Collection

REVIT SITE MODEL



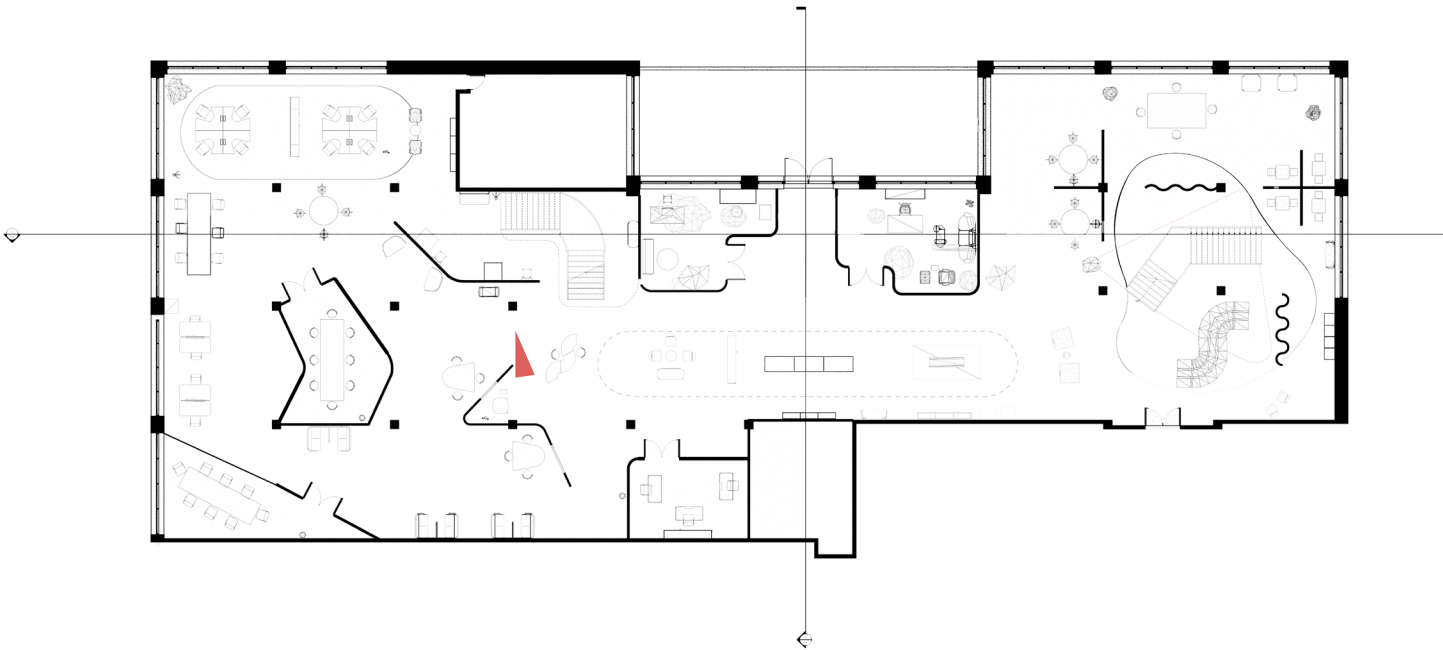
Exploded Rendered Axonometric



FLOOR PLAN + RENDERED PERSPECTIVE

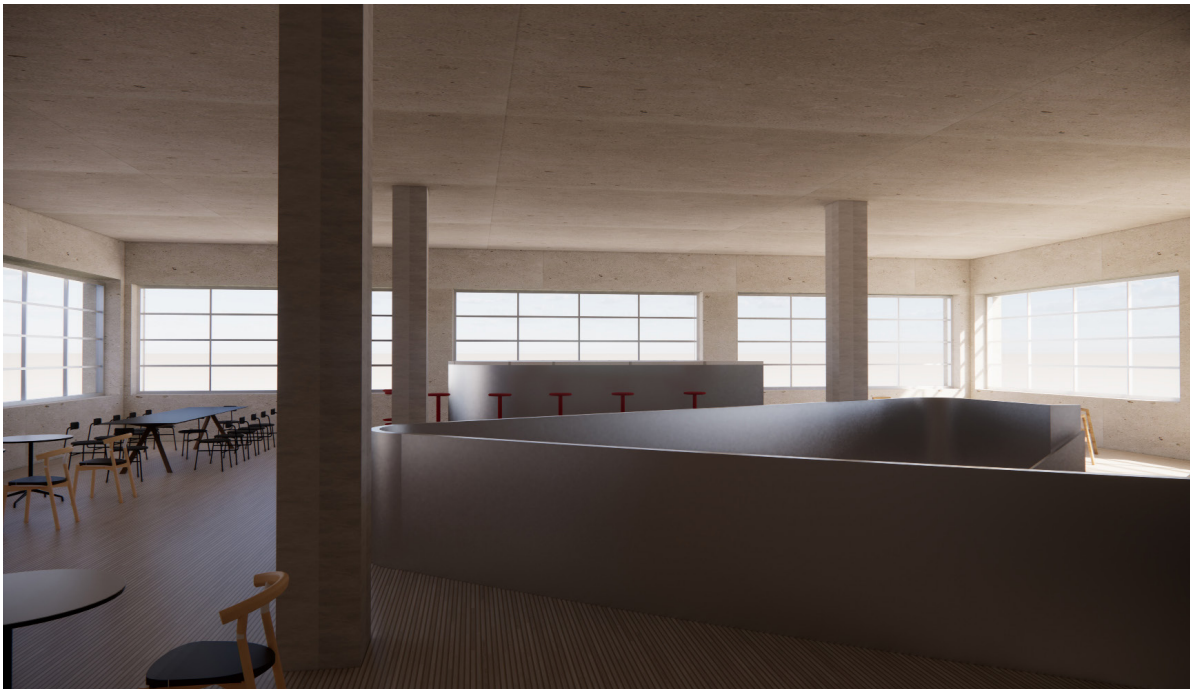


15th Floor East Staircase Rendering

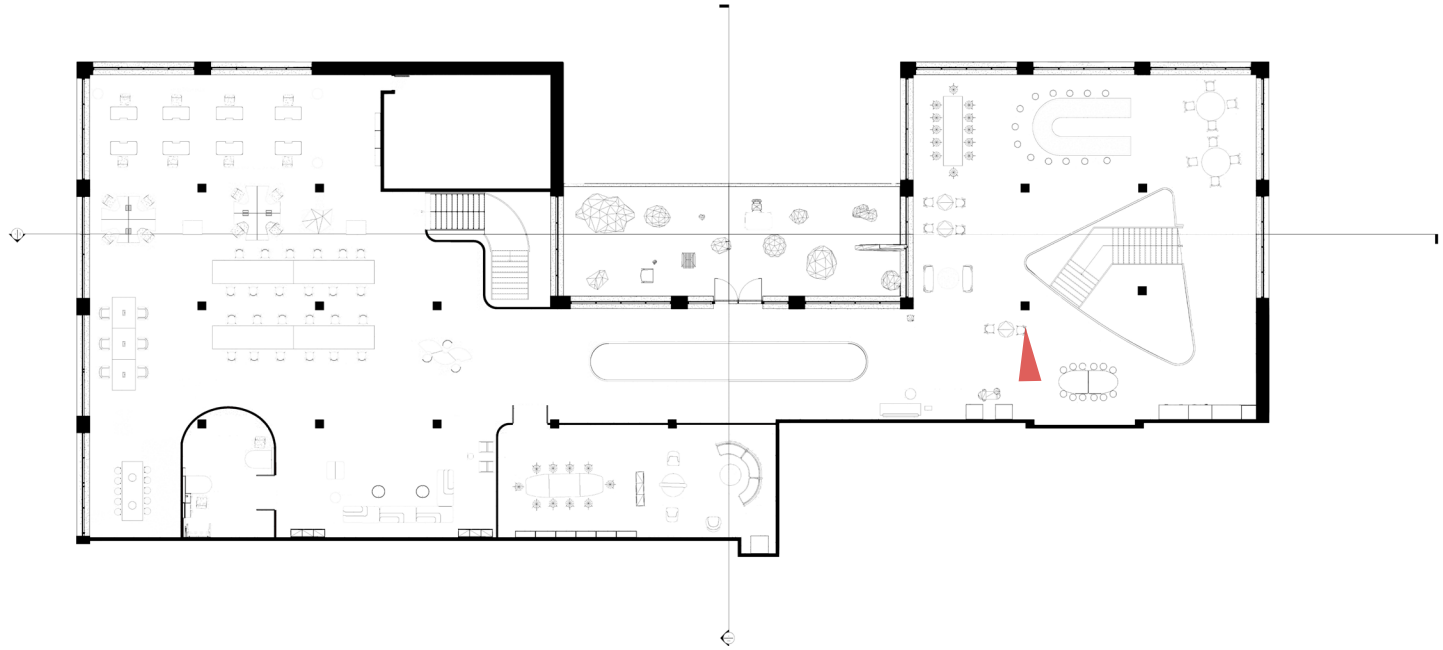


Level 15 - Floor Plan

FLOOR PLAN + RENDERED PERSPECTIVE



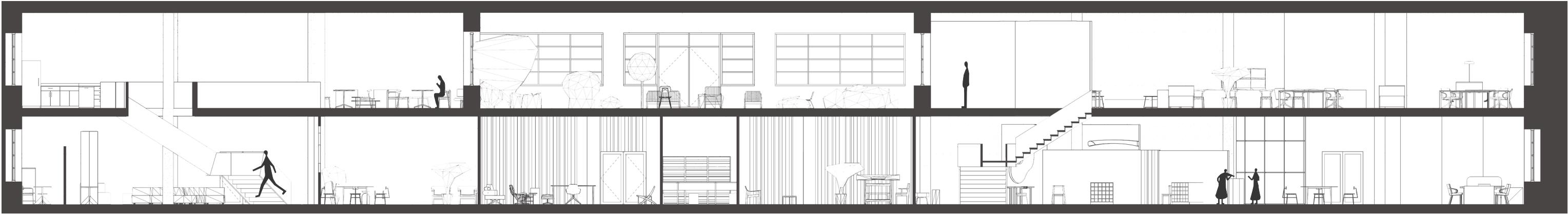
16th Floor South Staircase + Dining Rendering



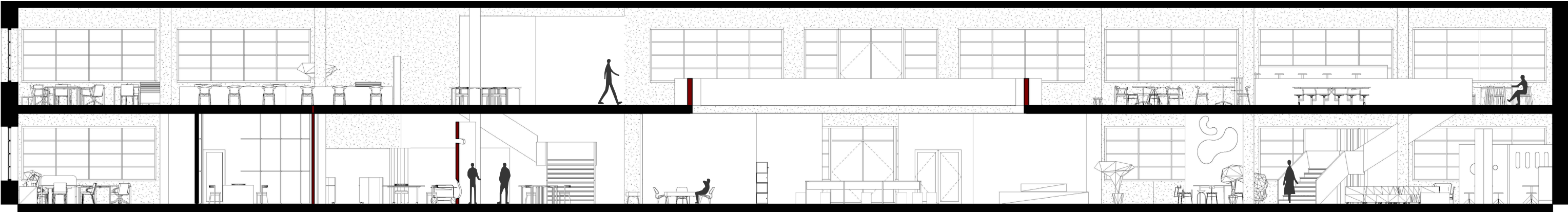
Level 16 - Floor Plan



15 + 16 FL SECTIONS



West Section



East Section

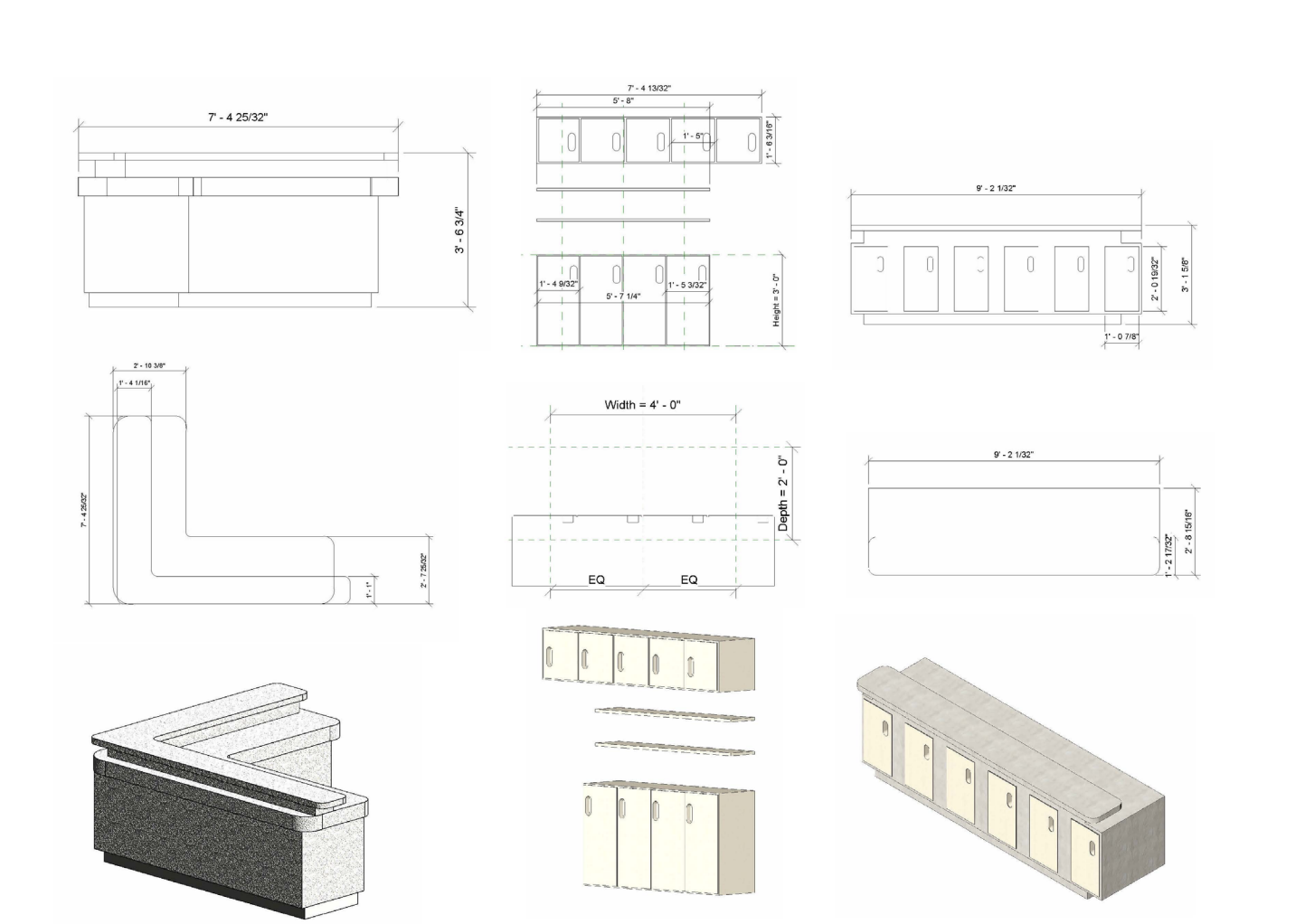




16th Floor Stair and Communal Work Space Rendered Perspective



CUSTOM MILLWORK OF BAR AND CABINET DRAWINGS, 3D MODELS



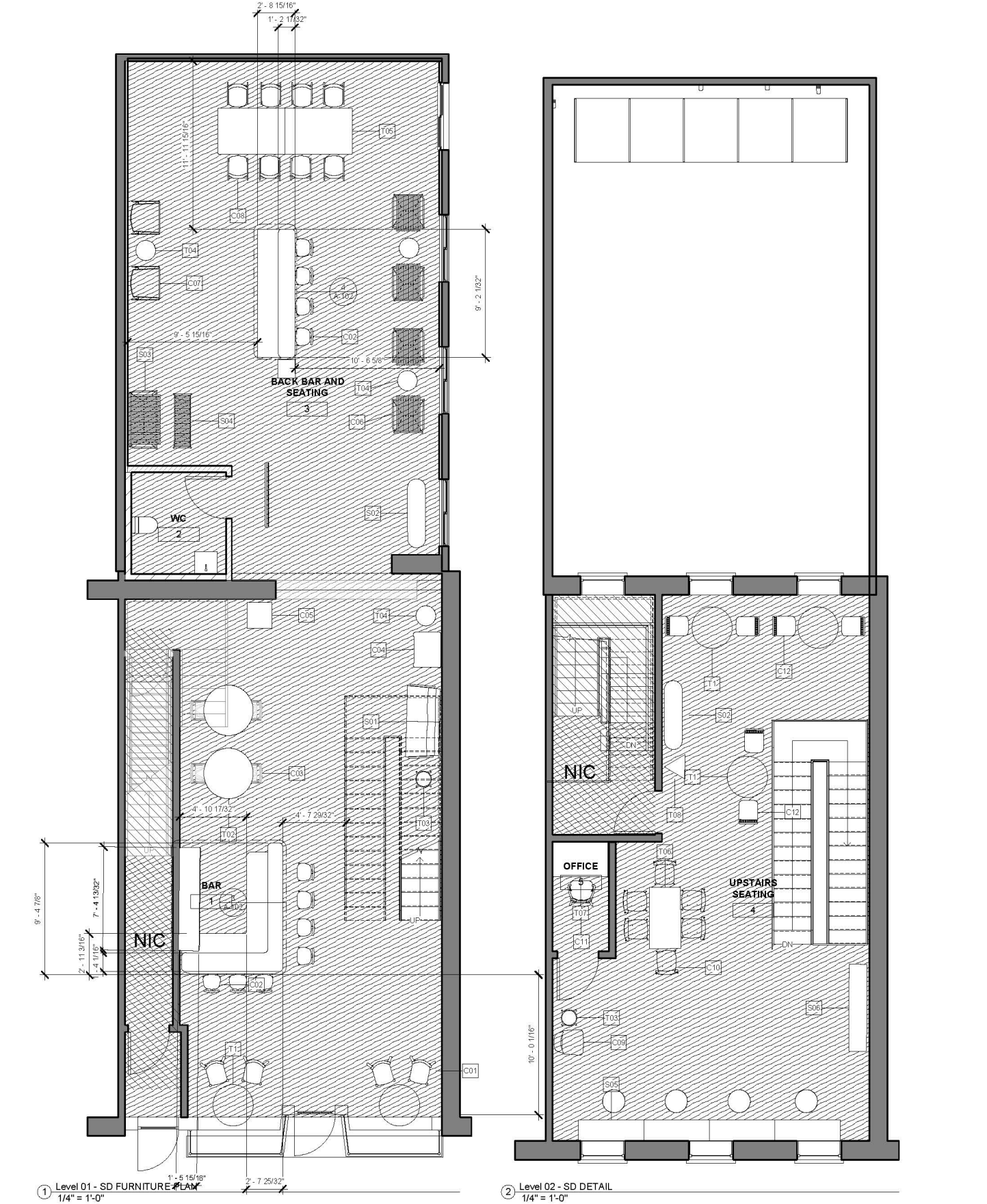
A cafe proposal in Downtown Brooklyn using an existing site that was once a dental office. This project emphasized construction documents, custom millwork design, furniture, lighting, finished plans and details, FF&E, CNC and 3D modeling digital fabrication.

SOFTWARE USED: Autocad, Revit, Enscape, Rhino, Photoshop  
Site: 525 Atlantic Avenue, Brooklyn, NY 11217

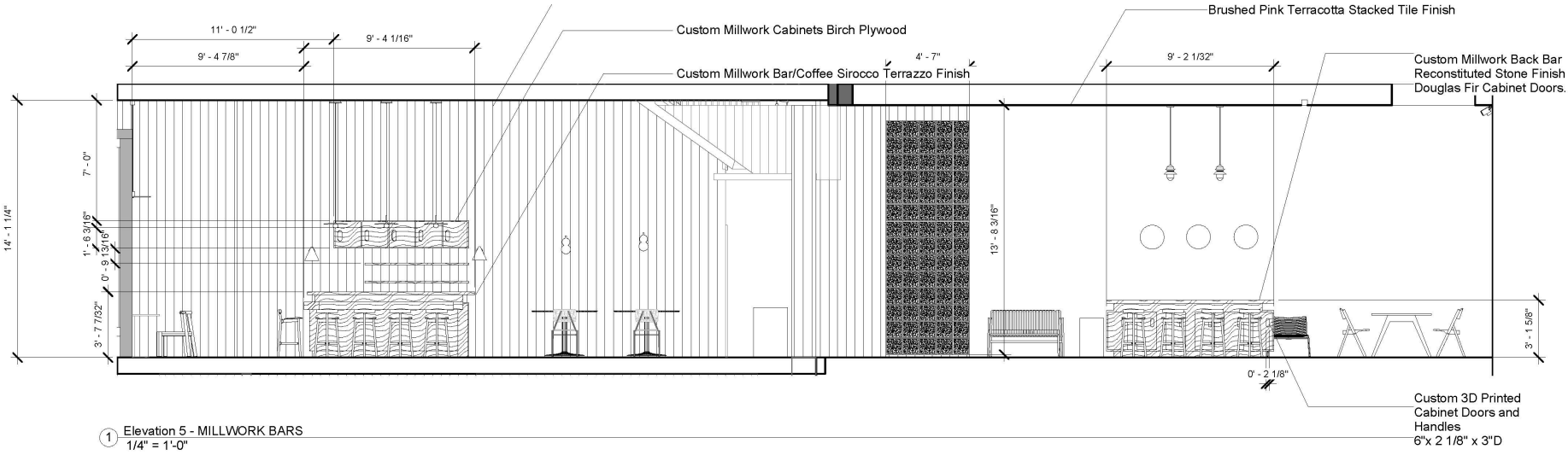


Rendered Section

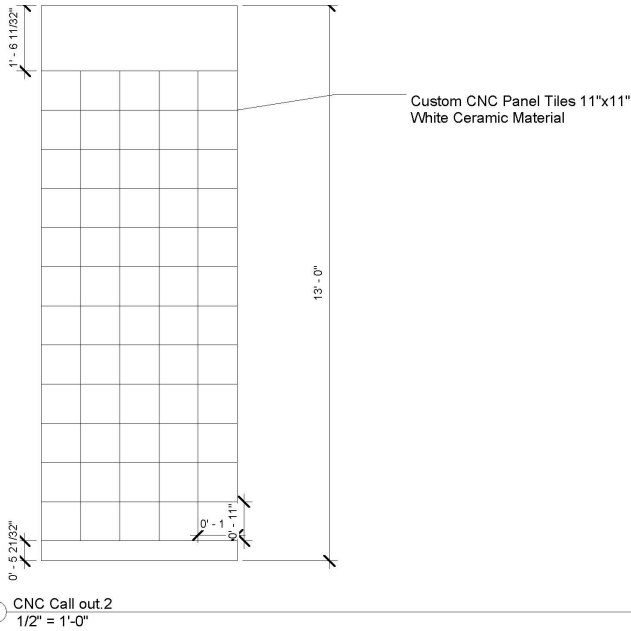
FURNITURE PLAN SPECIFICATIONS



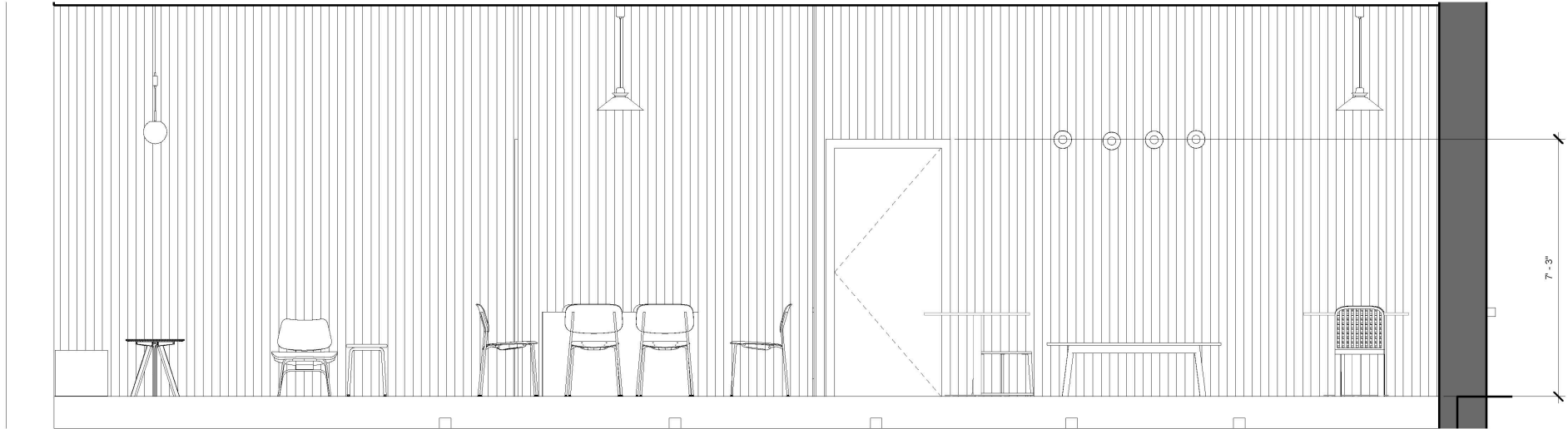
Furniture Plans



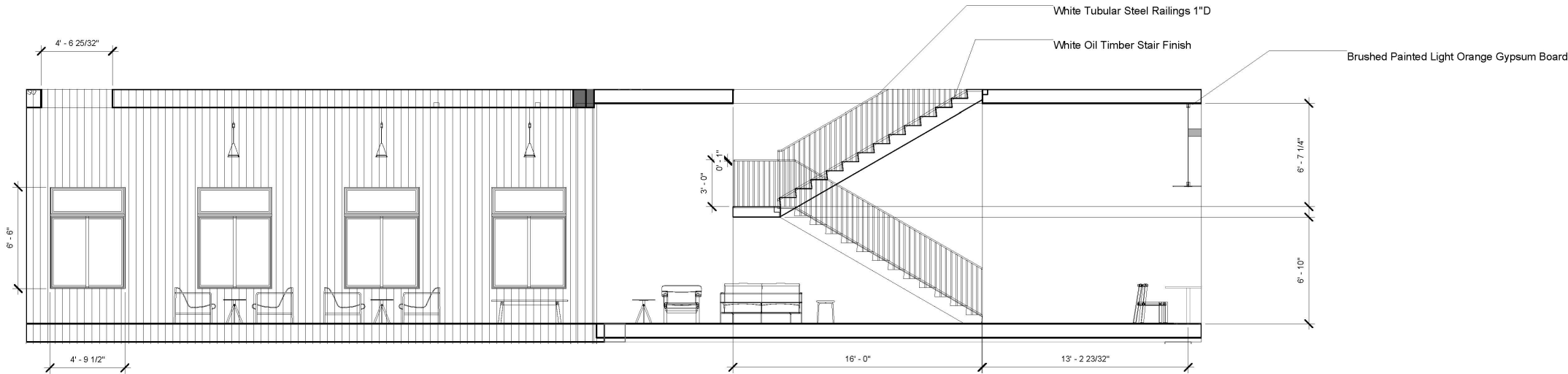
① Elevation 5 - MILLWORK BARS  
1/4" = 1'-0"



④ CNC Call out.2  
1/2" = 1'-0"



② Elevation 10 - 2ND FLOOR SEATING  
1/2" = 1'-0"



③ Elevation 17 - a  
1/4" = 1'-0"



CONTEXT + SITE LOCATION

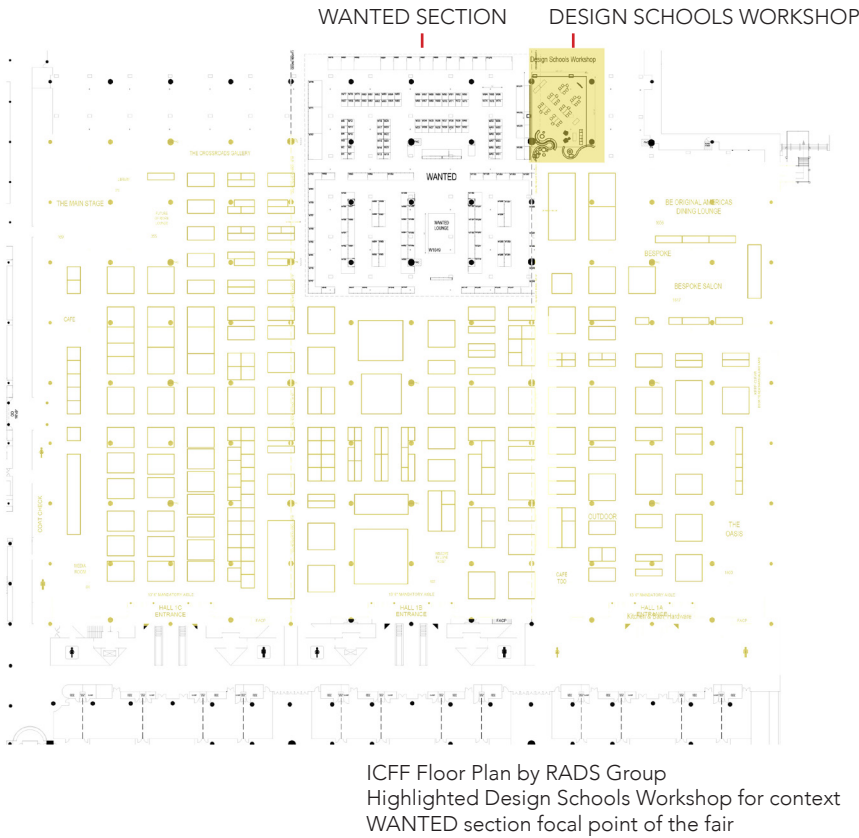


Photography by Jenna Bascom

The Design School’s Workshop is a program under the WANTED design initiative by ICFF (International Contemporary Furniture Fair). Schools from different countries come together for an intensive and immersive 4-day workshop to research, study and design a solution for a topic relevant and imminent in society. This year’s workshop, “Eating in NYC: Reconnecting and Redesigning Food Systems”, was headed by RISD and sponsored by molo and Haworth.

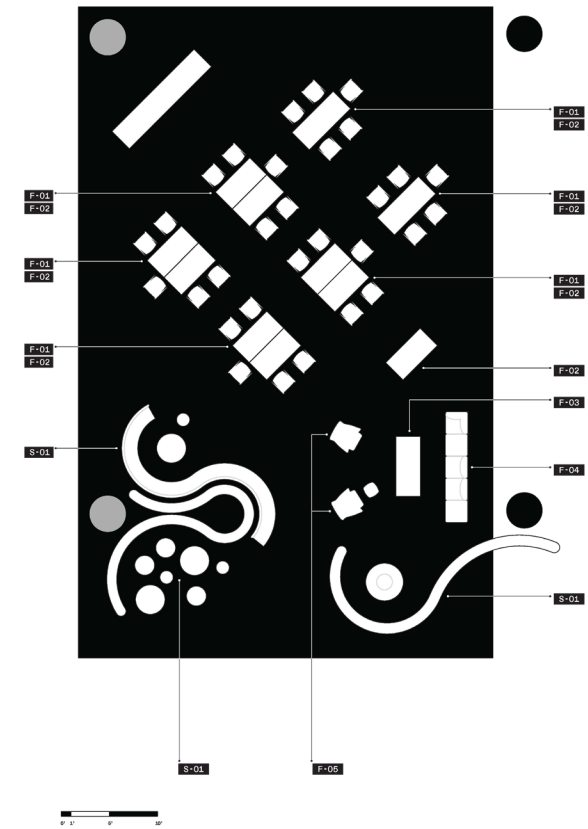
2600 SF, 30+ students, 7 schools  
Worked with molo who sponsored the paper walls and seating  
Consulted needs of the space with Haworth who sponsored the work tables, chairs, and lounge area  
Proposed several design iterations that were different from previous years and were approved by the ICFF directors and RADS group  
Project Management of Design Schools Workshop, ICFF participant assets, website product updates and featured stories  
Onsite installation support for Design Schools Workshop

SOFTWARE USED: Autocad, Adobe Creative Suite, Hand Sketch



ICFF Floor Plan by RADS Group  
Highlighted Design Schools Workshop for context  
WANTED section focal point of the fair

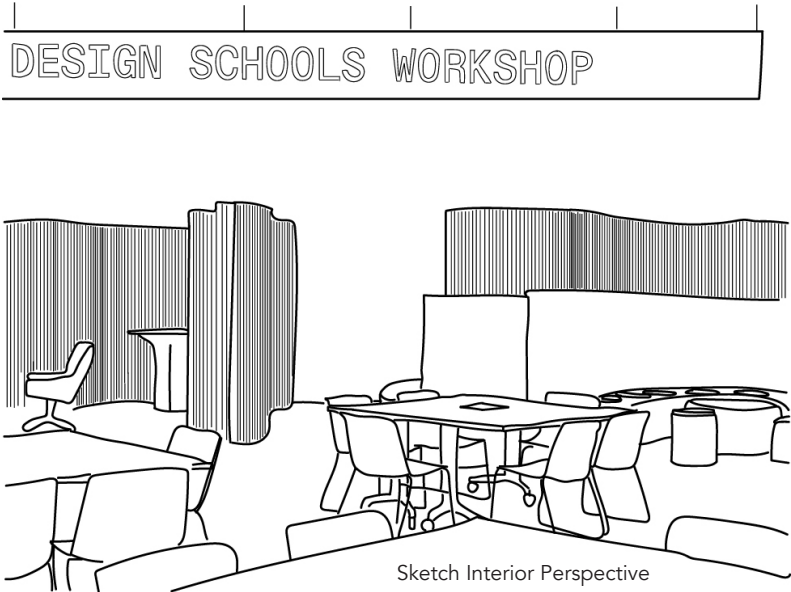
FLOOR PLAN + SKETCH PERSPECTIVE + DETAILS



DESIGN SCHOOLS WORKSHOP

- PRODUCTS BY
- S-01**  
**Softwall and Softblock**  
Designed by Stephanie Forsythe and Todd MacAllen  
Brown paper finish
- PRODUCTS BY
- F-01**  
**Very Stacker Chair**  
Designed by Nicolai Czumaj-Bront and Michael Welsh  
White finish
- F-02**  
**Planes Training Table**  
Designed by Nicolai Czumaj-Bront and Dan West  
White finish
- F-03**  
**Cassina Coffee Table**  
Black finish
- F-04**  
**Resonate Modular Sofa**  
Designed by Haworth and Gensler Design NYC  
Blue finish
- F-05**  
**Lud'o Lounge Chair**  
Designed by Patricia Urquiola for Cappellini  
Grey and Red finish

Graphic by RADS group with specs and flooplan provided by me using Autocad.



Sketch Interior Perspective

The exhibition design was focused on integrating the dynamic and growing floorplan of ICFF within the WANTED section. Working in the Javits Center imparted constraints such as the existing air walls, lighting, floor, circulation, etc. The initial design considered noise, work space needs for the students and instructors that were flexible with an area to focus within the 80,000 sq ft. fair. This was a studio crit environment that also required a threshold that both invited curious passersbys and also functioned as a barrier, seating and rest areas. The paperwall and seating designed by molo, in collaboration.



SITE + GENERAL ENVIRONMENT



Entrance and Threshold: molo Paper Wall and Seating



Photography by Jenna Bascom

PROCESS, DIAGRAMS, LAYOUT ITERATIONS

A.

B.

C.

D.

Sophie Taeuber Arp 1941 and Richard Serra - Concept Inspirations



CONTEXT



Dining Room:  
HAY Rey Chairs, Georg Jensen Tableware  
New electric sources for Noguchi Pendant



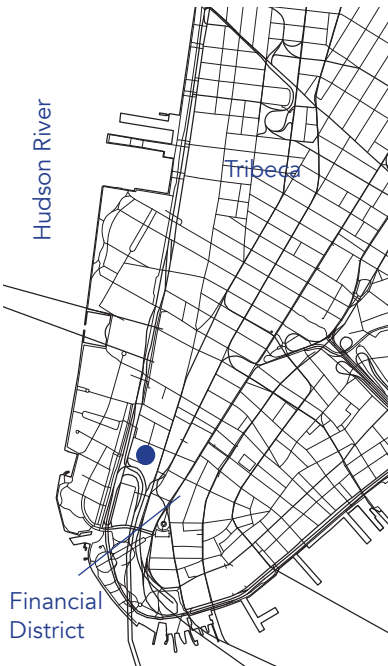
Primary Bedroom:  
Farrow & Ball Skylight  
New electric sources for sconces

77 Greenwich Avenue, located in the Financial District close to Battery Park was designed by TenBerke and FXCollaborative and constructed in 2020. This brand new 2BR, 2.5BTH has cascading views of the Hudson River and skyline, is the first purchase for a young couple.

- Field Measurements and drafting Plans, RCP, Elevations, 3D model
- Scope of Work
- Project Management
- Electrical Work with contractor
- Custom millwork proposal with drawings and 3D model
- Paint, Furniture, Fixtures, Objects, Tableware, Textiles, Lighting
- Consulting
- Styling and Design Direction

**SOFTWARE USED:**  
Autocad  
Rhino  
Photoshop  
inDesign

August - November 2024



Site



Furniture Plan

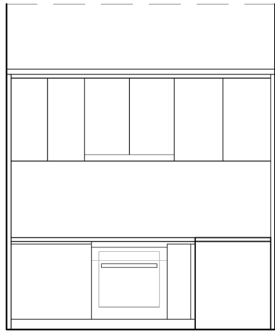


77 GREENWICH ST. FURNITURE PLAN

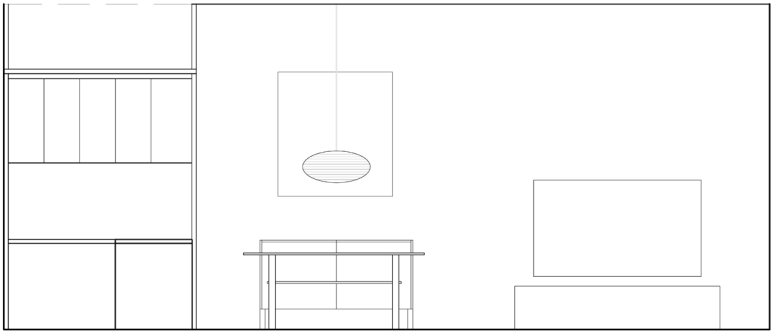
8" = 1'

Furniture plan from field measurements  
West facing views of the Hudson River

KITCHEN AND DINING ELEVATIONS



77 GREENWICH ST. KITCHEN ELEVATION 1/4" = 1'



77 GREENWICH ST. DINING ELEVATION 1/4" = 1'

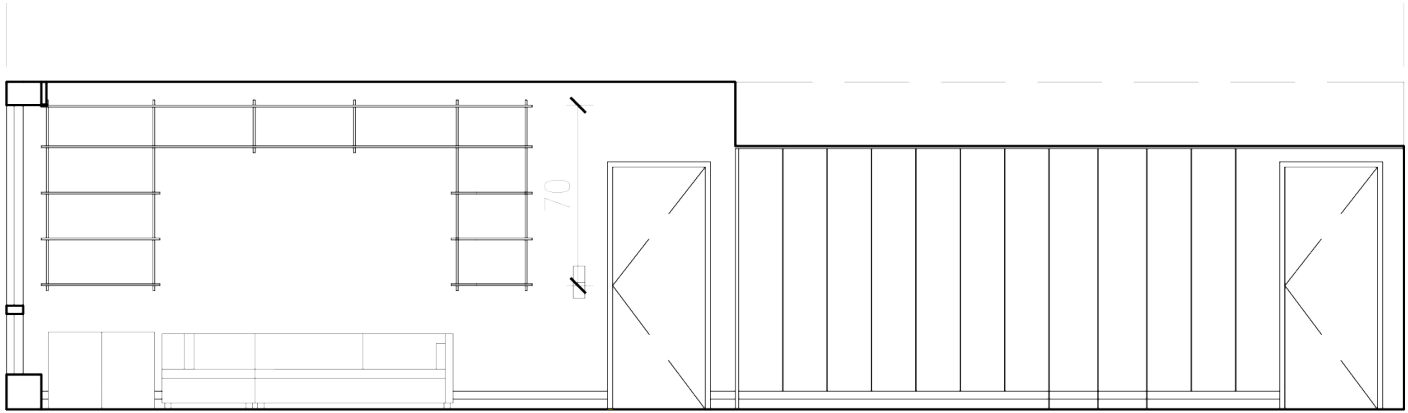


Living + Dining Room:  
Layering geometric patterns, neutral colors and different wood materials to create softness

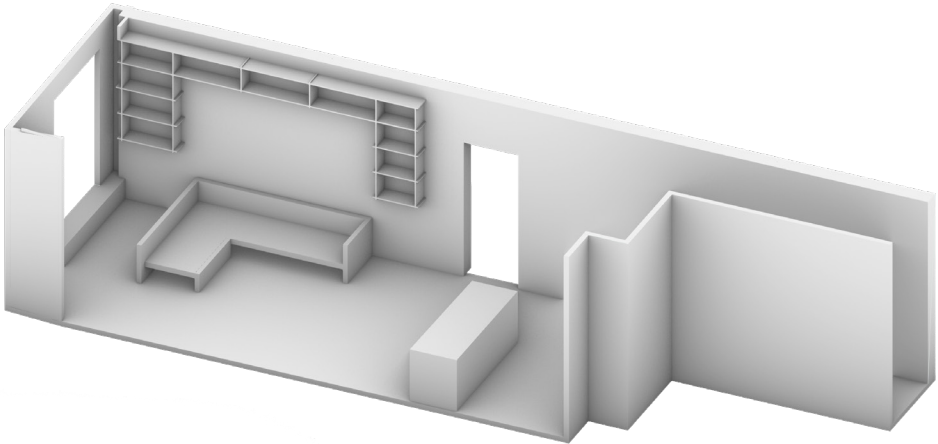


Living Room:  
New electric source for adjustable track light  
New shelving system to maximize space

CUSTOM MILLWORK PROPOSAL ELEVATION + 3D MODEL



77 GREENWICH ST. LIVING ROOM MILLWORK ELEVATION 3/8" = 1'



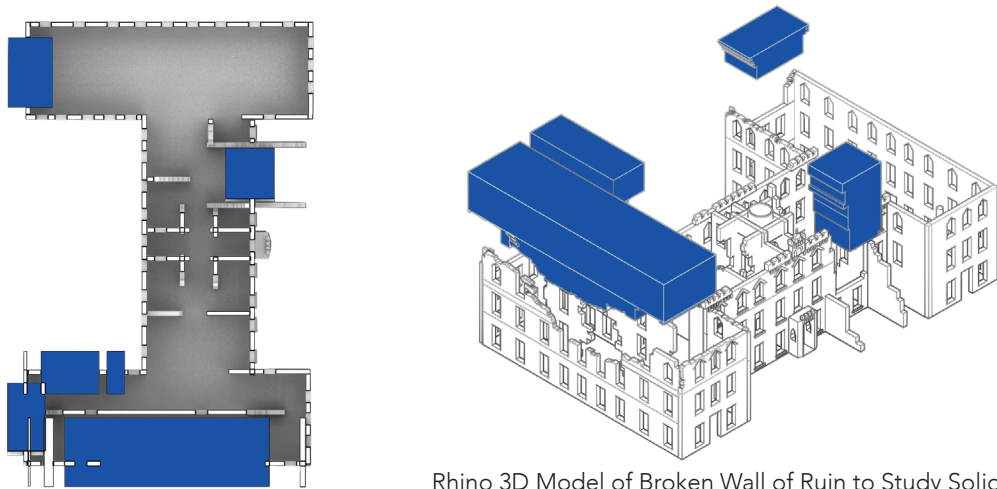
Rhino 3D Model



CONTEXT + SITE: ROOSEVELT ISLAND SMALL POX HOSPITAL



Sketch West Elevation of Final Proposal



Rhino 3D Model of Broken Wall of Ruin to Study Solids and Voids

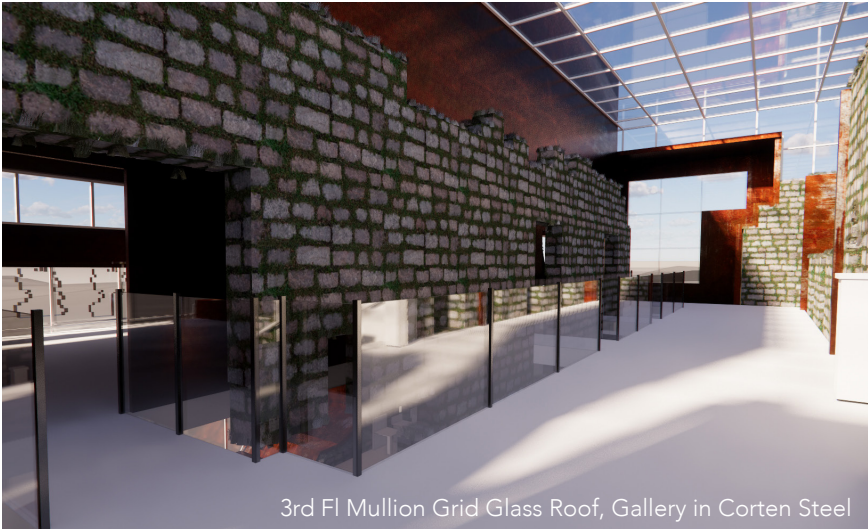


3D Map of Roosevelt Island and Site

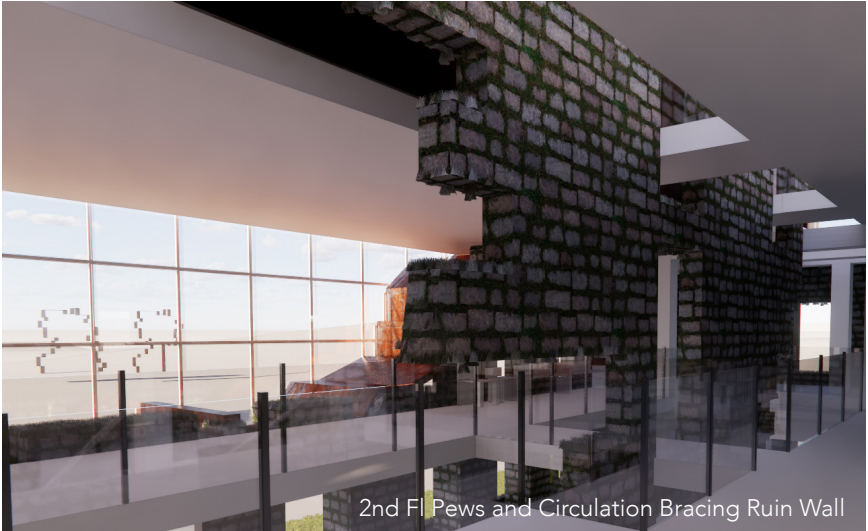


Image Edited of the Roosevelt Island Smallpox Hospital

RENDERED PERSPECTIVES AND PROPOSED INTERVENTIONS



3rd FI Mullion Grid Glass Roof, Gallery in Corten Steel



2nd FI Pews and Circulation Bracing Ruin Wall



1st FI Chapel with Custom Pews Bracing Ruin Wall

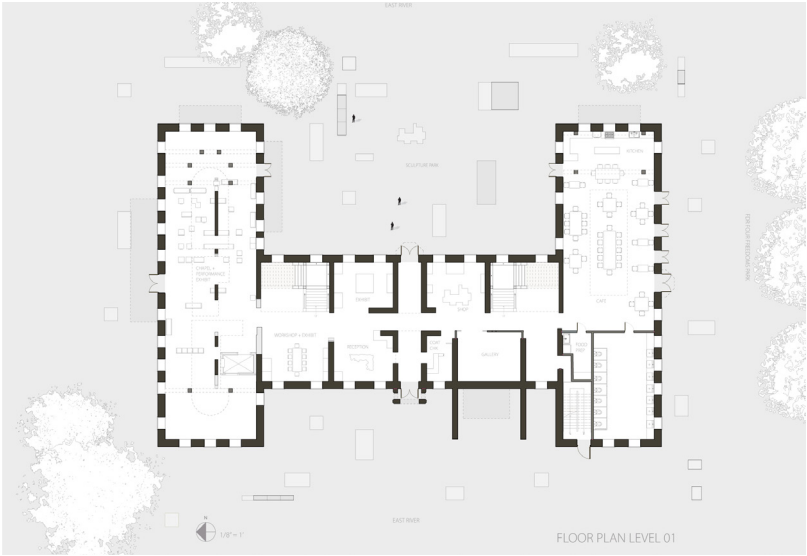
CONCEPTUAL INFO: Using the metaphor of a puzzle, both literally and figuratively, it studies configuration, assembly, context, and journey through the making of scaled objects, interiors and landscapes that seek alternative languages to fill the voids. The interventions are knitted to create a topography of puzzle pieces that lead to unconventional connections.

SITE: The Roosevelt Island Small Pox Hospital is a reimagined 3D sculpture park and chapel. The site is a ruin and is intended to be preserved as its current condition: a continued process of degradation. The architectural interventions interface with multiple built environments - the ruin, interior, exterior, structural support systems, integrated furniture and display mechanisms. Questioning: what is interior and what is exterior?

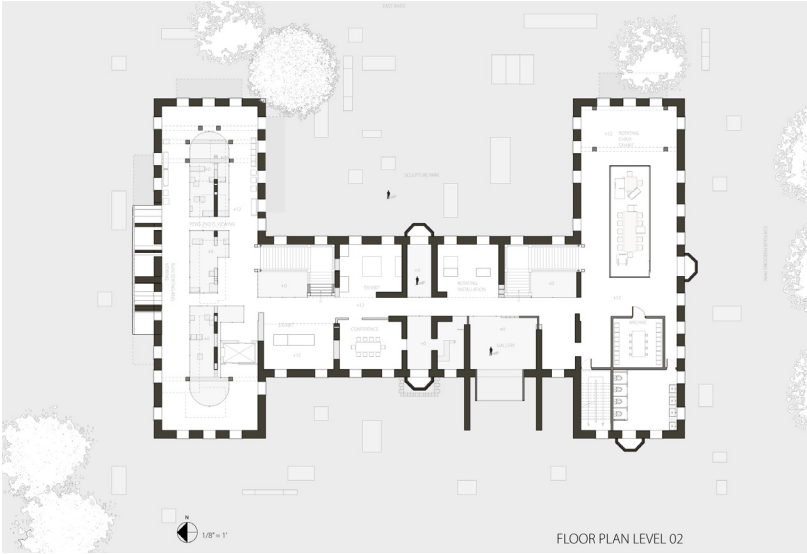
SOFTWARE USED:  
Rhino  
Enscape  
Autocad  
Adobe Creative Suite



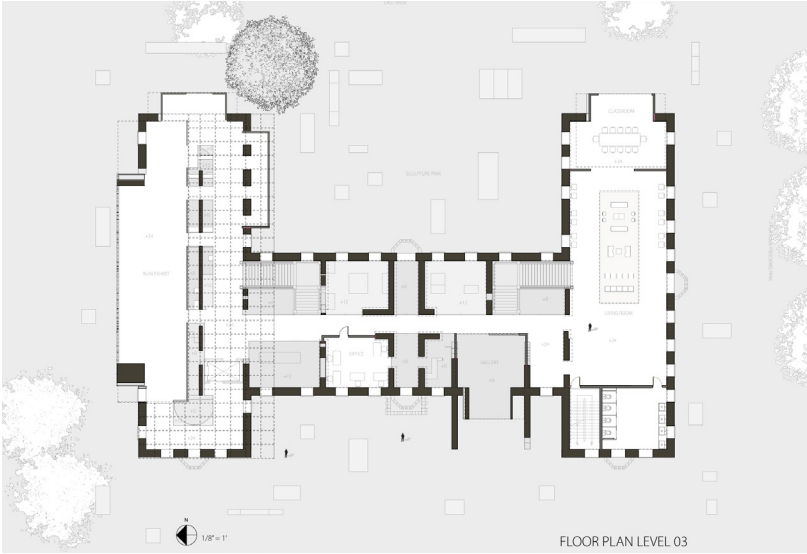
FLOOR PLANS



Level One

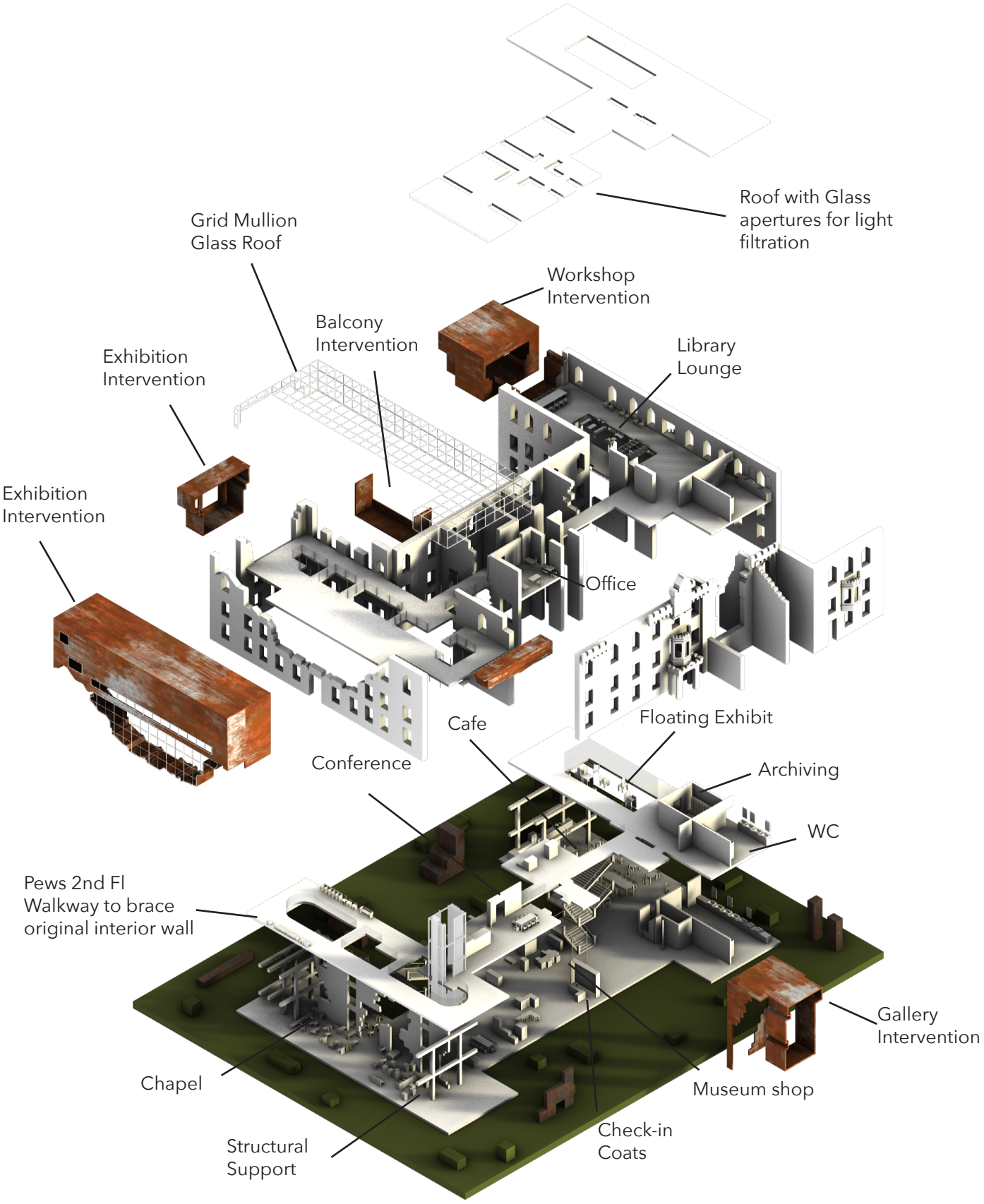


Level Two



Level Three

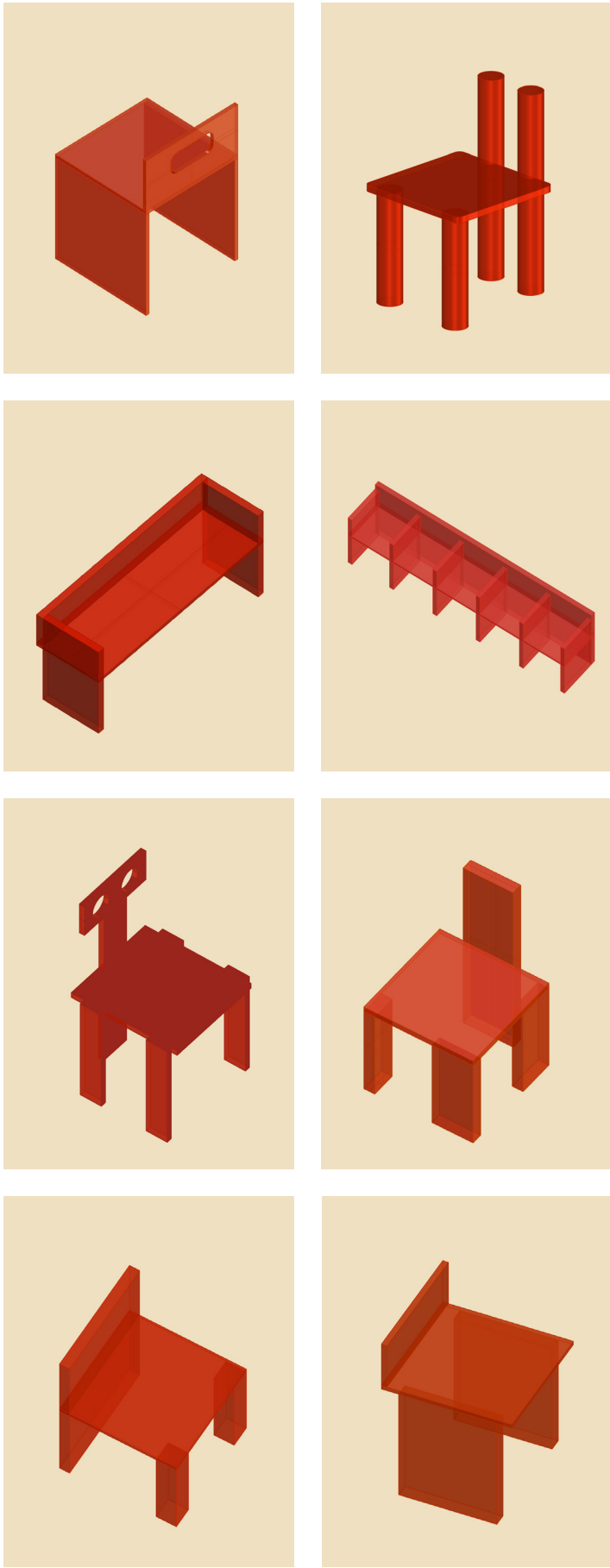
RENDERED 3D MODEL WITH PROGRAM



Rendered Exploded Axonometric



FURNITURE DESIGN



Custom Furniture Collection  
Isometric Models

FURNITURE DESIGN IN CONTEXT



Seating in Cafe



2nd Fl Pews



1st Fl Pews



Seating in Classroom + Parlor

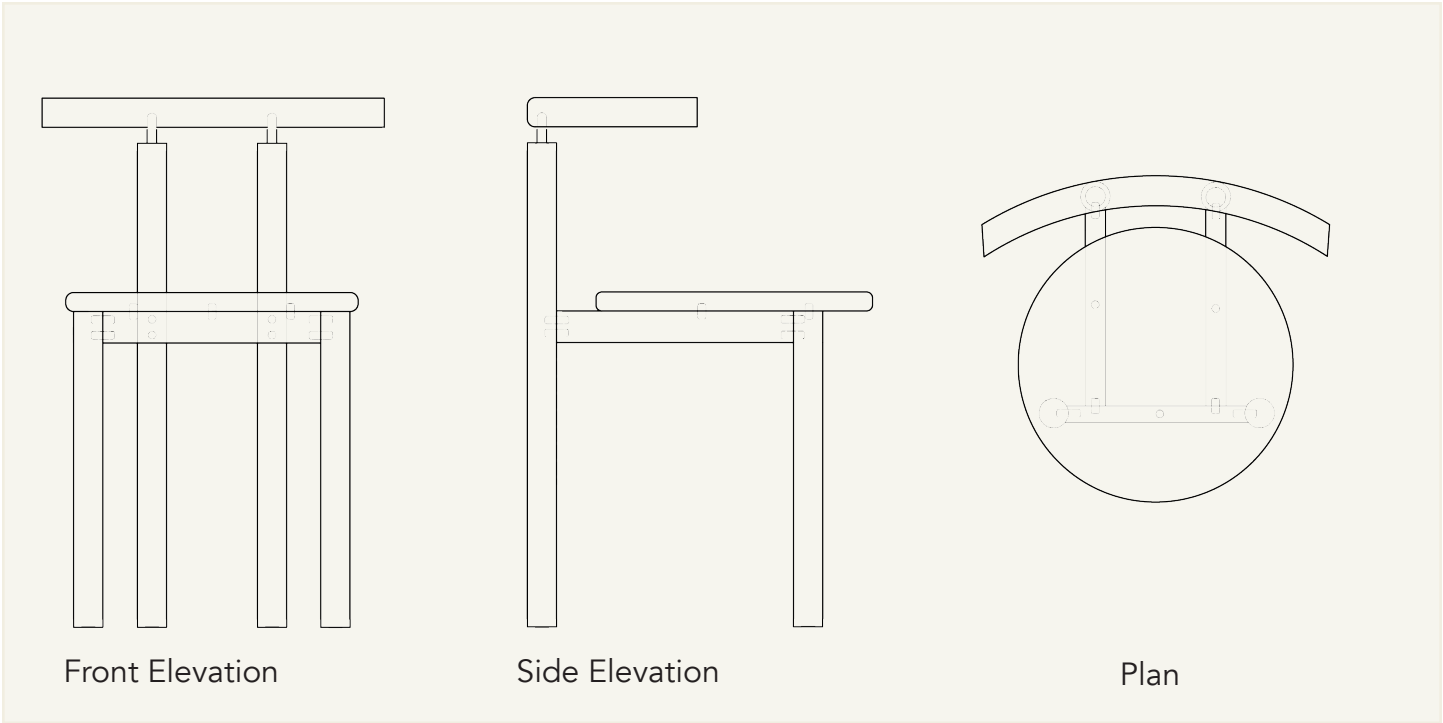


Seating + Table in Workshop

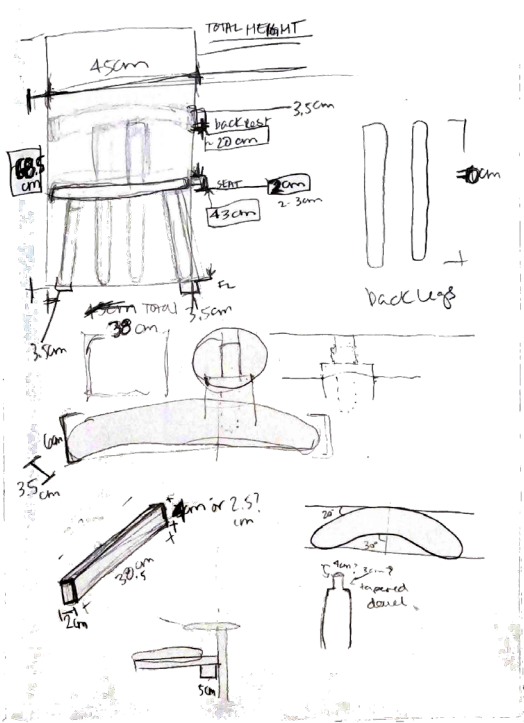


The SØD chair, meaning ‘sweet’ in Danish, was designed and crafted in Copenhagen, Denmark during an intensive summer furniture design program where we traveled around Scandinavia for research and met craftsmen from Denmark, Sweden, Finland and Norway. This seat was inspired by Alvar Aalto’s, “Mod 68” chair, which was seen in various environments across Scandinavia, from high-brow to more public, casual settings.

This light-weight, hybrid chair/stool is not meant to take up a lot of space. With its rounded gestures and peeking joints, the softness can add to any environment on its own or adapt to what is existing. It can function as whatever the user wants it to be. It’s an every day and an every place seat.



European white maple with a soap finish  
Laminated back rest  
Routed legs



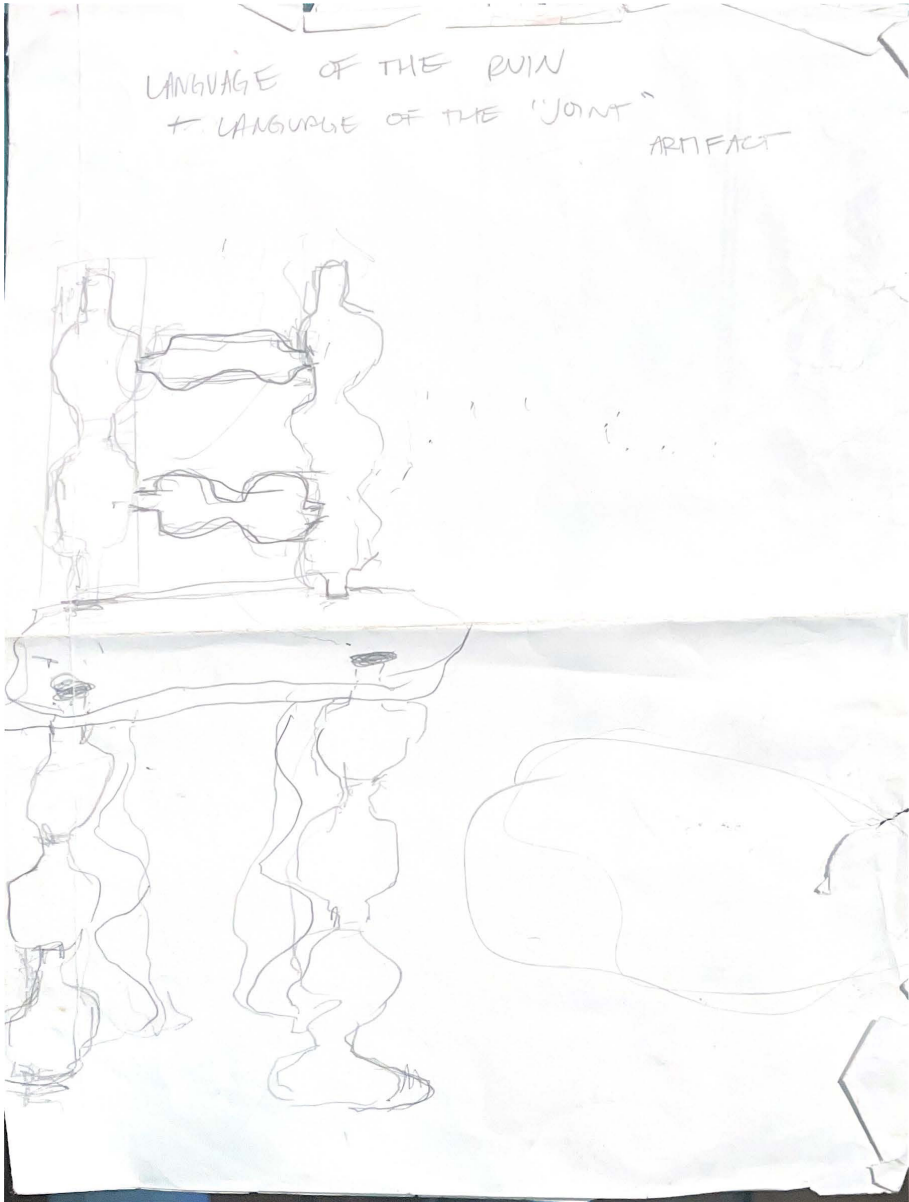
Initial Sketches





This seat, which is also an artifact, which is also a sculpture, is a reaction to the indoctrination of the canon for colonial standards of beauty.

A meditation on reimagining a language that is without hierarchy, acknowledges oppression, something that cannot be predetermined in judgement.



This piece accompanied my final thesis exhibition.

Currently being exhibited at Pratt Institute's Myrtle Hall Gallery.

Selected piece for Pratt Institute's archival catalogue.

Legs and back created using the lathe.

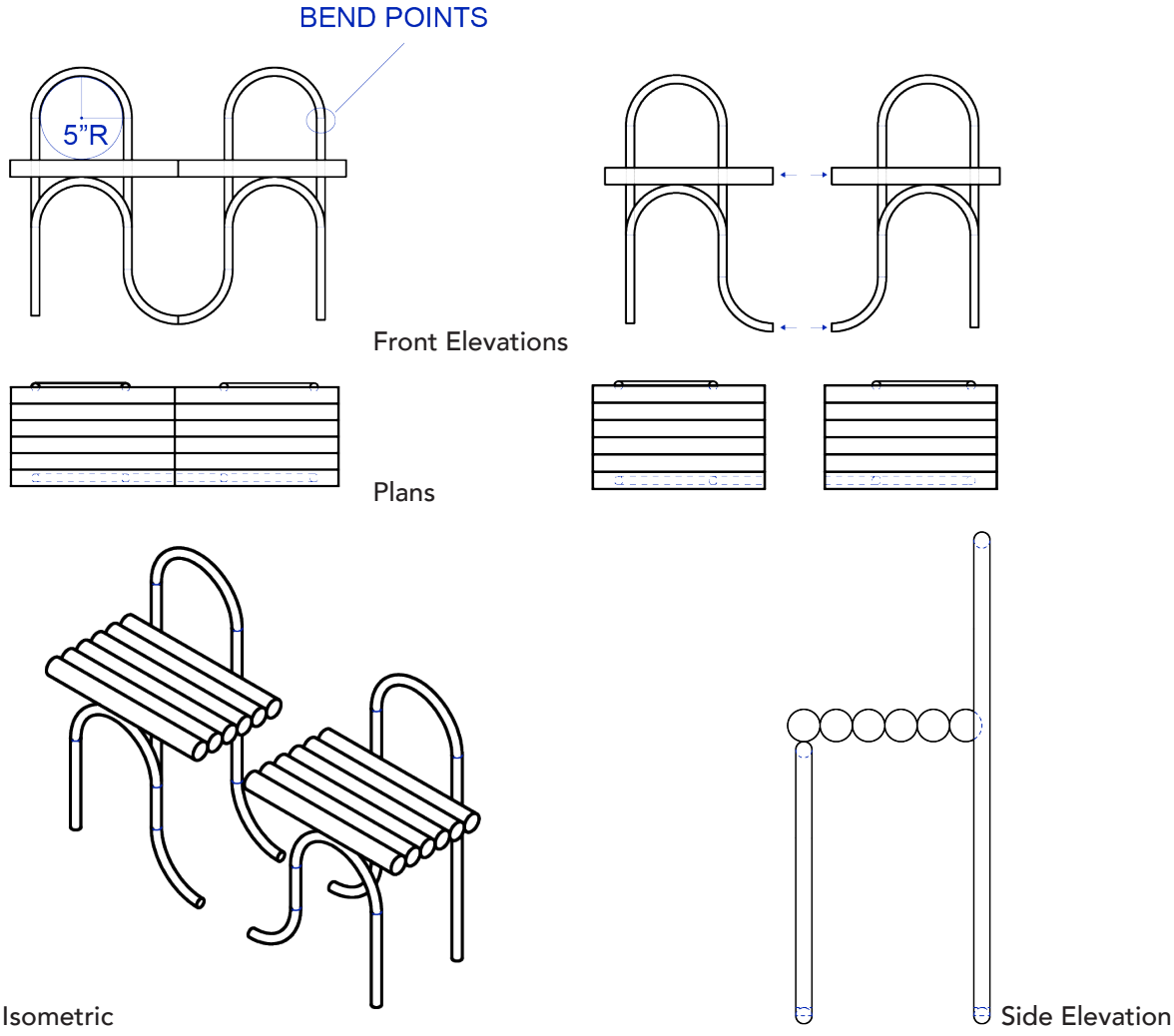
Cherry wood  
Lathe  
Carving/Grinding/Sanding tools

This sketch is the only drawing created to build this piece.



A two-seater metal bench that functions as a whole or separate parts. Inspired by typical urban forms and a doodle.

1 + 2 inch metal tubes welded together to create two seats  
Legs were bent using the Hossfeld to create the 5" radius and 180 degree circumference.





# NOUR BANNOUT

furniture + interior designer • sculptor • artist

## CONTACT

919-357-4638  
nibannout@gmail.com  
nourbannout.com  
portfolio link

## SKILLS

AUTOCAD  
REVIT  
RHINO  
ENSCAPE  
ADOBE CREATIVE SUITE  
CUSTOM FURNITURE + MILLWORK  
SPACE PLANNING  
PROJECT MANAGEMENT  
CONCEPT DEVELOPMENT  
STYLING  
RESEARCH/SOURCE FF&E + FURNITURE  
FLUENT IN SPANISH

## EDUCATION

MFA INTERIOR DESIGN  
PRATT INSTITUTE 2021 - 2024  
Focus: Furniture Design, Adaptive Reuse,  
Sculpture, Artifacts, Belonging

On Display:  
“Post-Colonial Silla” at Pratt’s Myrtle Gallery  
Maquettes archived for Pratt’s Thesis collections

BA INTERNATIONAL GLOBAL STUDIES  
UNC GREENSBORO 2010 - 2014

### STUDY ABROAD

ADAPTIVE REUSE  
PORTO, PORTUGAL - SU23

FURNITURE DESIGN  
DIS COPENHAGEN - SU22

POLITICAL SCIENCE  
UNIVERSITY OF COPENHAGEN - FA13

INTERNATIONAL BUSINESS  
UNIVERSITE JEAN MOULIN LYON - SP12

### CONT. ED

GRAPHIC DESIGN FOUNDATIONS  
PRATT INSTITUTE - SU19

ART OF DESIGN  
SCHOOL OF VISUAL ARTS - SP17

ILLUSTRATION PORTFOLIO  
SCHOOL OF VISUAL ARTS - FA17

## WORK EXPERIENCE

### DESIGN ASSISTANT

International Contemporary Furniture Fair (NY, NY) | January 2025 - June 2025

- Exhibition design for 2,600 SF Design Schools Workshop, lead for all phases (floor plan, managed production, sponsor engagement, and installation across a multi-disciplinary team)
- Cross-Functional project management
- Design support for global and local platform of designers to exhibit and promote at ICFF/WANTED and all marketing channels/initiatives

### FREELANCE INTERIOR DESIGNER + CREATIVE PRODUCER (NY, NY) | July 2024 - present

- Create detailed schematic design and visualizations
- Styling and assist on installs, conduct site surveys
- Design and conceptualize original custom millwork and furniture
- Research, source and procure a wide range of FF&E, furniture, light
- Present design concepts, color, finishes, furnishing selections
- Project manage budget, schedule, deliveries, install and deadlines
- Coordinate with vendors, contractors and clients
- Art direct for new furniture and product shoots, branding and content direction, production assist photoshoots with props and styling

### SALES ASSISTANT + EVENT/EXHIBITION SUPPORT Head Hi (BK, NY) | 2021 - 2025

Hybrid architecture and design gallery, book shop, espresso house that hosts cultural programming

### WOODWORKING INTERNSHIP

#### Sawtooth School for Visual Arts (Winston Salem, NC) | SU2023

- Awarded an independent study opportunity and recipient of the Graduate Student Engagement Fund to study Moravian craftsmanship and Southern Decorative Arts
- Built and installed new cabinet system

### DIGITAL MARKETING ACCOUNT MANAGER, SPECIAL PROJECTS LEASING COORDINATOR

Rose Associates (NY, NY) | 2018 - 2021, 2016 - 2018  
Real Estate and property management firm

- Managed marketing platform for 27+ high end residential accounts
- Project managed a variety of deliverables at a fast-paced and demanding firm while successfully meeting deadlines and profit goals
- Consulted clients, stakeholders and coordinated with cross-functional teams, marketing, photography, art and design partners
- Conceptualized, presented and produced creative campaign pitches, strategies and performance stats to clients and stakeholders
- Identified opportunities for growth and rebranding
- Developed brand identity and digital media presence
- Art directed for select projects to generate content for branding
- Designed model apartments and sourced furnishings



THANK YOU FOR VIEWING.