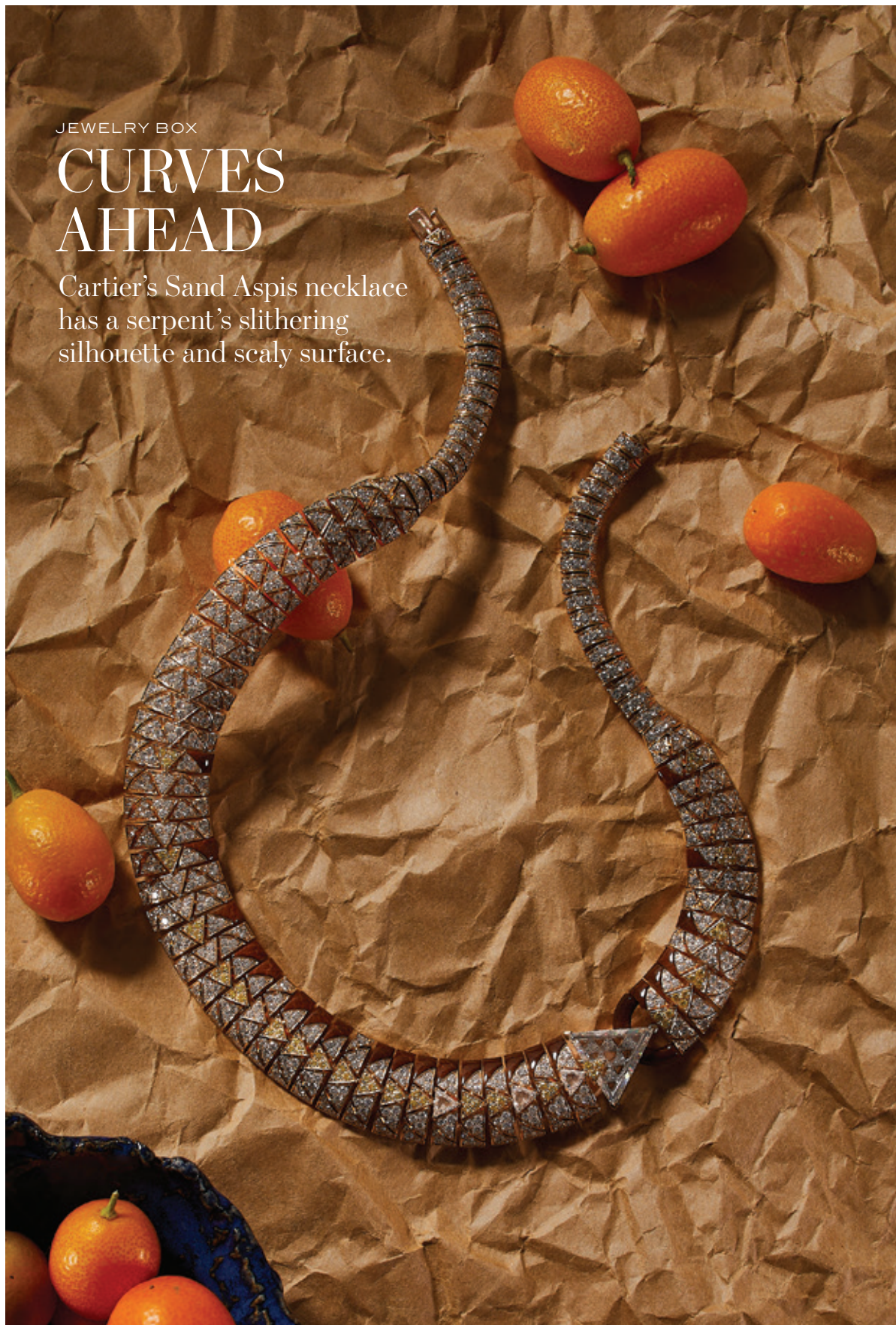


JEWELRY BOX

CURVES AHEAD

Cartier's Sand Aspis necklace has a serpent's slithering silhouette and scaly surface.



A symbol of royalty and a source of poison, the asp—a snake found in the Nile region—is an animal full of intrigue. The sinuous creature served as the inspiration for a new high jewelry parure from Cartier, called Sand Aspis. The necklace is composed of triangular motifs that reference serpentine scales. A triangular rose-cut diamond weighing 3.63 carats alludes to the viper's head, while the rest of the necklace comprises yellow and white diamonds set in rose gold with petrified-wood inlays, conjuring the moiré reflections of snakeskin. *For details see Sources, page 134.*
—Jenny Hartman

PHOTOGRAPHY BY
F. MARTIN RAMIN
PROP STYLING BY
TANYA MOSKOWITZ