

design portfolio
selected works

DESIGN | FOOTWEAR DESIGN

WREN WALKER

A person wearing a white hooded garment is shown from the chest up, holding a large, crumpled, translucent material that partially obscures their face. The background is a soft, hazy outdoor scene with trees and a bright sky. The overall mood is artistic and ethereal.

MY NAME IS WREN WALKER.
I found my love of nature hik-
ing in the American West, in its
endless movement—rivers carving
canyons, winds shaping dunes,
and animals in graceful motion.
I see fashion as an invitation for
consumers to rediscover this rela-
tionship. Using natural materials,
silhouettes, colors, motifs, and
movement, I am inspired by the
way the Earth looks like us—tree
branches to our veins, our hair to
strands of dried grass. There is the
potential to exist on this planet
without harming its inhabitants,
this is what I seek to understand
with my fashion.



RE.

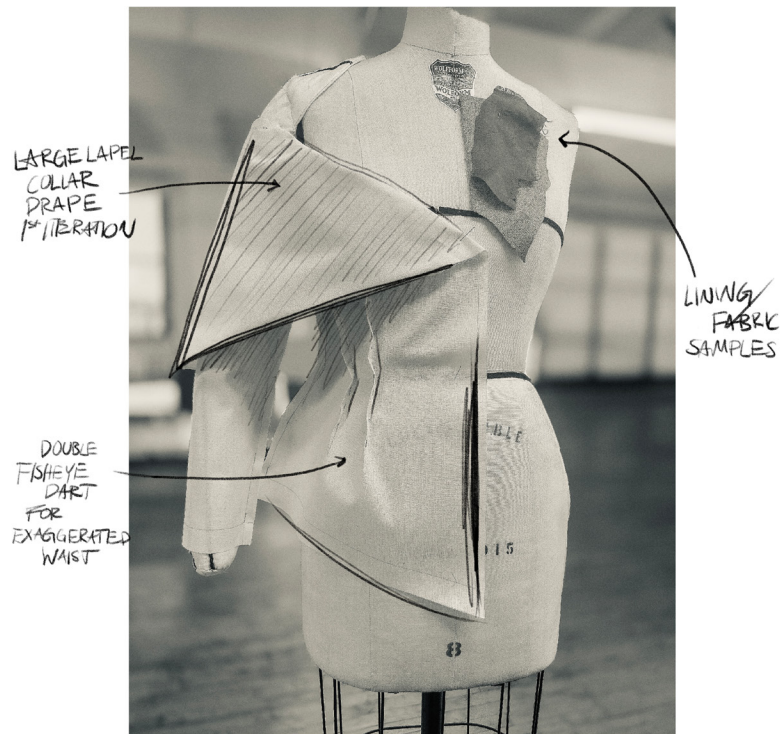
JULIUS ROBERT
MAYER, a German
physicist, wrote that
energy cannot be
created or destroyed.
When a car-
bon-based life form
dies, its energy car-
ries on. There is flow,
and beauty endures
uniquely beyond
life. Regeneration is
about applying that
principle in clothing.
These are clothes
meant to wither.

RE was recently
featured in *Nasty
Magazine*.

Photography | Jade Moscoe
Photography Assist | Jon Copes
Talent | Riley Hundley-Woodell
Makeup/SFX | Nica Tan
Hair | Christina Y. Kim
Stylist | Kira Miller
Millinery | Sideara St. Claire
Production Assist | Miguel Silva
BTS Filming | Kayla Kwak



RE.



Annotated progress photo in muslin

Photography | Jade Moscoe
Photography Assist | Jon Copes
Talent | Riley Hundley-Woodell
Makeup/SFX | Nica Tan
Hair | Christina Y. Kim
Stylist | Kira Miller
Millinery | Sideara St. Claire
Production Assist | Miguel Silva
BTS Filming | Kayla Kwak





Photography | Jade Moscoe
Talent | Kitty Umina
Makeup | Sienna K. Young



A creative photoshoot with the pieces from the RE collection. A refined, elegant world at peace with the chaos of nature.



MANY RELIGIONS AND CULTURES consider the ground sacred, a source of energy. Many believe that energy from the Earth enters your body through the ground. Through the last few decades, scientists have been discovering the Earth is more alive than we ever imagined. The dirt is filled with an unimaginable amount of microorganisms, plants communicate with one another, and trees form bonds. These shoes are a visual representation of that energy entering your body, a reminder to the wearer that they are not just a resident of this world, but a part of it. We can only begin to think of sustainability when we understand our part in the world.



A LIFE CYCLE ASSESSMENT is an evaluation of a product's environmental impact over its lifetime. Making clothing that is meant to wither is only part of the picture. How were they made? When they wither, beyond being aesthetically pleasing how will they assimilate back into the planet? These textiles are a combination of dead stock wool and bioplastics. Regenerative, and completely biodegradable, featured in Pratt Institute's Work in Progress exhibition 2025.



12 x 12
Gelatin Based Bioplastic
Strained wool



12 x 12
Agar Powder Based Bioplastic
Wool



12 x 12
Agar Powder Based Bioplastic
Shredded Wool



12 x 12
Arrowroot Powder Based Bioplastic
Wool



12 x 12
Potato Starch Based Bioplastic
Shredded Wool



WHAT I HAVE COME TO BELIEVE is that being sustainable means creating a system in which we don't just 'take less,' but one in which we actually give back. In the summer of 24, I stumbled across a study done in China. Two sensors were put on the knee cap, one on the top and bottom, where the skin contorted the most. They created wearable energy harvesters. This is Kinetic energy. Hence the name of this project, Kinesis.

To me this finding begged the question, what if fashion designers and scientists could join forces? Using traditional sewing and applique techniques alongside new discoveries?

I aim to integrate our bodies into the natural world, transforming passive consumption into active participation. In doing so, I envision a future where fashion becomes a means of sustainability that is symbiotic rather than extractive.

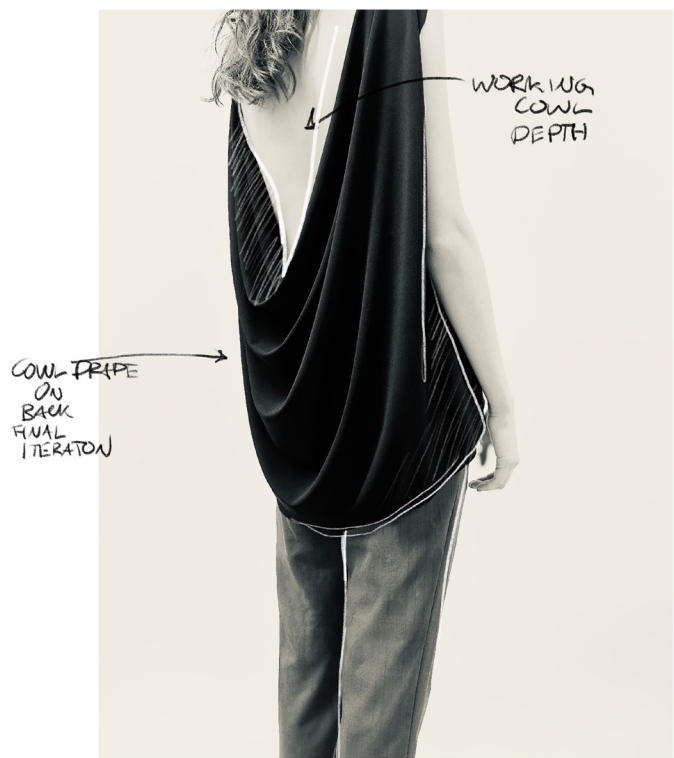
THE HOODIE IS THE MOST practical in application. The idea is to create a large amount of space in the middle of the hoodie for sensors to swing and collide with each other, creating energy, but with a barrier that keeps the wearer from interacting directly with them because the hoodie itself is double-sided.



Textile Closeup | HEAT SCULPTED VELVET

THIS LOOK STUDIES HOW humans move and highlights the motion of their bodies.

The back of this look drapes and sways with the wearer, while the inner leg piece makes one think about what goes on in the negative space of our movement.



Annotated progress photo of cowl back

Photography | Jade Moscoe
Talent | Vali Vonesa





WREN.A.VIOLET@GMAIL.COM

+1(949) 295-9355