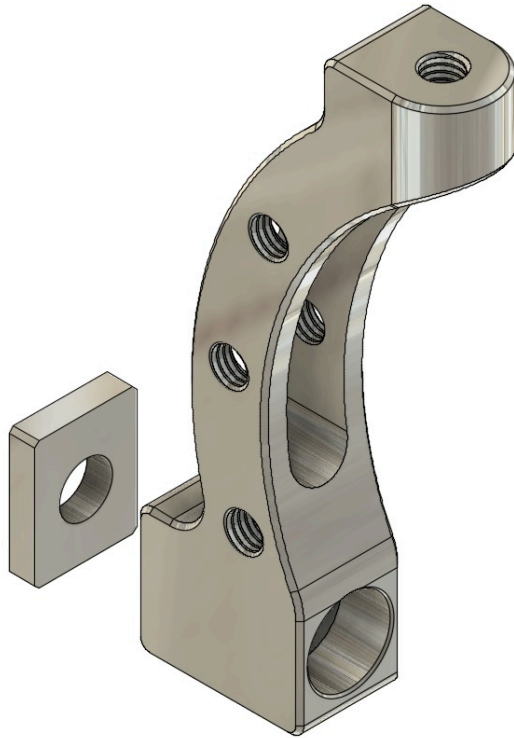


SHOVEL RESEARCH

FMBCH INSTALLATION NOTES



Installation notes:

Tools needed: 10mm wrench and 5mm hex key, or two 5mm hex keys

While I encourage everyone to work on their own bikes, please have a qualified mechanic install or work on your brakes.

FMBCH must be secured to a bicycle fork through the crown using an M6 bolt and nut. The length of bolt and type of nut depends on the application. Bolts may need to be trimmed.

For applications where the FMBCH won't clear the lower headset cup, a 0.125in spacer is available for purchase separately. See the geometry drawing for measurements.

Front racks:

If you're installing a rack with a brazed-on mounting bolt through the FMBCH, please ensure that it can seat fully within the counterbore of the FMBCH. Some racks (Nitto and others) have too much of a glob of brazing material under the chrome to work properly. Further, you'll only be able to install the FMBCH along with a front rack if your fork takes a recessed nut, as the rack's mounting bolt won't be long enough otherwise to reach the other side of the crown through the FMBCH.

Please write to info@shovelresearch.com for any product related questions

