

PONCE ARCHITECTURE

*Ponce Architecture is a HUB certified,
award-winning design practice committed to
research and collaborative design processes that
contribute to their surroundings and environment.*

info@ponce-architecture.com



Prefabricated building, North East Houston



The constraints consisted of a small budget of \$60/sq.ft, the inherent parameters given by the building manufacturer, and the challenge to redefine sacred space without any natural light.

The pastor asked us to eliminate any preconceived notions of church architecture and, instead, create a black box suitable to accommodate his illustrated sermons.

The result was an undulating roof that serves as an identity marker for the church.



Prefabricated building North East Houston



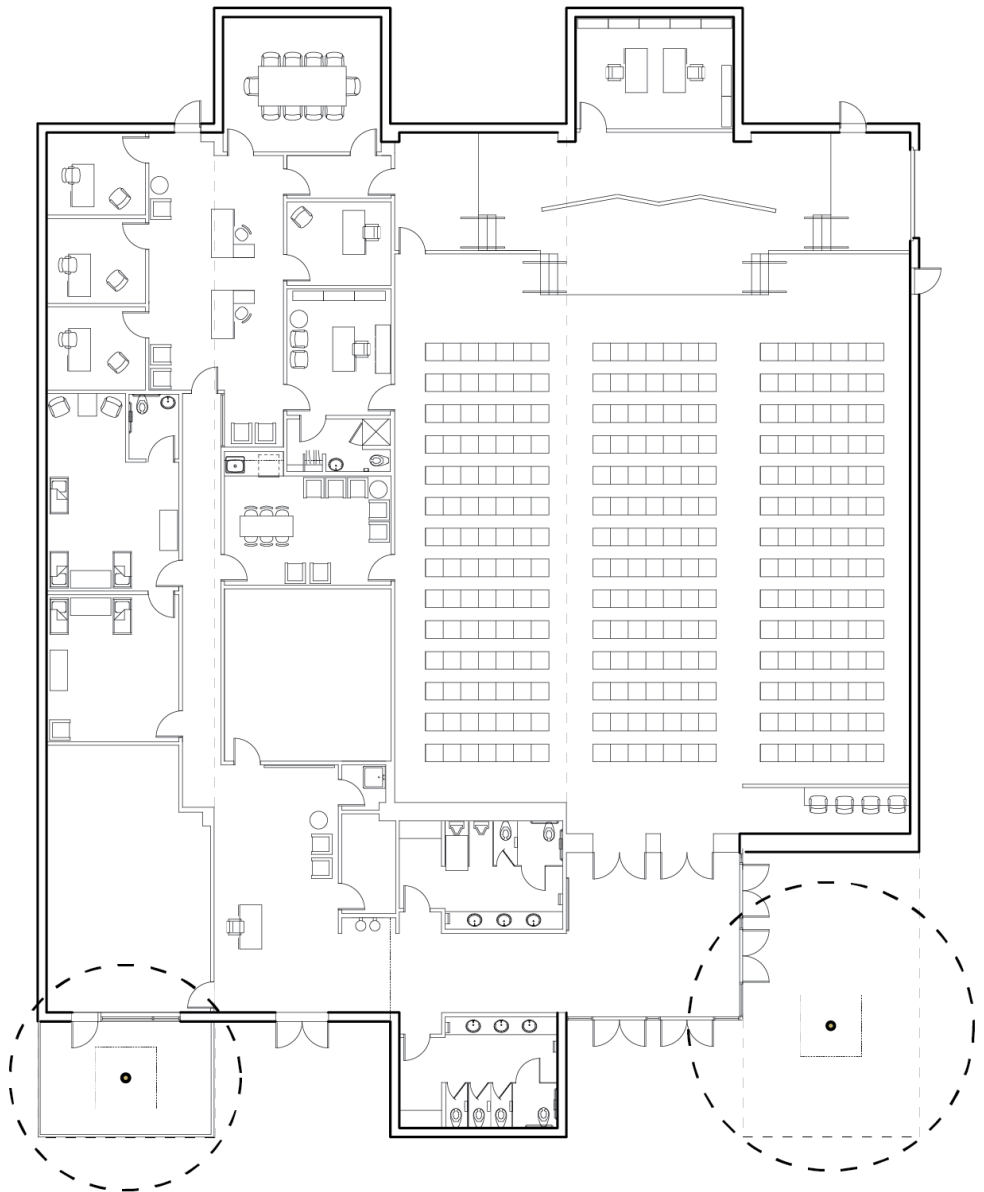
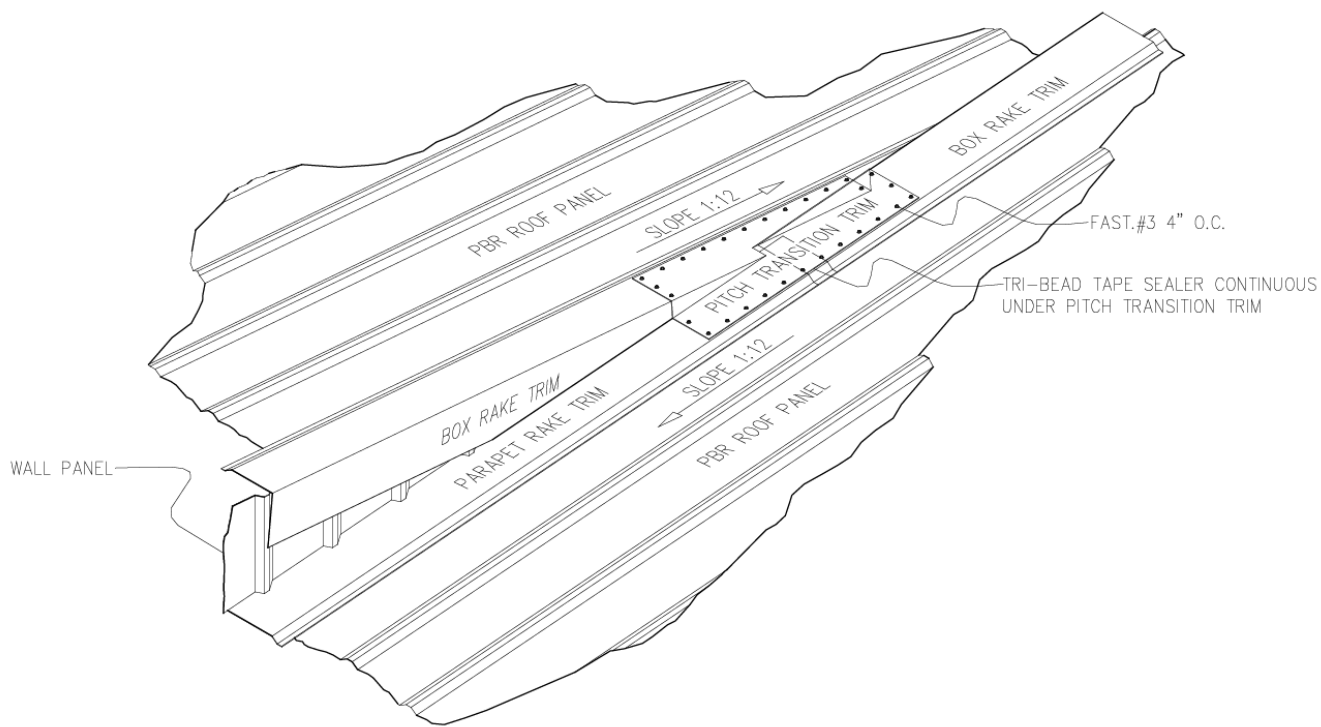
Prefabricated building North East Houston



Prefabricated building North East Houston



By reducing the form to its most essential prefabricated parts, such as windowless facades, roof slope, material and structural constraints, a clutter/clad free design is established.





“We have before us a picture, constantly being retouched, that is vigorously composed of spots of light and zones of shadow, of remarkable convergences of lines of forces at certain points, of road networks sometimes loose, sometimes closely knit”

-Maurice le Lannou

Today, conversations about the Texas–Mexico border are about fears projected onto a wall.

I'm interested in a different picture, one made through life overcoming misconceptions and prejudice. Is it possible to turn the transgression that the closed border and its objects represent into an open dialogue about reciprocity?

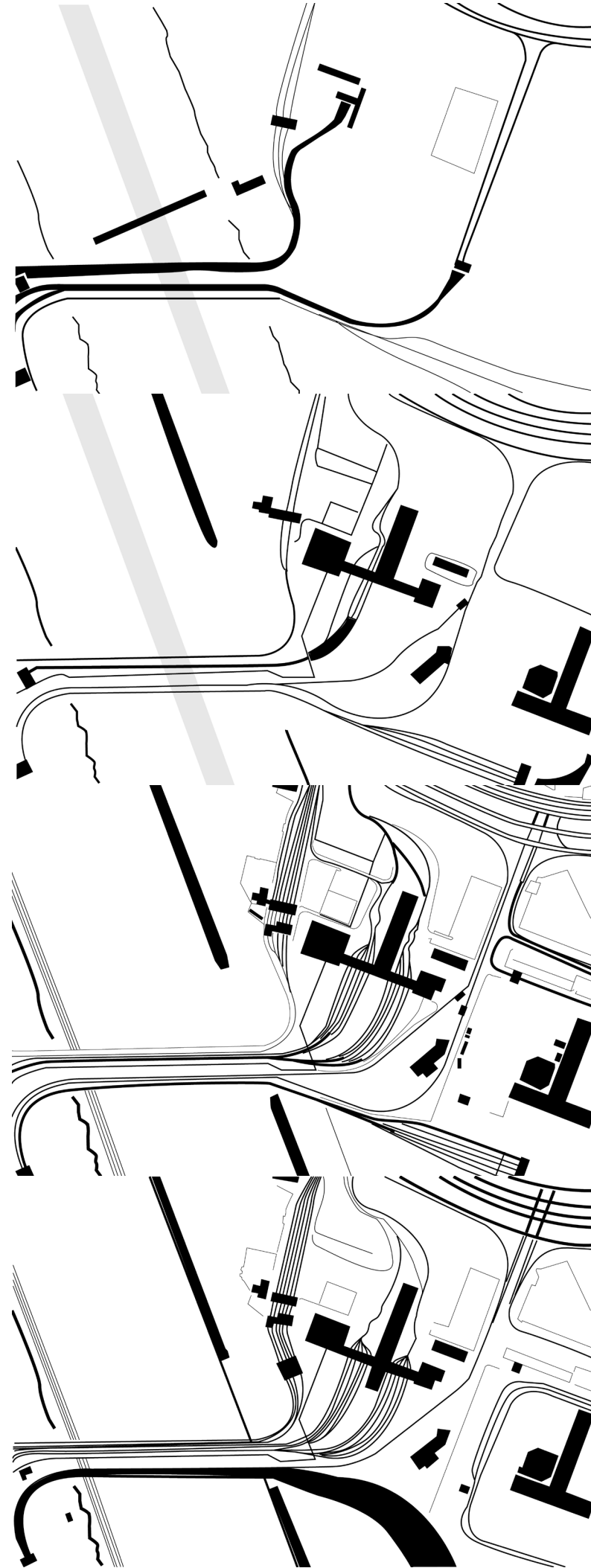
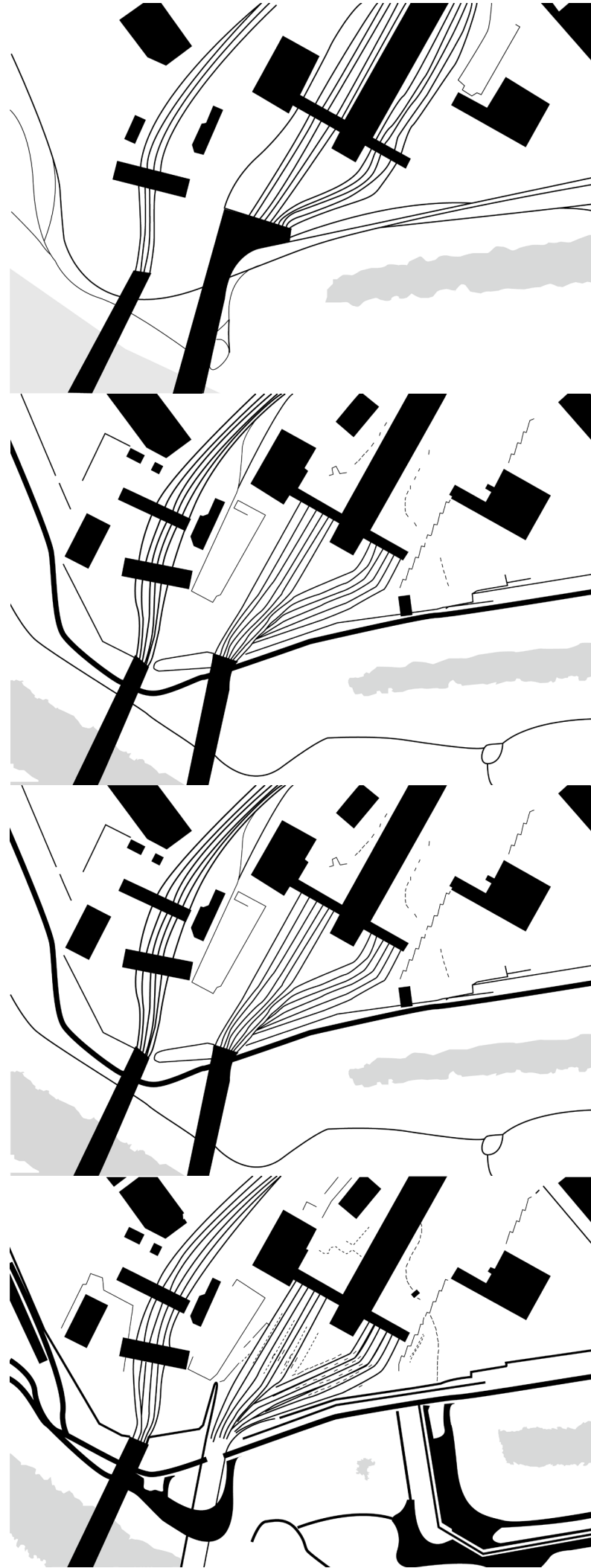
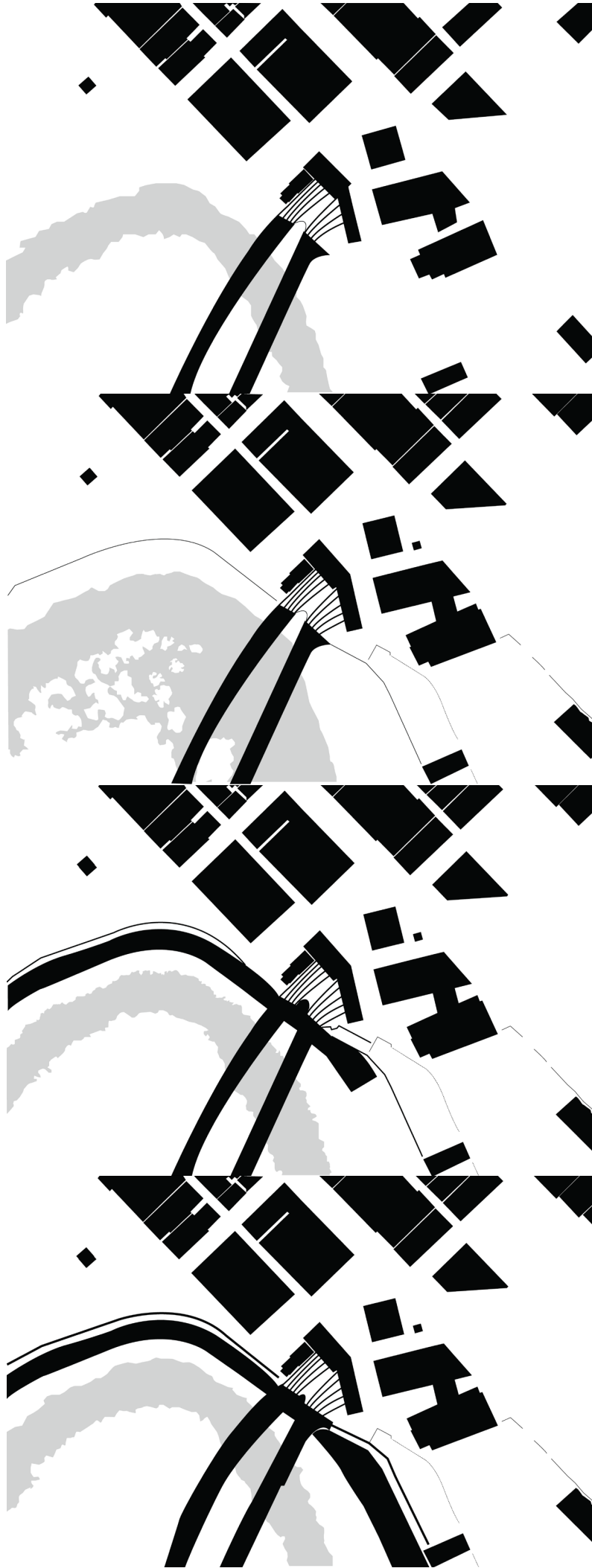
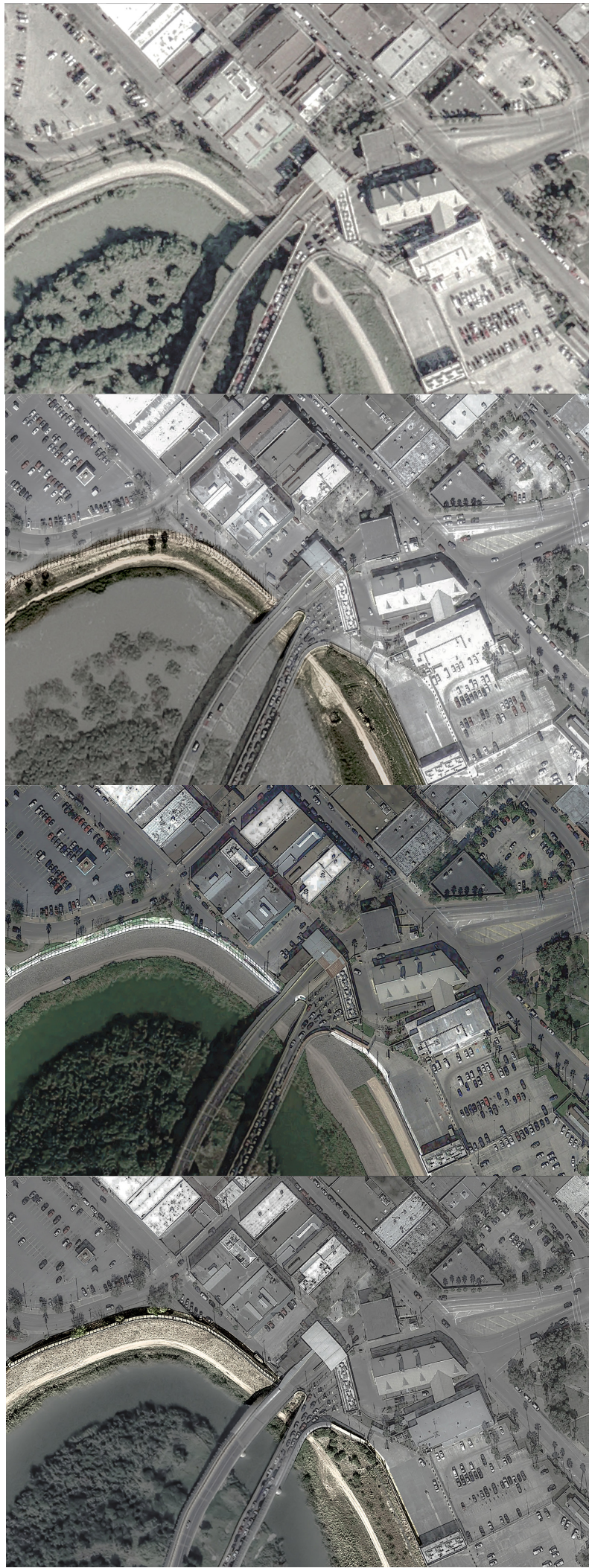
Can we convert this topographic aggression into a more appropriate demarcation and inspiration for people on both sides of the river?

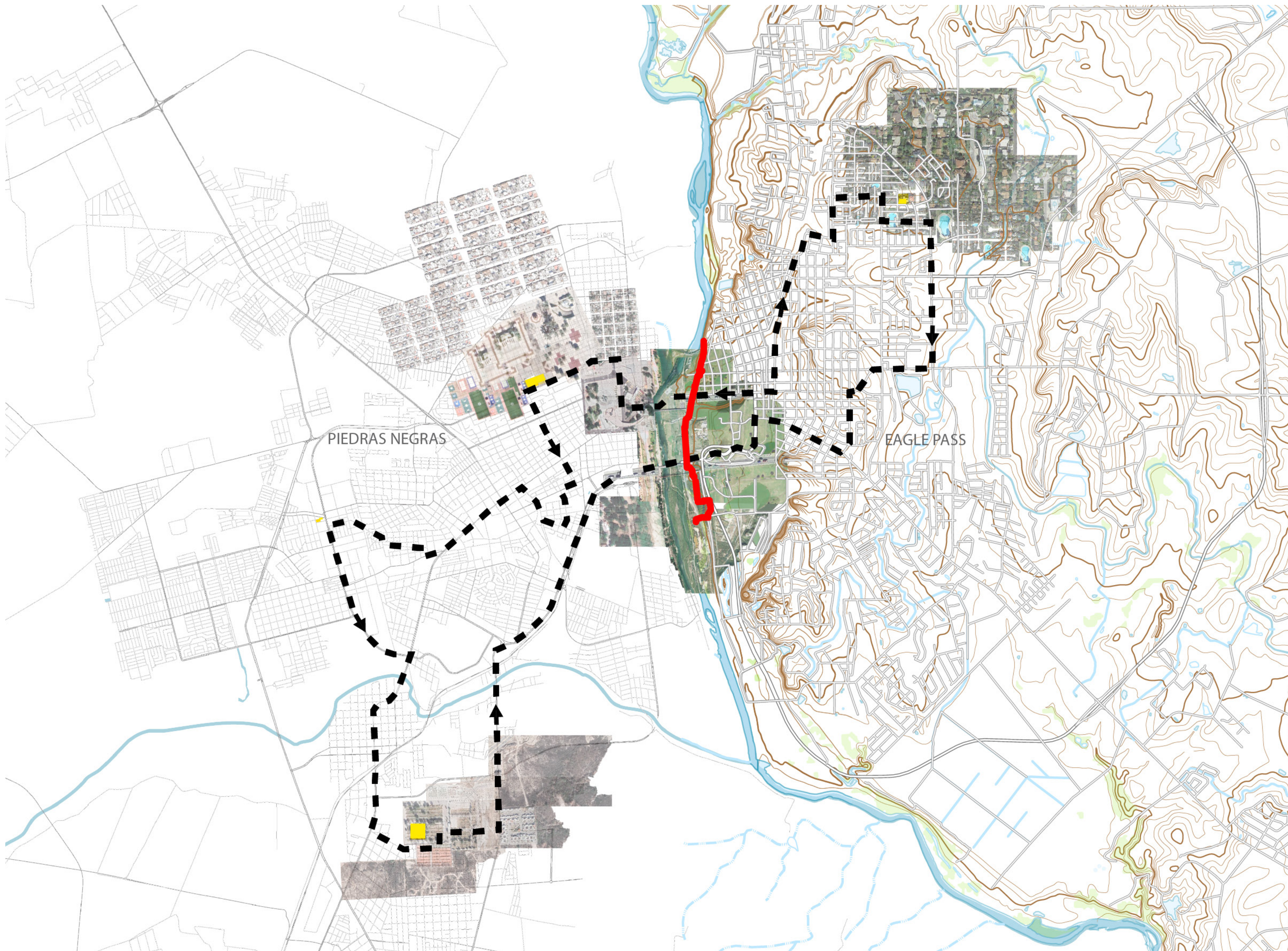


A series of Google Earth satellite images illustrates how the border's edge has thickened over a short period of time.

As Jackson wrote, "An abstraction, a Euclidean line drawn across the desert, has created two distinct human landscapes where there was only one before."

For border residents, crossing can be a daily ritual. A sophisticated network of decisions bifurcates almost every area of their lives.





Oralia Trevino Parra describes how her family carefully orchestrates their daily schedule around the most advantageous choices. These choices collectively make up a series of binational selections.

The daily, weekly, and monthly crossings illustrate a sophisticated network used to stitch the binational exchange of the Parra family into a single fabric.

