

HOUSES[®]

Kitchens + Bathrooms

**LAI DBACK
LIVING**

*Inspiring kitchens and
bathrooms by Australia's
leading designers*

ISSUE 18

\$19.95



9 771833 524001 02

Creative and compact

ROSANNA CERAVOLO

01

Faced with renovating a diminutive Victorian cottage in Hawthorn, this architect made the daring choice to abut bathroom and kitchen – with surprising results.

Words by Leanne Amodeo
Photography by Sean Fennessy

Architect Rosanna Ceravolo was faced with a very tight floor plan when renovating Amber, James and Dusty's (the couple's cute cavoodle) tiny Victorian cottage in the Melbourne suburb of Hawthorn. She didn't let that deter her, though, and she identified an opportunity to be as innovative as possible. "When size is a factor, it's helpful to create diversions through bold gestures, intricate detailing and plays of light," she says. "So while my designs are quite clean and simple aesthetically, there's also a dynamic quality that is manifested primarily through a considered approach to form, scale and light, and, secondarily, through a restrained material and colour selection."

This dynamism is especially prevalent in the kitchen, where a barrel vault ceiling detail draws the eye through to the rear yard. This vault works to extend the small space and creates a point of interest in the lowered ceiling that is contained within the pitched roof of the existing lean-to. Coupled with the brown feature tiles, the barrel vault also lends the thoughtfully considered space a European sensibility, reinforced in the use of Carrara benchtops and terrazzo flooring, and a colour palette that features sage green and a rich mustard-hued velvet upholstery on the dining area's banquette.

The scheme's most striking attribute follows Rosanna's decision to abut the bathroom and the kitchen. This daring move essentially ensured the two original rooms at the front of the cottage remained intact and located all services together at the rear of the house. "Given the tight floor plan, the kitchen and bathroom were in some ways forced up against each other. So I thought it would be fun to play one off the other, illuminating the bathroom from the inside out, which generates ambient lighting to the kitchen and dining zone," Rosanna explains.

The bathroom is concealed within a custom joinery partition with highlight-glazed steel blades. This clever idea lets light into the wet area while allowing the glow from within to permeate all living areas. Internally, the bathroom is long and narrow, so it was important to create a sense of spaciousness, which Rosanna achieved via the highlight glazing, a generously sized shower recess and low joinery unit. She didn't spare the playfulness either, with an oversized lilac mirror cabinet the perfect highlight among cream-coloured tiles. The connection between kitchen and bathroom might be unexpected, but in this newly modernized home, it's a welcome gesture that supports functionality and ease of living. ☺



02



03

- 1 Entry
- 2 Bedroom
- 3 Living room
- 4 Kitchen
- 5 Shower room
- 6 Laundry
- 7 Existing deck
- 8 Rear yard



Floor plan 1:400

0 5m

01 The kitchen's dynamic barrel vault ceiling detail draws the eye through to the rear yard.

02 Highlight glazing brings natural light into the bathroom while offering ambient light to the living spaces.

03 The large island bench coordinates movement between kitchen, bathroom and outdoor areas.



04

04 Clever storage includes a small bookshelf above the rear door.

05 Mustard-gold upholstery offsets the built-in joinery's cooler tones.

06 Brown wall tiles infuse the contemporary kitchen with a hint of retro charm.

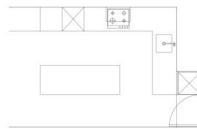


05

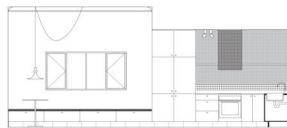


06

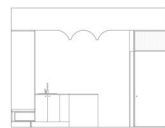
Kitchen products
Internal walls: MDF panels in Dulux 'Wombat Forest'; solid steel plate detailing; micromosaic splashback
Flooring: Hardware terrazzo floor tiles by Fibonacci
Joinery: Carrara stone benchtops; Laminex cupboards in 'Seed'; micromosaic splashback; Polytech laminata island bench in 'Natural White'; Orb knobs by Linear Standard
Lighting: Vintage Etude pendant by Holmegaard from Angelucci; Anton wall light by Volker Haug; Nea wall light by Kaia from In Good Company; Hay neon tube; Andro adjustable surface-mounted light by Ambience Lighting
Sinks and tapware: Astra Walker Icon tapware in 'Chrome'
Appliances: Fisher and Paykel fridge/freezer, dish drawer, gas on glass cooktop and oven
Other: Bonney table and Lola sofa and armchair by Järdan; Phillip Adams chair by Barbara Design; Insert side table by Ferm Living; Brighter Things vase by Jordan Fleming; custom banquette upholstered in Raf Simons for Kvadrat in 'Phlox'; artwork by Cameron Gill from Sophie Ganon Gallery



Kitchen plan 1:100 0 2m ©



Kitchen elevations 1:100





07



08

Bathroom products

Internal walls: De Fazio tessellated porcelain tiles in 'Off-White'; villa-board in Dulux 'Natural White'
Flooring: Hardware terrazzo floor tiles by Fibonacchi

Joinery: Opal resin storage cupboard by Marblo in 'Vanilla'; Carrara stone ledge

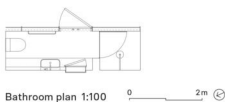
Lighting: Nies wall light by Kaia from In Good Company

Tapware and fittings: Icon tapware by Astra Walker; Cyrus wall-mounted basin by ABI Interiors

Sanitaryware: Caroma Invisi Series II in-wall cistern; Urbane Cleanflush wall-facing toilet

07 A Carrara stone ledge ties together the shower room and kitchen finishes.

08 An oversized mirror cabinet aligns with the bathroom door so sanitaryware won't be seen from the kitchen. Artwork: Ebony Russell.



Bathroom plan 1:100 0 2m



Bathroom elevations 1:100

Hawthorn Cottages is built on the land of the Wurundjeri Wol-wurrung people of the Kulin nation.
Location Melbourne, Vic

Architect
 Rosanna Ceravolo
 +61 421 495 472
 studio@rosannaceravolo.com
 rosannaceravolo.com

Project team Rosanna Ceravolo **Builifier** and joinery A.P. Build Group