

SEAMLESS LUMINESCENCE

ALINA FURSTENBERG, JEAN CHEN & ROBERTO ESQUENAZI ALKABES
MFA LIGHTING DESIGN STUDIO I
FACULTY: G. HESHMATI, C. SCIULLI, G. SHRUM

Table of Contents

Fixture Schedule	01
Cut Sheets	02
Design Illuminance Schedule	10
Luminaire Schedule & Calculations	11
Calculations	12
Comcheck	14
Floor Plan	17
Reflected Ceiling Plan	19
Control Plan	21
Control Schedule	23
Control Narrative	24
Rendering	25
Scene	28
Detailed Drawing	34

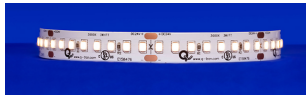
Fixture Schedule

Type	Name	Lighting Effect	Finish	Count	Fixture Description	Watts per Fixture	Dimension (inch)	Lumen Output, CCT, CRI	Manufacture Number	IES File
L-1	SW-HE24/1.5 ARKA Extrusion	Linear cove as wall washers softly illuminate workstation walls, reducing contrasts and shadows. This makes the place feel brighter and larger. Wall washers evenly illuminate the walls, making the workstation appear larger and more comfortable. They also add ambient lighting to complement task-oriented illumination. Wall washers' diffused lighting creates a more calm and appealing workspace, making it easier to focus.	N/A	852 ft	Linear Recessed	1.5/ft	0.47"W x 0.07"H	232, 3500K, 91	SW-HE24/1.5-DRY-35-BRL-BRL-WH-CL2-2"-768"	https://www.q-tran.com/Customer-Content/www/products/Files/sw-he24-1.5-IES.zip?d=713202151032
L-2	Z3SD-38 Square TrueZero360 Downlight Truly Subtle 3/8" Regress	Direct, focused lighting creates a task-oriented environment. These overhead lights evenly disperse light throughout the workspace, reducing shadows and glare. Even and consistent downlight lighting improves visibility for reading, writing, and utilizing electronic devices, promoting productivity. When placed properly, downlights can visually enlarge the workspace and create a well-lit, efficient environment that fosters attention and task performance.	White	56	Downlight	15	3.75L x 3.75W x 0.375H	3475, 3000K, 90	Z3SDF-38-15CS2-4827KH-35-S-WH-NC1-_-UNV-D7A-EM7	https://www.usalighting.com/site/download2.php?type=3640&attachment=file&name=TrueZero360+-+Z3SD-38&download%5B%5D=37954
L-3	THIN Suspension	N/A	Black Oxide	289	Linear Suspended	6.8	x 0.7W x 0.7H	600, 3000K, 90	JPR-THES-02-2-30-F-MM-R-EP	https://s3-us-east-2.amazonaws.com/myawsjuniper/wp-media-folder-juniper/wp-content/uploads/2019/02/JPR-THCH-THEW-THES-12in-Frosted.ies
L-4	THIN Task Lamp	N/A	Black Oxide	55	Task Light	7	39L x 7.5W x 27-50H	850, 3000K, 90	JPR-THSL-02	https://s3-us-east-2.amazonaws.com/myawsjuniper/wp-media-folder-juniper/wp-content/uploads/2019/02/JPR-THCH-THEW-THES-12in-Frosted.ies
L-5	Flawless-2 Wall Grazer	Wall Grazer for Feature Wall: creating visual display that highlights the organic textures and undulating contours of the wall, create a sense of depth and dimensionality, enhancing the wall's architectural details while adding a warm and inviting ambiance to the space.	Custom Wood Finish	12	Wall Grazer	10	4L x 2.6W x 4.8H	913, 3000K, 90	FLAWLESS-2-4-30-HIGH-UNV-DALI-CWF-T-4"RG-CCS-NA-WTW	https://coronetled.com/wp-content/uploads/2022/07/FLAWLESS2-LED-4FT-3500K-HIGH-UNV-DB.ies
L-6	MULTIPLE CHIME	Entrance Lounge: establishing a welcoming and stylish atmosphere while serving as focal points and functional lighting elements.	Maple	3	Decorative Pendant	176 + 240 + 226 = 642	64.1L x 63.2W x 79.62H	19893, 3000K, 94	MULTI-CHM-MA-MB-3000-010-SB-24"	N/A
L-7	DW-HE24/1.5 WIDE Extrusion	The dim LED stripe highlights the railing and the front desk.	N/A	133 ft	Stripe Light	1.5/ft	0.39"W x 0.05"H	178/ft, 3000K, 93	DW-HE24/1.5-DRY-20/30-CON6-C-ON6-BK-CL2-2"-384"	https://www.q-tran.com/Customer-Content/www/products/Files/DW-HE24-1.5-IES.zip?d=623202385808



SW-HE24/1.5

LED Strips - Static White High Efficacy



- High-efficacy, one bin, one step static white LED tape provides consistent color project to project with exceptional photometric qualities
- 8 diodes per 2" cut point
- Dry and wet-rated
- Field-cutttable up to 768"
- Ambient operating temp: -4-160°F
- Installation temp: 50-100°F | Storage temp: -4-140°F
- Calculated L70 = 66000 hrs

Stacks & Joules
Alina, Jean, Roberto
L-1
12/05/2023

①	②	③	④	⑤	⑥	⑦	⑧
V/WATTS	RATED	CCT - LUMENS/CRI	CONNECTOR/WIRE IN	CONNECTOR/WIRE OUT	WIRE COLOR	WIRE TYPE	ILLUMINATED LENGTH
SW-HE24/1.5							

Sample Part Number: SW-HE24/1.5-DRY-22-BW-CON24-WH-CL2-48"

① V/WATTS	② RATED	③ CCT - LUMENS/CRI	④ CONNECTOR/WIRE IN	⑤ CONNECTOR/WIRE OUT			
SW-HE24/1.5 Voltage: 24VDC Wattage: 1.5W/ft See last page for compatible power supplies.	DRY IP20	20 2000K 187/94 22 2200K 188/96 24 2400K 196/96 27 2700K 210/97 30 3000K 222/98 35 3500K 232/97 40 4000K 231/97	BW Bare Wire (Standard 24") BRL Barrel CLS Closed End (No feed) CON6 Connector 6" CON24 Connector 24" Connector/Wire In not needed to specify product. Typical selection is BW. BW: Standard length is 24". Max length is 120". Request custom length by writing in part number next to BW (example: BW48)	BW Bare Wire (Standard 24") BRL Barrel CLS Closed End (No feed) CON6 Connector 6" CON24 Connector 24" Connector/Wire Out not needed to specify product. Typical selection is CLS or BW. BW: Standard length is 24". Max length is 120". Request custom length by writing in part number next to BW (example: BW48)			
		DMP IP54			24 2400K 191/93 27 2700K 167/95 30 3000K 184/97 35 3500K 199/97 40 4000K 215/97	BW Bare Wire (Standard 24") BRL Barrel CON6 Connector 6" CON24 Connector 24" Connector/Wire In not needed to specify product. Typical selection is BW. BW: Standard length is 24". Max length is 120". Request custom length by writing in part number next to BW (example: BW48)	BW Bare Wire (Standard 24") BRL Barrel CLS Closed End (No feed) CON6 Connector 6" CON24 Connector 24" Connector/Wire Out not needed to specify product. Typical selection is CLS or BW. BW: Standard length is 24". Max length is 120". Request custom length by writing in part number next to BW (example: BW48)
					WET IP67		

⑥ WIRE COLOR	⑦ WIRE TYPE	⑧ ILLUMINATED LENGTH
WH White BK Black N/A Specify for Barrel Barrel is white	CL2 Class 2 CL2P Class 2 Plenum Rated N/A Specify for Barrel CL2P only available with bare wire leads (BW)	2"-768" 2" increments
WH White BK Black N/A Specify for Barrel Barrel is black	CL2 Class 2 CL2P Class 2 Plenum Rated N/A Specify for Barrel CL2P only available with bare wire leads (BW)	2"-180" 2" increments
WH White BK Black N/A Specify for Barrel Barrel is black	CL2 Class 2 CL2P Class 2 Plenum Rated N/A Specify for Barrel CL2P only available with bare wire leads (BW)	2"-360" 2" increments

5 year warranty | Warranty only valid with Q-Tran power supplies | Field modifications must comply with Q-Tran's installation methods otherwise warranty is null & void | All data has +/- 5% tolerance | UL Listed | Title 24 - JAB-2019 Strips: DRY and WET rated, 2000K and above

COMPATIBLE EXTRUSIONS

	WIDE	ROND	TORQ	TRE3	LALO	TALO	ARKA	TELA	VEVE	FLUR	EMBD	LATO	MDIN	OPTI	THIN
DRY	✓		✓	✓	✓	✓	✓	✓	✓	✓	✓	✓	✓	✓	✓
DMP	✓		✓	✓	✓	✓	✓	✓	✓	✓	✓	✓	✓	✓	✓
WET	✓														

TIER 3



HOW TO SPECIFY

TrueZero^{360™} - Z3SD 3" Square Downlight with Integral Driver

Stacks & Joules
Alina, Jean, Roberto
L-2
12/05/2023



Specify fixture part number. (All boxes must be filled in to correctly order)

Z3SD__	BeveLED Trim Style	Regress Choice	Wattage Options	LED Color Options	Beam Options	Lens Material	Finish Options	Housing Options	Extended Collar for Thick Ceilings	Voltage Options <i>Select one</i>	Dimming Driver Options	Emergency Battery Option
	F Trimmed with Flange (use with all materials) L Trimless Spackle-in (use with sheetrock and plaster only) M Millwork Knife-Edge (use with wood and stone)	00 Truly Zero 00° Flush glass lens trim, Zero regress (not available with F flanged trims) 38 Truly Subtle 3/8" Baffle trim, with 3/8" regress from ceiling plane	Classic White Light 09L3 9W LED 15L3 15W LED 20L3 20W LED 29L3 29W LED (29W is only available with the FG and FGCP housings) 35KH 3500K, 90+ CRI 40KS 4000K, 80+ CRI 40KH 4000K, 90+ CRI Warm Glow Dimming 15WG3 15W LED 20WG3 20W LED 2722KS 2700K-2200K, 80+ CRI 2722KH 2700K-2200K, 90+ CRI 3022KS 3000K-2200K, 80+ CRI 3022KH 3000K-2200K, 90+ CRI Color Select Tunable White 12CS1 12W LED 18CS1 18W LED (8) 15CS2 15W LED 6022KS 6000K-2200K, Tunable White Light 80+ CRI 4827KH 4800K-2700K, Tunable White Light 90+ CRI Note: Color Select option requires additional 0-10V dimming wires; see wiring diagrams for details	27KS 2700K, 80+ CRI 27KH 2700K, 90+ CRI 30KS 3000K, 80+ CRI 30KH 3000K, 90+ CRI 35KS 3500K, 80+ CRI 35KH 3500K, 90+ CRI 40KS 4000K, 80+ CRI 40KH 4000K, 90+ CRI 35 35° beam, round optic 45 45° beam 55 55° beam 60 60° beam	T25 25° beam T30 30° beam 35 35° beam 45 45° beam 60 60° beam	S Solite Glass	WH White edge detail for 0° regress, white trim for 3/8" regress BL Black edge detail for 0° regress, black trim for 3/8" regress BW Black baffle, White flange (3)	FT Flat Housing New Construction (1, 2, 4) FG Flat Glass Housing NC1 New Construction All-in-One (4) FTCT Flat Housing for Color Technologies (4) * For all of the above leave " " blank for standard housing) Add IC to end of housing codes listed above for insulation contact rated version (15W max for all except NC1C) * Add CP to end of housing codes listed above for Chicago Plenum rated version (not available with FTCT)	(leave blank for standard collar, accepts 1" thick ceiling maximum) 15 Extended collar accepts up to 1.5" thick ceilings maximum	UNV 120V-277V 120V	For use with Universal Voltage 120V - 277V <i>No Additional Charge</i> D6E EldoLED 0-10V, 1% (provided standard) D6F EldoLED 0-10V, 1% D4H Lutron H ECO, 1% Fade (1, 2, 5) D6A EldoLED 0-10V, 0.1% D6B EldoLED 0-10V, 0.1% D7A EldoLED DALI2, 0.1% D7B EldoLED DALI2, 0.1% D7E EldoLED DALI2, 1% D7F EldoLED DALI2, 1% D28 EldoLED DMX, 0.1% (5) D30 Lutron Athena wireless enabled with RF Node, 1% (1, 2, 6) For use with 120V only <i>No Additional Charge</i> D22 ERP Phase 2-wire, 1% (2, 4) D19 Phase 2-wire, 1% (1, 2, 4)	EM7 Emergency Battery (9) EM7W Emergency Battery Wet Location (9) EM7C Title 20 Compliant Emergency Battery (9) EM7CW Title 20 Compliant Emergency Battery Wet Location (9) *Optional Mounting Accessories CB27 27" C-Channel Bars CB32 32" C-Channel Bars CB52 52" C-Channel Bars * Residential grade nailer bars provided standard

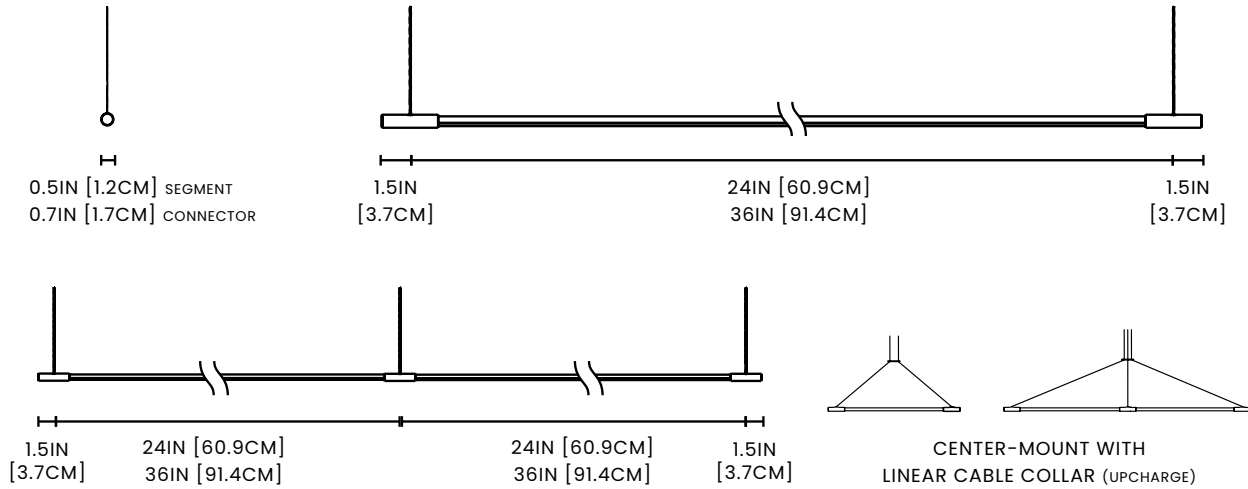
- Notes:
 1 Not available for Warm Glow.
 2 Not available for Color Select
 3 Not available with trimless (L) trims, millwork (M) trims, or 00 Regress; only available with 38 Regress flanged (F) style trims
 4 Not available with 29W
 5 Not available with FT housings
 6 NC1 housing only
 7 Not available with FGIC housing
 8 Not available with NC1C housings
 9 FG or NC1 housing only. Requires above ceiling access for service

Stacks & Joules
Alina, Jean, Roberto
L-3
12/05/2023

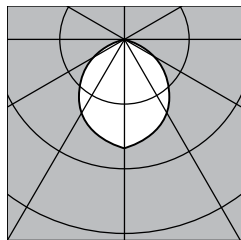
THIN SYSTEM PRODUCT GUIDE

4

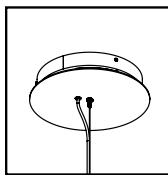
TECHNICAL | THIN Suspension



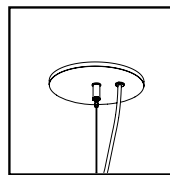
24IN AND 36IN LIGHT SEGMENTS MAY BE COMBINED IN THE SAME FIXTURE
STANDARD MAX LENGTH PER FIXTURE IS (3) 36" LIGHT SEGMENTS 110.8IN [281.5CM]
FOR LONGER RUNS, PLEASE CONTACT JUNIPER



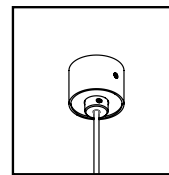
FROSTED LENS
90° BEAM ANGLE



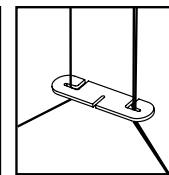
LOCAL CANOPY
7IN DIA X 2IN OR
12.5IN DIA X 2IN
(FOR 54W+)



**JUNCTION BOX
COVER PLATE**
5IN DIA X 0.5IN



**MINI CANOPY
(OPTIONAL)**
1.25IN DIA X
1.125IN



**CABLE COLLAR
(OPTIONAL)**
3.25IN X 0.75IN

ILLUMINATION

CRI 95+, R9 90+ standard
2700K, 3000K, 3500K, 4000K options
24" segment 600LM delivered
6.8W/segment
36" segment 920LM delivered
9.6W/segment
90LM/W
50,000 hrs LED life L80

POWER

24VDC output Class 2 constant
voltage power supply
120VAC or 220V input voltage for local
power supplies
Universal 120VAC-277VAC for remote
power supply

FINISHES

Satin Brass, Black Oxide, Satin Nickel

MATERIALS

Solid brass, PMMA

DIMMING

2-Wire/TRIAC/Forward Phase
0-10V
3-Wire
See Power Supply section for details
Contact Juniper for alternate
requirements

MOUNTING

10ft 1/16" aircraft cable, field
adjustable
16ft Clear-jacketed 22AWG co-axial
silver cord, field adjustable
Direct-mounting and center-
mounting with Linear Cable Collar
options available (for up to 2
connected segments)

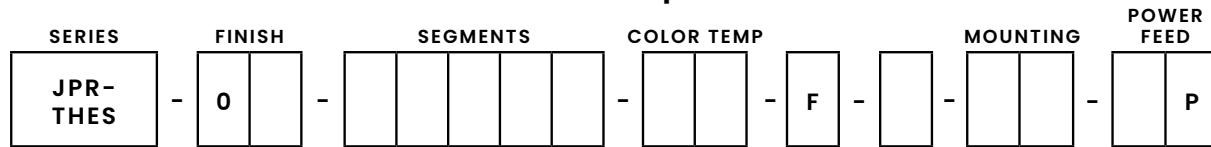
SYSTEM RUN

Limited by power supply wattage only

Designed by Peter Bristol & Juniper

UL eUL CE FC DAMP RATED ADA COMPLIANT

BUILD A SPECIFICATION | THIN Suspension



SAMPLE SKU: JPR-THES-01-00333-30-F-R-DM-CP
 Satin Brass, (3) connected 36" segments, 3000K, frosted lens, remote power supply, direct-mount to ceiling with a center power feed

CODE DEFINITIONS

FINISHES



01 Satin Brass **02** Black Oxide **03** Satin Nickel **40** Bronze

SEGMENTS

- 0** No Segment
- 2** 24 inch segment - 600LM delivered / 6.8W
- 3** 36 inch segment - 920LM delivered / 9.6W

Each digit represents a single segment, e.g. 00002 is (1) 24" segment. Contact Juniper for custom segment lengths.

COLOR TEMPERATURE

- 27** 2700K
- 30** 3000K
- 35** 3500K
- 40** 4000K

LENS

- F** Frosted - 90° beam angle

MOUNTING

- CX** Center-Mount to Canopy without Cable Collar
Includes corresponding canopy
- CC** Center-Mount to Canopy with Cable Collar (upcharge)
Includes corresponding canopy
- DM** Direct-Mount to Junction Box (Local or Remote)
Includes corresponding canopy for a single power cord with ceiling grippers for other mounting points
- MM** 2" Mini Mount | Direct-Mount to Ceiling (Remote Only)
Includes corresponding canopy for a single power cord with ceiling grippers for other mounting points

POWER SUPPLY OPTIONS

R. REMOTE

- STANDARD 120-277V INPUT - 2-WIRE/TRIAC/FORWARD PHASE/ELV
- STANDARD 120-277V INPUT - 0-10V
- LUTRON 120V INPUT - TRIAC DIMMING (40W) (UPCHARGE)
- LUTRON 120-277V INPUT - 3-WIRE (UPCHARGE)

L. LOCAL

- STANDARD 120-277V INPUT - TRIAC/0-10V/ELV DIMMING

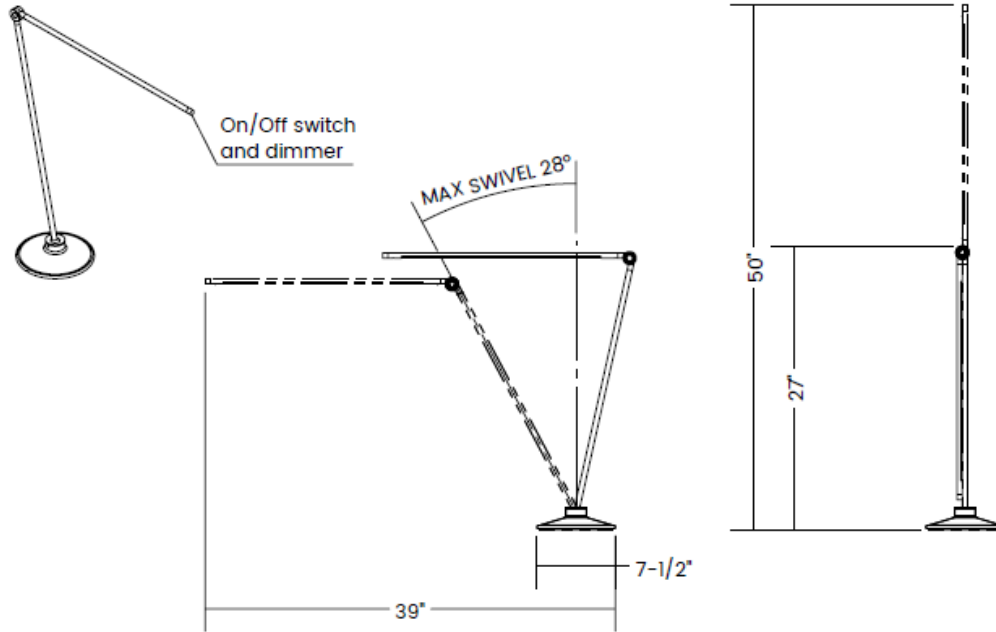
Our team will determine correct wattages for power supplies based on chosen configuration. Contact Juniper for custom requirements or further power supply specifications.

POWER FEED

- EP** End Power Feed
Located at the end of the fixture
- CP** Center Power Feed
Optional for 2+ Connected Segments

Project	Type
Notes	

JUNIPER®



Stacks & Joules
Alina, Jean, Roberto
L-4
12/05/2023

THIN TASK LAMP

SPECIFICATIONS

Color / Finish
Satin Brass

Size
THIN T (Tall)

MORE INFORMATION & OPTIONS

LIGHT QUALITY
0 CRI 95+, R9 90+ 32.00125

LED LIFESPAN
150,000 hrs, L80 32.00125

BODY MATERIAL
2 Solid Brass, PMMA
32.00125

CERTIFICATIONS
3 cUL, UL, CE, Damp
Location Rated, Title 24
32.00125

DESIGNER
4 Peter Bristol 32.00125

WATTAGE & LUMENS
5 S - 6W, 0-600LM
(Dimmable)
T - 7W, 0-850LM
(Dimmable) 44.50125

WEIGHT
6 S - 7 lbs
T - 11lbs 44.50125

CABLING
7.15m / 5ft Power Cord
44.50125

COLOR TEMPERATURE
8 3000K 44.50125



Stacks & Joules
Alina, Jean, Roberto
L-5
12/05/2023

a CarbonNeutral company

Flawless-2 wall grazer

Ordering Information

For each option group below specify one option. If you don't see your preferred option listed, contact us for [help](#).

1 Fixture ID	2 Length	3 Color Temperature	4 Output
FLAWLESS-2	2 2 ft 4 4 ft 8 8 ft X'-X" Specify Length PAT Pattern (Consult Factory)	27 2700K/90 CRI 30 3000K/90 CRI 35 3500K/90 CRI 40 4000K/90 CRI 50 5000K/90 CRI WD Warm Dim 2200K-3000K Must use WD10 driver. TW Tunable White 2700K-6500K Must use TW10 or PSQ driver.	LOW Low output MED Medium output HIGH High output CUST Custom output Specify Watts or lumens
5 Voltage	6 Driver	7 Finish	8 Mounting
UNV Universal (120/277V) 347V 347V Available for DB Driver only	DB Standard 0-10V 1% DB.1% 0-10V 0.1% ELV Reverse Phase 1% (120V only) For compatible dimmers see here . TRI Forward phase (120V only) For compatible dimmers see here . LDE Lutron Digital EcoSystem DALI DALI-2 Driver PoE Power over ethernet. TW10 Dual channel, 0-10V for tunable white. WD10 0-10V Warm Dim PSQ Lutron T-Series 2-channel 1% for tunable white DMX DMX512 All DMX drivers set to default address 001 and provided in remote enclosures. Contact us for other addressing needs	W White BLK Black SLV Silver CC Custom Color See finish options here . CWF Custom Wood Finish See finish options here .	T 9/16" Tee Grid T15 15/16" Tee Grid F Flange NT Mud-in Flange
9 Optics	10 Sensors/Controls	11 Circuit	12 Options
1" RG 1 inch regress 2" RG 2 inch regress 3" RG 3 inch regress 4" RG 4 inch regress	NA None ACM Acuity nLight Module Only CCS Casambi Module AWNRR Lutron Athena Wireless Node Module OTHER Consult Factory	NA None EMPCCK Emergency battery pack May require additional power feeds. EMCKT Emergency circuit May require additional power feeds. DAYCKT Daylight circuit May require additional power feeds.	NA None FC Field cuttable end See page 5 for details WH6 6ft whips preinstalled CP Chicago Plenum WTW Wall to wall end cap See page 6 for details

Performance

Output ¹	Watts/ft	Lumens/ft
Low	5	457
Medium	7	639
High	10	913

¹Based on 2" regress, 90 CRI, 3500K luminaire using one driver.
 Custom outputs available. Please consult factory.
 For 4000K multiply by 105, for 3000K, 0.9x, for 2700K, 0.92.

Technical Information



click [here](#) or scan QR code

Wiring diagrams, PoE and sensor details

Modification date: December 2023

Page 2 of 6

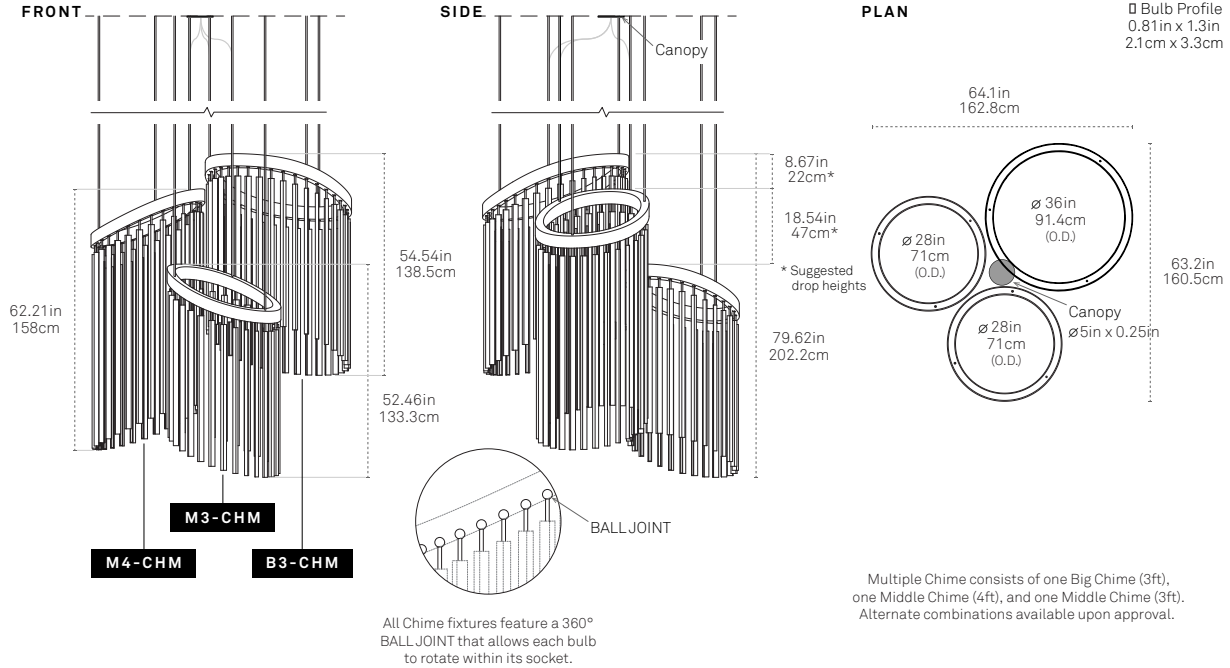


ORDERS@STICKBULB.COM | PHONE 347 460 2852

Stacks & Joules
Alina, Jean, Roberto
L-6
12/05/2023

MULTIPLE CHIME

MULTI-CHM



Multiple Chime consists of one Big Chime (3ft), one Middle Chime (4ft), and one Middle Chime (3ft). Alternate combinations available upon approval.

SPECIFY PRODUCT OPTIONS:

MODEL

MULTI-CHM

DESIGN

© 2019

MATERIALS

LED, Sustainably Sourced or Reclaimed Wood, Steel

FEATURES

Fully Dimmable
9 x 60-inch drop stems included
360° ball joint allows each bulb to rotate within its socket

CERTIFICATIONS



ORIGIN OF MANUFACTURE

New York City, USA

FIXTURE WEIGHT

197 lbs / 89.4 kg

SHIPPING DIMENSIONS

Shipping dimensions TBD based on order details.

LIGHT SPECIFICATION

Standard Brightness LEDs:
19,893 Lumens / 94 CRI (3000K) / 642W Power draw

WOOD

WOOD*

STANDARD

Maple **MA**
American Walnut **WA**
Ebonized Oak **EO**

PREMIUM

Heart Pine (Reclaimed)** **HP**
Water Tower Redwood (Reclaimed)** **WT**

* Custom options available upon approval.

** Our reclaimed woods exhibit variations in tone and grain.

METAL*

METAL RING FINISH

Matte Black Powder Coat** **MB**

** Matte Black canopy, black fabric chord

BALL JOINT FINISH

Polished Nickel **PN**

* Custom options available upon approval.

COLOR TEMP

COLOR TEMP

2400K **2400**
2700K **2700**
3000K (Standard) **3000**
4000K **4000**

DRIVER & DIMMING OPTIONS

0-10V dimming* **010**

* See Driver Information page.

For phase dimming options (Triac & ELV) please inquire.

LIGHT OUTPUT

Standard Brightness - 12V (Dimmable) **SB**

STEM LENGTH*

Segmented length of rigid steel stem ** **XX**
3/8" \varnothing (inches)

* See stem length guideline page to calculate stem length

** Length written in inches in corresponding box



DW-HE24/1.5

LED Strips - For Warm Dim Applications



Declare. UK CA



- High efficacy dynamic white linear LED strip for warm dim applications
- 14 diodes per 2" cut point
- 7 diodes per one color temperature
- Ambient operating temp: -4-160°F
- Installation temp: 50-100°F | Storage temp: -4-140°F
- Calculated L70 = 70000 hrs
- When using DALI and DMX power supplies, LED wattage must be doubled

Stacks & Joules
Alina, Jean, Roberto
L-7
12/05/2023

①	②	③	④	⑤	⑥	⑦	⑧
V/WATTS	RATED	CCT - LUMENS/CRI	CONNECTOR/WIRE IN	CONNECTOR/WIRE OUT	WIRE COLOR	WIRE TYPE	ILLUMINATED LENGTH
DW-HE24/1.5							

Sample Part Number: DW-HE24/1.5-DRY-20/27-BW-CLS-WH-CL2-200"

① V/WATTS	② RATED	③ CCT - LUMENS/CRI	④ CONNECTOR/WIRE IN	⑤ CONNECTOR/WIRE OUT
DW-HE24/1.5 Voltage: 24VDC Wattage: 1.5W/ft Using DALI, DMX, or non Q-Tran power supplies may double watts/ft. See last page for compatible power supplies.	DRY IP20	20/27 2000K/2700K 20/30 2000K/3000K 27/40 2700K/4000K 27/55 2700K/5500K	BW Bare Wire (Standard 24") CLS Closed End (No feed) CON6 Connector 6" CON24 Connector 24" Connector/Wire In not needed to specify product. Typical selection is BW. BW: Standard length is 24". Max length is 120". Request custom length by writing in part number next to BW (example: BW48)	BW Bare Wire (Standard 24") CLS Closed End (No feed) CON6 Connector 6" CON24 Connector 24" Connector/Wire Out not needed to specify product. Typical selection is CLS or BW. BW: Standard length is 24". Max length is 120". Request custom length by writing in part number next to BW (example: BW48)
	DMP IP54	24/30 2400K/3000K 27/40 2700K/4000K	BW Bare Wire (Standard 24") CON6 Connector 6" CON24 Connector 24" Connector/Wire In not needed to specify product. Typical selection is BW. BW: Standard length is 24". Max length is 120". Request custom length by writing in part number next to BW (example: BW48)	BW Bare Wire (Standard 24") CLS Closed End (No feed) CON6 Connector 6" CON24 Connector 24" Connector/Wire Out not needed to specify product. Typical selection is CLS or BW. BW: Standard length is 24". Max length is 120". Request custom length by writing in part number next to BW (example: BW48)
	WET IP67	20/27 2000K/2700K 20/30 2000K/3000K 27/40 2700K/4000K 27/55 2700K/5500K	BW Bare Wire (Standard 24") CON6 Connector 6" CON24 Connector 24" Connector/Wire In not needed to specify product. Typical selection is BW. BW: Standard length is 24". Max length is 120". Request custom length by writing in part number next to BW (example: BW48)	BW Bare Wire (Standard 24") CLS Closed End (No feed) CON6 Connector 6" CON24 Connector 24" Connector/Wire Out not needed to specify product. Typical selection is CLS or BW. BW: Standard length is 24". Max length is 120". Request custom length by writing in part number next to BW (example: BW48)

⑥ WIRE COLOR	⑦ WIRE TYPE	⑧ ILLUMINATED LENGTH
WH White BK Black	CL2 Class 2 CL2P Class 2 Plenum Rated CL2P only available with bare wire leads (BW)	2"-384" 2" increments
WH White BK Black	CL2 Class 2 CL2P Class 2 Plenum Rated CL2P only available with bare wire leads (BW)	2"-180" 2" increments
WH White BK Black	CL2 Class 2 CL2P Class 2 Plenum Rated CL2P only available with bare wire leads (BW)	2"-360" 2" increments

5 year warranty | Warranty only valid with Q-Tran power supplies | Field modifications must comply with Q-Tran's installation methods otherwise warranty is null & void | All data has +/- 5% tolerance | UL Listed | Consult factory for alternate Kelvin temperature | Title 24 - JAB-2019 Strips: DRY and WET rated, 2000K and above

COMPATIBLE EXTRUSIONS

	WIDE	ROND	TORQ	TRE3	LALO	TALO	ARKA	TELA	VEVE	FLUR	EMBD	LATO	MDIN	OPTI	THIN
DRY	✓	✓	✓	✓	✓	✓	✓	✓	✓	✓	✓	✓	✓	✓	✓
DMP	✓	✓	✓	✓	✓	✓	✓	✓	✓	✓	✓	✓	✓	✓	✓
WET	✓				✓	✓	✓	✓			EXCLUDES 30°, 45°, 60° LENS				NO LENS

Design Illuminance Schedule

	Space	Area (Unit: SF)	Function	Special Surfaces/objects/events	Lighting Purpose (in relation to concept)	Lighting Quality (in relation to concept)	Lighting Level (requirements to meet programmatic goals based on IES recommendations) (Unit: Lux)	Lighting Level Notes	Light Power Density (NYCECC 2020, space by space method)
7th Floor	Elevator Lobby on the 7th Floor	296	the first place that visitor land	feature wall	help the visitors to immediately locate the reception	accent	H: 50-100 V: 20-50	Eh @floor; Ev @5' AFF	
	Reception	194	to greet and help visitors	reception desk and feature wall	welcoming, enough lit for tasks	ambient, focal	H: 400 V: 150	N/A	
	Lounge/Guest Waiting Area	341	the waiting/greeting/chatting area for visitors and staff	sofa	welcoming, comfortable	ambient, accent	H: 200 V: 100	N/A	
	Staircase on the 7th Floor	397	to display and impress	feature wall	help displaying	accent	H: 50-100 V: 30-50	Eh @floor; Ev @4'-5' AFF	
	Corridor on the 7th Floor	237	passage		wayfinding	ambient	H: 50-100 V: 30	Eh @floor; Ev @5' AFF	
	Client Meeting Room	320	to host meetings with visitors	conference tables, projectors	satisfy all kinds of meeting situations	dimnable ambient	H: 30-300 V: 30-400	Eh @2' 6"-5'; Ev @2' 6"-6' 6" AFF	
	One Person Office on the 7th Floor 1	115	for staff to work, to showcase the office work environment	desk, computer screens	comfortable and task-oriented	ambient, focal	H: 150-500 V: 150	Eh @2'6"/height of device; Ev @4' AFF	
	One Person Office on the 7th Floor 2	115	for staff to work, to showcase the office work environment	desk, computer screens	comfortable and task-oriented	ambient, focal	H: 150-500 V: 150	Eh @2'6"/height of device; Ev @4' AFF	
	Computer Lab	171	private spaces for students to work	tables, computers	task-oriented	ambient, focal	H: 150-500 V: 150	Eh @2'6"/height of device; Ev @4' AFF	
	Light Lab	408	program-specific assemblies, mock-up area		flexible and adaptive	ambient	N/A	N/A	
	Workshop	2806	open, large space to host large classes	tables, projectors	uniformly luminated, a sense of openness	ambient	H: 1000 V: 500	Eh @3' AFF; Ev @4' AFF	0.91
6th Floor	Elevator Lobby on the 6th Floor	296	usually where staff come in	display	motivational	ambient	H: 50-100 V: 20-50	Eh @floor; Ev @5' AFF	
	Pantry	177	to store food, where staff can have lunch or coffee, a mini kitchenette	kitchenette, coffee machine, refrigerator, microwave, sink	enough light for tasks, relaxing	ambient	H: 100 V: 30	Eh @floor; Ev @4' AFF	
	Staircase on the 6th Floor	321	to connect with the 7th floor	feature wall	help connect to the 7th floor	accent	H: 50-100 V: 30-50	Eh @floor; Ev @4'-5' AFF	
	Two-Person Office	129	for staff to work	desks, computer screens	comfortable and task-oriented	ambient, focal	H: 150-500 V: 150	Eh @2'6"/height of device; Ev @4' AFF	
	Five-Person Office	176	for staff to work	desks, computer screens	comfortable and task-oriented	ambient, focal	H: 150-500 V: 150	Eh @2'6"/height of device; Ev @4' AFF	
	Executive Office	232	for staff to work	desks, computer screens	comfortable and task-oriented	ambient, focal	H: 150-500 V: 150	Eh @2'6"/height of device; Ev @4' AFF	
	One-Person Office on the 6th Floor	102	for staff to work	desks, computer screens	comfortable and task-oriented	ambient, focal	H: 150-500 V: 150	Eh @2'6"/height of device; Ev @4' AFF	
	Four-Person Meeting Room	165	for staff to have meetings	conference tables, projectors	satisfy all kinds of meeting situations	dimnable ambient	H: 30-300 V: 30-400	Eh @2' 6"-5'; Ev @2' 6"-6' 6" AFF	
	Seven-Person Meeting Room	270	for staff to have meetings	conference tables, projectors	satisfy all kinds of meeting situations	dimnable ambient	H: 30-300 V: 30-400	Eh @2' 6"-5'; Ev @2' 6"-6' 6" AFF	
	Five-Person Meeting Room	153	for staff to have meetings	conference tables, projectors	satisfy all kinds of meeting situations	dimnable ambient	H: 30-300 V: 30-400	Eh @2' 6"-5'; Ev @2' 6"-6' 6" AFF	
	Mother's Room	35	to relax	sofa	comfortable and relaxing	dimnable ambient	H: 100 V: 30	Eh @2' 6"; Ev @4' AFF	
	Phone/Zoom Room 1	35	where staff make phonecalls or do individual zoom meetings, small and private workspaces, acoustic	desks	a sense of privacy	ambient	H: 150-500 V: 150	Eh @2'6"/height of device; Ev @4' AFF	
	Phone/Zoom Room 2	41	where staff make phonecalls or do individual zoom meetings, small and private workspaces, acoustic	desks	a sense of privacy	ambient	H: 150-500 V: 150	Eh @2'6"/height of device; Ev @4' AFF	
Corridor on the 6th Floor	377	passage		wayfinding	ambient	H: 50-100 V: 30	Eh @floor; Ev @5' AFF		
Copy/Print Area	168	to copy and print and organize files	machines, documents, stationeries	task-oriented	ambient	H: 100-300 V: 30-100	Eh @floor/3' 6"; Ev @3' 6"-5' AFF		
Open Workspace	2731	for staff to work	desks, computer screens	uniformly luminated, help productivity	ambient, focal	H: 150-500 V: 150	Eh @3'AFF; Ev @4'AFF		

Luminaire Schedule

Type	Count	Manufac.	Type Name	Luminaire Description	IES File	LLF	Total lumens	Watts	Volts
L-1	902	Q-Tran	Linear LED	SW-HE24-1.5-DRY-35	SW-HE24-1.5-DRY-35(1)	0.9	231.5	1.44	N/A
L-2	57	USAI	Recessed Downlight	Recessed Downlight	Z3SD-38-15CS2-4827KH-45-S-WH-3000K-MOD	0.9	918.3	15	N/A
L-3	660	Juniper	Linear Suspended	JPR-THEW/S 12" - Frosted	JPR-THCH-THEW-THE-S 12in-Frosted (2)	0.9	310.7	3.96	N/A
L-5	11	Coronet Inc	Wall Grazer	Linear Luminaire	FLAWLESS2-LED-4FT-3500K-HIGH-UNV-DB	0.9	3277.8	40	N/A
L-6	3	StickBulb	Multiple Chime	N/A	MSx-35W32LED3K-G3-LE2F	0.9	4685.1	37	N/A

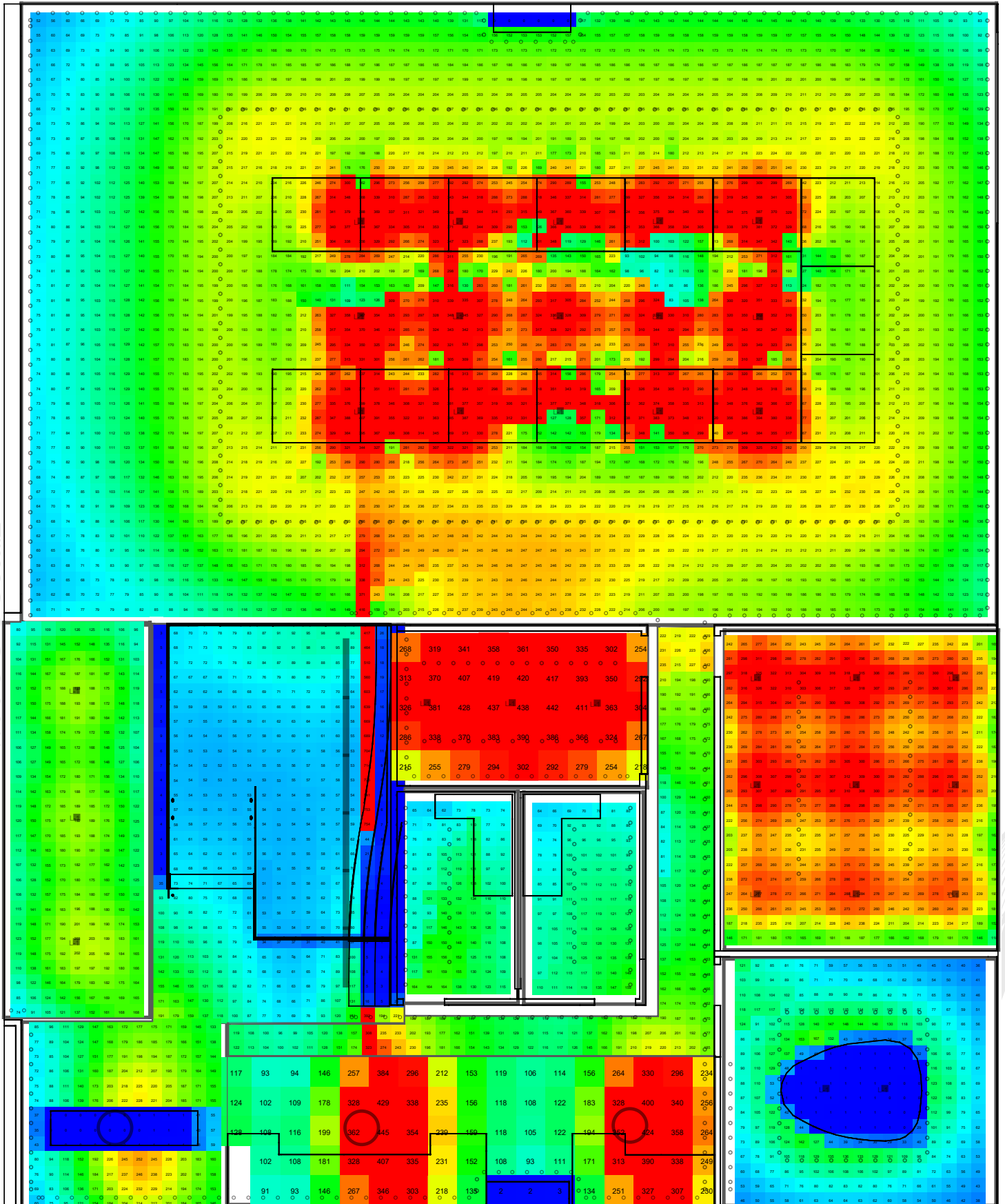
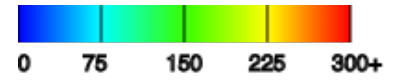
Calculations

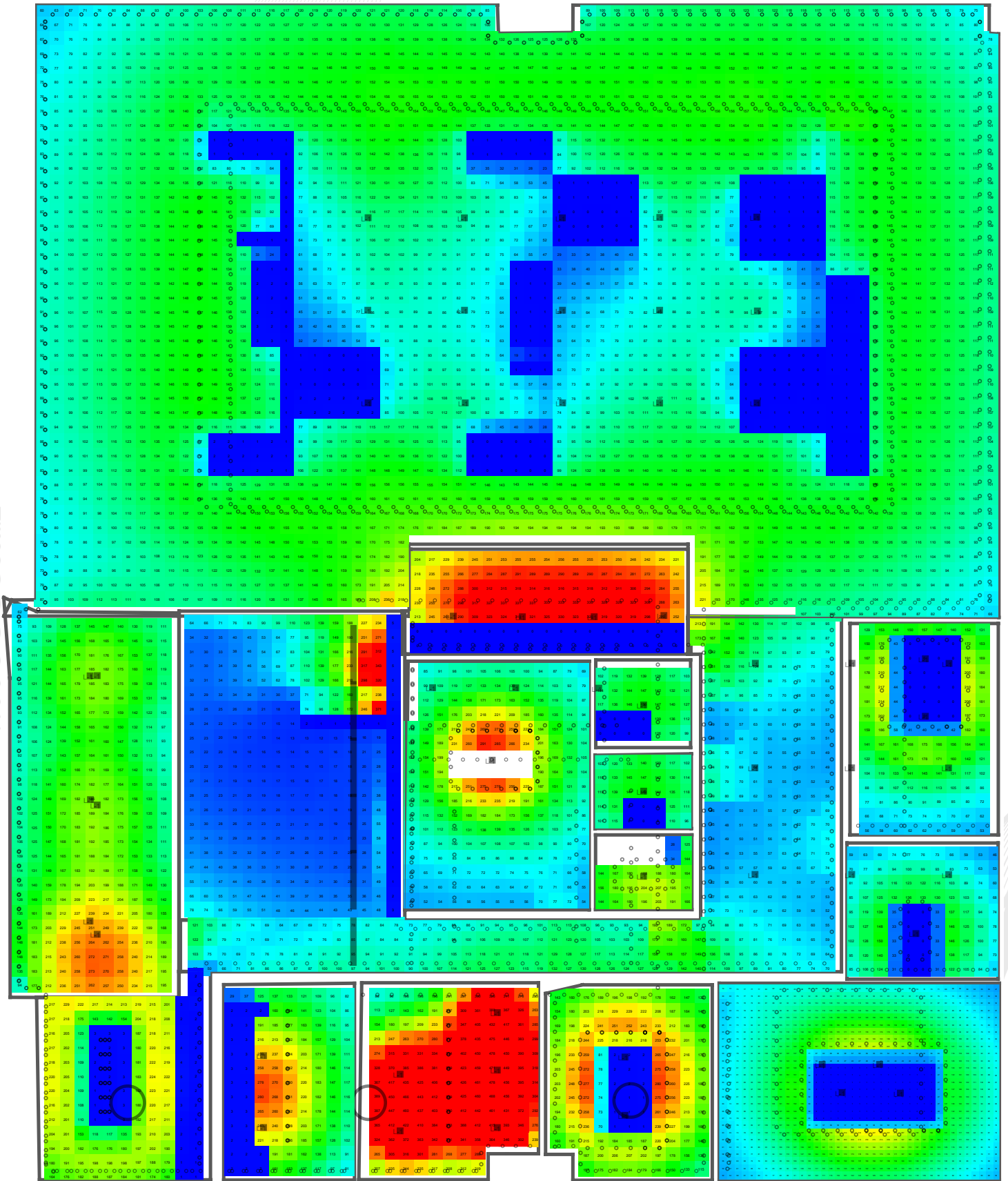
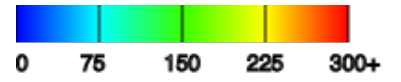
Name	Area (sq ft)	IES Recommendation (lux)	Avg (lux)	Max (lux)	Min (lux)
Workshop	2798.13	H: 1000 V: 500	201.41	416.12	0.25
Elevator Lobby	266.48	H: 50-100 V: 20-50	152.6	205.24	74.23
Staircase	459	H: 50-100 V: 30-50	78.78	753.88	0.13
Reception	174.53	H: 400 V: 150	126.76	252.3	0.23
Guest Lounge / Waiting Area	331.9	H: 200 V: 100	213.79	444.92	2.19
Corridor	181.22	H: 50-100 V: 30	158.55	323.2	80.76
Computer Lab	186.99	H: 150-500 V: 150	339.93	442	215.14
Office	116.94	H: 150-500 V: 150	111.72	164.07	62.08
Office	116.94	H: 150-500 V: 150	105.14	159.21	64.41
Light Lab	404.35	N/A	257.99	325.9	118.29
Client Meeting Room	309.82	H: 30-300 V: 30-400	68.12	166.94	0.25

7th Floor Calculations

Name	Area (sq ft)	IES Recommendation (lux)	Avg (lux)	Max (lux)	Min (lux)
Copy/ Print Area	143.19	H: 100-300 V: 30-100	202.86	333.35	0
Corridor	373.65	H: 50-100 V: 30	85.5	212.84	43.94
Phone/Zoom Room	40.26	H: 150-500 V: 150	99.1	149.63	0.03
Phone/Zoom Room	34.5	H: 150-500 V: 150	103.62	149.04	0.07
Mother's Room	34.84	H: 100 V: 30	163.78	206.69	27.85
Office	219.71	H: 150-500 V: 150	126.96	290.64	49.03
Meeting Room	151.87	H: 30-300 V: 30-400	101.65	217.24	0.14
Meeting Room	99.64	H: 30-300 V: 30-400	82.26	149.68	0.07
Meeting Room	267.15	H: 30-300 V: 30-400	94.76	227.18	0.23
Meeting Room	153.57	H: 30-300 V: 30-400	172.92	280.15	0.87
Office	163.58	H: 150-500 V: 150	336.9	488.34	87.84
Office	124.21	H: 150-500 V: 150	130.19	280.18	2.15
Pantry	156.36	H: 100 V: 30	126.48	228.76	0.66
Elevator Lobby	317.38	H: 50-100 V: 20-50	162.17	272.95	62.19
Staircase	337.55	H: 50-100 V: 30-50	50.94	371.22	0.52
Open Workspace	2742.34	H: 150-500 V: 150	105.62	236.11	0.07

6th Floor Calculations





Proposed Interior Lighting Power

A	B	C	D	E
Fixture ID : Description / Lamp / Wattage Per Lamp / Ballast	Lamps/ Fixture	# of Fixture	Fixture Watt.	(C X D)
1-Elevator Lobby (Common Space Types:Lobby For Elevator)				
LED: L-1: Linear Recessed: Other:	1	62	2	93
LED: L-2: Downlight: Other:	1	6	15	90
2-Reception (Common Space Types:Lobby - General)				
LED: L-1: Linear Recessed: Other:	1	63	2	94
LED: L-6: Pendant: Other:	1	1	642	642
LED: L-7: Stripe Light: Other:	1	11	2	16
3-Pantry (Common Space Types:Dining Area - General)				
LED: L-3: Linear Suspended: Other:	1	9	7	61
4-Light Lab (Common Space Types:Classroom/Lecture/Training)				
LED: L-2: Downlight: Other:	1	9	15	135
LED: L-3: Linear Suspended: Other:	1	14	7	95
5-Five-Person Meeting Room (Common Space Types:Conference/Meeting/Multipurpose)				
LED: L-1: Linear Recessed: Other:	1	10	2	15
LED: L-2: Downlight: Other:	1	2	15	30
LED: L-3: Linear Suspended: Other:	1	12	7	82
6-Seven-Person Meeting Room (Common Space Types:Conference/Meeting/Multipurpose)				
LED: L-1: Linear Recessed: Other:	1	13	2	20
LED: L-2: Downlight: Other:	1	2	15	30
LED: L-3: Linear Suspended: Other:	1	16	7	109
7-Four-Person Meeting Room (Common Space Types:Conference/Meeting/Multipurpose)				
LED: L-1: Linear Recessed: Other:	1	11	2	16
LED: L-2: Downlight: Other:	1	2	15	30
LED: L-3: Linear Suspended: Other:	1	14	7	95
8-Client Meeting Room (Common Space Types:Conference/Meeting/Multipurpose)				
LED: L-1: Linear Recessed: Other:	1	10	2	15
LED: L-2: Downlight: Other:	1	2	15	30
LED: L-3: Linear Suspended: Other:	1	20	7	136
9-Copy/Print Area (Common Space Types:Copy/Print Room)				
LED: L-1: Linear Recessed: Other:	1	23	2	34
LED: L-2: Downlight: Other:	1	3	15	45
LED: L-7: Stripe Light: Other:	1	21	2	32
10-Mother's Room (Common Space Types:Lounge/Breakroom)				
LED: L-2: Downlight: Other:	1	1	15	15
LED: L-3: Linear Suspended: Other:	1	6	7	41
11-Open Workspace (Common Space Types:Office - Open Plan)				
LED: L-1: Linear Recessed: Other:	1	165	2	248
LED: L-3: Linear Suspended: Other:	1	74	7	503
12-Phone/Zoom Room 2 (Common Space Types:Office - Enclosed)				
LED: L-1: Linear Recessed: Other:	1	6	2	9
LED: L-2: Downlight: Other:	1	1	15	15
13-Phone/Zoom Room 1 (Common Space Types:Office - Enclosed)				
LED: L-1: Linear Recessed: Other:	1	5	2	8
LED: L-2: Downlight: Other:	1	1	15	15
14-One-Person Office on the 6th Floor (Common Space Types:Office - Enclosed)				
LED: L-1: Linear Recessed: Other:	1	10	2	15
LED: L-2: Downlight: Other:	1	1	15	15
LED: L-3: Linear Suspended: Other:	1	6	7	41
15-Executive Office (Common Space Types:Office - Enclosed)				
LED: L-1: Linear Recessed: Other:	1	17	2	26
LED: L-2: Downlight: Other:	1	1	15	15
LED: L-3: Linear Suspended: Other:	1	10	7	68

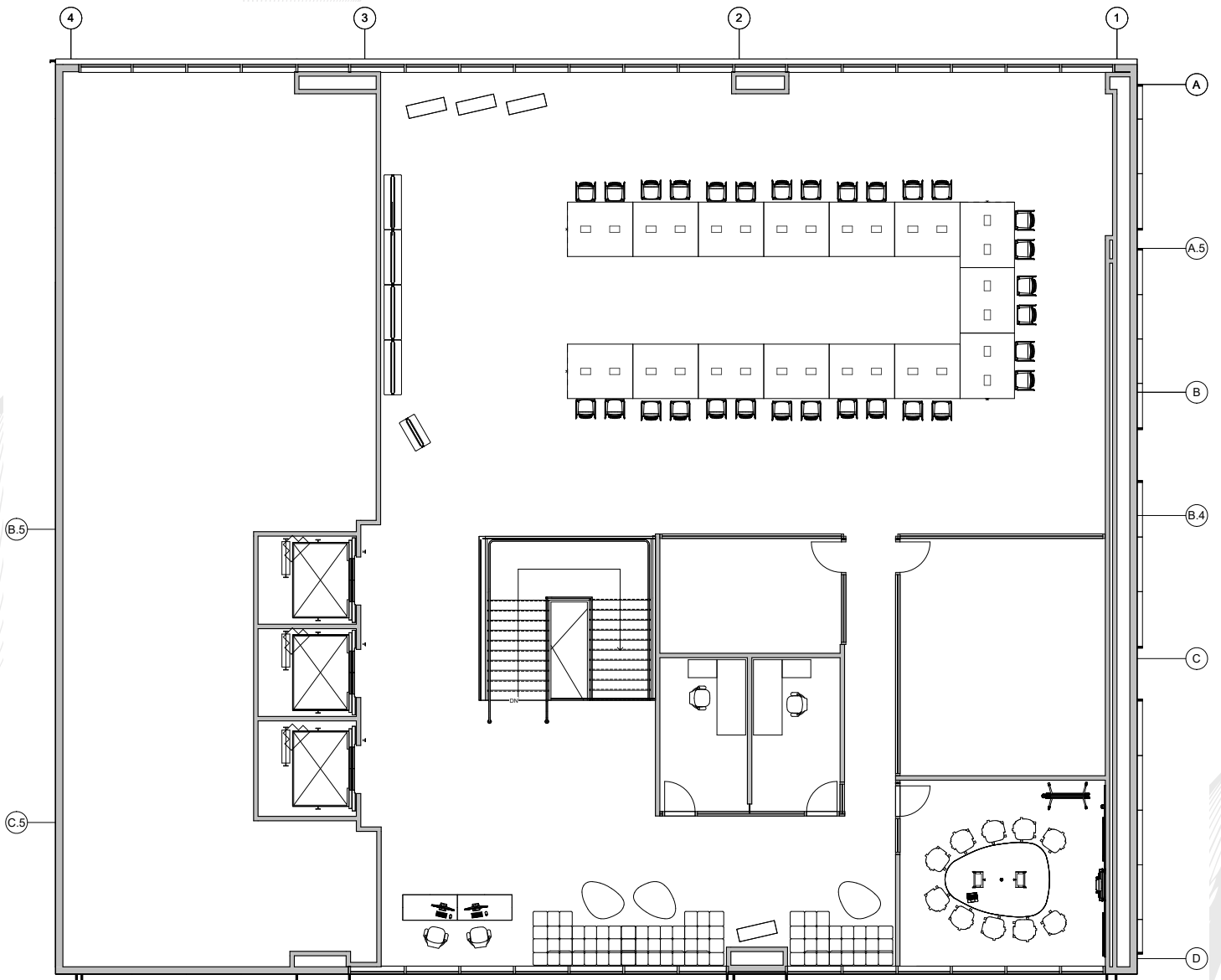
A Fixture ID : Description / Lamp / Wattage Per Lamp / Ballast	B Lamps/ Fixture	C # of Fixture	D Fixture Watt.	E (C X D)
<u>16-Five-Person Office (Common Space Types:Office - Enclosed)</u>				
LED: L-1: Linear Recessed: Other:	1	9	2	14
LED: L-2: Downlight: Other:	1	5	15	75
LED: L-3: Linear Suspended: Other:	1	5	7	34
<u>17-Two-Person Office (Common Space Types:Office - Enclosed)</u>				
LED: L-1: Linear Recessed: Other:	1	9	2	14
LED: L-2: Downlight: Other:	1	2	15	30
LED: L-3: Linear Suspended: Other:	1	5	7	34
<u>18-One-Person Office on the 7th Floor (Common Space Types:Office - Enclosed)</u>				
LED: L-1: Linear Recessed: Other:	1	28	2	42
LED: L-3: Linear Suspended: Other:	1	10	7	68
<u>19-Loung/Guest Waiting Area (Common Space Types:Lounge/Breakroom)</u>				
LED: L-1: Linear Recessed: Other:	1	63	2	94
LED: L-6: Decorative Pendant: Other:	1	2	642	1284
<u>20-Corridor on the 6th Floor (Common Space Types:Corridor/Transition >=8 ft wide)</u>				
LED: L-1: Linear Recessed: Other:	1	45	2	68
<u>21-Corridor on the 6th Floor (Common Space Types:Corridor/Transition <8 ft wide)</u>				
LED: L-1: Linear Recessed: Other:	1	66	2	99
<u>22-Corridor on the 7th Floor (Common Space Types:Corridor/Transition <8 ft wide)</u>				
LED: L-1: Linear Recessed: Other:	1	85	2	128
<u>23-Computer Lab (Common Space Types:Classroom/Lecture/Training)</u>				
LED: L-1: Linear Recessed: Other:	1	25	2	38
LED: L-2: Downlight: Other:	1	3	15	45
LED: L-3: Linear Suspended: Other:	1	14	7	95
<u>24-Workshop (Common Space Types:Workshop)</u>				
LED: L-1: Linear Recessed: Other:	1	190	2	285
LED: L-2: Downlight: Other:	1	15	15	225
LED: L-3: Linear Suspended: Other:	1	74	7	503
<u>25-Staircase on the 7th Floor (Common Space Types:Stairwell)</u>				
LED: L-5: Wall Grazer: Other:	1	6	10	60
LED: L-7: Stripe Light: Other:	1	51	2	76
<u>26-Stairecase on the 6th Floor (Common Space Types:Stairwell)</u>				
LED: L-5: Wall Grazer: Other:	1	6	10	60
LED: L-7: Stripe Light: Other:	1	51	2	76
Total Proposed Watts =				6425

Interior Lighting PASSES: Design 39% better than code

Interior Lighting Compliance Statement

Compliance Statement: The proposed interior lighting design represented in this document is consistent with the building plans, specifications, and other calculations submitted with this permit application. The proposed interior lighting systems have been designed to meet the 2016 New York City Energy Conservation Code requirements in COMcheck Version COMcheckWeb and to comply with any applicable mandatory requirements listed in the Inspection Checklist.

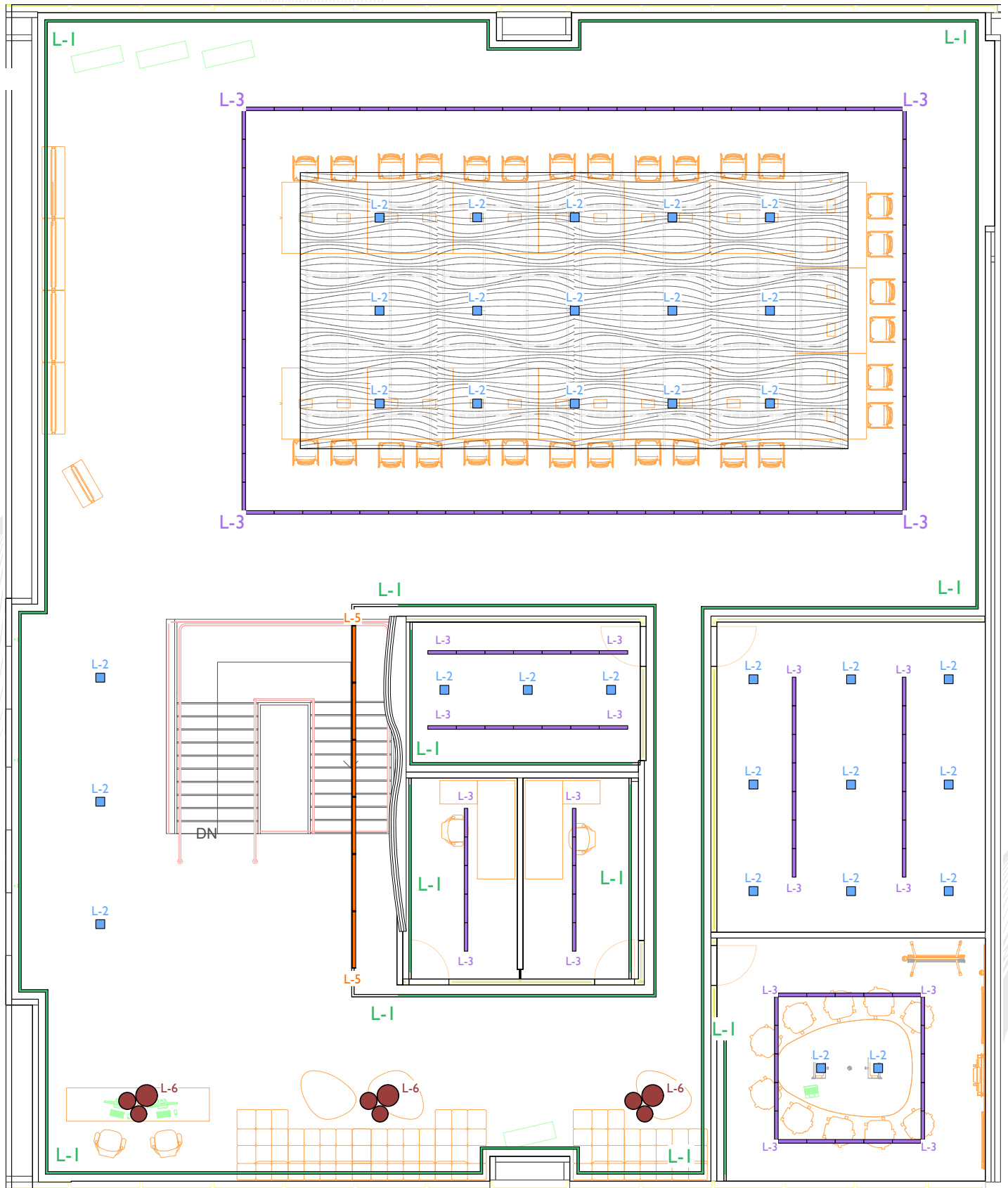
Name - Title _____ Signature _____ Date _____



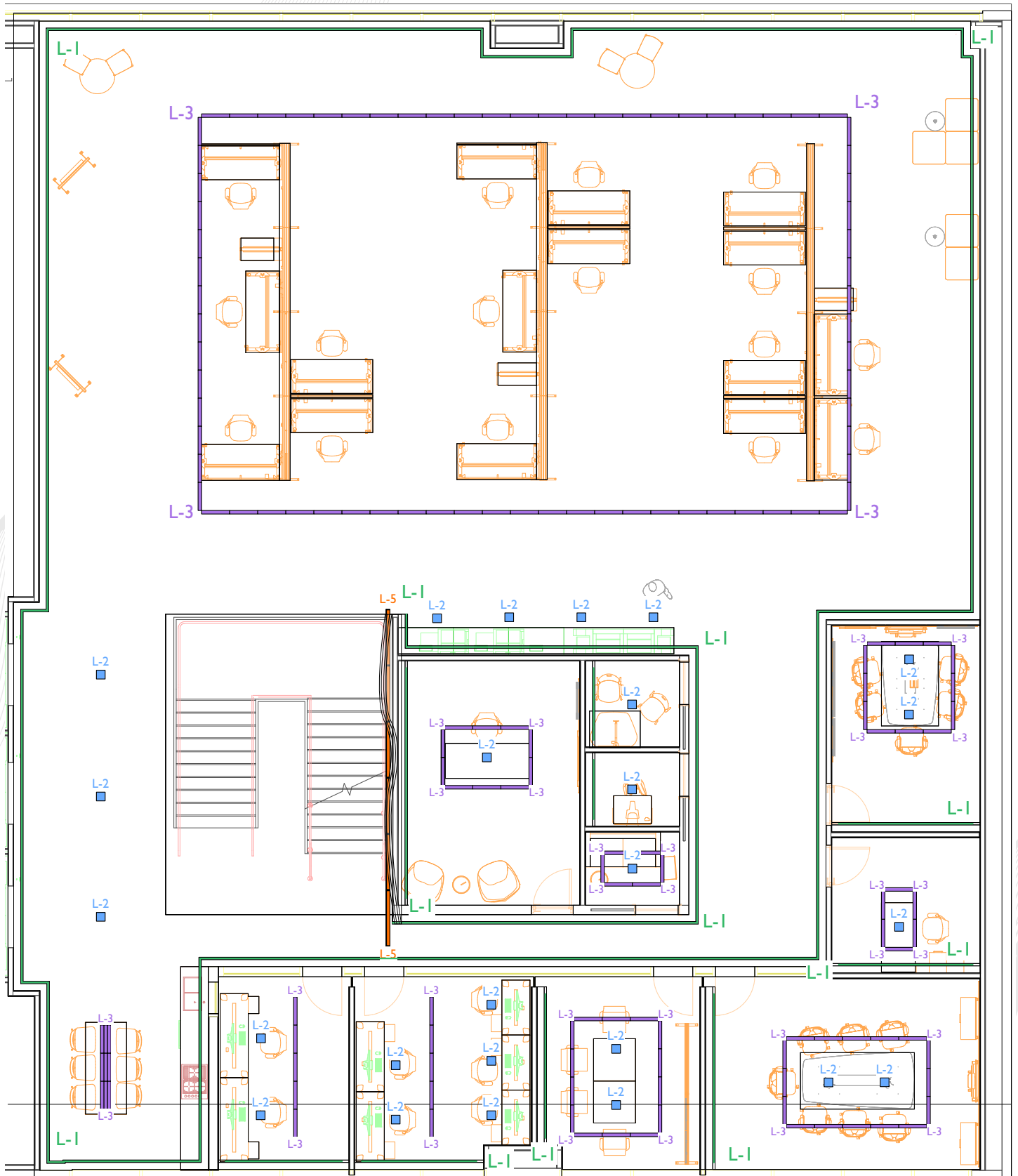


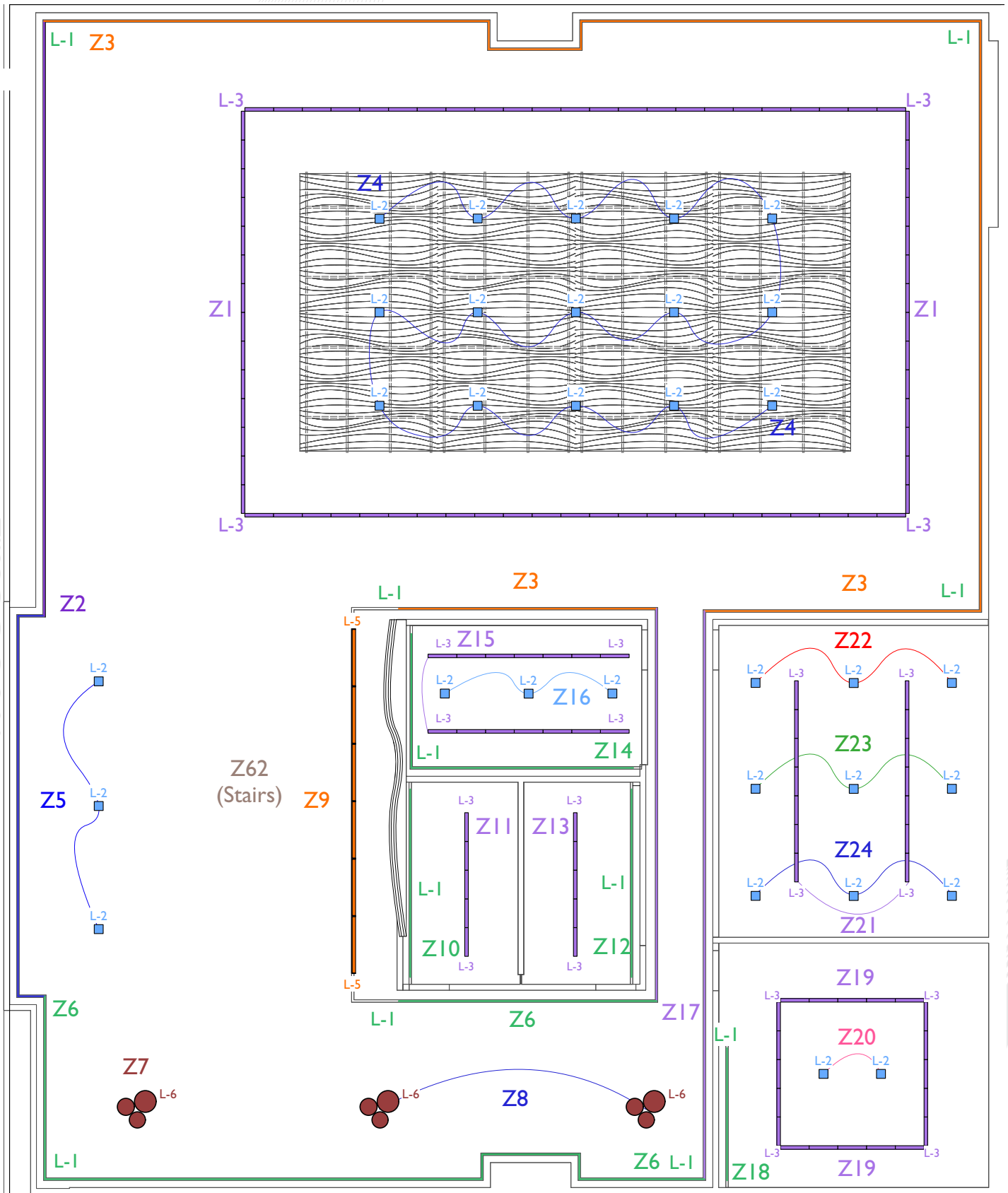
6th Floor Plan

Reflected Ceiling Plan

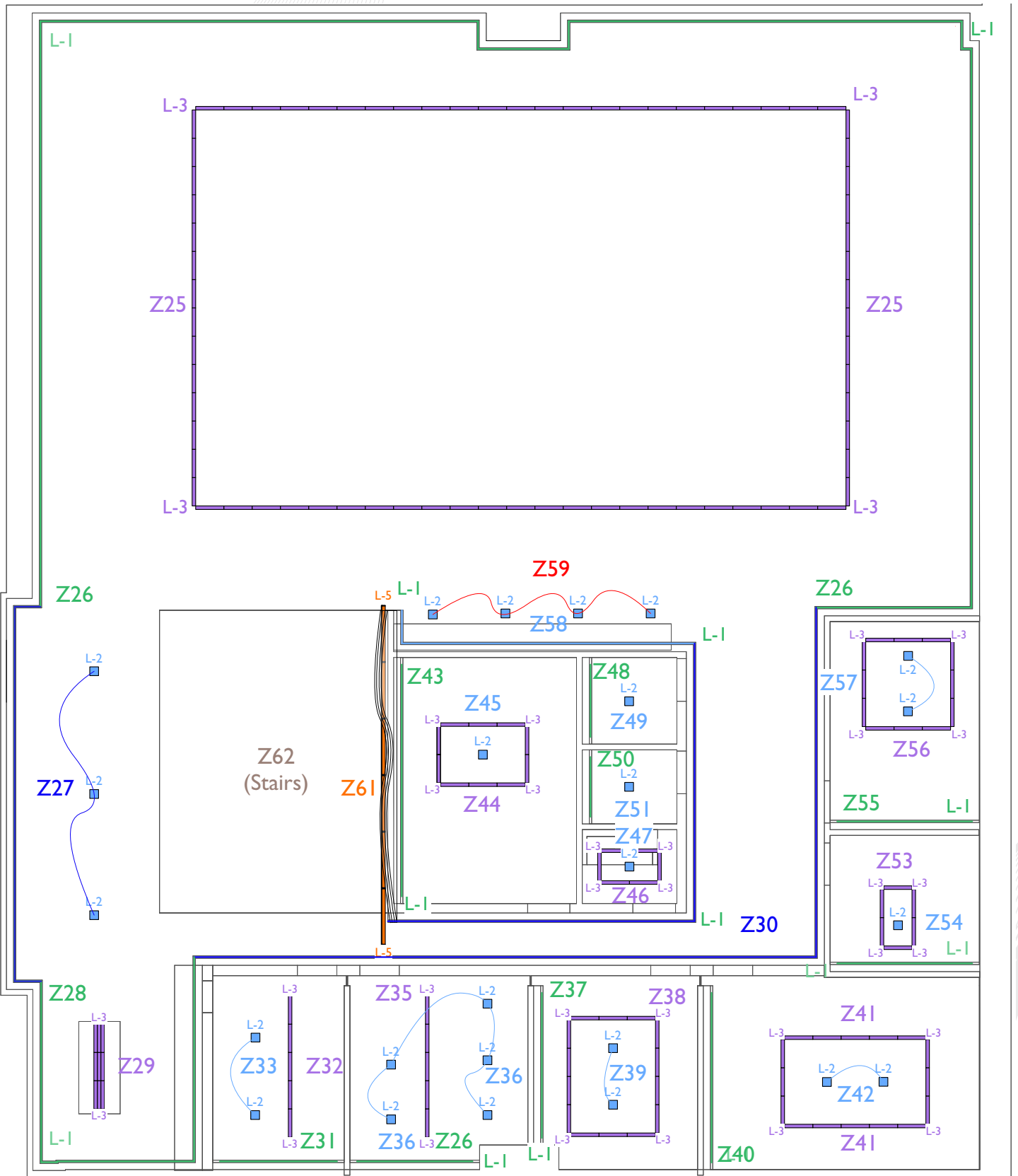


Reflected Ceiling Plan





7th Floor Control Plan



6th Floor Control Plan

Control Schedule

Zone	Type	Scene	Z58 - Copy/Print Wall Wash	Switched (On/Off)	Level (%)	No. Lums.
Workshop Juniper	Z1		Z25 - Workstation Juniper	On	100	74
Workshop Wall Wash Presentation	Z2		Z26 - Workstation Wall Wash	On	100	165
Workshop Wall Wash	Z3	Assembly 1	Z58 - Copy/Print Wall Wash	On	100	23
Workshop Downlight	Z4		Z59 - Copy/Print Downlight	On	100	3
7th Floor Elevator Lobby	Z5		Z60 - Copy/Print LED Stripe	On	100	21
Reception Wall Wash	Z6					
Decorative Pendant above Front Desk	Z7		Z26 - Workstation Wall Wash	On	100	74
Decorative Pendant above Lounge	Z8	Study	Z58 - Copy/Print Wall Wash	On	100	23
Feature Wall Top	Z9		Z59 - Copy/Print Downlight	On	100	3
7th Floor Office 1 Wall Wash	Z10		Z60 - Copy/Print LED Stripe	On	100	21
7th Floor Office 1 Juniper	Z11					
7th Floor Office 2 Wall Wash	Z12		Z25 - Workstation Juniper	On	50	74
7th Floor Office 2 Juniper	Z13		Z26 - Workstation Wall Wash	On	50	165
Computer Lab Wall Wash	Z14	Relaxed	Z58 - Copy/Print Wall Wash	On	50	23
Computer Lab Juniper	Z15		Z59 - Copy/Print Downlight	Off	N/A	3
Computer Lab Downlight	Z16		Z60 - Copy/Print LED Stripe	On	50	21
7th Floor Corridor	Z17					
Client Meeting Room Wall Wash	Z18	Presentation	Z1 - Workshop Juniper	On	100	74
Client Meeting Room Juniper	Z19		Z3 - Workshop Wall Wash	On	100	148
Client Meeting Room Downlight	Z20					
Light Lab Juniper	Z21		Z2 - Workshop Wall Wash Presentation	On	100	42
Light Lab Downlight 1	Z22	Welcome	Z3 - Workshop Wall Wash	On	100	148
Light Lab Downlight 2	Z23		Z4 - Workshop Downlight	On	100	15
Light Lab Downlight 3	Z24					
Workstation Juniper	Z25		Z1 - Workshop Juniper	On	100	74
Workstation Wall Wash	Z26	Assembly 2	Z2 - Workshop Wall Wash Presentation	On	100	42
6th Floor Elevator Lobby	Z27		Z3 - Workshop Wall Wash	On	100	148
Pantry Wall Wash	Z28		Z4 - Workshop Downlight	On	100	15
Pantry Juniper	Z29					
6th Floor Corridor	Z30					
Two-Person Office Wall Wash	Z31					
Two-Person Office Juniper	Z32					
Two-Person Office Downlight	Z33					
Five-Person Office Wall Wash	Z34					
Five-Person Office Juniper	Z35					
Five-Person Office Downlight	Z36					
Four-Person Meeting Room Wall Wash	Z37					
Four-Person Meeting Room Juniper	Z38					
Four-Person Meeting Room Downlight	Z39					
Seven-Person Meeting Room Wall Wash	Z40					
Seven-Person Meeting Room Juniper	Z41					
Seven-Person Meeting Room Downlight	Z42					
Executive Office Wall Wash	Z43					
Executive Office Juniper	Z44					
Executive Office Downlight	Z45					
Mother's Room Juniper	Z46					
Mother's Room Downlight	Z47					
Small Phone Room Wall Wash	Z48					
Small Phone Room Downlight	Z49					
Large Phone Room Wall Wash	Z50					
Large Phone Room Downlight	Z51					
6th Floor Office Wall Wash	Z52					
6th Floor Office Juniper	Z53					
6th Floor Office Downlight	Z54					
Five-Person Meeting Room Wall Wash	Z55					
Five-Person Meeting Room Juniper	Z56					
Five-Person Meeting Room Downlight	Z57					
Copy/Print Wall Wash	Z58					
Copy/Print Downlight	Z59					
Copy/Print LED Stripe	Z60					
Feature Wall Bottom	Z61					
Railing LED Stripe	Z62					

Lighting Concept Statement

“Seamless Luminescence” encompasses a lighting strategy focused on a unified, pleasant, and efficient work atmosphere via well-integrated and cohesive lighting solutions:

Even Lighting

Utilizing fixtures and systems that evenly distribute light across the office, reducing glare, shadows, and stark contrasts to create a comfortable visual environment for employees.

Integrated Design

Incorporating lighting seamlessly into the office’s architecture and design, whether through recessed, indirect, or integrated fixtures in ceilings, walls, or furniture, providing functional illumination while blending with the space.

Aesthetic Enhancement

Ensuring that the lighting design positively contributes to the office’s overall aesthetic. This involves using lighting as a design element to accentuate architectural features, add visual intrigue, or elevate the atmosphere.

Master Control

Extending far beyond basic illumination, the lighting control system is built carefully engineered spaces. The principles of minimization of energy use, maximization of safety, enhancement of comfort, and amplification of production are embodied in this innovation. This technology represents Stack and Joules’ dedication to innovative solutions that raise the bar, promote sustainability, and improve user experiences, all in line with their goal. In the Control Plan, despite some of the different types of luminaires are channeled together, individual controls will be implemented on site for balance and harmony.



Open Workspace View 1



Open Workspace View 2



Five-Person Meeting Room



Workshop



Reception



Feature Wall + Staircase

First Floor - Open Workspace View I



Relaxed



Assembly I



Study

First Floor - Open Workspace View 2



Relaxed



Assembly I



Study

First Floor - Seven-Person Meeting Room



Relaxed



Assembly I



Study

Second Floor - Workshop View I



Assembly 2



Presentation



Welcome

Second Floor - Workshop View 2



Assembly 2



Presentation



Welcome

Second Floor - Workshop View 3



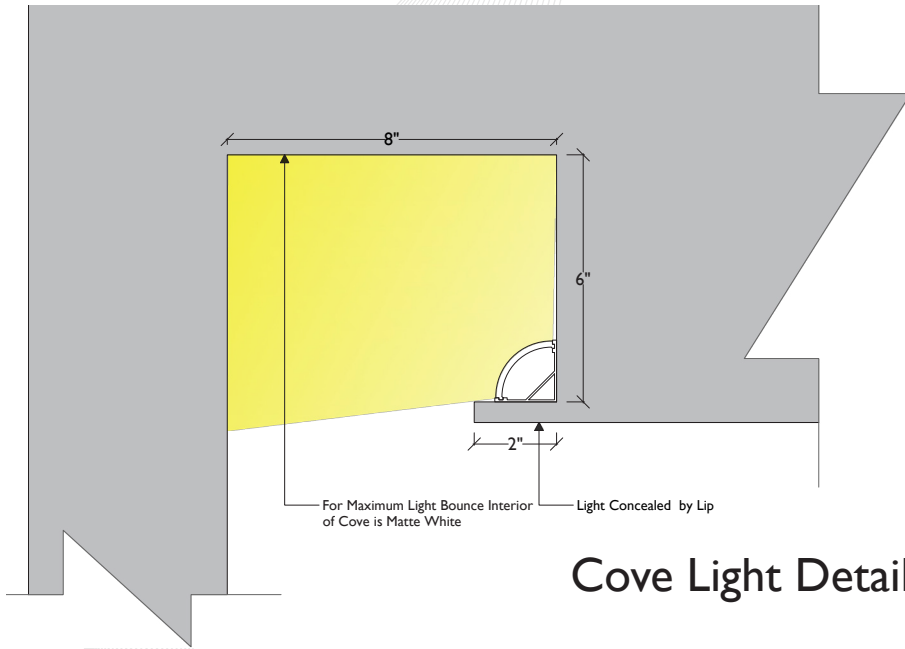
Assembly 2



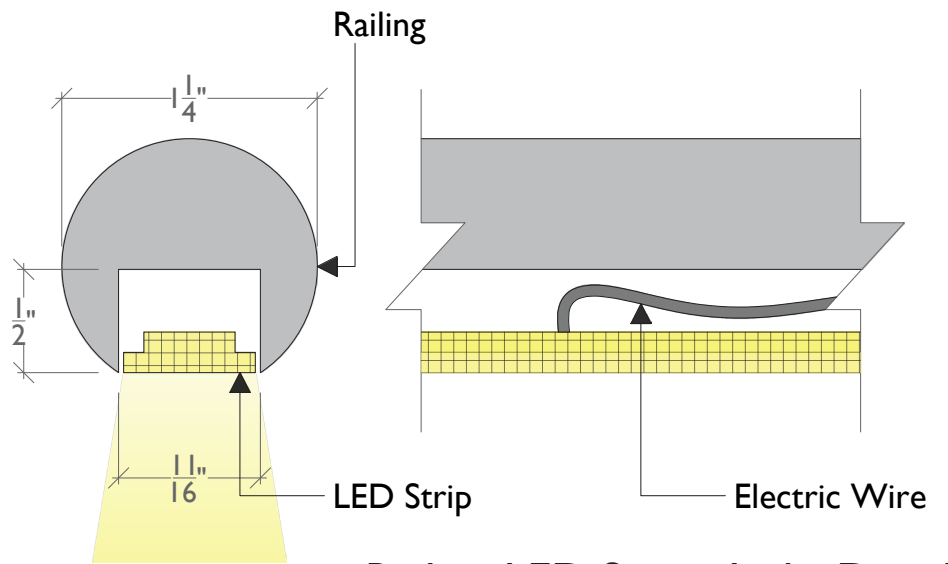
Presentation



Welcome



Cove Light Detail



Railing LED Stripe Light Detail

