

reyne lawson

MELBOURNE DESIGN WEEK

30TH MAY - 2ND JUNE

A-N STUDIO, 415 BRUNSWICK ST, FITZROY

HOLY ROLODEX



MELBOURNE
DESIGN WEEK

Based in Naarm (Melbourne) and born and raised in Boorloo (Perth), Reyne Lawson is a graphic designer and digital artist producing works that explore sexuality, intimacy, and culture. Using both tactile and digital mediums, Lawson combines elements of fashion, design, religion, and sexual fantasy. Often incorporating vintage pornography and other media to create surreal, provocative, and retrofuturistic compositions.





HOLY ROLODEX

*Holy (adjective): dedicated or consecrated to God or a religious purpose; sacred.
Rolodex (noun): a type of desktop card index.*

Holy Rolodex is a reinterpretation of Catholic theology, reimagining a collection of saints and holy figures from a queer perspective. When sexual judgment is eradicated from the religious narrative, it may allow people to recognise the appetites these saints embody. Removing the element of sexual shame that can be associated with Catholicism, this body of work offers a version of these beloved saints that resonates without fear of judgment.



JOAN & HER THRONE

510 x 800mm

(ST JOAN OF ARC) Patron of: France, martyrs, captives and soldiers

Defying societal expectations of women's roles in medieval Europe, her actions challenged the notion that women were inherently unfit for military leadership and demonstrated that women could excel in traditionally male-dominated spheres.



CECILIA & THE HARP

320 x 420mm

(ST CECILIA) Patron of: Music, musicians and poetry

Often depicted as playing instruments in art due to legendary stories of her singing to God during her wedding, hence being regarded as the patron saint of music.

HEART OF HEARTS

841 x 1189mm

(ST JOHN OF GOD) Patron of: Hospitals, nurses, firefighters, and those suffering from heart disease

Despite his early struggles with alcoholism, Saint John of God founded hospitals and dedicated his life to caring for the sick and needy.



INMATE FRANCIS

1100 x 776mm

(ST FRANCIS OF ASSISI) Patron of: Animals and the environment

Famously stripped off his clothes in a public square in Assisi, symbolizing his complete dedication to a life of poverty and humility. He would often pray to birds and various animals.





MISS LIMA 1617

800 x 565mm

(ST ROSE) Patron of: Beauty and gardening

Renowned for her beauty, St Rose of Lima was also a talented gardener and grew medicinal herbs, which she used to help care for the sick and poor in her community.



GEORGE & THE DRAGON

296 x 420mm

(ST GEORGE) Patron of: Soldiers, knights, cavalry, scouts and farmers.

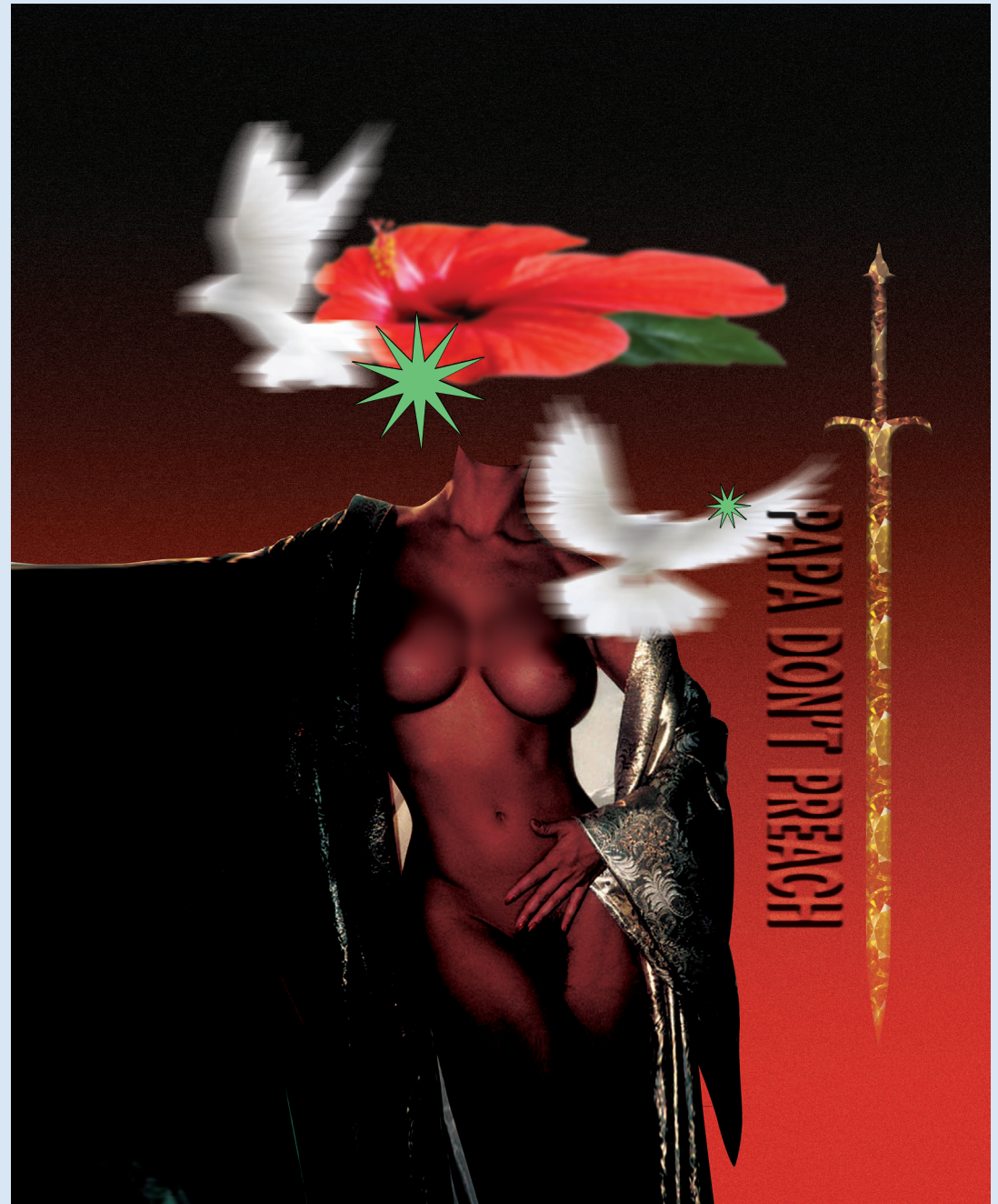
Rumour has it that he slayed a dragon during a battle, although some believe it was a rogue wolf. Nonetheless, this battle symbolizes for many the triumph of good over evil.

THE BEHEADING OF BARBARA

488 x 600mm

(ST BARBARA) Patron of: Artillerymen, miners, and those who work with explosives

Executed by her father as a result of her converting from Paganism to Christianity, Dioscurus was struck by lightning and died just moments after severing his own daughter's head.





THE MARTYRDOM OF SEBASTIAN

862 x 1100mm

(ST SEBASTIAN) Patron of: Soldiers, archers, athletes, and those who desire a saintly death

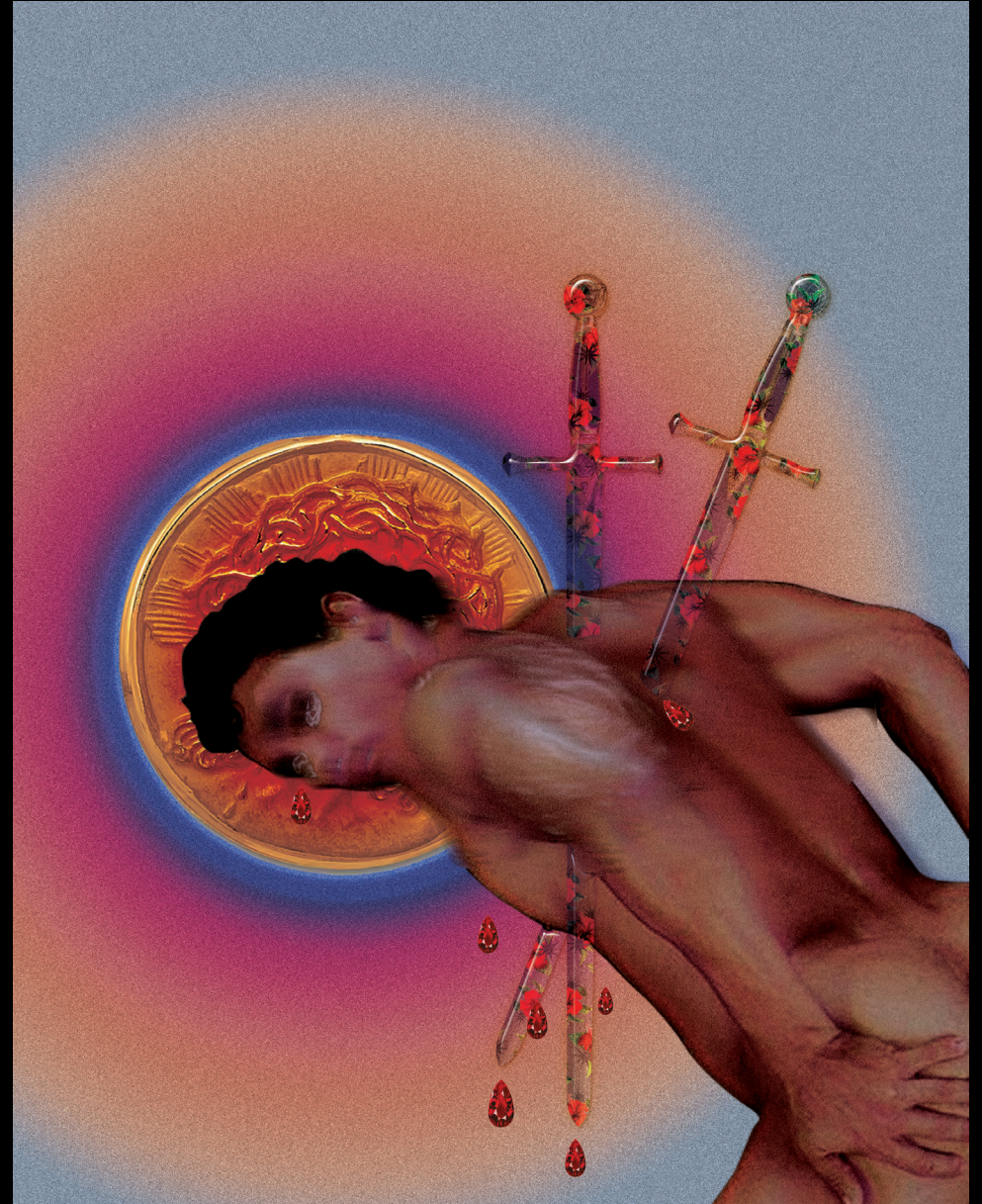
According to legend, after surviving being shot with arrows, he confronted the emperor to denounce his cruelty, ultimately leading to his execution.

THE LOST CAUSE

477 x 600mm

(ST JUDE THE APOSTLE) Patron of: Desperate cases and lost causes

Jude visited a ruler afflicted with an incurable disease, healing him instantly by laying hands on him.





HEAVENLY THROW

1250 x 1500mm



ST SEBASTIAN CANDLE
ST ROSE OF LIMA CANDLE
ST FRANCIS OF ASSISI CANDLE

210 x 100mm







oibutz.n-p
oibutz.n-p
oibutz.n-p

oibutz.n-p



reyne lawson

reynelawson.com

studio@reynelawson.com

@reynelawson_

0425 000 667

