

OUT OF OFFICE

We are a space, designed by Andpeople to openly explore ideas, experiments and creative pursuits. A collaborative place to come together, connect, learn, exchange and evolve.

Venue Hire Pack

Ground Floor 39 Wellington Street
Chippendale NSW 2008

hello@out—ofoffice.com







General Info

001

The Space

Our space is approximately 97 sqm in size with high ceilings and double fold open doors that are great for visibility from street view.

Ceiling to floor curtains which hang in the back of the space and can be fully closed, left halfway or open to divide.

Capacity.....100 PAX
Size.....97 SQM

Included

2 high tables, 8 high chairs
Meeting table, 4 chairs
Steel display pallets
Bar fridge
A5 card display
3 piece modular couch

Amenities

Bathroom
Kitchenette
(No live cooking on site, only cold or prepared food allowed)
Air Conditioning
Wi-Fi

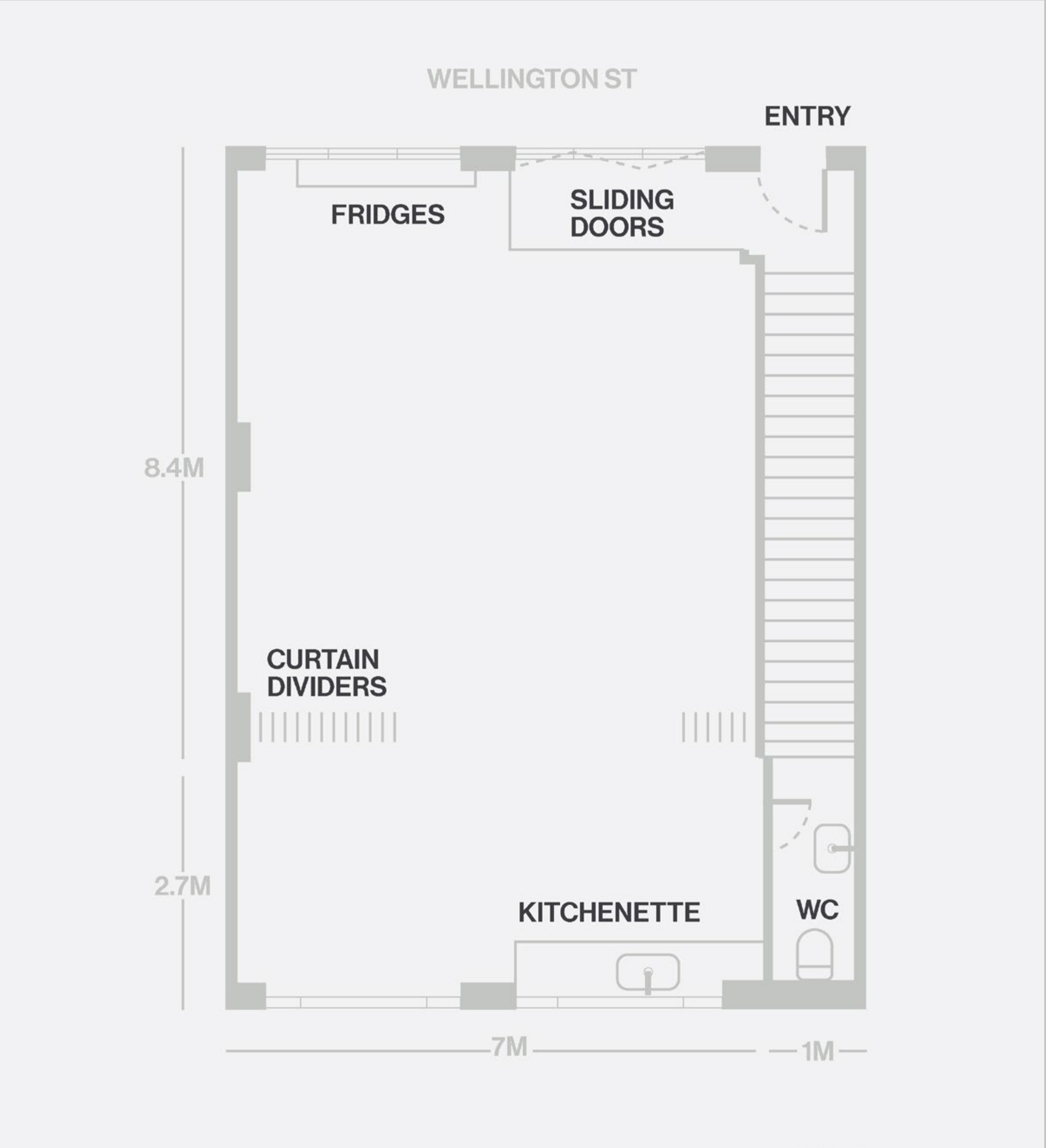
Additional

Racks & hangers.....\$20 P/D
Steamer.....\$15 P/D
Wheelable TV Screen.....\$20 P/D
Whiteboard.....\$50 P/D
2 Display Aluminium Pallets.....\$85 P/D
2x Electro-Voice Evolve 50 Sub Speakers.....\$350 P/D

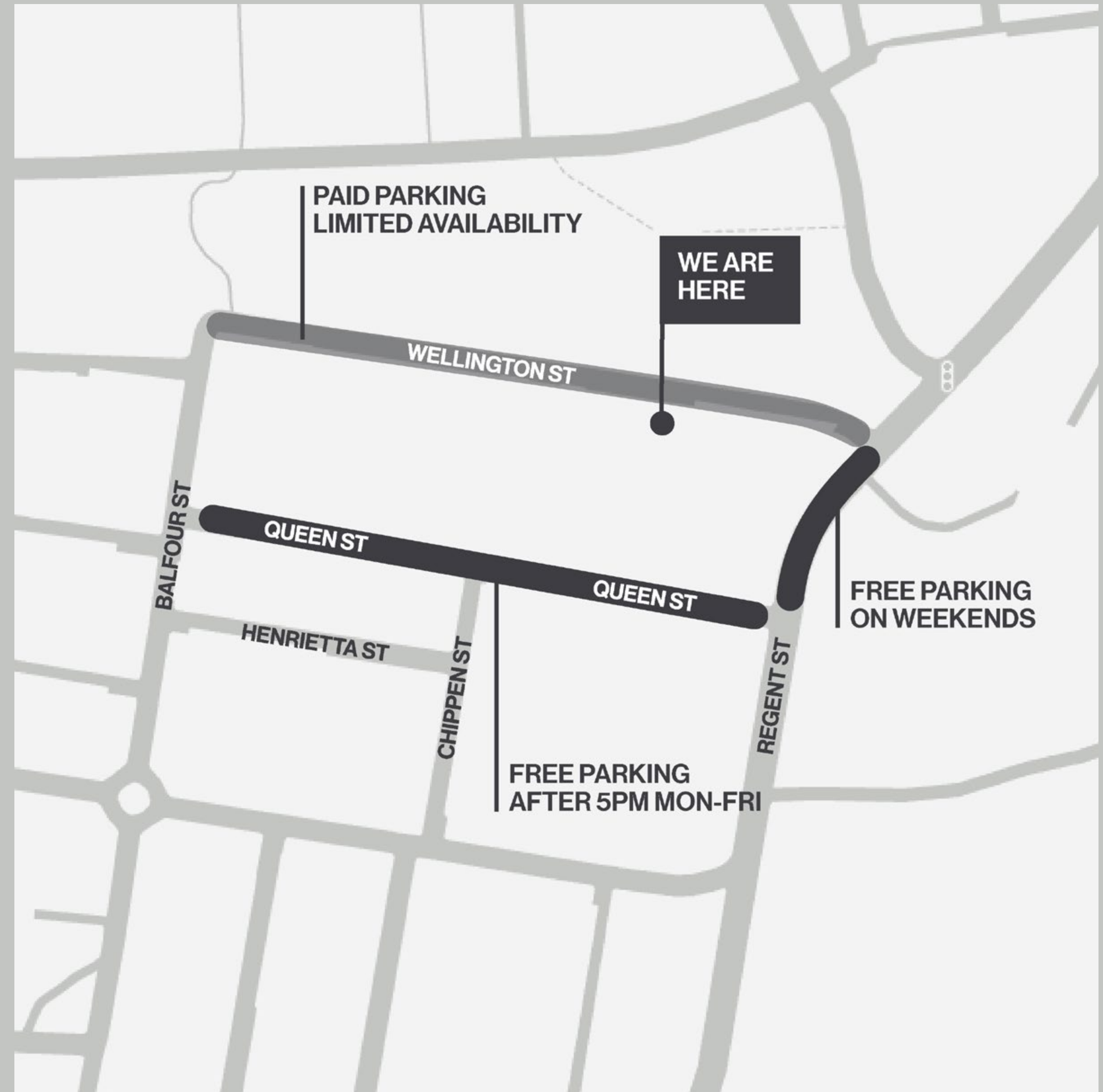
\$100 fee for removal of large furniture out of the space

Floorplan

002



Parking Guide



003

We have an allocated loading zone at the front of the venue.
Public parking is available on Wellington Street (limited availability) and Regent Street.

Rates

Cost

\$500
per half day

\$800
per whole day

All prices inclusive of bump in/bump out

Extra

Cleaning & Waste Disposal Fee\$110
Security.....\$55 P/H
(Required if guests exceed 75) (4HR min)

All prices exclude GST



OUT OF OFFICE

a space to openly explore ideas and projects

Ground Floor 39 Wellington Street
Chippendale NSW 2008

hello@out—ofoffice.com