

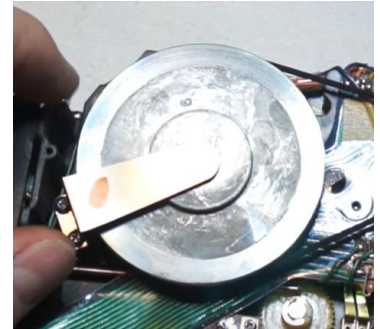
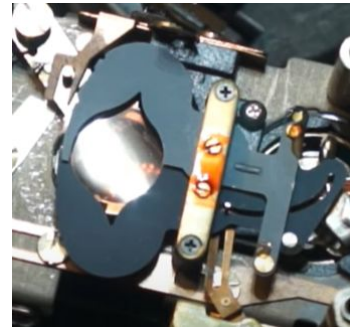
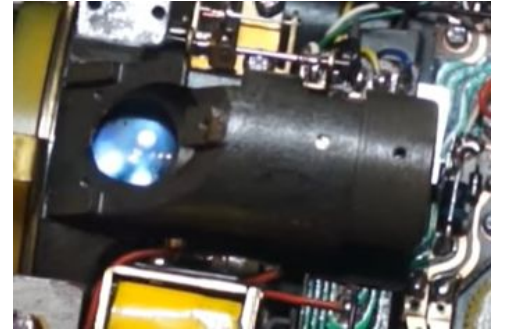
Digital Drawing

2022-2학기 기말 발표

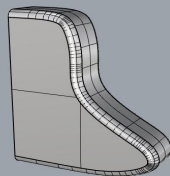
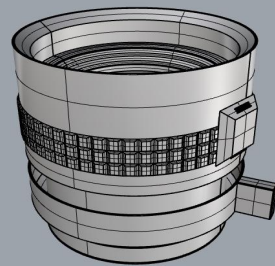
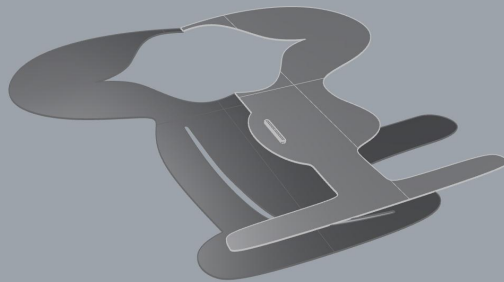
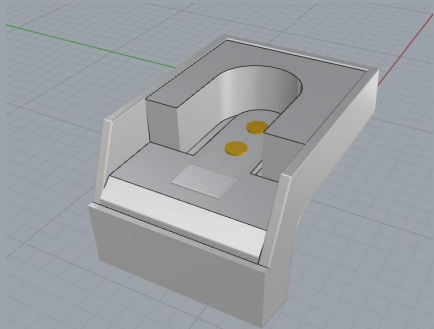
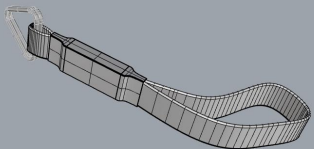
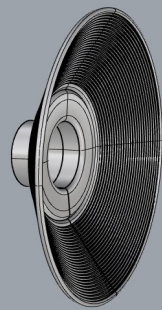
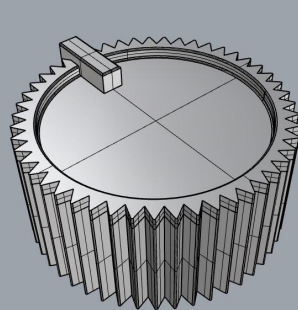
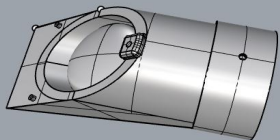
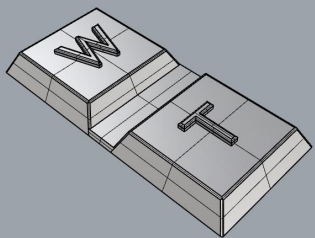
2169078 비엔 Vivienne Tran



사물 - super 8 camera



사물 - super 9 camera



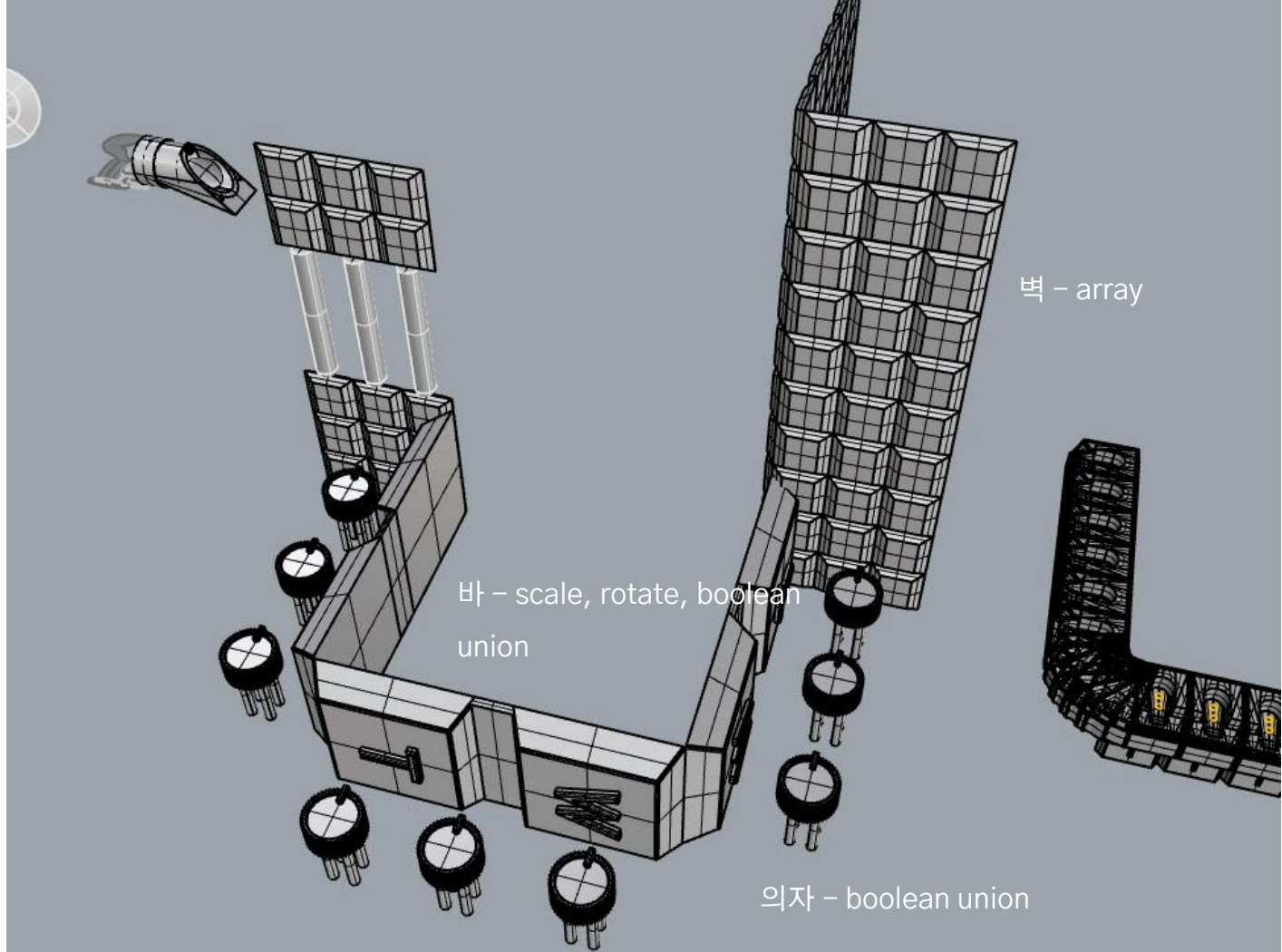
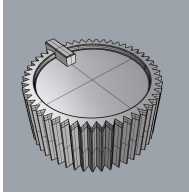
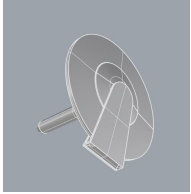
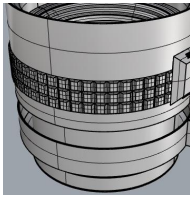
10개의 요소들

sketch idea & concept



‘심야식당’

- 사람마다 사연이 있음
- 아늑한 분위기에서 손님들의 사연을 풀어주는 것 (보는 사람)
- 밥 먹으러 들어오는 손님들은 사장님이 해주는 밥으로 위로 받음
- 밥/음식은 사람과 사람을 연결한다
- 서로 아무 말 안 해도 (밥해주는 것과) 밥먹는 것만으로도 위로가 됨

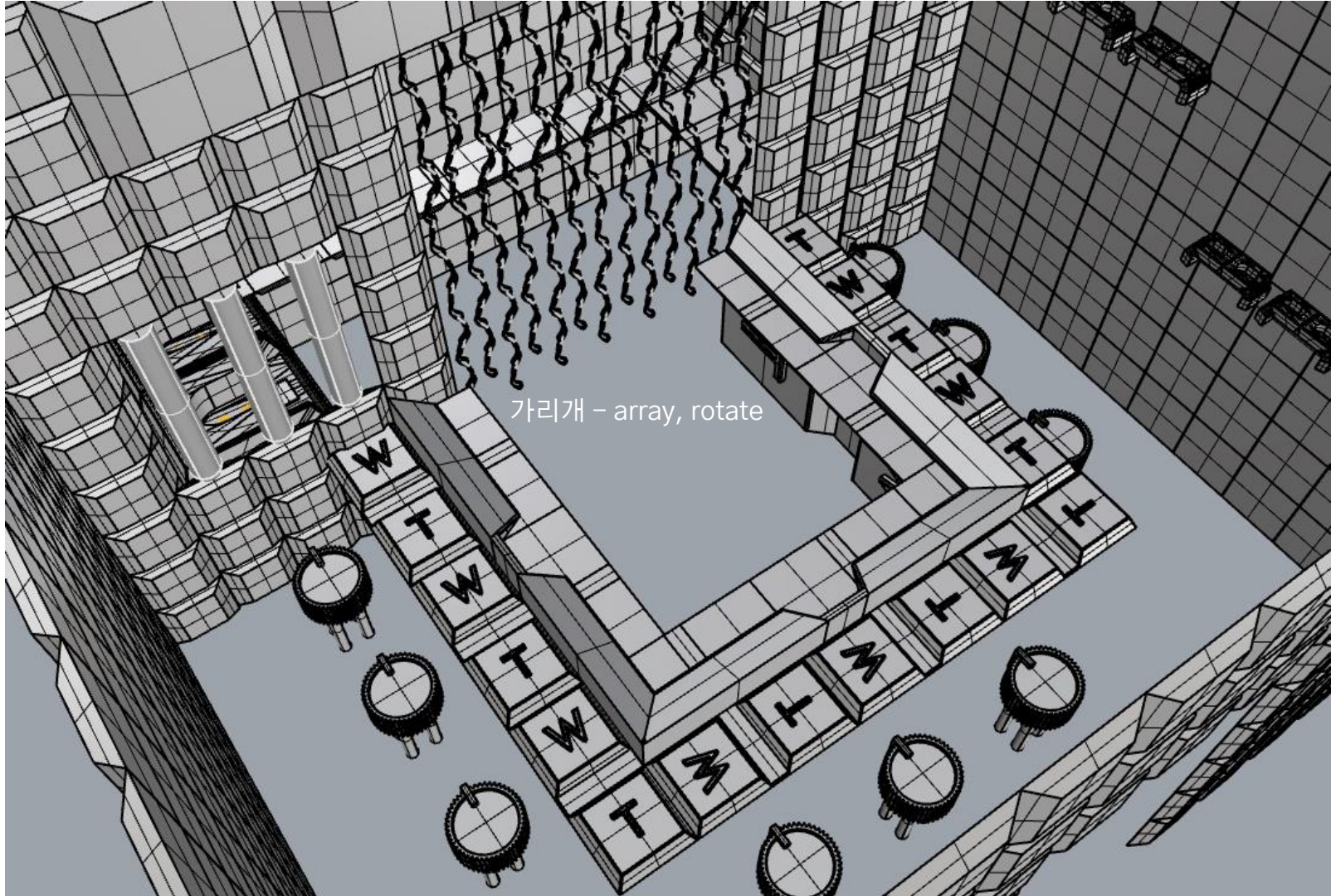
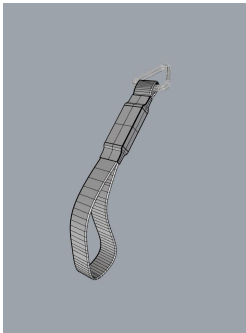


벽 - array

바 - scale, rotate, boolean union

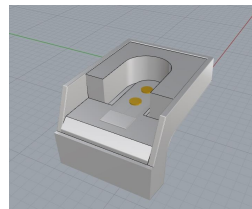
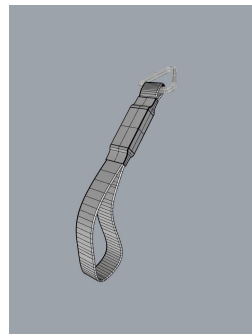
의자 - boolean union

progress 1



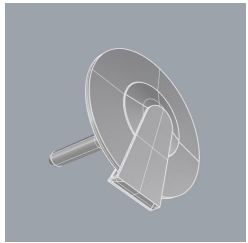
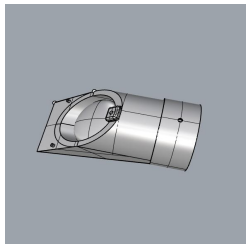
가리개 - array, rotate

progress 2

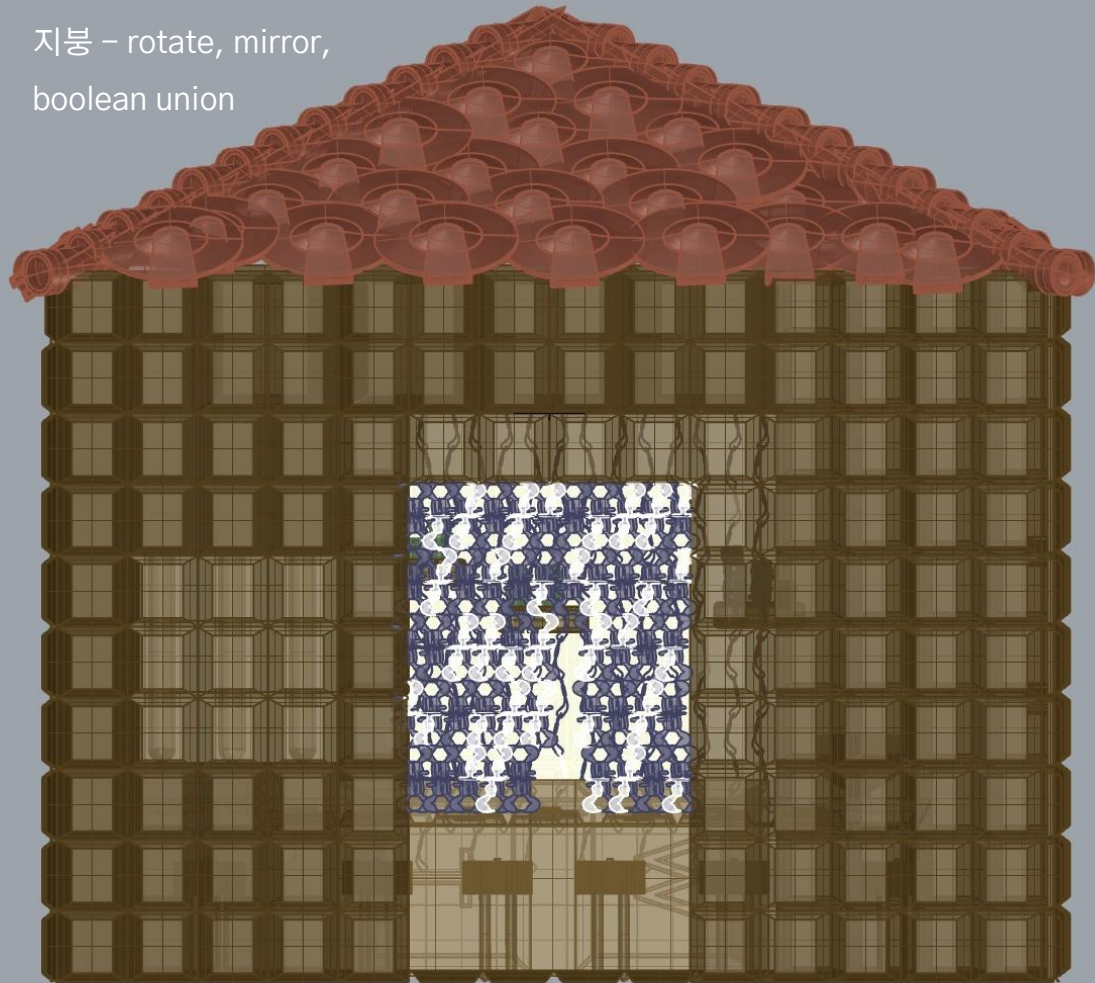


주방 - scale, boolean
union

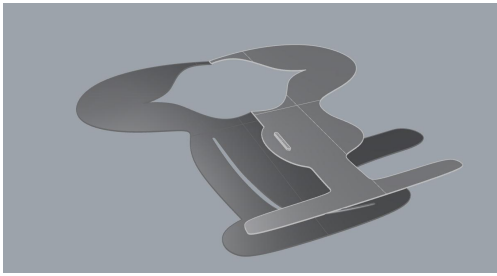
progress 2



지붕 - rotate, mirror,
boolean union

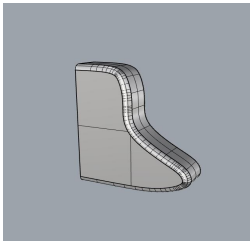
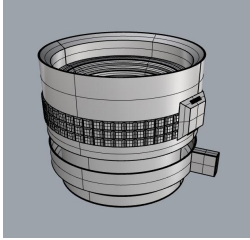
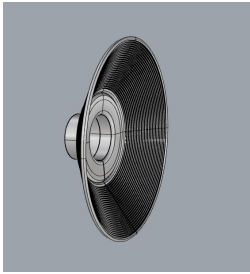


progress 3



가리개 – mirror, array on surface

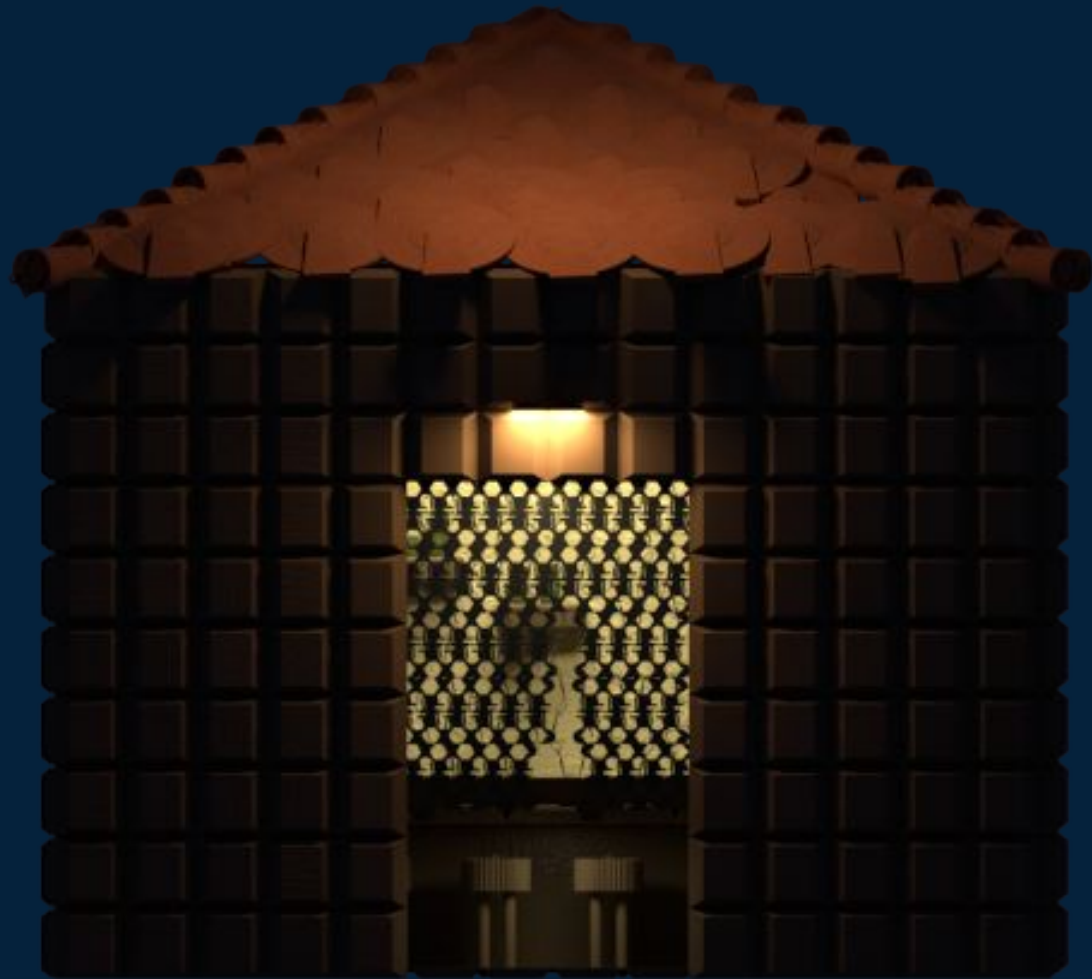
progress 3



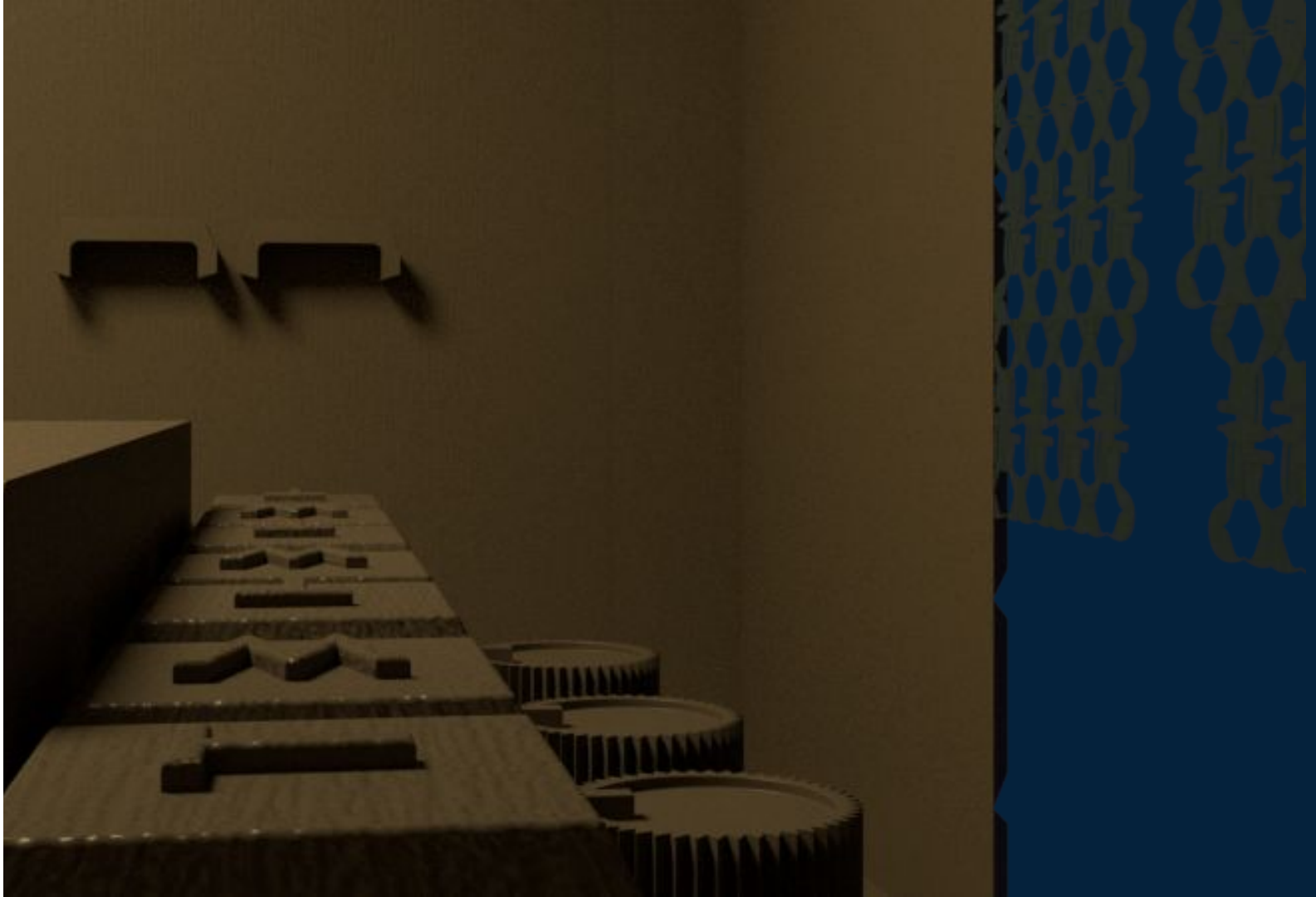
progress 3



rendering



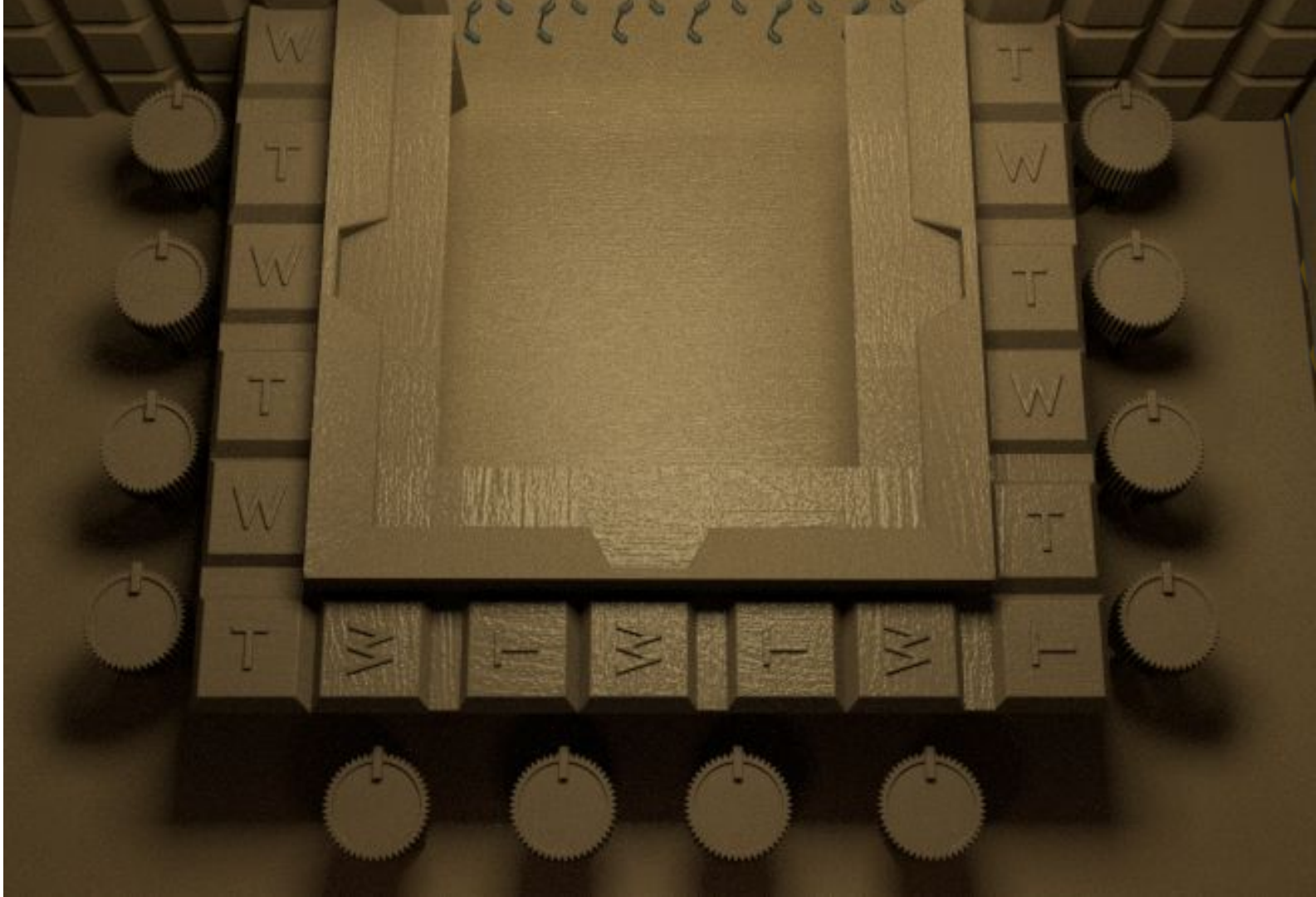
rendering



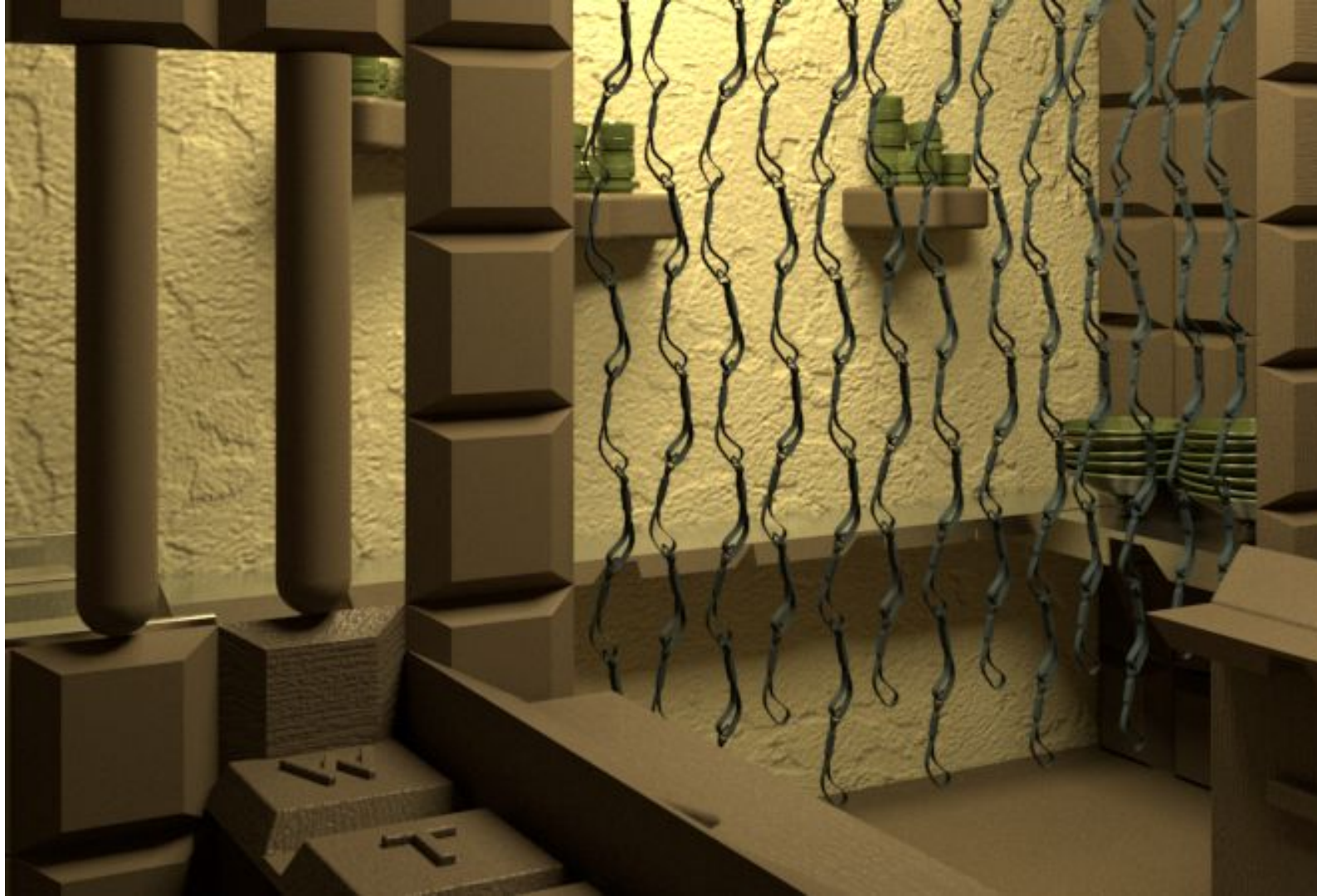


rendering

rendering



rendering





rendering

human scale



human scale



감사합니다.