

DASH CAM
DASH CAM
DASH CAM
DASH CAM
DASH CAM
DASH CAM
DASH CAM
DASH CAM
DASH CAM
DASH CAM

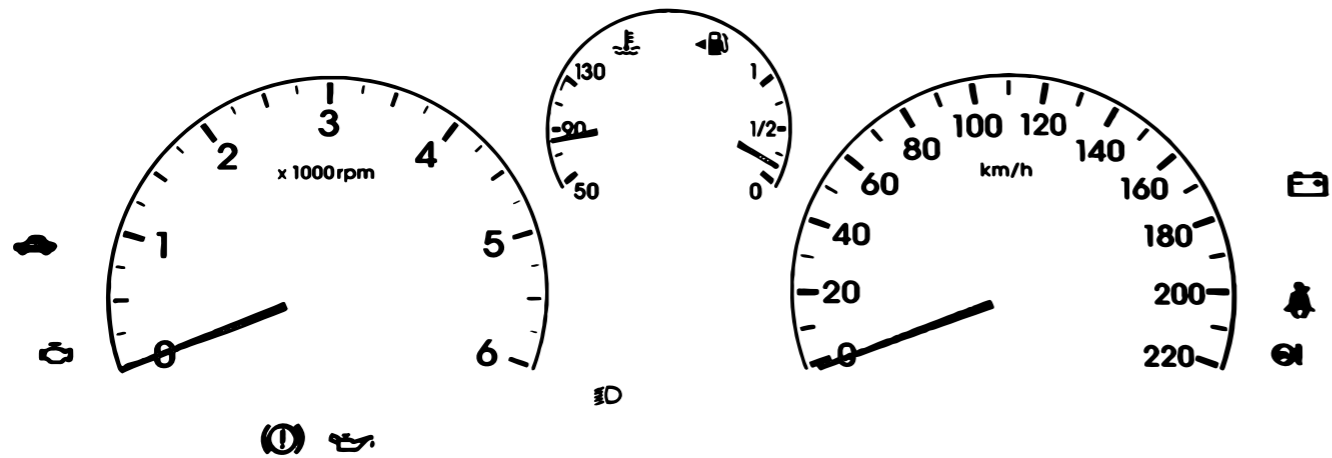
AMIT RE'EM

D A S H C A M

A COLLECTION OF PHOTOGRAPHS
TAKEN BETWEEN OCTOBER 8TH
AND OCTOBER 19TH, WHILE DRIVING
AROUND THE COUNTRY VOLUNTEERING.

THIS IS THE FIRST TIME I'VE
FELT THE URGE TO DOCUMENT
MY SURROUNDINGS AS A COPING
MECHANISM IN AN UNNATURAL SITUATION.

365 DAYS HAVE PASSED, AND
EVERYTHING IS STILL THE SAME.



B R I N G
T H E M
H O M E N O W !











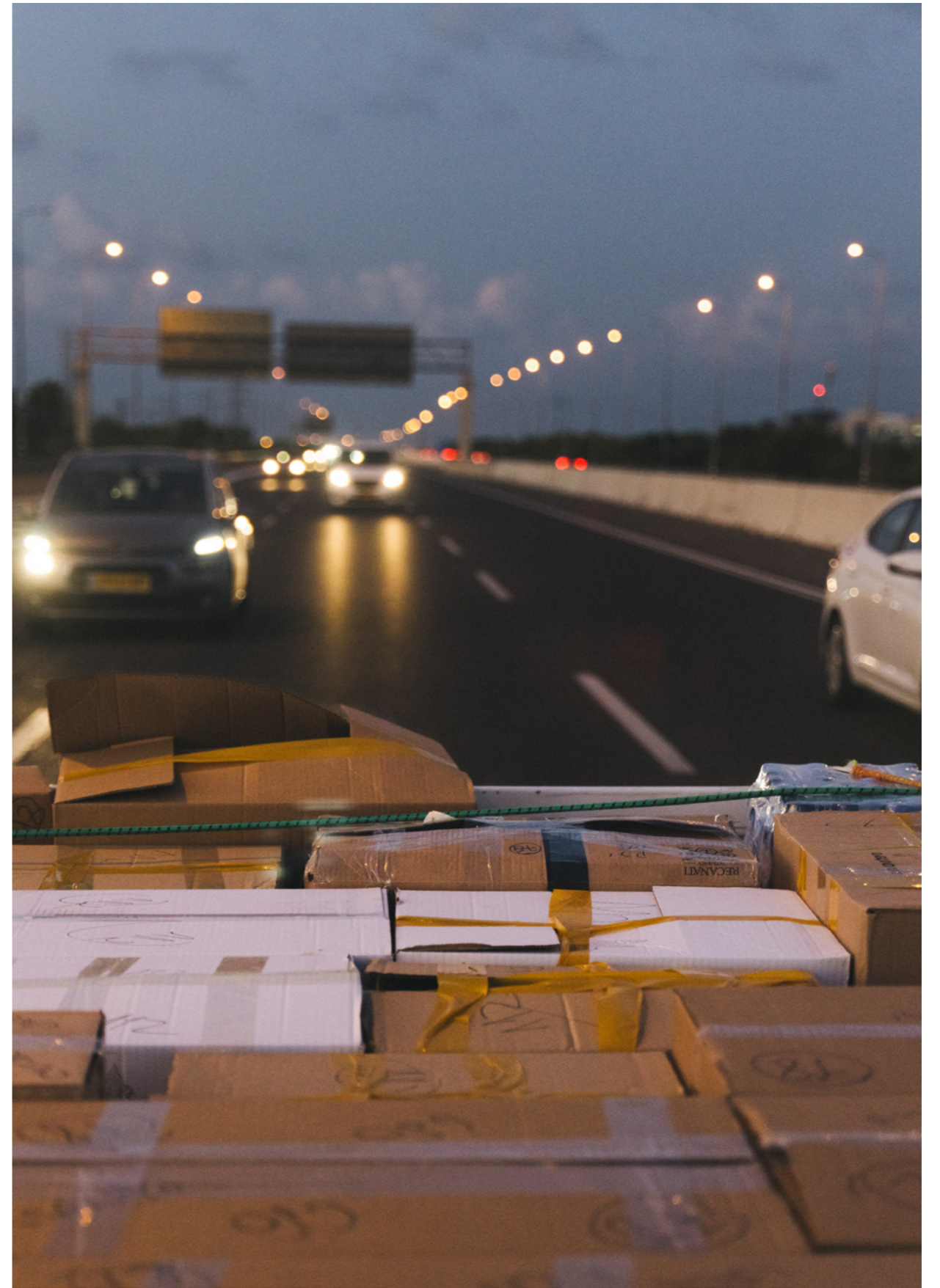


















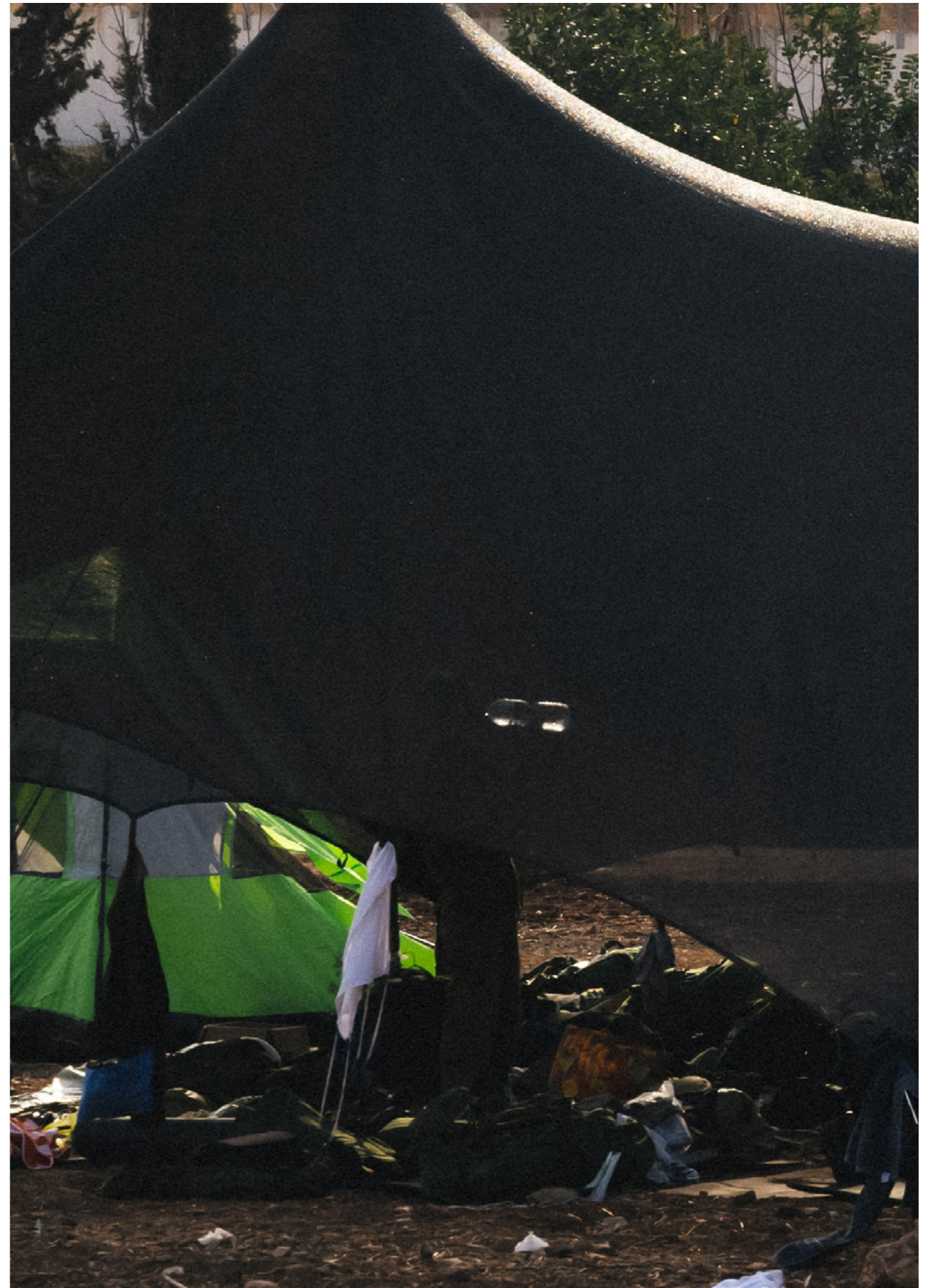








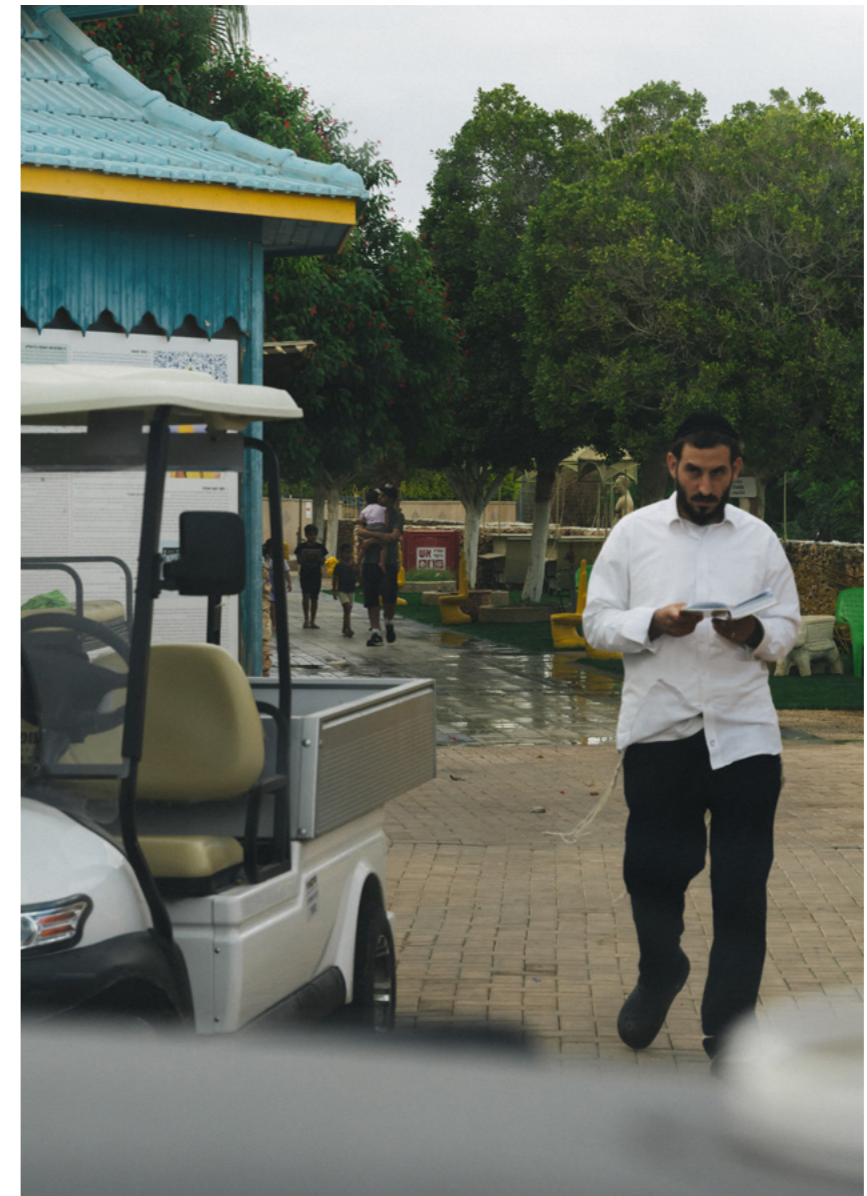




























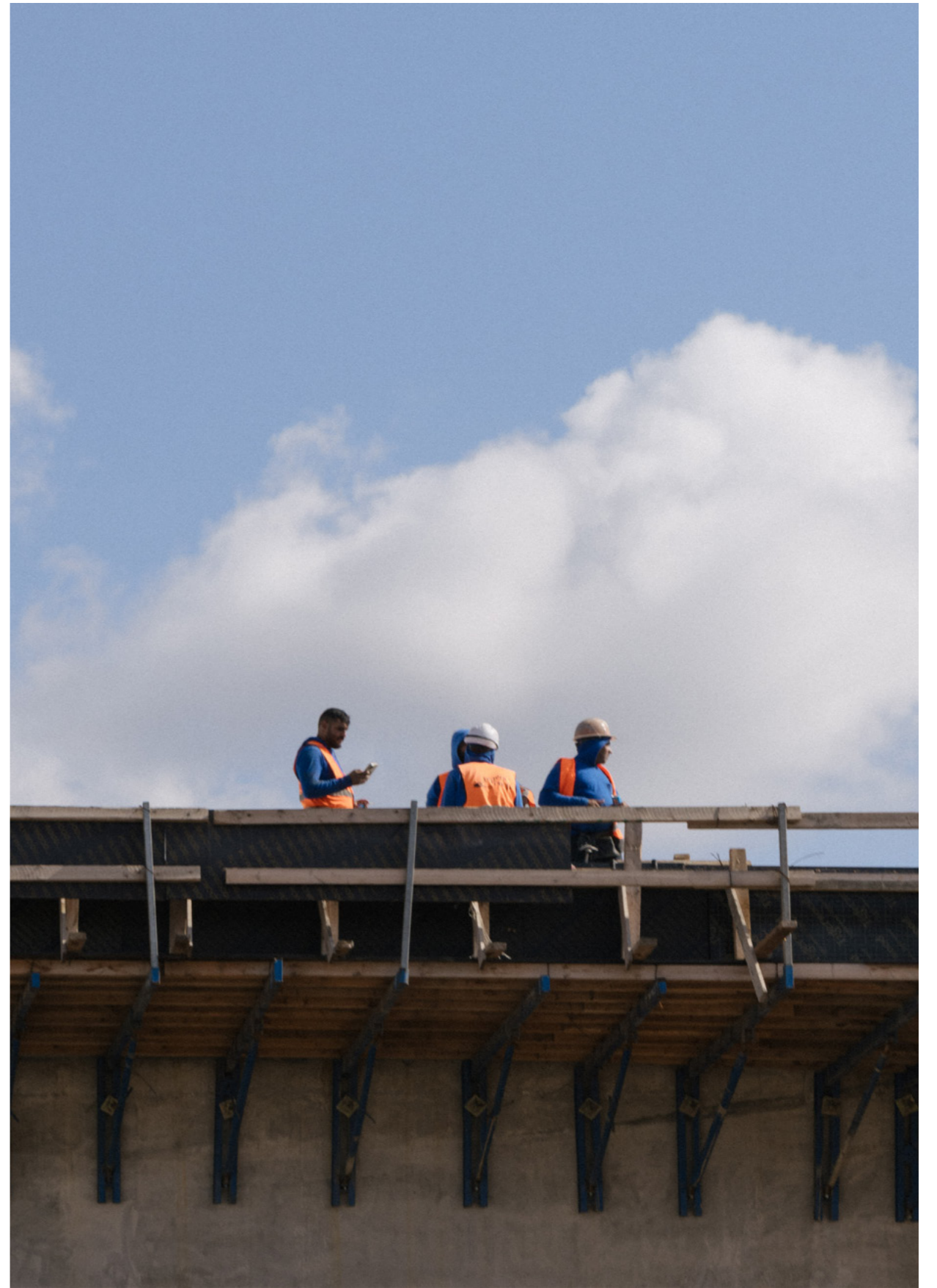














ALL PHOTOS ARE DISPLAYED
IN CHRONOLOGICAL ORDER
AND WERE TAKEN
BY AMIT RE'EM
WHILE DRIVING BETWEEN
MOUNT HERMON TO EILAT, COVERING
5,000 KM, 15,000 MEALS, AND
1 TON OF PRODUCE DELIVERED.



I WANT TO THANK
ITAY ALTARATZ,
WITH WHOM
I COMPLETED THIS
ENTIRE JOURNEY.