

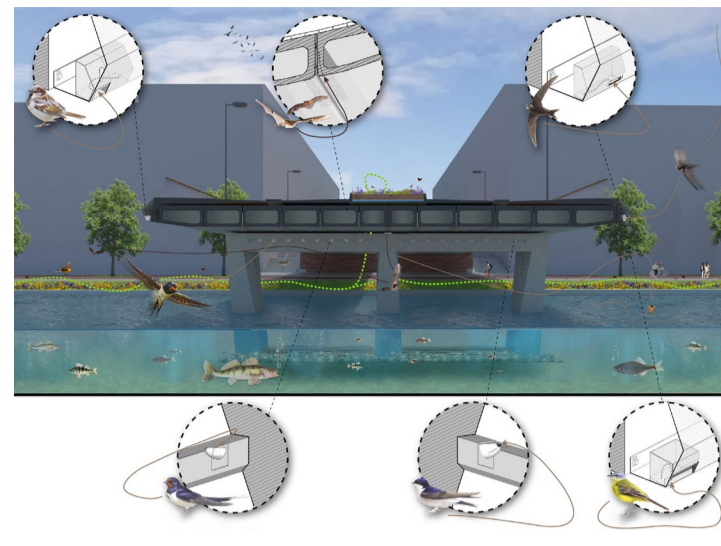
# OBSERVATIONS



Grass-pavement parking lot.



Green rooftop and green island, Rotterdam Noord, 2023/24.



Concept of Amstelroom Bridge in Amsterdam, VenhoevenCS 2022.



Germany-Austria highway, 2023.



Crane in Rotterdam Noord, 2024.



Excavator on the construction site 2024.



Gannets nesting, trapped bird. Les Etacs, Alderney, State of Jersey 2019.



Anti-bird spikes on a tree in Bristol, UK, Tom Wren.



Paved street with tar repair in Rotterdam, 2024.



Common coots in plastic/wooden nest, Rotterdam.



Ivy growing on building, Rotterdam 2024.



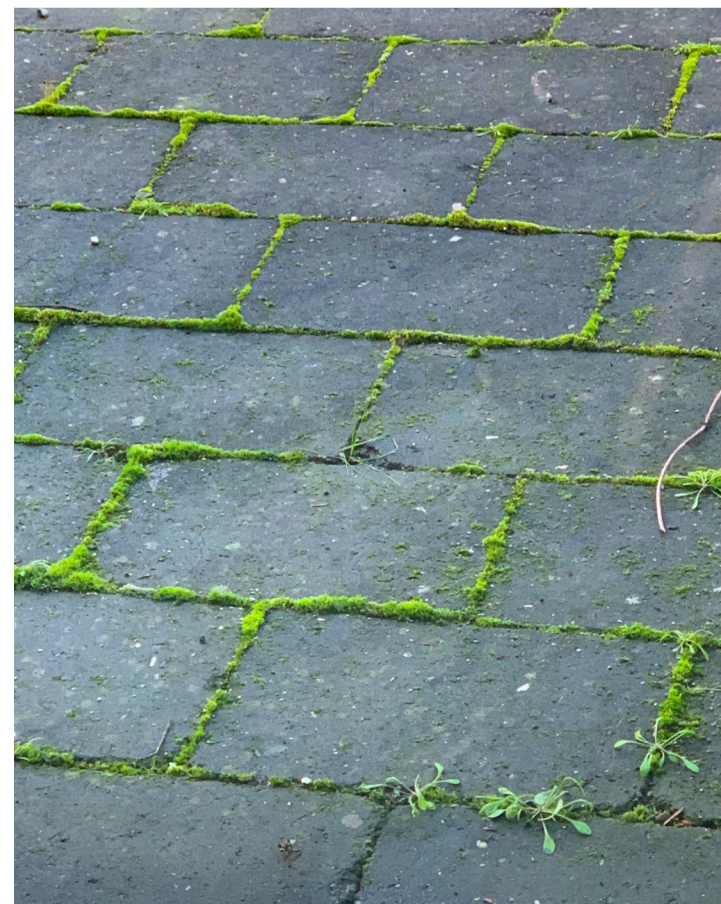
Birds nesting on lamp, Germany 2023



Tree breaking concrete, Rotterdam Noord, 2024.



Common coots in plastic/wooden nest, Rotterdam.



Moss growing around tiles, Rotterdam 2024.

# FINDINGS

## SUPPORTIVE POTENTIAL OF HUMAN TECHNOLOGY/INFLUENCE

Human technology and influence have the potential to support the more-than-human world. For example, intentionally created structures with hybrid functions, such as architecture that provide value for both animals and humans. In the setup, this aspect is embodied by the full-spectrum light that supports plant growth.

## HUMAN TECHNOLOGY/INFLUENCE

Humans use technology as a tool to interact with their surroundings and transform them according to their desires and needs. It executes human intention. This intention to transform is represented by the human hand/touch in the setup, as the hand is the tool of the human body for crafting.

## DESTRUCTIVE POTENTIAL OF HUMAN TECHNOLOGY/INFLUENCE

Human technology has the power to disrupt and destroy processes within its sphere of influence, both accidentally and intentionally. This is demonstrated by the decaying plant in the setup.

## MORE-THAN-HUMAN ENTITIES

No matter if it's a tree, a bird, or a houseplant, all of them are more-than-human entities that increasingly interact and merge with human technology. In this setup, the more-than-human realm is embodied by the plant, which, like many non-human entities in the real world, is put in a position where it interacts with human technology.

## PLANT TECHNOLOGY HYBRID

Whether it is a plant growing in a rectangular pattern among tiles or a nest with plastic in it, both can be understood as plant-technology hybrids. The installation, with its materiality, merges plants with human technology, resulting in a similar hybrid format.

# MANIFESTATION

