



Catalogue

January 2026

PHILLIPA ATKINSON

Photosensitive acrylic on *Duchess Satin*

**Prices excluding tax, duties & transport*



Rose-pleated (01)
140x250x4,5cm
€6500*



Rose-pleated (02)
140x250x4,5cm
€6500*



Foxglove (01)
80x180x4,5
€3900*



Foxglove (02)
80x180x4,5
€3900*



Web casts no shadow
120x150x4,5cm
€4100*



Three-lily
80x80x4,5cm
€2300* - Reserved until 15/01



Petalled
40x40x4,5cm
€900*



Old thorns from new stems
100x80x4,5cm
€2600* - Reserved until 15/01

Photosensitive acrylic on *Duchess Satin*

**Prices excluding tax, duties & transport*



This crowning bitterness
230x130x4,5cm
€6400*



No certain proof
40x55x4,5cm
€1200*



So shaken, as we are
40x55x4,5cm
€1200*



Untrained vine
40x55x4,5cm
€1200*



Regarded, utterly in vain
140x180x4,5cm
€4900* - reserved until 15/01



Yesterlight
55x70x4,5cm
€1800*



A coin not spent
55x55x4,5cm
€1400*



Kinsman of indifference
300x100x4,5cm
€6600* - Reserved until 15/01



Day to Night (2025)
Dir. Charlotte Mungomery

*The stars rise, the moon bends her arc,
Each glowworm winks her spark,
Let us get home before the night grows dark:
For clouds may gather
Though this is summer weather,
Put out the lights and drench us through;
Then if we lost our way what should we do?"*

Goblin Market, Christina Georgina Rossetti

Phillipa Atkinson paints *en plein air*: knees in the dirt, crouched over pristine stretched satin. She surrenders her labour to elements of rain and sun. At their whim, an image is created or lost.

This voluntary smallness speaks to Atkinson's yearning for shelter. By falling trustingly into both light and dark, she is rewarded with a home in the now. Fear is replaced by trust, and the barriers to imagination fall away. The shadows of girlhood are stitched to her heels as she learns to dance between earthly and imagined realms.

A practiced hand calls in botanical imagery, arranged into surreal, sheltering compositions of fans, heirlooms, and undergrowth. In relation to these sprawling backdrops, Atkinson shrinks to elfin proportions. The freedom afforded to her is that of an actor: these make-believe scenes are coloured with the fullest depth of her feeling.



Day to Night (2025)
Dir. Charlotte Mungomery

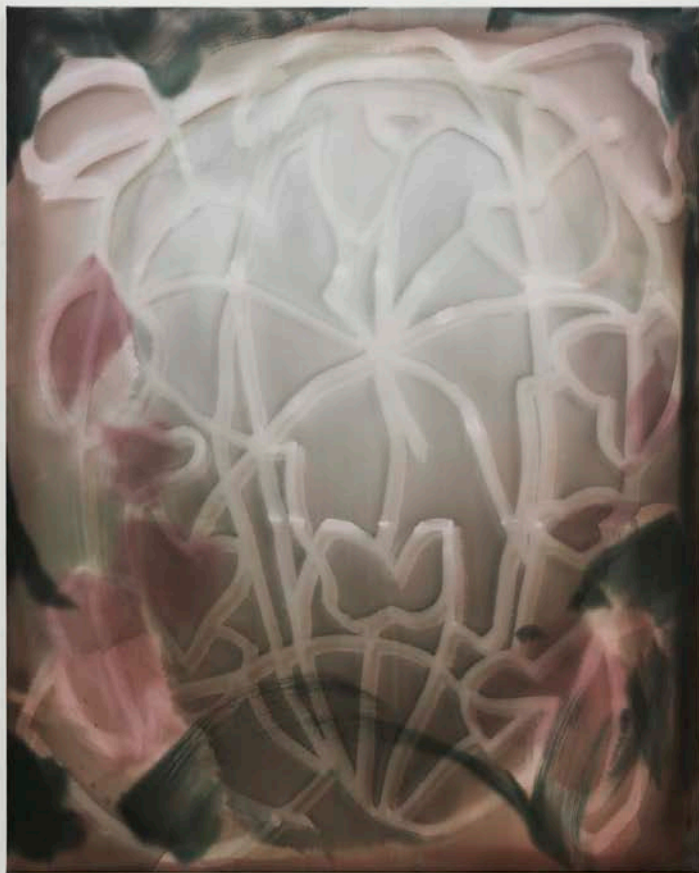


Foxglove (01)
80x180x4,5
UV-sensitive ink
on Duchess Satin





Three-lily
80x80x4,5cm
UV-sensitive ink & chalk pastel
on Duchess Satin

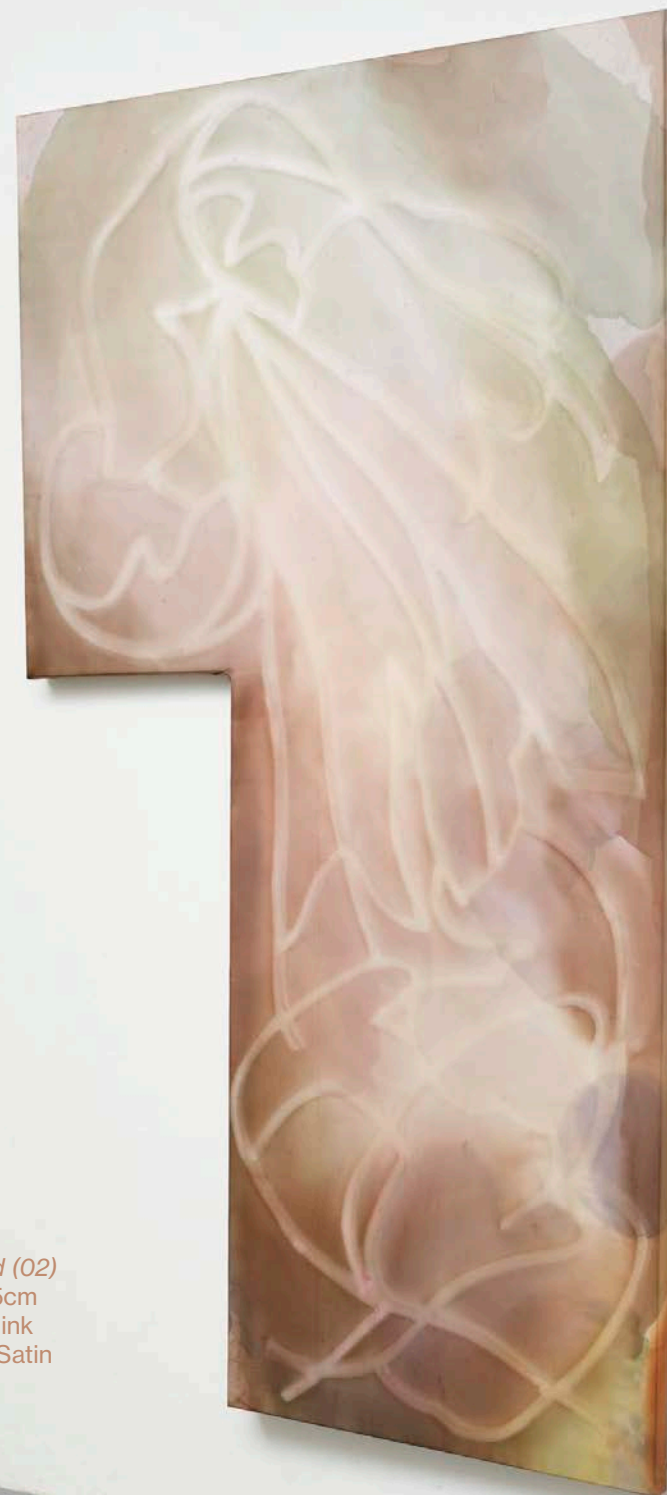


Web casts no shadow
120x150x4,5cm
UV-sensitive ink
on Duchess Satin





Studio Thoughts of the
 Morning of the 8th
 I am grateful to have
 started here! With the
 morning pages I could feel to
 be in the presence of
 such abundant feminine
 energy. The movement of
 the pen perhaps perhaps be



Rose-pleated (02)
 140x250x4,5cm
 UV-sensitive ink
 on Duchess Satin



A coin not spent
55x55x4,5cm
UV-sensitive ink
on Duchess Satin

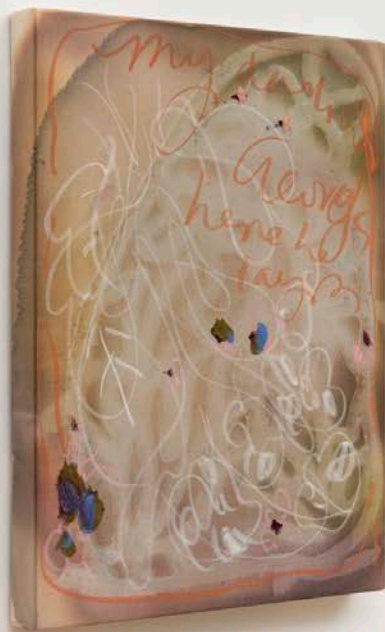




Old thorns from new stems
100x80x4,5cm
UV-sensitive ink & chalk pastel
on Duchess Satin

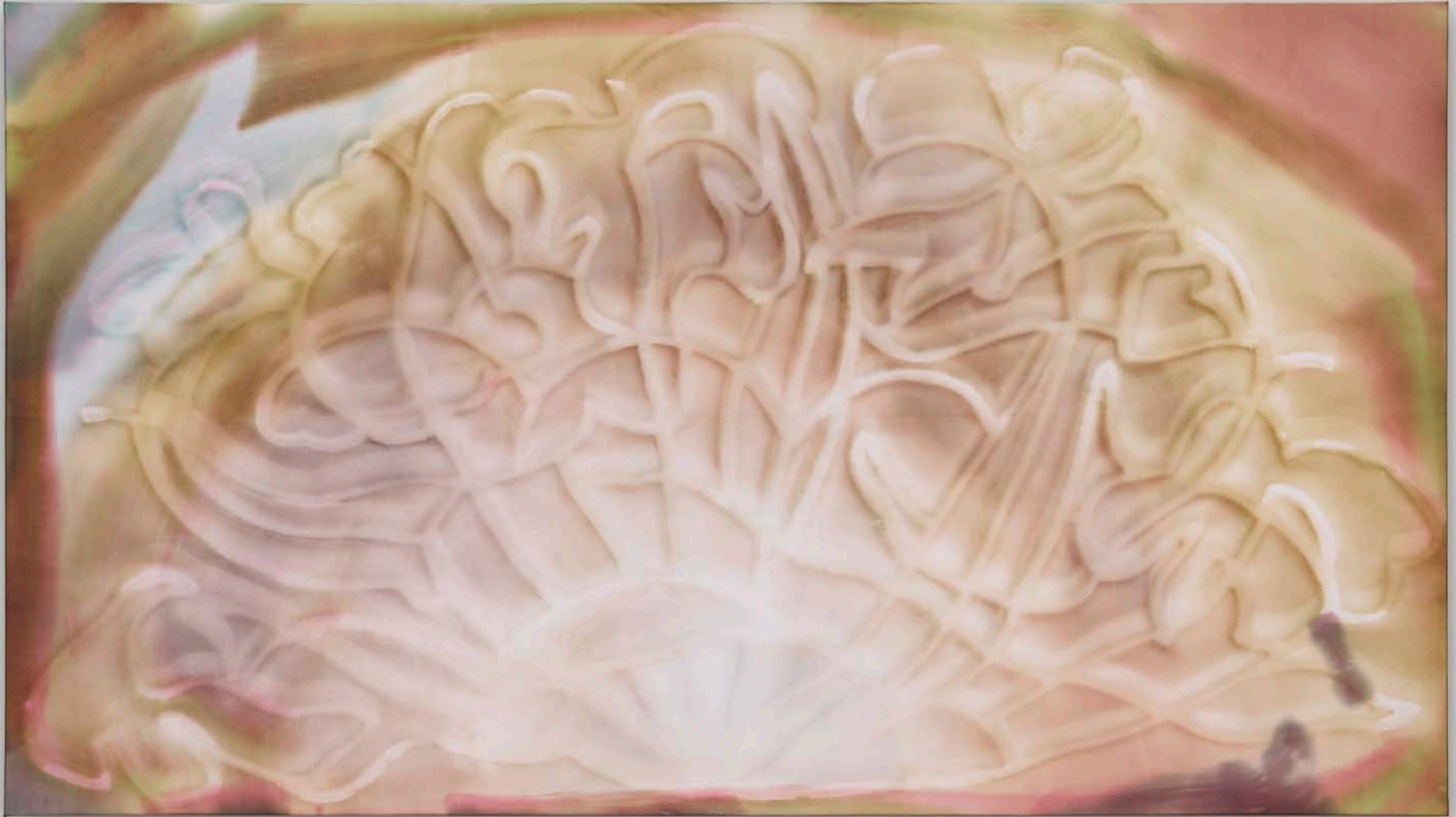


Day to Night (2025)
Dir. Charlotte Mungomery



So shaken, as we are
40x55x4,5cm
UV-sensitive ink, chalk pastel
& oil stick on Duchess Satin

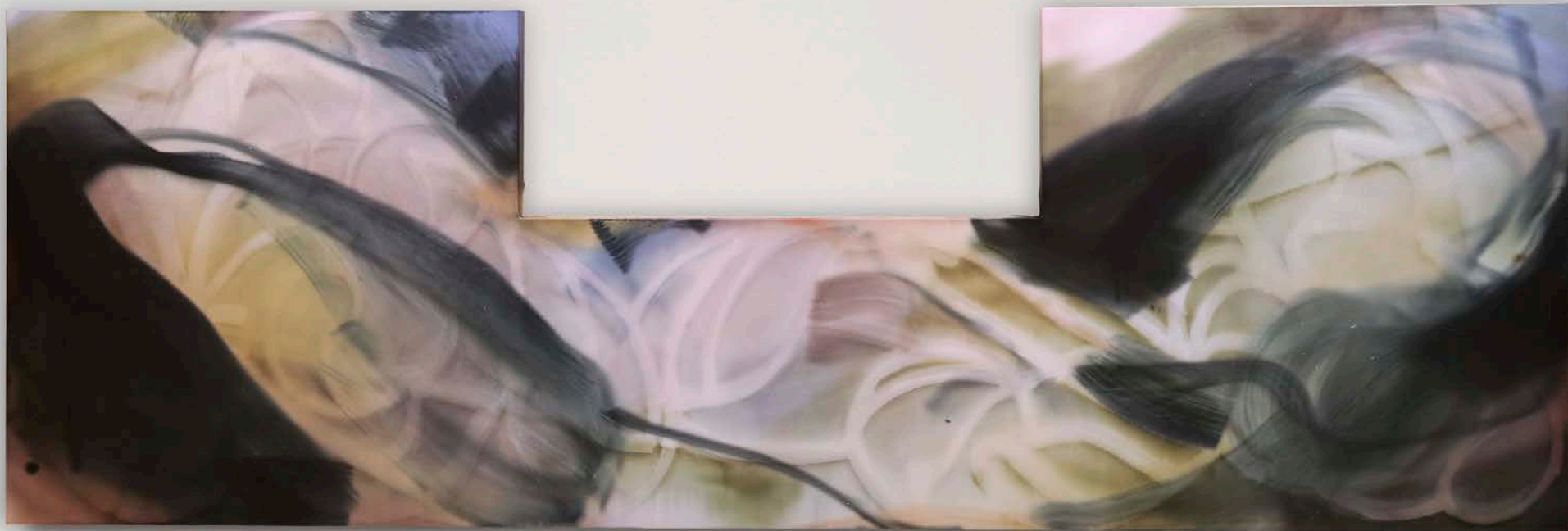




This crowning bitterness
230x130x4,5cm
UV-sensitive ink
on Duchess Satin



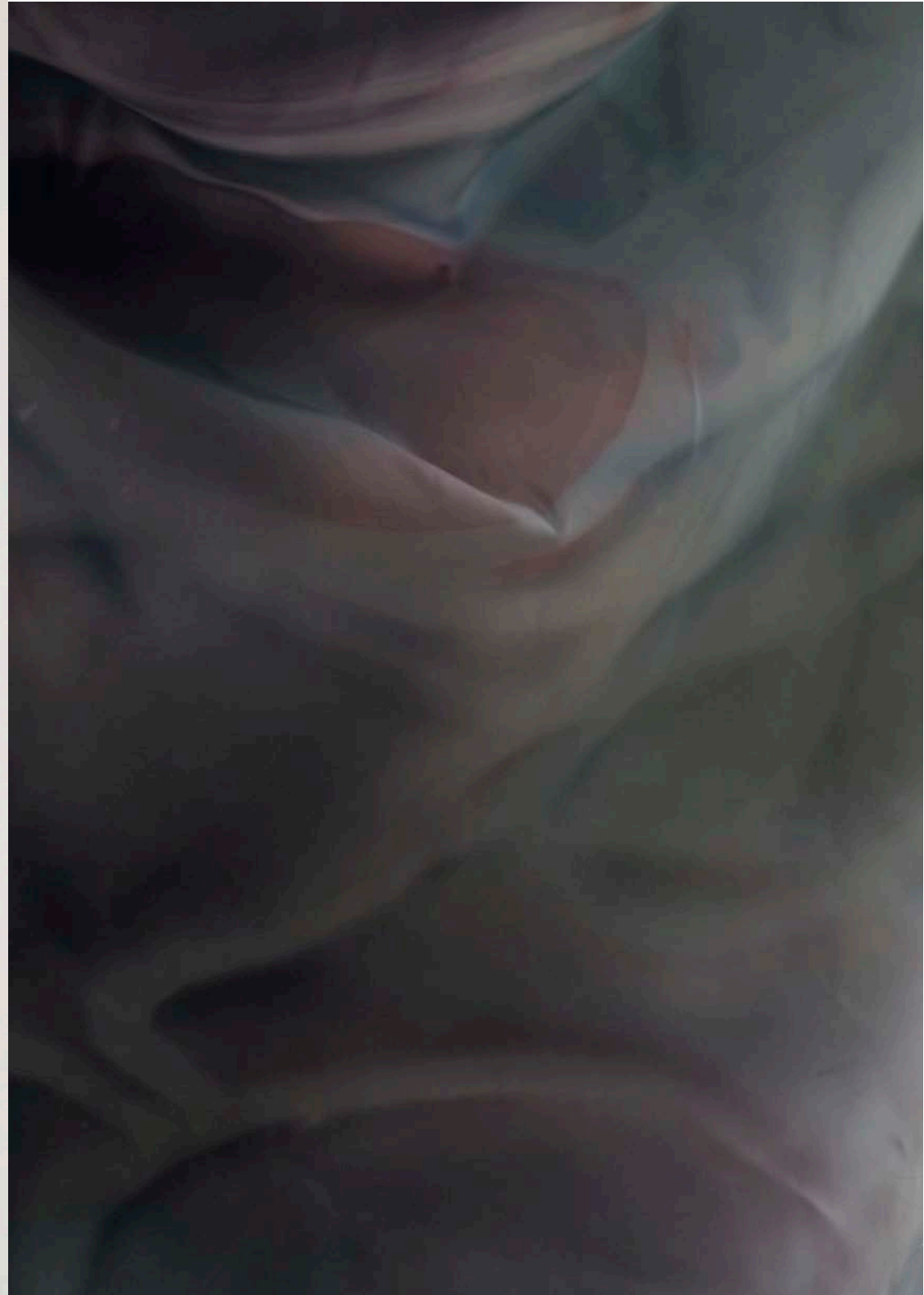
Petalled
40x40x4,5cm
UV-sensitive ink
on Duchess Satin

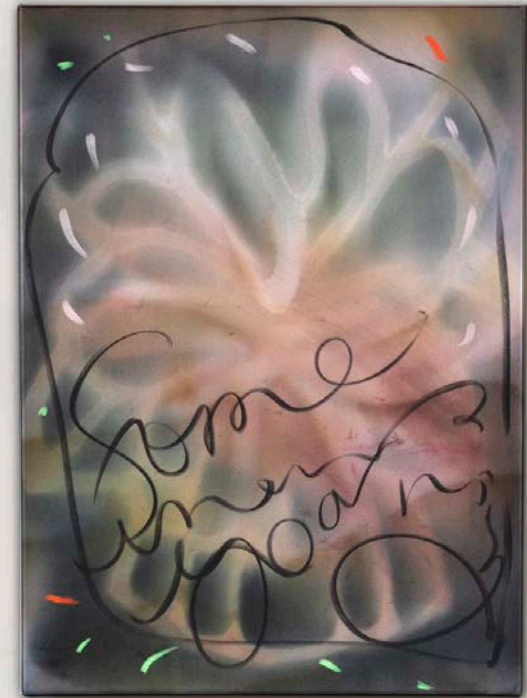


Kinsman of indifference
300x100x4,5cm
UV-sensitive ink
on Duchess Satin

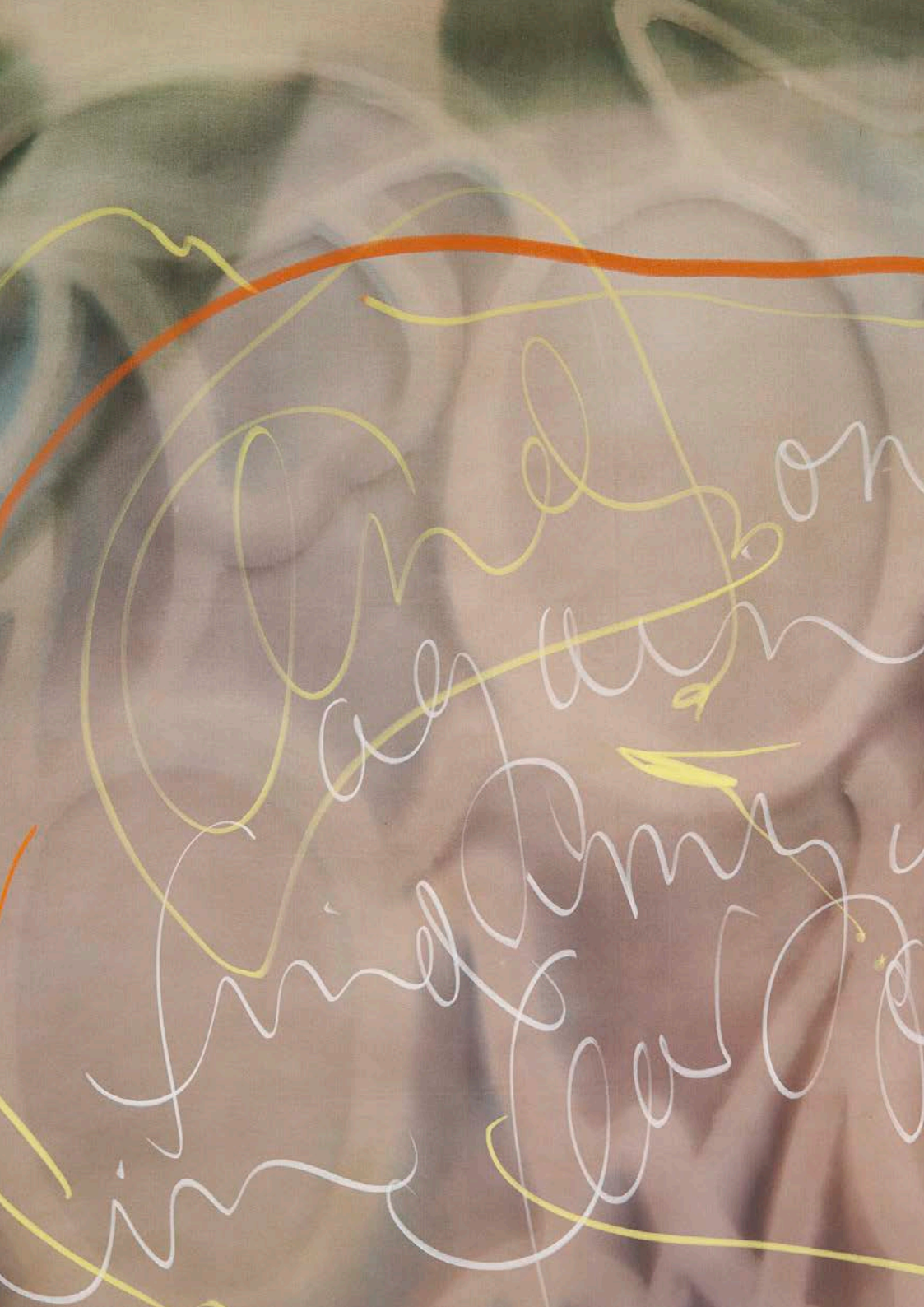


Untrained vine
40x55x4,5cm
UV-sensitive ink
on Duchess Satin





No certain proof
40x55x4,5cm
UV-sensitive ink
on Duchess Satin



Regarded, utterly in vain
 140x180x4,5cm
 UV-sensitive ink & chalk pastel
 on Duchess Satin



Works on Commission



Most stencils used in the creation of these sun-rendered works remain in my personal archive. As such, iterating through colour and tone is a natural and encouraged part of my process. Please reach out directly to view the stencil archive or discuss a specific request.

PHILLIPA ATKINSON

Contact

CV

Phillipa Atkinson
p@phillipaatonkinson.com
+31 6 11 26 41 21

phillipaatonkinson.com

Phillo Works
Louwesweg 1
1066EA Amsterdam
The Netherlands

KVK 94555656
BTW NL005090776B69

2012-2016	BFA Integrated Studio Arts Milwaukee Institute of Art & Design
2018-2025	Colourist & Brand Manager KOOLJ
2025	<i>In the Shadow of a Line</i> Wandler Amsterdam, NL <i>Phillipa Atkinson x Wandler</i> Selfridges London, UK <i>Aura, Flower, Butterfly is all for you</i> JPS Gallery Tokyo, JP <i>Material Futures</i> The Frozen Fountain Amsterdam, NL
2024	The Frozen Fountain PAN Amsterdam, NL <i>The Garden Gate</i> A Flag Gallery Amsterdam, NL
2023	<i>Fields & Tendrils</i> A Flag Gallery Amsterdam, NL
Press	<i>A Place in the Sun</i> Manera Benelux October 2025 <i>Everything is Seasonal</i> Harper's Bazaar NL April 2025 <i>Wandler Presents Phillipa Atkinson</i> Numéro Netherlands May 2025 <i>Wandler x Phillipa Atkinson</i> Modern Love Magaine June 2025

Phillipa Atkinson (b. 1994, Australia) paints to access inner worlds. Her medium is sun and body – physical truths that ground her work in the present moment. Surrender to environment serves to reconcile her sprawling roots: a home in the now is a home for always.

PHILLIPA ATKINSON



Day to Night (2025)
Dir. Charlotte Mungomery

PHILLIPA ATKINSON