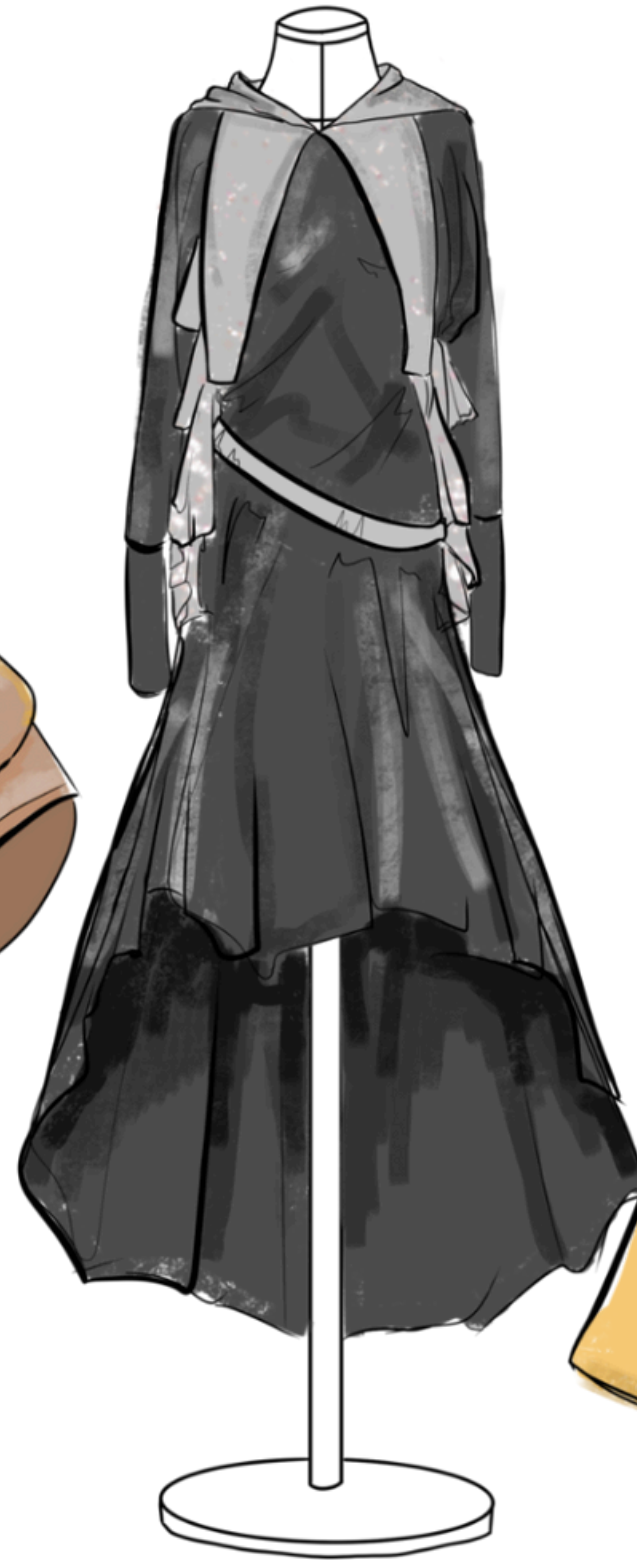
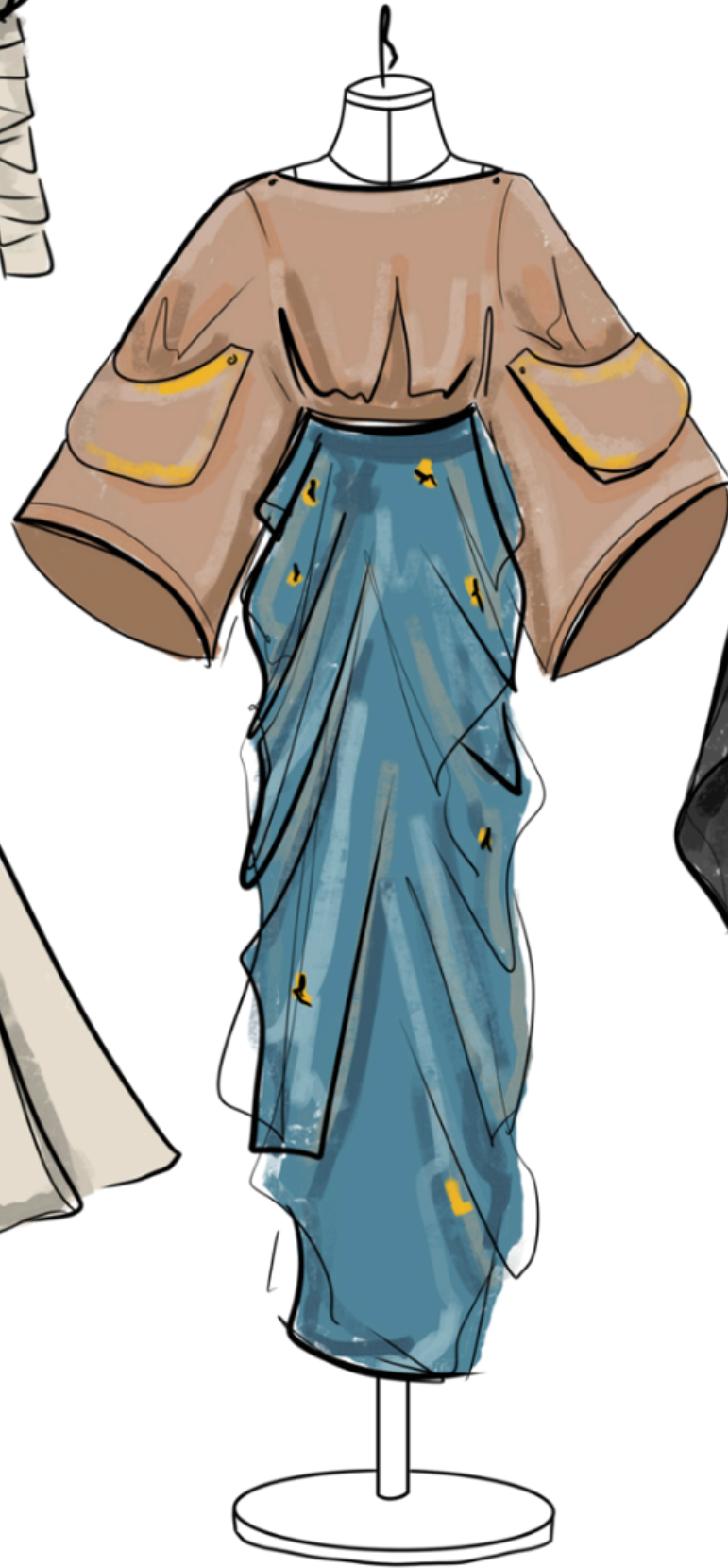


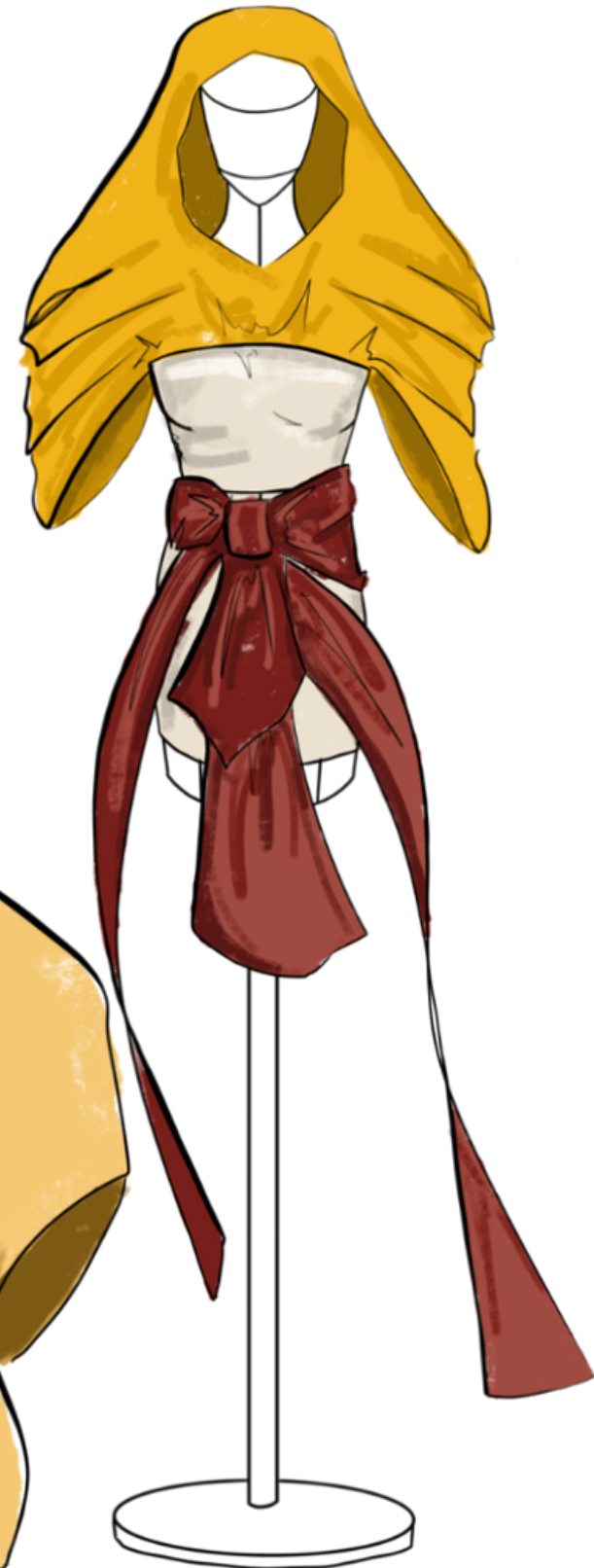
LOOK #1

LOOK #2



LOOK #3

LOOK #4



LOOK #5



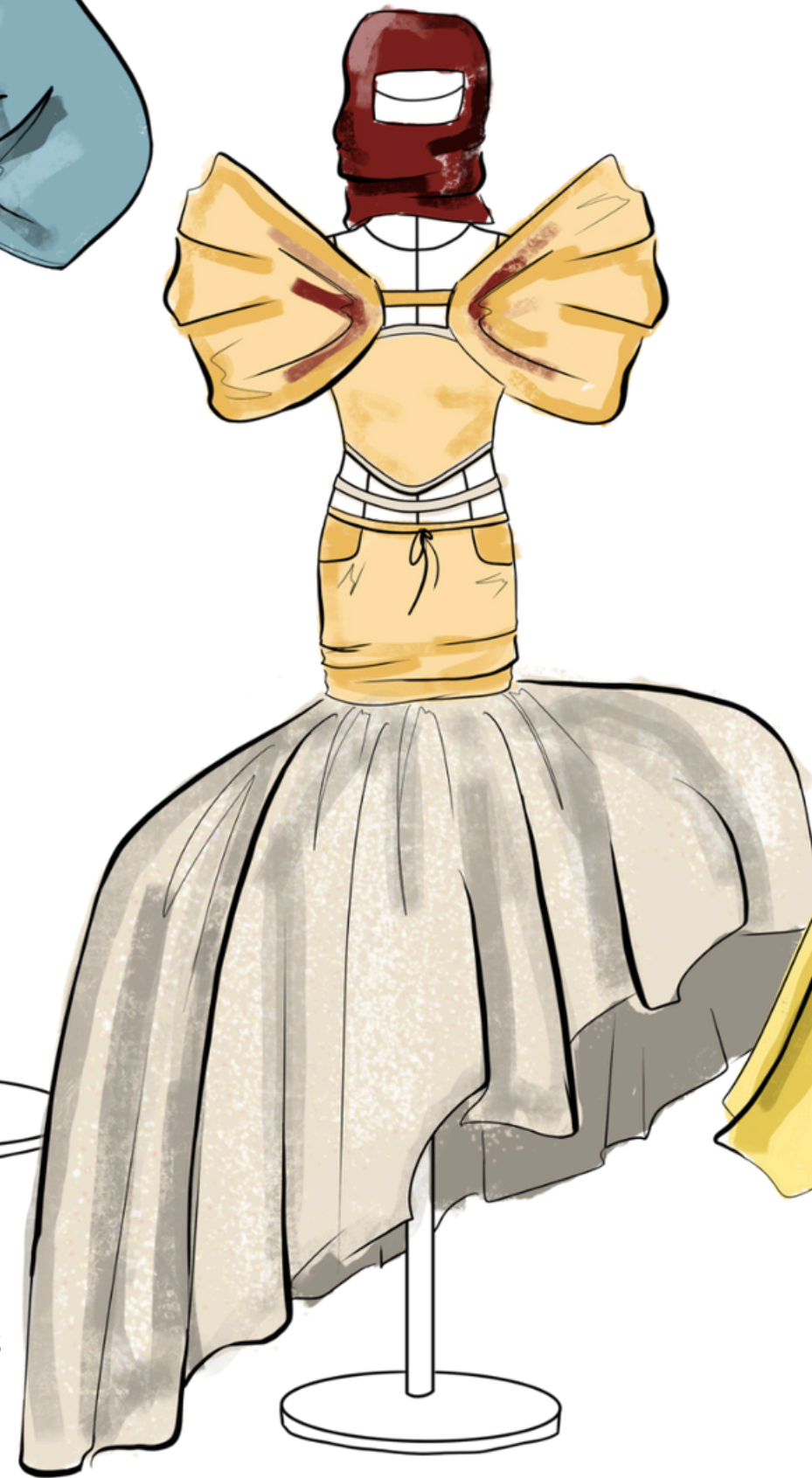
LOOK #6

LOOK #7

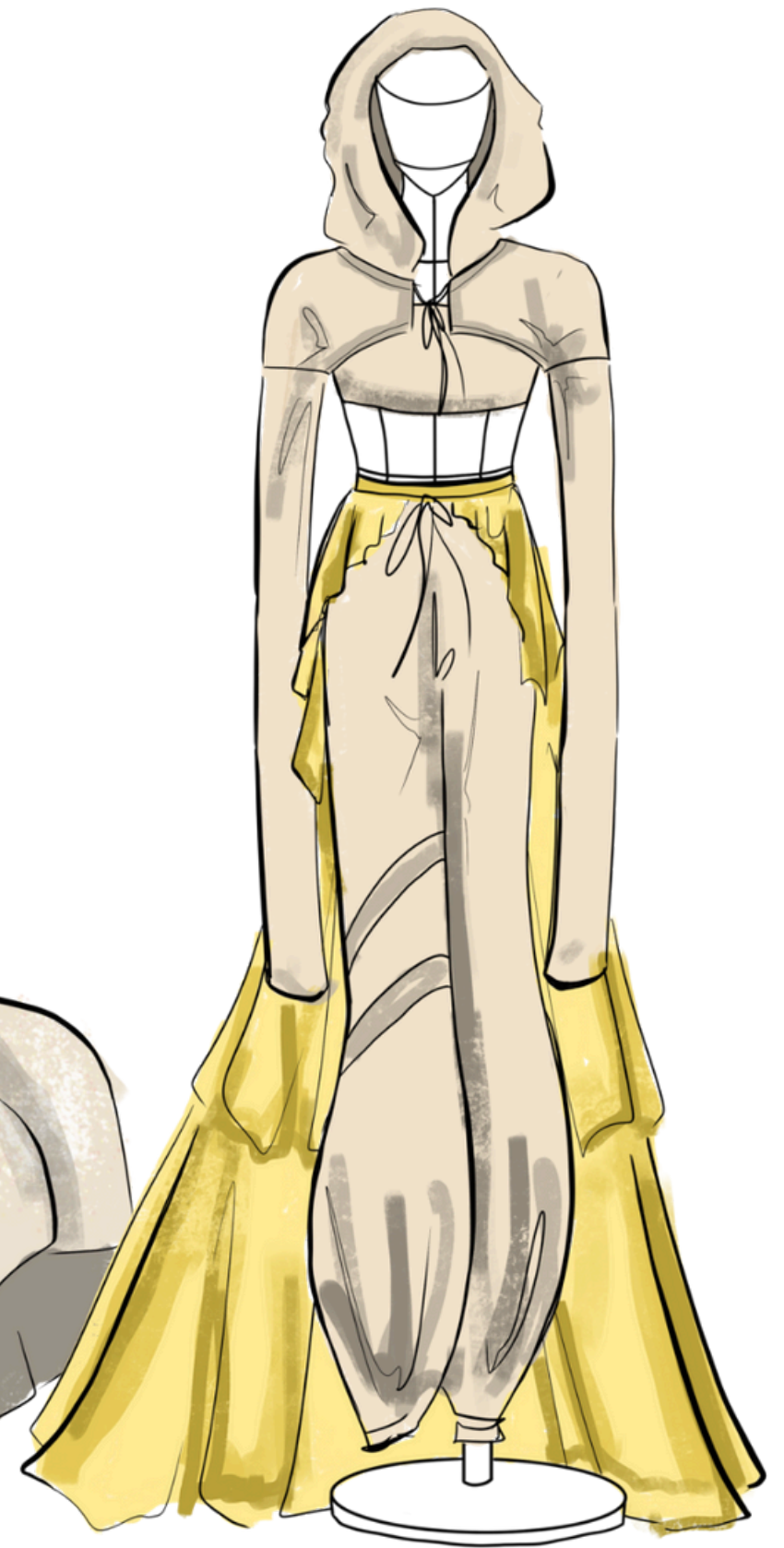


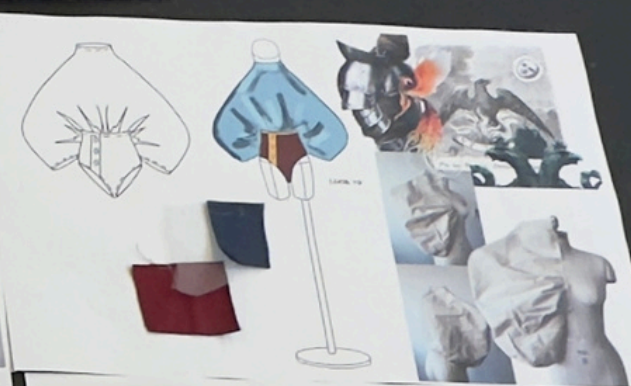
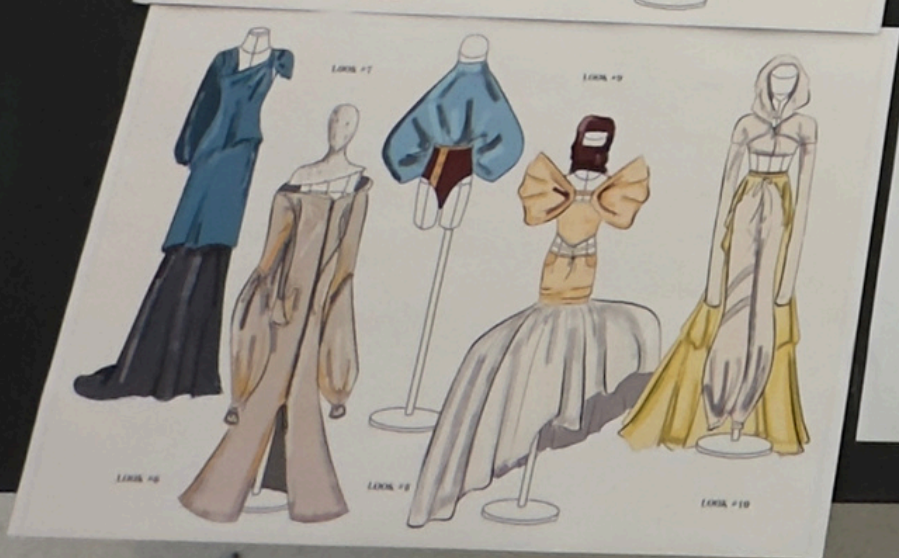
LOOK #8

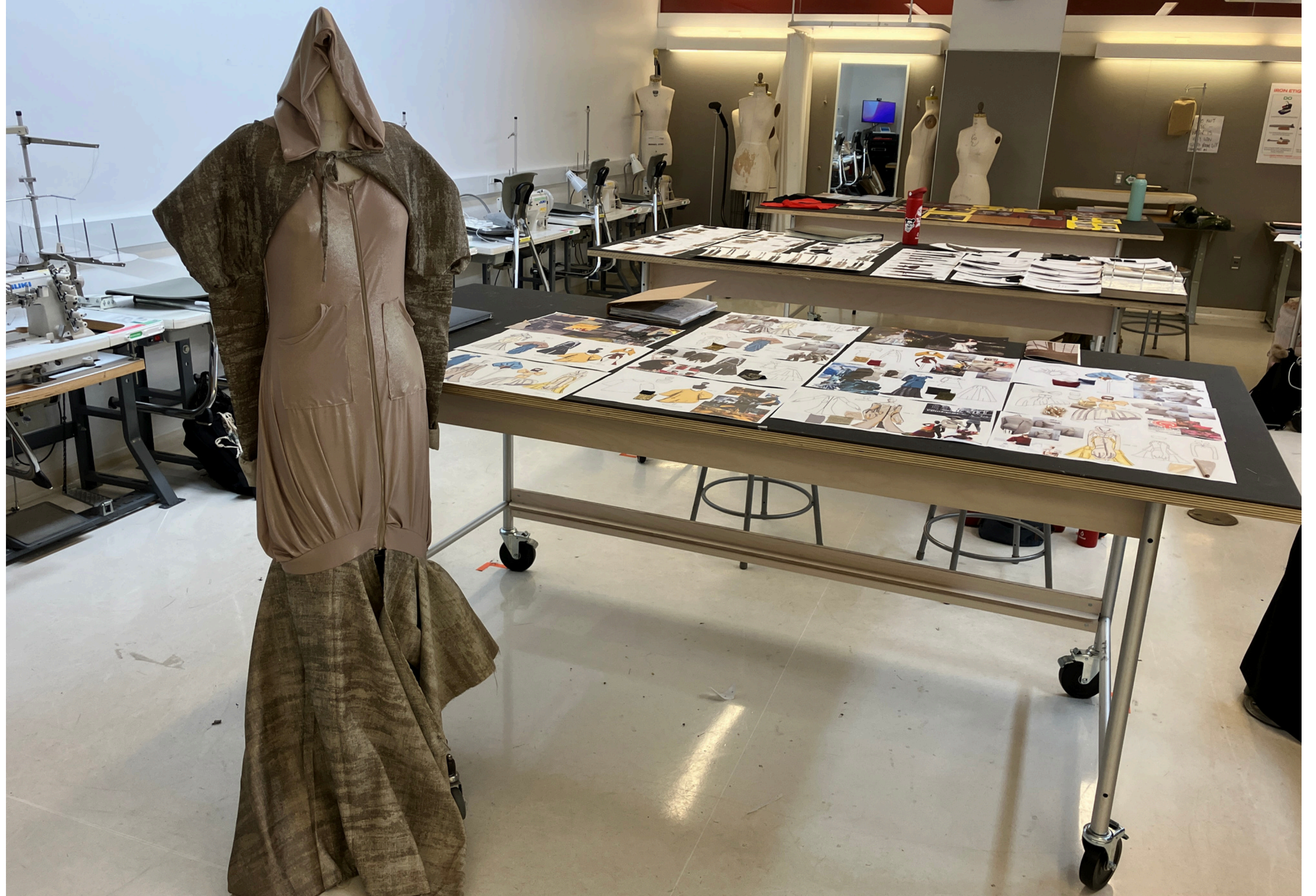
LOOK #9

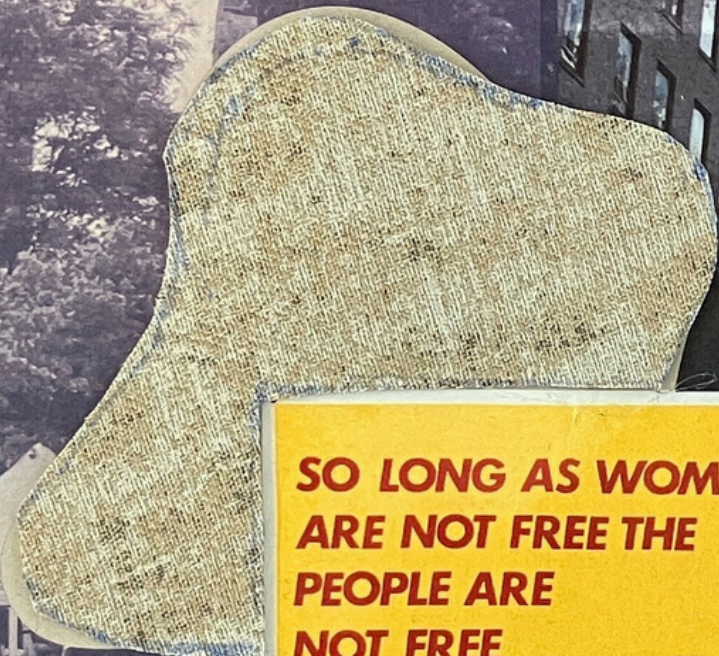
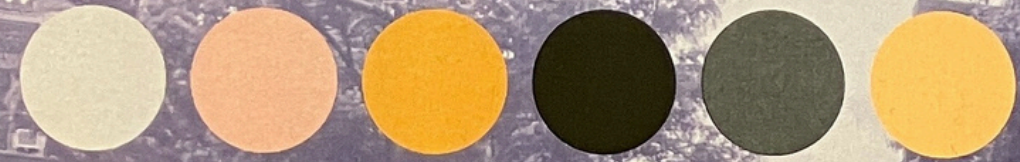


LOOK #10

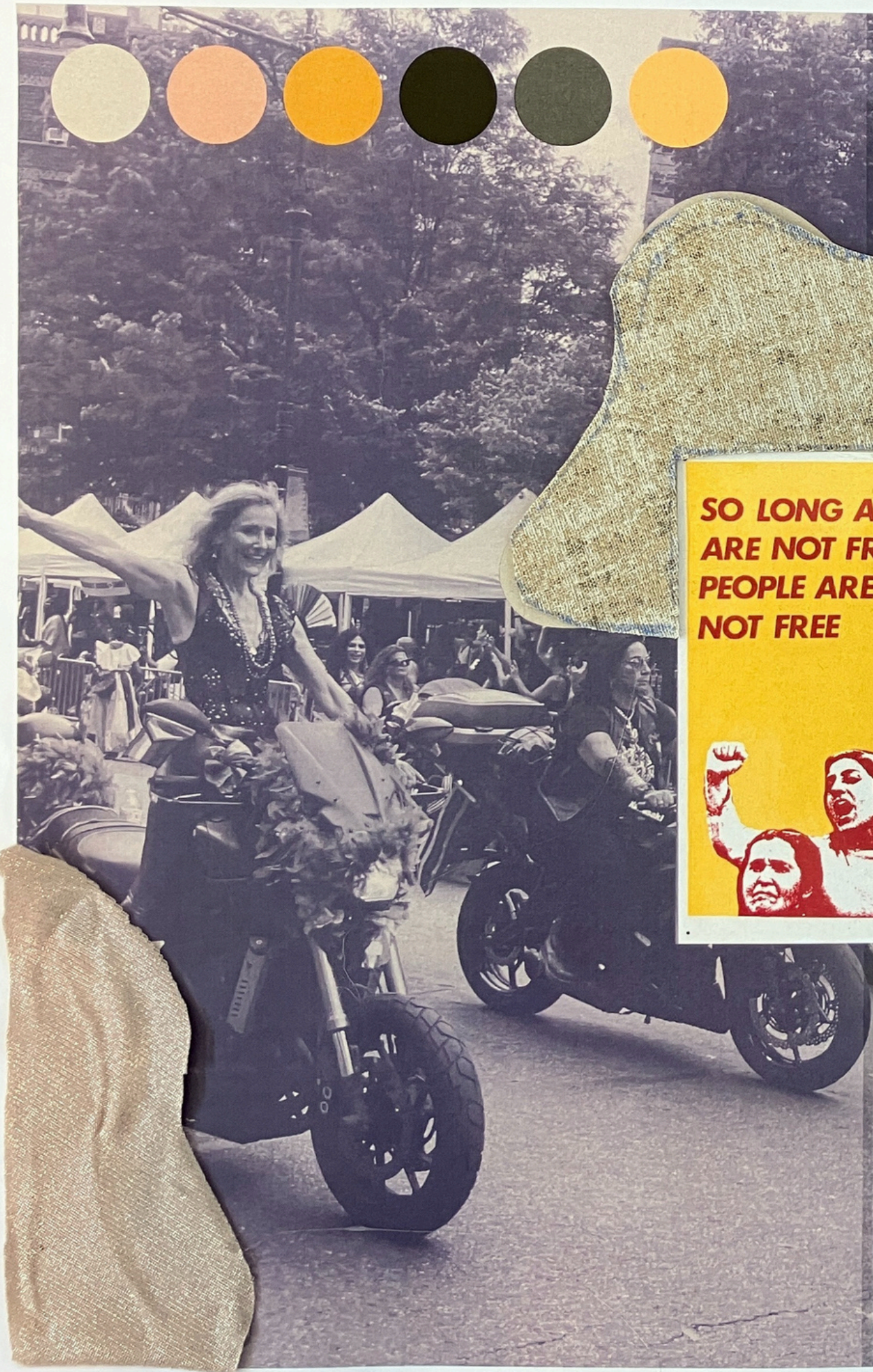






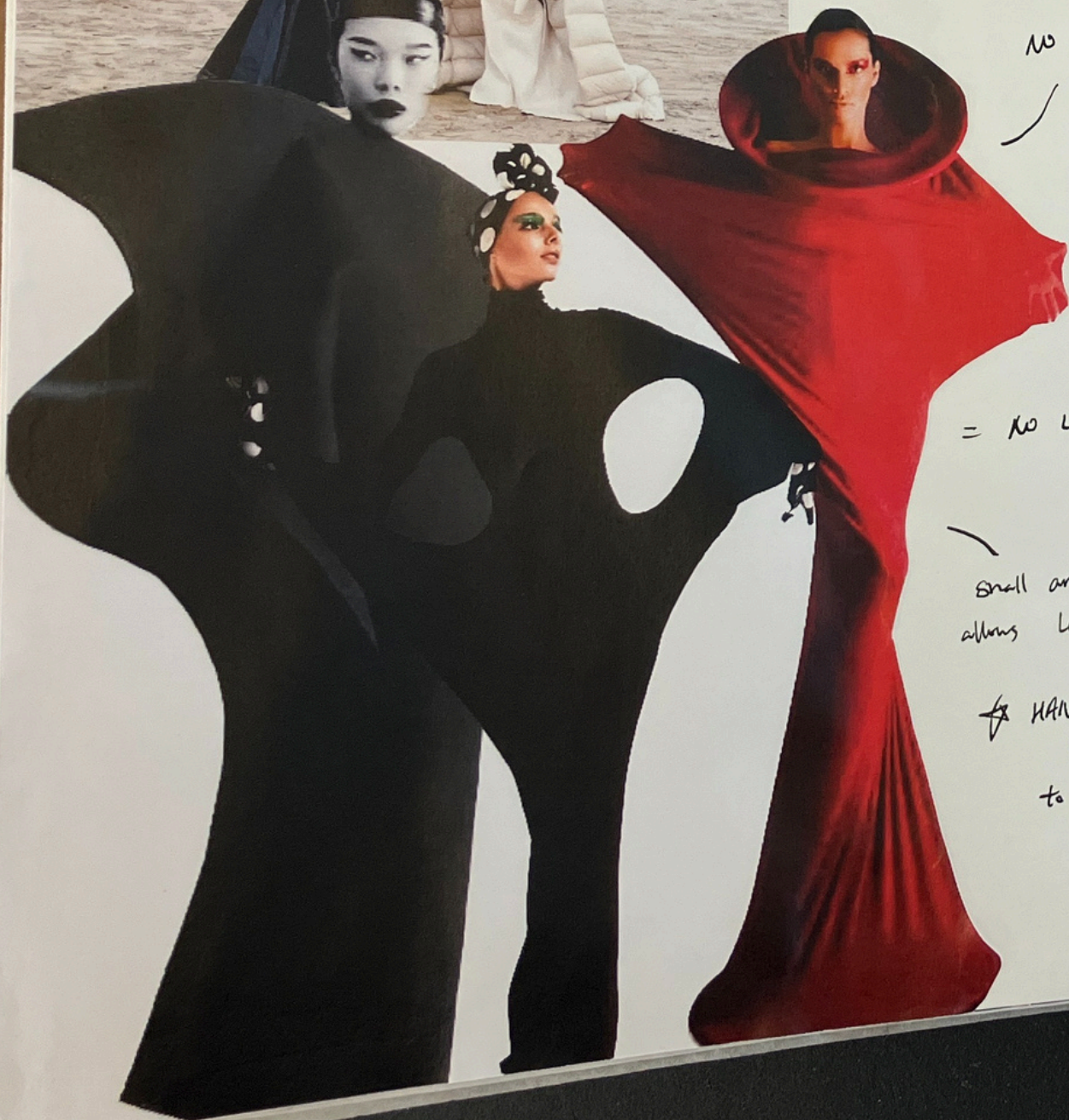


**SO LONG AS WOMEN
ARE NOT FREE THE
PEOPLE ARE
NOT FREE**





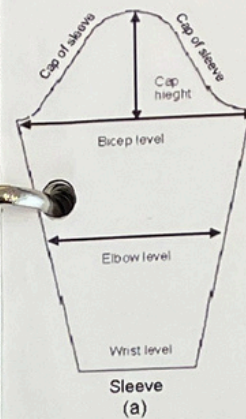
Restrictions in fashion



= No lift

Small armhole allows less lift

★ HANDS ARE PHYSICALLY UNABLE to LIFT



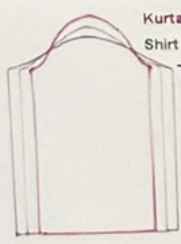
Kurta Sleeve
Biggest cap height
Smallest lift of sleeve
Smallest bicep



Shirt sleeve
Cap height less than Kurta and more than Tee shirt
Lift of sleeve more than Kurta and less than Tee shirt
Bicep bigger than Kurta and smaller than Tee shirt



Tee shirt sleeve
smallest cap height
Biggest lift of sleeve
Biggest Bicep



Pattern of Kurta and Tee shirt sleeve superimposed

Considering Human Ergonomics

Starts of Cap height & sleeve lift pattern into garment constructions

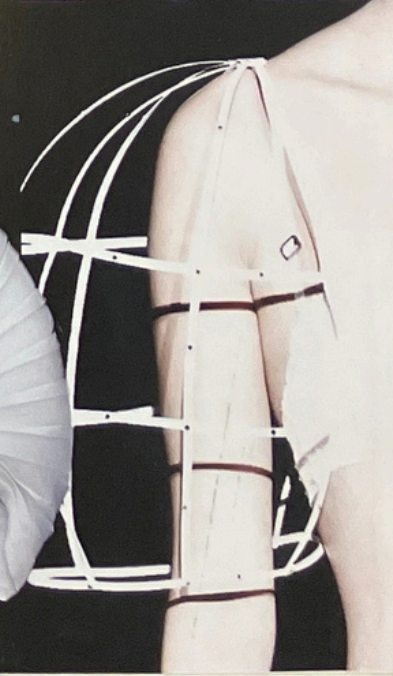
Additional fabric on shoulders

also unable to lift arms

Structural garments

huge sleeves

Bubble sleeves / pleated sleeves



How do you empower yourself?

	Way of empowerment
Lana	Listen to Lil Uzi Vert and Kanye West.
Jenny	Puts on headphones and pretends not to care. Sometimes dresses normally and feels better with friends.
Nanjun	Carries the value of "respecting teachers and emphasizing morals" but feels burdened by the situation.
Alicia	Focuses on maintaining calmness and allowing time to resolve the issue.
Jacklyn	Chooses to ignore and not engage.
Vy	Recognizes that their behavior is their problem, stays calm and doesn't engage with the negativity.
Raiya	Pays less attention to those people, focuses on self-energy.
Candice	No one to tell, feels mad, uncomfortable, and frustrated by encountering irrational people.

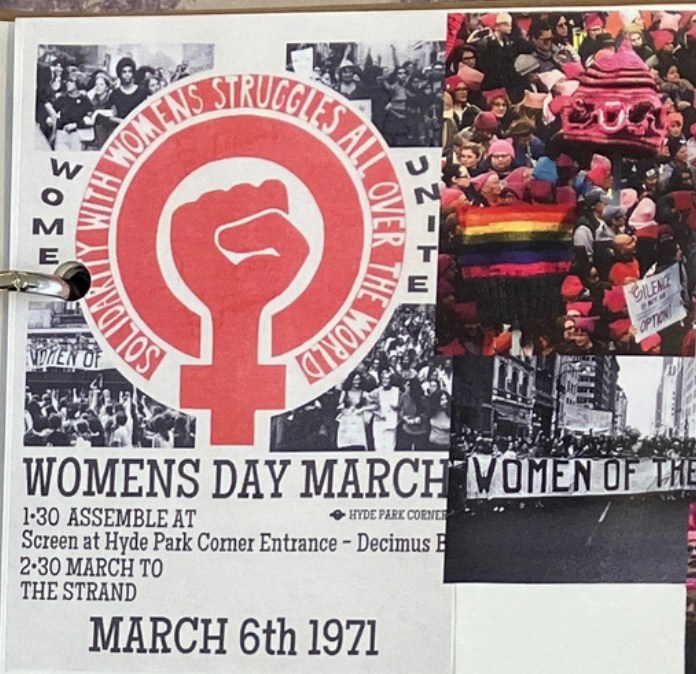
In what situations do you feel like you couldn't speak up?

What was your initial reaction / feeling?

	Situation	Initial Reaction
Lana	In the subway, when someone smells bad.	Wow, stinky. Breathe really slowly, think about fresh air.
Jenny	In China, when dressed fancy and feels it's too exaggerated.	Awkward, conscious of others' gazes, especially in the subway.
Nanjun	In class, unable to argue with the professor's bad attitude towards students.	Cannot talk back in that situation, but regrets it later. Feels unjust and awkward.
Alicia	When she gets interrupted while talking or when her sister starts arguing irrationally.	Hangs up the call, waits until they are calm. Lets time heal the situation.
Jacklyn	On the subway, when a homeless person shouts racist remarks.	Uncomfortable, stereotypes make her hesitant to respond.
Vy	Whenever she gets yelled at, especially when her boyfriend raises his voice.	Stays silent, doesn't want to react to meaningless yelling.
Raiya	Currently having a conflict with friends and experiencing disagreement.	Behaves a little differently, doesn't feel treated like a person.
Candice	In the airport, when homeless people are racist towards Asian girls and she is alone on the streets.	Decides to ignore, can't hurt them, can't even speak up.

SITUATIONS WHERE PEOPLE COULDN'T SPEAK UP

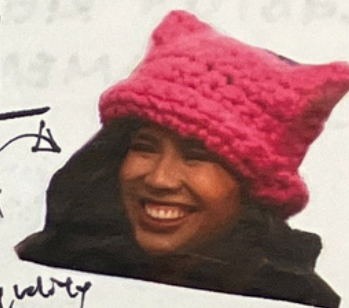
- ① Workplace hierarchy — fear of retribution
 power imbalance / supervisors & subordinates
- ② Aggressive personality
 intimidating / dismiss others' opinions
- ③ Cultural / societal norms — fear of judgment
 unconventional viewpoint / prevailing beliefs
- ④ Discrimination / marginalization
 underrepresented groups / lack of inclusivity
- ⑤ Fear of conflict — silence
 uncomfortable confrontations
- ⑥ Lack of confidence
 low self-esteem / assert themselves
- ⑦ Fear of judgment — speaking engagements
 ridiculed / embarrassed
- ⑧ Lack of opportunities
 limited access / suppressed



WOMEN'S MARCH

Symbol: pussy hat

→ Gender equality



outfits: pink pussyhat knitted in at ears

sign of solidarity / reclaim derogatory language

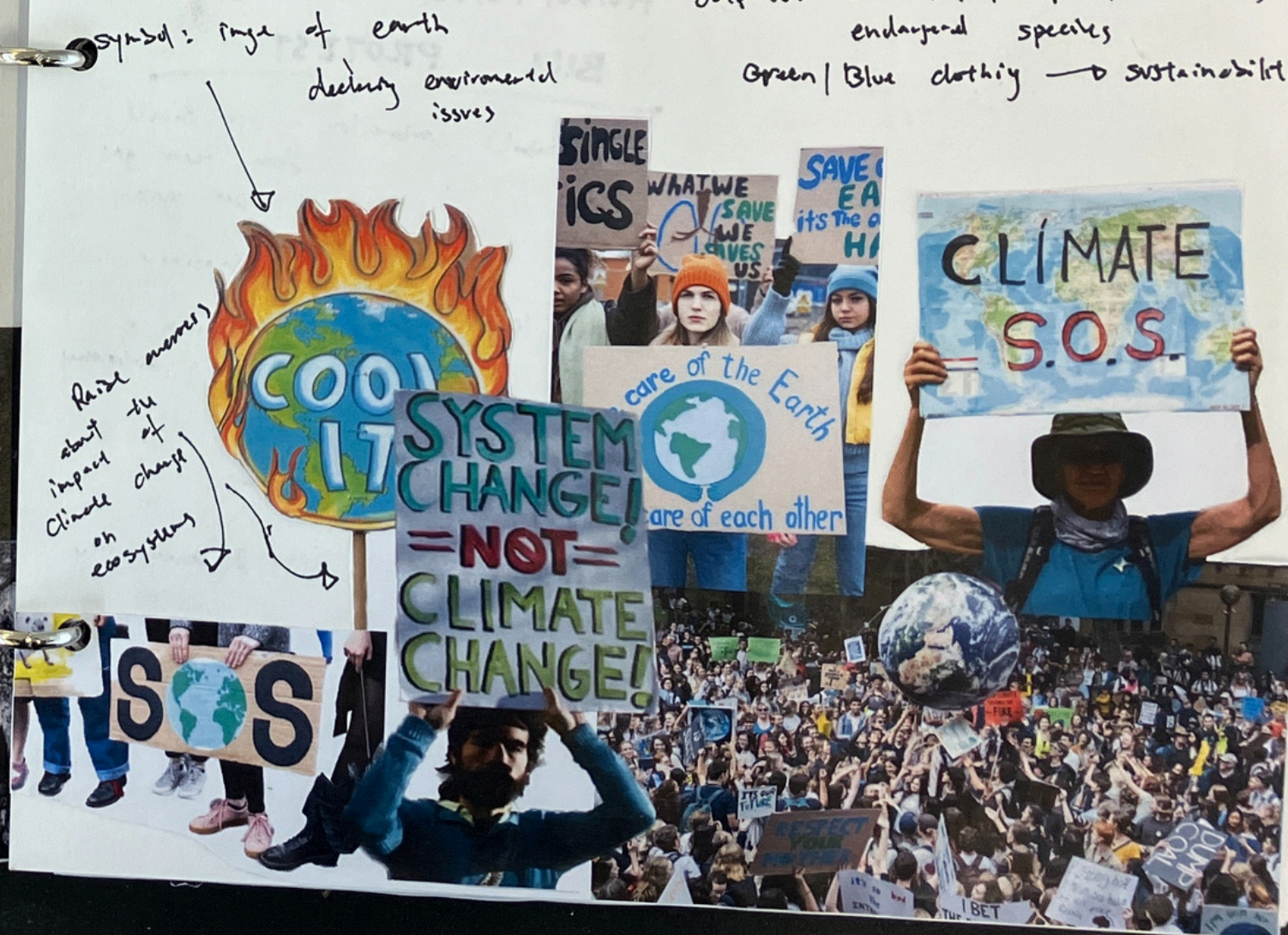
→ carried signs with empowering messages advocating women's right

CLIMATE CHANGE

PROTEST (e.g. Friday for Future)

symbol: ring of earth
 declining environmental issues

outfits: costumes / face paint depicting endangered species
 Green / Blue clothing → sustainability



LGBTQ+ RIGHTS MOVEMENT

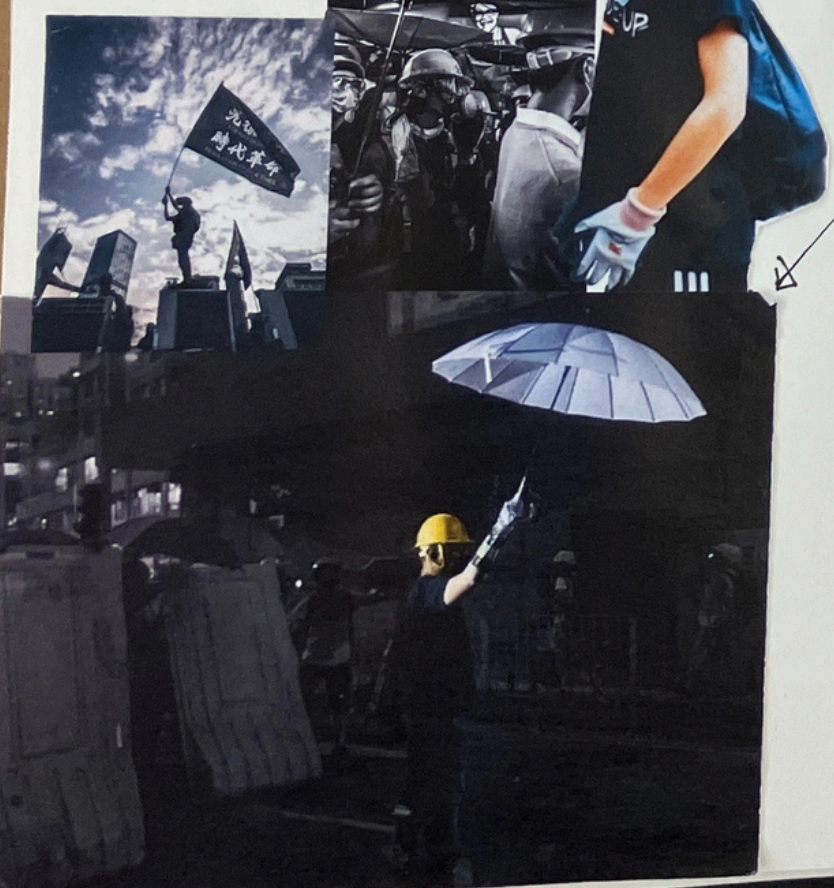
Symbol: the rainbow flag
 (designed by Gilbert Baker)
 ↓ pride ↓ diversity
 outfits: Rainbow motifs
 Flamboyant / colourful outfits
 ↓ identity
 exaggerated



HONG KONG ANTI-EXTRADITION BILL PROTEST

Symbol: umbrella - to shield from tear gas / pepper spray
 ↓ protection ↓ democracy
 Yellow Ribbon - preservation of Hong Kong's autonomy

outfits:
 ① All black attire
 ↓ sign of unity & anonymity
 ② Gas Mask & goggles
 ↓ protection from police



#ME TOO MOVEMENT

Symbol: Hashtag (#AME200)
 ↓ collective sharing of experiences & raise awareness about the prevalence of sexual harassment
 outfits: Black clothing
 ↓ unity ↓ support for survivors
 raised hands / fist symbol



BLACK LIVES MATTER MOVEMENT

Symbol: raised fist - associated with civil rights movements
 ↓ resistance against racial injustice

outfits: "I can't breathe"
 t-shirt / mask

↓ address police brutality and systemic racism

Hoodie → racial profiling
 ↓ Criminalisation of black individuals

Black clothing - unity



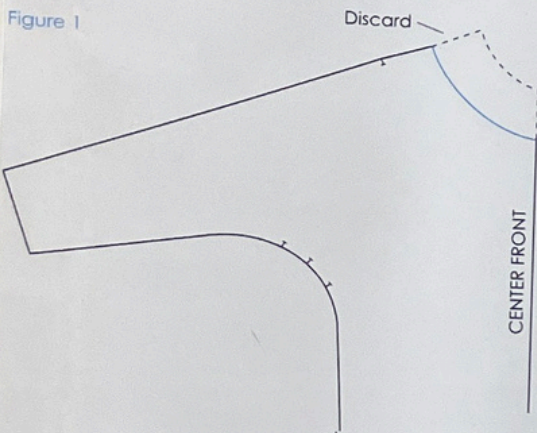
KIMONO DRESS

Design Analysis: Designs 1 and 2

Design 2 is based on the kimono foundation. The basic neckline is cut away before fullness is added around the neck for gathers. The sleeve is either shortened for a loose-flowing sleeve or gathered at the hemline and banded or encased with elastic. The front pattern is copied for the back pattern.

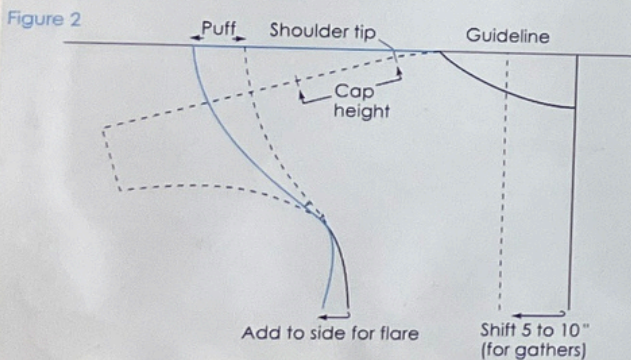
Pattern Plot and Manipulation

Figure 1
Trace the front kimono foundation and draw a scoop neckline as shown. After the front pattern has been modified, it is copied for the back pattern.



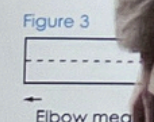
Design 2

Figure 2
Square a line. Place the kimono pattern in the square and shift to desired fullness for gathers (10 inches). Add to side seam 5 inches or more. Draw desired sleeve length from shoulder tip to 'puff.' Draw a curved hemline for sleeve. Draw a sleeve band, if required. Trace for back.



The sleeve entry is controlled by elastic (or by a sleeve band).

- Figure 3
- Sleeve band.
 - Length to 1/2 inch.
 - Width: 2 inches.



loose-flowing sleeves with big armhole to allow wearer to lift hands and be comfortable in.

Design 1



KIMONO DRESS

Based on kimono foundation

neckline gives fullness

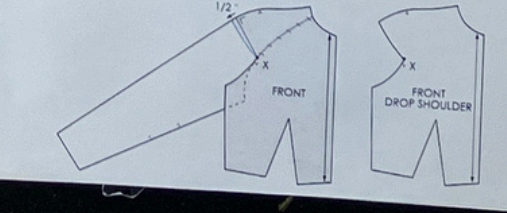
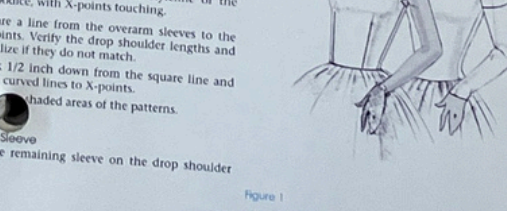
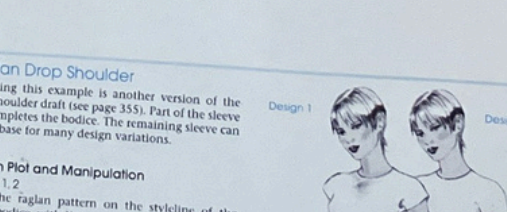
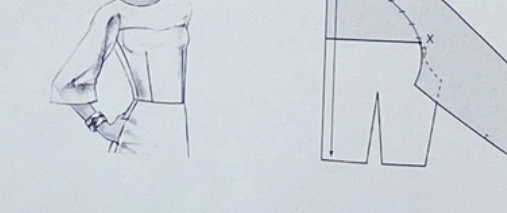
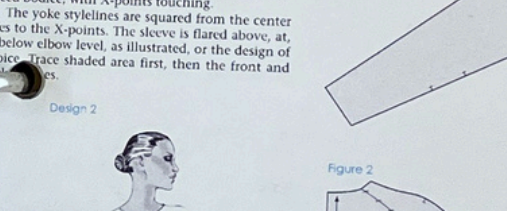
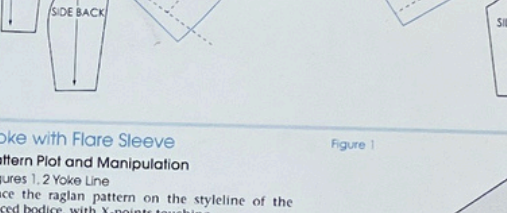
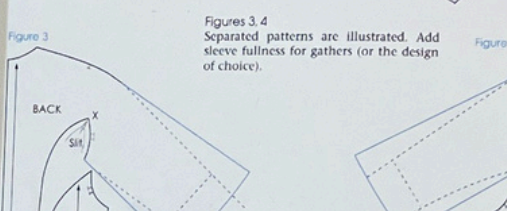
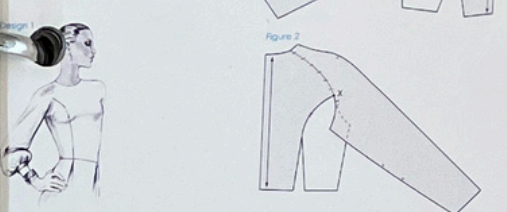


Design 2

Design 3

RAGLAN DESIGN AND VARIATIONS

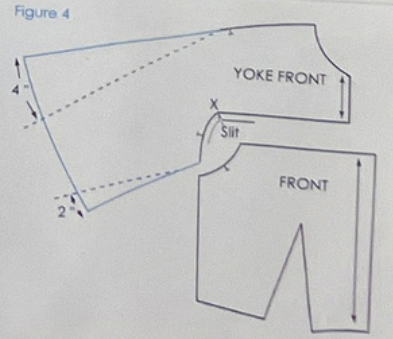
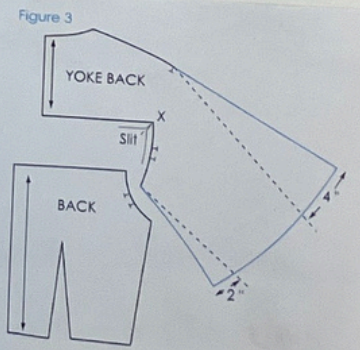
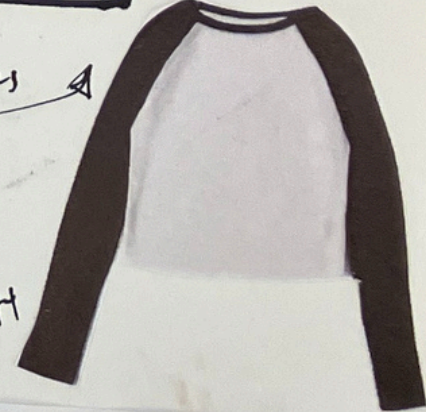
The raglan is a very versatile foundation for creating other related designs. Stylelines can be drawn in any direction from point X of the draft as illustrated in the following: armhole princess (as illustrated on this page); yoke (see page 353); and drop shoulder (see page 354). Design jackets and dresses using the principle of X.

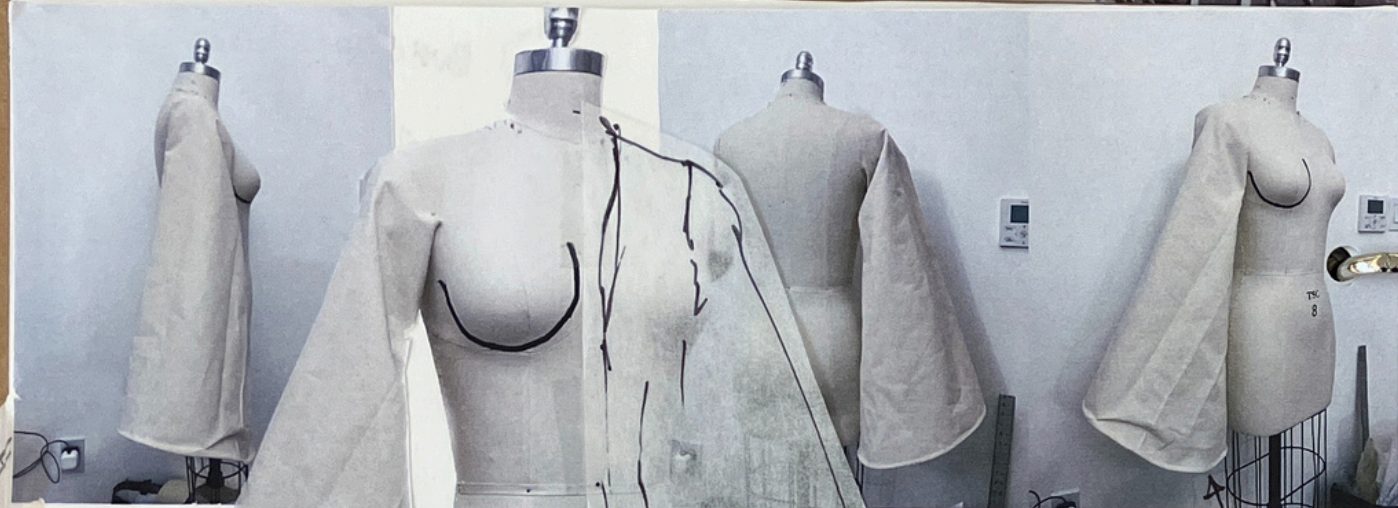


RAGLAN SHIRT

Yoke with sleeves

Drop-shoulder allows high lift





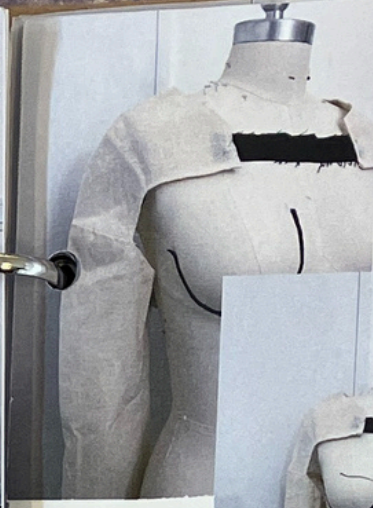
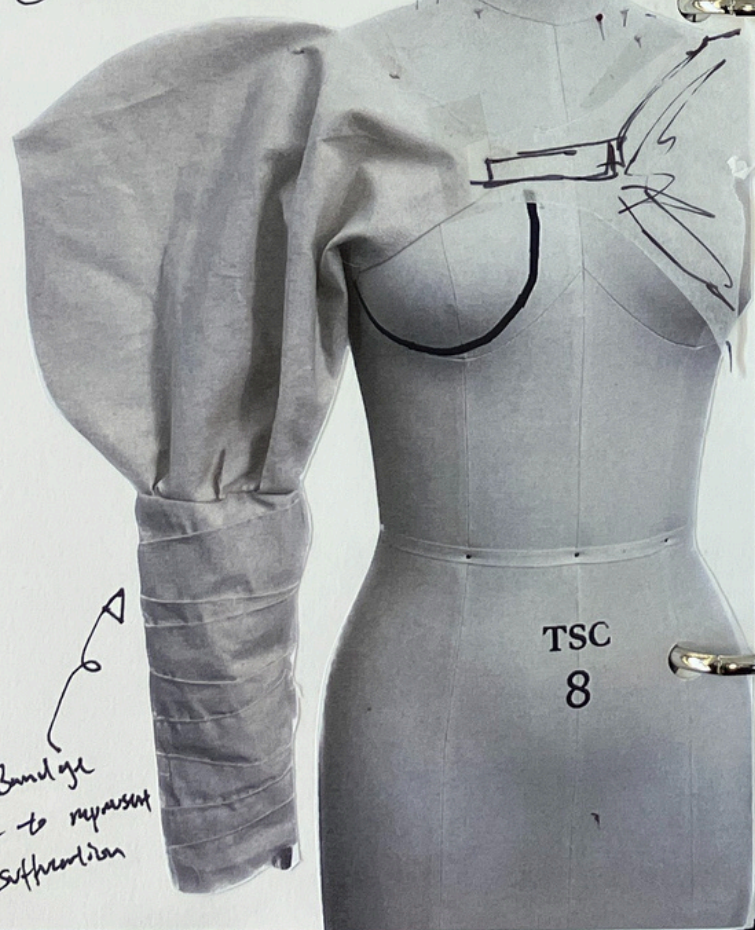
③ Flare sleeves

w/ horse hair
to hold structure

④ Gathered Puff sleeves



Bundage
= to represent
suffocation



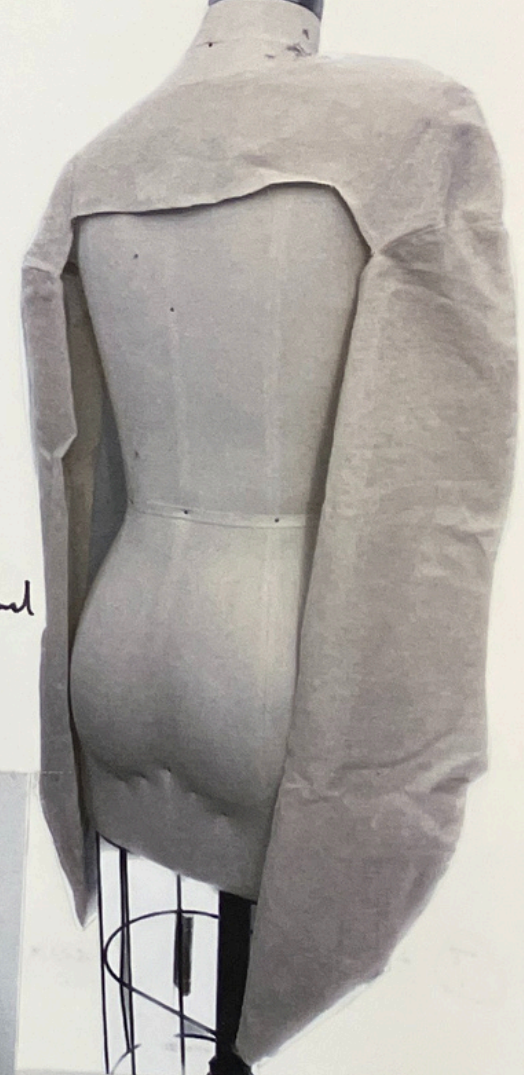
⑥ knit draped
sleeves



⑤ Raylen sleeves

armhole half-opened
= high lift

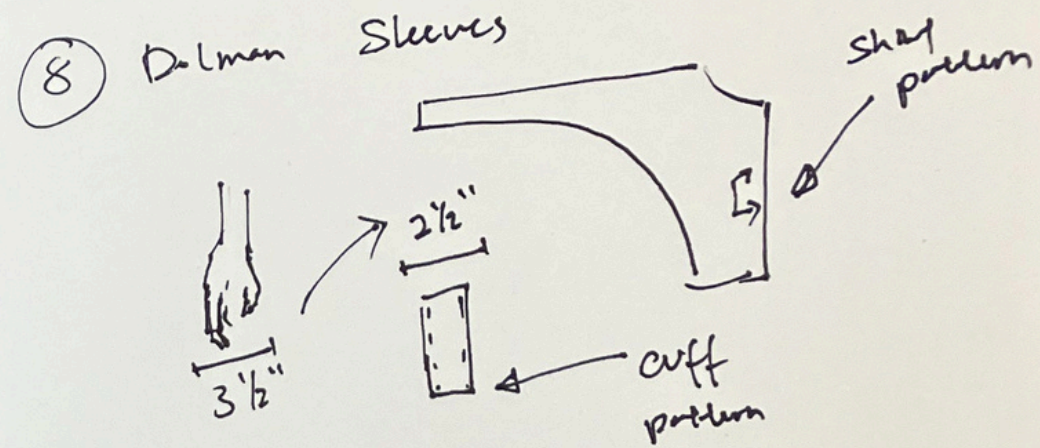
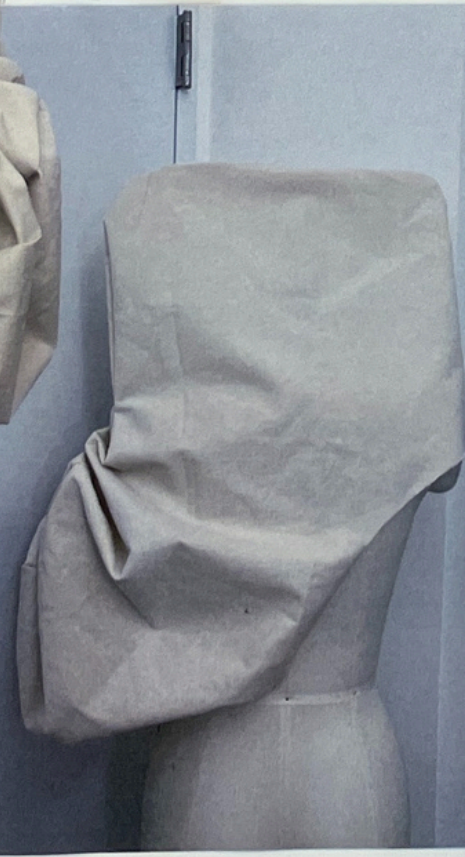
something
that holds



huge armhole
* fabric weight
pulls down



⑦ Huge hood + sleeves

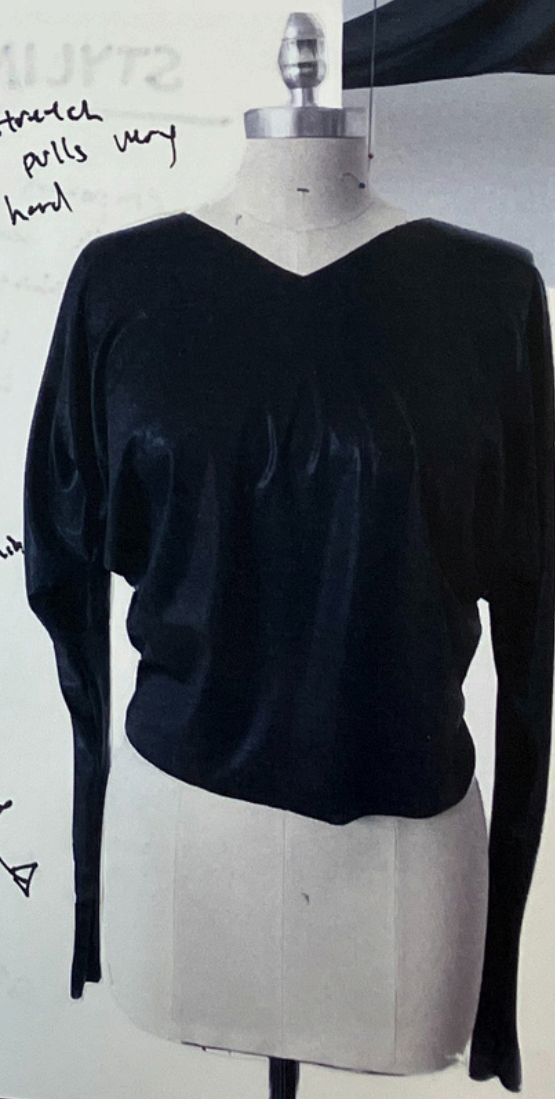


"Bartman" sleeves
= allows very high lift



Adds stretch but pulls very hard

Cuff cut on cross grain

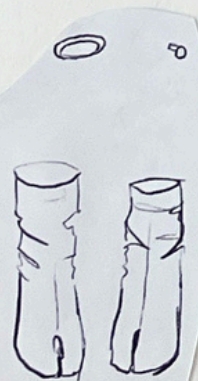




STYLING

emphasizes her
by the length of
the shirt
→ covers up a
lot of body

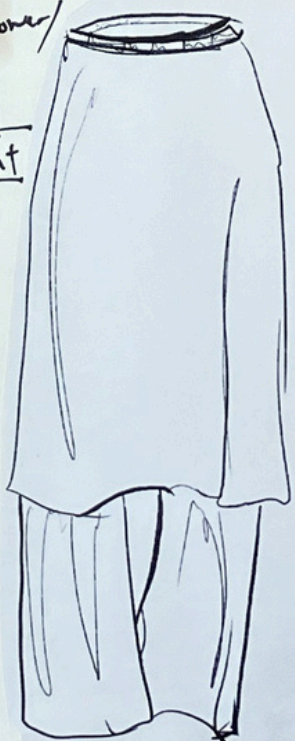
Accessories



Silver

Vy

Also covers up
a lot of
body
visual
weight



key lift
in ankles
if bottom
up

207

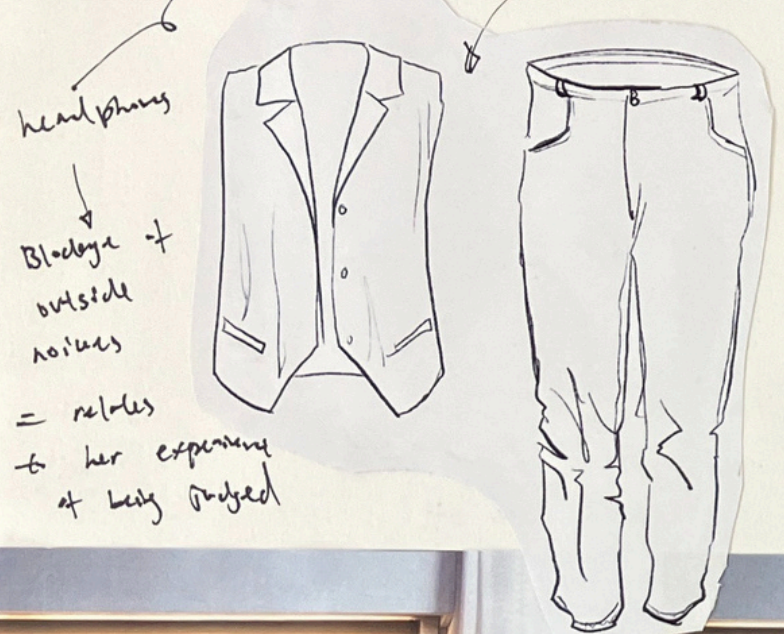
Act of protection

long skirt +
long shirt +
long pants

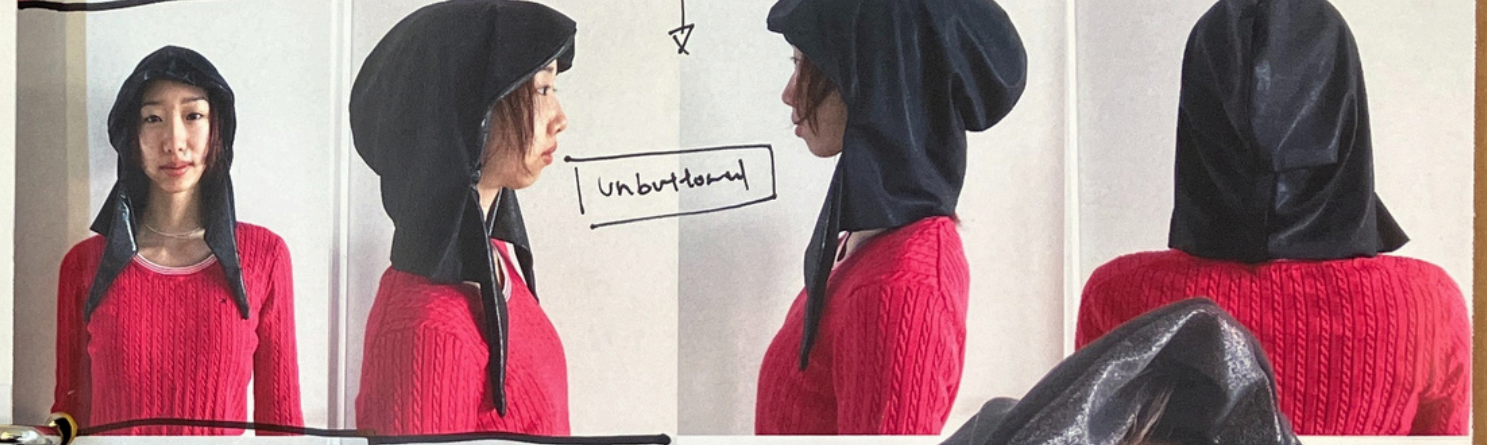
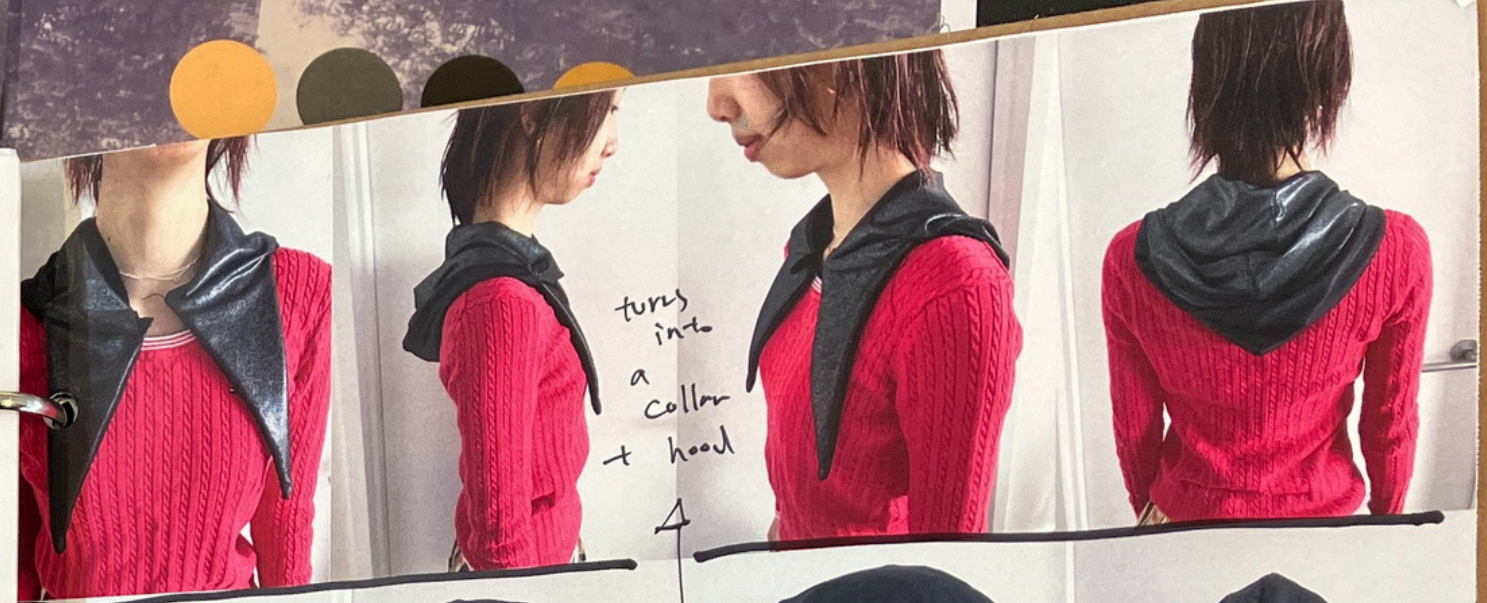
Triple layers



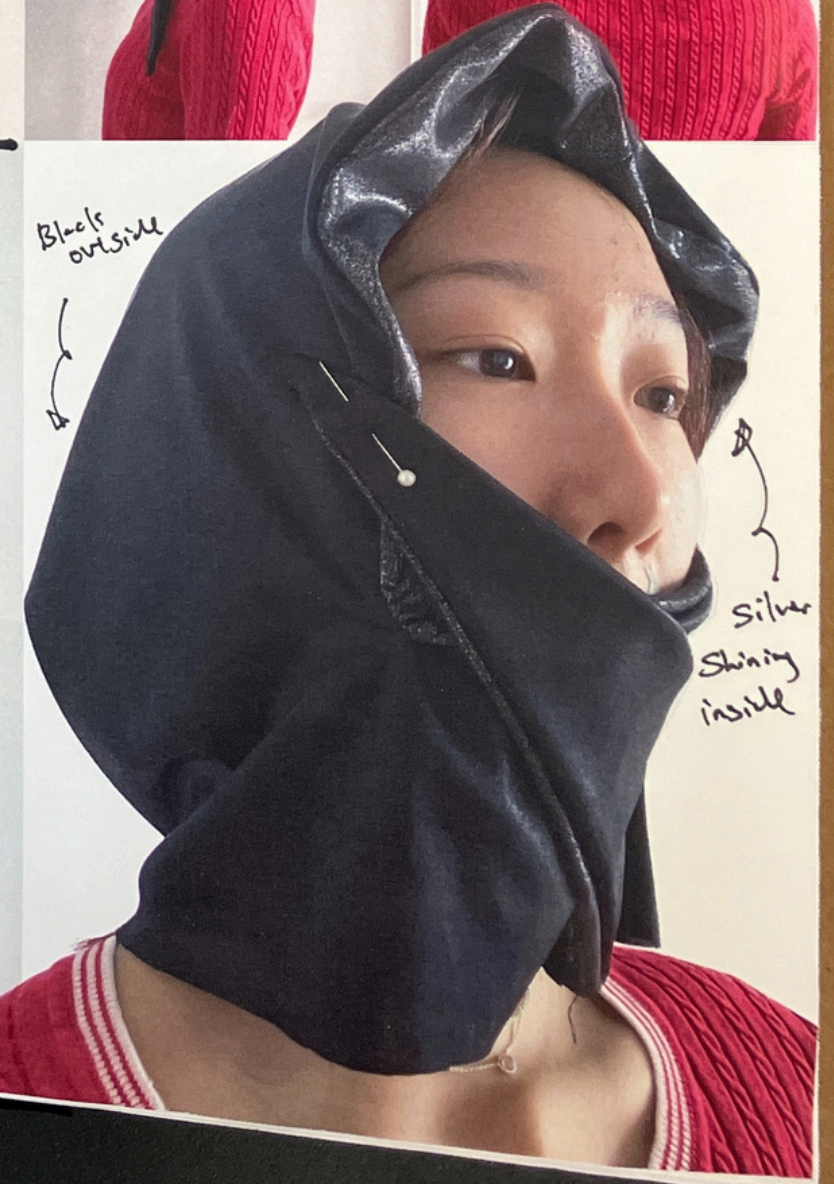
patterned / embroidered
authoritative
formal
Vest
Protection



Same shirt that doesn't allow huge lift



HOOD-MASK







RAGLAN DESIGN AND VARIATIONS

The raglan is a very versatile foundation for a variety of styles. It can be adapted for a variety of necklines (see page 353); and drop shoulder (see page 354).

Armhole Princess

Pattern Plot and Manipulation

Figures 1, 2

Place the raglan pattern on the style line, with X-points touching.

Draw the styleline from X-point to the dart leg. The sleeve can be of any length.

Trace the shaded areas first, side front and back bodice.

Design 1



Design 2

Design 3

Design 4

Design 5

Design 6

Design 7

Design 8

Design 9

Design 10

Design 11

Design 12

Design 13

Design 14

Design 15

Design 16

Design 17

Design 18

Design 19

Design 20

Design 21

Design 22

Design 23

Design 24

Design 25

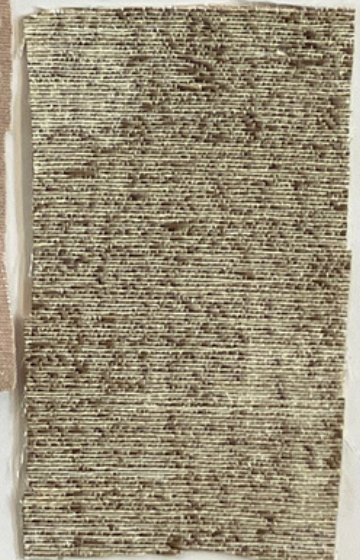
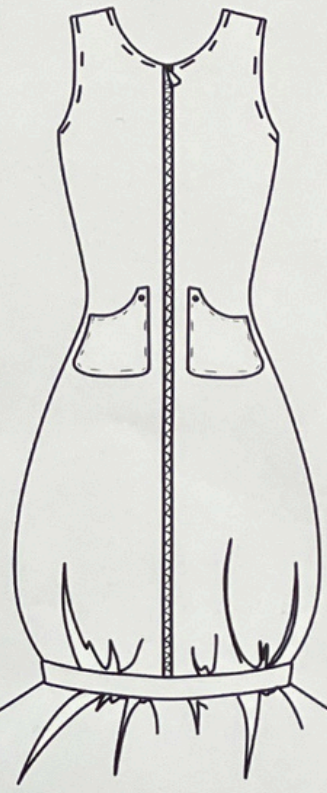
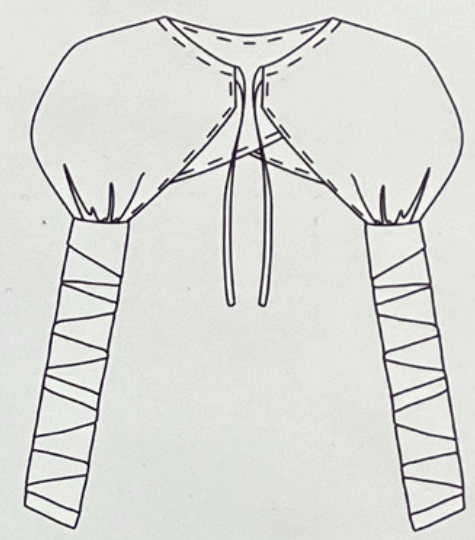
Design 26

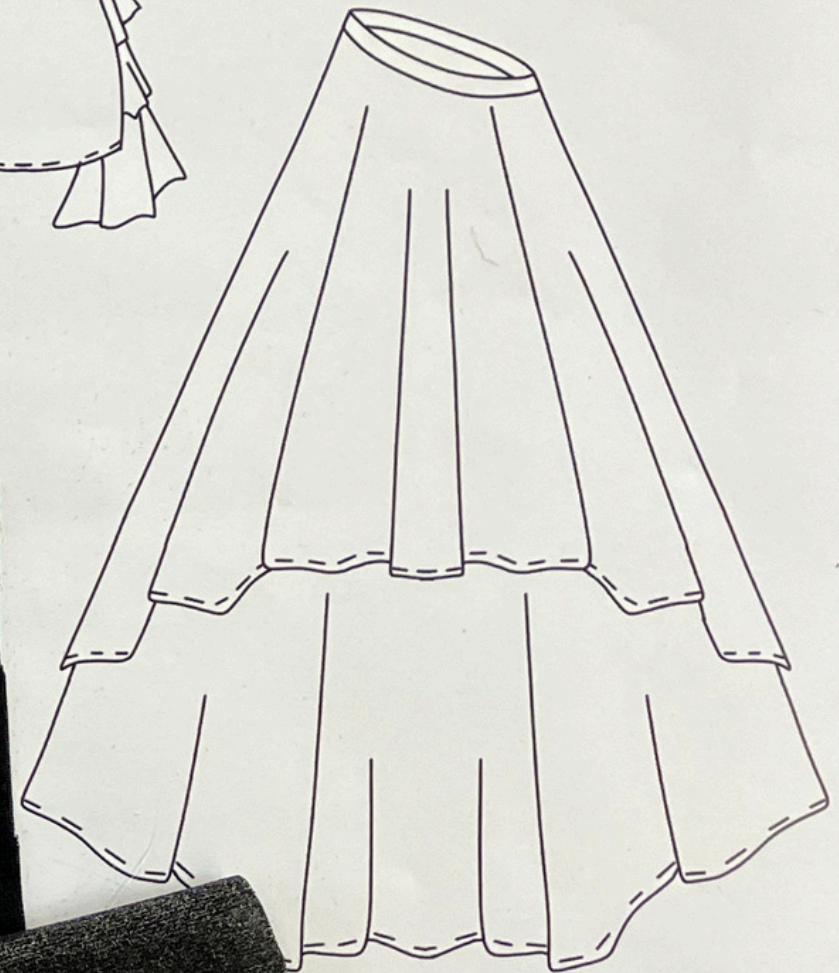
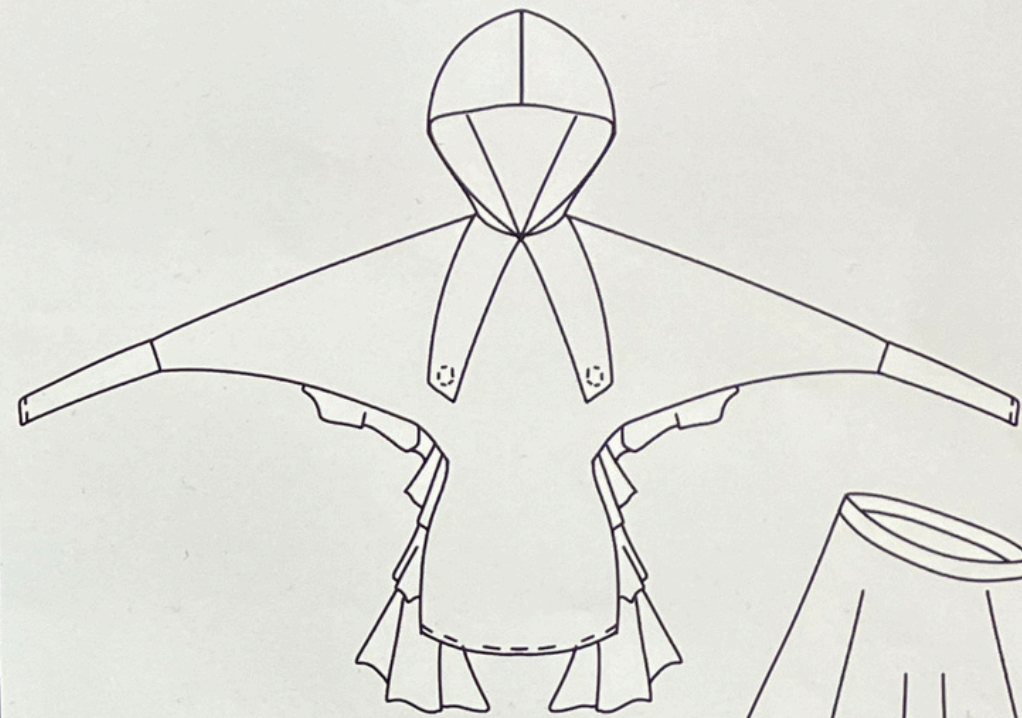
Design 27

Design 28

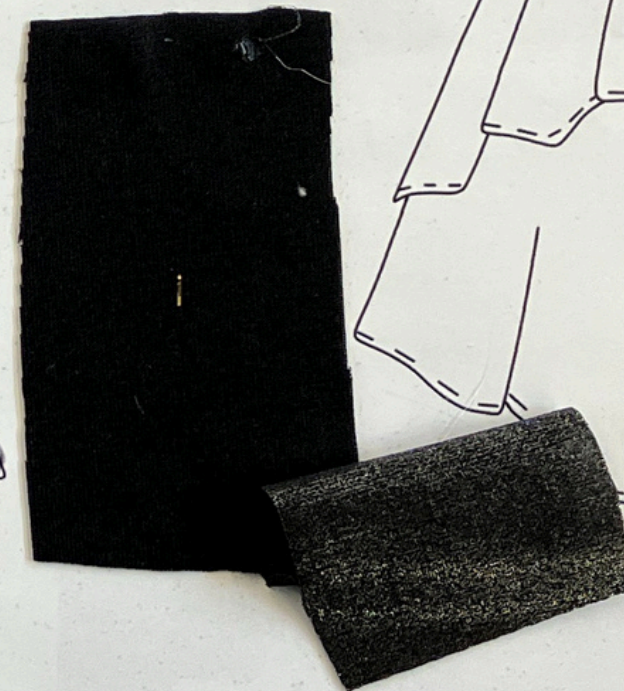
Design 29

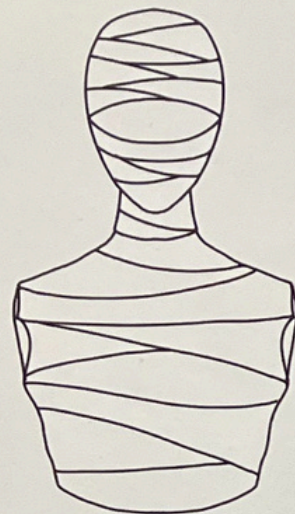
Design 30



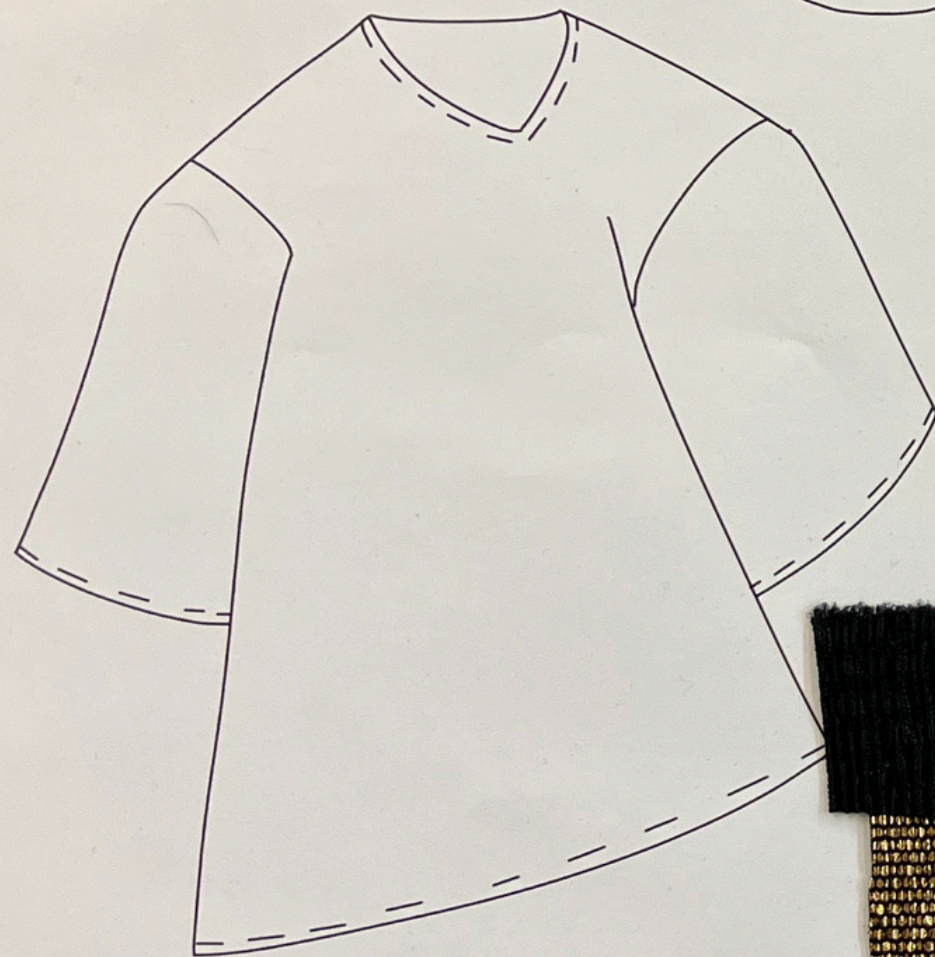


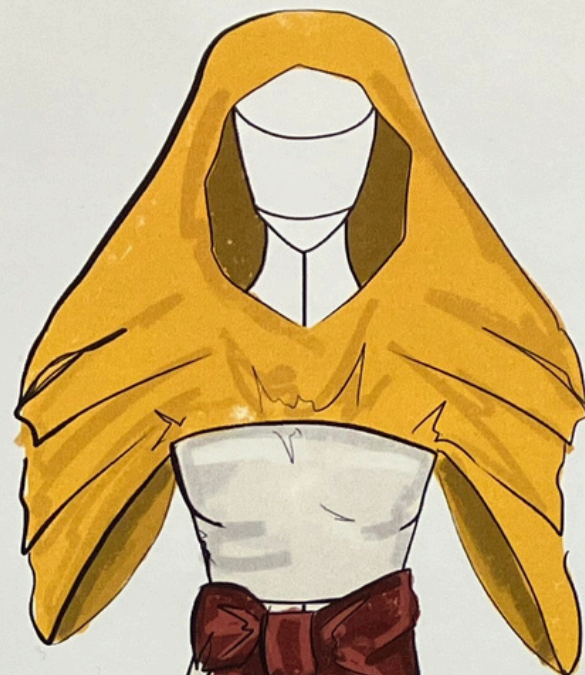
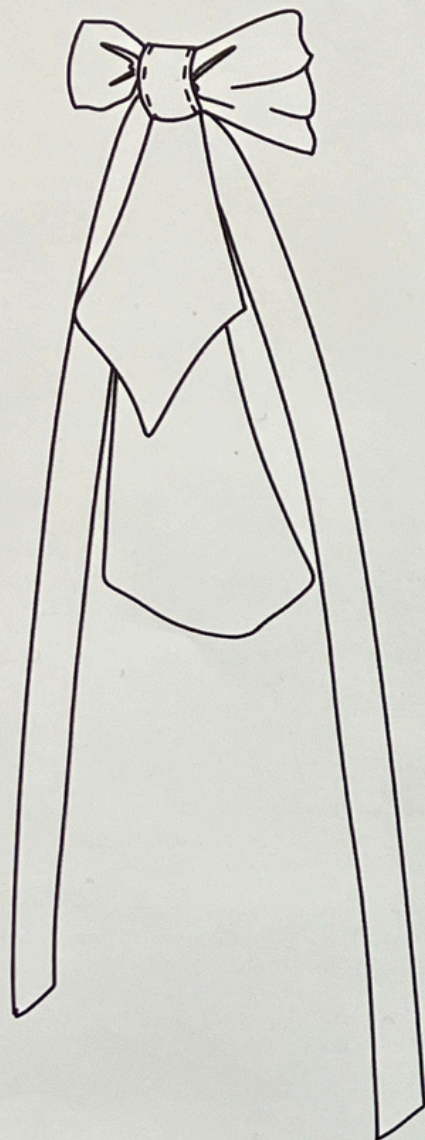
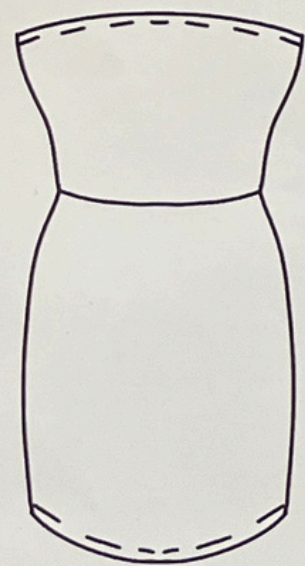
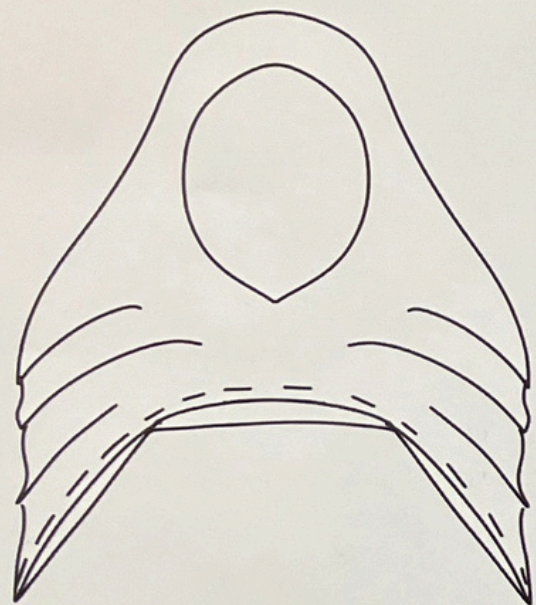
LOOK #3





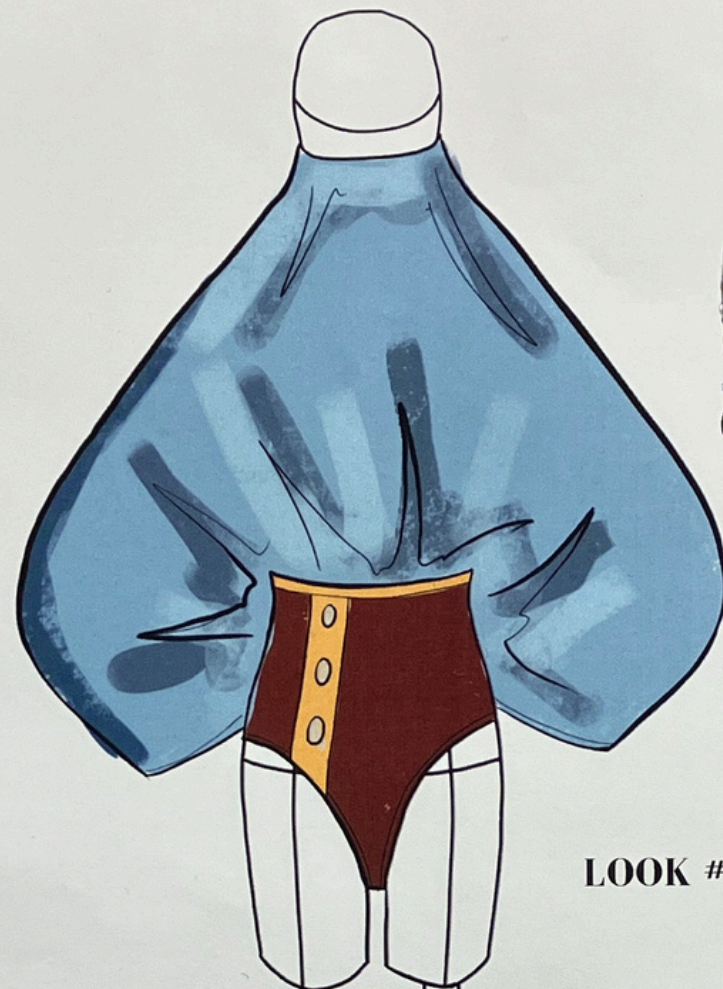
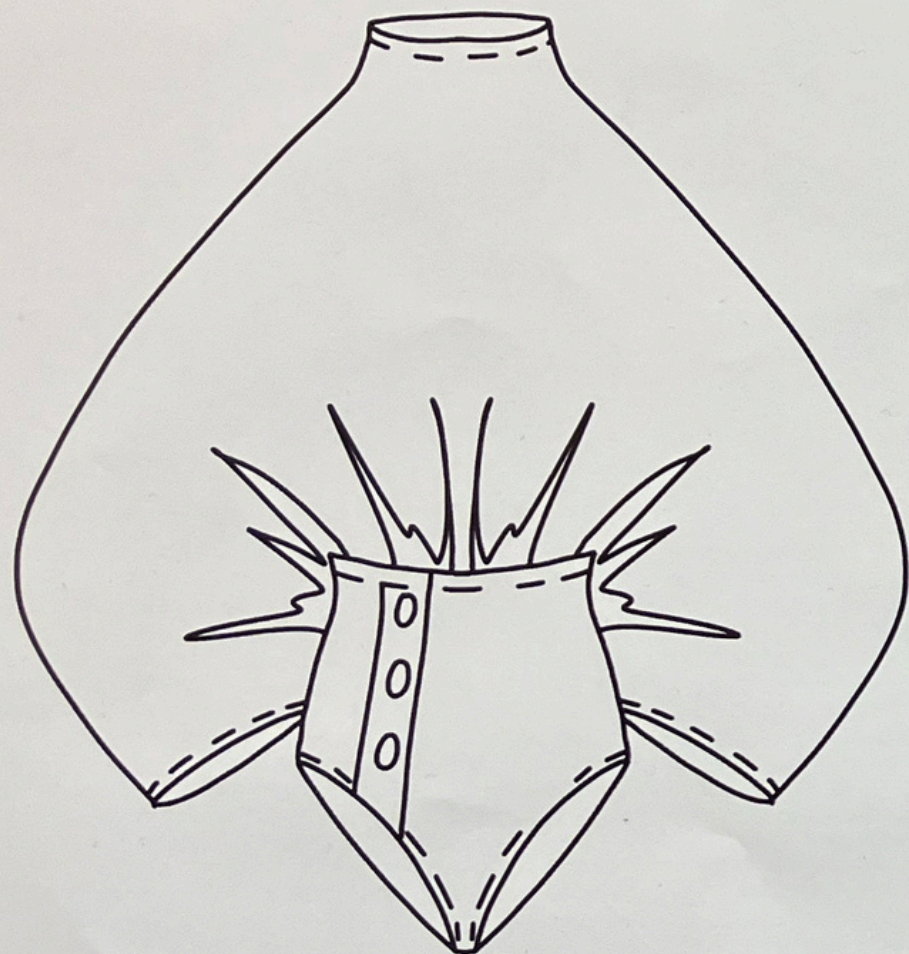
LOOK #4





LOOK #5





LOOK #8

