

ALICE
AFFRE

photographer & multidisciplinary artist

based in Toulouse,FR
contact@aliceaffre.com

ALICE AFFRE

/pl/ they/1997
based in Toulouse, FR

Multi-disciplinary artist between photography, film direction and installation.

After being graduated in 2020 from ESBA in Brussels, they studied in Ecole de Recherches Graphique in Brussels until 2022.

Exhibited in Europe and U.K, their first short film was selected to the first edition of Post Pxrn Festival in Warsaw in 2022.

Inspired by science fiction, Alice's work use blurred identities as a canvas to create a narrative spectrum through their images.

Alice's work is focused on connections, hybrids and fluidity. Their work constantly evolving creating hybrids, by mixing mediums, through their painted polaroids, manipulated film or vegetalized installations.



CV + CONTACTS

ALICE AFFRE
(they/them)

French multi-disciplinary artist, based in
Toulouse, FR

@voyeurisme_contemporain

contact@aliceaffre.com
www.aliceaffre.com

EDUCATION

2020 - 2022

Ecole de Recherche Graphique (ERG),
Brussels, BE

2017 - 2020

Ecole Supérieure des Beaux-Arts de Nîmes
(ESBAN), FR

FESTIVALS & SCREENINGS

2022

- ▶ Festip', projection film, Toulouse, FR
- ▶ Bodies, Arts, Society", Post Pxrn Film Festival Warsaw, PL

EXHIBITIONS

2024

- ▶ Festip', 2nd edition, Toulouse, FR

2023

- ▶ Nikon "Absence" Hotel Plaza - Paris, FR

2022

- ▶ The Unseen, Quantus Gallery - London, UK
- ▶ «Work in Progress», The Auxiliary - Middlesbrough, UK
- ▶ "Care", Festival Garces, Agent Troublant - Marseille, FR

2021

- ▶ Elpis Nexus, with Haolin Huang, ULB - Brussels, BE
- ▶ Garces Festival, Agent Troublant - Marseille, FR
- ▶ Blink Berlin, Virtual Exhibition Darkroom - Berlin, DE

2020

- ▶ "Il va neiger à Capharnahüm", Maison consulaire - Mende, FR
- ▶ «Rencontre avec l'échec heureux», Université Lumière - Lyon, FR

2019

- ▶ "Alien", Rencontres Critiques, Hotel Rivet - Nîmes, FR

PUBLICATIONS

2024

- ▶ Pantaprismx, 1st edition
- ▶ Collaboration Edition X ????

2023

- ▶ Photodarium 2025 Edition
- ▶ Fisheye "Les bals masqués d'Alice Affre : «portraits sublissants»
- ▶ Fisheye Sélection Instagram #345

2022

- ▶ Grouma Mag, 5ème numéro
- ▶ Amours Queers #1

2021

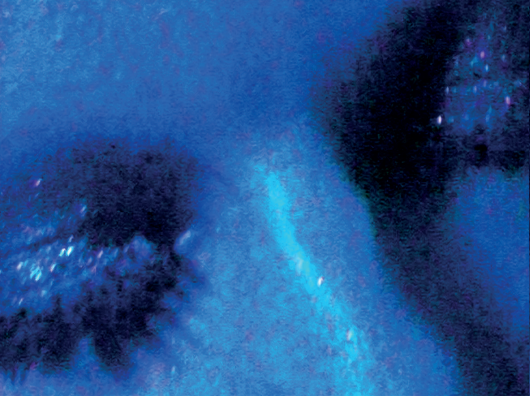
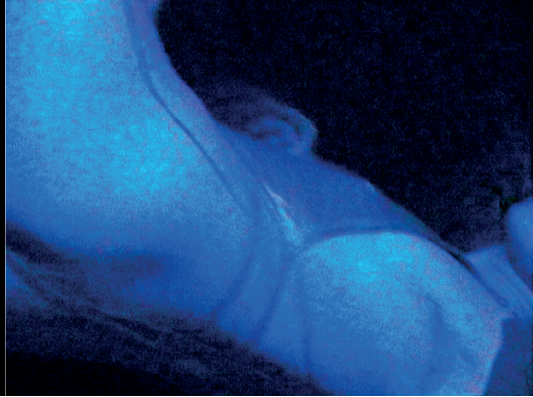
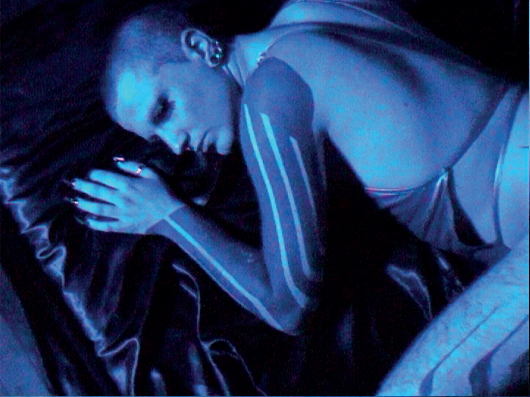
- ▶ VOID Magazine "Junk mail" #2
- ▶ FStop Magazine #Self-Portrait
- ▶ Aeonian Magazine #3

2020

- ▶ Collectif Karbone «Parasite»
- ▶ Polysème «Sexualité.s»
- ▶ Dans ta gueule «Quelles représentations de la sexualité dans le porno?»
- ▶ Latent Magazine n.17
- ▶ Alter Analog Interview

2019

- ▶ Collectif Karbone «Aube»
- ▶ Argentik Mag «Light» #7

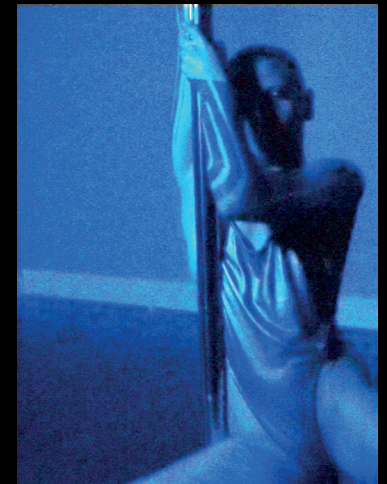
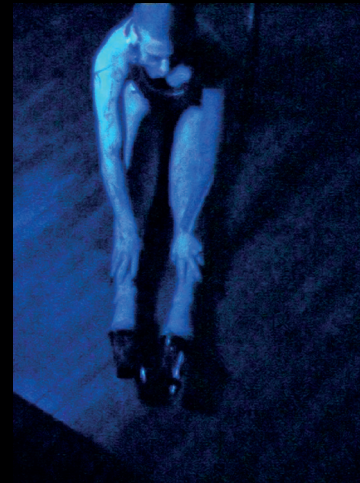




«EMO PLEASERS»

VHS, ft. @opie.utopix

Exhibited in Toulouse, this serie capture the loneliness feeling that Elix can feel in their appartement. A contemplation of their own thoughts, between laying on the sheets and dancing on the pole.



ECLIPSE

digital photography
Brussels, 2023

model_ Haolin Huang
stylist_ Eleonore Avrilleau
assistant_ Louise Luca









Jade
Brussels, june 2023



OUT OF THE CLOSET



LAYERS: DONE (down)



Exhibition «ELPIS NEXUS» realised in Brussel at ULB in 2021 with Haolin Huang.

Layers:done(down) is a mixed media installation.

Three pictures are floating over each other, the water destroy it and create an unique superposition. The water infuse the ink and the color change to pinkish tones.

The rectangular shape of the tiny pool frame the image and create a form of funeral. Picture on the floor, viewers standing in front of it and staring at the installation like funeral.

Three plants are behind the infused images, two Alocasias and one monstera reinforcing the idea of an altar. Alocasias are known to be tropical plants who goes through period of «dormancy» when their environment don't match with their needs. (typically during winter and lower temperatures) stopping they growth to preserve their energy.

This state of dormancy match with the

attitude of the model, between sleeping and awake. is quite similar to the painting «Ophelia» .

Thee images was chosed to talk about coming out, and let emerge them through layers.

Layers;done(down) talk about coming out that take time to emmerge, due to complicated environment and funeral of ourself who need to accept the new version of ourself invisible / visible



