

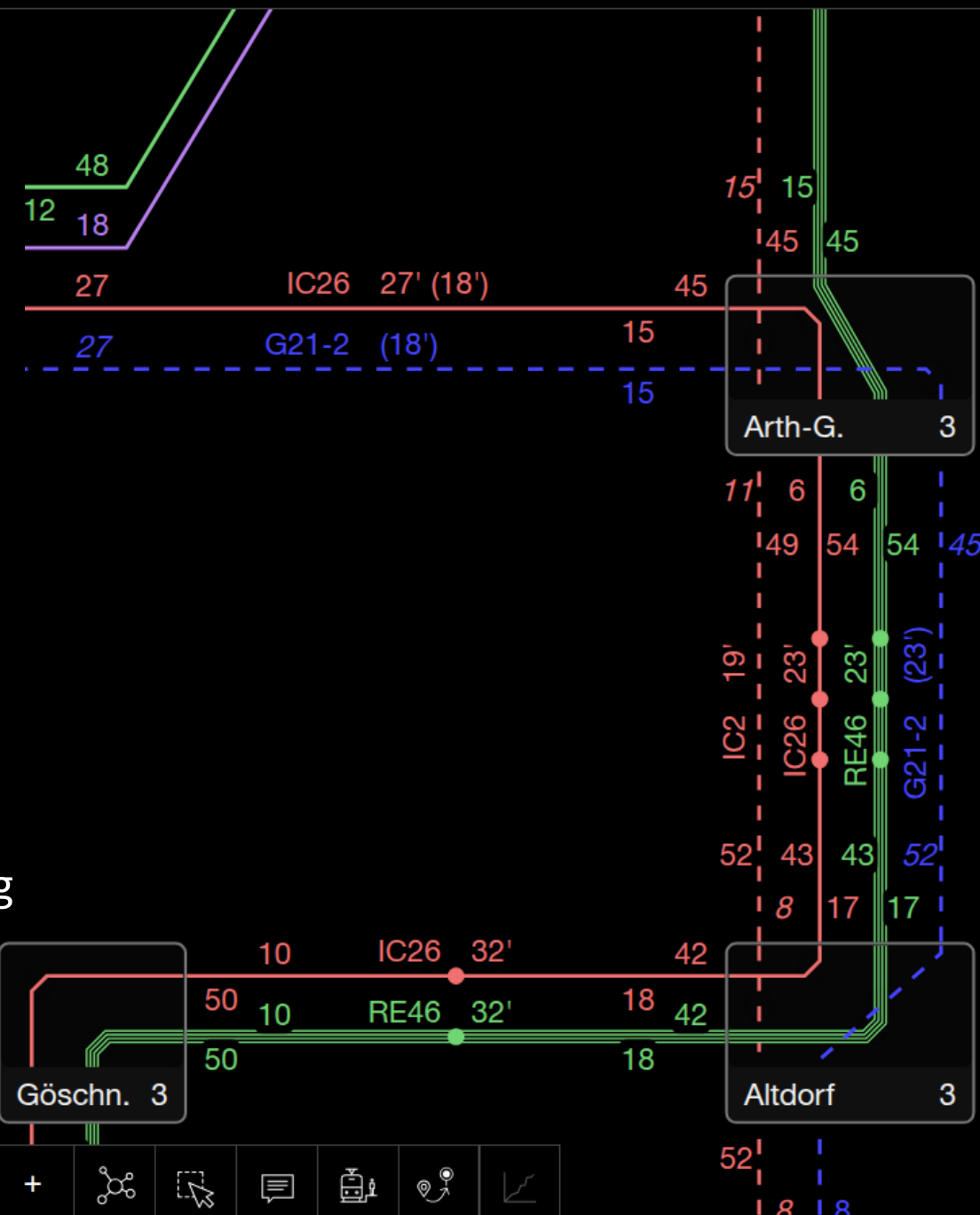
# Netzgrafik -Editor

Designed to make better decisions.

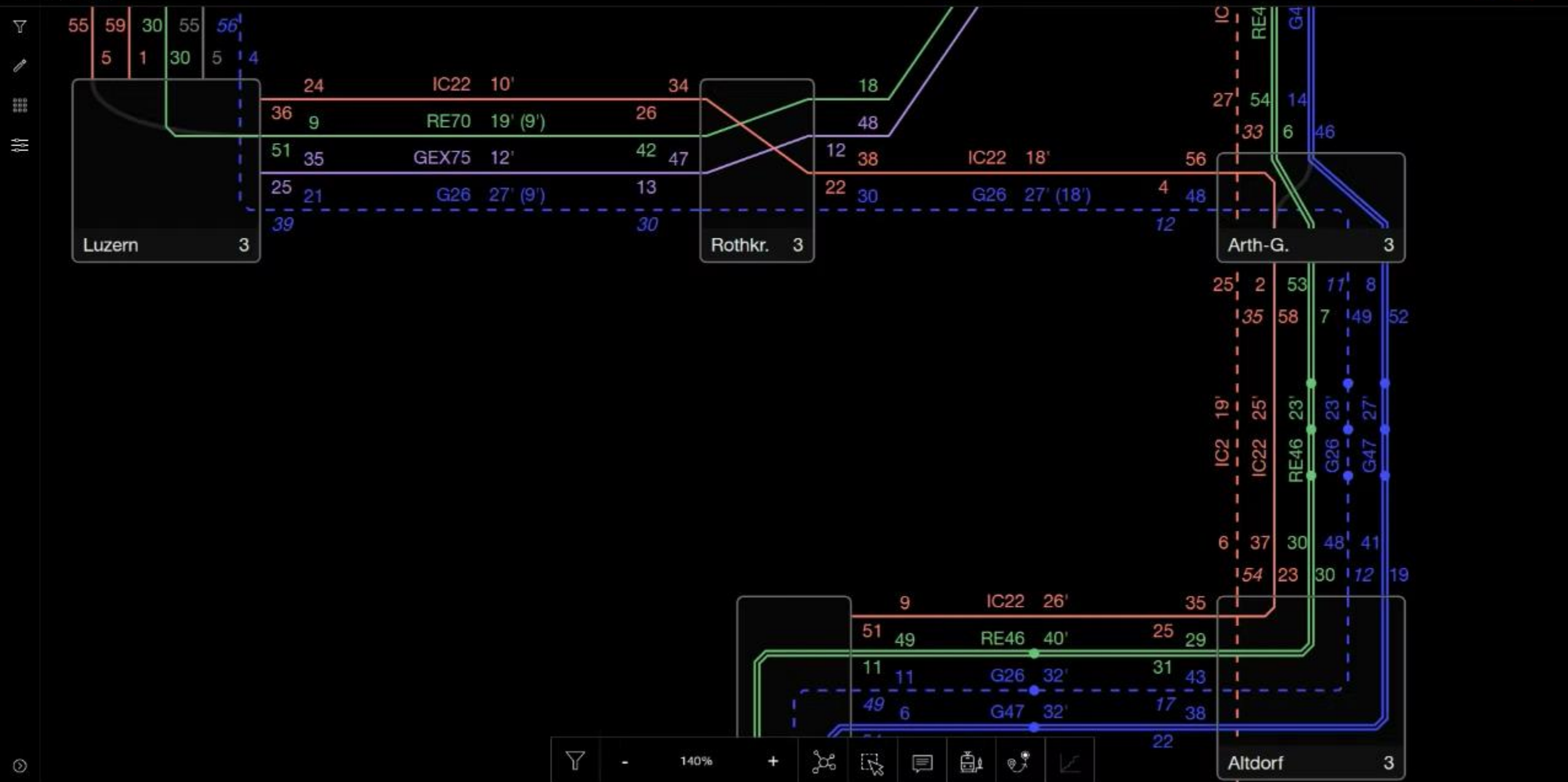
# Netzgrafik-Editor

is a powerful intuitive tool  
to design and create periodic timetables  
efficiently and easily.

- applicable across different industries  
(train, bus, plane)
- scales with your use-case:  
from hobbyist timetabling to professional planning









- Gesamtkosten
- Reisezeit
- Umstiege

	Lausanne	Bern	Olten	Basel	Zürich	Bellinz.	St. Gallen	Luzern	Chur	Zug	Lugano	Locarno	Gent	Gent +	Fribourg
Lausanne		88	105	135	112	243	208	137	215	147	259	278	35	45	44
Bern	88		28	58	43	164	124	61	144	78	180	199	108	118	22
Olten	105	28		25	36	132	102	35	127	63	148	167	123	134	59
Basel	135	58	25		54	158	121	62	136	88	175	194	167	178	89
Zürich	112	43	36	54		97	59	41	75	21	113	132	152	162	66
Bellinz.	243	164	132	158	97		168	87	189	72	14	23	272	283	193
St. Gallen	208	124	102	121	59	168		118	84	96	185	204	227	238	158
Luzern	137	61	35	62	41	87	118		133	19	103	122	175	186	87
Chur	215	144	127	136	75	188	84	133		110	205	224	252	263	188
Zug	147	78	63	88	21	72	96	19	110		88	107	187	197	101
Lugano	259	180	148	175	113	14	185	103	205	88		45	288	299	208
Locarno	278	199	167	194	132	23	204	122	224	107	45		307	318	228
Gent	35	108	123	167	152	272	227	175	252	187	288	307		7	84
Gent +	45	118	134	178	162	283	238	186	263	197	299	318	7		94
Fribourg	44	22	59	89	66	193	158	87	188	101	208	228	84	94	

☒ Gesamtkosten ☐ Reisezeit ☐ Umstiege



-

100%

+



## Flexible level of detail

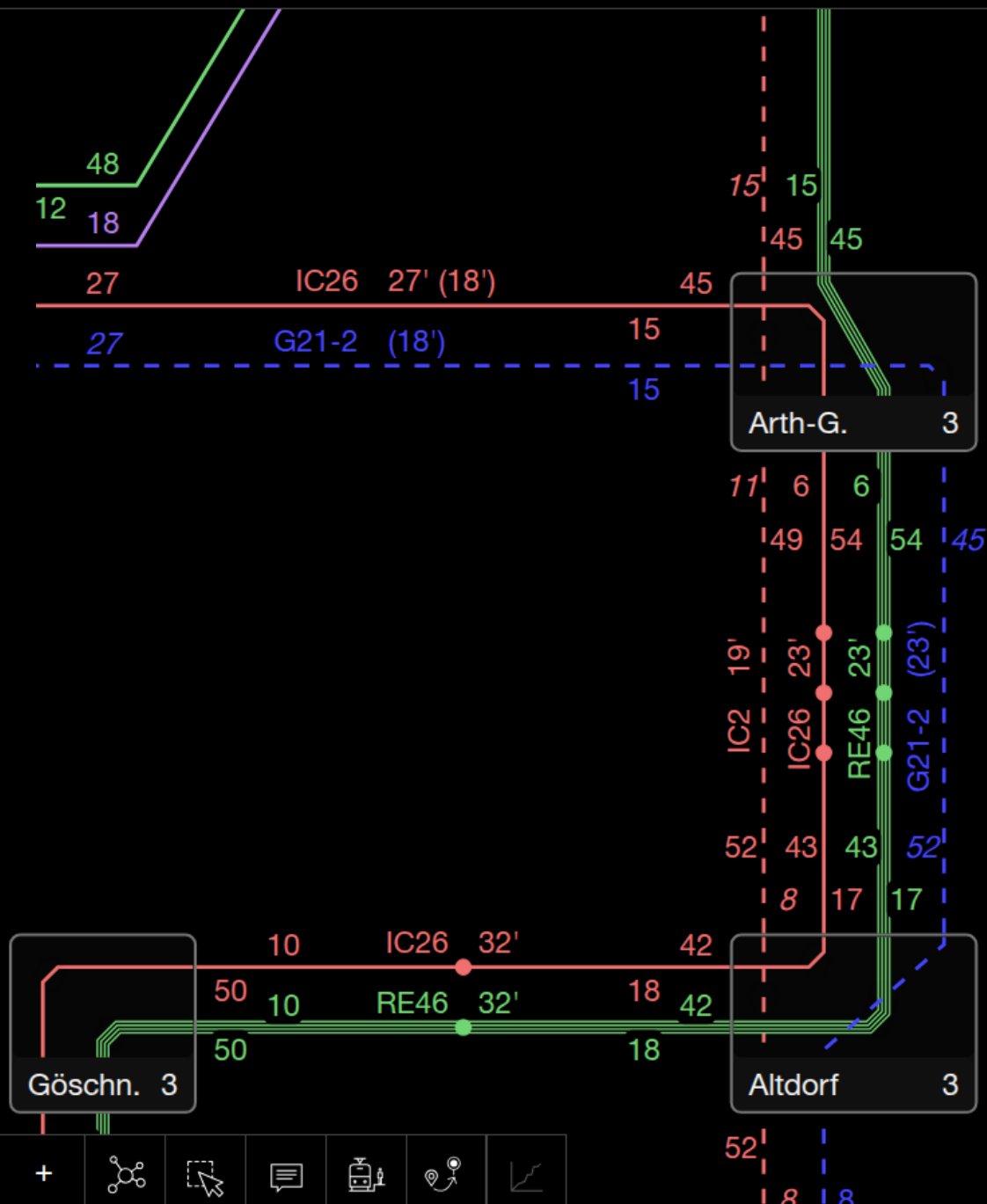
start with a rough sketch, continuously add more detail

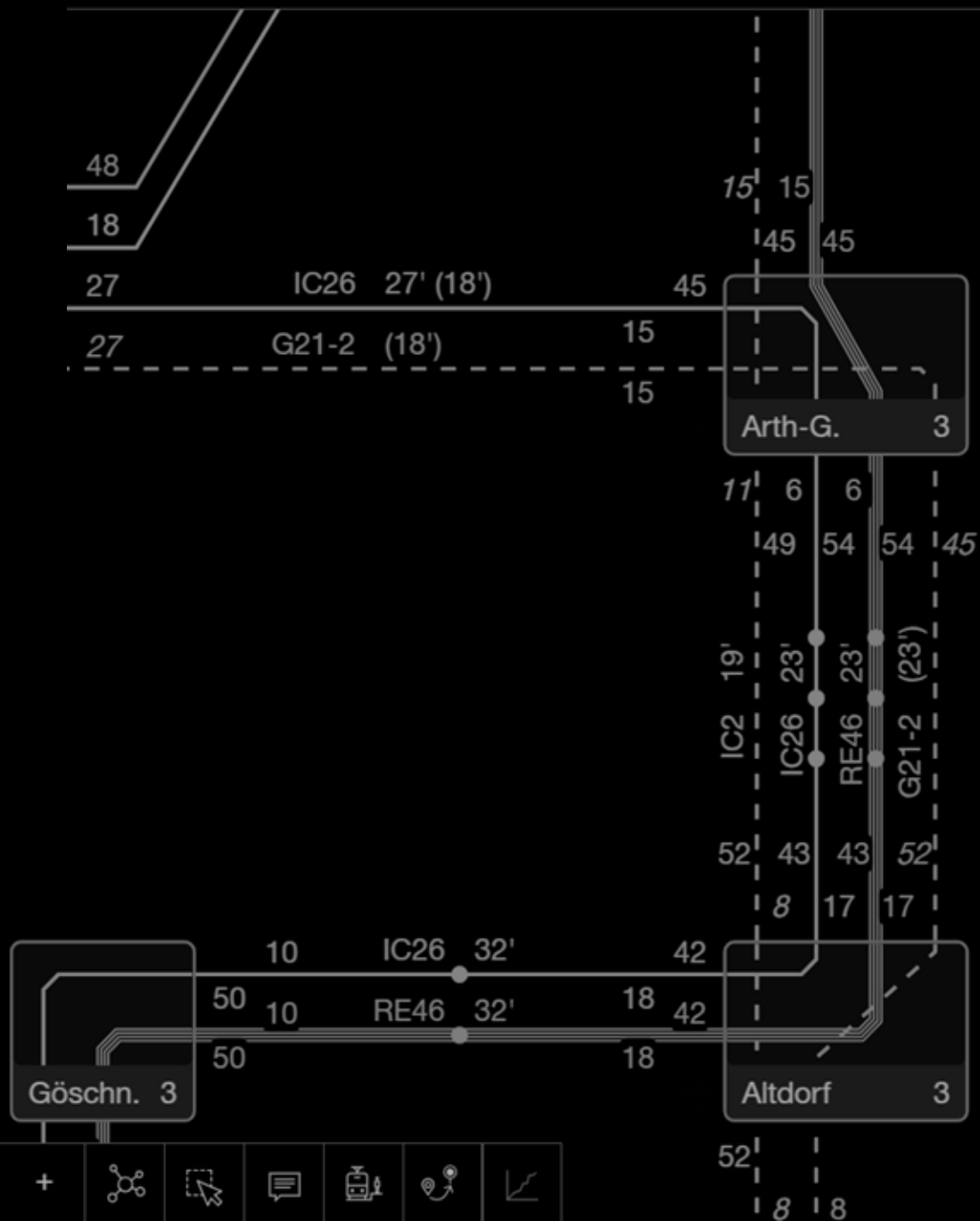
## Human-centric

user involvement is the key  
with our users we developed a novel approach for interactive timetable planning

## Excellent and intuitive UX

so easy and natural as drawing on a whiteboard  
no training required





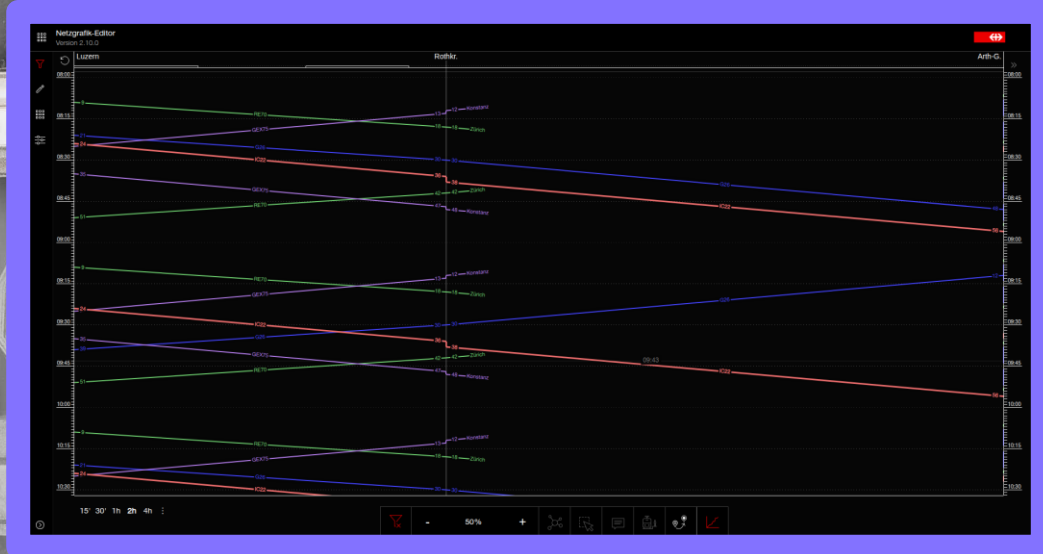
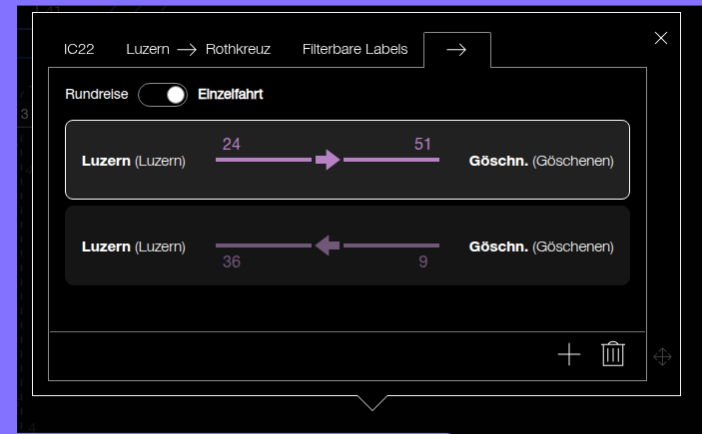


# Netzgrafik-Editor

## Version 2.10

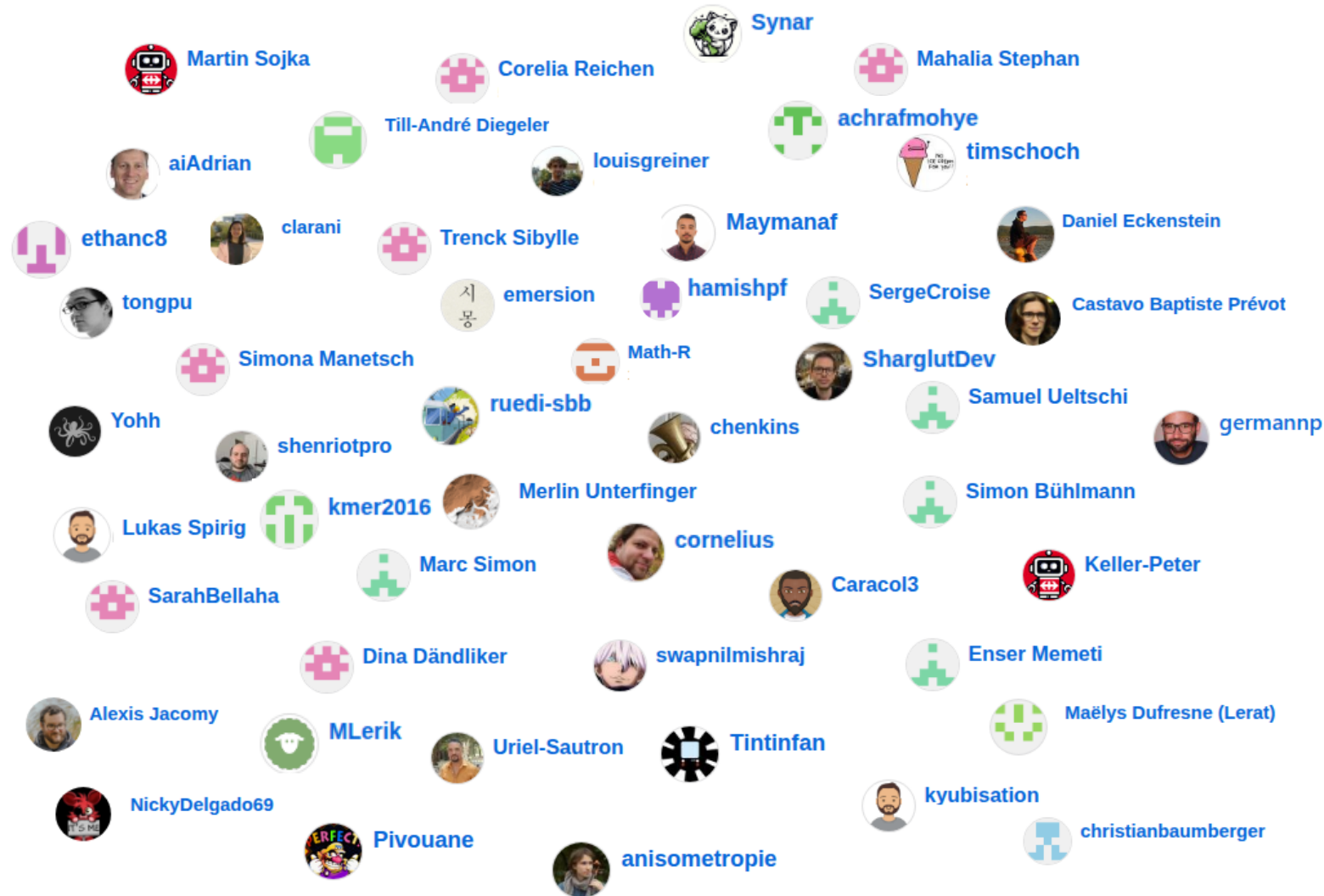
*Highlighted New Features*  
*Origin-Destination-Matrix*  
*One-Way train runs*

	Lausanne	Bern	Olten	Basel	Zürich	Bellinz.	St. Gallen	Luzern	Chur	Zug	Lugano	Locarno	Gent	Gent	Fribourg
Lausanne		68	105	135	112	270	208	137	228	162	286	320	35	45	44
Bern	68		28	58	43	201	124	61	144	91	217	251	108	118	22
Olten	105	28		25	36	183	102	35	127	63	189	233	123	134	59
Basel	135	58	25		54	216	121	62	136	88	232	266	167	178	89
Zürich	112	43	36	54		132	59	41	75	21	148	182	152	162	66
Bellinz.	270	201	183	216	132		224	132	215	84	14	23	310	320	224
St. Gallen	208	124	102	121	59	224		118	84	96	240	274	227	238	158
Luzern	137	61	35	62	41	132	118		133	19	148	182	175	186	87
Chur	228	144	127	136	75	215	84	133		110	231	265	252	263	178
Zug	162	91	63	88	21	84	96	19	110		100	134	199	210	116
Lugano	286	217	199	232	148	14	240	148	231	100		60	326	336	240
Locarno	320	251	233	266	182	23	274	182	265	134	60		360	370	274
Gent	35	108	123	167	152	310	227	175	252	199	326	360		7	84
Gent	45	118	134	178	162	320	238	186	263	210	336	370	7		94
Fribourg	44	22	59	89	66	224	158	87	178	116	240	274	84	94	





# Thank you to all contributors - you make the project alive!



Surely we've missed someone along the way, and we want to extend our gratitude to them as well.

# Why it's worth taking the path with Open Source.

Lessons Learned from the  
Netzgrafik-Editor.

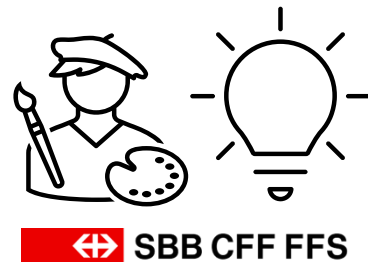


# The classical situation in our Industry.



**Market too small - no off-the-shelf solution available.**

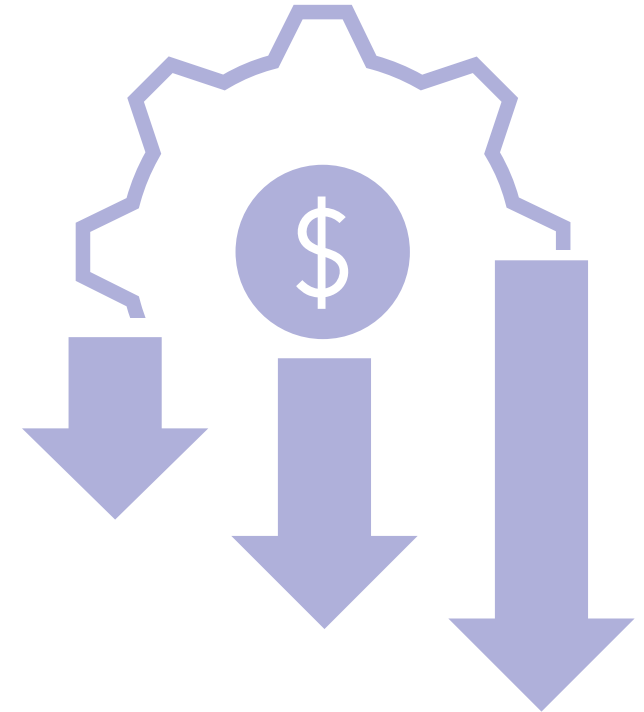
**I want a Netzgrafik-Editor.**



# The Typical Outcome.



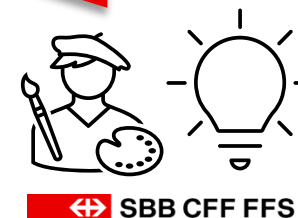
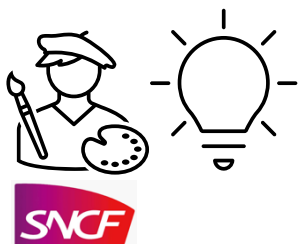
- **Redundant effort** - same problem solved again and again.
- **Every solution looks different** - no standards, no alignment.
- **Lost synergies** - no shared knowledge or perspectives.



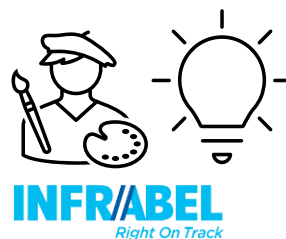
# The Open Source Model.

We are building a **Netzgrafik-Editor**,  
who like to help?

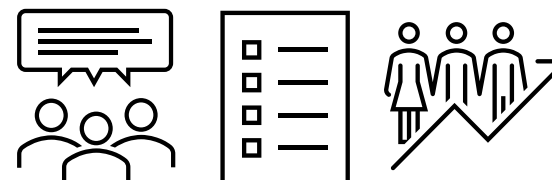
Sounds great, let's do it together!



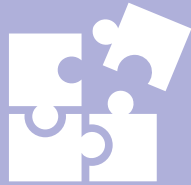
We are also interested – we can  
even contribute concepts and ideas.



Let's develop together



# Our Approach - Open Source & Freely Usable Tools.



Empower and support the Community to lower entry barriers.



Release the entire project as Open Source — with clear documentation and a transparent roadmap.



Provide a fully functional application freely available and ready to use.

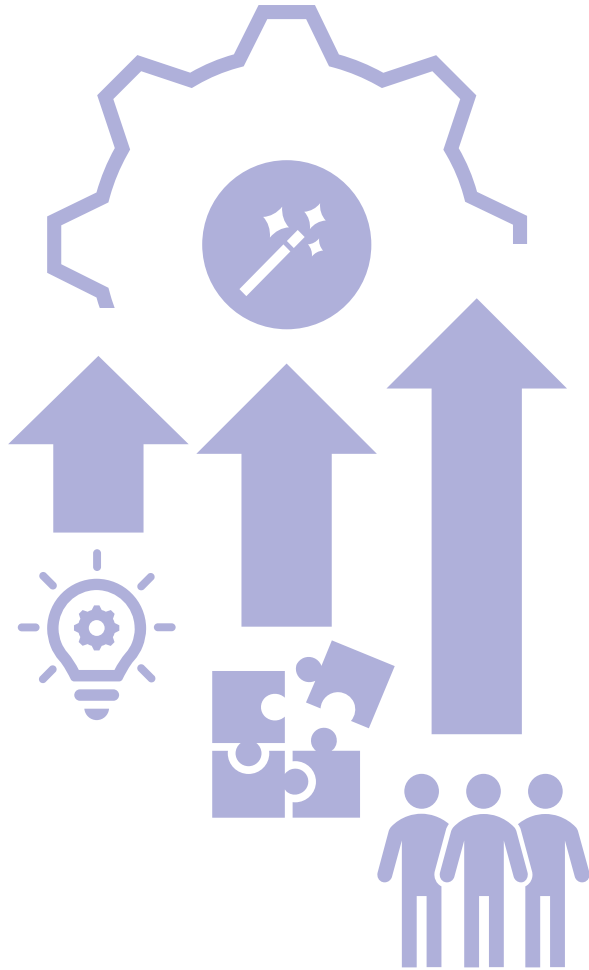
Hosted by Flatland Association  
<https://nge.flatland.cloud>



Forster Sustainable Open Innovation/Source Communities through Networking — driven by Infrastructure & timetable Planners, Railways Companies, Software Developers, and Enthusiasts.



# Open Source Success Factors – Our Experience.

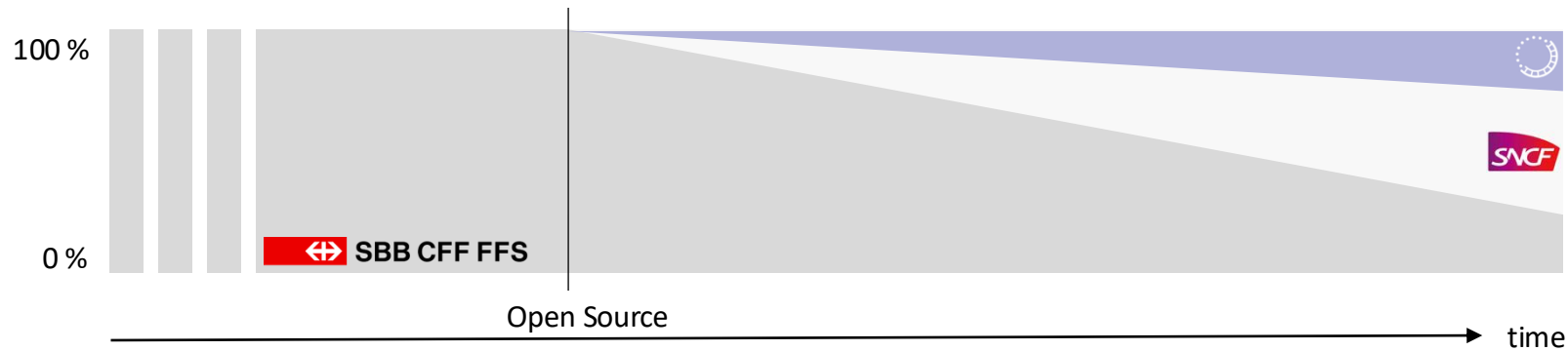


- Fostering an **open and lively community** is key.
- **Transparency** in roadmaps aligns contributors with shared objectives.
- **Motivated contributors** push the project forward – independent of individual budgets.

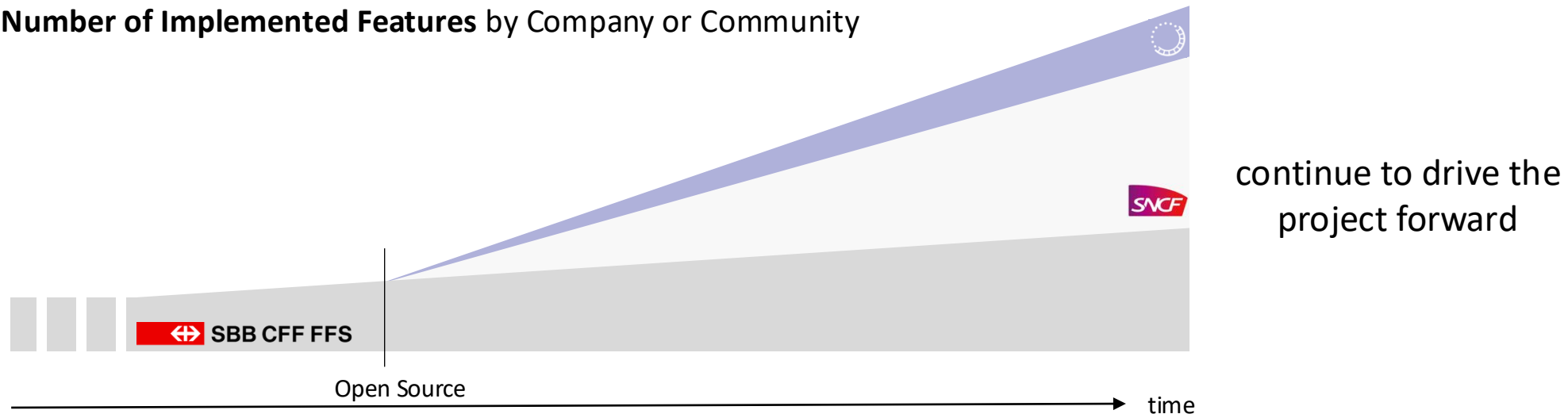
# What we observe in the Netzgrafik-Editor project.



**Percentage of Contributions** (e.g. code, documentation, etc.) by Company or Community



**Number of Implemented Features** by Company or Community



# Accelerating Innovation Through Collaboration.



**Open source** requires active community management, more coordination, and a transparent product roadmap.

*But that's precisely its strength.*



**Collaborative product development** leads to stronger results through diverse perspectives, shared costs, and growing collective knowledge.

*It enables cooperation between the rail industry.*



**Through collaboration** the Netzgrafik - Editor becomes a shared foundation - setting standards and creating a common understanding.

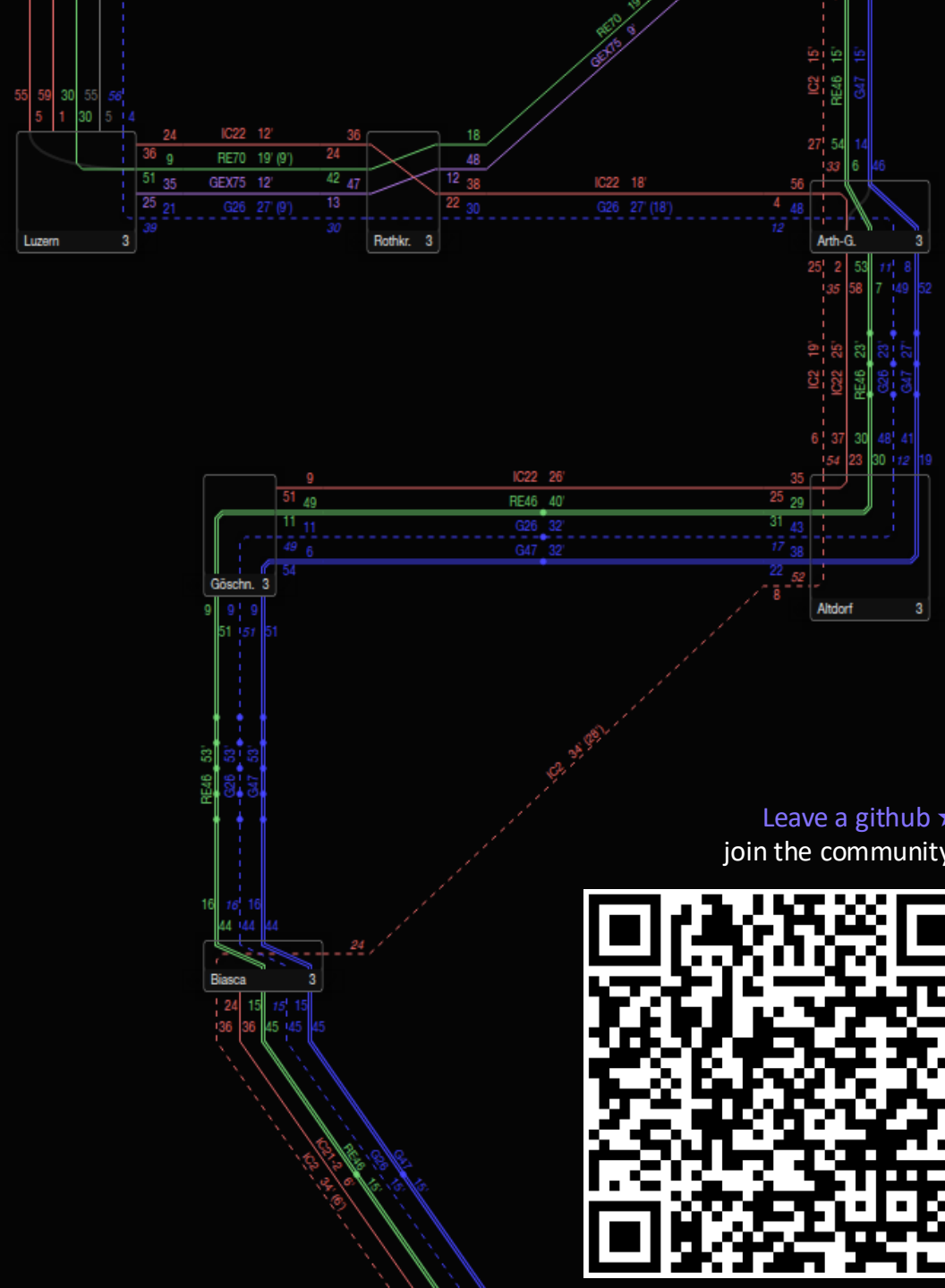
*Forsters and accelerates innovation.*

# Netzgrafik -Editor

Designed to make better decisions.

If you want to go fast, go alone,  
if you want to go far, go together.

African proverb.



Leave a github ★  
join the community!

