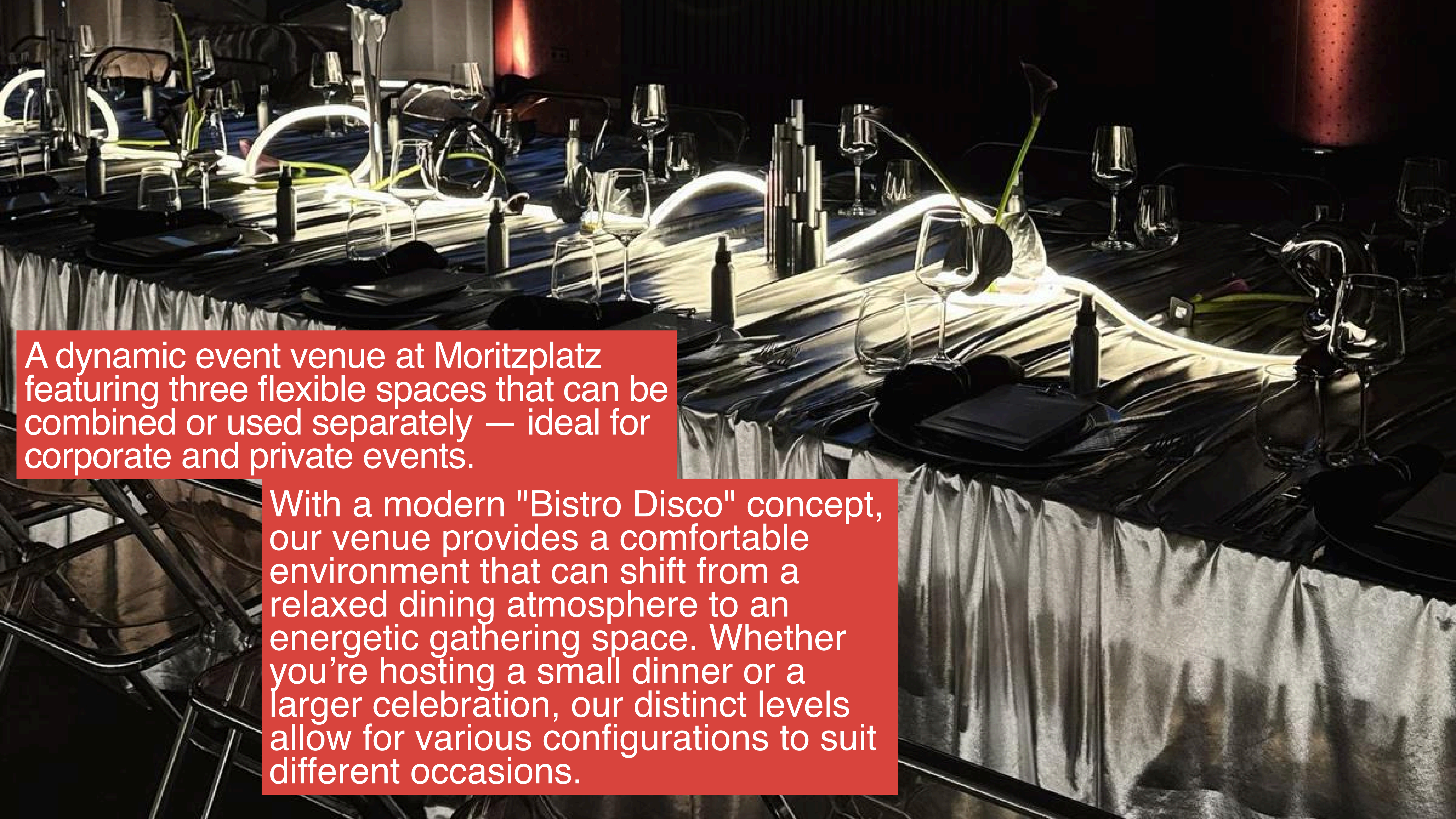


cocoboule

Exposé





A dynamic event venue at Moritzplatz featuring three flexible spaces that can be combined or used separately — ideal for corporate and private events.

With a modern "Bistro Disco" concept, our venue provides a comfortable environment that can shift from a relaxed dining atmosphere to an energetic gathering space. Whether you're hosting a small dinner or a larger celebration, our distinct levels allow for various configurations to suit different occasions.

The Space

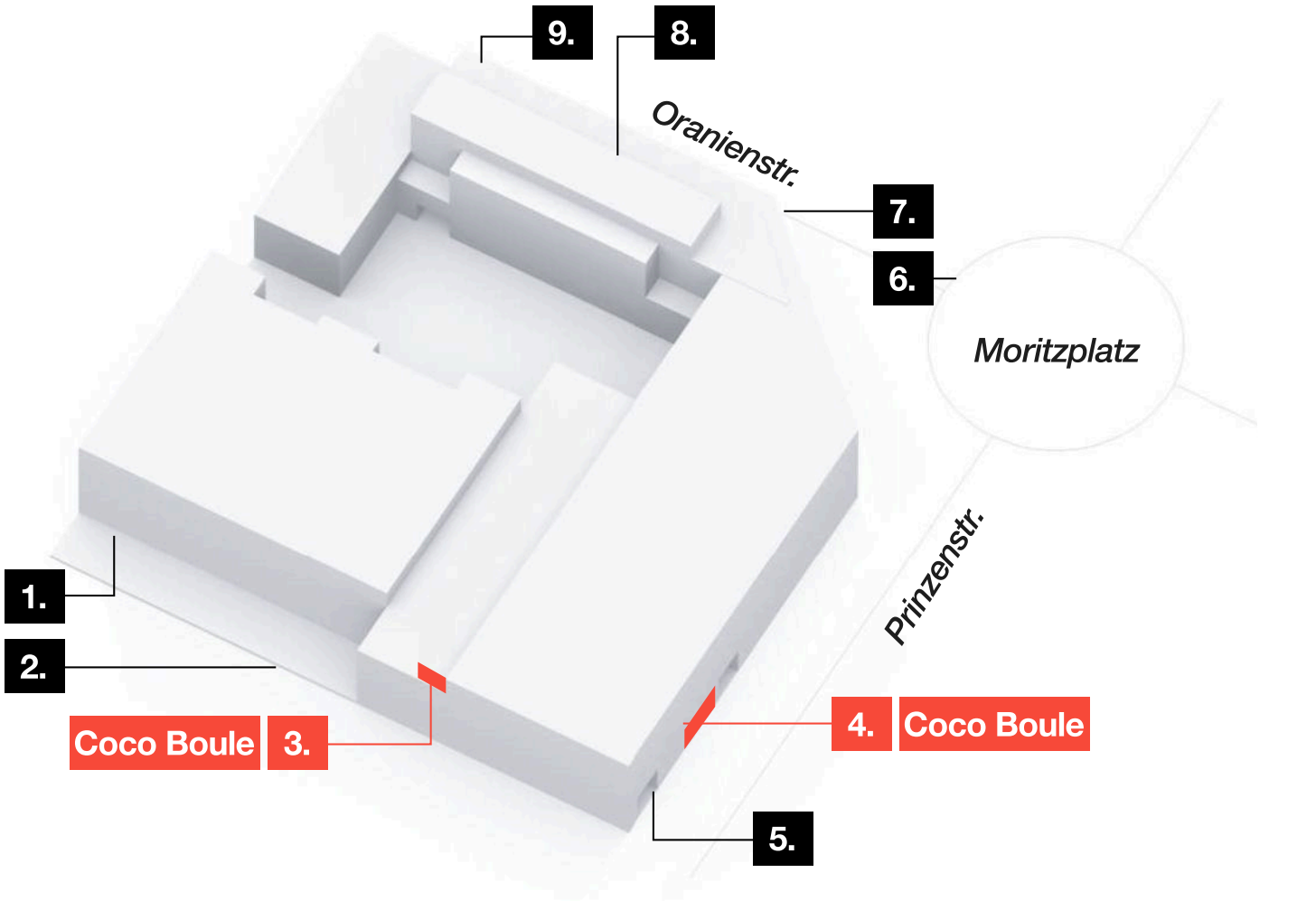
Coco Boule defies a singular definition, by day, it can operate as a light-filled bistro and workspace, and by night it can transform into an event, club or restaurant to host dinner parties, listening sessions or raves. All under the same roof, there are three major architecturally designed rooms and areas that constitute the multi-functional and unique nature of Coco Boule. Enjoy pasta followed by an espresso in the light-filled bistro, host a dinner party or club night in the David Lynch-inspired red room, or enjoy a cocktail party and pizza oven in the elegant blue room.

For a immersive 360 view, and all of site dimensions click [here](#)

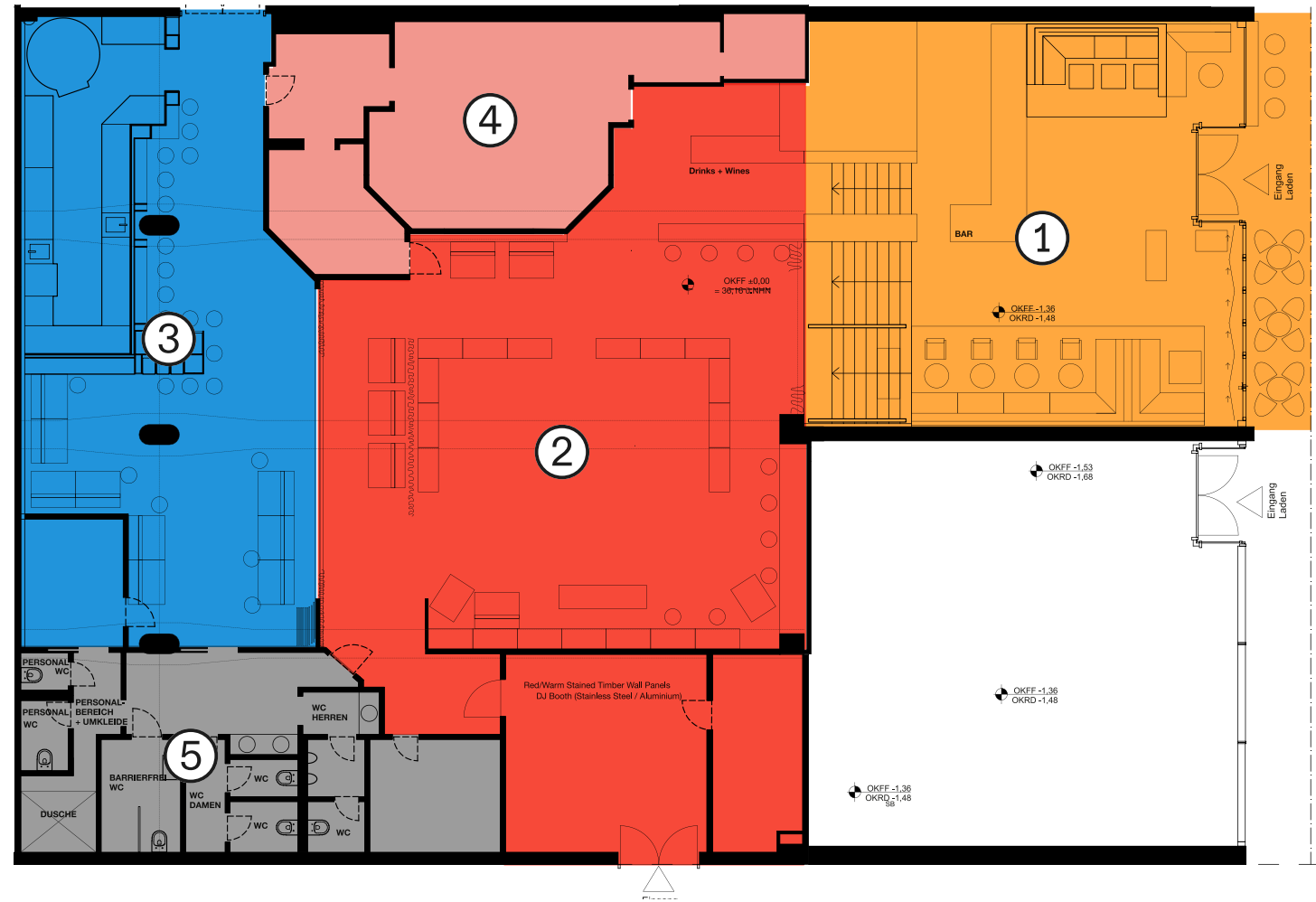
Areas	Indoor: 400 m² Outdoor: 20 m²
Capacities (PAX)	Conference: 120 Get Together/Party: 400 Seated Bistro: 35 Seated Bistro Outside: 15 Seated Red Room: 90 Seated Blue Room: 40 Seated Total: 180
Spaces	Red Room: Dining Hall/Multispace Blue Room: Bar/Kitchen/Multispace Bistro: Bar/Lounge Cafe/Dancefloor
Lights	Erco System Table Lights Standing / Floor lamps Custom LED Perimetral Installation Oversized Disco Ball
Sound	FUNKTION ONE Dance Stack FUNKTION ONE DJ Monitoring Standard DJ Equipment on request

Distance	KM
Airport Berlin	21,4km
Hauptbahnhof	5,3km
Kottbusser tor	0,9km
Hermannplatz	3,3km
Alexanderplatz	2,1km
Brandenburger tor	3,6km
Potsdamer platz	2,8km

Events (private)	Parties: 400 PAX Dinners: 118 PAX
Events (corporate)	brand activation workshops & conferences film & photoshoots dinners & receptions aftershow events
Services	catering service production booking concept & event design
Equipment	Fully equiped professional kitchen
Features	Various seating options (modular seating), bar stools, fixed bar areas, openable accordion doors to street, dining/conference tables and chairs, modular walls for adjustable spatial arrangement



1. Prince Charles
2. Tak
3. Cocoboule Laneway Entrance
4. Coco Boule Street Entrance
5. Laneway Entrance Coco Boule/Prince Charles/Tak
6. Moritzplatz Station
7. Main Entrance Aufbau Haus
8. Atelier
9. Delivery Entrance

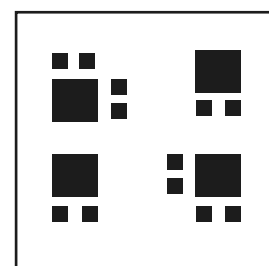


1. Bistro
Area: 127m²
Seated: 35 Guests
Outside Seated: 15 Guests
2. Redroom
Area: 181m²
Seated: 90 Guests
3. Blaurroom
Area: 106m²
Seated: 40 Guests
4. Küche + Lager
Area: 57m²
5. WC + Lager
Area: 53m²

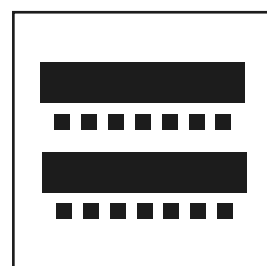
01. Bistro

Areas	Indoor: 107 m ² Outdoor: 20 m ²	Equipment	Fully equipped professional kitchen Various seating options (modular seating), bar stools, fixed bar areas, openable accordion doors to street, dining/conference tables and chairs, modular walls for adjustable spatial arrangement
Capacities (PAX)	Get Together/Party: 86 Seated Inside: 35 Seated Outside: 15	Lights	Erco System Table Lights Standing / Floor lamps
Events (Private)	Parties: 400 PAX	Services	Catering service Production Booking Concept & event design
Events (Corporate)	Brand activation Workshops & conferences Film & photoshoots Aftershow events		

Layouts

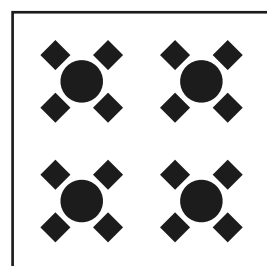
CORPORATE
HIGH TABLES

400 PAX



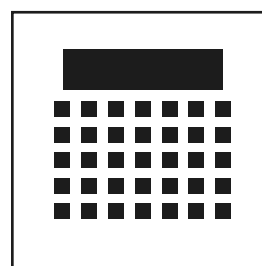
BAR TABLES

TBC



**BISTRO
SEATING**

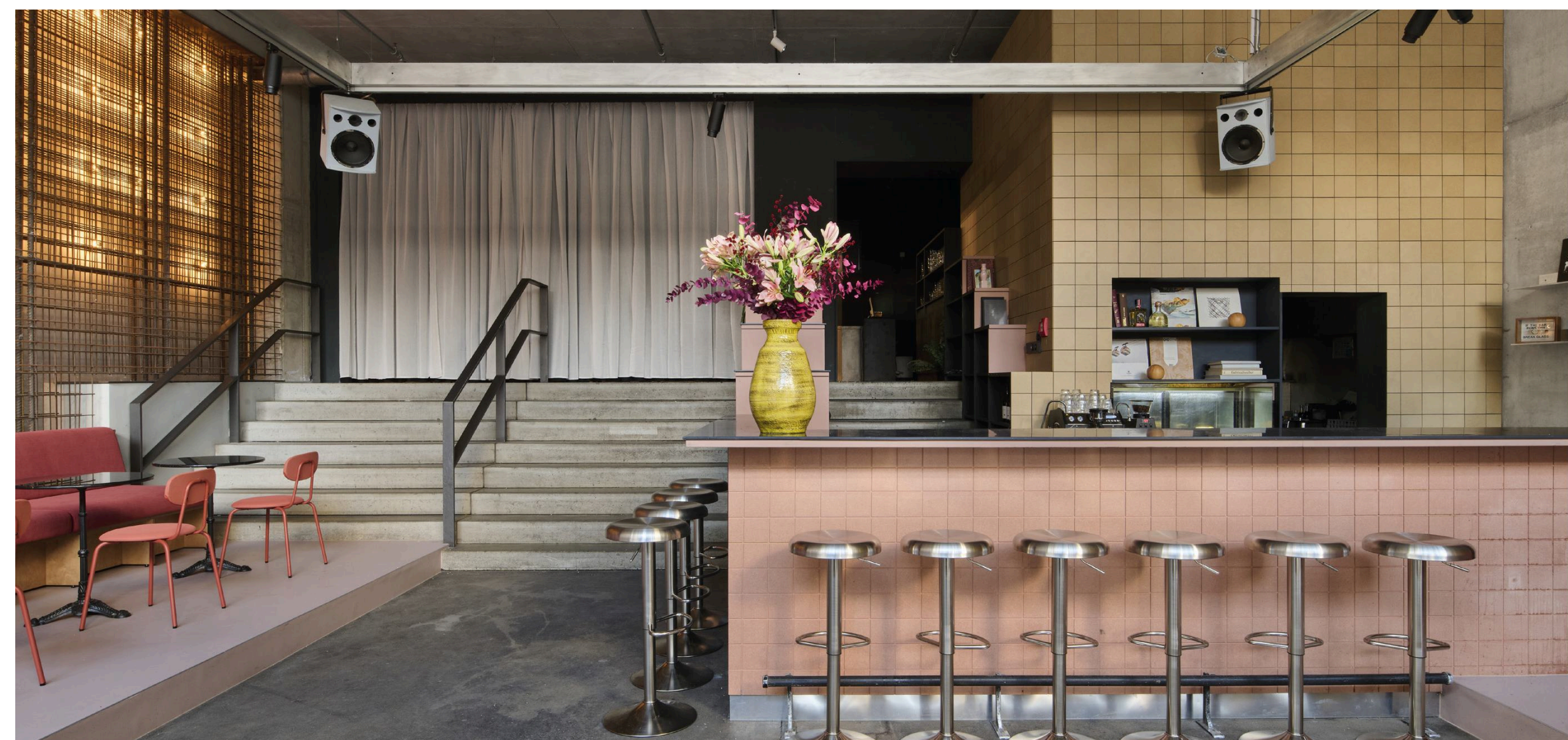
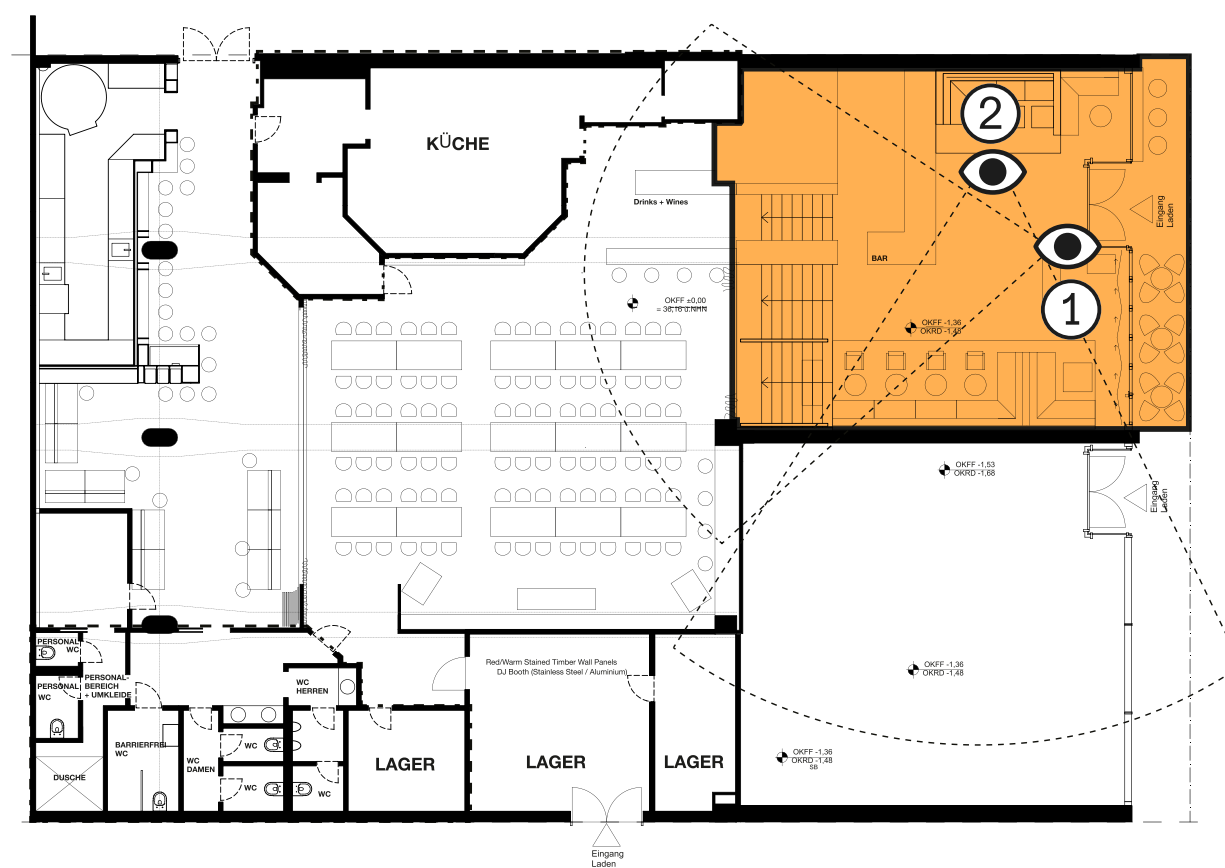
TBC



STAGE AND SEATING

TBC

Floorplan



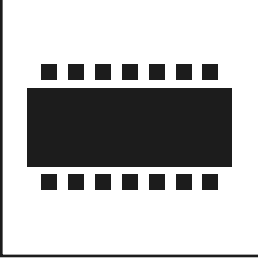
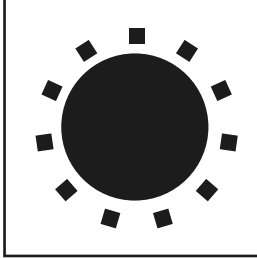
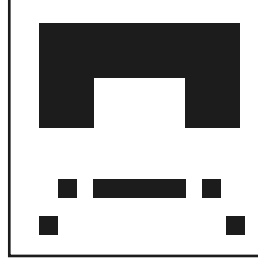
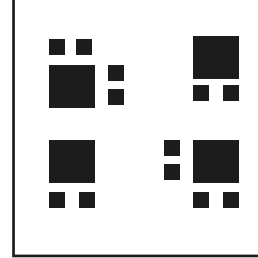
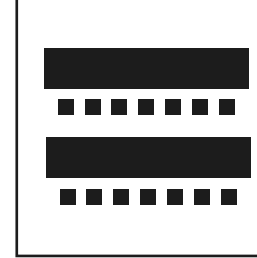
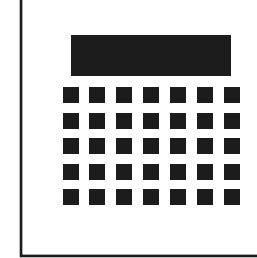
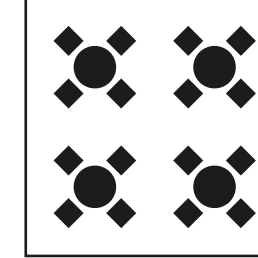
1. Bistro Bar

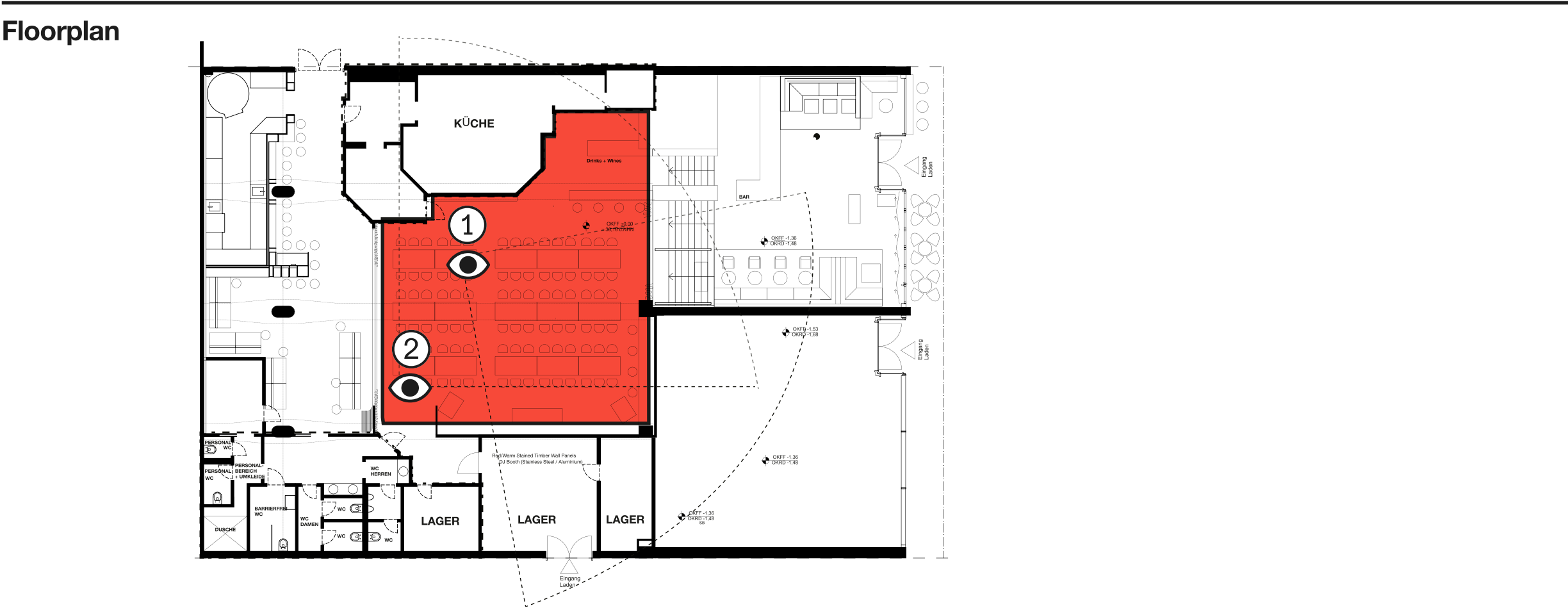


2. Bistro Seating

02. Red Room

Areas	Indoor: 181 m²	Lights	Erco System Custom led perimetral installation Table lights Standing / Floor lamps Oversized disco ball
Capacities (PAX)	Conference: 120 Get together/ Party: 400 Dinner: 90	Sound	Funktion one - dance stack Funktion one - Dj monitoring + Standard Dj equipment can be provided
Equipment	Fully equipped professional kitchen Features: various seating options, fixed bar areas, dining/ conference tables and chairs, modular wallsand shelving for adjustable spatial arrangement	Events (private)	Parties: 400 PAX Dinners: 118 PAX
Services	Catering Service Production Booking Concept & event design	Events (corporate)	Brand Activation Workshops & conferences Film & photoshoots Dinners & receptions Aftershow events

Layouts							
	LONG TABLES	ROUND TABLES	CLUB SETTING	CORPORATE HIGH TABLES	BAR TABLES	STAGE AND SEATING	BISTRO SEATING
	120	TBC	400 PAX	400 PAX	TBC	TBC	TBC



1. Red Room: Digital Render/Visualisation

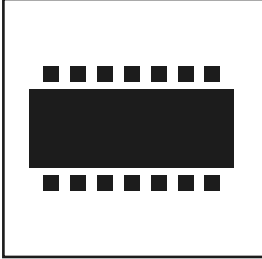


2. Red Room: Digital Render/Visualisation

03. Blue Room

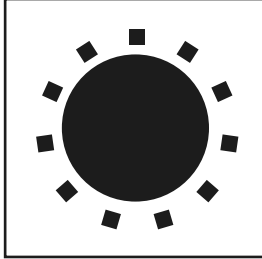
Areas	Indoor: 106 m²	Services	Catering service Production Booking Concept & event design
Capacities (PAX)	Get Together/Party: 70 Seated: 40	Equipment	Fully equipped professional kitchen Various seating options (modular seating), bar stools, fixed bar areas, openable accordion doors to street, dining/conference tables and chairs, modular walls for adjustable spatial arrangement
Events (private)	Parties: 400 PAX Dinners: TBC	Lights	Erco System Table Lights Standing / Floor lamps
Events (corporate)	Brand Activation Workshops & conferences Film & photoshoots Dinners & receptions Aftershow events		

Layouts



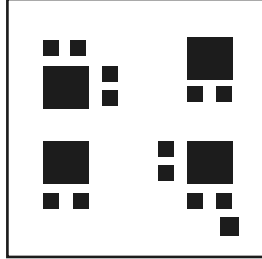
LONG TABLES

120



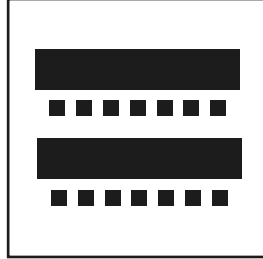
ROUND TABLES

TBC



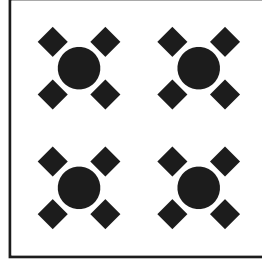
CORPORATE HIGH TABLES

400 PAX



BAR TABLES

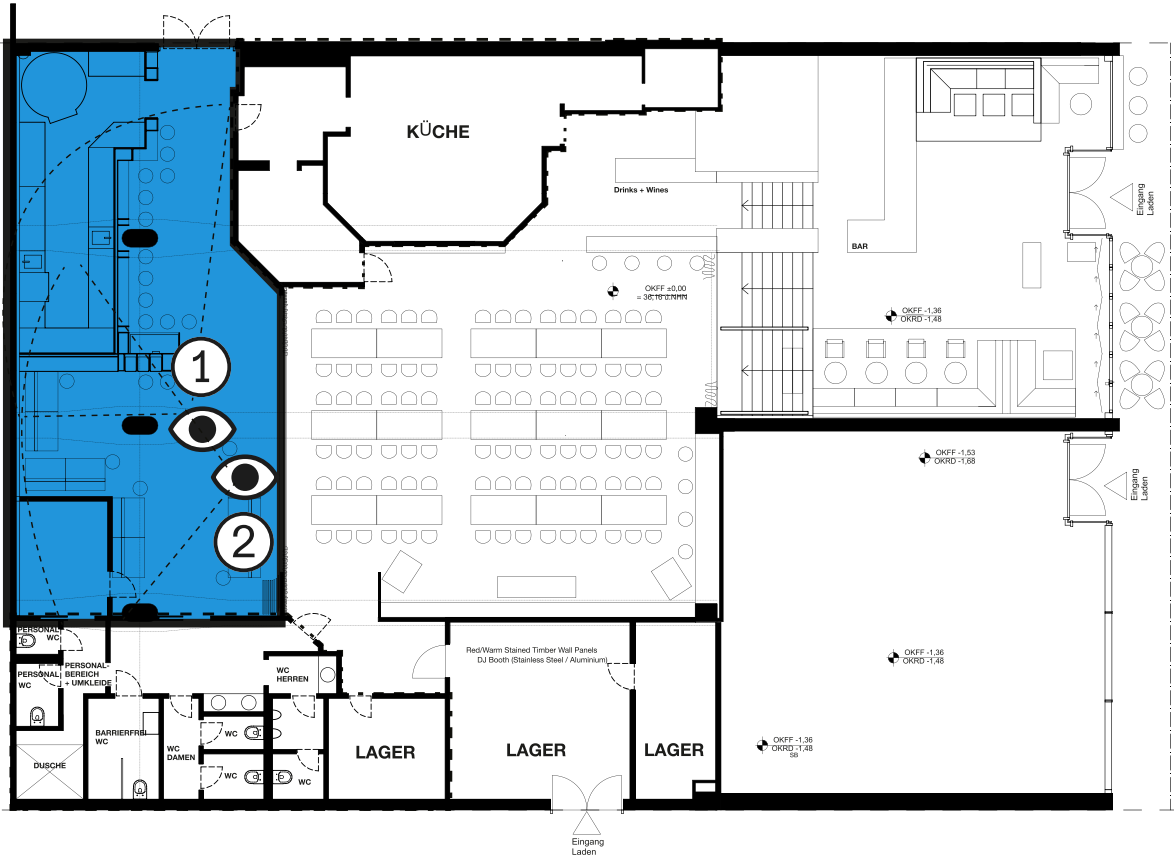
TBC



BISTRO SEATING

TBC

Floorplan



1. Blue Room Bar



2. Blue Room Bistro



cocoboule

Thank You

contact

www.bechstein-network.com
info@bechstein-network.com
[inquiries +49 156 786 621 00](tel:+4915678662100)