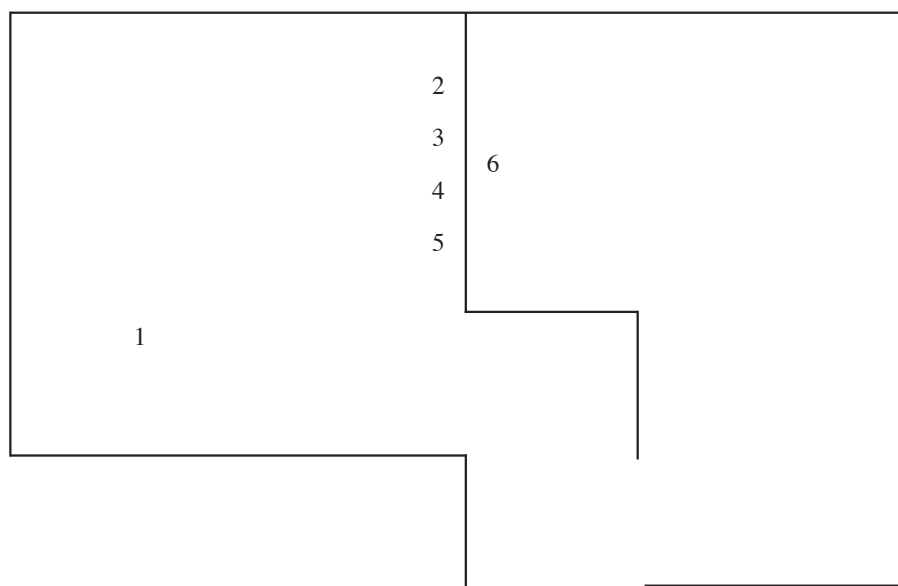


Aléa

McIntyre Parker

04.07. – 02.08.2025



1. 2025
Two Hans Wegner CH24 chair reproductions
Wood, paper cord
Dimensions vary
2. 2025
Digital c-print
25.4 × 20.3 cm
3. 2025
Digital c-print
25.4 × 20.3 cm
4. 2025
Digital c-print
25.4 × 20.3 cm
5. 2025
Digital c-print
25.4 × 20.3 cm
6. 2021
16mm digital transfer, video, sound
8 minutes

McIntyre Parker (b. 1984, Long Beach) lives in Bolinas, California. Solo exhibitions include Cushion Works, San Francisco (2024); Altman Siegel, San Francisco (2022); Kunstverein München (2021); Yale Union, Portland, Oregon (2018); and Odium Fati, San Francisco (2017). He co-organized the group exhibition “Cascadence,” with Grant Mooney (2021); and organized “O the sleeping bag contains the body but not the dreaming head,” (2013), both at Altman Siegel. In 2009 he founded Pied-à-terre, an occasional off-space.

Aléa is an exhibition program initiated by Pierre Allain and Antoine Dochniak in 2025 at Artagon Pantin, a former school repurposed into artist studios. Conceived in dialogue with the building’s history and the atmospheric conditions that may affect it, the program explores a sensitive reflection on the affective and emotional relationships between the artworks and their environment. Over the course of the year, international artists are invited to develop site-responsive proposals across varied timeframes. Each project will unfold in different parts of the building: a rooftop terrace, a meeting room, a screening room, and the corridors.