

Bahay Contemporary

Naiwen Chou + Yoo Ra Hong

Another Paradise

Atelier Peter Nitz

Spiegelgasse 13, 8001 Zurich

16 - 23 February 2024

Sat-Sun: 2 - 6 p.m.

Mon-Thu: 3 - 7 p.m.

Fri : 4 - 8 p.m.

Private tour, by appointment:

Tatiana +41 79 450 48 57

Steven +41 79 504 08 33

info@bahaycontemporary.com



Photo: Steven Anggrek/ Bahay Contemporary



Photo: Nic Hoesli

Bahay Contemporary is pleased to present works by Naiwen Chou and Yoo Ra Hong in Another Paradise. Both Asian female artists are currently completing their MA Fine Arts at Zürcher Hochschule der Künste (ZHdK) in Zurich.

Naiwen Chou (b.1994, Taipei, Taiwan) holds BA Fine Art from the Tama Art University in Tokyo and practices interdisciplinary art as well as using ceramic as medium for her sculpture and installation. Shaped by her own experience as a 'legal alien', Naiwen's artistic practice navigates around the idea of identity and its place in society.

Yoo Ra Hong (b.1992, Seoul, South Korea) graduated in Filmmaking and Art Theory at Korea National University of Arts and Fine Arts at Ecole Nationale Supérieure des Beaux-Arts de Lyon. She works on the border between cinema and contemporary art, using observation and archives as inspiration. Her artistic practice spans over various mediums, with painting and drawing allowing her to expand her narrative experimentation.

Bahay Contemporary

Naiwen Chou + Yoo Ra Hong

Another Paradise

Atelier Peter Nitz

Spiegelgasse 13, 8001 Zurich

Another Paradise, set in Atelier Peter Nitz - where Peter has been creating bespoke leather goods since fifteen years, shows not only a selection of intricate yet fun and playful sculptures but also paintings and drawings that display harmony within the spatial constraints.

Two recent works by Naiwen, freshly out of the kiln, are shown together with her other sculptures from The Evergreen Bonsai series. A playful exploration of alien identity reflected in floral beings of a fictional world. Taking her inspirations from and understanding the philosophy of cultivating the Japanese art of bonsai, Naiwen creates sculptural elements that can be manipulated into a beautiful bonsai. These ceramic sculptures comprise three separate and exchangeable components: the leaves, trunk, and pot.

“The idea of cultivating a small tree to mimic the beauty and complexity of a full-sized tree is truly inspiring.”

Naiwen Chou

Yoo Ra draws her inspiration from personal spatial and relational experiences as well as metaphoric references. In her series Ripen until Afterlife, the relationship between fig wasps and figs reflects micro living spaces, where one can find the presence of harmony and continual transformation (even) inside a tight space and beyond the constraints of mortal existence. Drifting bodies are also presented the scenery, in a figurative yet abstract way, referring to moments when the wasp is confined in the fig, the individual in its residence.

Another work on display, Commitment to a Ghost, is the fruit of a collaboration between the existing work of a late artist and Yoo Ra's reflections on the perpetual nature of art and its limits. This translates into the creation of a fictional realm inhabited by the Ghost, a dialogue between physical and metaphysical presence, between what one can see and what lies forever hidden beneath. Two recent drawings by Yoo Ra accompany this work, portraying imaginary beings with botanical features that are part of this realm.

“Growing up in the city, I have always longed for nature. I express this desire, perhaps illusory, as a process of transforming bodies of alienated individuals into botanical forms.”

Yoo Ra Hong

Both Naiwen and Yoo Ra carefully show the connection between constraint and beauty, reminding us that the harmony we cultivate within ourselves and our surrounding creates another paradise.

Bahay Contemporary

Naiwen Chou + Yoo Ra Hong

Another Paradise

Atelier Peter Nitz

Spiegelgasse 13, 8001 Zurich



Naiwen Chou, Evergreen #10, 2024
High-fired glazed ceramic
43 x 26 x 15 cm
CHF 1450



Naiwen Chou, Evergreen #11, 2024
High-fired glazed ceramic
23 x 30 x 17 cm
CHF 1450



Naiwen Chou, Evergreen #01, 2023-2024
High-fired glazed ceramic
37 x 18 x 17 cm
CHF 1450



Naiwen Chou, Evergreen #02, 2023
High-fired glazed ceramic
37 x 18 x 17 cm
CHF 1450



Naiwen Chou, Evergreen #03, 2023
High-fired glazed ceramic
35 x 33 x 17 cm
CHF 1450

Bahay Contemporary

Naiwen Chou + Yoo Ra Hong

Another Paradise

Atelier Peter Nitz

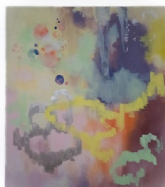
Spiegelgasse 13, 8001 Zurich



Yoo Ra Hong, Ripen until Afterlife, 2023
Oil, oil pastel on canvas
140 x 160 cm
CHF 3500



Yoo Ra Hong, 1004, 2024
Oil on canvas
24 x 24 cm
CHF 700



Yoo Ra Hong, Ripen until Afterlife #2, 2023
Oil, oil pastel on canvas
160 x 140 cm
CHF 3500



Yoo Ra Hong, 1004 #2, 2024
Oil, oil pastel on canvas
24 x 24 cm
CHF 700



Yoo Ra Hong, Ripen until Afterlife #3, 2023
Oil, oil pastel on canvas
160 x 140cm
CHF 3500



Yoo Ra Hong, z, 2023
Oil pastel on paper, framed
40 x 30 cm
CHF 650



Yoo Ra Hong and Charlotte Schmid,
Commitment to a Ghost, 1986/2023
100 x 100 cm
Oil, oil pastel on canvas
CHF 2600



Yoo Ra Hong, z #2, 2023
Oil pastel on paper, framed
42 x 29.7 cm
CHF 650