

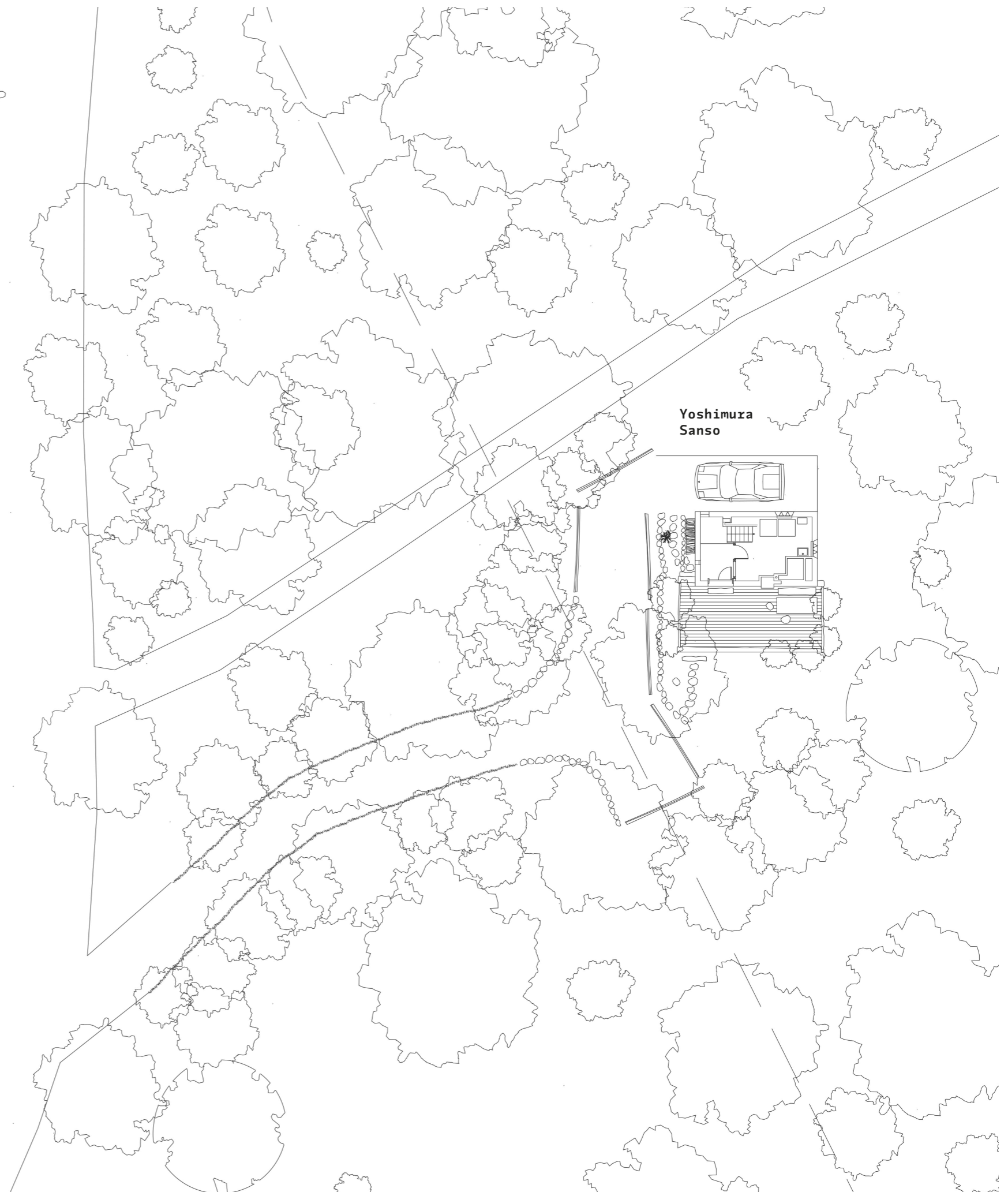
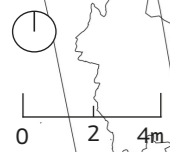
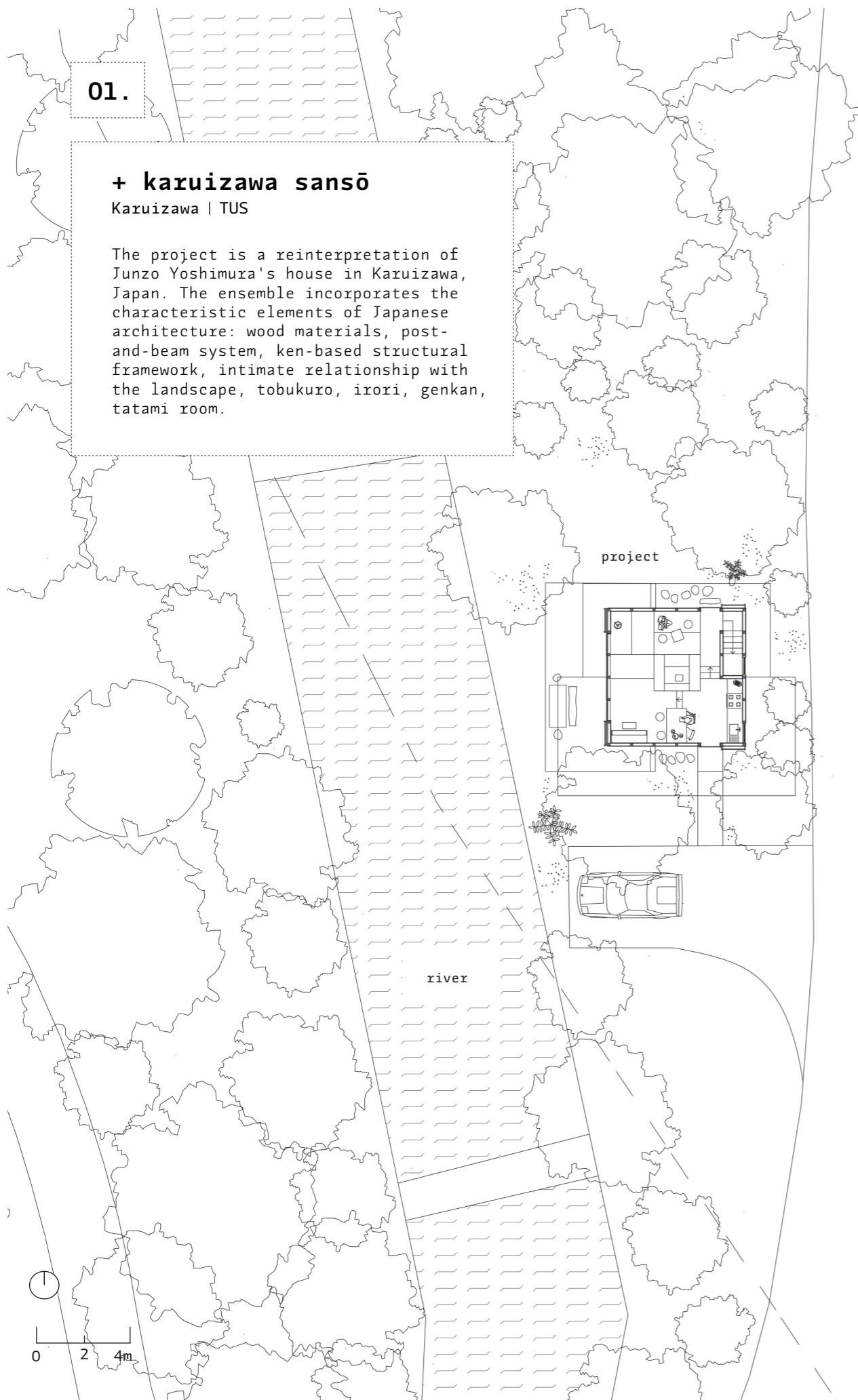
+ Lili Gracia
portfolio 2016-2024

01.

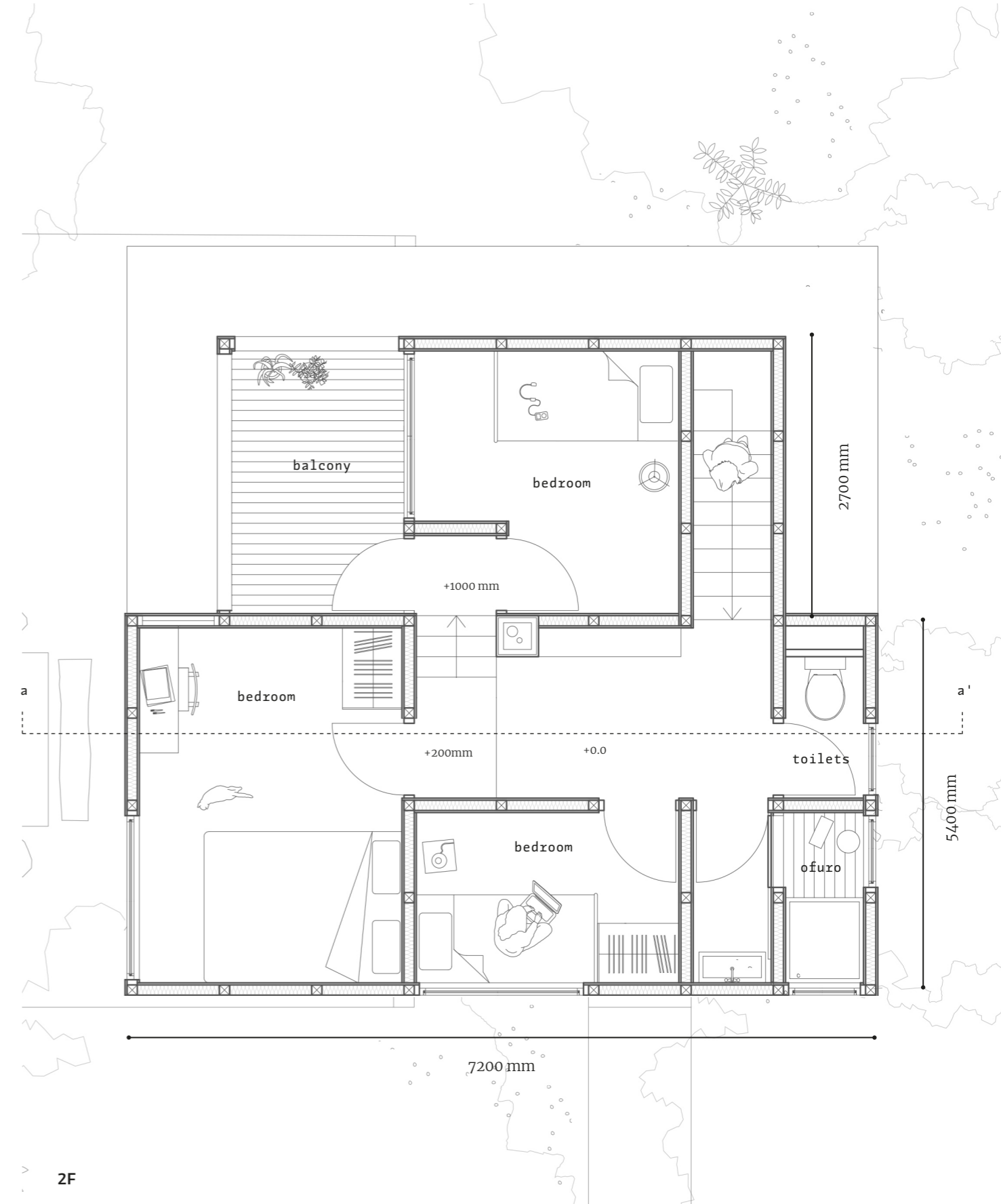
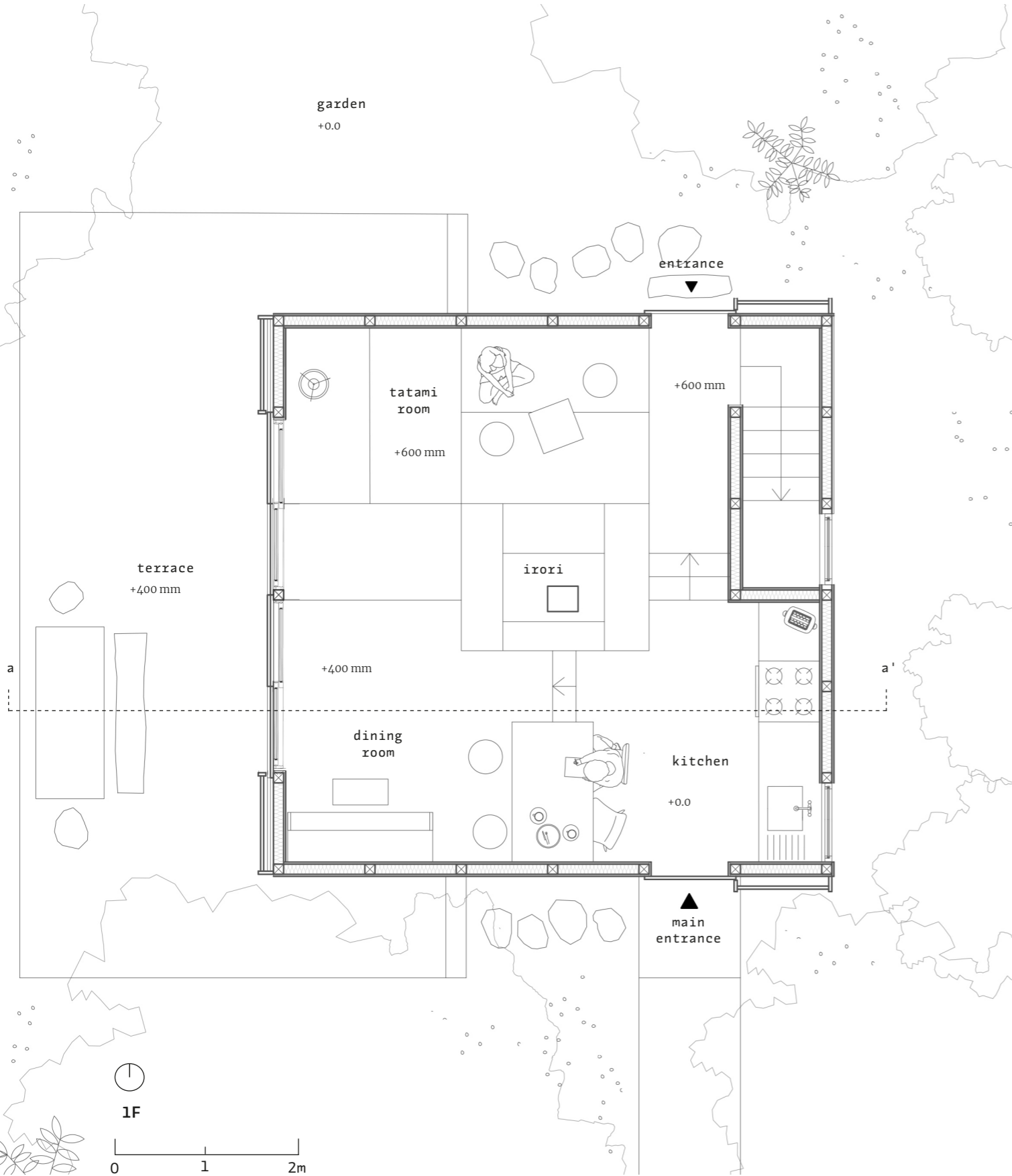
+ karuizawa sansō

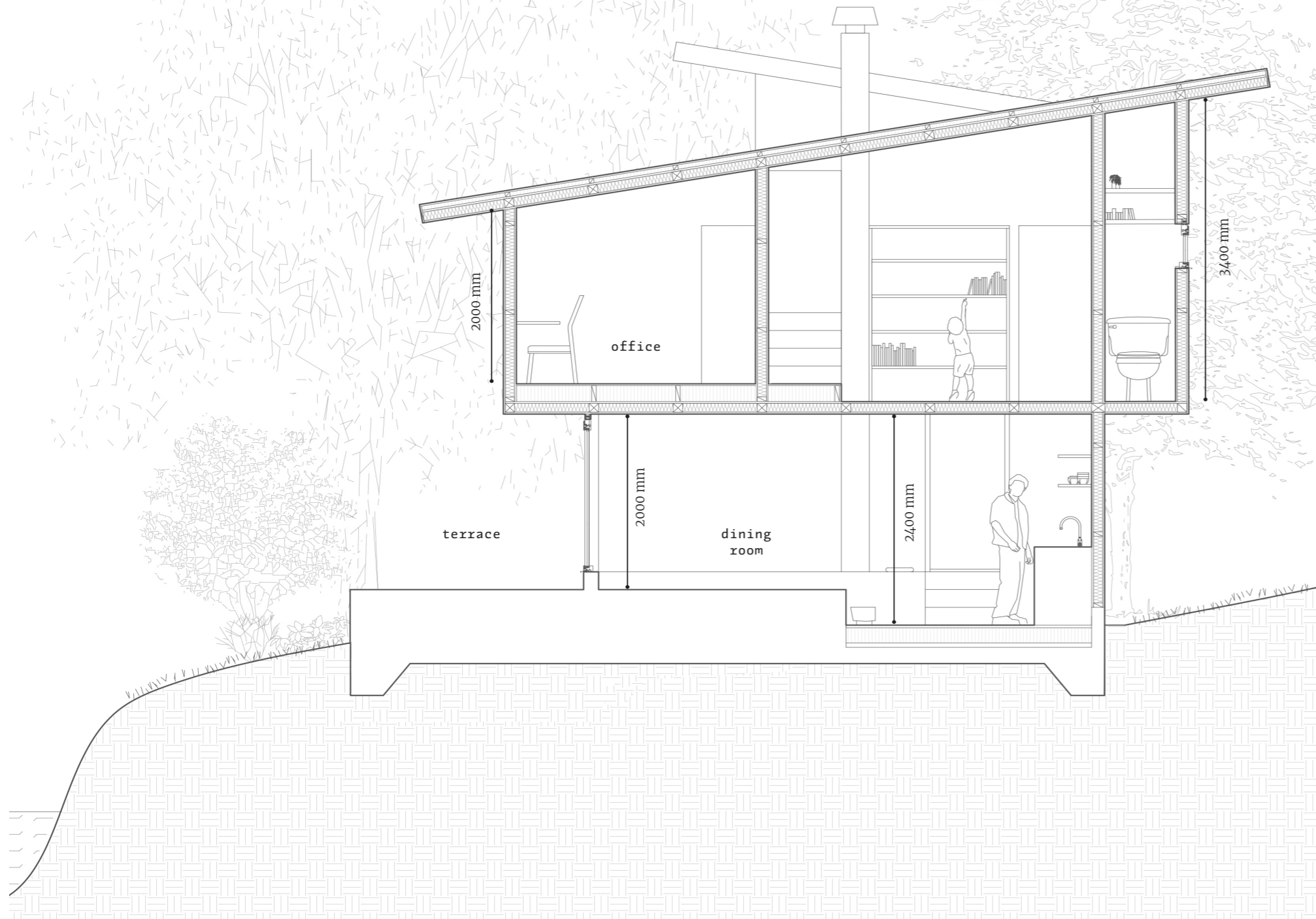
Karuizawa | TUS

The project is a reinterpretation of Junzo Yoshimura's house in Karuizawa, Japan. The ensemble incorporates the characteristic elements of Japanese architecture: wood materials, post-and-beam system, ken-based structural framework, intimate relationship with the landscape, tobukuro, irori, genkan, tatami room.

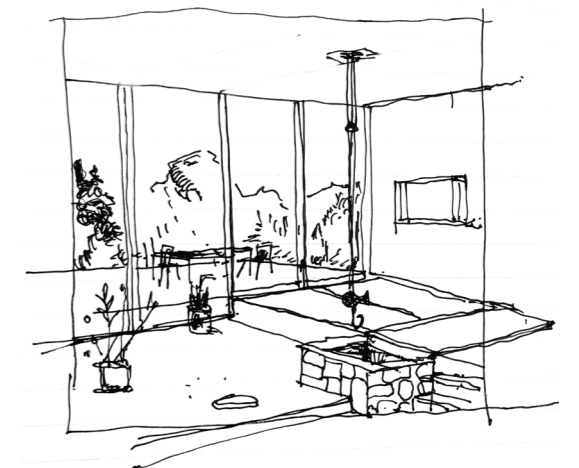
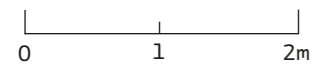


+ karuizawa sansō
 MA in Architecture | TUS | Karuizawa





section aa'

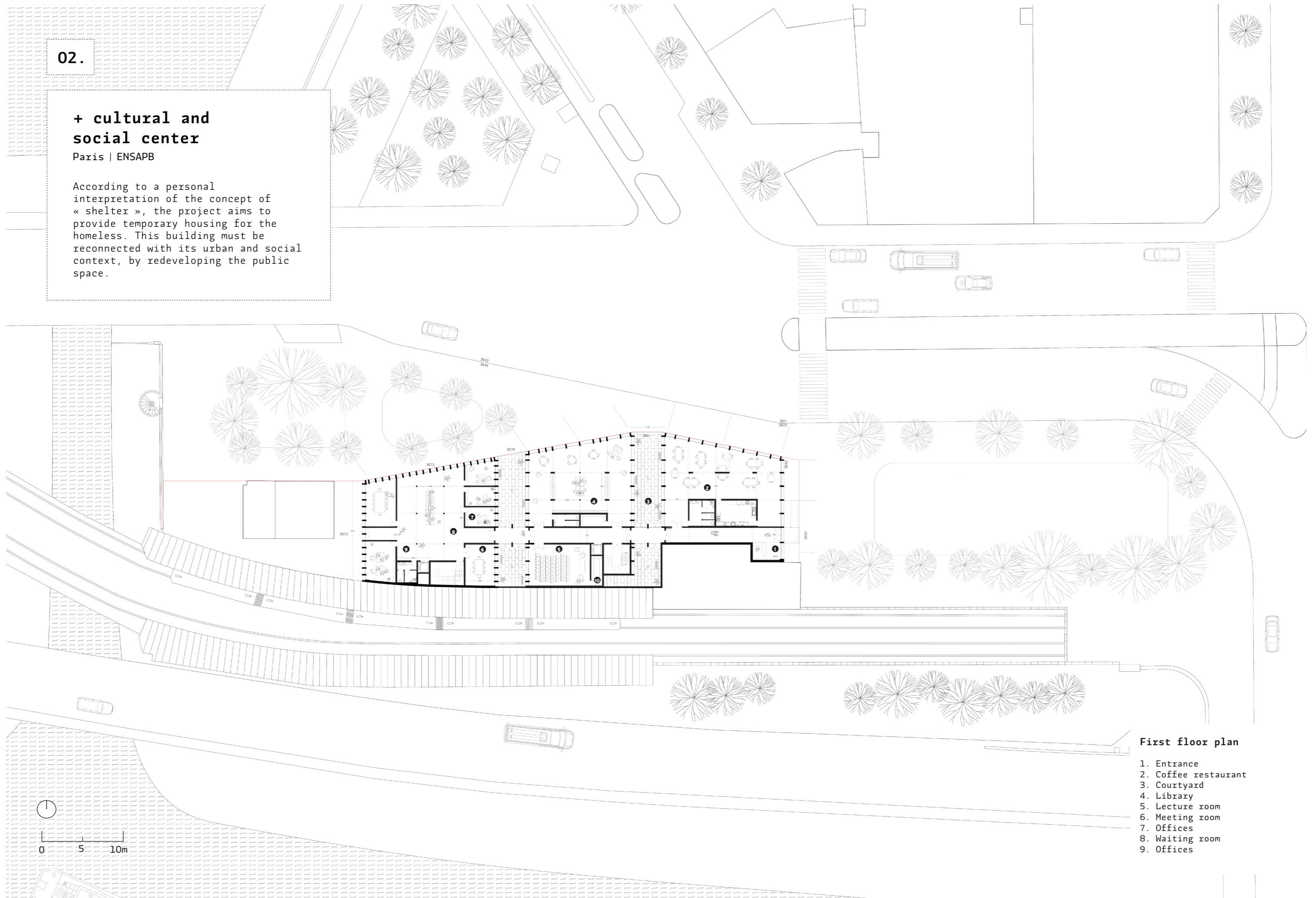


02.

+ cultural and social center

Paris | ENSAPB

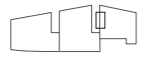
According to a personal interpretation of the concept of « shelter », the project aims to provide temporary housing for the homeless. This building must be reconnected with its urban and social context, by redeveloping the public space.



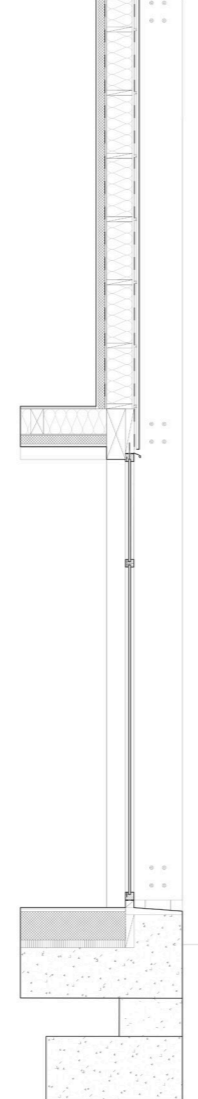
First floor plan

- 1. Entrance
- 2. Coffee restaurant
- 3. Courtyard
- 4. Library
- 5. Lecture room
- 6. Meeting room
- 7. Offices
- 8. Waiting room
- 9. Offices

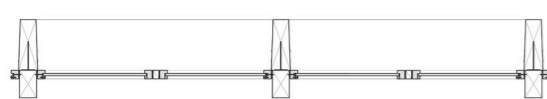
Détail façade intérieure
 1/20e



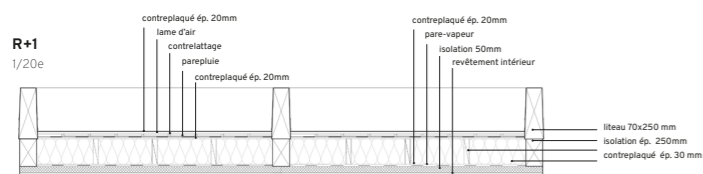
- couverture zinc
- panneau fibre de bois ép. 20 mm
- volige 30x30 mm
- panneau ép. 20 mm
- goutlière
- lisseau 70x250 mm
- isolation ép. 250mm
- contreplaqué ép. 30 mm



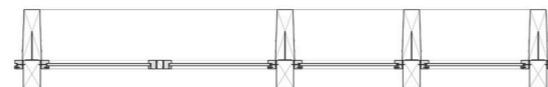
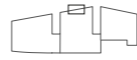
RDC
 1/20e



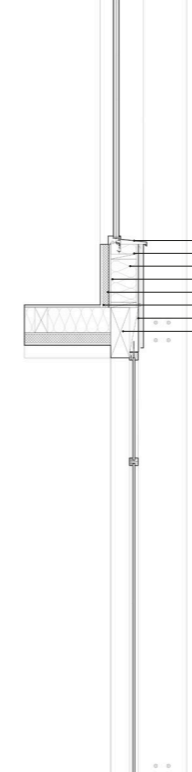
R+1
 1/20e



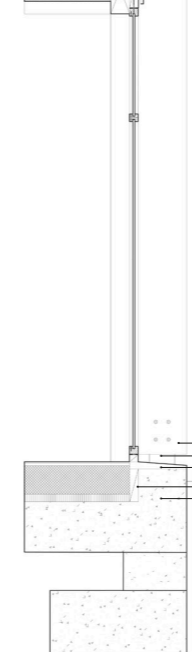
Détail seconde façade
 1/20e



- poteau 450x150mm
- contreplaqué ép. 20mm
- lame d'air
- contrelattage
- pare-pluie
- store vénitien

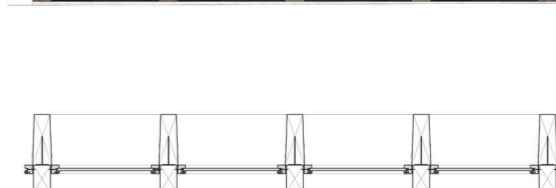
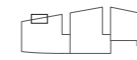


- appui de fenêtre zinc
- traverse basse 40x200mm
- isolation ép. 200mm
- contreplaqué ép. 20mm
- isolation 50mm
- pare-vapeur
- solive d'about 150x400 mm
- lisse de ceinturage



- poteau 150x450 mm
- piéd de poteau métallique
- couverfine zinc
- seuillante d'assise 70x250mm
- béton

Détail troisième façade
 1/20e



03.

**+ craft workshop
and housing**

Musashi-Koyama | TUS

The craftworkshop takes place in Musashi-Koyama. The project questions the reuse of materials from the deconstruction of traditional houses in the neighborhood. The pieces of wood are used as material in the various workshops, from the small carpentry to the paper workshop.



+ craft workshop and housing
MA in Architecture | TUS | Musashi-Koyama





site model
1/100e



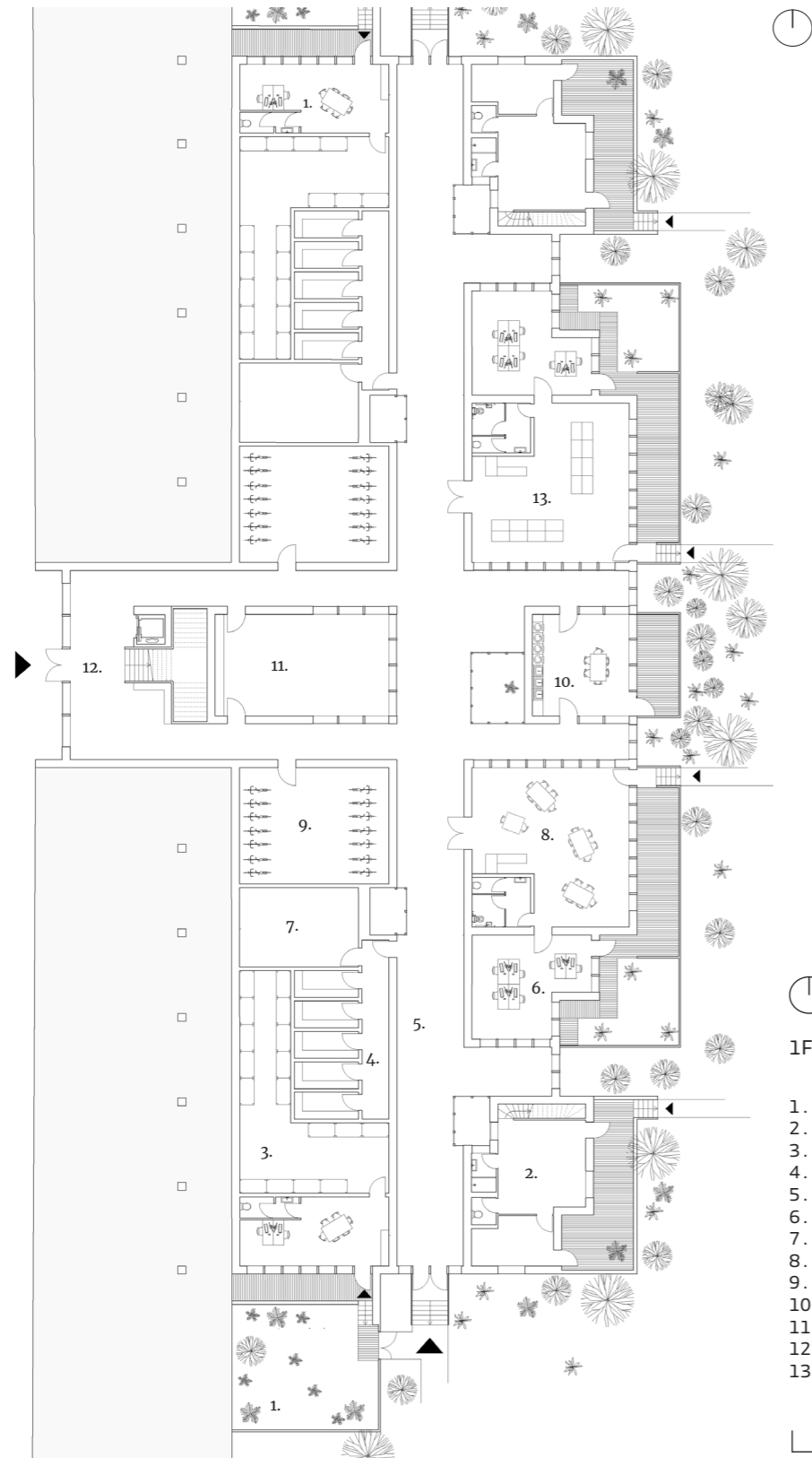
04.

+ hill

Sarcelles | ENSAPB

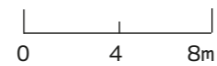
Each of the dwellings uses the hill as a point of attachment. The accommodation is organized around a public « central deck ». The different dwellings are spread over two levels and thus play with the height variation.





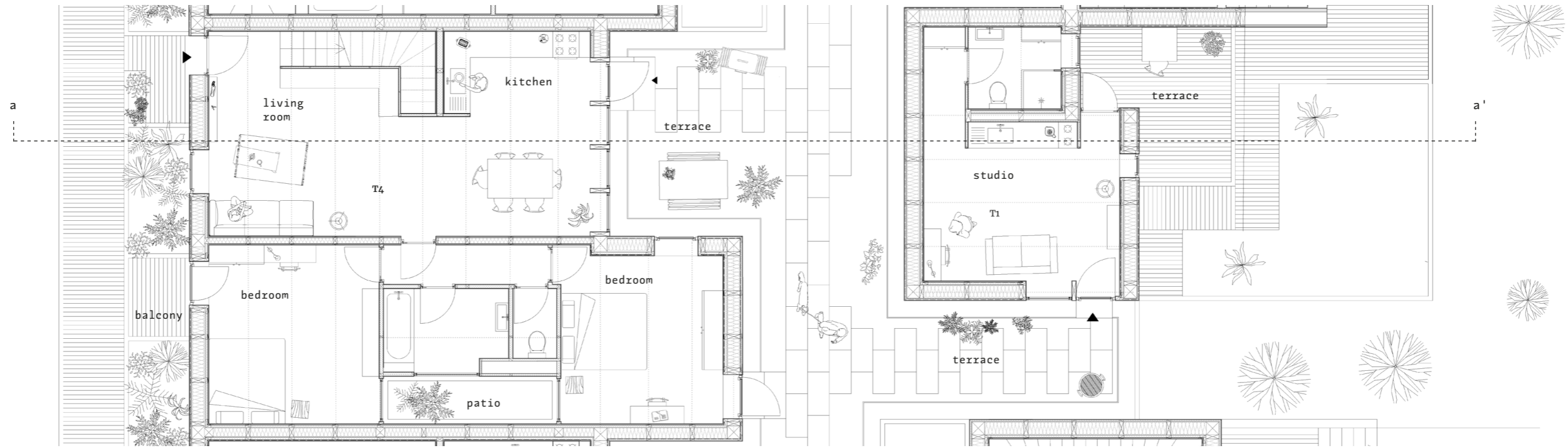
1F

- 1. Vegetable garden 55m²
- 2. T2 80m²
- 3. Vegetable garden 50m²
- 4. Cellar 30m²
- 5. Alley
- 6. Office 33m²
- 7. Technical space 30m²
- 8. Café 80m²
- 9. Bicycle parking 55m²
- 10. Laundry 30m²
- 11. Garbage space 55m²
- 12. Entrance
- 13. AMAP 80m²

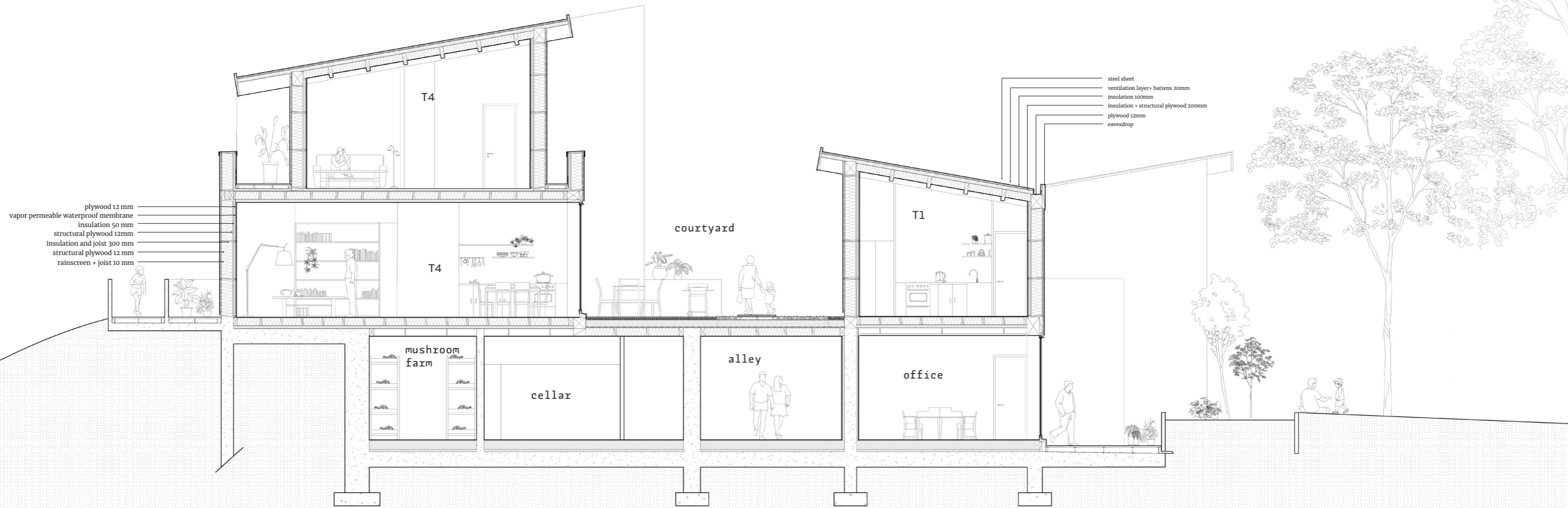


2F

- 1. Terrace 19m²
- 2. Flat T3 90m²
- 3. Flat T3 100m²
- 4. Flat T4 115m²
- 5. Flat T1 25m²
- 6. Flat T3 100m²
- 7. Flat T2 50m²
- 8. Terrace 30m²
- 9. Common space 55m²
- 10. Studio 30m²



R+1



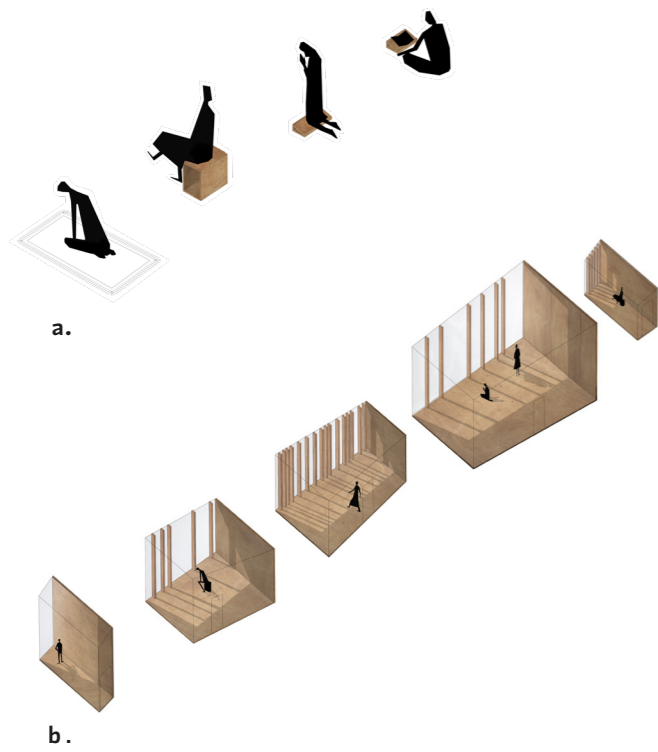
section aa'

05.

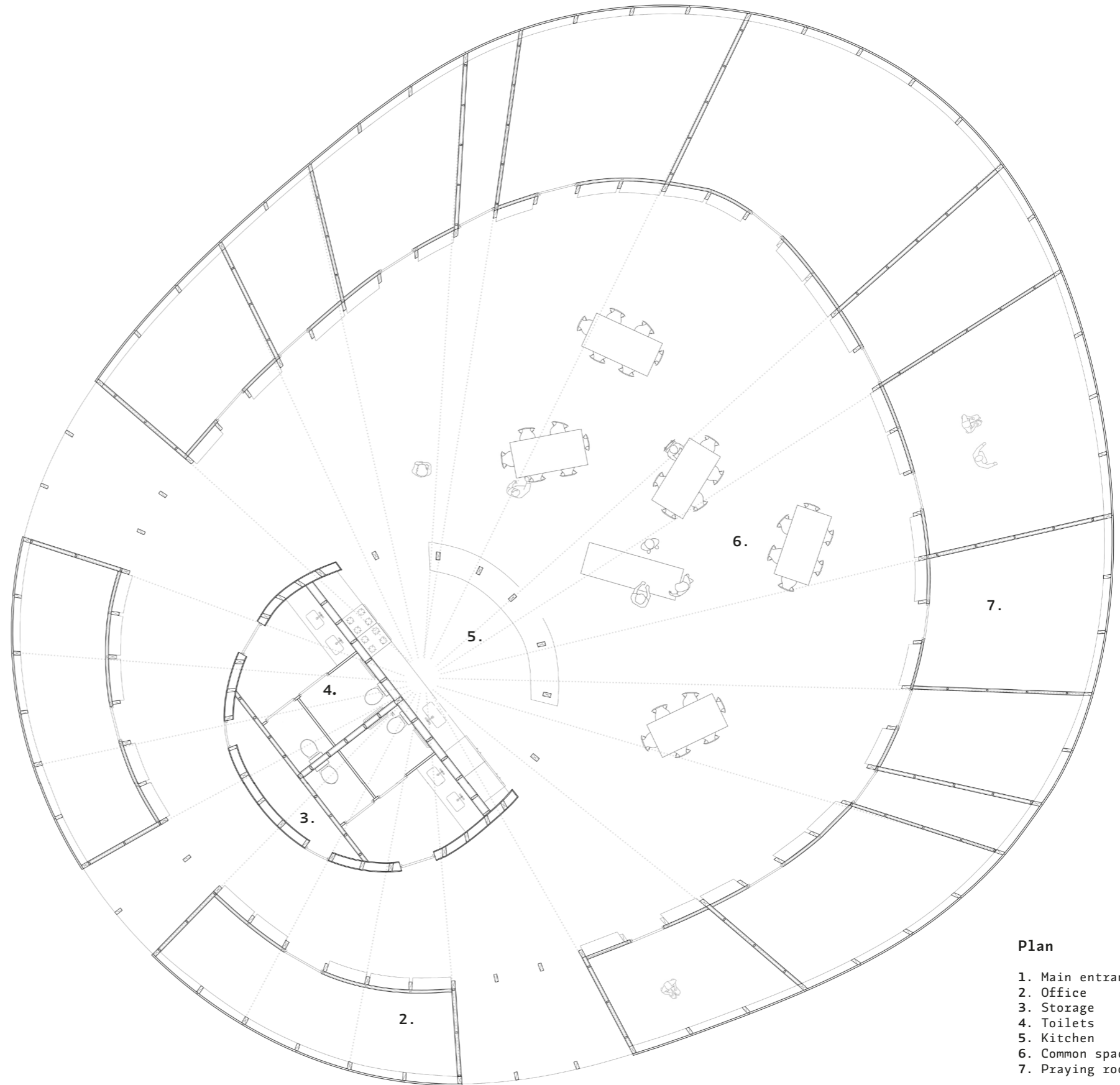
+ holy home !

Choisy-le-Roi | École Boullé

Due to the various inter-community tensions, it is necessary, today in France, to invent a new typology of place and space to encourage the meeting of all citizen identities. I imagine, in the north of Choisy-le-Roi, a place that mixes cultural and religious.



a. Body positions of praying
b. Praying spaces typology



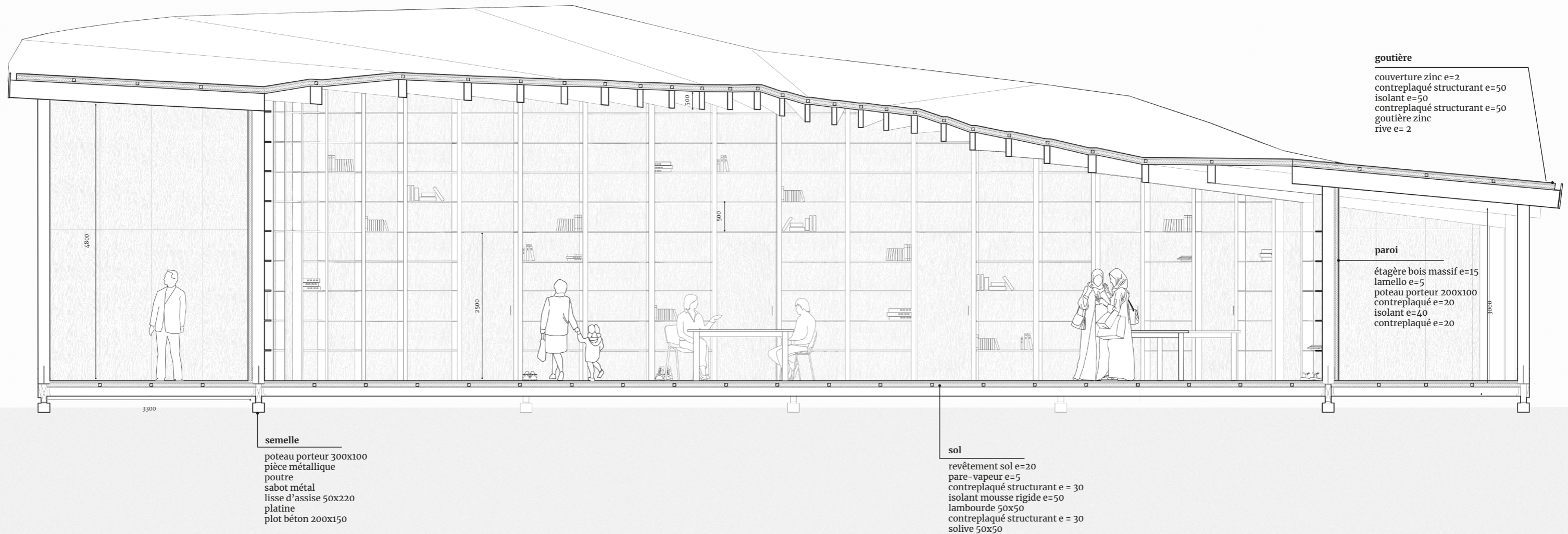
Plan
1. Main entrance
2. Office
3. Storage
4. Toilets
5. Kitchen
6. Common space
7. Praying room



+ holy home !

MA space design | École Boulle | Choisy-le-Roi

Built in wood and potentially itinerant, this reversible architecture is composed of a central space, focused on commensality and education. The wall of the central space houses holy books, furniture, objects for prayer, and illustrates the diversity of cults and cultures.



+ holy home !

MA space design | École Boulle | Choisy-le-Roi



entrance view



central space



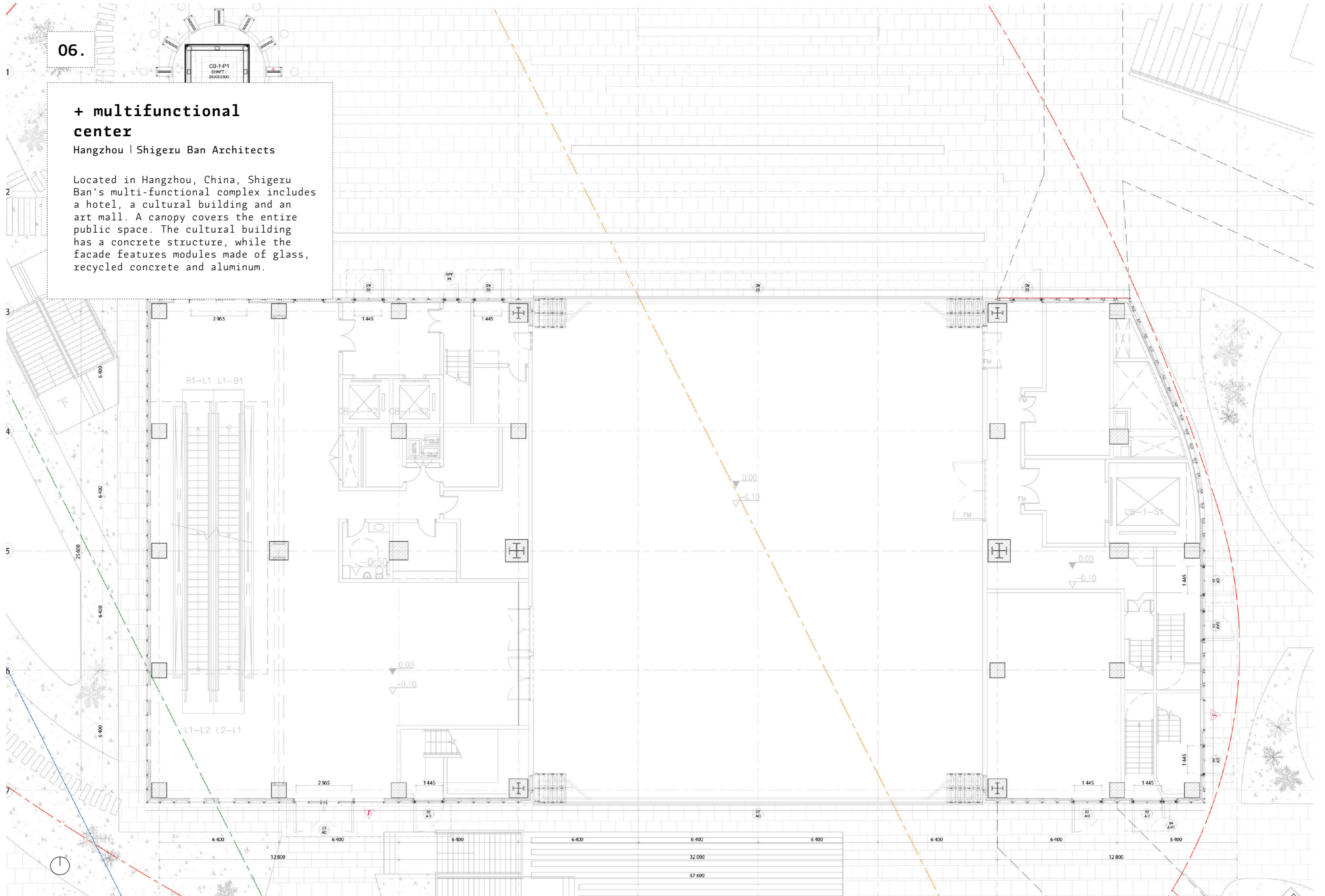
prayer room

06.

+ multifunctional center

Hangzhou | Shigeru Ban Architects

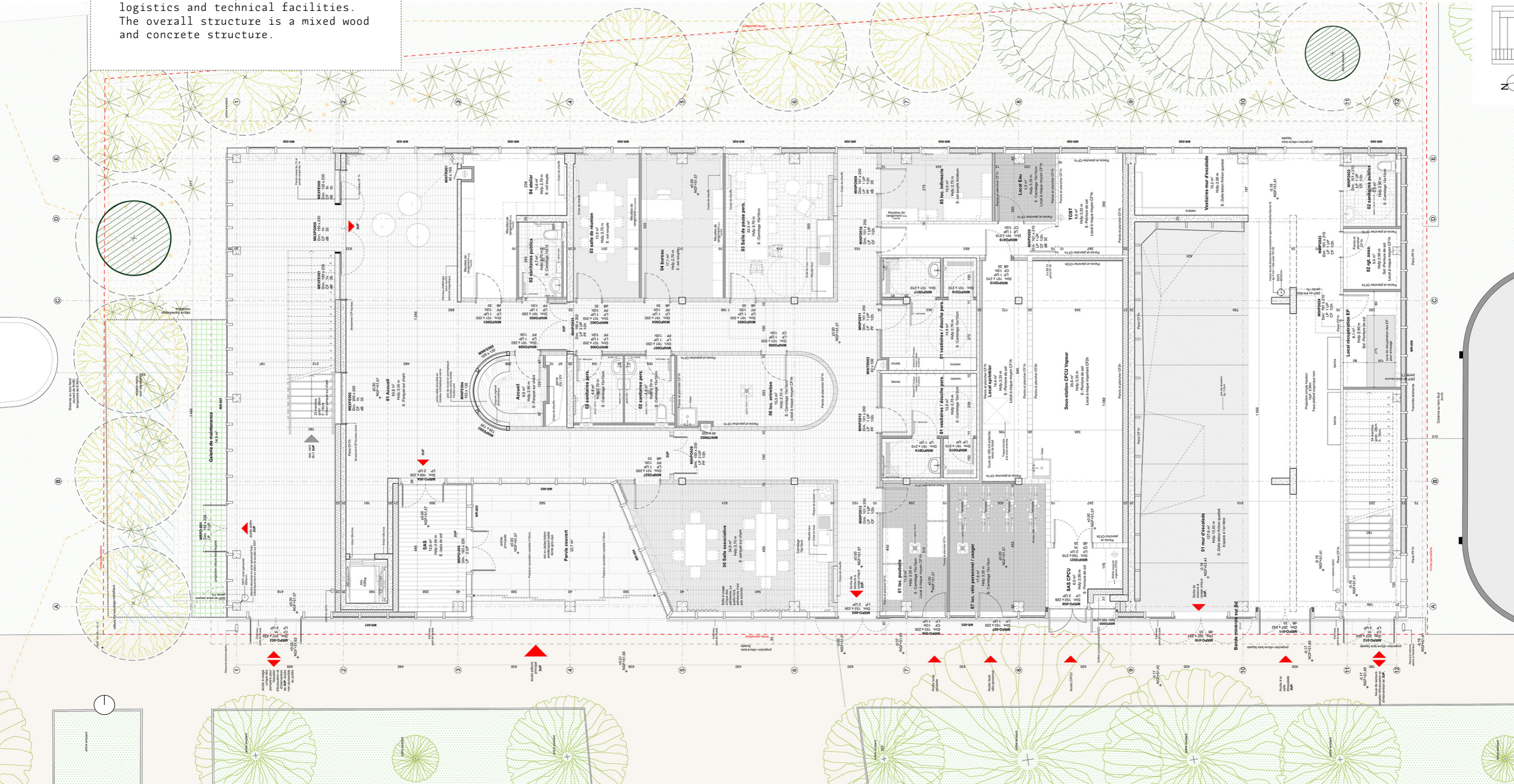
Located in Hangzhou, China, Shigeru Ban's multi-functional complex includes a hotel, a cultural building and an art mall. A canopy covers the entire public space. The cultural building has a concrete structure, while the facade features modules made of glass, recycled concrete and aluminum.

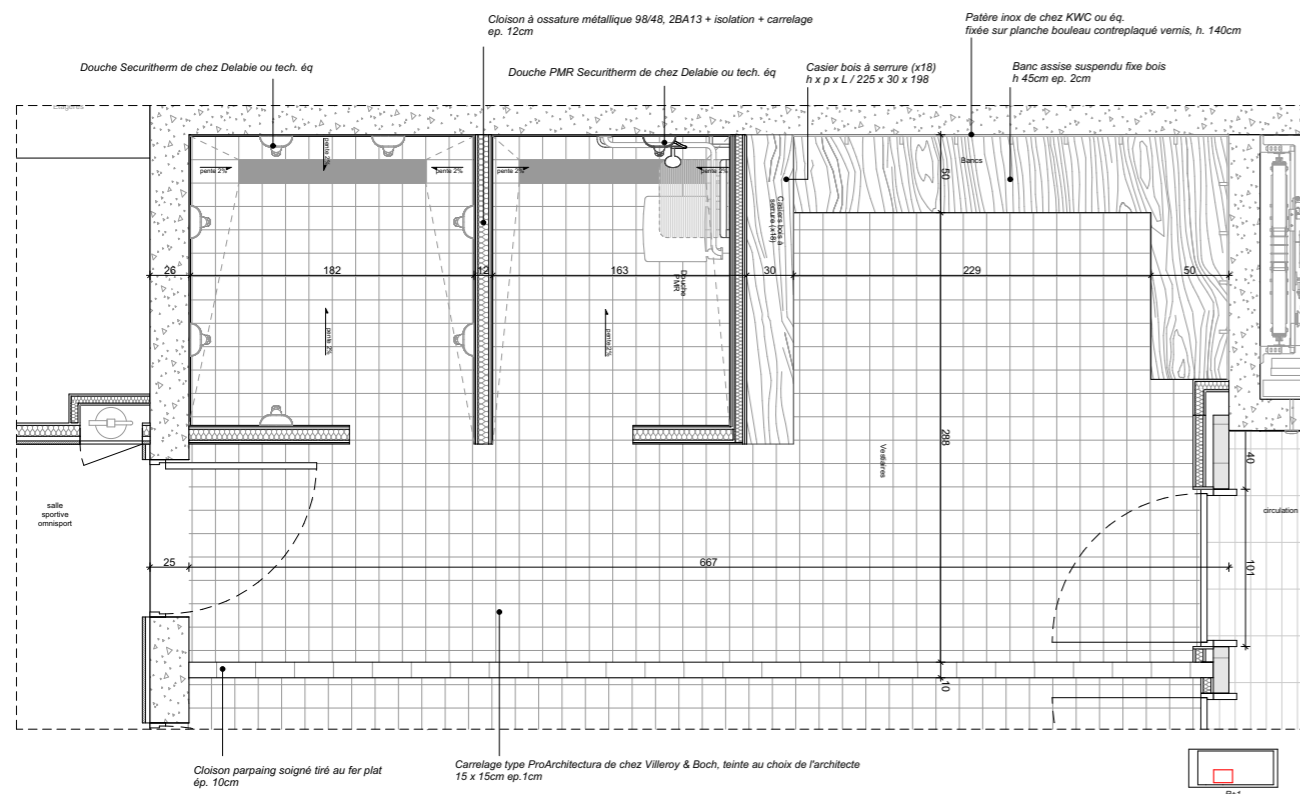
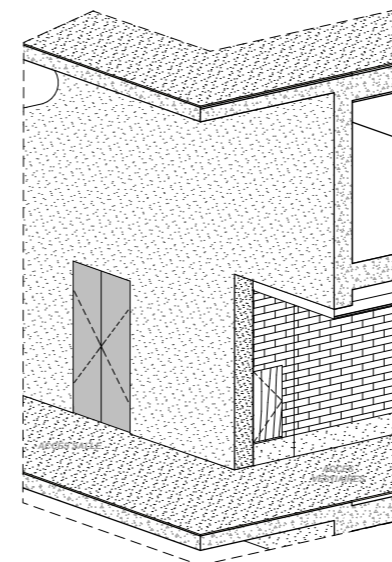
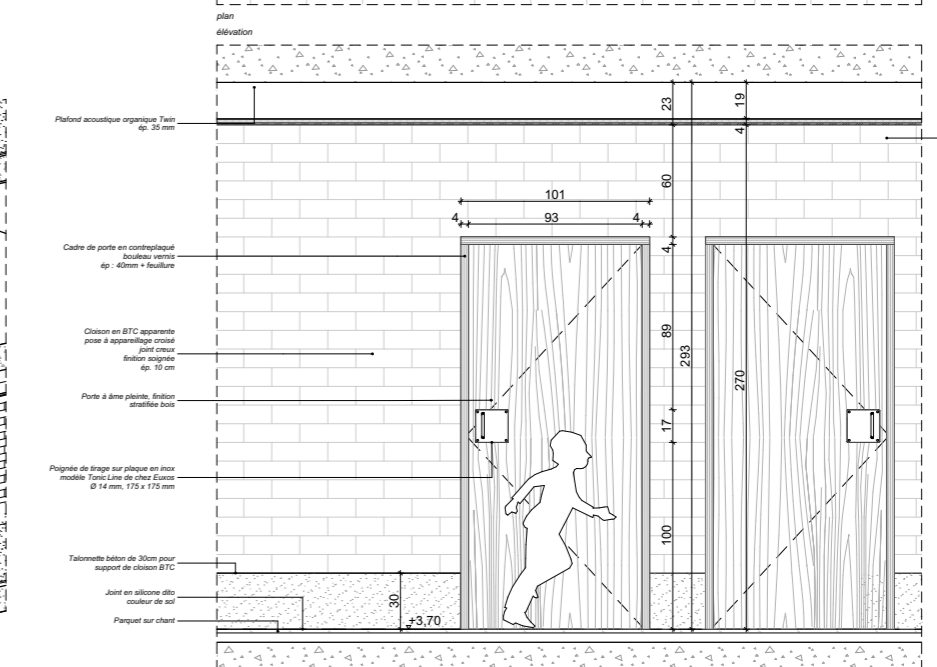
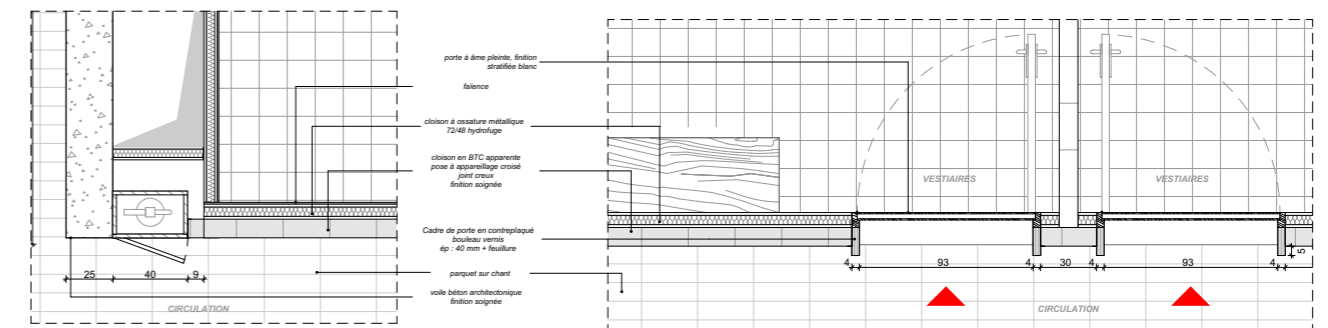
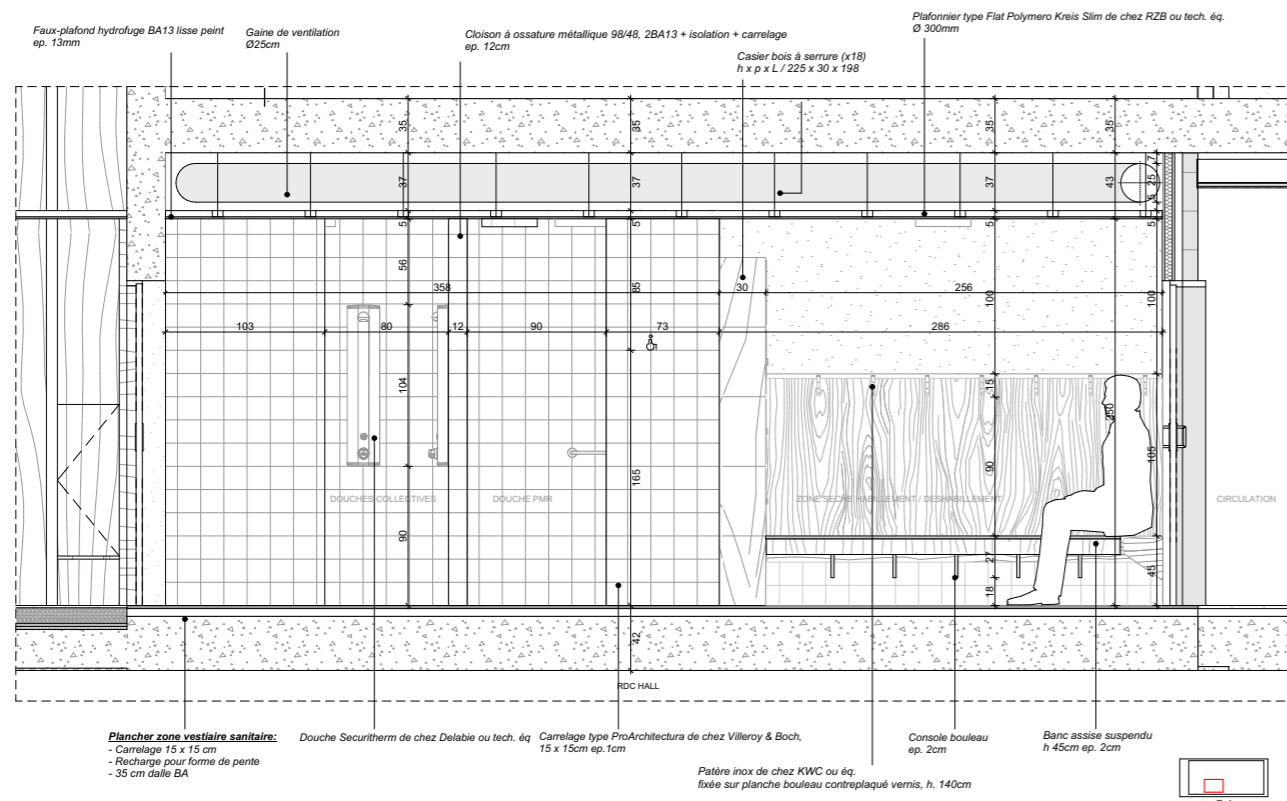


+ sport center

Paris | ateliers o-s architects

Located at Porte de Vincennes in Paris, this sports facility includes a full-height climbing wall, a dojo, a multi-purpose room and a boxing/fitness hall, as well as a reception area, staff, logistics and technical facilities. The overall structure is a mixed wood and concrete structure.





08.

**+ is it truly
necessary ?**

Shingo Matsuda + Katsuhisa Otsubo

Production of models for the office's
exhibition at Toto Gallery Ma in Tokyo
in January 2020.



© nacása & partners inc.



© nacása & partners inc.



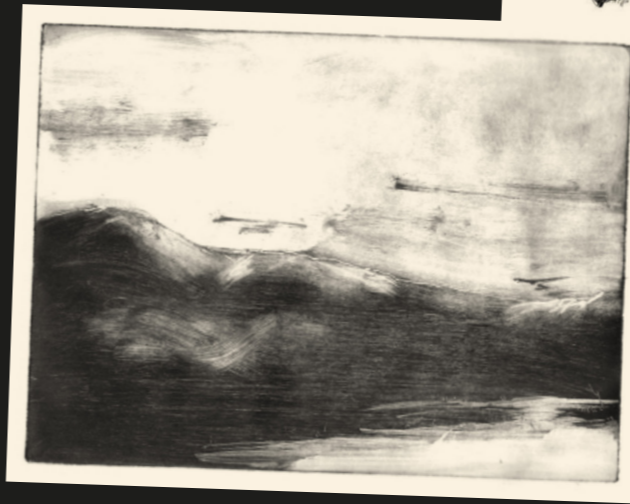
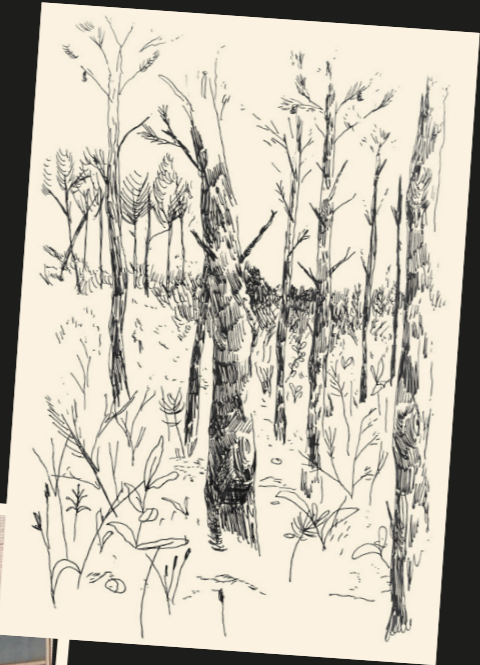
© nacása & partners inc.



© designboom

+ personal production

drawing | painting | sketching | photography



+ personal production

drawing | painting | etching | photography

